

8 7 6 5 4 3 2 1

D

D

C

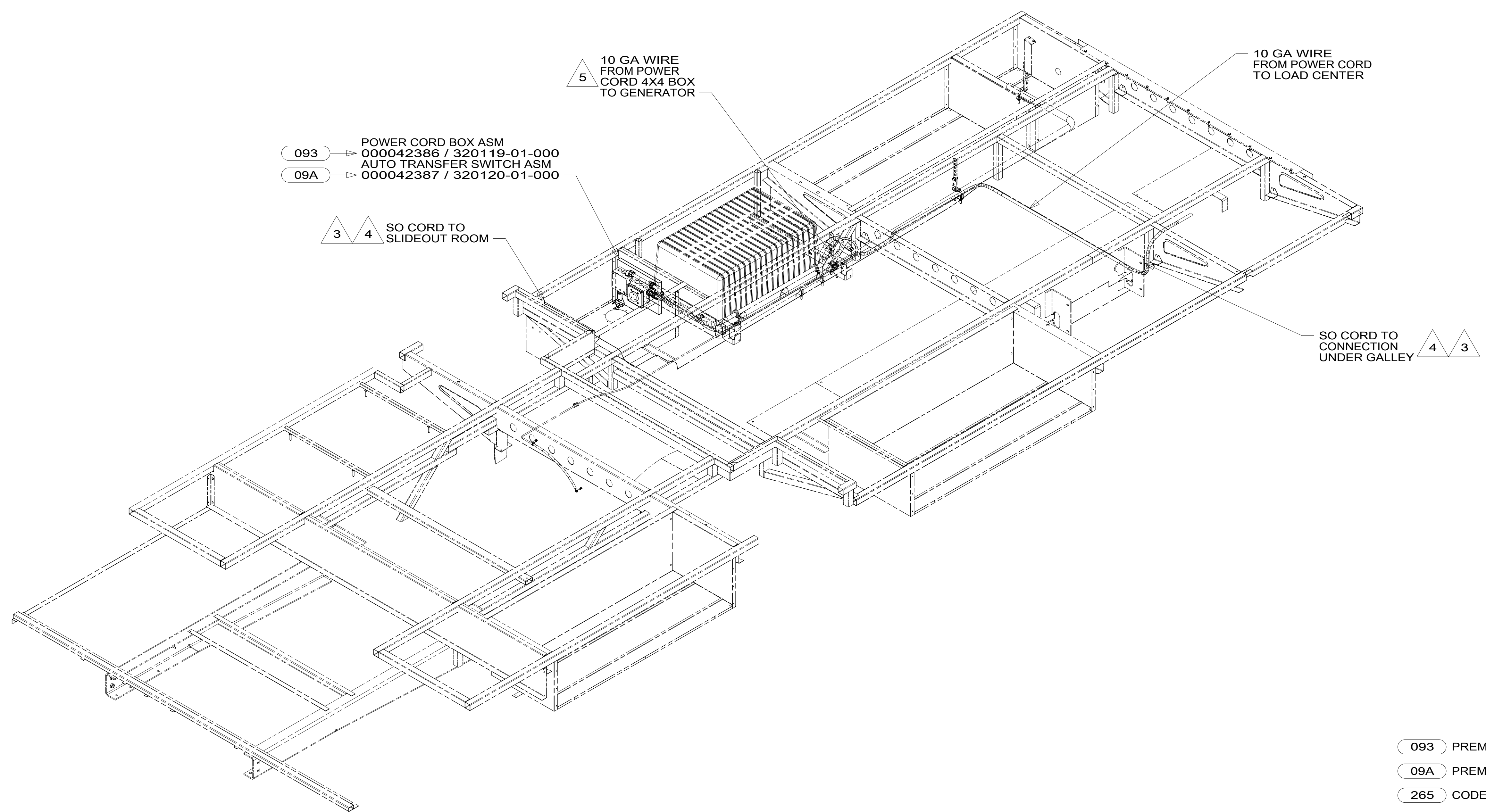
C

B

B

A

A



093 → POWER CORD BOX ASM
000042386 / 320119-01-000
09A → AUTO TRANSFER SWITCH ASM
000042387 / 320120-01-000

3 4 SO CORD TO
SLIDEOUT ROOM

5 10 GA WIRE
FROM POWER
CORD 4X4 BOX
TO GENERATOR

10 GA WIRE
FROM POWER CORD
TO LOAD CENTER

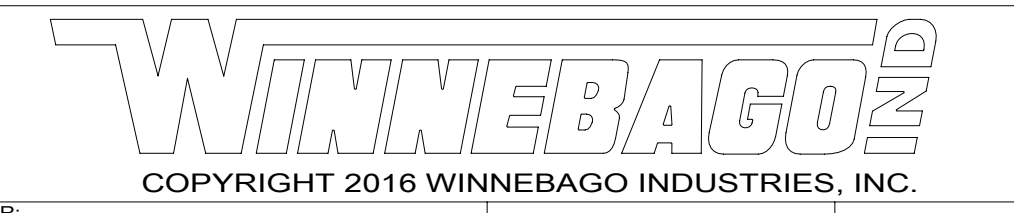
SO CORD TO
CONNECTION
UNDER GALLEY 4 3

- 5 SEE GENERATOR INSTL FOR ADDITIONAL INFORMATION.
- 4 CORD IS PART OF WIRE ASM-CHASSIS.
- 3 ROUTE WIRE THRU FLOOR.
2. ALL 110V WIRE TO BE CLAMPED WITH CLAMP 10497-05-000 WITHIN 200MM OF OUTLET BOXES, USE SCREW G67-10-12B.
1. AT MINIMUM ALL WIRES TO BE SUPPORTED AND SECURED PER CODE REQUIREMENTS. USE CLAMP 10495 OR 10497 OR WIRE TIE 8343 OR 108046 AND SCREW G67-XX-XXX OR G56-XX-XXX AS APPROPRIATE FOR INSTALLATION.

NOTES:

- 093 PREMIUM PACKAGE WITHOUT
- 09A PREMIUM PACKAGE
- 265 CODES/STANDARDS-CSA/CMVSS
- 1B1 CODES/STANDARDS USA

1B1 265



DSNR:		ALL DIMENSIONS ARE IN MILLIMETERS	
DFFR:		MATERIAL:	
UNSPECIFIED TOLERANCES:			
WHOLE DIM (X)	: 3		
ONE-PLACE (X.X)	: 1.5		
TWO-PLACE (X.XX)	: 0.50		
ANGLE	: 1°		
REFER TO ES0018 FOR FASTENER TIGHTENING GUIDELINES		WEIGHT: (LBS)	FIRST USED:
			18 331K

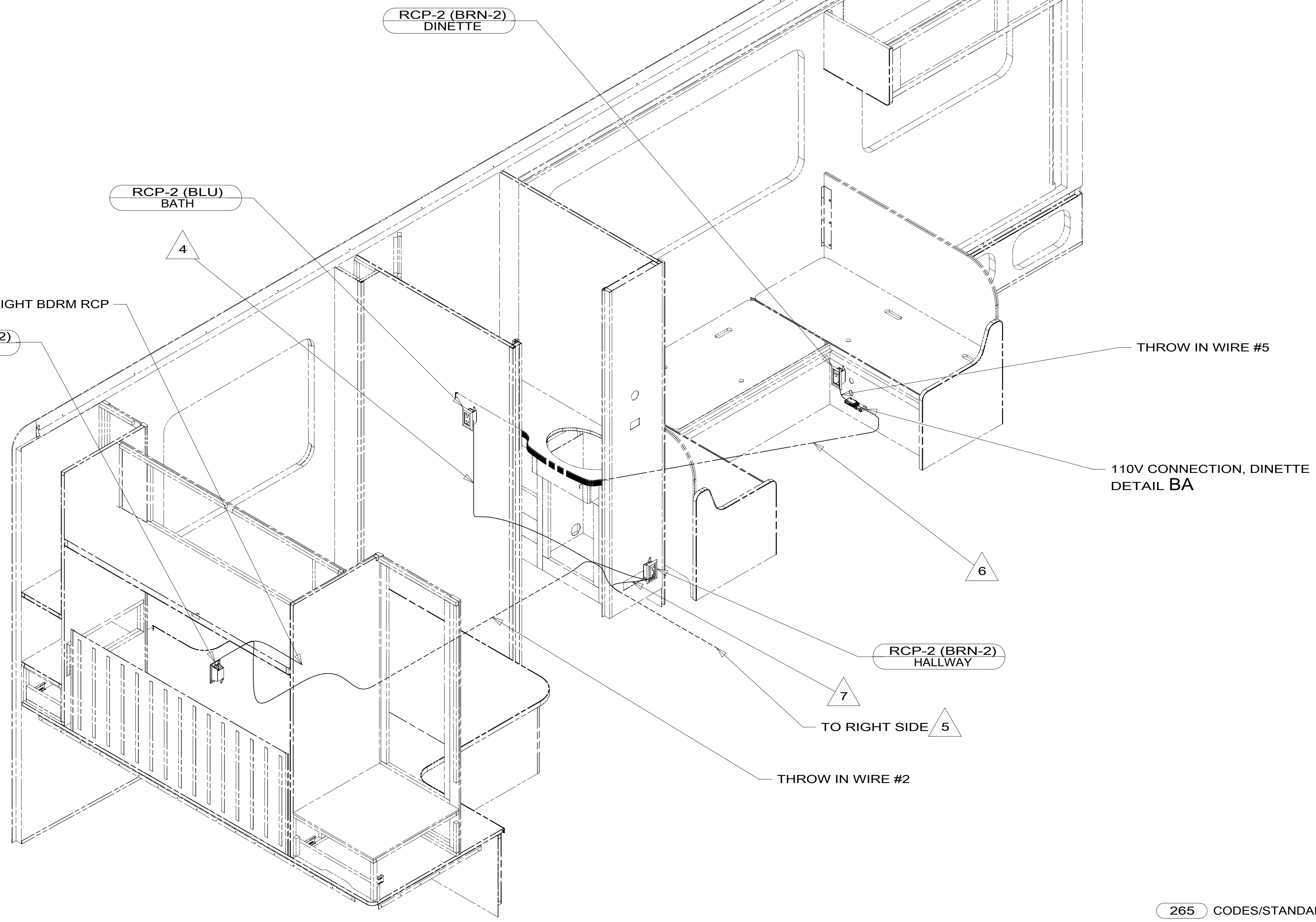
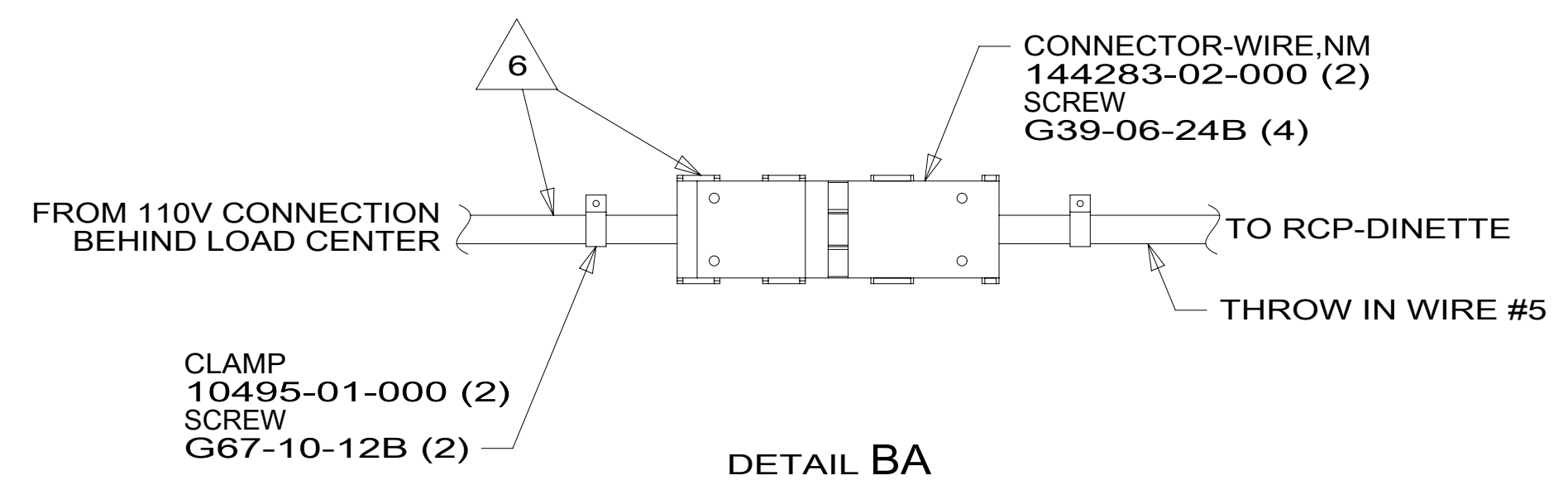
FOR ELECTRICAL TORQUE SPECIFICATIONS SEE DWG NO. 128783-01-000

FOR ELECTRICAL CALLOUTS SEE DWG NO. 121339-01-000

DESCRIPTION:
WIRING INSTL-BODY, 110V

SHEET: 1 OF 7 ITEM/PART NO.: 000039640 / 31996301000 REF: 1 03-Oct-2017

8 7 6 5 4 3 2 1



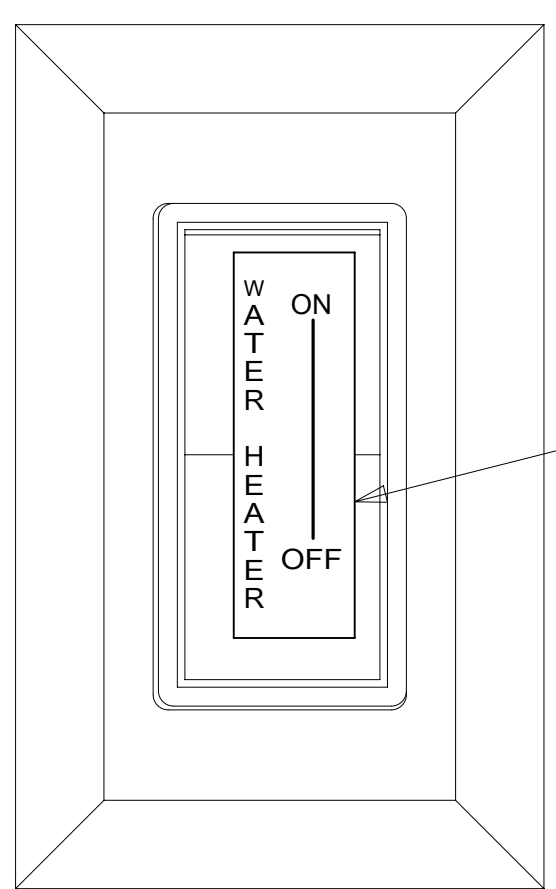
- NOTES:
- 7 LEAVE 600 MM OF BOTH BRN WIRES EXITING FROM FLOOR EXPOSED.
 - 6 CORD & CONNECTORS ARE PART OF WIRE ASM-CHASSIS.
 - 5 ROUTE WIRE THRU FLOOR.
 - 4 LEAVE 1700 MM OF BLU CIRCUIT EXITING FROM FLOOR EXPOSED.
 - 3. ALL GROUND WIRE TO BE COVERED WITH TUBING 8041-02-000.
 - 2. ALL 110V WIRE TO BE CLAMPED WITH CLAMP 10497-05-000 WITHIN 200MM OF OUTLET BOXES, USE SCREW G67-10-12B.
 - 1. AT MINIMUM ALL WIRES TO BE SUPPORTED AND SECURED PER CODE REQUIREMENTS. USE CLAMP 10495 OR 10497 OR WIRE TIE 8343 OR 108046 AND SCREW G67-XX-XXX OR G56-XX-XXX AS APPROPRIATE FOR INSTALLATION.

FOR ELECTRICAL TORQUE SPECIFICATIONS SEE DWG NO. 128783-01-000

FOR ELECTRICAL CALLOUTS SEE DWG NO. 121339-01-000

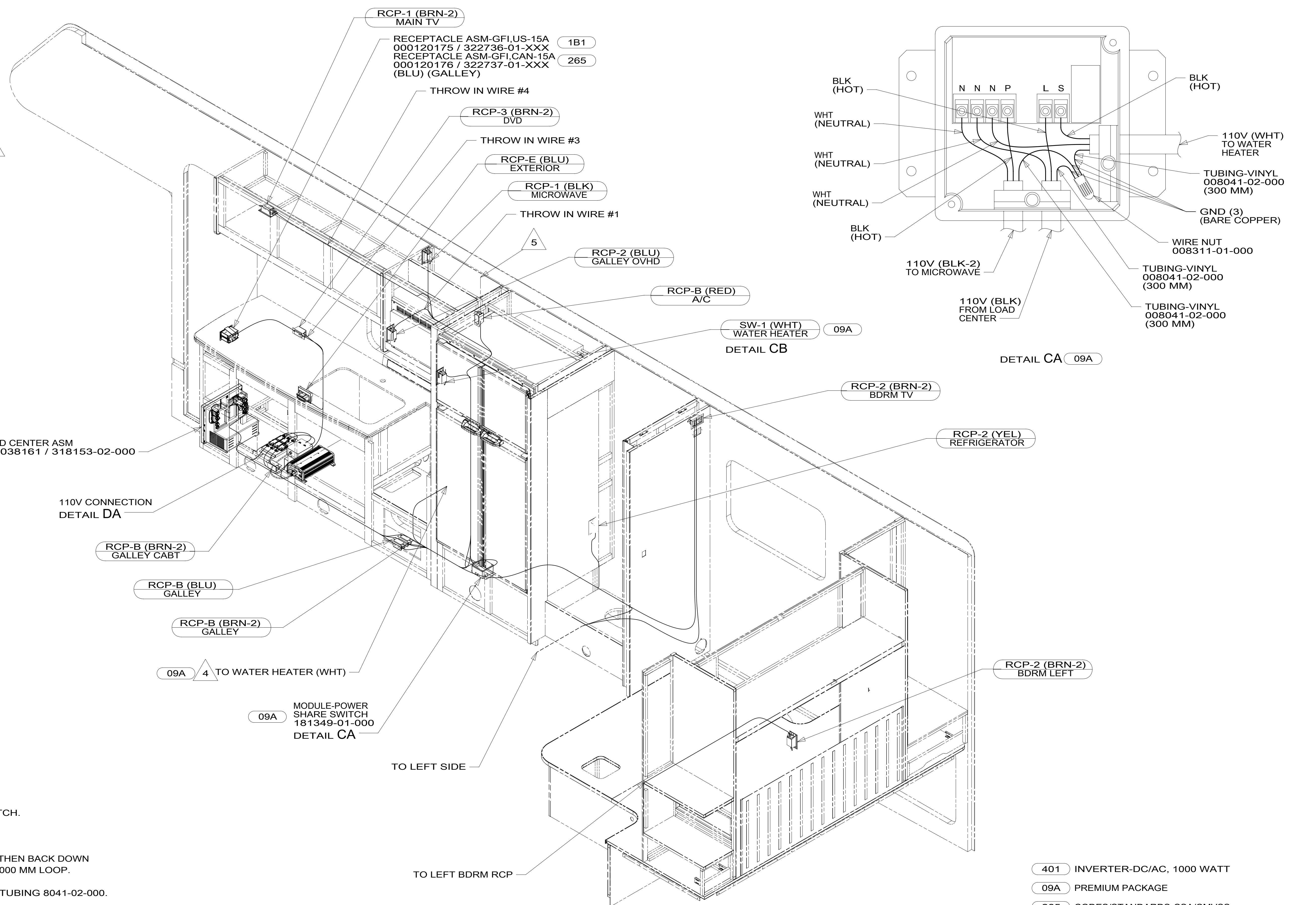
265 CODES/STANDARDS-CSA/CMVSS
 1B1 CODES/STANDARDS USA

DESCRIPTION:	
WIRING INSTL-BODY, 110V	
SHEET:	ITEM/PART NO.:
2 OF 7	000039640 / 31996301000
REV	



LABEL 83588-01-000 6

DETAIL CB 09A



LOAD CENTER ASM 000038161 / 318153-02-000

110V CONNECTION DETAIL DA

RCP-B (BRN-2) GALLEY CABT

RCP-B (BLU) GALLEY

RCP-B (BRN-2) GALLEY

09A 4 TO WATER HEATER (WHT)

09A MODULE-POWER SHARE SWITCH 181349-01-000 DETAIL CA

TO LEFT SIDE

TO LEFT BDRM RCP

- 6 APPLY LABEL DIRECTLY TO FRONT OF SWITCH.
- 5 WIRES IN ROOF.
- 4 LOOP WHT WIRE UP WALL THROUGH SWITCH THEN BACK DOWN WALL TO WATER HEATER APPROXIMATELY 2000 MM LOOP.

- 3. ALL GROUND WIRE TO BE COVERED WITH TUBING 8041-02-000.
- 2. ALL 110V WIRE TO BE CLAMPED WITH CLAMP 10497-05-000 WITHIN 200MM OF OUTLET BOXES, USE SCREW G67-10-12B.
- 1. AT MINIMUM ALL WIRES TO BE SUPPORTED AND SECURED PER CODE REQUIREMENTS. USE CLAMP 10495 OR 10497 OR WIRE TIE 8343 OR 108046 AND SCREW G67-XX-XXX OR G56-XX-XXX AS APPROPRIATE FOR INSTALLATION.

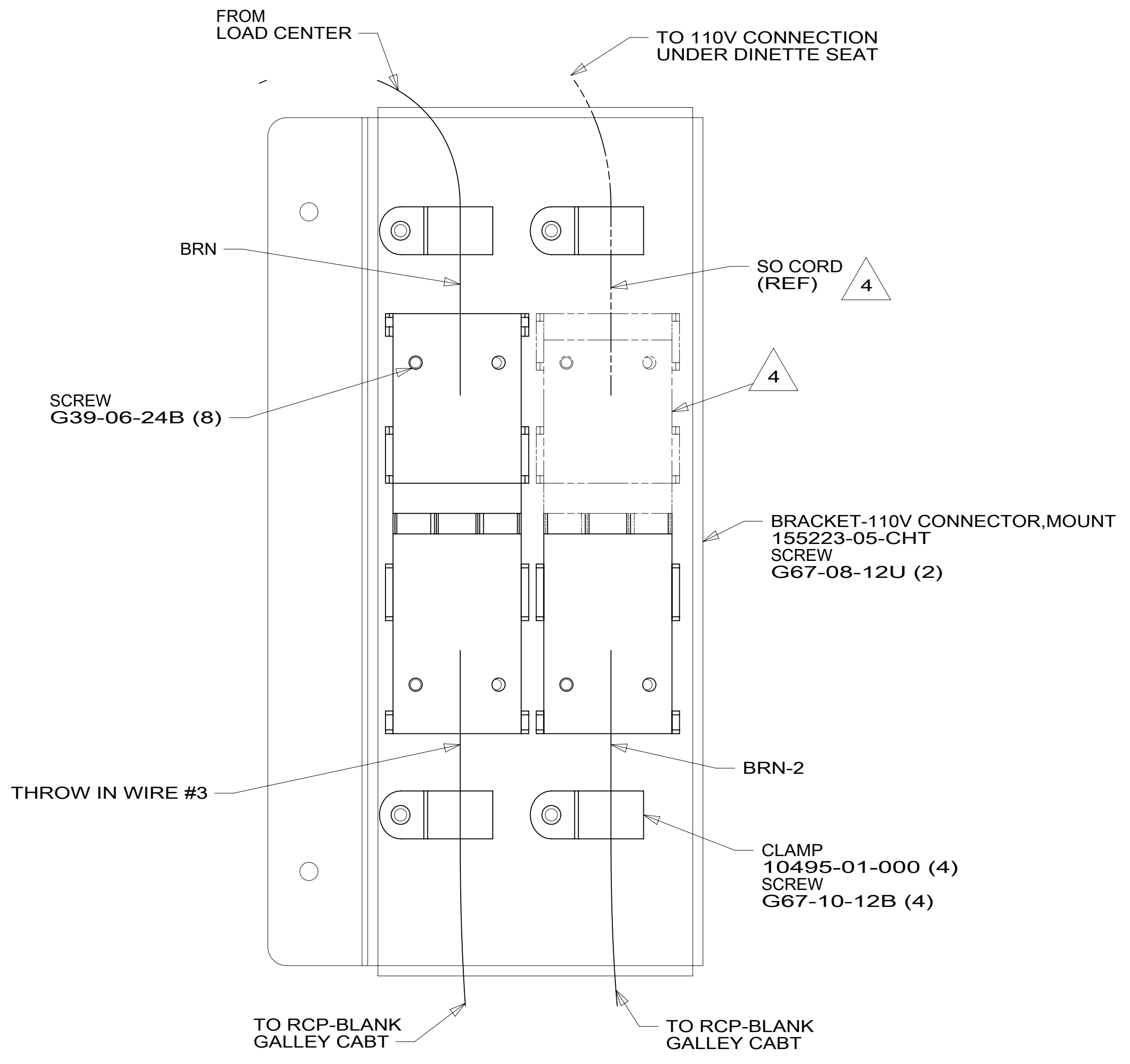
NOTES:

FOR ELECTRICAL TORQUE SPECIFICATIONS SEE DWG NO. 128783-01-000

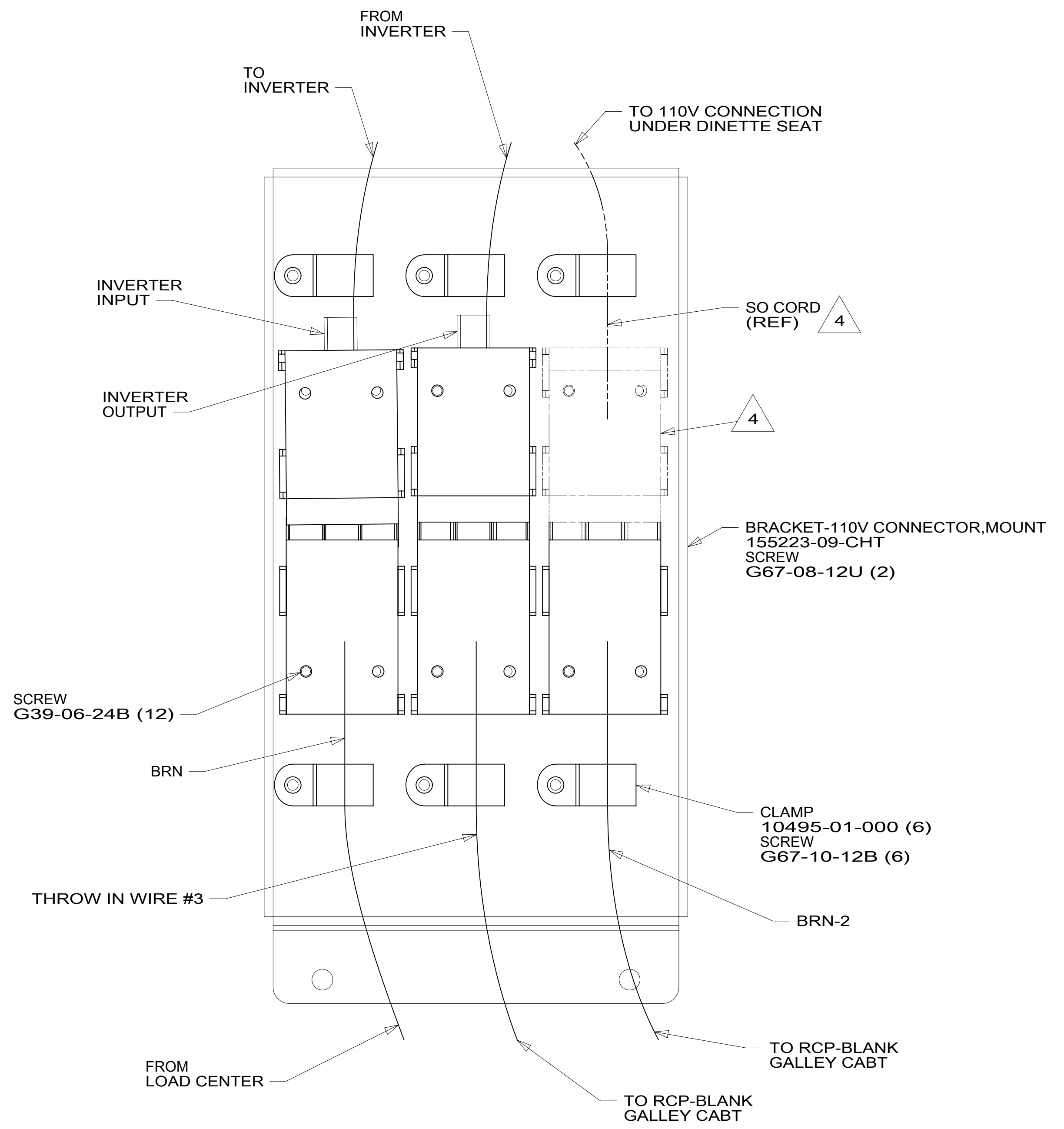
FOR ELECTRICAL CALLOUTS SEE DWG NO. 121339-01-000

- 401 INVERTER-DC/AC, 1000 WATT
- 09A PREMIUM PACKAGE
- 265 CODES/STANDARDS-CSA/CMVSS
- 1B1 CODES/STANDARDS USA

DESCRIPTION:		1B1 265	
WIRING INSTL-BODY, 110V			
SHEET:	ITEM/PART NO.:	REV:	
3 OF 7	000039640 / 31996301000		



DETAIL DA 40A



DETAIL DA 401

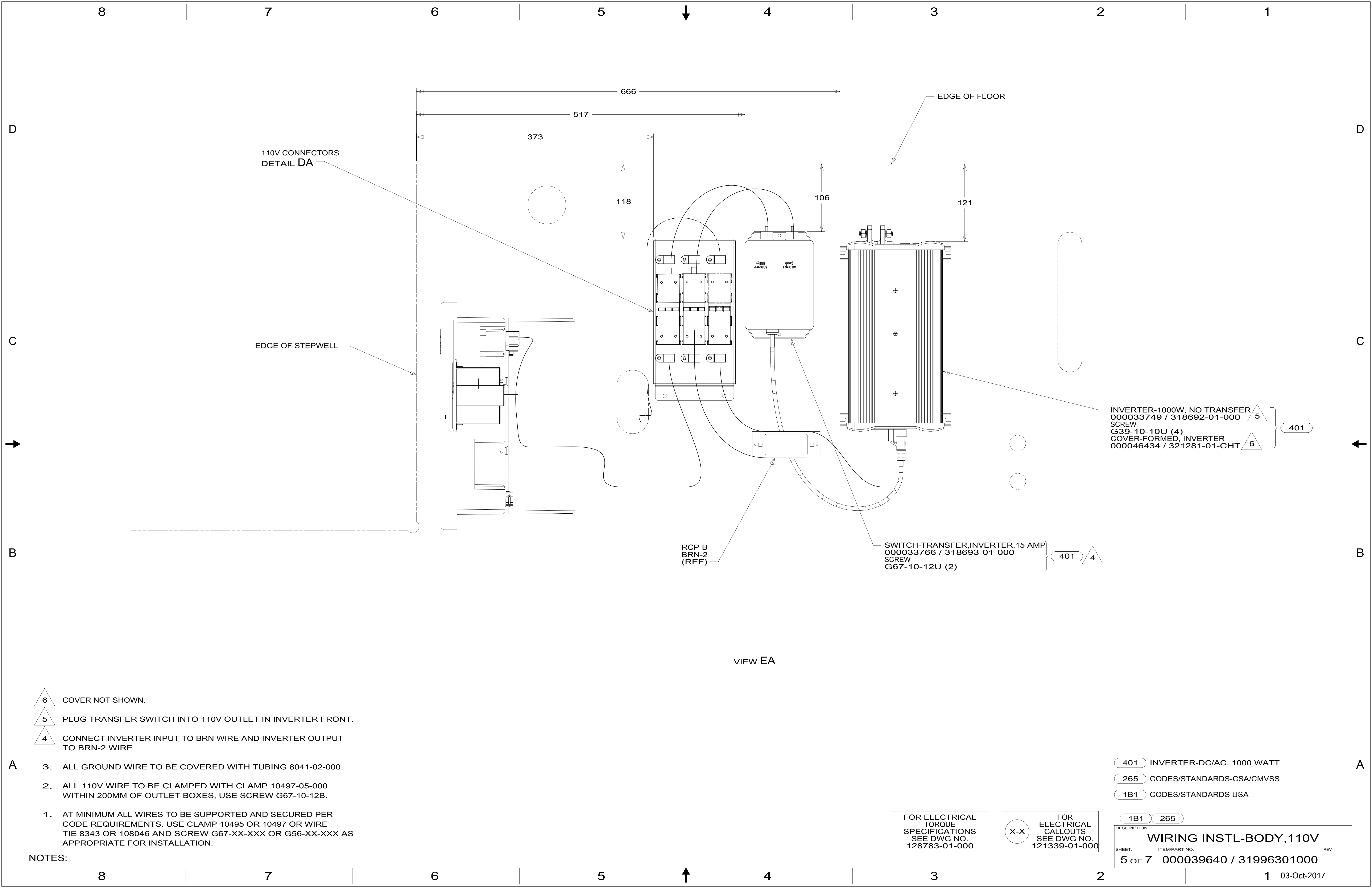
- NOTES:
- △ CORD AND CONNECTORS ARE PART OF WIRE ASM-CHASSIS.
 - 3. ALL GROUND WIRE TO BE COVERED WITH TUBING 8041-02-000.
 - 2. ALL 110V WIRE TO BE CLAMPED WITH CLAMP 10497-05-000 WITHIN 200MM OF OUTLET BOXES, USE SCREW G67-10-12B.
 - 1. AT MINIMUM ALL WIRES TO BE SUPPORTED AND SECURED PER CODE REQUIREMENTS. USE CLAMP 10495 OR 10497 OR WIRE TIE 8343 OR 108046 AND SCREW G67-XX-XXX OR G56-XX-XXX AS APPROPRIATE FOR INSTALLATION.

- 401 INVERTER-DC/AC, 1000 WATT
- 40A INVERTER-DC/AC WITHOUT
- 265 CODES/STANDARDS-CSA/CMVSS
- 1B1 CODES/STANDARDS USA

FOR ELECTRICAL TORQUE SPECIFICATIONS SEE DWG NO. 128783-01-000

FOR ELECTRICAL CALLOUTS SEE DWG NO. 121339-01-000

DESCRIPTION:	
1B1 265	
WIRING INSTL-BODY, 110V	
SHEET:	ITEM/PART NO. REV
4 OF 7	000039640 / 31996301000



110V CONNECTORS
DETAIL DA

EDGE OF STEPWELL

EDGE OF FLOOR

666
517
373

118

106

121

INVERTER-1000W, NO TRANSFER
000033749 / 318692-01-000
SCREW
G39-10-10U (4) } 401
COVER-FORMED, INVERTER
000046434 / 321281-01-CHT } 6

RCP-B
BRN-2
(REF)

SWITCH-TRANSFER, INVERTER, 15 AMP
000033766 / 318693-01-000
SCREW
G67-10-12U (2) } 401 } 4

VIEW EA

- 6 COVER NOT SHOWN.
- 5 PLUG TRANSFER SWITCH INTO 110V OUTLET IN INVERTER FRONT.
- 4 CONNECT INVERTER INPUT TO BRN WIRE AND INVERTER OUTPUT TO BRN-2 WIRE.

- 3. ALL GROUND WIRE TO BE COVERED WITH TUBING 8041-02-000.
- 2. ALL 110V WIRE TO BE CLAMPED WITH CLAMP 10497-05-000 WITHIN 200MM OF OUTLET BOXES, USE SCREW G67-10-12B.
- 1. AT MINIMUM ALL WIRES TO BE SUPPORTED AND SECURED PER CODE REQUIREMENTS. USE CLAMP 10495 OR 10497 OR WIRE TIE 8343 OR 108046 AND SCREW G67-XX-XXX OR G56-XX-XXX AS APPROPRIATE FOR INSTALLATION.

NOTES:

- 401 INVERTER-DC/AC, 1000 WATT
- 265 CODES/STANDARDS-CSA/CMVSS
- 1B1 CODES/STANDARDS USA

FOR ELECTRICAL
TORQUE
SPECIFICATIONS
SEE DWG NO.
128783-01-000

FOR
ELECTRICAL
CALLOUTS
SEE DWG NO.
121339-01-000

DESCRIPTION:	1B1 265	
WIRING INSTL-BODY, 110V		
SHEET:	ITEM/PART NO:	REV
5 OF 7	000039640 / 31996301000	

D

D

C

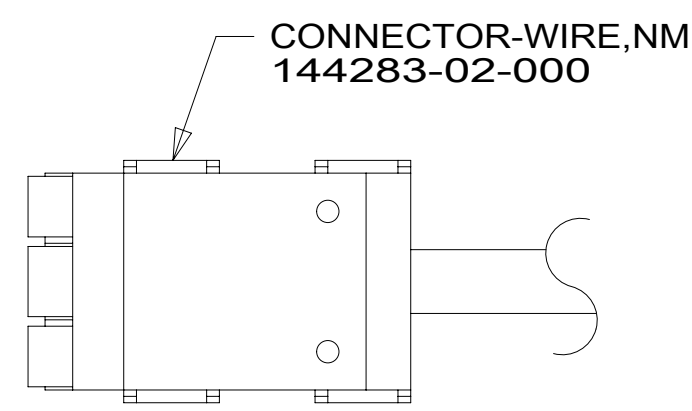
C

B

B

A

A



DETAIL EA

RED	1B1	136135-07-054	
	265	136136-07-054	
YEL	1B1	136131-05-042	
	265	136134-05-042	
BLK	1B1	136135-06-055	093
	265	136136-06-055	093
BLK	1B1	136135-06-035	09A
	265	136136-06-035	09A
BLK-2	1B1	136135-22-034	09A
	265	136136-22-034	09A
BRN	1B1	136131-03-010	4
	265	136134-03-010	4
BRN-2	1B1	136131-19-105	4
	265	136134-19-105	4
BLU	1B1	136131-02-130	
	265	136134-02-130	
WHT	1B1	136135-09-049	09A
	265	136136-09-049	09A
THROW IN WIRE #1	1B1	136131-02-029	
	265	136134-02-029	
THROW IN WIRE #2	1B1	136131-19-062	
	265	136134-19-062	
THROW IN WIRE #3	1B1	136131-19-020	4
	265	136134-19-020	4
THROW IN WIRE #4	1B1	136131-19-048	
	265	136134-19-048	
THROW IN WIRE #5	1B1	136131-19-004	4
	265	136134-19-004	4
MAIN EXTENSION CABLE ASM	1B1	164957-13-050	5
	265	164957-14-050	5
GROUND MAIN		136145-02-018	

5 WIRE PREP TO INSTALL ON POWER CORD BOX ASM OR AUTO TRANSFER SWITCH ASM. LOAD CENTER END WILL BE INSTALLED ON LINE.

4 SEE DETAIL EA FOR CONNECTOR INSTALLATION.

3. SEE WIRING INSTL-BODY, 12V FOR ADDITIONAL INFORMATION.

2. SECURE WIRES TO BACKSIDE OF LOAD CENTER WITH WIRE TIE 116673-01-000.

1. ALL GROUND WIRES TO BE COVERED WITH TUBING 8041-02-000.

NOTES:

- 09A PREMIUM PACKAGE
- 093 PREMIUM PACKAGE WITHOUT
- 265 CODES/STANDARDS-CSA/CMVSS
- 1B1 CODES/STANDARDS USA

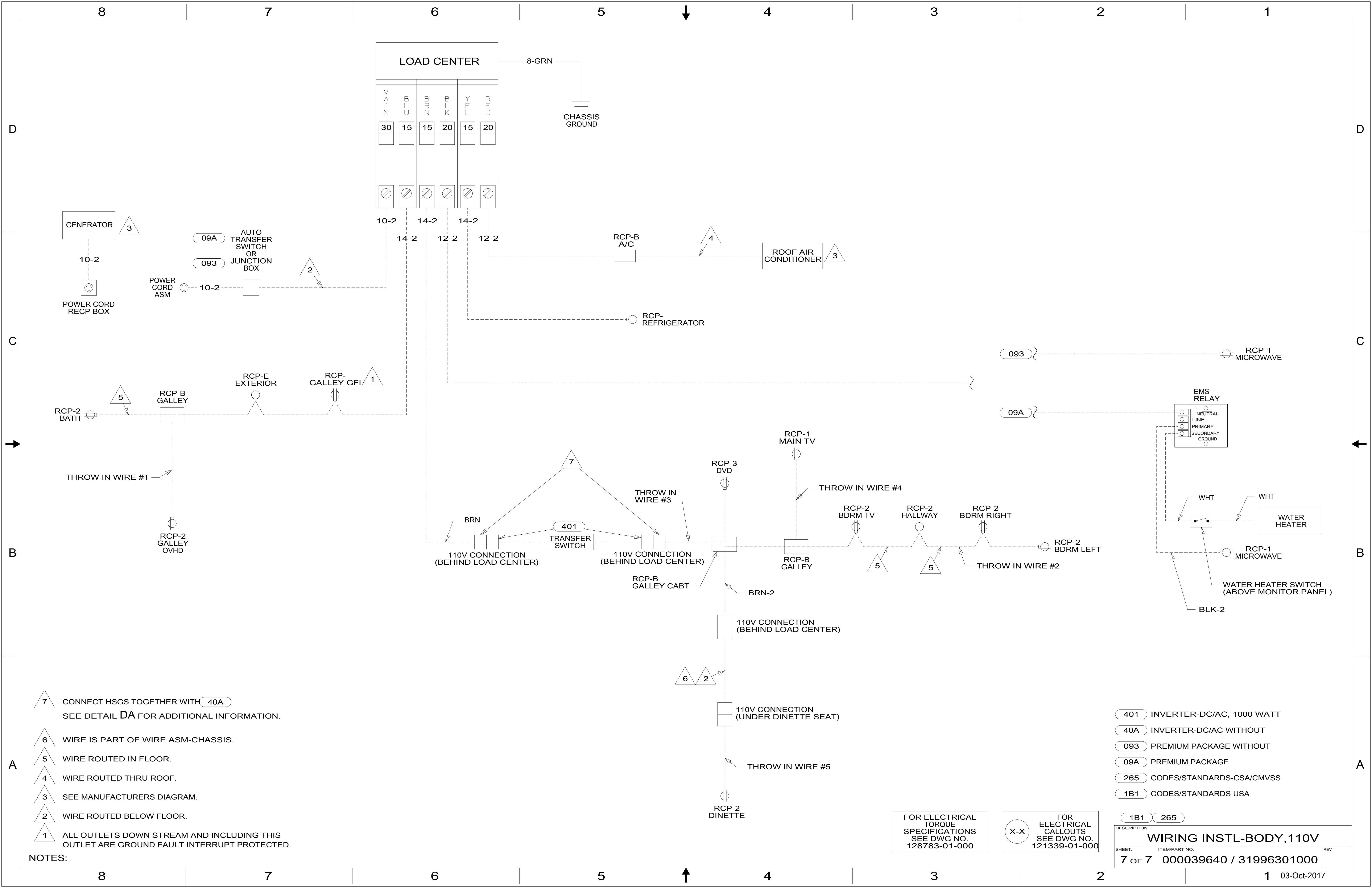
FOR ELECTRICAL TORQUE SPECIFICATIONS SEE DWG NO. 128783-01-000

FOR ELECTRICAL CALLOUTS SEE DWG NO. 121339-01-000

1B1 265

DESCRIPTION: WIRING INSTL-BODY, 110V

SHEET: 6 OF 7 ITEM/PART NO.: 000039640 / 31996301000 REV



- NOTES:**
- 7 CONNECT HSGS TOGETHER WITH 40A
SEE DETAIL DA FOR ADDITIONAL INFORMATION.
 - 6 WIRE IS PART OF WIRE ASM-CHASSIS.
 - 5 WIRE ROUTED IN FLOOR.
 - 4 WIRE ROUTED THRU ROOF.
 - 3 SEE MANUFACTURERS DIAGRAM.
 - 2 WIRE ROUTED BELOW FLOOR.
 - 1 ALL OUTLETS DOWN STREAM AND INCLUDING THIS
OUTLET ARE GROUND FAULT INTERRUPT PROTECTED.

- 401 INVERTER-DC/AC, 1000 WATT
- 40A INVERTER-DC/AC WITHOUT
- 093 PREMIUM PACKAGE WITHOUT
- 09A PREMIUM PACKAGE
- 265 CODES/STANDARDS-CSA/CMVSS
- 1B1 CODES/STANDARDS USA

FOR ELECTRICAL
TORQUE
SPECIFICATIONS
SEE DWG NO.
128783-01-000

FOR ELECTRICAL
CALLOUTS
SEE DWG NO.
121339-01-000

DESCRIPTION: WIRING INSTL-BODY, 110V		
SHEET: 7 OF 7	ITEM/PART NO.: 000039640 / 31996301000	REV
		03-Oct-2017