

8

7

6

5



4

3

2

1

D

D

C

C



B

B

A

A

8

7

6

5



4

3

2

1

CABLE ASM-STARTER (RED)	141415-32-042	
CABLE ASM-COACH BATTERY (YEL)	141415-52-014	
CABLE ASM-COACH BATTERY GND (BLK)	133566-12-008	
CABLE ASM-GENERATOR (GRN)	141415-42-042	
CABLE ASM-GENERATOR GND (BLK)	133566-12-008	
CABLE ASM-STARTER,EXT (RED 2)	141415-32-009	
LEVELING SYSTEM GROUND CABLE (BLK)	133566-12-005	60M
LEVELING SYSTEM POWER CABLE (BLU)	141415-22-025	60M
CABLE ASM-INVERTER FUSE (ORG)	141415-62-006	401
CABLE ASM-INVERTER (ORG)	141415-62-022	401
CABLE ASM-INVERTER GND (BLK)	133566-12-024	401
CABLE ASM-INVERTER CASE GND (GRN)	136145-05-016	401

60M

60M

401

401

401

401

60M HYDRAULIC LEVEL JACKS-AUTO

401 INVERTER-DC/AC, 1000 WATT

265 CODES/STANDARDS-CSA/CMVSS

1B1 CODES/STANDARDS USA

1B1 265



COPYRIGHT 2016 WINNEBAGO INDUSTRIES, INC.

DSNR:		ALL DIMENSIONS ARE IN MILLIMETERS		
DFFR:		MATERIAL:		
UNSPECIFIED TOLERANCES:				
WHOLE DIM (X)	: 3			
ONE-PLACE (X.X)	: 1.5			
TWO-PLACE (X.XX)	: 0.50			
ANGLE	: 1°			

REFER TO ES0018 FOR FASTENER TIGHTENING GUIDELINES

WEIGHT: (LBS) FIRST USED: 18 331K

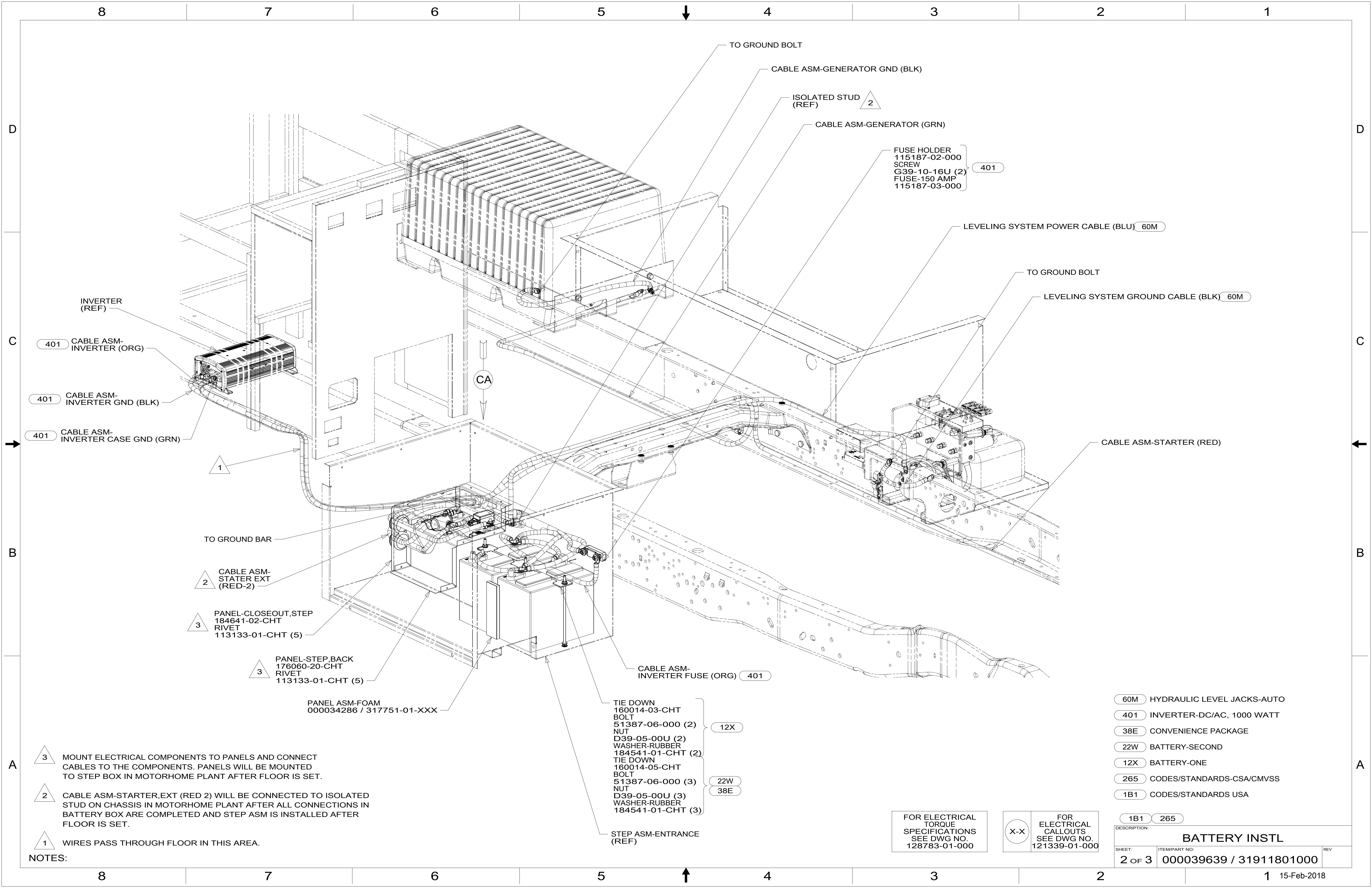
BATTERY INSTL

SHEET:	ITEM/PART NO.:	REV:
1 OF 3	000039639 / 31911801000	

REF: 1 15-Feb-2018

FOR ELECTRICAL TORQUE SPECIFICATIONS SEE DWG NO. 128783-01-000

FOR ELECTRICAL CALLOUTS SEE DWG NO. 121339-01-000



- 3 MOUNT ELECTRICAL COMPONENTS TO PANELS AND CONNECT CABLES TO THE COMPONENTS. PANELS WILL BE MOUNTED TO STEP BOX IN MOTORHOME PLANT AFTER FLOOR IS SET.
- 2 CABLE ASM-STARTER,EXT (RED 2) WILL BE CONNECTED TO ISOLATED STUD ON CHASSIS IN MOTORHOME PLANT AFTER ALL CONNECTIONS IN BATTERY BOX ARE COMPLETED AND STEP ASM IS INSTALLED AFTER FLOOR IS SET.
- 1 WIRES PASS THROUGH FLOOR IN THIS AREA.

NOTES:

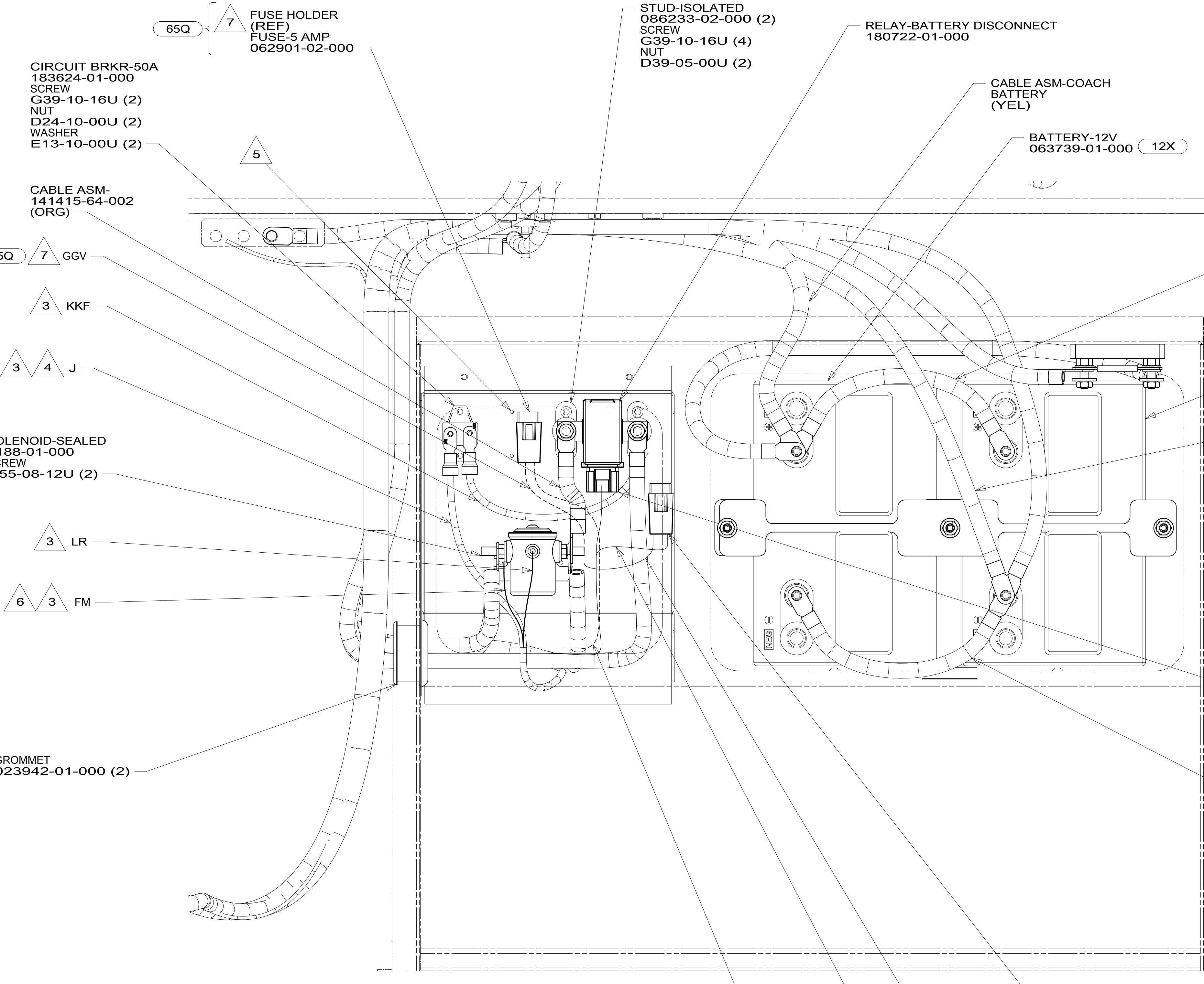
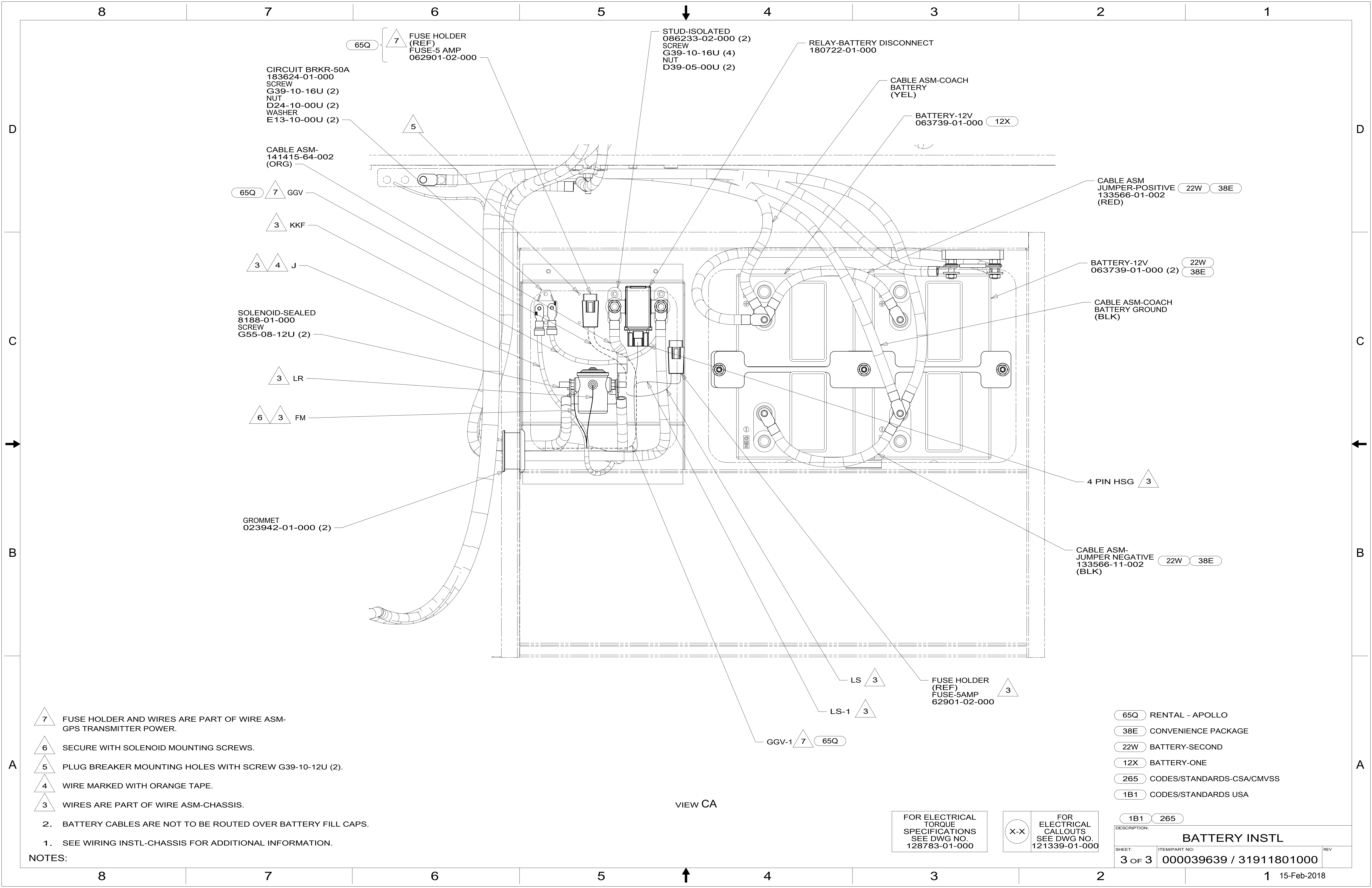
- TIE DOWN 160014-03-CHT BOLT 51387-06-000 (2) NUT D39-05-00U (2) WASHER-RUBBER 184541-01-CHT (2) TIE DOWN 160014-05-CHT BOLT 51387-06-000 (3) NUT D39-05-00U (3) WASHER-RUBBER 184541-01-CHT (3)

FOR ELECTRICAL TORQUE SPECIFICATIONS SEE DWG NO. 128783-01-000

FOR ELECTRICAL CALLOUTS SEE DWG NO. 121339-01-000

- 60M HYDRAULIC LEVEL JACKS-AUTO
- 401 INVERTER-DC/AC, 1000 WATT
- 38E CONVENIENCE PACKAGE
- 22W BATTERY-SECOND
- 12X BATTERY-ONE
- 265 CODES/STANDARDS-CSA/CMVSS
- 1B1 CODES/STANDARDS USA

DESCRIPTION:		1B1 265
<b>BATTERY INSTL</b>		
SHEET:	ITEM/PART NO:	REV:
2 OF 3	000039639 / 31911801000	



- 7 FUSE HOLDER AND WIRES ARE PART OF WIRE ASM-GPS TRANSMITTER POWER.
- 6 SECURE WITH SOLENOID MOUNTING SCREWS.
- 5 PLUG BREAKER MOUNTING HOLES WITH SCREW G39-10-12U (2).
- 4 WIRE MARKED WITH ORANGE TAPE.
- 3 WIRES ARE PART OF WIRE ASM-CHASSIS.

- 2. BATTERY CABLES ARE NOT TO BE ROUTED OVER BATTERY FILL CAPS.
- 1. SEE WIRING INSTL-CHASSIS FOR ADDITIONAL INFORMATION.

NOTES:

FOR ELECTRICAL TORQUE SPECIFICATIONS SEE DWG NO. 128783-01-000

FOR ELECTRICAL CALLOUTS SEE DWG NO. 121339-01-000

- 65Q RENTAL - APOLLO
- 38E CONVENIENCE PACKAGE
- 22W BATTERY-SECOND
- 12X BATTERY-ONE
- 265 CODES/STANDARDS-CSA/CMVSS
- 1B1 CODES/STANDARDS USA

DESCRIPTION:		1B1 265
<b>BATTERY INSTL</b>		
SHEET:	ITEM/PART NO.:	REV
3 OF 3	000039639 / 31911801000	

VIEW CA