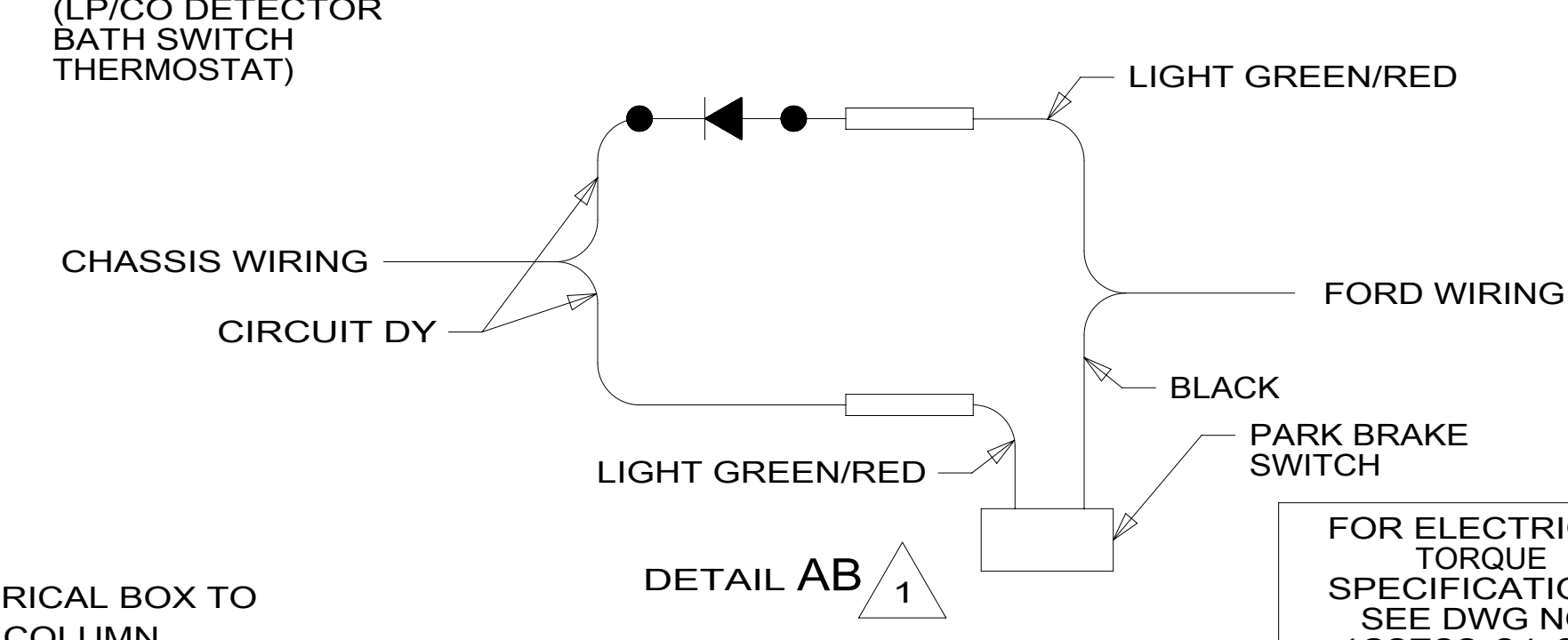


- NOTES:**
- 7 SEE WIRING INSTL-BODY, 12V FOR ADDITIONAL INFORMATION.
  - 6 FUSE LOCATED UNDER DASH BY PARK BRAKE ASM.
  - 5 SEE RADIO/MONITOR INSTL FOR ADDITIONAL INFORMATION.
  - 4 FUSE LOCATED UNDER DASH BY STEERING COLUMN.
  - 3. USE WIRE TIES 8343-04-000 AND 116673-02-000 APPROXIMATELY 600MM ON CENTER UNLESS OTHERWISE SPECIFIED.
  - 2. SECURE CONDUIT 41953, TAB AS REQUIRED, OVER ALL WIRES IN CONTACT WITH SHARP EDGES.
  - 1 CUT LIGHT GREEN/RED WIRE FROM PARK BRAKE SWITCH AND RECONNECT TO CIRCUIT DY OF CHASSIS ASM AS SHOWN.

8 WIRE ASM TO BE ROUTED FROM CHASSIS ELECTRICAL BOX TO GPS TRANSMITTER IN POCKET UNDER STEERING COLUMN.



FOR ELECTRICAL TORQUE SPECIFICATIONS SEE DWG NO. 128783-01-000

FOR ELECTRICAL CALLOUTS SEE DWG NO. 121339-01-000

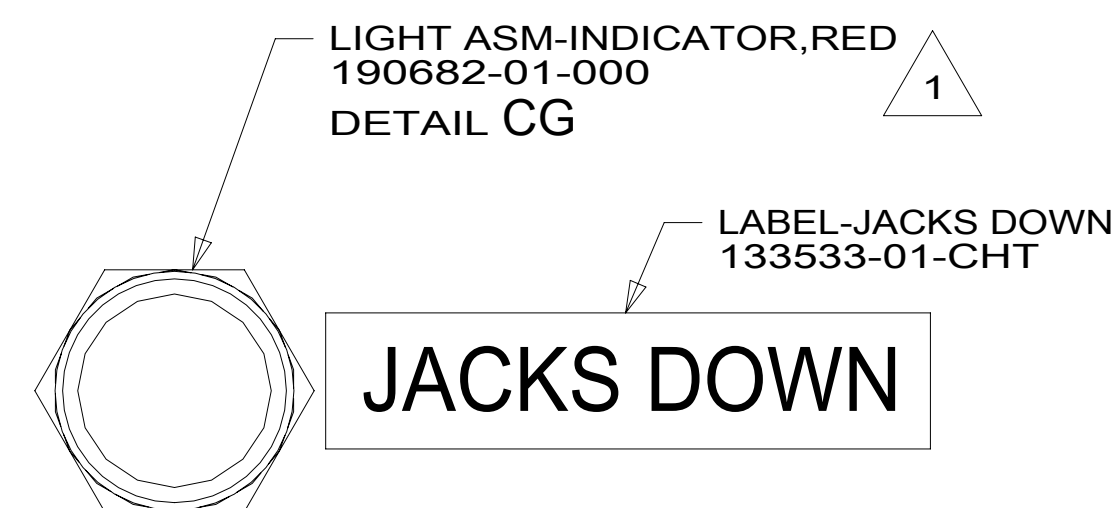
- 65Q RENTAL - APOLLO
- 09A PREMIUM PACKAGE
- 60M HYDRAULIC LEVEL JACKS-AUTO
- 283 MIRRORS-UPGRADE W/CAMERA
- 965 SEAT PEDESTALS-SWIVEL/SLIDE
- 265 CODES/STANDARDS-CSA/CMVSS
- 1B1 CODES/STANDARDS USA

**WINNEBAGO**  
COPYRIGHT 2016 WINNEBAGO INDUSTRIES, INC.

DSNR:	ALL DIMENSIONS ARE IN MILLIMETERS
DFFR:	MATERIAL:
UNSPECIFIED TOLERANCES:	
WHOLE DIM (X) :	3
ONE-PLACE (X.X) :	1.5
TWO-PLACE (X.XX) :	0.50
ANGLE :	1°
REFER TO ES0018 FOR FASTENER TIGHTENING GUIDELINES	WEIGHT: (LBS) FIRST USED: <b>18 331K</b>
DESCRIPTION: <b>WIRING INSTL-CHASSIS</b>	
SHEET: <b>1 OF 3</b>	ITEM/PART NO: <b>000039444 / 31907101000</b>
REF:	REV

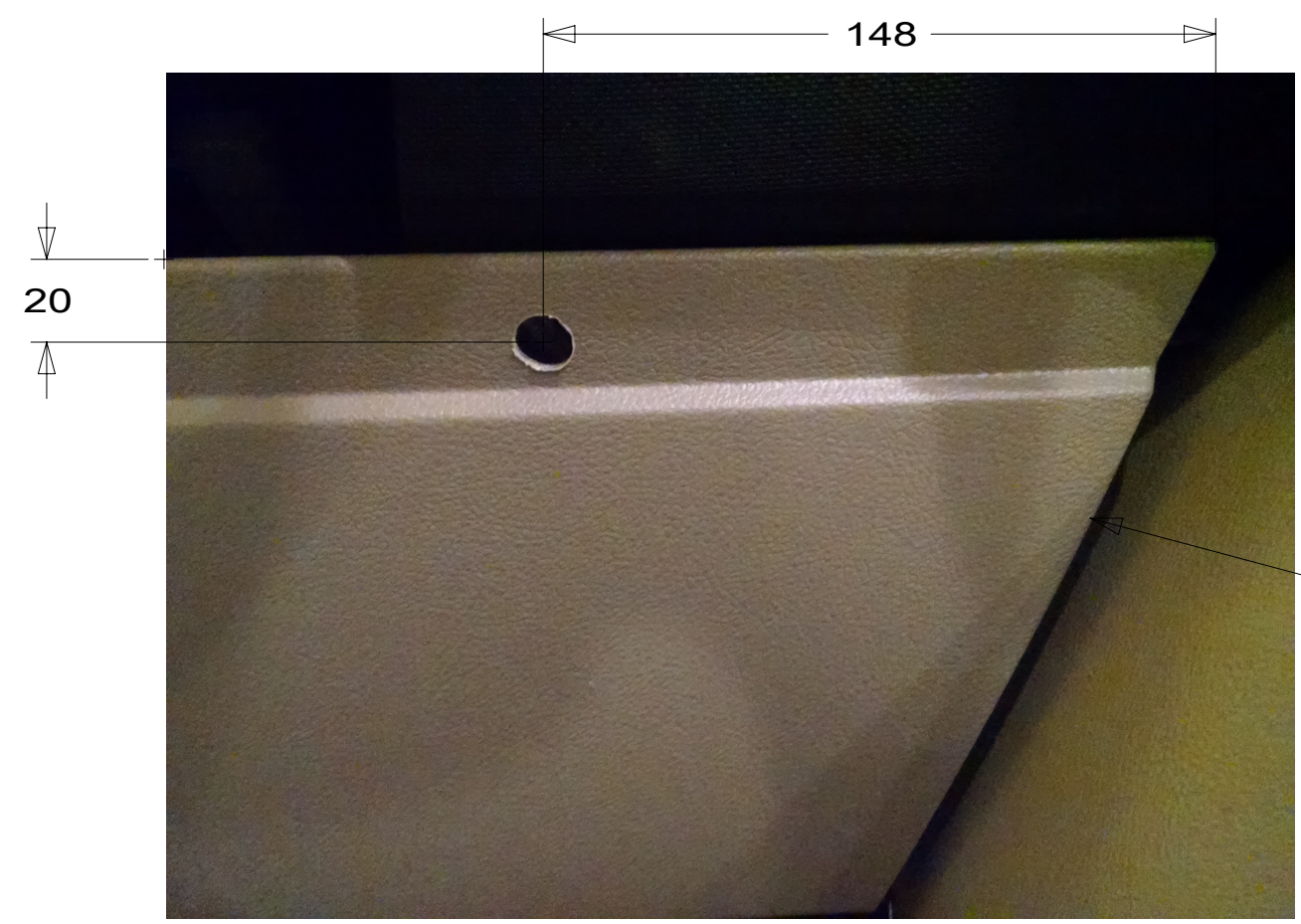






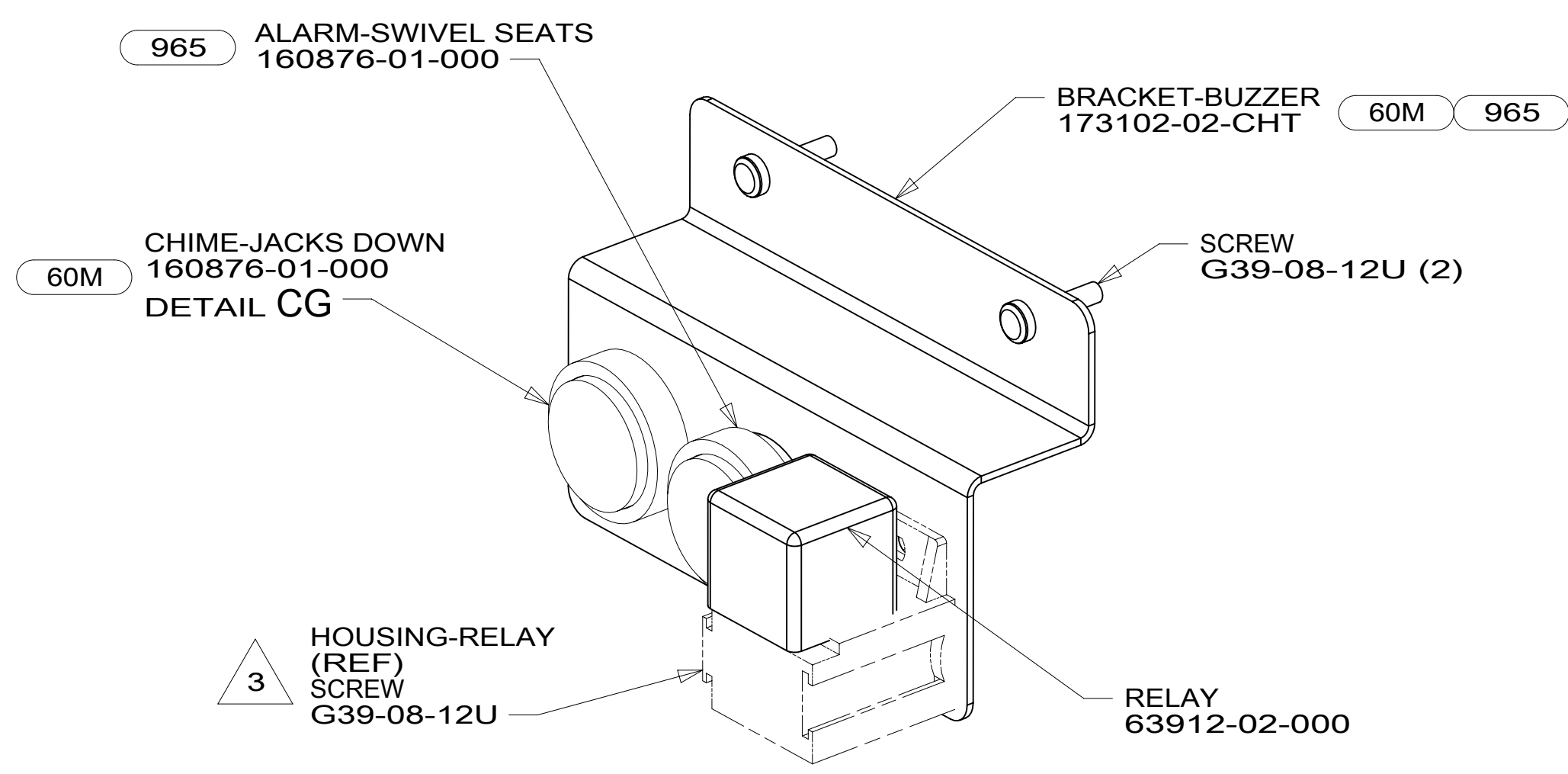
**JACKS DOWN**

VIEW CE 60M

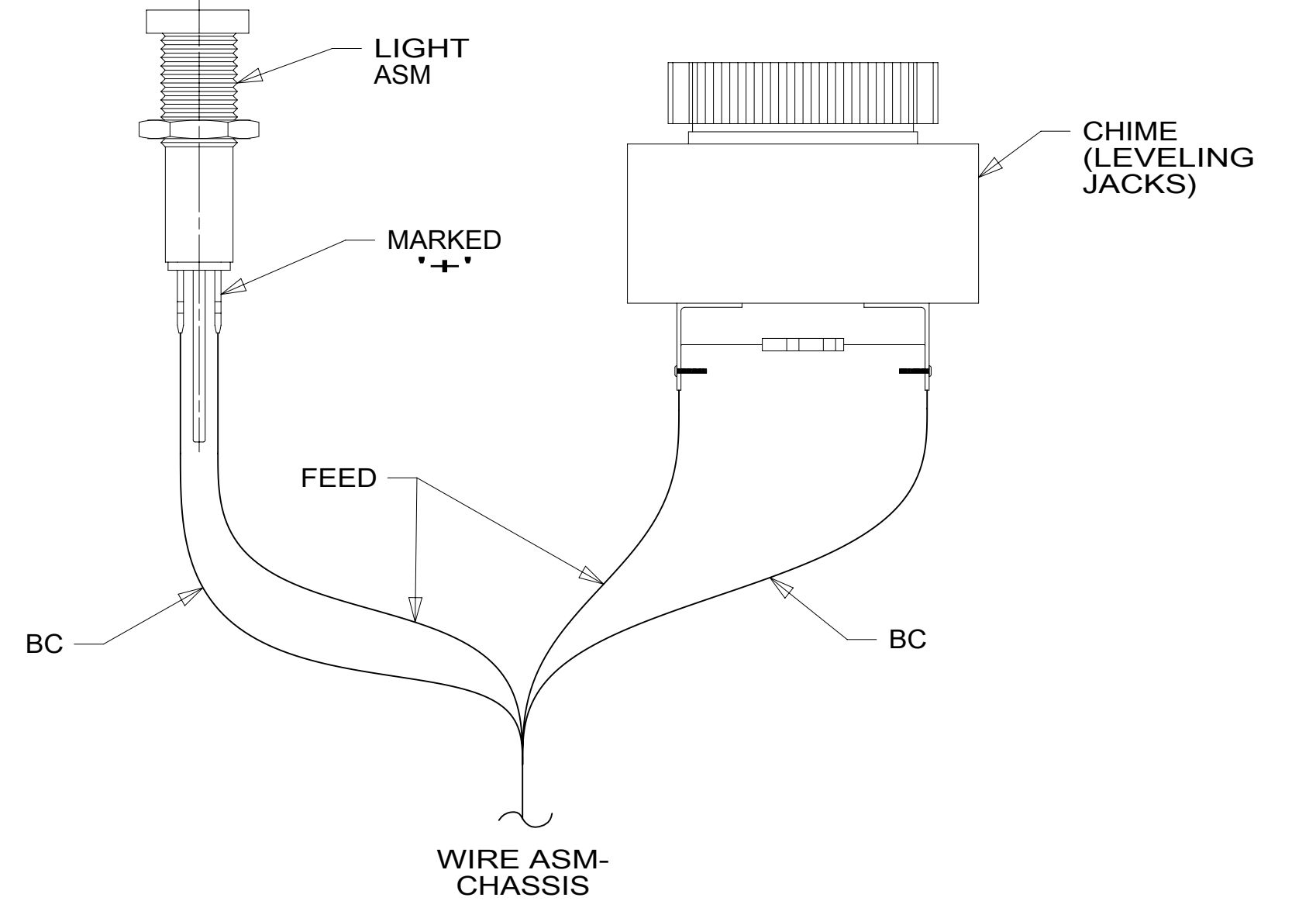


DETAIL CF 60M

RIGHT SIDE OF STEERING COLUMN

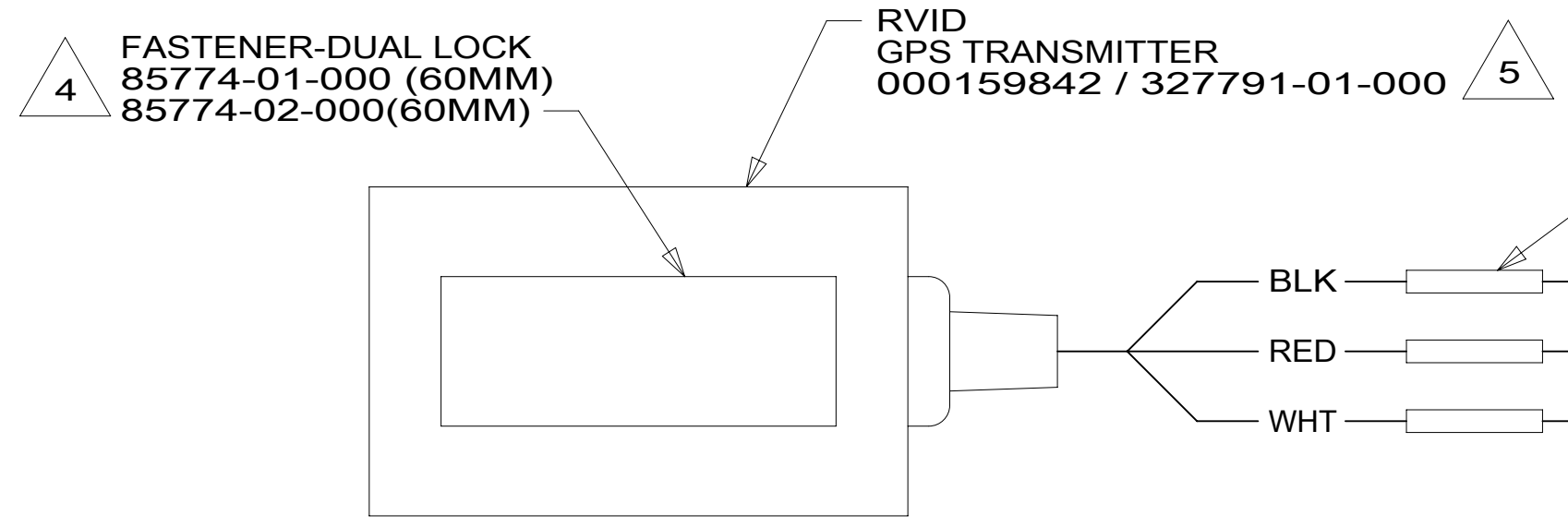


VIEW CD

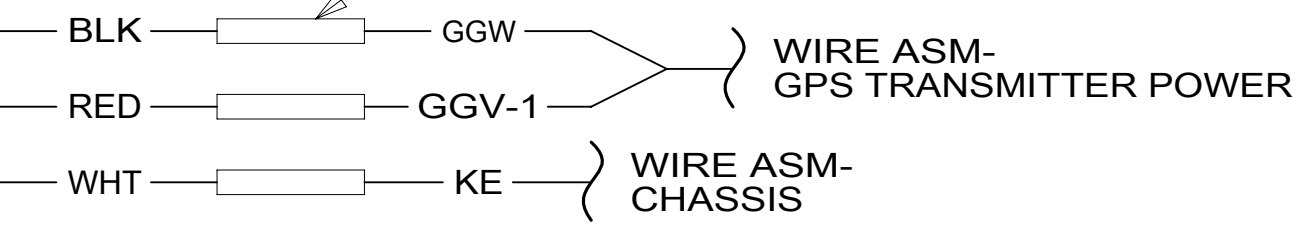


WIRE ASM-CHASSIS

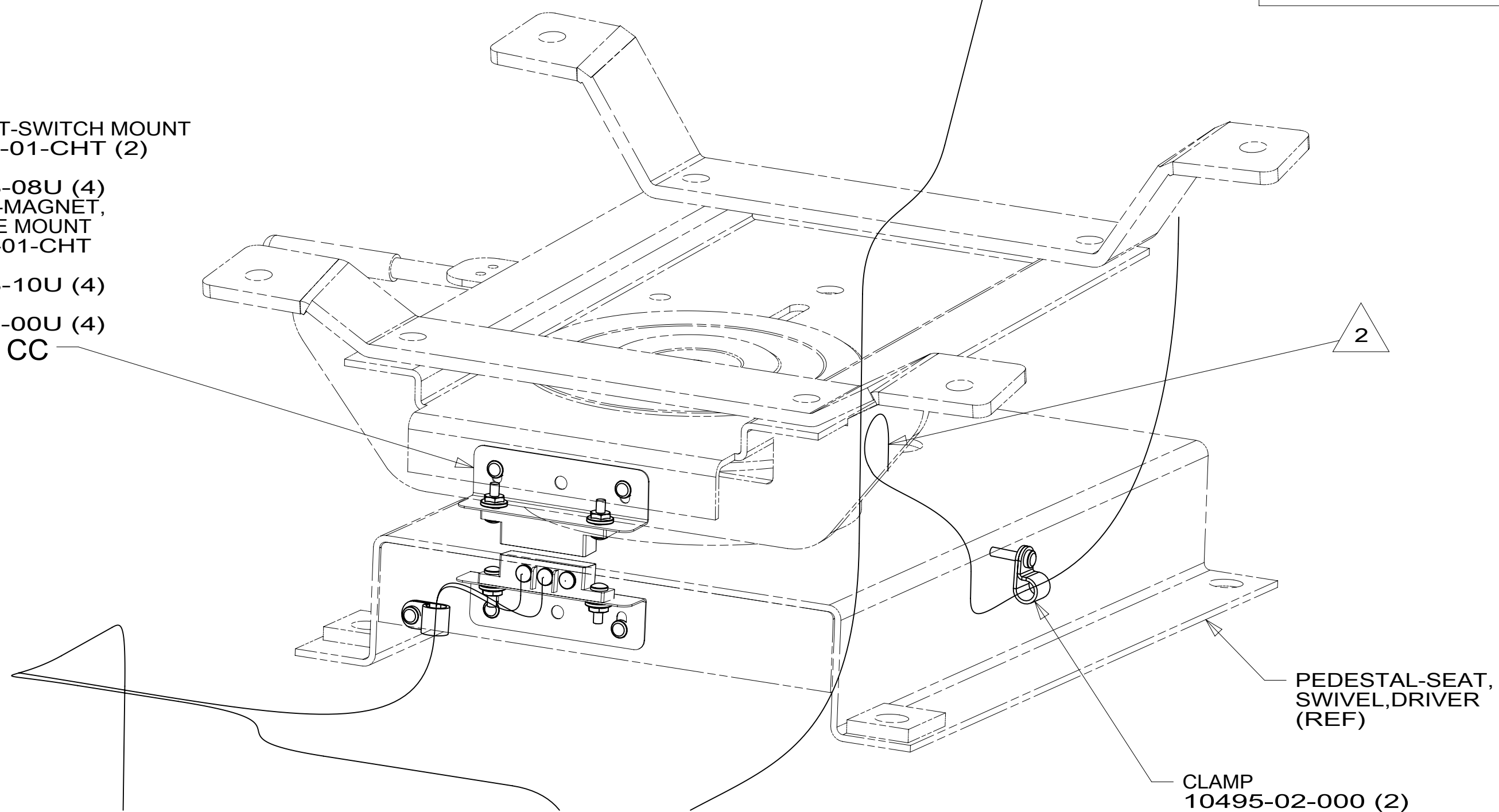
DETAIL CG 60M



VIEW CH 65Q



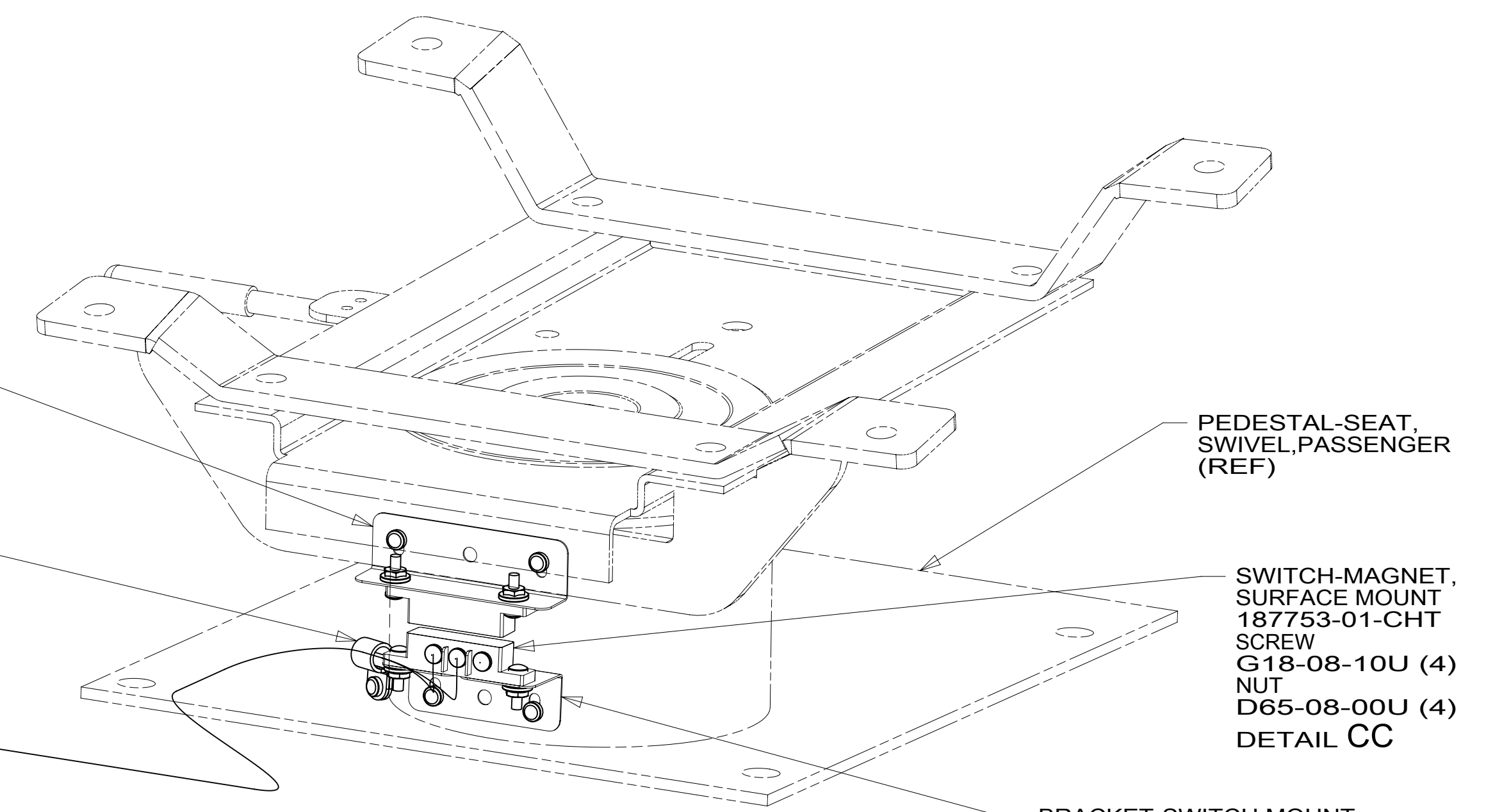
- BRACKET-SWITCH MOUNT 187994-01-CHT (2)
- SCREW G39-08-08U (4)
- SWITCH-MAGNET, SURFACE MOUNT 187753-01-CHT
- SCREW G18-08-10U (4)
- NUT D65-08-00U (4)
- DETAIL CC



DETAIL CA 965

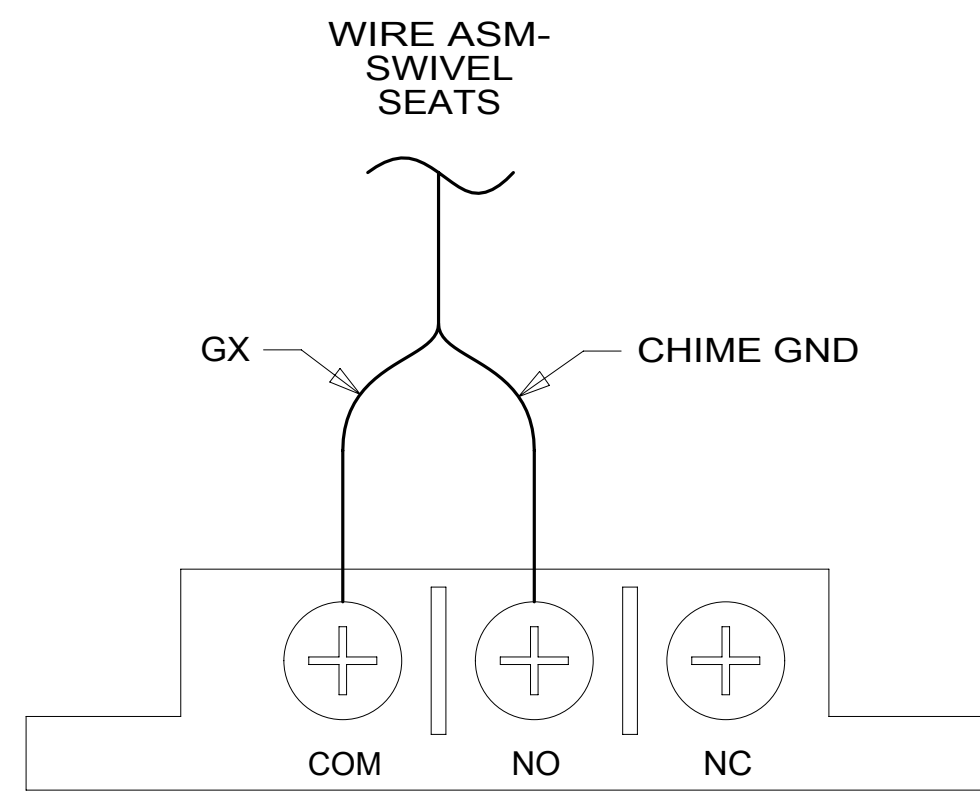
- BRACKET-SWITCH MOUNT 187994-01-CHT
- SCREW G39-08-08U (2)

- CLAMP 10495-02-000
- SCREW G39-08-06U



DETAIL CB 965

- NOTES:
- 5 LABEL ON TRANSMITTER MUST FACE UPWARD.
  - 4 ATTACH DUAL LOCK TO BOTTOM OF TRANSMITTER AND ATTACH TO BOTTOM OF POCKET IN DASH UNDER STEERING COLUMN.
  - 3 PART OF WIRE ASM-SWIVEL SEATS.
  - 2 COVER FORD WIRING WITH CONVOLUTE 41953-01-000 (150 MM) TO PROTECT WIRES FROM SHARP EDGES WHERE THEY PASS THROUGH SEAT PEDESTAL. SECURE BOTH ENDS TO WIRES WITH TAPE 8363-01-000.
  - 1 FOR HOLE SIZE AND LOCATION SEE DETAIL CF.



DETAIL CC

FOR ELECTRICAL TORQUE SPECIFICATIONS SEE DWG NO. 128783-01-000

FOR ELECTRICAL CALLOUTS SEE DWG NO. 121339-01-000

- 65Q RENTAL - APOLLO
- 60M HYDRAULIC LEVEL JACKS-AUTO
- 965 SEAT PEDESTALS-SWIVEL/SLIDE
- 265 CODES/STANDARDS-CSA/CMVSS
- 1B1 CODES/STANDARDS USA

DESCRIPTION:		1B1 265
<b>WIRING INSTL-CHASSIS</b>		
SHEET:	ITEM/PART NO.:	REV:
3 OF 3	000039444 / 31907101000	