

- 13. ATTACH SEAL TO BRACE WHERE IT CONTACTS HEATER PAD.
- 12. APPLY 1/4" BEAD OF SILICONE (131264-05-CHT) TO FLANGE BEFORE INSTALLATION AND THEN CAP SEAL SINK/COLIAN COUNTER TOP WITH SILICONE (131264-05-CHT).
- 11. PREP THE SURFACE PER MANUFACTURERS INSTRUCTIONS BEFORE APPLYING THE HEATING PAD.
- 10. SEE WIRING INSTL-BODY FOR ELECTRICAL CONNECTION.
- 9. SEE DRAWING 061607 FOR INSTALLATION OF GROMMETS.
- 8. SECURE DRAINAGE PIPES TO CABINET USING WIRE TIE 108046-02-000, AND SCREW 000G67-10-12U AT INTERVALS OF NOT OF NOT MORE THAN 4 FEET APART.
- 7. SECURE VENT PIPE TO FLOOR WITH CLAMP 000156237 / 326663-02-000 (2), SCREW 000G67-10-12U (2), BRACKET 136878-01-CHT (2).
- 6. VENT PIPE MUST PROJECT 51 MIN AND 64 MAX ABOVE ROOF FOR PROPER FIT AND FUNCTION. ADD S-1 (000156099 / 326607-01-CHT SEAL-VENT PIPE) AROUND PIPE ON ROOF BEFORE VENT CAP IS INSTALLED.
- 5. SEAL AROUND SHOWER WITH SILICONE.
- 4. USE SMOOTH PLUMBERS PUTTY 167459-01-000 TO SEAL STRAINER (0.2 PER STRAINER).
- 3. ALL PIPE AND FITTINGS TO BE ASSEMBLED WITH SOLVENT 004020-01-000 (USA), 004020-02-000 (CAN)
- 2. SLOPE OF TRAP ARM MUST BE 6 PER 305 mm.
- 1. SLOPE OF HORIZONTAL PIPING TO BE MINIMUM OF 3 PER 305 mm.

- 23T DRAINAGE SYSTEM-HEATED
- 093 PREMIUM PACKAGE WITHOUT
- 09A PREMIUM PACKAGE
- 265 CODES/STANDARDS-CSA/CMVSS
- 1B1 CODES/STANDARDS USA

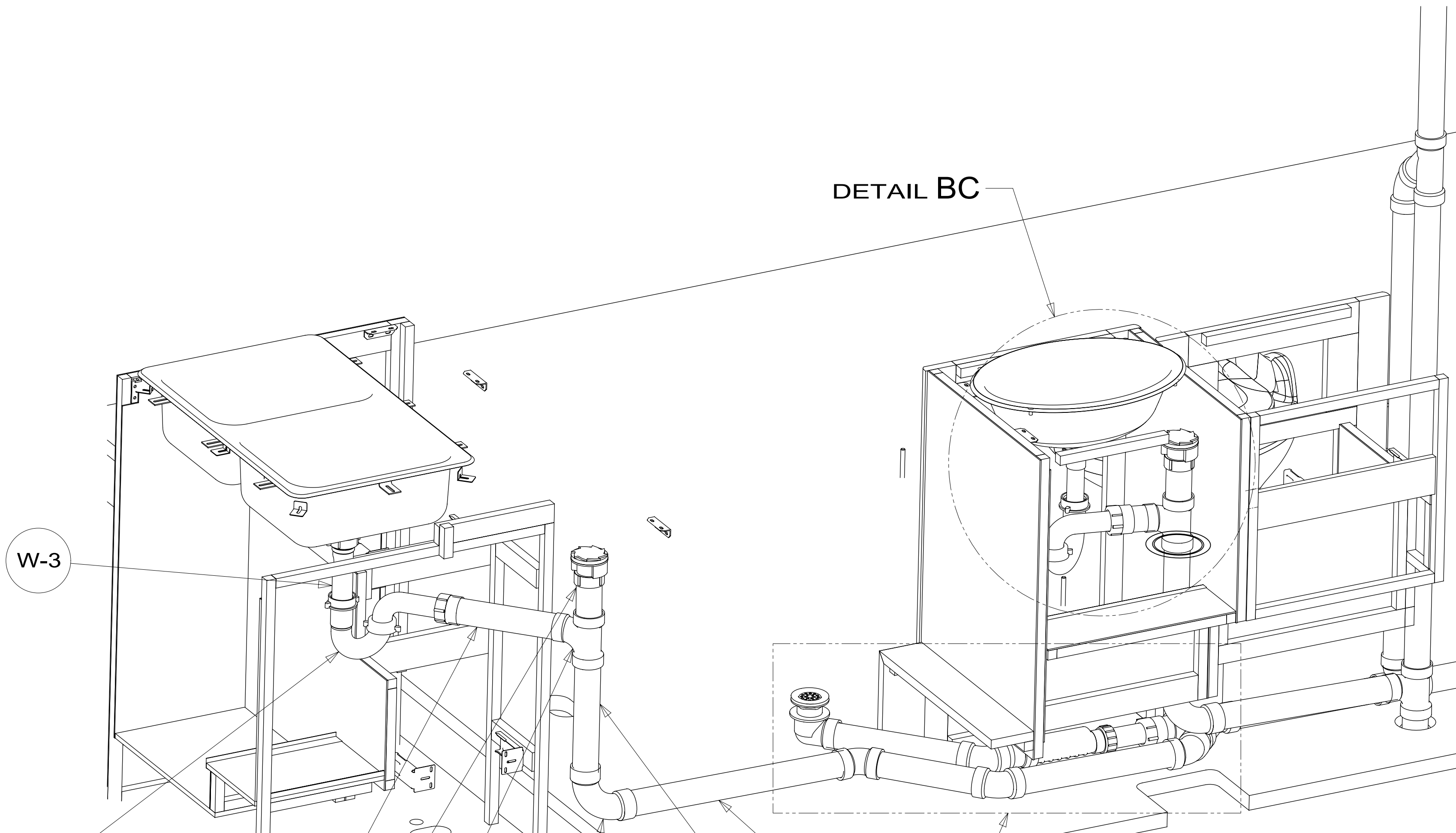
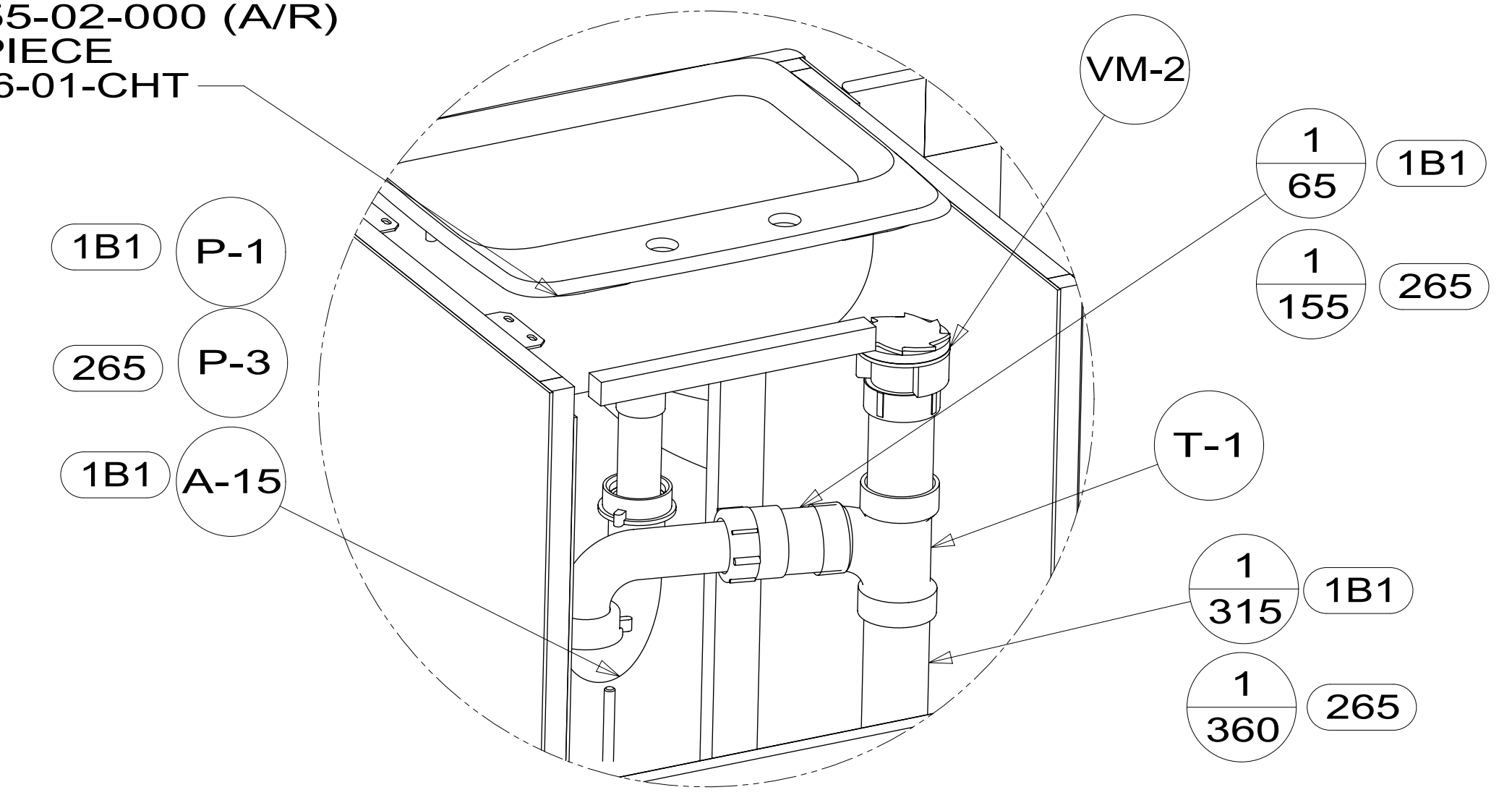
WINNEBAGO
COPYRIGHT 2018 WINNEBAGO INDUSTRIES, INC.

UNSPECIFIED TOLERANCES:		MATERIAL:	
WHOLE DIM (X)	3		
ONE-PLACE (X.X)	1.5		
TWO-PLACE (X.XX)	0.50		
ANGLE	1°		
REFER TO ES0018 FOR FASTENER TIGHTENING GUIDELINES		WEIGHT: (LBS)	FIRST USED: (REF)
			18 331D
DESCRIPTION:			
DRAINAGE SYSTEM INSTL			
SHEET:	ITEM/PART NO.:	REV:	
1 OF 4	000039306 / 31903301000		

X-X
FOR DRAINAGE CALLOUTS SEE DWG NO. 000211962 / 303370-01-000

8 7 6 5 4 3 2 1

- 09A SINK-LAV
184546-01-CHT
- 093 096927-01-CHT
SEAL
- 091255-02-000 (A/R)
TAIL PIECE
- 09A 106116-01-CHT



DETAIL BC

DETAIL BB

VIEW BA

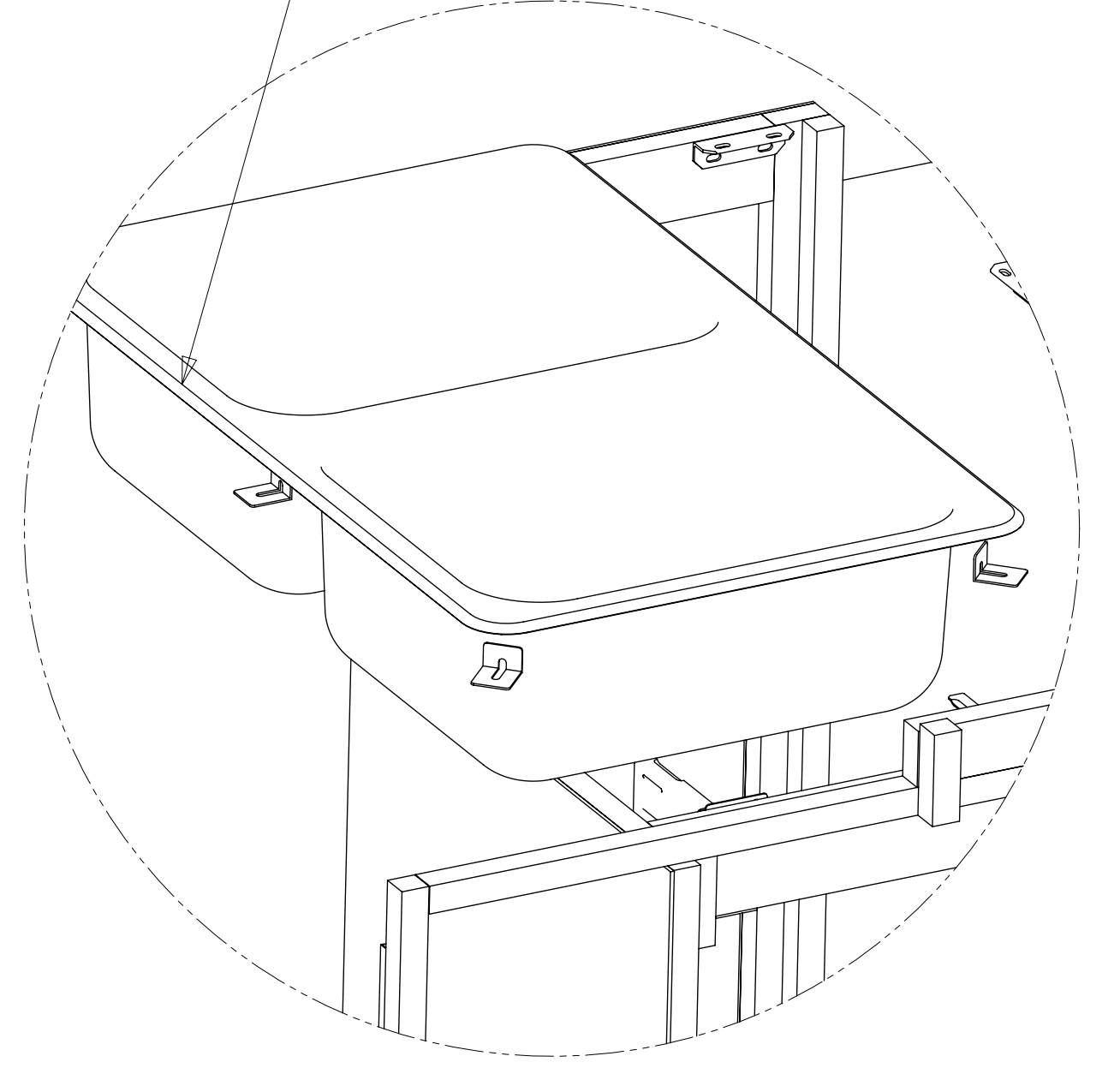
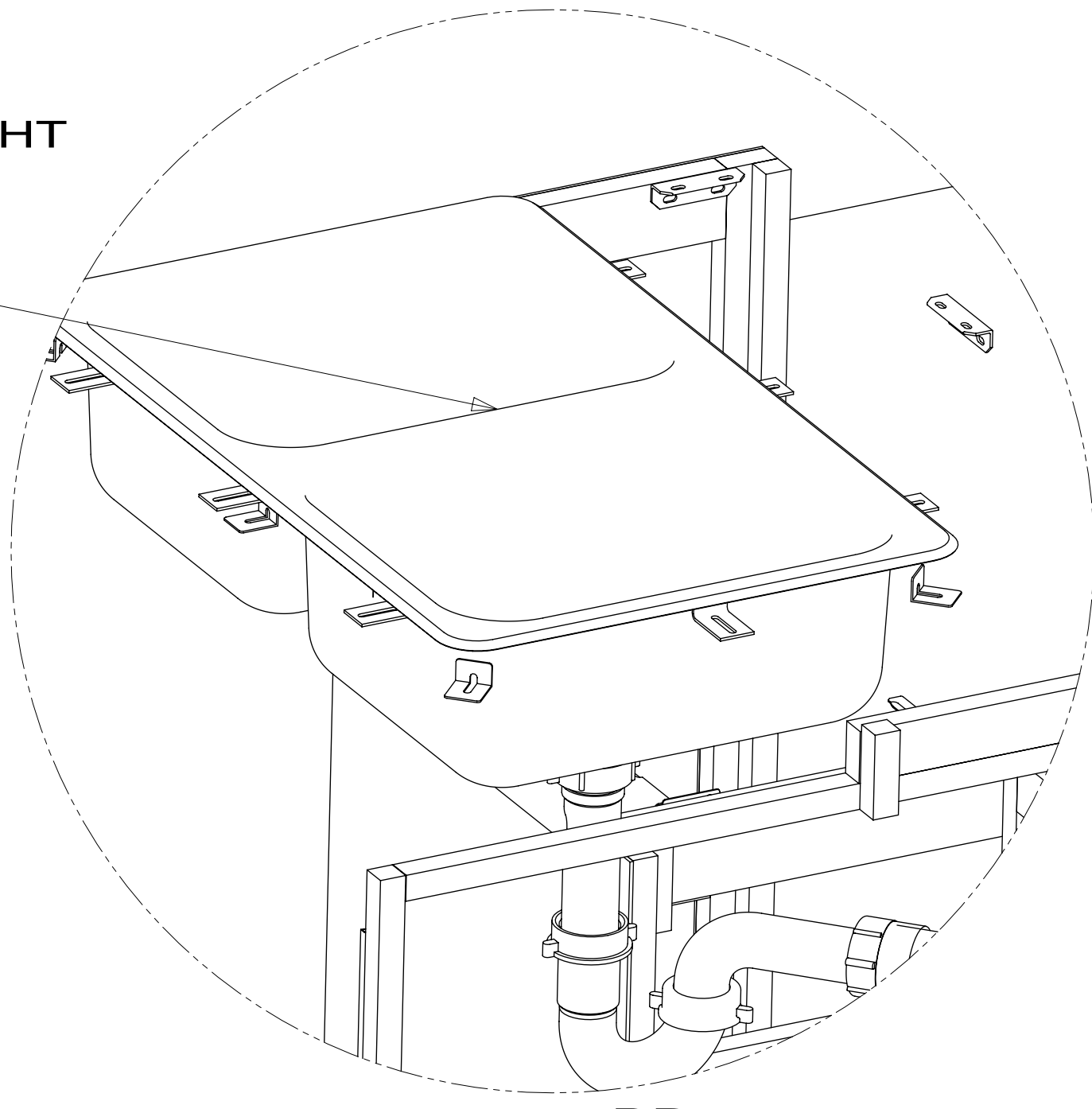
TRAP, WATERLESS
165406-01-000

- 12 SINK
000013705 / 311763-01-CHT
- 4 STRAINER
092303-01-000 (2)
- ANGLE-FORMED
140002-01-CHT (8)

- SHOWER INSTL-ENCLOSURE
000037283 / 318496-01-000
- STRAINER
066440-01-000
- SEALER
069640-01-000
- WASHER-RUBBER
000156082 / 326591-01-CHT

ELBOW-DRAIN
131486-01-000

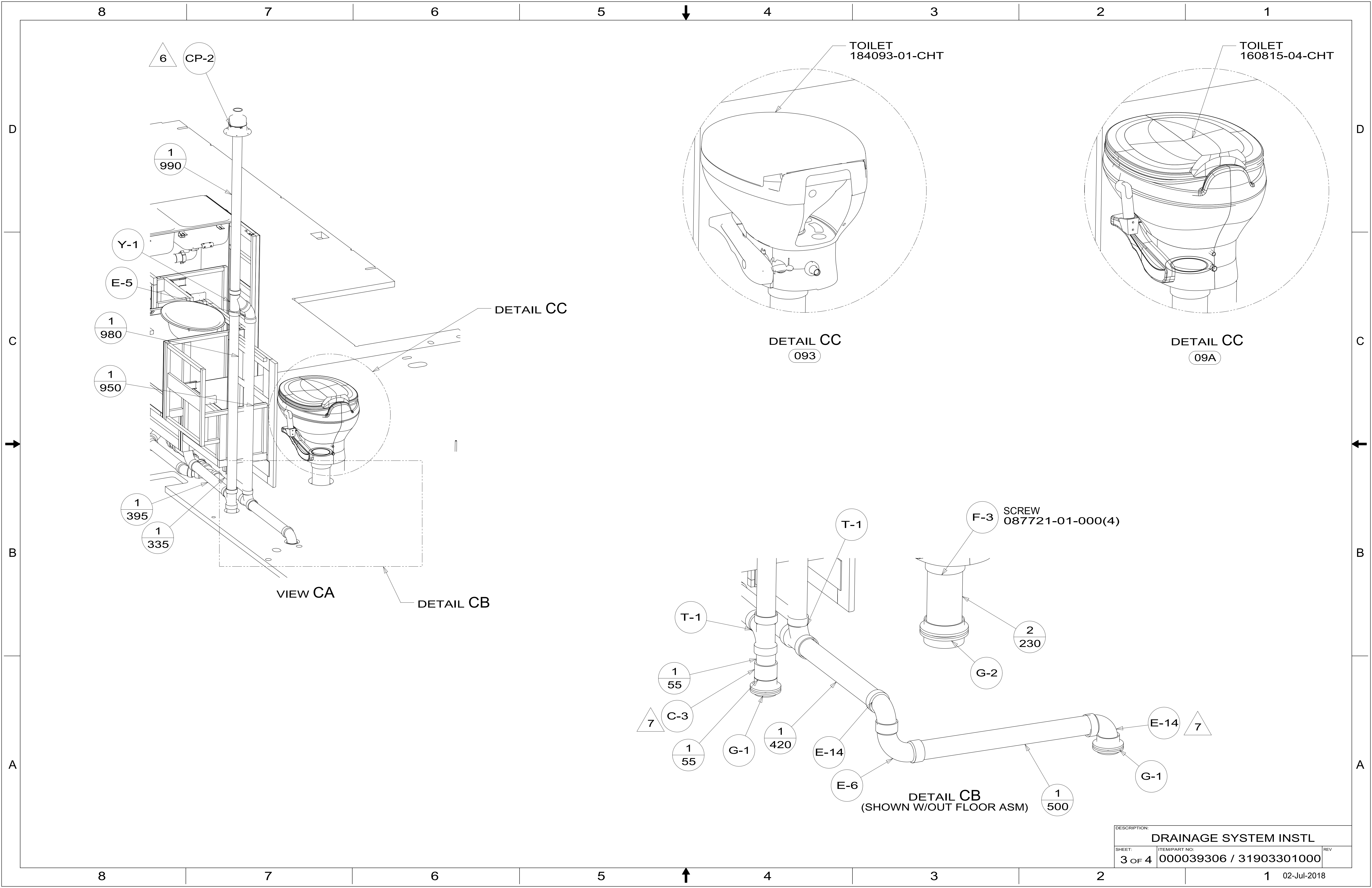
DETAIL BB
(SHOWN W/OUT CABINETS)



- SINK
000013705 / 311763-01-CHT
- STRAINER
092303-01-000 (2) 4
- SEAL
091255-03-000
(2130)

DESCRIPTION: DRAINAGE SYSTEM INSTL		
SHEET: 2 OF 4	ITEM/PART NO: 000039306 / 31903301000	REV

8 7 6 5 4 3 2 1 02-Jul-2018



6 CP-2

1 990

Y-1

E-5

1 980

1 950

1 395

1 335

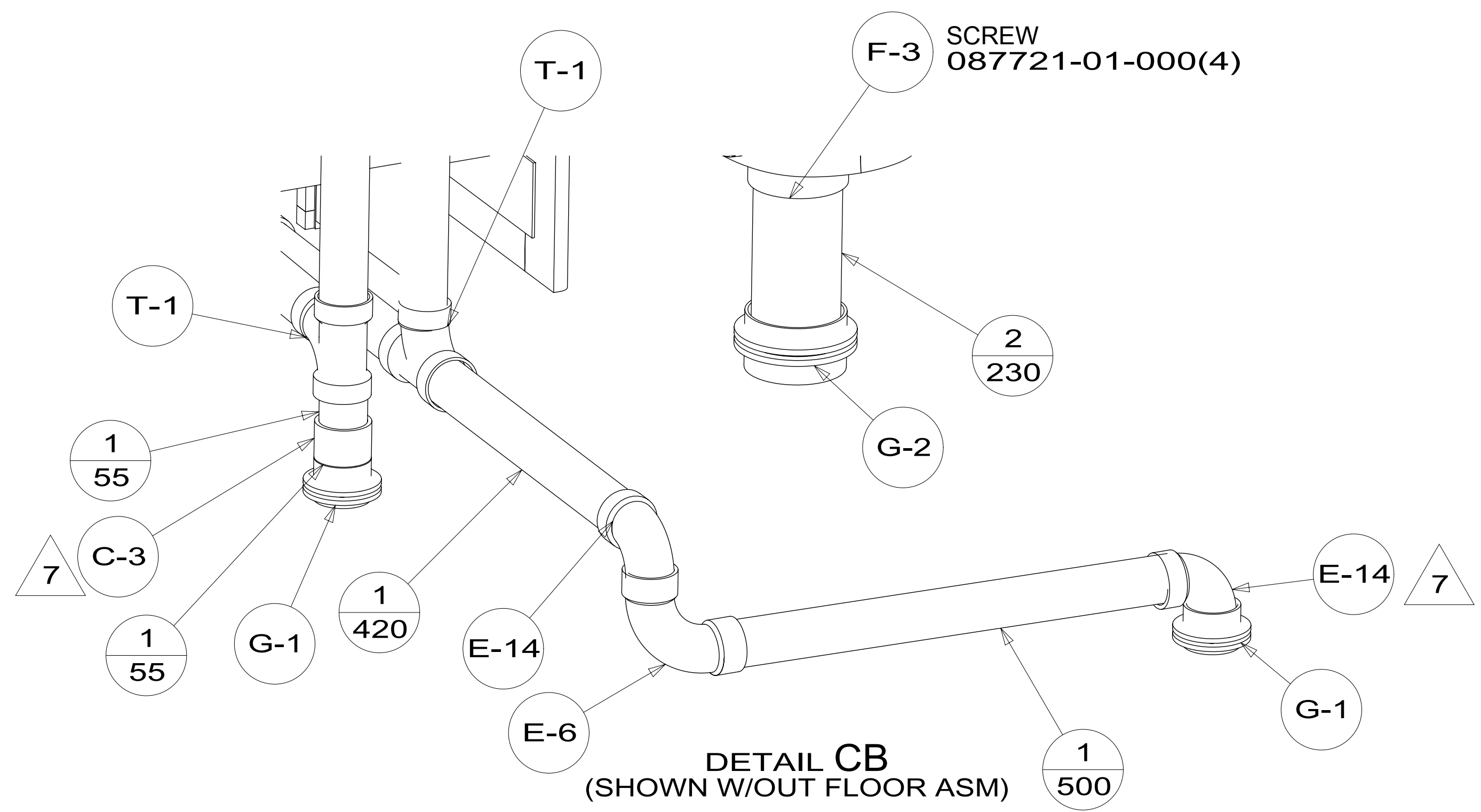
DETAIL CC

DETAIL CC
093

DETAIL CC
09A

VIEW CA

DETAIL CB



DETAIL CB
(SHOWN W/OUT FLOOR ASM)

DESCRIPTION: DRAINAGE SYSTEM INSTL		
SHEET: 3 OF 4	ITEM/PART NO: 000039306 / 31903301000	REV
		02-Jul-2018

8 7 6 5 4 3 2 1

FRONT AXLE
VEHICLE

1222.0

1498.0

DATUM

STRAP-HLDG TANK MTG
153148-13-CHT
NUT
000D39-05-00U (2)

STRAP-HLDG TANK MTG
153148-12-CHT
NUT
000D39-05-00U (2)

STRAP-HLDG TANK MTG
153148-13-CHT
NUT
000D39-05-00U (2)

STRAP-HLDG TANK MTG
153148-12-CHT
NUT
000D39-05-00U (2)

5417

815

4705

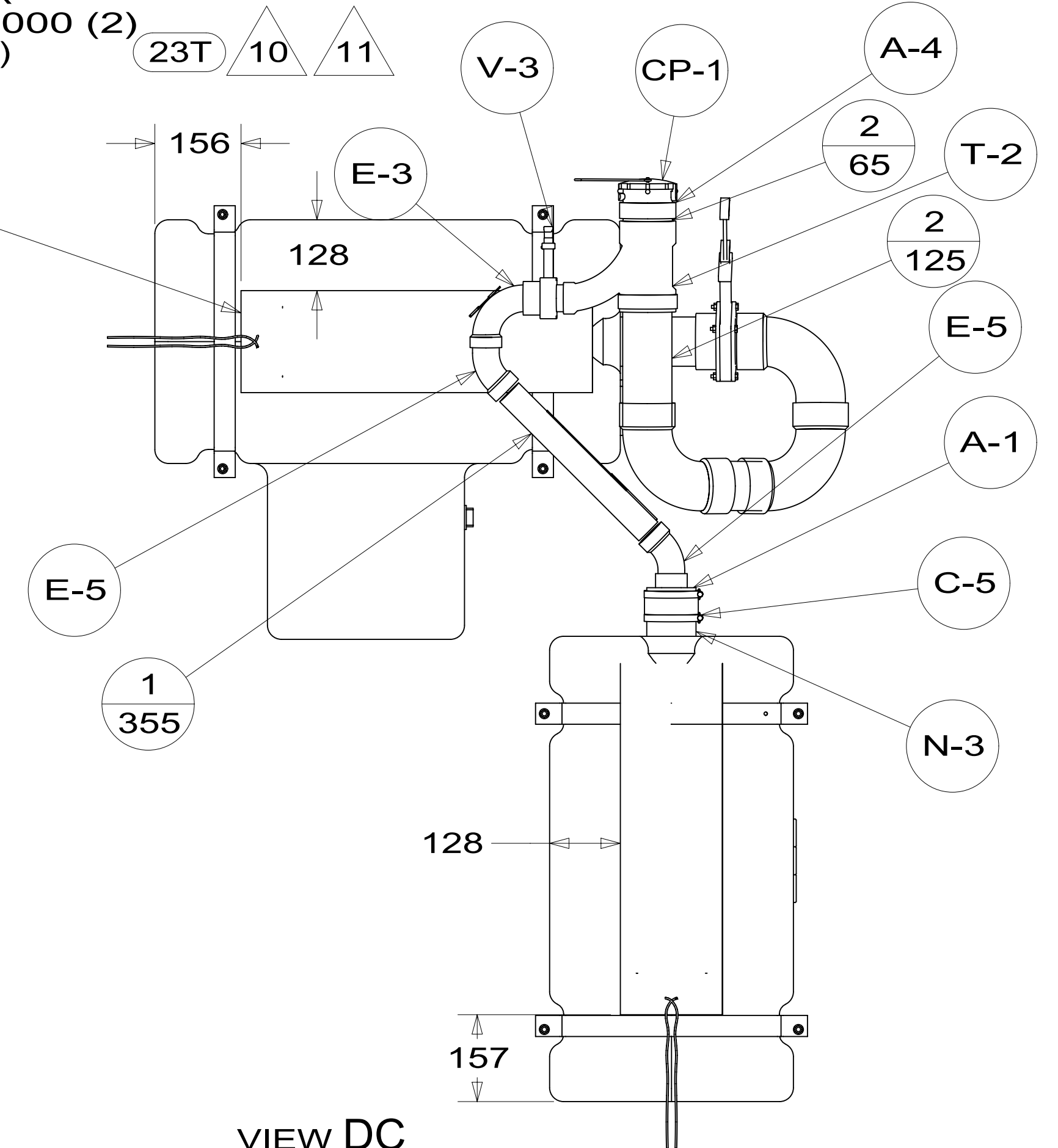
63

VIEW DA

PAD-HEATER, HOLDING TANK
000167187 / 330035-01-000 (2)
(INSTALL PER MFG LABEL)
SEAL
154585-05-CHT
(250)(2)

TANK ASM
000005242 / 312261-01-000

HOLDER-RING
141443-03-CHT
BOLT
000C26-05-16U
NUT
000D39-05-00U



VIEW DC

TANK ASM-HOLDING
000005234 / 312262-01-000

11 10 23T
PAD-HEATER
133972-03-000
(INSTALL PER
MFG LABEL)

11 10 23T
PAD-HEATER
133972-03-000
(INSTALL PER
MFG LABEL)

VIEW DB

2
110

DESCRIPTION: DRAINAGE SYSTEM INSTL		
SHEET: 4 OF 4	ITEM/PART NO: 000039306 / 31903301000	REV

8 7 6 5 4 3 2 1 02-Jul-2018