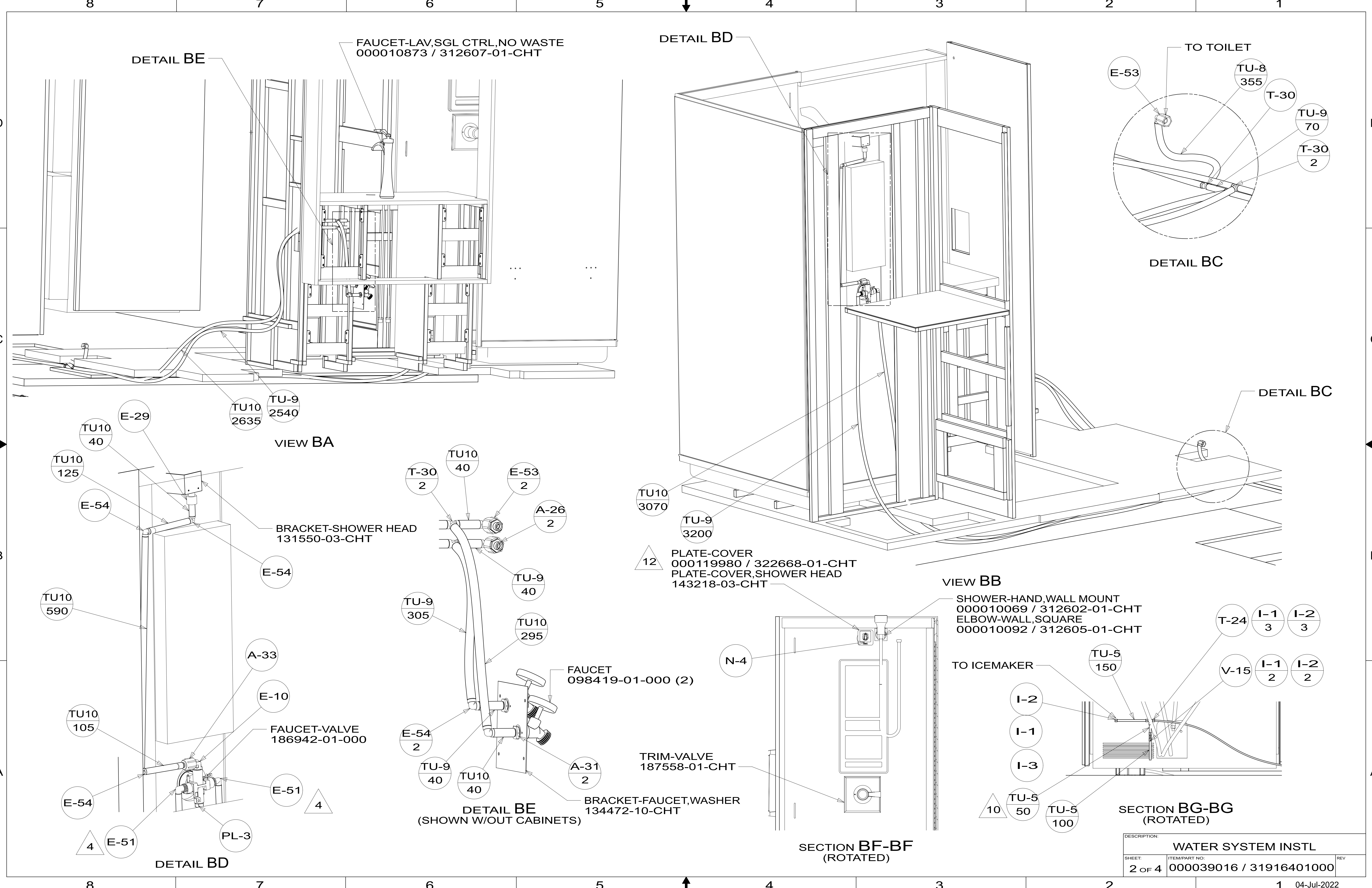


WATER TANK INSTL-REF
(SEE FRAME ASM-CHASSIS)

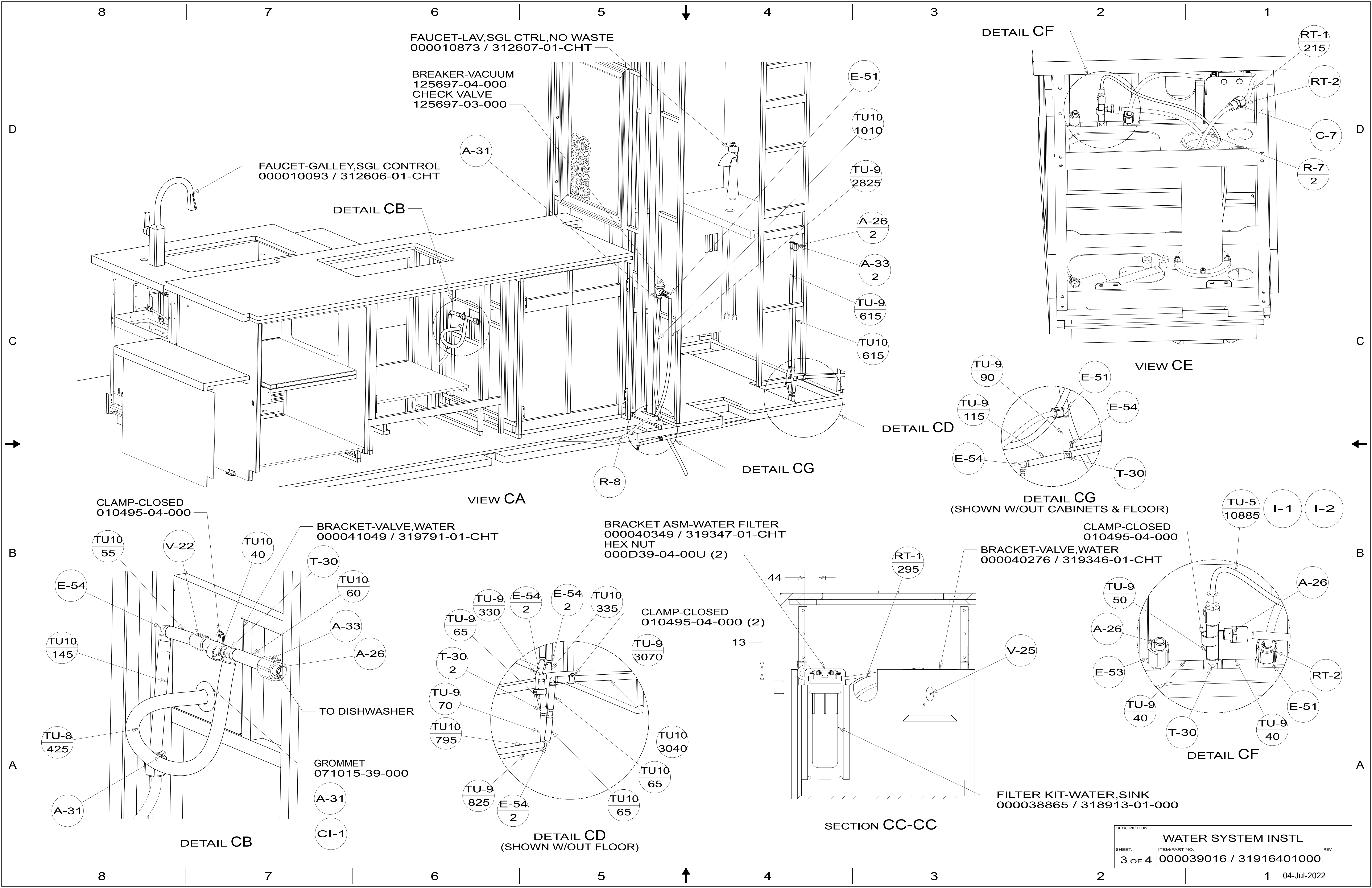
- NOTES:
1. PLASTIC FITTINGS TO BE SEALED WITH SEALANT 084456-01-000.
 2. TUBING TO BE INSTALLED WITH SUFFICIENT SLOPE TO PROVIDE DRAINAGE TO NEAREST VALVE.
 3. ALL TUBING TO BE SECURED AT 1200 INTERVALS MAXIMUM WITH CLAMP 010495-01-000 AND SCREW 000G67-10-12U OR EQUIVALENT.
 4. ADD TEFLON TAPE 010405-02-000.
 5. ADD PIPE WRAP (LADDER SCRAP 110157-02-000) INSULATION.
 6. LABEL HOT AND COLD SUPPLY TUBES AND TAPE FITTING TO TUBE BEFORE CABINET SET TO PREVENT MOVEMENT.
 7. ALL CRIMP FITTINGS TO PEX TUBING REQUIRE 5/8" CLAMP 000156248 / 326669-01-000.
 8. ALL CRIMP FITTINGS TO PEX TUBING REQUIRE 1/2" CLAMP 000156249 / 326670-01-000.
 9. FLUSHING SYSTEM REQUIRES 125697-06-000 INSTRUCTION SHEET.
 10. VALVE MUST REMAIN OPEN AFTER WATER TEST.
 11. REQUIRES 5 GALLONS OF 182955-01-000 ANTIFREEZE FOR WINTERIZATION.
 12. FOR INSTALLATION USE SILICON-ADHESIVE 131264-05-CHT. APPLY ON TOP OF PLATE, PLACE COVER ON, AND PUT ADHESIVE AROUND COVER.

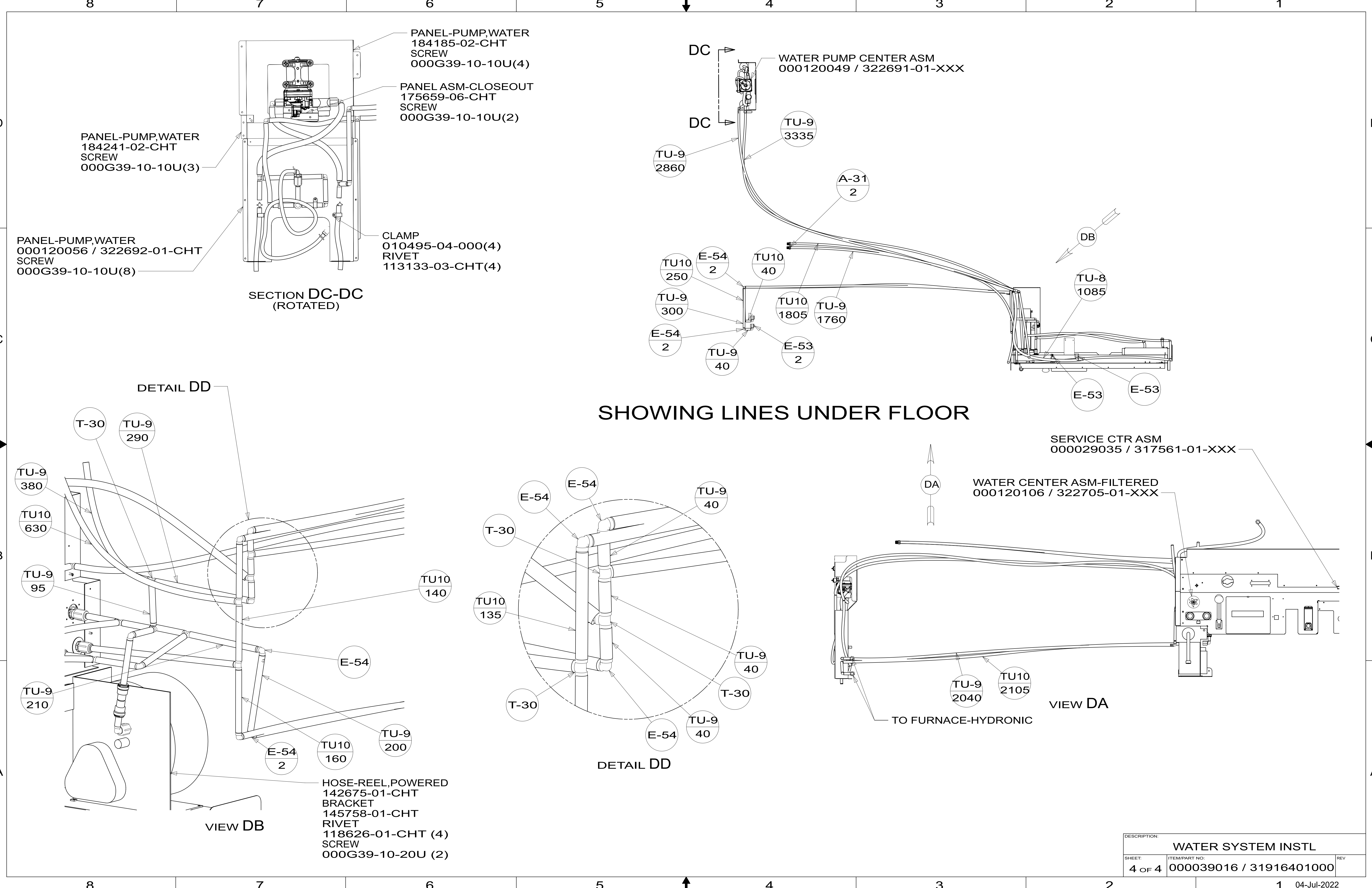
X-X
FOR WATER CALLOUTS SEE DWG NO. 000209446 / 303369-01-000

WINNEBAGO [®]		COPYRIGHT 2022 WINNEBAGO INDUSTRIES, INC.	
DSNR:		ALL DIMENSIONS ARE IN MILLIMETERS	
DFTR:			
UNSPECIFIED TOLERANCES:		MATERIAL:	
WHOLE DIM (X)	3		
ONE-PLACE (X.X)	1.5		
TWO-PLACE (X.XX)	0.50		
ANGLE	1°		
REFER TO ES0018 FOR FASTENER TIGHTENING GUIDELINES		WEIGHT: (LBS)	FIRST USED: (REF)
			18 R45DL
DESCRIPTION: WATER SYSTEM INSTL			
SHEET:	ITEM/PART NO.:	REV:	
1 OF 4	000039016 / 31916401000		
REF:		1 04-Jul-2022	



DESCRIPTION:		
WATER SYSTEM INSTL		
SHEET:	ITEM/PART NO.:	REV
2 OF 4	000039016 / 31916401000	





PANEL-PUMP,WATER
184241-02-CHT
SCREW
000G39-10-10U(3)

PANEL-PUMP,WATER
000120056 / 322692-01-CHT
SCREW
000G39-10-10U(8)

PANEL-PUMP,WATER
184185-02-CHT
SCREW
000G39-10-10U(4)

PANEL ASM-CLOSEOUT
175659-06-CHT
SCREW
000G39-10-10U(2)

CLAMP
010495-04-000(4)
RIVET
113133-03-CHT(4)

SECTION DC-DC
(ROTATED)

DETAIL DD

VIEW DB

HOSE-REEL,POWERED
142675-01-CHT
BRACKET
145758-01-CHT
RIVET
118626-01-CHT (4)
SCREW
000G39-10-20U (2)

WATER PUMP CENTER ASM
000120049 / 322691-01-XXX

TU-9
2860

TU-9
3335

A-31
2

TU10
250

E-54
2

TU10
40

TU-9
300

TU10
1805

TU-9
1760

E-54
2

TU-9
40

E-53
2

DB

TU-8
1085

E-53

E-53

SHOWING LINES UNDER FLOOR

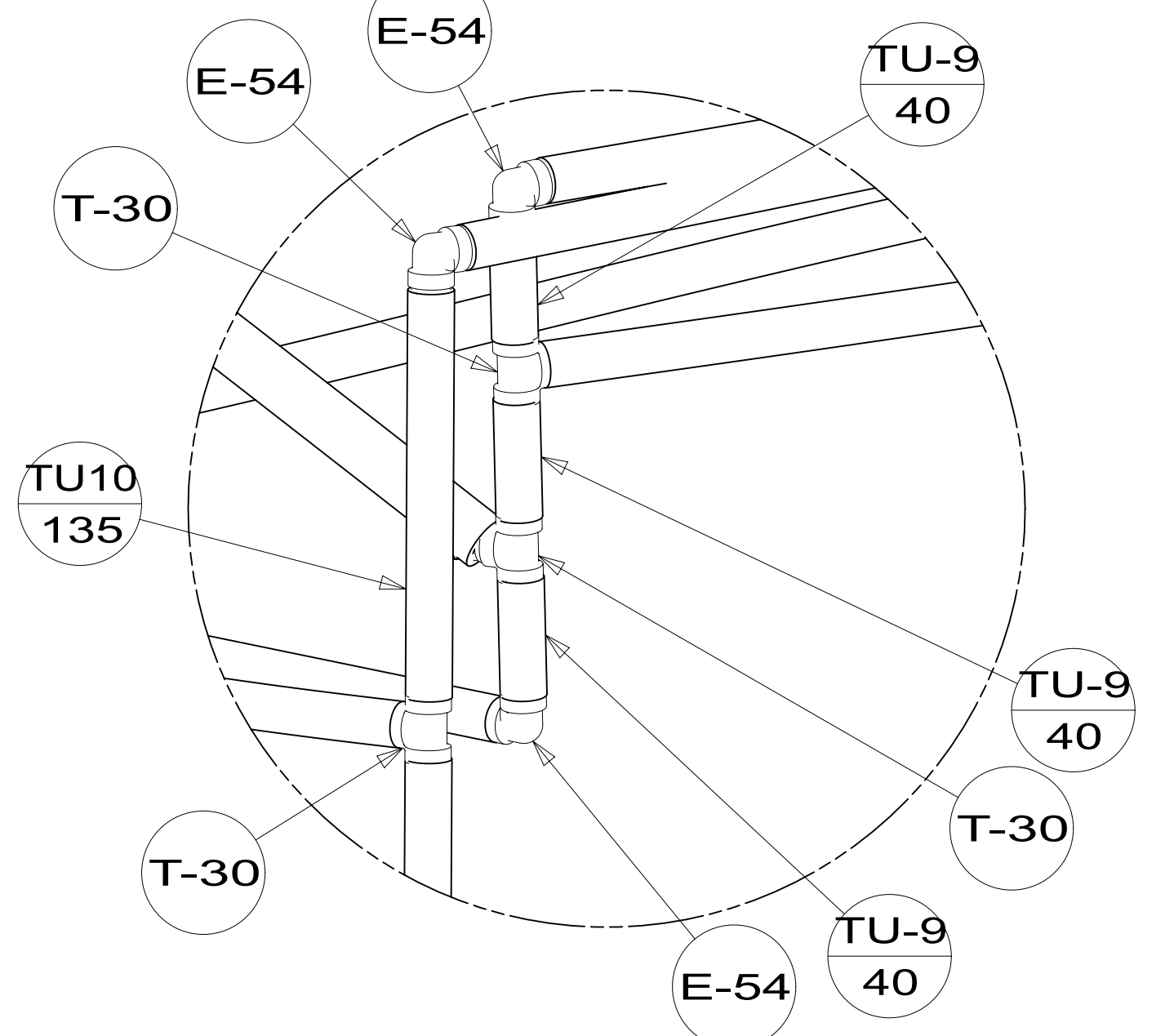
SERVICE CTR ASM
000029035 / 317561-01-XXX

WATER CENTER ASM-FILTERED
000120106 / 322705-01-XXX

DA

VIEW DA

TO FURNACE-HYDRONIC



DETAIL DD

DESCRIPTION:		
WATER SYSTEM INSTL		
SHEET:	ITEM/PART NO:	REV
4 OF 4	000039016 / 31916401000	