

BRACKET-TV SWING MOUNT  
179241-03-CHT  
SCREW  
000G39-10-12U (8)  
PLATE-MNTNG-TV-32" INSIGNIA  
000127966 / 325048-01-CHT

CONDUIT-CONVOLUTE  
041953-03-000 (1100 MM)

TIE-WIRE  
008343-04-000 (2)

CLAMP  
010497-03-000 (4)

110V RCP  
(REF) 2

ANTENNA  
POWER BOOST  
(REF) 1

DVD PLAYER W/HDMI OUT  
186774-01-000  
BRACKET-DVD PLAYER  
184814-03-CHT  
SCREW  
000G67-10-12U (6)  
FASTENER-DUAL LOCK  
085774-01-000 (130 MM)  
085774-02-000 (130 MM)

TV-32" HDTV  
000125949 / 324307-01-000  
SCREW  
0MG02U-04-012 (4)  
WASHER  
0ME02U-04-071 (4)  
TAPE-FOAM,DBL  
076322-22-000 (80 MM) (2)  
TAPE-FOAM,DBL  
076322-23-000 (150 MM) 4

BRACKET-TV SWING MOUNT  
(REF)

VIEW AB  
(TV NOT SHOWN)

FASTENER-DUAL LOCK  
(REF) 3

VIEW AA

- NOTES:
- 4 PREP BOTH SURFACES WITH ADHESIVE-PROMOTER 087211-01-000.
  - 3 ATTACH FASTENER-DUAL LOCK TO DVD PLAYER POSITIONED AS SHOWN.
  - 2 SEE WIRING INSTL-BODY, 110V FOR ADDITIONAL INFORMATION.
  - 1 SEE WIRING INSTL-BODY, 12V FOR ADDITIONAL INFORMATION.

- 68R TV - FRONT
- 265 CODES/STANDARDS-CSA/CMVSS
- 1B1 CODES/STANDARDS USA

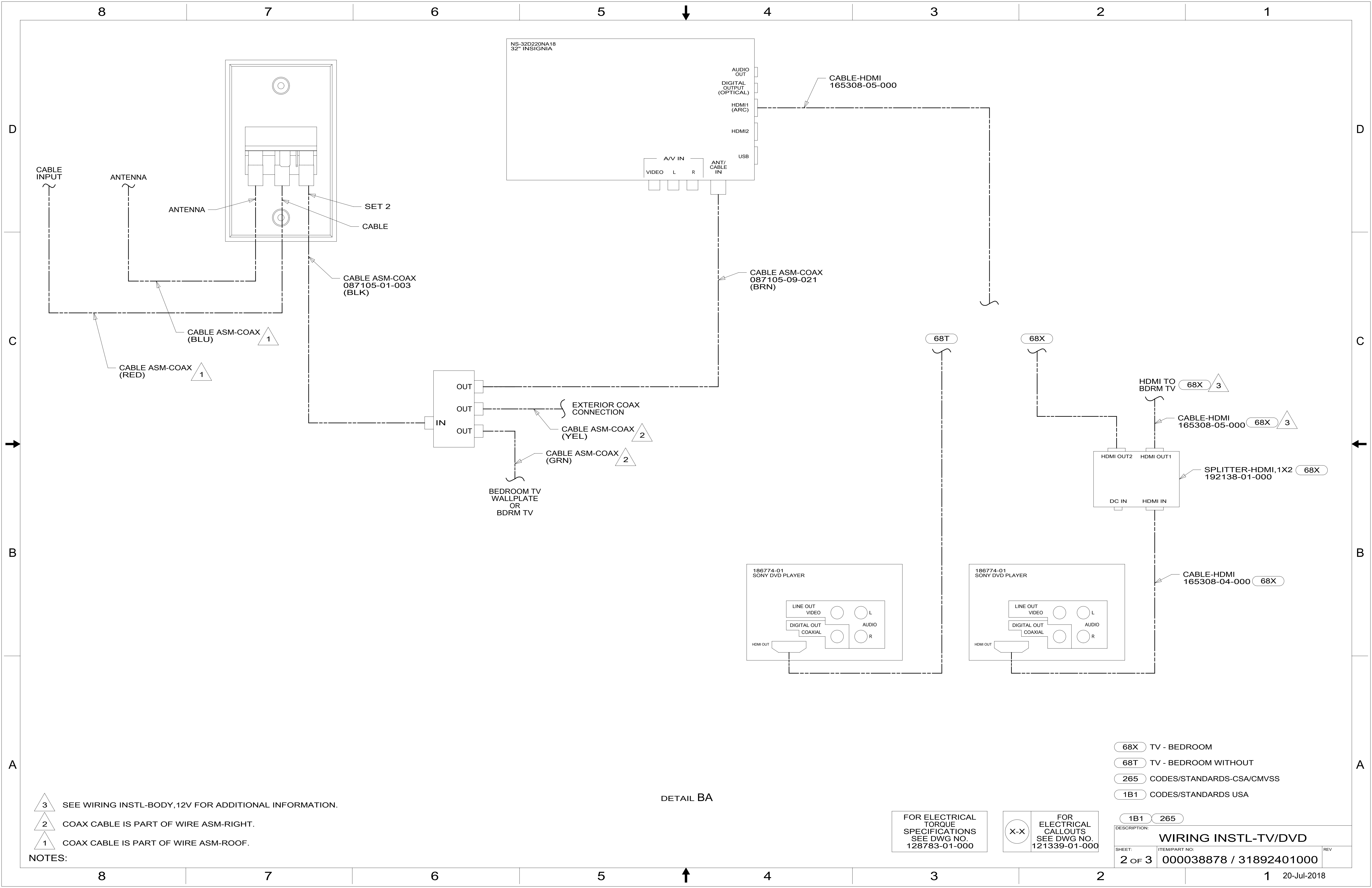
1B1 265 68R

**WINNEBAGO**  
COPYRIGHT 2016 WINNEBAGO INDUSTRIES, INC.

DSNR:	ALL DIMENSIONS ARE IN MILLIMETERS	
DFFR:		
UNSPECIFIED TOLERANCES:	MATERIAL:	
WHOLE DIM (X) : 3		
ONE-PLACE (X.X) : 1.5		
TWO-PLACE (X.XX) : 0.50		
ANGLE : 1°		
REFER TO ES0018 FOR FASTENER TIGHTENING GUIDELINES	WEIGHT: (LBS)	FIRST USED: <b>18 322R</b>
DESCRIPTION:	<b>WIRING INSTL-TV/DVD</b>	
SHEET: 1 OF 3	ITEM/PART NO: 000038878 / 31892401000	REV:

FOR ELECTRICAL TORQUE SPECIFICATIONS SEE DWG NO. 128783-01-000

FOR ELECTRICAL CALLOUTS SEE DWG NO. 121339-01-000



- NOTES:
- 3 SEE WIRING INSTL-BODY, 12V FOR ADDITIONAL INFORMATION.
  - 2 COAX CABLE IS PART OF WIRE ASM-RIGHT.
  - 1 COAX CABLE IS PART OF WIRE ASM-ROOF.

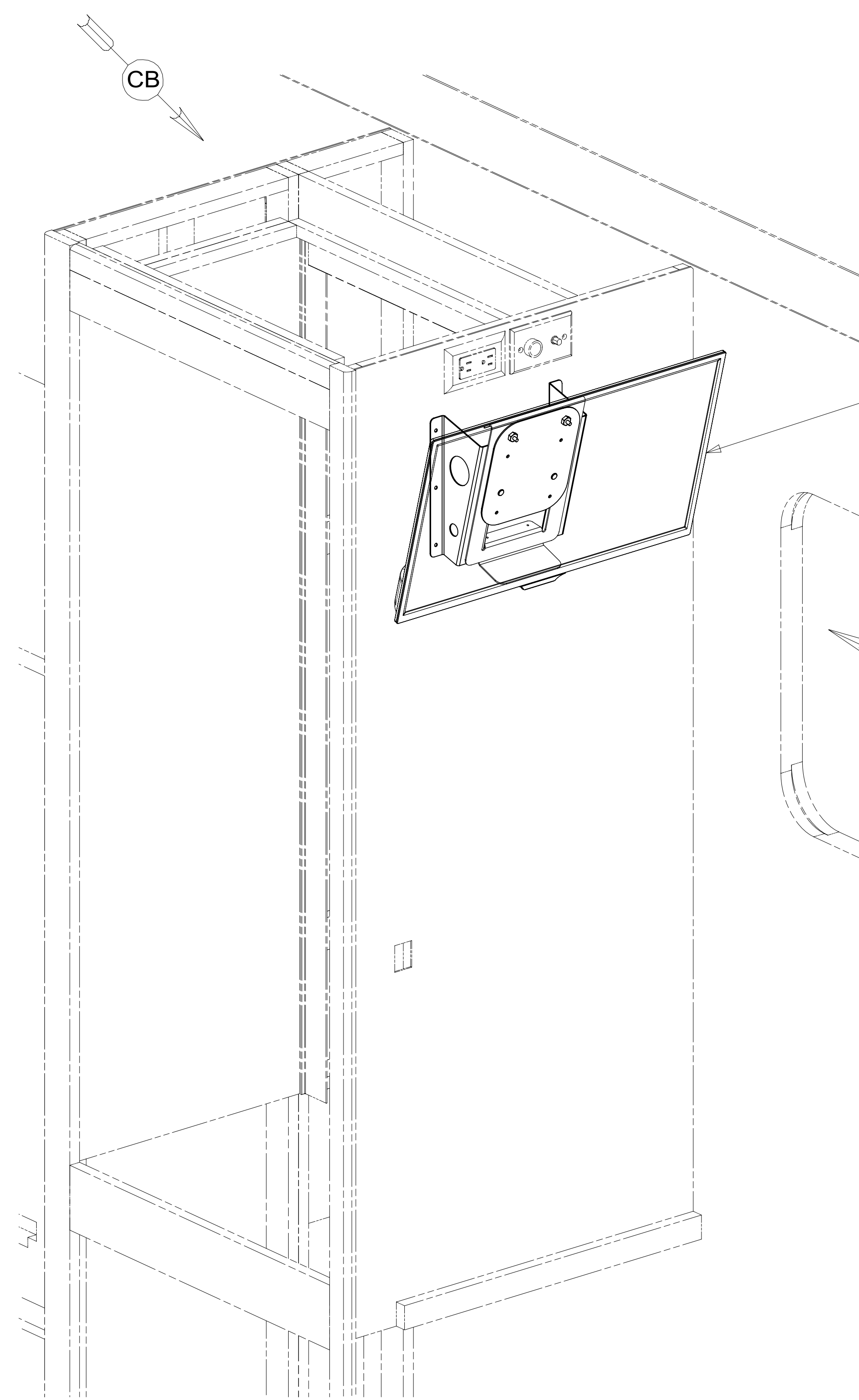
DETAIL BA

FOR ELECTRICAL TORQUE SPECIFICATIONS SEE DWG NO. 128783-01-000

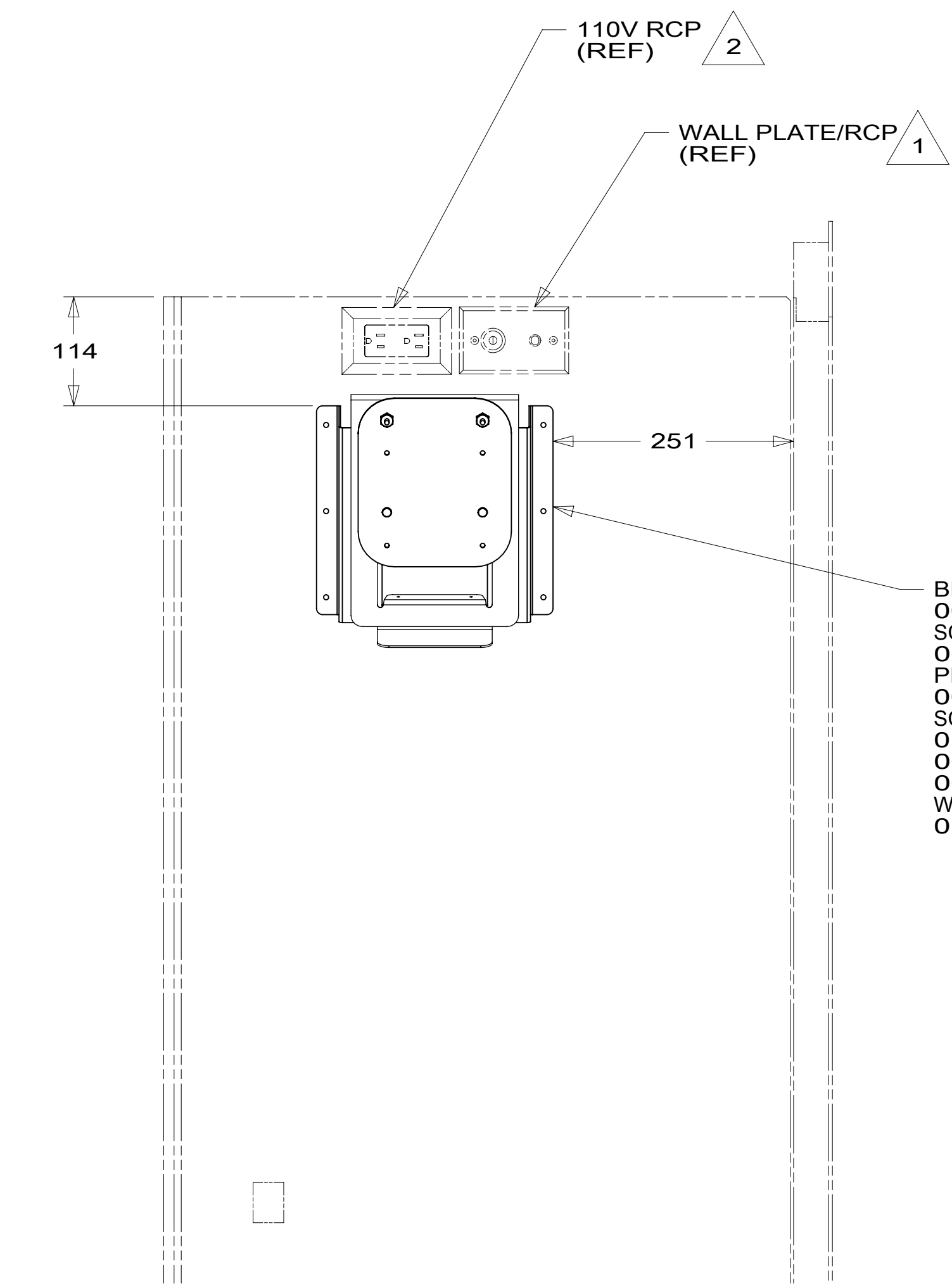
FOR ELECTRICAL CALLOUTS SEE DWG NO. 121339-01-000

- 68X TV - BEDROOM
- 68T TV - BEDROOM WITHOUT
- 265 CODES/STANDARDS-CSA/CMVSS
- 1B1 CODES/STANDARDS USA

DESCRIPTION:		1B1 265	
<b>WIRING INSTL-TV/DVD</b>			
SHEET:	ITEM/PART NO:	REV	
2 OF 3	000038878 / 31892401000		

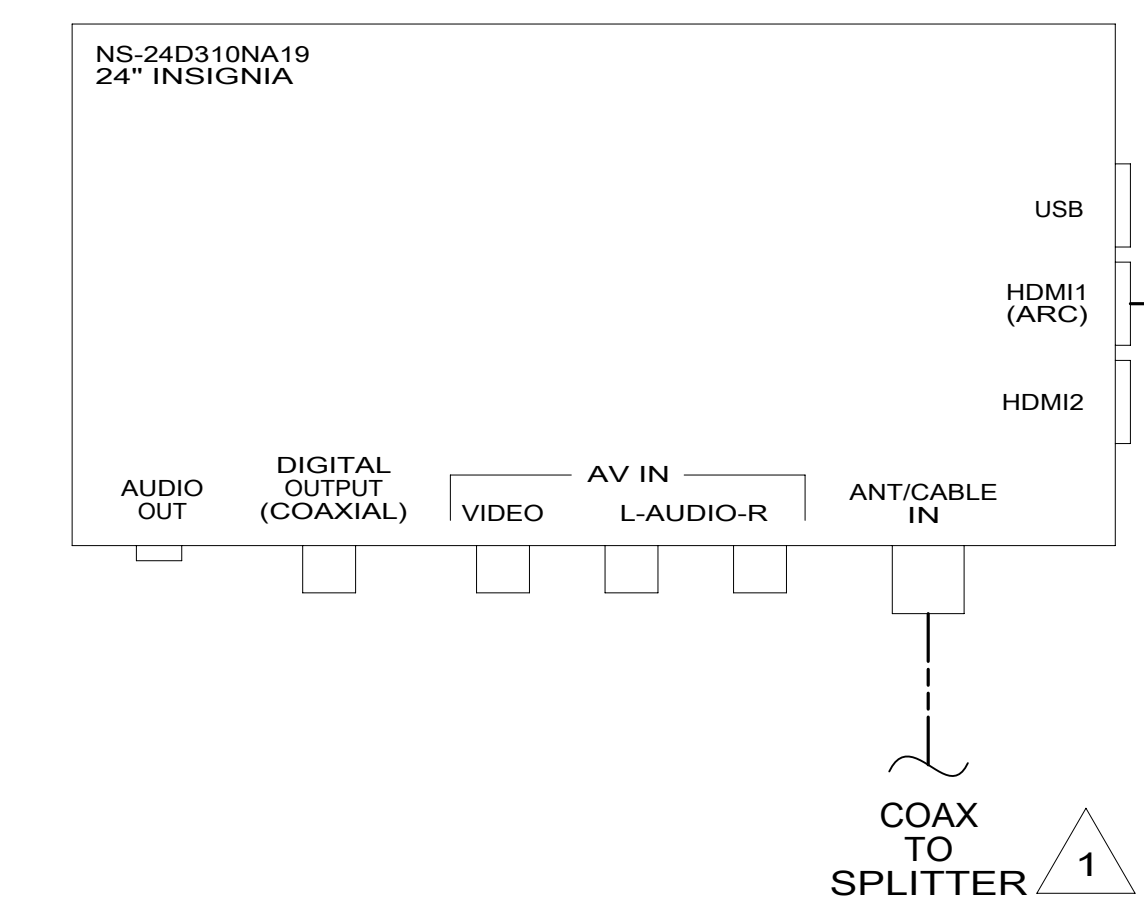


TV-24" HDTV, INSIGNIA  
 000167921 / 330227-01-000  
 PLATE ASM  
 000168018 / 330250-01-CHT  
 NUT  
 000D65-08-00U (2)  
 SCREW  
 000G19-10-10U (2)



BRACKET-TV  
 000033447 / 317570-01-CHT  
 SCREW  
 000G39-10-12U (6)  
 PLATE-MOUNTING  
 000032972 / 317364-01-CHT  
 SCREW  
 0MG02U-04-012 (4)  
 000G39-10-12U (2)  
 000G11-08-20U (2)  
 WASHER  
 0ME02U-04-071 (4)

VIEW CA  
 (TV NOT SHOWN)



HDMI CABLE  
 TO  
 SPLITTER 1

COAX  
 TO  
 SPLITTER 1

VIEW CB

2 SEE WIRING INSTL-BODY, 110V FOR ADDITIONAL INFORMATION.  
 1 SEE WIRING INSTL-BODY, 12V FOR ADDITIONAL INFORMATION.

NOTES:

FOR ELECTRICAL  
 TORQUE  
 SPECIFICATIONS  
 SEE DWG NO.  
 128783-01-000

FOR ELECTRICAL  
 CALLOUTS  
 SEE DWG NO.  
 121339-01-000

- 68X TV - BEDROOM
- 265 CODES/STANDARDS-CSA/CMVSS
- 1B1 CODES/STANDARDS USA

DESCRIPTION: <b>WIRING INSTL-TV/DVD</b>		
SHEET: <b>3 OF 3</b>	ITEM/PART NO: <b>000038878 / 31892401000</b>	REV