

BRACKET-TV,32" INSIGNIA
000034781 / 317873-01-CHT
SCREW
000G39-10-16U (6)
SCREW
000G39-10-08U (2)

DVD PLAYER W/HDMI OUT
186774-01-000
BRACKET-DVD PLAYER
000014939 / 312122-01-CHT
SCREW
00067-10-12U (6)
FASTENER-DUAL LOCK
085774-01-000 (130 MM)
085774-02-000 (130 MM)

PLATE-MNTNG,TV,32" INSIGNIA
000034780 / 317872-01-CHT
SCREW
OMG02U-04-012 (4)
WASHER
OME02U-04-071 (4)
TAPE-FOAM
076322-22-000 (2 X 80 MM)
TAPE-FOAM
076322-23-000 (150 MM)

SCREW-PAN,HEAD
000G39-10-08U (2)

TV-32" HDTV
000031285 / 316939-01-000

SLIDEOUT ROOF

FASTENER-DUAL LOCK
(REF)

169 (2)
(REF)

VIEW AA
(TV NOT SHOWN)

VIEW AB

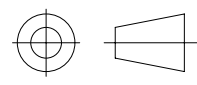
- NOTES:
- 3 PREP BOTH SURFACES WITH ADHESIVE-PROMOTER, 087211-01-000.
 - 2 ATTACH FASTENER-DUAL LOCK TO DVD PLAYER POSITIONED AS SHOWN.
 - 1 MOUNT TV BRACKET CENTERED BETWEEN CABINETS.

- 68Y TV - MAIN
- 265 CODES/STANDARDS-CSA/CMVSS
- 1B1 CODES/STANDARDS USA

1B1 265 68Y



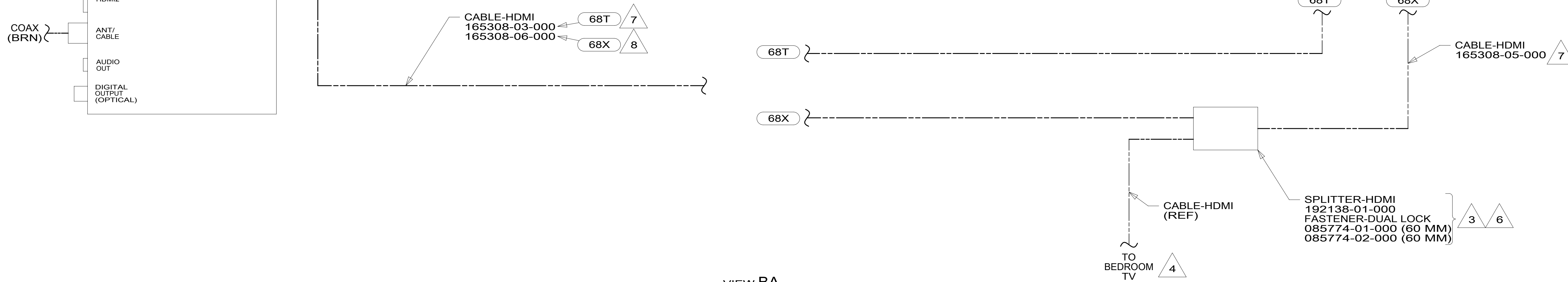
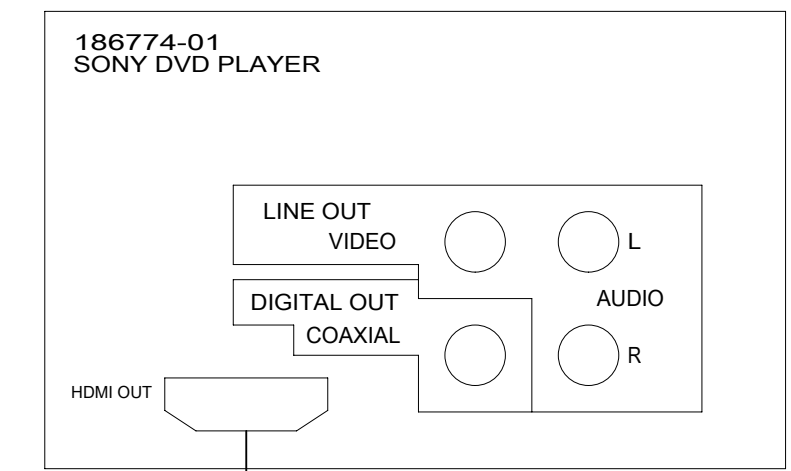
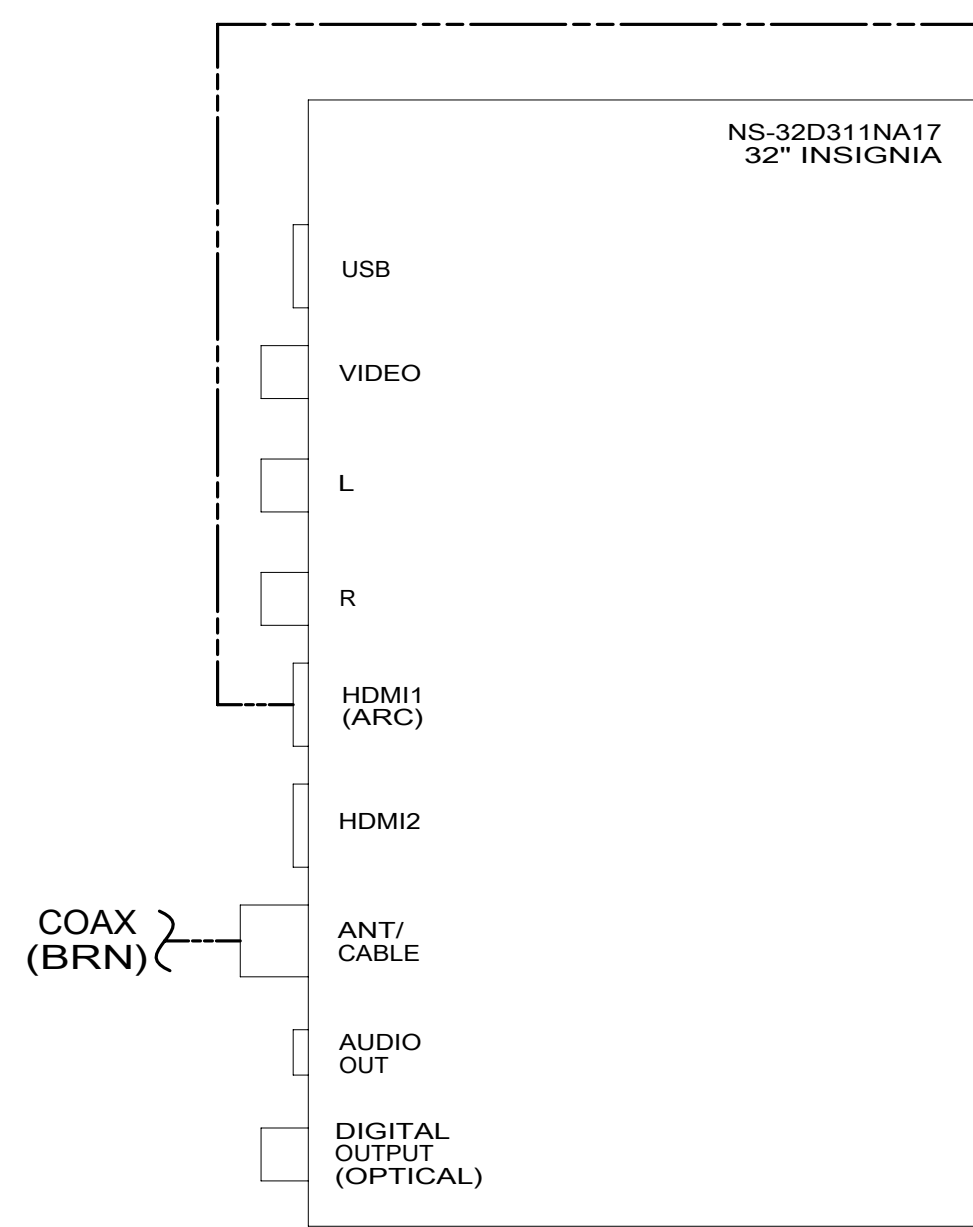
COPYRIGHT 2016 WINNEBAGO INDUSTRIES, INC.

DSNR:		ALL DIMENSIONS ARE IN MILLIMETERS	
DFFR:		MATERIAL:	
UNSPECIFIED TOLERANCES:		WEIGHT: (LBS)	FIRST USED:
WHOLE DIM (X)	: 3		18 331D
ONE-PLACE (X.X)	: 1.5		
TWO-PLACE (X.XX)	: 0.50		
ANGLE	: 1°		

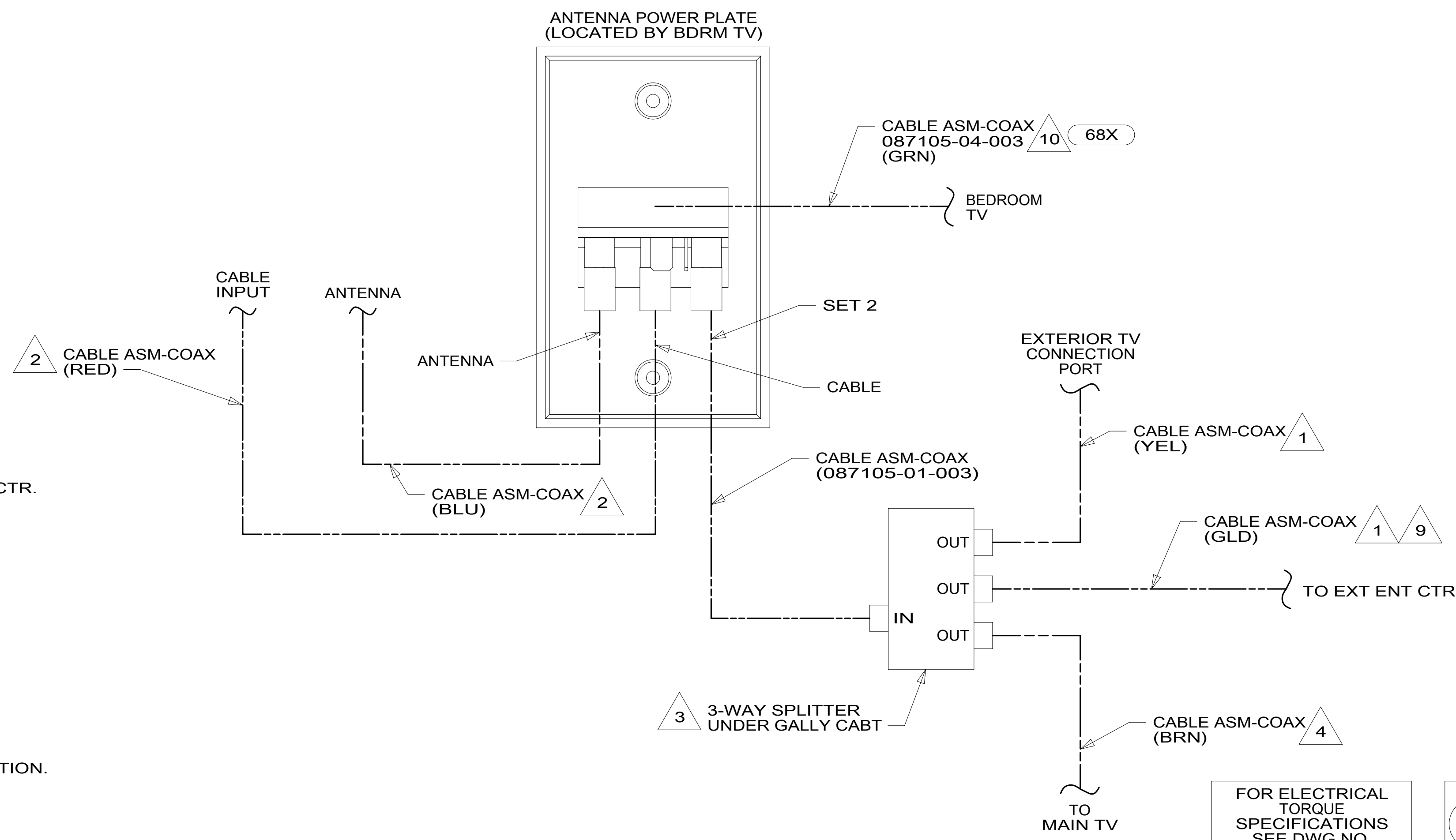
FOR ELECTRICAL TORQUE SPECIFICATIONS SEE DWG NO. 128783-01-000

FOR ELECTRICAL CALLOUTS SEE DWG NO. 121339-01-000

DESCRIPTION:		
WIRING INSTL-TV/DVD		
SHEET:	ITEM/PART NO.:	REV:
1 OF 3	000038212 / 31875401000	
REF:		



VIEW BA



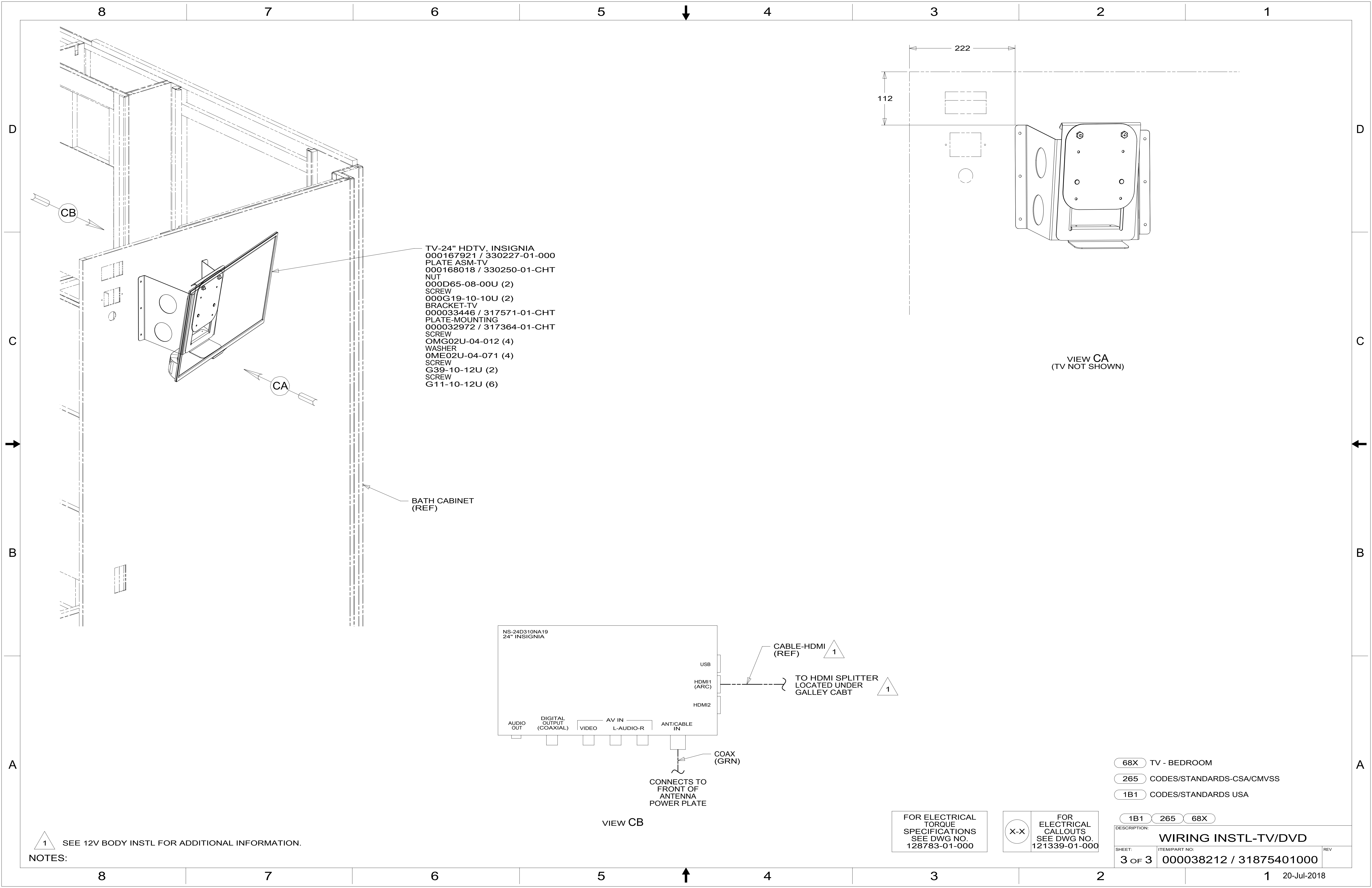
- NOTES:
- 10 CONNECTS TO FRONT OF ANTENNA POWER PLATE.
 - 9 ROUTED VIA WIRE ASM-CHASSIS & CABLE ASM-EXT ENT CTR.
 - 8 CABLE MARKED WITH PUR TAPE AT EACH END.
 - 7 CABLE MARKED WITH BRN TAPE AT EACH END.
 - 6 LOCATED IN DINETTE SEAT.
 - 5 SEE EXTERIOR ENTERTAINMENT CENTER FOR ADDITIONAL INFORMATION.
 - 4 ROUTED VIA WIRE ASM-SLIDEOUT, RIGHT, WIRE ASM-CHASSIS, WIRE ASM-LEFT
 - 3 SEE WIRING INSTL-BODY, 12V FOR ADDITIONAL INFORMATION.
 - 2 COAX CABLE IS PART OF WIRE ASM-LEFT.
 - 1 COAX CABLE IS PART OF WIRE ASM-CHASSIS.

- 68X TV - BEDROOM
- 68T TV - BEDROOM WITHOUT
- 265 CODES/STANDARDS-CSA/CMVSS
- 1B1 CODES/STANDARDS USA

FOR ELECTRICAL TORQUE SPECIFICATIONS SEE DWG NO. 128783-01-000

FOR ELECTRICAL CALLOUTS SEE DWG NO. 121339-01-000

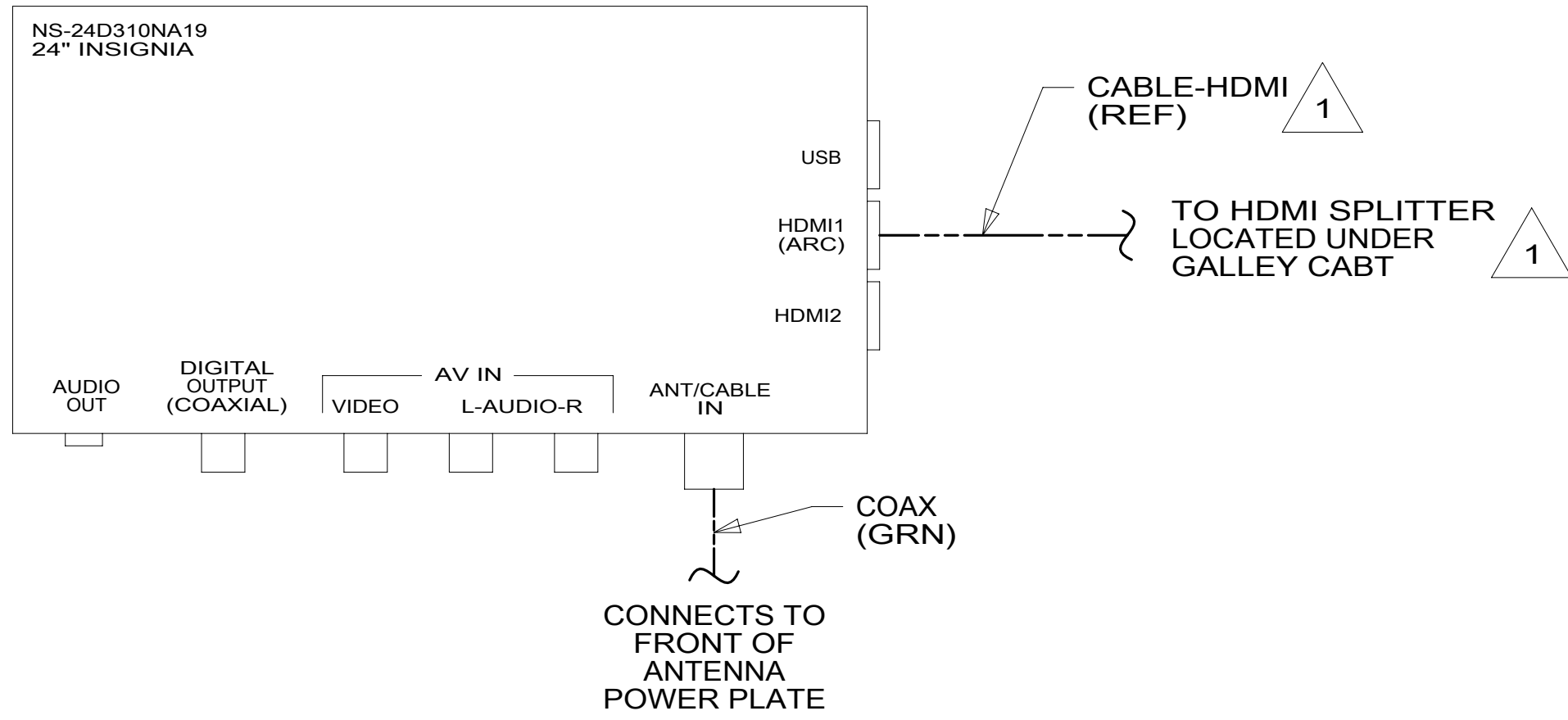
DESCRIPTION:	WIRING INSTL-TV/DVD	
SHEET:	ITEM/PART NO:	REV
2 OF 3	000038212 / 31875401000	



- TV-24" HDTV, INSIGNIA
000167921 / 330227-01-000
- PLATE ASM-TV
000168018 / 330250-01-CHT
- NUT
000D65-08-00U (2)
- SCREW
000G19-10-10U (2)
- BRACKET-TV
000033446 / 317571-01-CHT
- PLATE-MOUNTING
000032972 / 317364-01-CHT
- SCREW
OMG02U-04-012 (4)
- WASHER
OME02U-04-071 (4)
- SCREW
G39-10-12U (2)
- SCREW
G11-10-12U (6)

BATH CABINET
(REF)

VIEW CA
(TV NOT SHOWN)



VIEW CB

NOTES:
1 SEE 12V BODY INSTL FOR ADDITIONAL INFORMATION.

FOR ELECTRICAL
TORQUE
SPECIFICATIONS
SEE DWG NO.
128783-01-000

FOR ELECTRICAL
CALLOUTS
SEE DWG NO.
121339-01-000

- 68X TV - BEDROOM
- 265 CODES/STANDARDS-CSA/CMVSS
- 1B1 CODES/STANDARDS USA

DESCRIPTION: WIRING INSTL-TV/DVD		
1B1	265	68X
SHEET: 3 OF 3	ITEM/PART NO: 000038212 / 31875401000	REV