

- NOTES:**
- △ 6 FUSE LOCATED UNDER DASH BY PARK BRAKE ASM.
 - △ 5 SEE RADIO/MONITOR INSTL FOR ADDITIONAL INFORMATION.
 - △ 4 FUSE LOCATED UNDER DASH BY STEERING COLUMN.
 - 3. USE WIRE TIES 8343-04-000 AND 116673-02-000 APPROXIMATELY 600MM ON CENTER UNLESS OTHERWISE SPECIFIED.
 - 2. SECURE CONDUIT 41953, TAB AS REQUIRED, OVER ALL WIRES IN CONTACT WITH SHARP EDGES.
 - △ 1 CUT LIGHT GREEN/RED WIRE FROM PARK BRAKE SWITCH AND RECONNECT TO CIRCUIT DY OF CHASSIS ASM AS SHOWN.

- △ 10 SEE BATTERY INSTL FOR ADDITIONAL INFORMATION.
- △ 9 SEE WIRING INSTL-BODY, 110V FOR ADDITIONAL INFORMATION.
- △ 8 SEE SHEET 3 FOR ADDITIONAL INFORMATION.
- △ 7 SEE LOAD CENTER ASM FOR ADDITIONAL INFORMATION.

- 09A PREMIUM PACKAGE
- 401 INVERTER-DC/AC, 1000 WATT
- 283 MIRRORS-UPGRADE W/CAMERA
- 965 SEAT PEDESTALS-SWIVEL/SLIDE
- 16Y FORD CHASSIS - 14,500#_GVWR
- 265 CODES/STANDARDS-CSA/CMVSS
- 1B1 CODES/STANDARDS USA

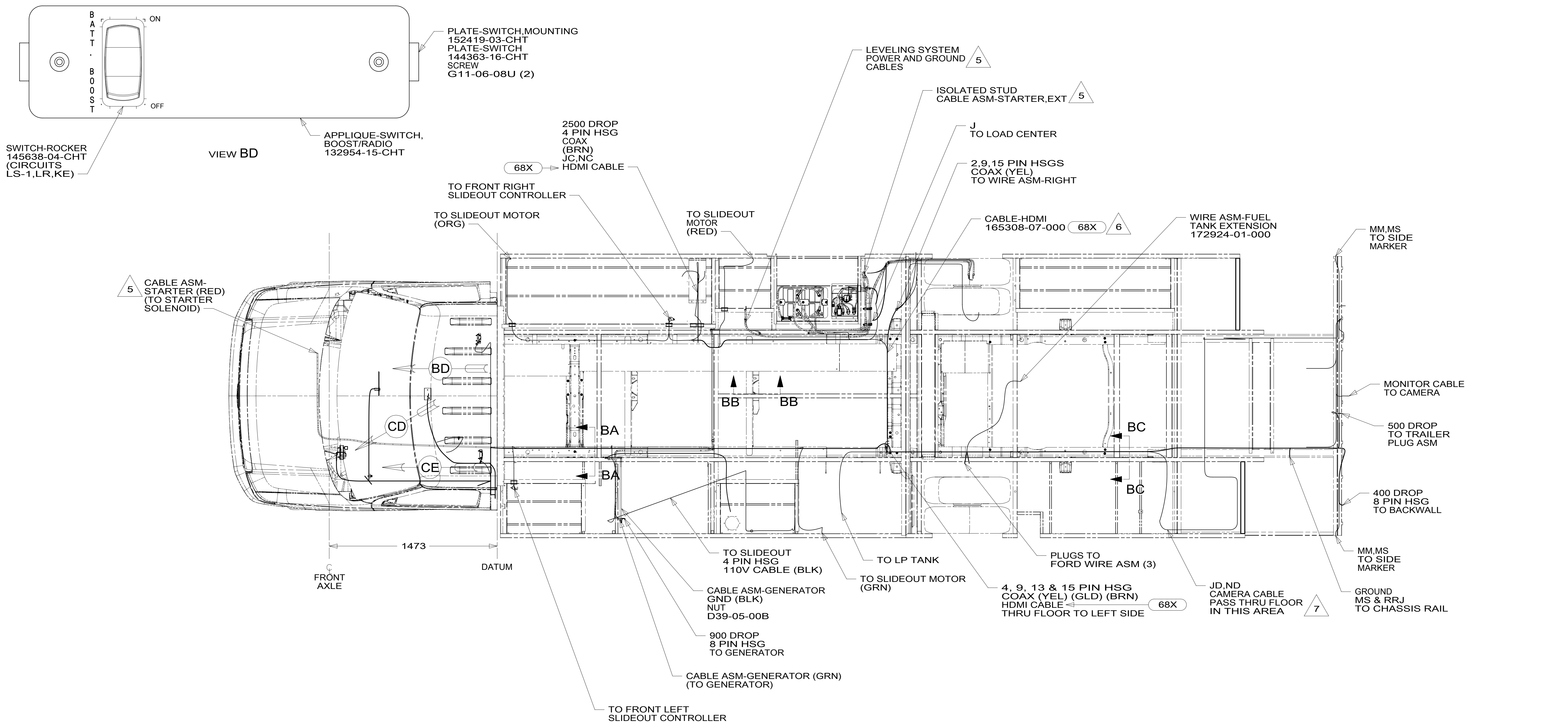
WINNEBAGO
COPYRIGHT 2016 WINNEBAGO INDUSTRIES, INC.

DSNR:	ALL DIMENSIONS ARE IN MILLIMETERS
DIFFR:	
UNSPECIFIED TOLERANCES:	MATERIAL:
WHOLE DIM (X) : 3	
ONE-PLACE (X.X) : 1.5	
TWO-PLACE (X.XX) : 0.50	
ANGLE : 1°	
REFER TO ES0018 FOR FASTENER TIGHTENING GUIDELINES	WEIGHT: (LBS) FIRST USED: 18 331D
DESCRIPTION: WIRING INSTL-CHASSIS	
SHEET: 1 OF 3	ITEM/PART NO: 000038186 / 31874401000
REF:	

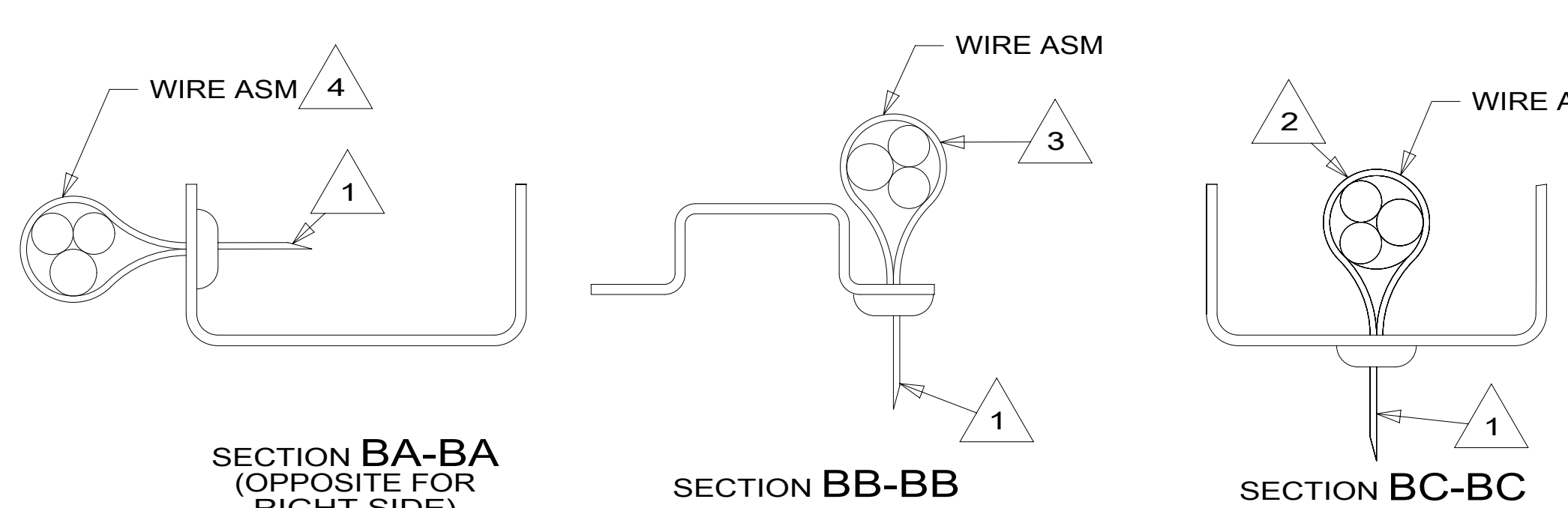
FOR ELECTRICAL TORQUE SPECIFICATIONS SEE DWG NO. 128783-01-000

FOR ELECTRICAL CALLOUTS SEE DWG NO. 121339-01-000

8 7 6 5 4 3 2 1



- NOTES:**
- 7 COIL WIRES HERE FOR TRANSPORTATION PURPOSES.
 - 6 HDMI CABLE IS TO BE ROUTED WITH WIRE ASM-CHASSIS FROM UNDER DINETTE SEAT ON RIGHT SIDE THRU WIRE TRACK AND ON TO AND THRU FLOOR TO WIRE ASM-LEFT.
 - 5 SEE BATTERY INSTL FOR ADDITIONAL INFORMATION.
 - 4 WIRES TO BE TIED TO CROSS MEMBER USING EXISTING HOLES.
 - 3 WIRES TO BE TIED TO TOP OF RAIL USING EXISTING HOLES.
 - 2 WIRES TO BE TIED TO INSIDE OF RAIL USING EXISTING HOLES.
 - 1 CUT OFF EXCESS END OF WIRE TIE.



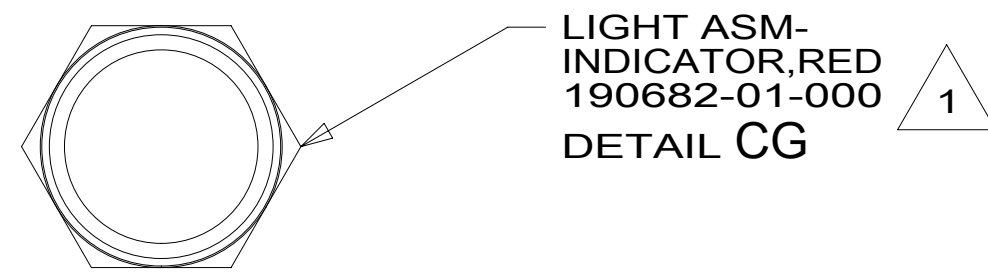
FOR ELECTRICAL TORQUE SPECIFICATIONS SEE DWG NO. 128783-01-000

FOR ELECTRICAL CALLOUTS SEE DWG NO. 121339-01-000

68X	TV - BEDROOM	
16Y	FORD CHASSIS - 14,500#_GVWR	
265	CODES/STANDARDS-CSA/CMVSS	
1B1	CODES/STANDARDS USA	
1B1	265	16Y
DESCRIPTION: WIRING INSTL-CHASSIS		
SHEET: 2 OF 3	ITEM/PART NO: 000038186 / 31874401000	REV

8 7 6 5 4 3 2 1 17-Oct-2017

8 7 6 5 4 3 2 1



LIGHT ASM-INDICATOR, RED
190682-01-000
DETAIL CE

1

JACKS DOWN
LABEL-JACKS DOWN
133533-01-CHT

DETAIL CE 60M

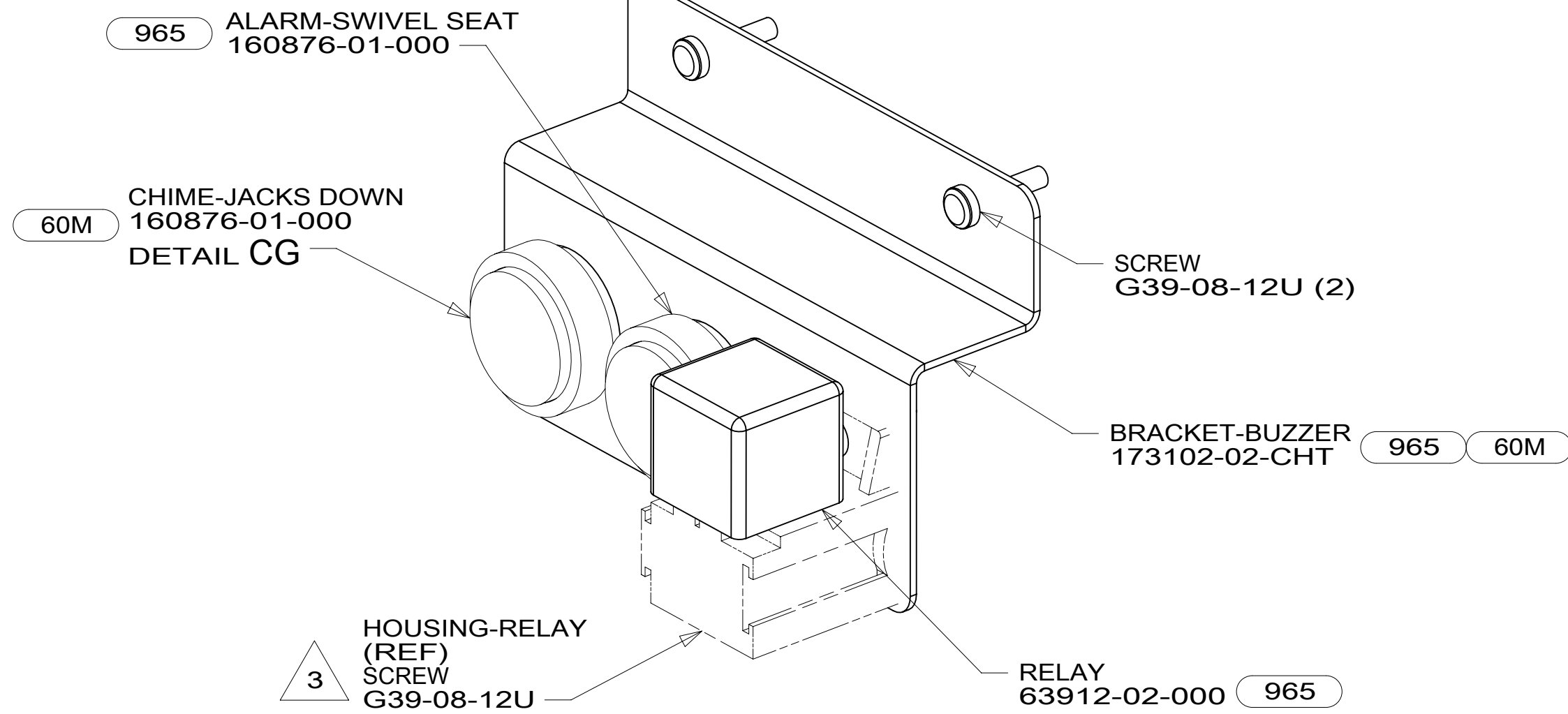
148



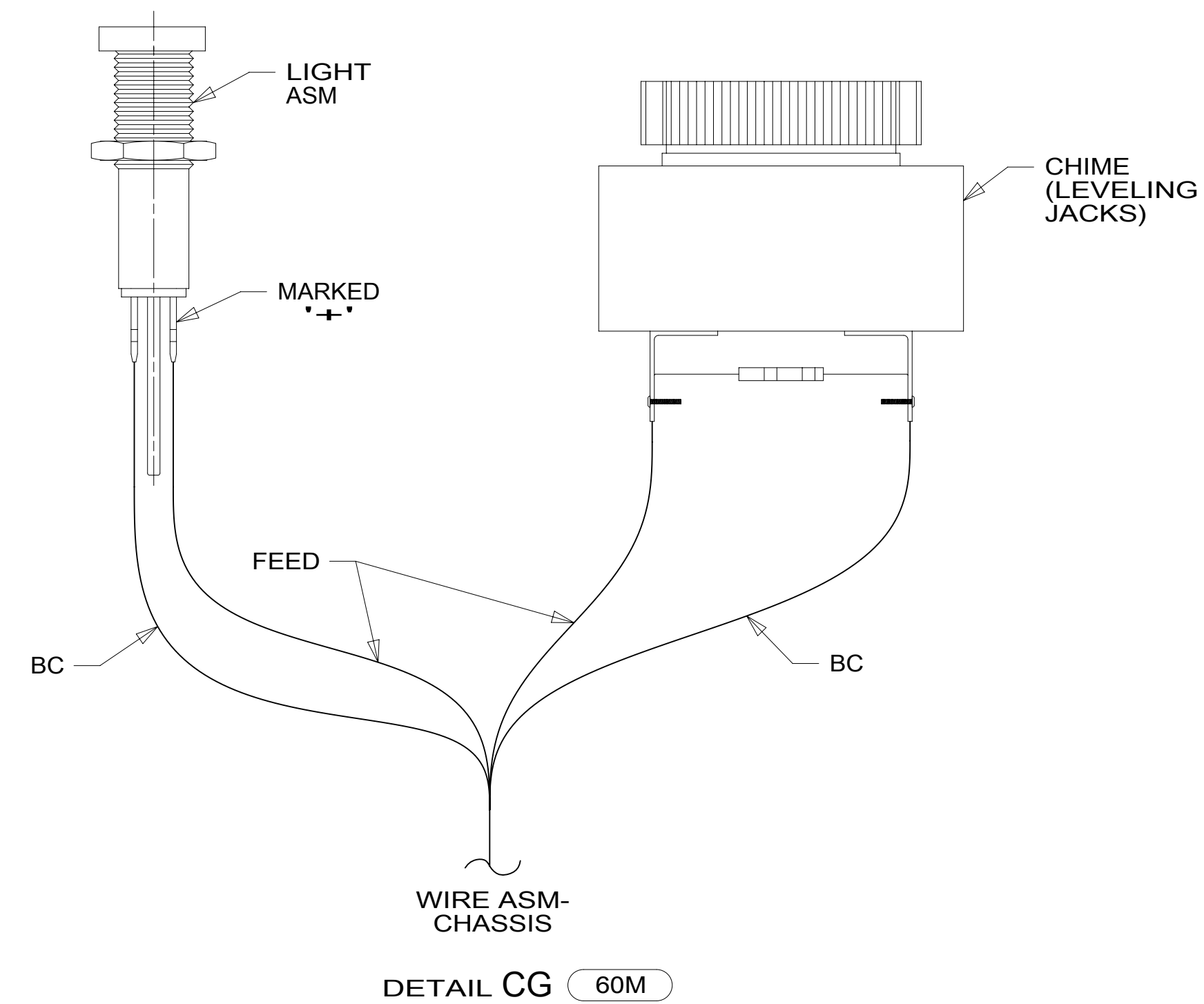
20

RIGHT SIDE OF
STEERING COLUMN

DETAIL CF 60M

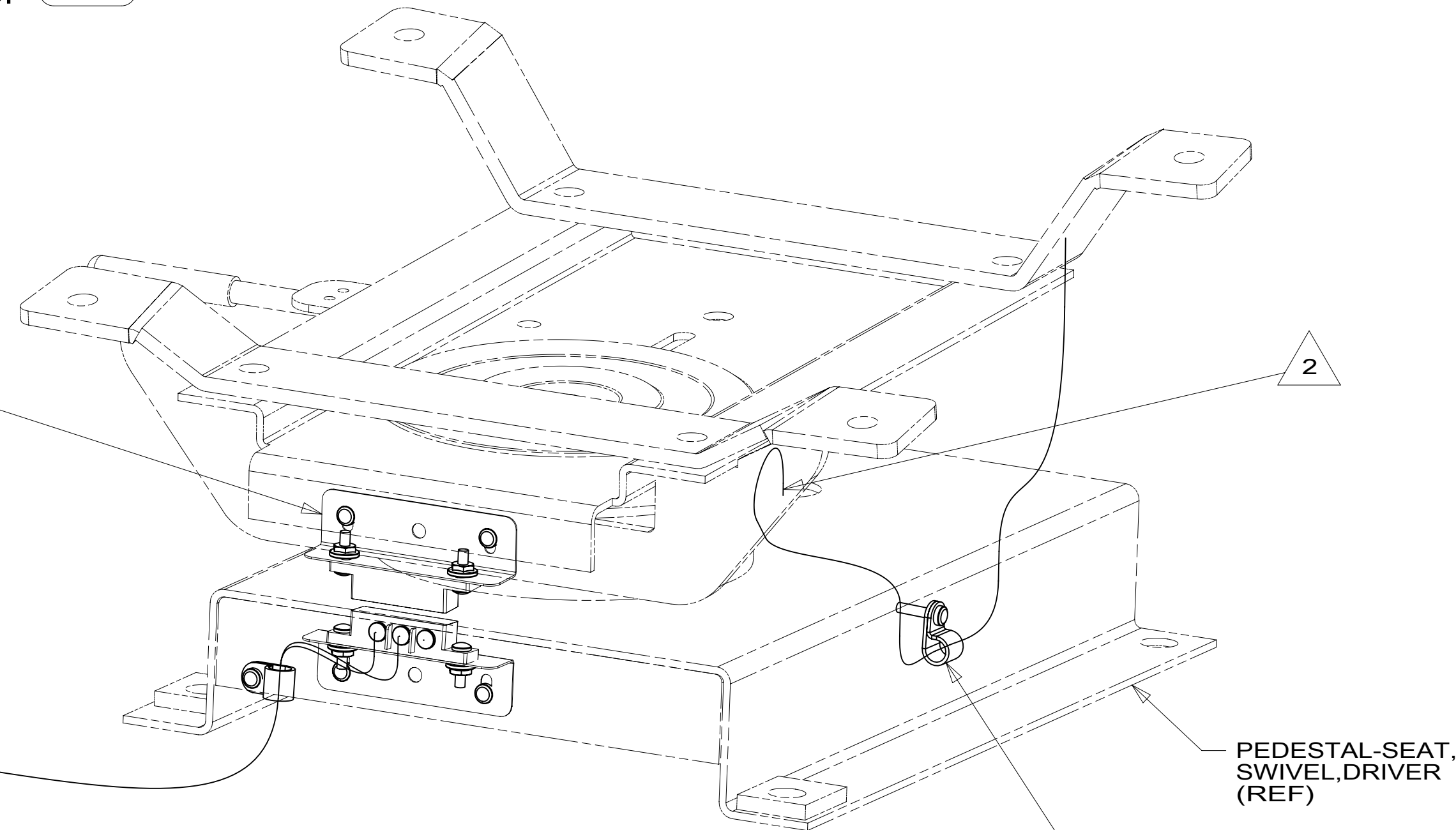


VIEW CD



DETAIL CG 60M

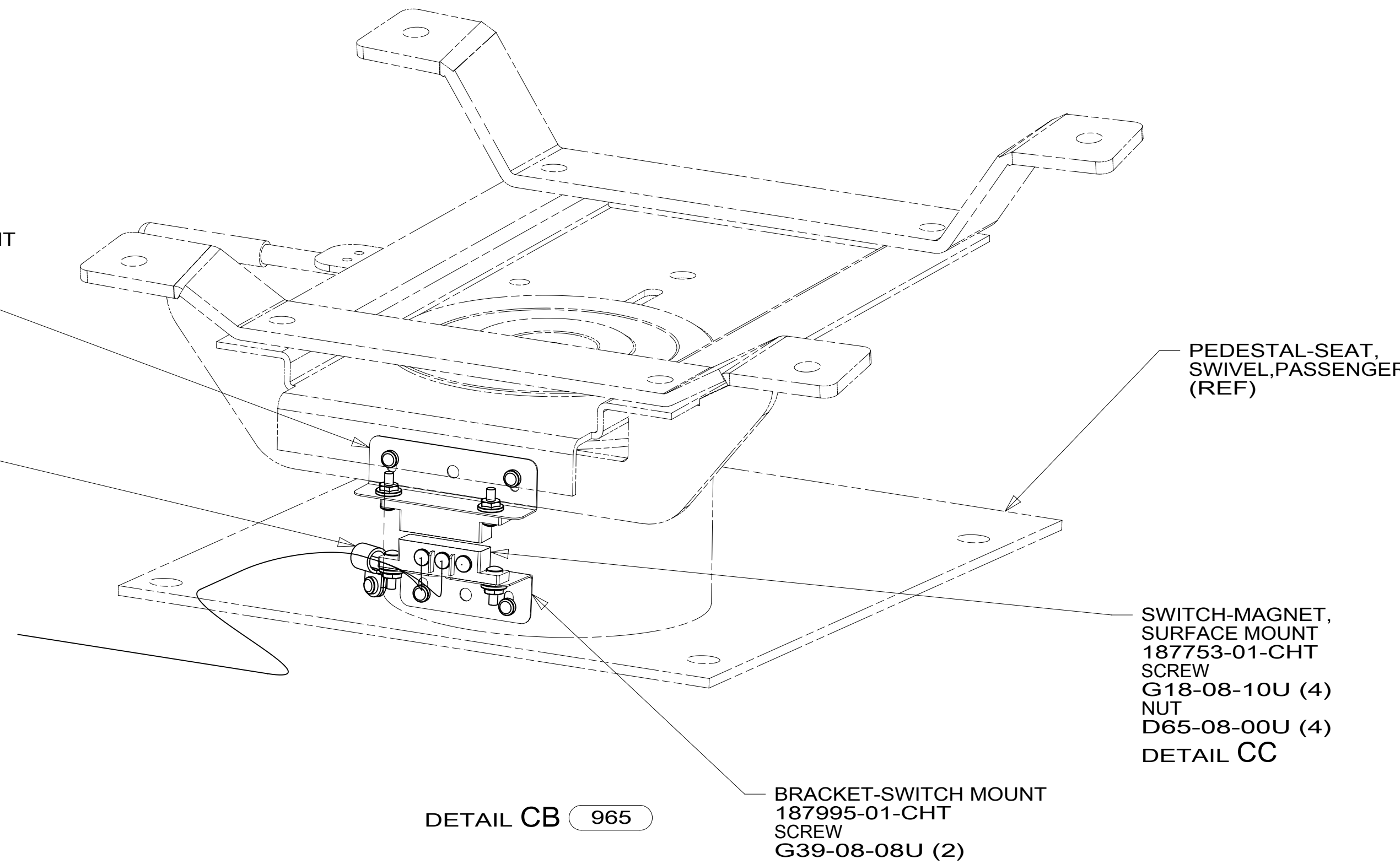
BRACKET-SWITCH MOUNT
187994-01-CHT (2)
SCREW
G39-08-08U (4)
SWITCH-MAGNET,
SURFACE MOUNT
187753-01-CHT
SCREW
G18-08-10U (4)
NUT
D65-08-00U (4)
DETAIL CC



DETAIL CA 965

BRACKET-SWITCH MOUNT
187994-01-CHT
SCREW
G39-08-08U (2)

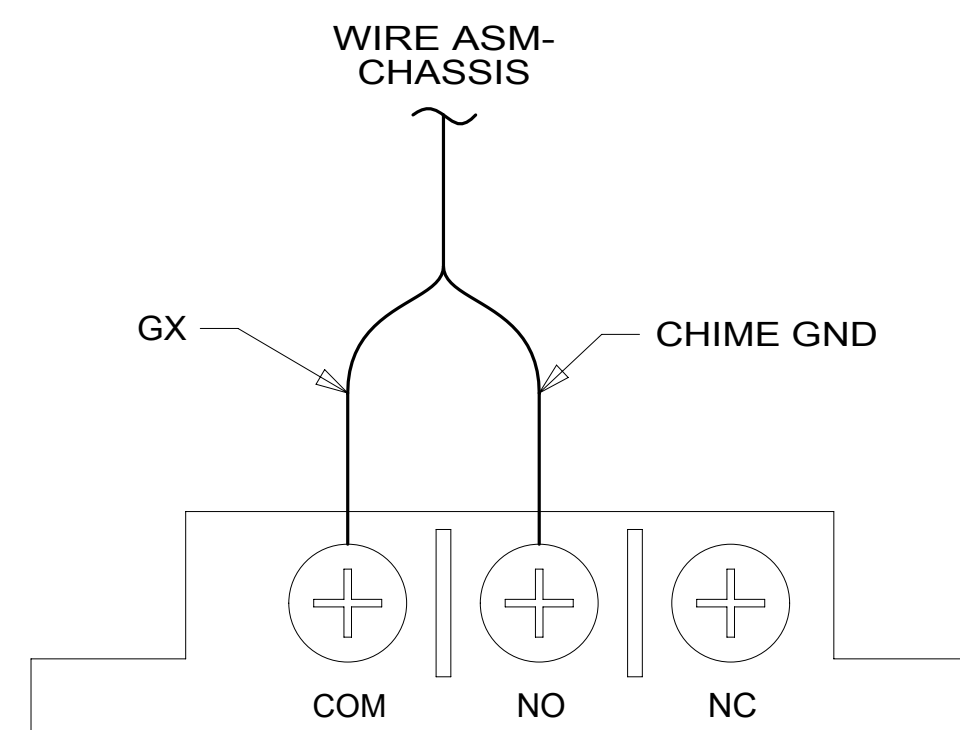
CLAMP-CABLE
10495-02-000
SCREW
G39-08-06U



DETAIL CB 965

PEDESTAL-SEAT,
SWIVEL, PASSENGER
(REF)

SWITCH-MAGNET,
SURFACE MOUNT
187753-01-CHT
SCREW
G18-08-10U (4)
NUT
D65-08-00U (4)
DETAIL CC



DETAIL CC

- NOTES:
- 3 PART OF WIRE ASM-SWIVEL SEATS.
 - 2 COVER WIRING WITH CONVOLUTE 41953-01-000 (150 MM) TO PROTECT WIRES FROM SHARP EDGES WHERE THEY PASS THROUGH SEAT PEDESTAL. SECURE BOTH ENDS TO WIRES WITH TAPE 8363-01-000.
 - 1 FOR HOLE SIZE AND LOCATION SEE DETAIL CF.

FOR ELECTRICAL
TORQUE
SPECIFICATIONS
SEE DWG NO.
128783-01-000

FOR ELECTRICAL
CALLOUTS
SEE DWG NO.
121339-01-000

- 965 SEAT PEDESTALS-SWIVEL/SLIDE
- 60M HYDRAULIC LEVEL JACKS-AUTO
- 16Y FORD CHASSIS - 14,500#_GVWR
- 265 CODES/STANDARDS-CSA/CMVSS
- 1B1 CODES/STANDARDS USA

DESCRIPTION:	1B1 265 16Y	
WIRING INSTL-CHASSIS		
SHEET:	ITEM/PART NO:	REV
3 OF 3	000038186 / 31874401000	

8 7 6 5 4 3 2 1 17-Oct-2017