

8 7 6 5 4 3 2 1

D

D

C

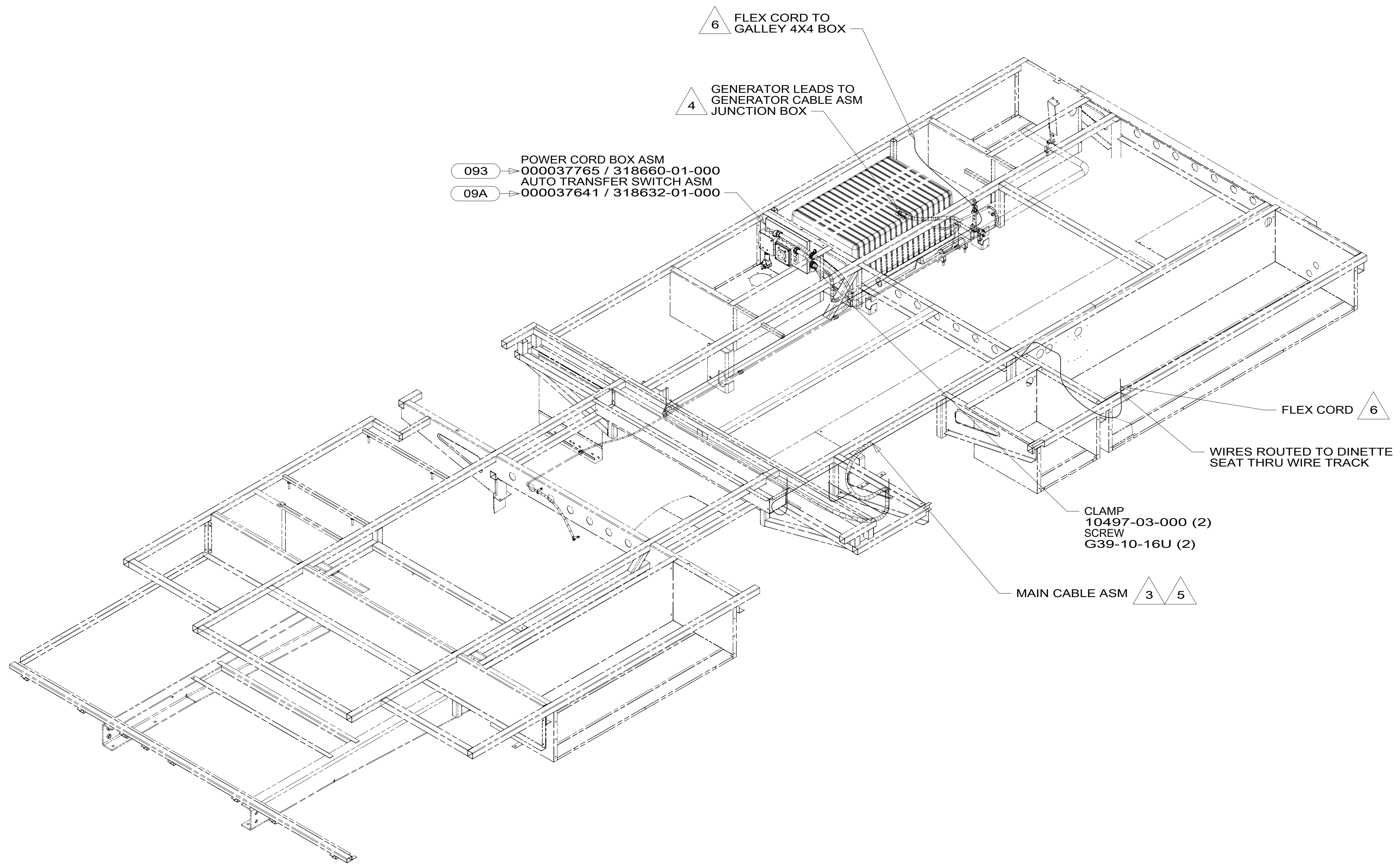
C

B

B

A

A



- 6 WIRE IS PART OF WIRE ASM-CHASSIS.
- 5 SEE LOAD CENTER ASM FOR ADDITIONAL INFORMATION.
- 4 SEE GENERATOR INSTL FOR ADDITIONAL INFORMATION.
- 3 ROUTE WIRE THRU FLOOR.

2. ALL 110V WIRE TO BE CLAMPED WITH CLAMP 10497-05-000 WITHIN 200MM OF OUTLET BOXES, USE SCREW G67-10-12B.
1. AT MINIMUM ALL WIRES TO BE SUPPORTED AND SECURED PER CODE REQUIREMENTS. USE CLAMP 10495 OR 10497 OR WIRE TIE 8343 OR 108046 AND SCREW G67-XX-XXX OR G56-XX-XXX AS APPROPRIATE FOR INSTALLATION.

NOTES:

093 → POWER CORD BOX ASM
000037765 / 318660-01-000
09A → AUTO TRANSFER SWITCH ASM
000037641 / 318632-01-000

FOR ELECTRICAL TORQUE SPECIFICATIONS SEE DWG NO. 128783-01-000

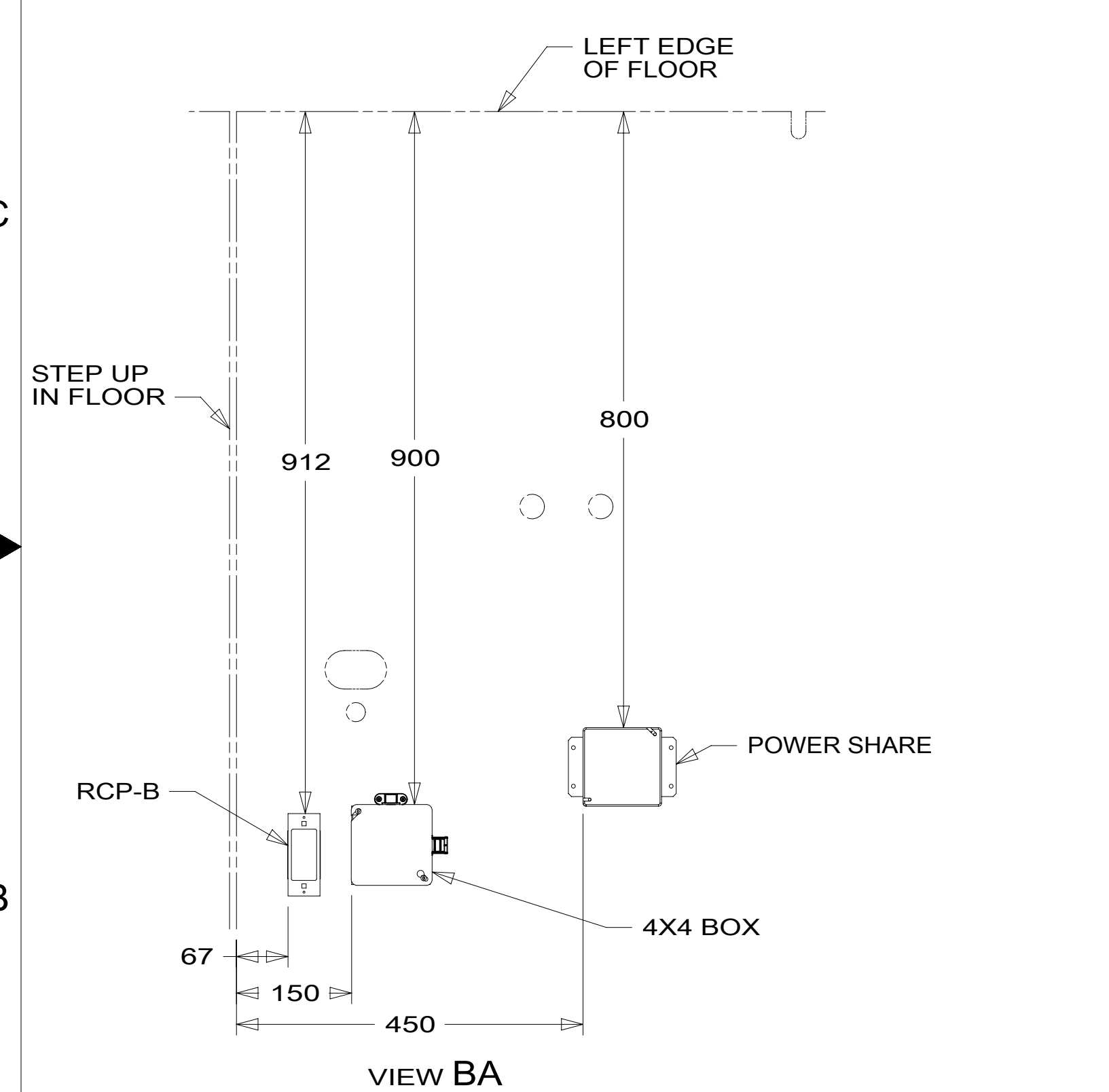
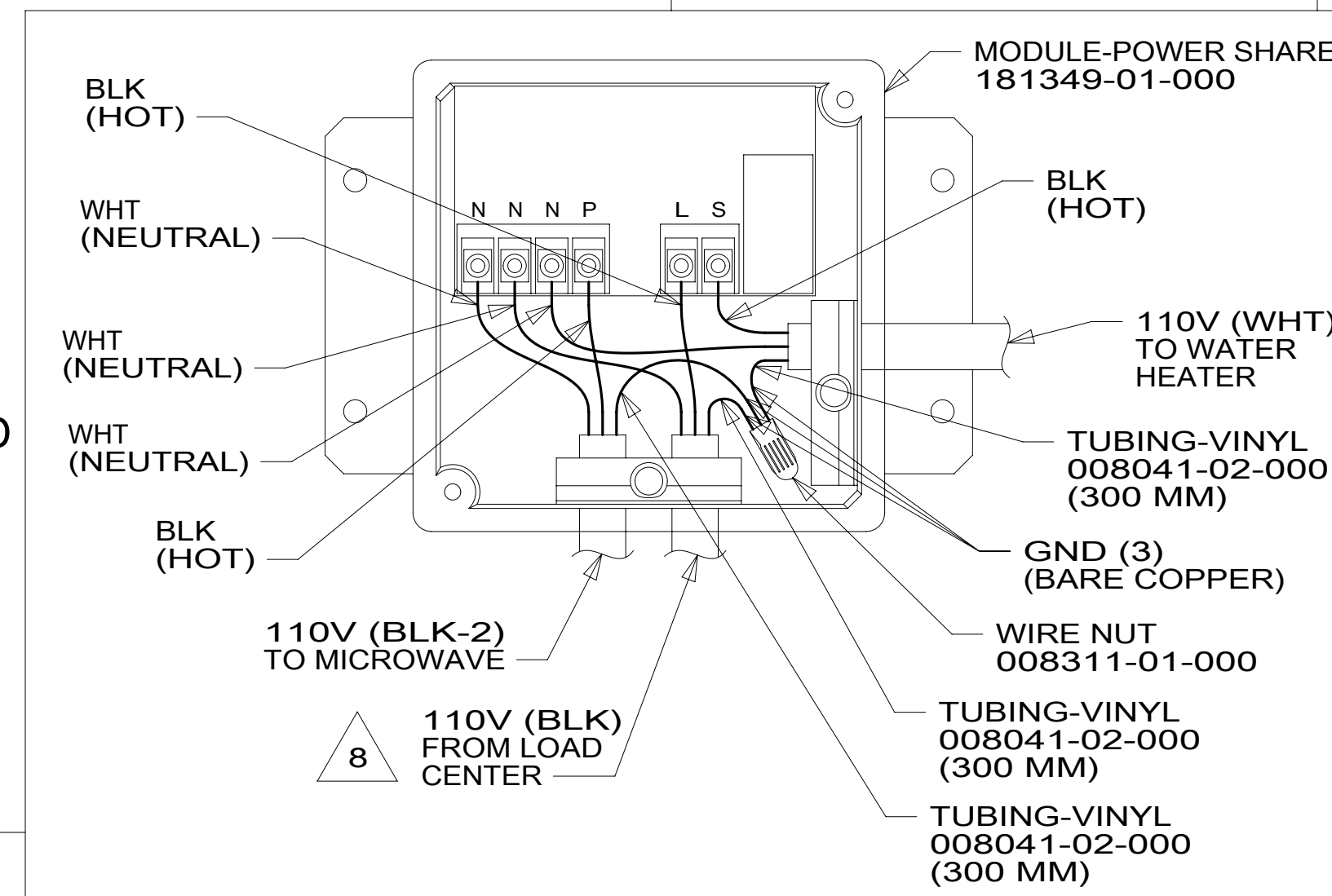
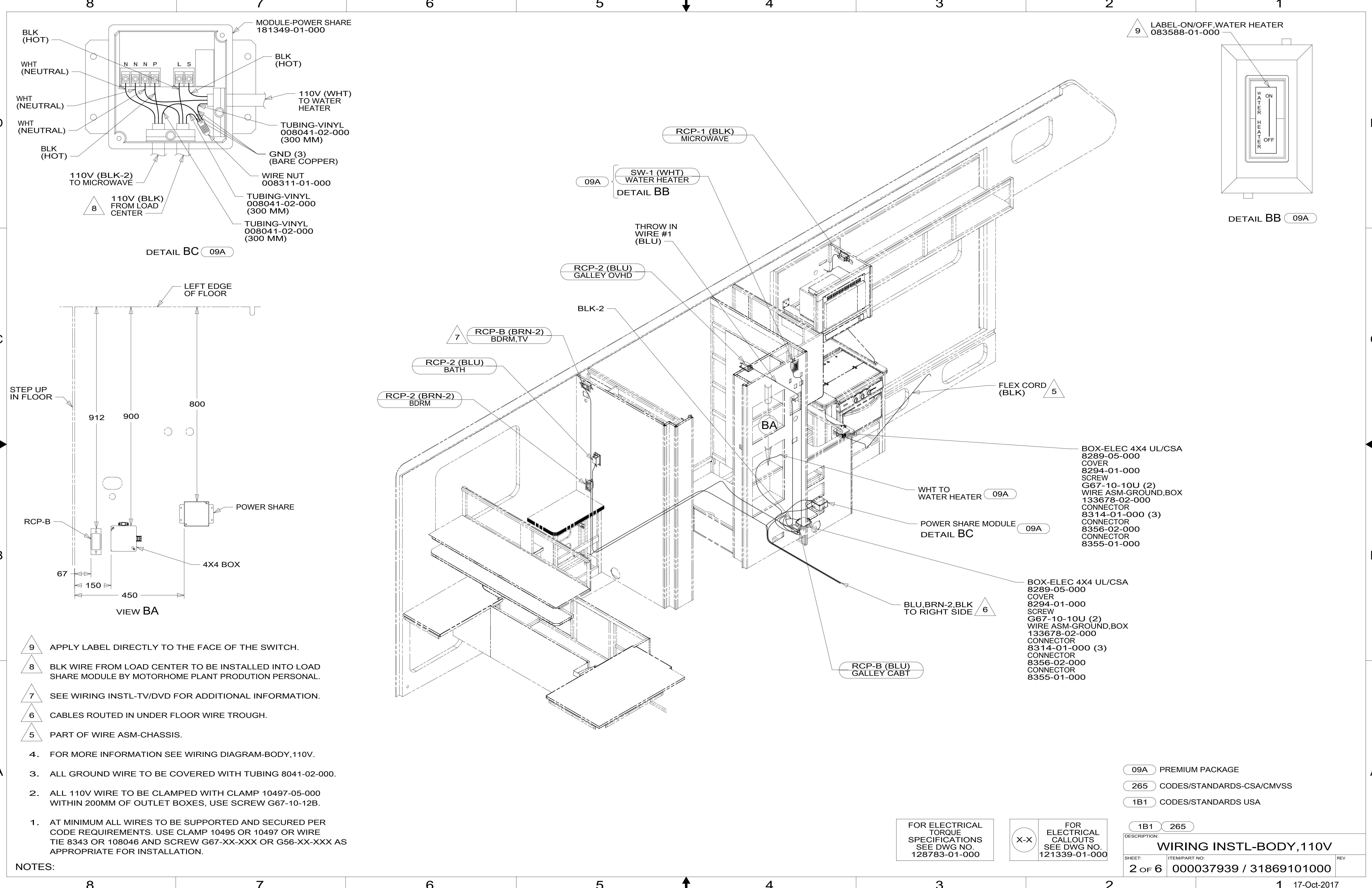
FOR ELECTRICAL CALLOUTS SEE DWG NO. 121339-01-000

- 093 PREMIUM PACKAGE WITHOUT
- 09A PREMIUM PACKAGE
- 265 CODES/STANDARDS-CSA/CMVSS
- 1B1 CODES/STANDARDS USA

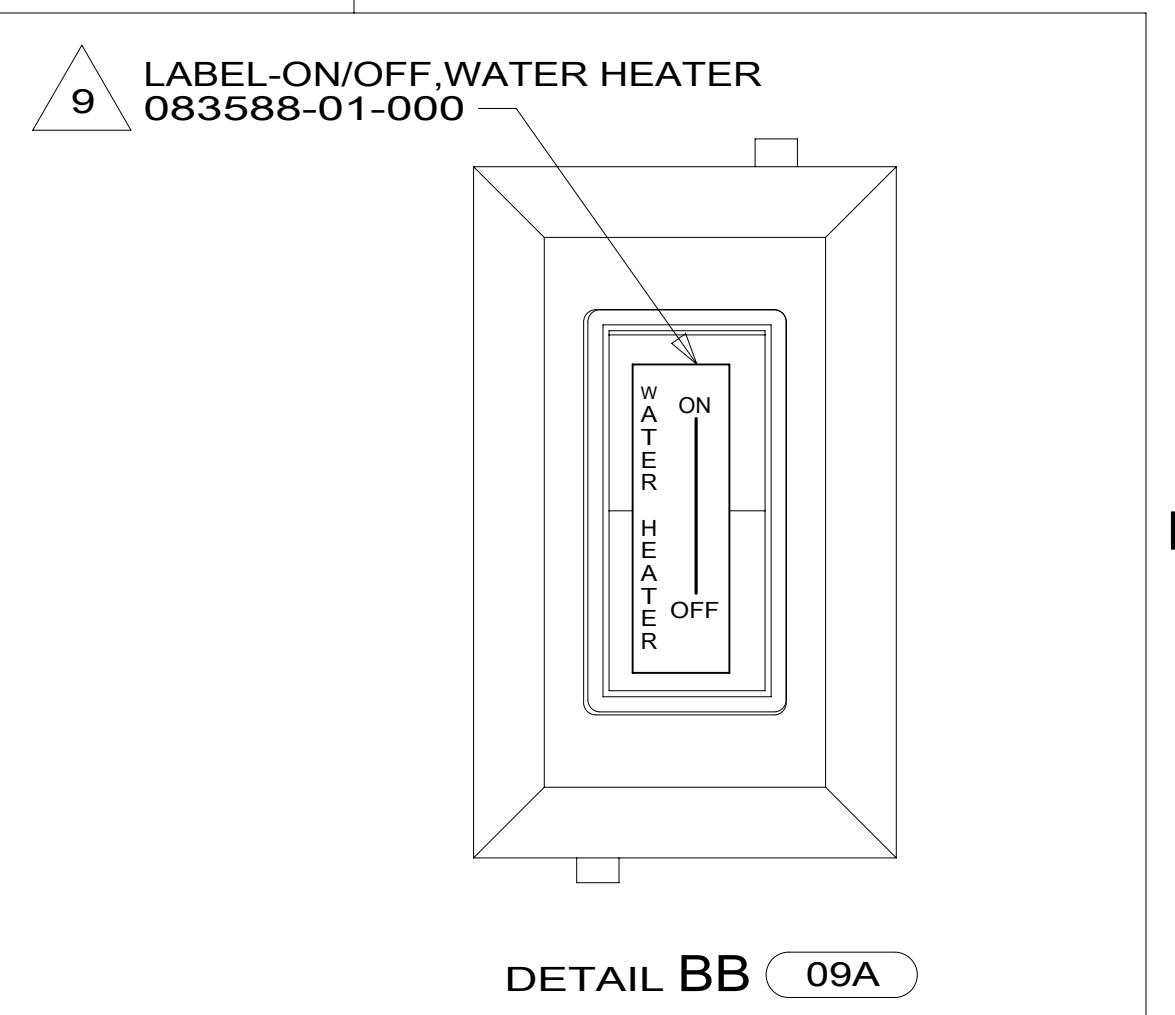
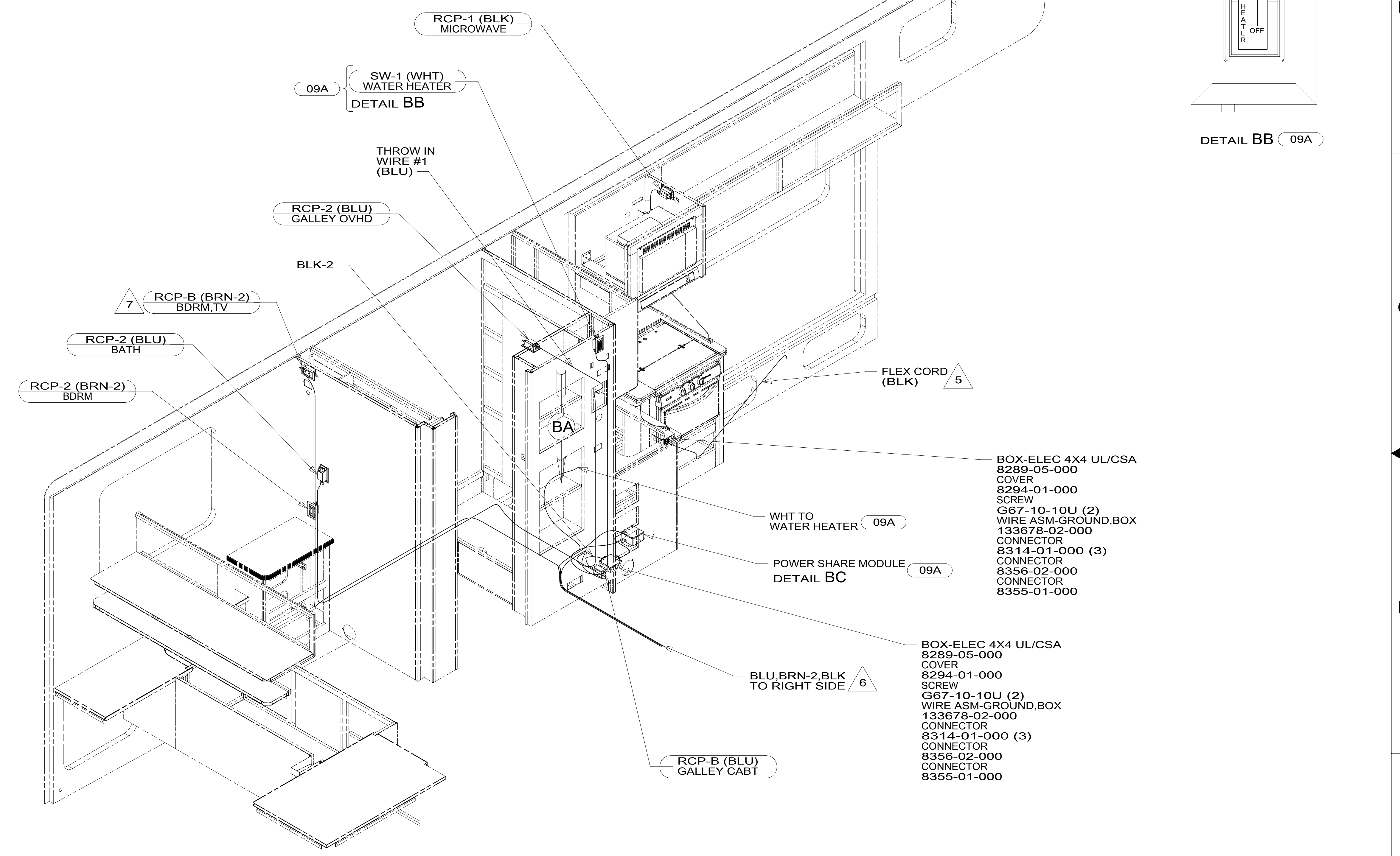
WINNEBAGO
COPYRIGHT 2016 WINNEBAGO INDUSTRIES, INC.

DSNR:	ALL DIMENSIONS ARE IN MILLIMETERS	
DIFTR:		
UNSPECIFIED TOLERANCES:	MATERIAL:	
WHOLE DIM (X) : 3		
ONE-PLACE (X.X) : 1.5		
TWO-PLACE (X.XX) : 0.50		
ANGLE : 1°		
REFER TO ES0018 FOR FASTENER TIGHTENING GUIDELINES	WEIGHT: (LBS)	FIRST USED: 18 331D
DESCRIPTION: WIRING INSTL-BODY, 110V		
SHEET: 1 OF 6	ITEM/PART NO.: 000037939 / 31869101000	REV:
REF:		1 17-Oct-2017

8 7 6 5 4 3 2 1



- NOTES:
1. AT MINIMUM ALL WIRES TO BE SUPPORTED AND SECURED PER CODE REQUIREMENTS. USE CLAMP 10495 OR 10497 OR WIRE TIE 8343 OR 108046 AND SCREW G67-XX-XXX OR G56-XX-XXX AS APPROPRIATE FOR INSTALLATION.
 2. ALL 110V WIRE TO BE CLAMPED WITH CLAMP 10497-05-000 WITHIN 200MM OF OUTLET BOXES, USE SCREW G67-10-12B.
 3. ALL GROUND WIRE TO BE COVERED WITH TUBING 8041-02-000.
 4. FOR MORE INFORMATION SEE WIRING DIAGRAM-BODY, 110V.
 5. PART OF WIRE ASM-CHASSIS.
 6. CABLES ROUTED IN UNDER FLOOR WIRE TROUGH.
 7. SEE WIRING INSTL-TV/DVD FOR ADDITIONAL INFORMATION.
 8. BLK WIRE FROM LOAD CENTER TO BE INSTALLED INTO LOAD SHARE MODULE BY MOTORHOME PLANT PRODUCTION PERSONAL.
 9. APPLY LABEL DIRECTLY TO THE FACE OF THE SWITCH.

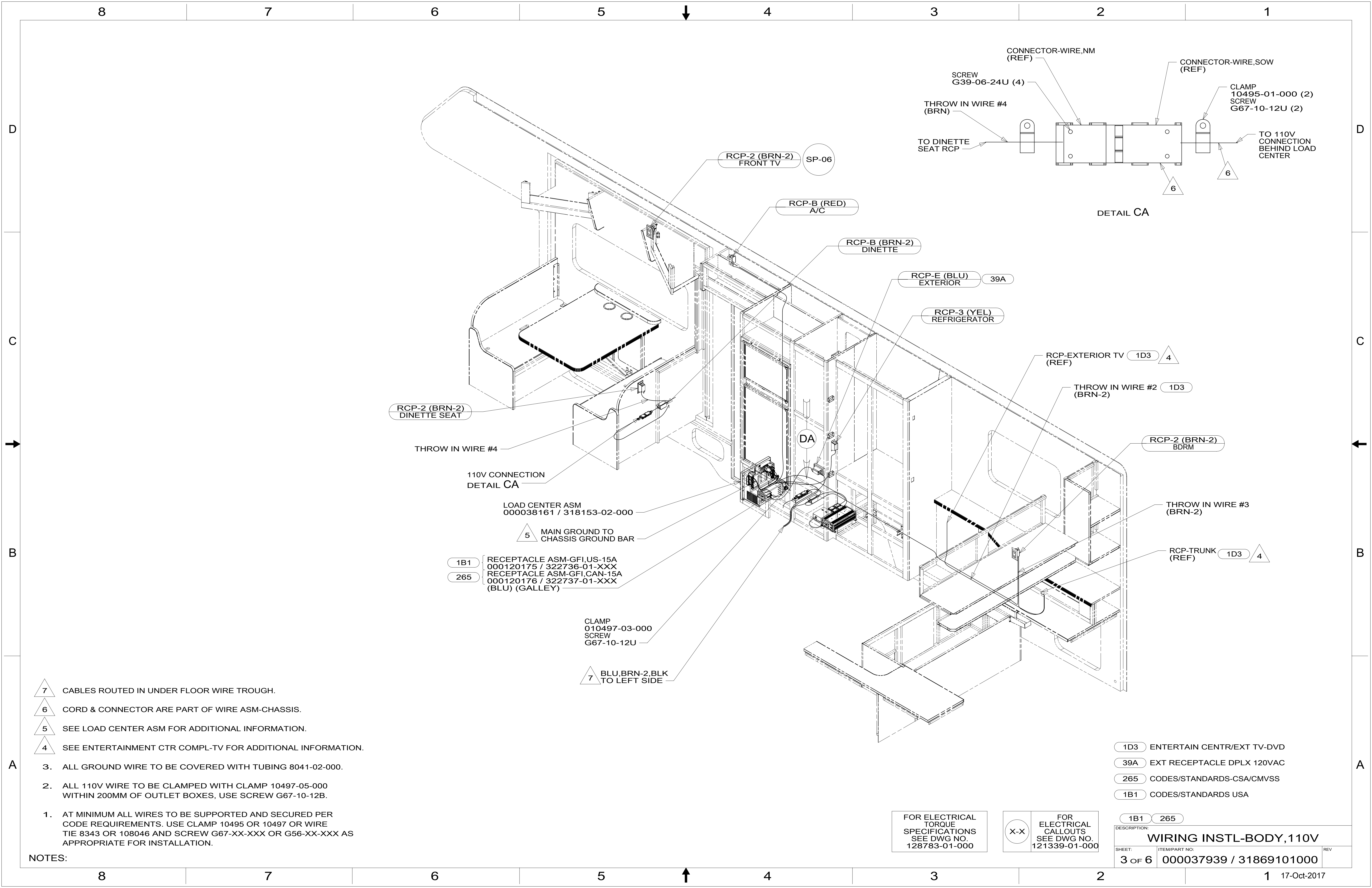


FOR ELECTRICAL TORQUE SPECIFICATIONS SEE DWG NO. 128783-01-000

FOR ELECTRICAL CALLOUTS SEE DWG NO. 121339-01-000

- 09A PREMIUM PACKAGE
- 265 CODES/STANDARDS-CSA/CMVSS
- 1B1 CODES/STANDARDS USA

DESCRIPTION: WIRING INSTL-BODY, 110V		
SHEET: 2 OF 6	ITEM/PART NO: 000037939 / 31869101000	REV



- 7 CABLES ROUTED IN UNDER FLOOR WIRE TROUGH.
- 6 CORD & CONNECTOR ARE PART OF WIRE ASM-CHASSIS.
- 5 SEE LOAD CENTER ASM FOR ADDITIONAL INFORMATION.
- 4 SEE ENTERTAINMENT CTR COMPL-TV FOR ADDITIONAL INFORMATION.

3. ALL GROUND WIRE TO BE COVERED WITH TUBING 8041-02-000.
2. ALL 110V WIRE TO BE CLAMPED WITH CLAMP 10497-05-000 WITHIN 200MM OF OUTLET BOXES, USE SCREW G67-10-12B.
1. AT MINIMUM ALL WIRES TO BE SUPPORTED AND SECURED PER CODE REQUIREMENTS. USE CLAMP 10495 OR 10497 OR WIRE TIE 8343 OR 108046 AND SCREW G67-XX-XXX OR G56-XX-XXX AS APPROPRIATE FOR INSTALLATION.

NOTES:

- 1B1 RECEPTACLE ASM-GFI,US-15A
000120175 / 322736-01-XXX
- 265 RECEPTACLE ASM-GFI,CAN-15A
000120176 / 322737-01-XXX (BLU) (GALLEY)

CLAMP
010497-03-000
SCREW
G67-10-12U

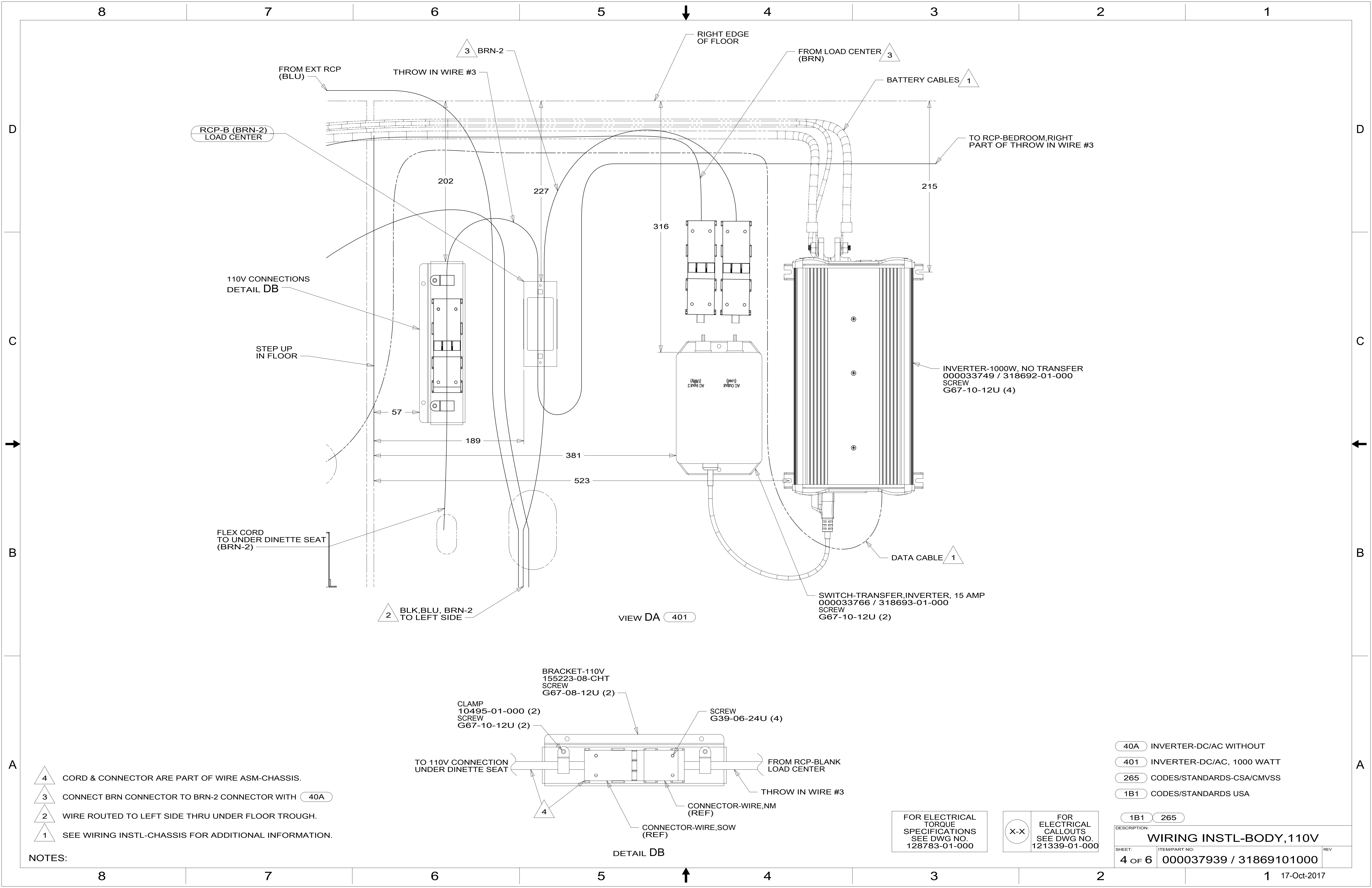
7 BLU,BRN-2,BLK
TO LEFT SIDE

FOR ELECTRICAL
TORQUE
SPECIFICATIONS
SEE DWG NO.
128783-01-000

FOR ELECTRICAL
CALLOUTS
SEE DWG NO.
121339-01-000

- 1D3 ENTERTAIN CENTR/EXT TV-DVD
- 39A EXT RECEPTACLE DPLX 120VAC
- 265 CODES/STANDARDS-CSA/CMVSS
- 1B1 CODES/STANDARDS USA

DESCRIPTION: WIRING INSTL-BODY, 110V	
SHEET: 3 OF 6	ITEM/PART NO.: 000037939 / 31869101000
REV 17-Oct-2017	



RCP-B (BRN-2)
LOAD CENTER

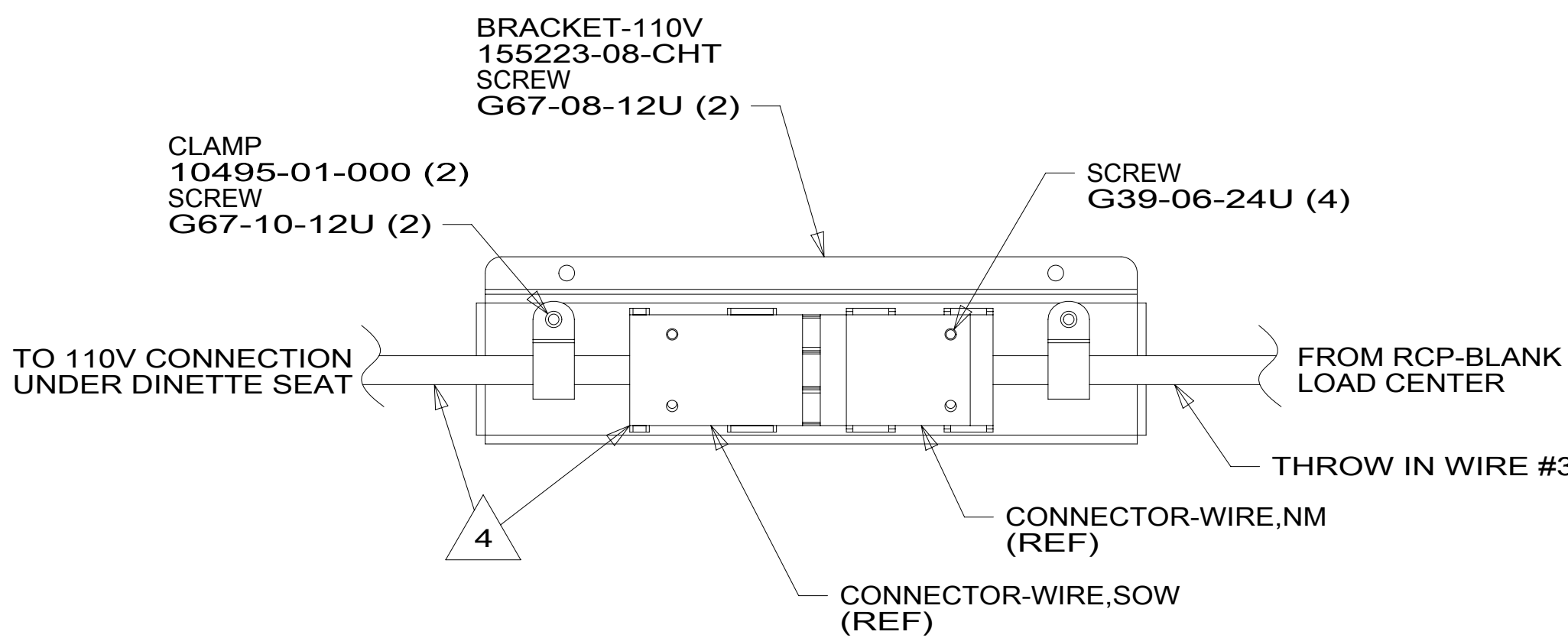
110V CONNECTIONS
DETAIL DB

STEP UP
IN FLOOR

FLEX CORD
TO UNDER DINETTE SEAT
(BRN-2)

2 BLK,BLU, BRN-2
TO LEFT SIDE

VIEW DA 401



DETAIL DB

- NOTES:
- 4 CORD & CONNECTOR ARE PART OF WIRE ASM-CHASSIS.
 - 3 CONNECT BRN CONNECTOR TO BRN-2 CONNECTOR WITH 40A
 - 2 WIRE ROUTED TO LEFT SIDE THRU UNDER FLOOR TROUGH.
 - 1 SEE WIRING INSTL-CHASSIS FOR ADDITIONAL INFORMATION.

- 40A INVERTER-DC/AC WITHOUT
- 401 INVERTER-DC/AC, 1000 WATT
- 265 CODES/STANDARDS-CSA/CMVSS
- 1B1 CODES/STANDARDS USA

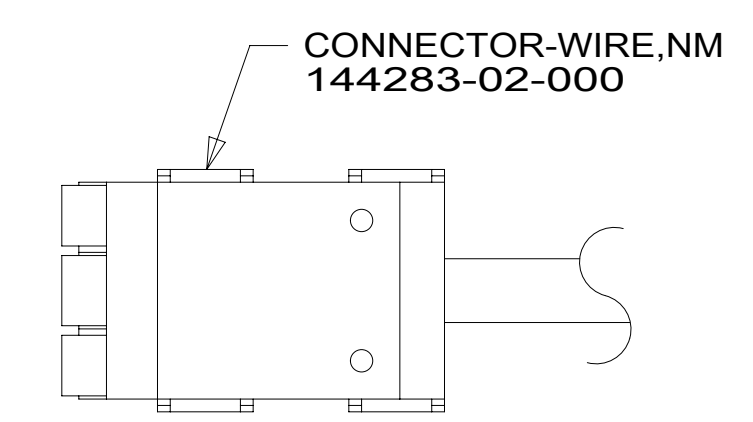
FOR ELECTRICAL
TORQUE
SPECIFICATIONS
SEE DWG NO.
128783-01-000

FOR
ELECTRICAL
CALLOUTS
SEE DWG NO.
121339-01-000

1B1 265

DESCRIPTION: WIRING INSTL-BODY, 110V		
SHEET: 4 OF 6	ITEM/PART NO: 000037939 / 31869101000	REV

RED	1B1	136135-07-036	
	265	136136-07-036	
YEL	1B1	136131-05-017	
	265	136134-05-017	
BLK	1B1	136135-06-037	093
	265	136136-06-037	093
BLK	1B1	136135-06-037	09A
	265	136136-06-037	09A
BLK-2	1B1	136135-06-006	09A
	265	136136-06-006	09A
BRN	1B1	136131-03-015	4
	265	136134-03-015	4
BRN-2	1B1	136131-19-070	4
	265	136134-19-070	4
BLU	1B1	136131-02-089	
	265	136134-02-089	
WHT	1B1	136135-09-069	09A
	265	136136-09-069	09A
THROW IN WIRE #1	1B1	136131-02-032	
	265	136134-02-032	
THROW IN WIRE #2	1B1	136131-19-031	1D3
	265	136134-19-031	1D3
THROW IN WIRE #3	1B1	136131-19-043	4
	265	136134-19-043	4
THROW IN WIRE #4	1B1	136131-19-014	4
	265	136134-19-014	4
MAIN	1B1	164957-07-045	5
	265	164957-08-045	5
GROUND MAIN		136145-06-018	



DETAIL EA

5 WIRE PREP TO INSTALL ON POWER CORD BOX ASM OR TRANSFER SWITCH ASM LOAD CENTER END WILL BE INSTALLED ON LINE.

4 SEE DETAIL EA FOR CONNECTOR INSTALLATION.

3. SEE WIRING INSTL-BODY, 12V FOR ADDITIONAL INFORMATION.

2. SECURE WIRES TO BACKSIDE OF LOAD CENTER WITH WIRE TIE 116673-01-000.

1. ALL GROUND WIRES TO BE COVERED WITH TUBING 8041-02-000.

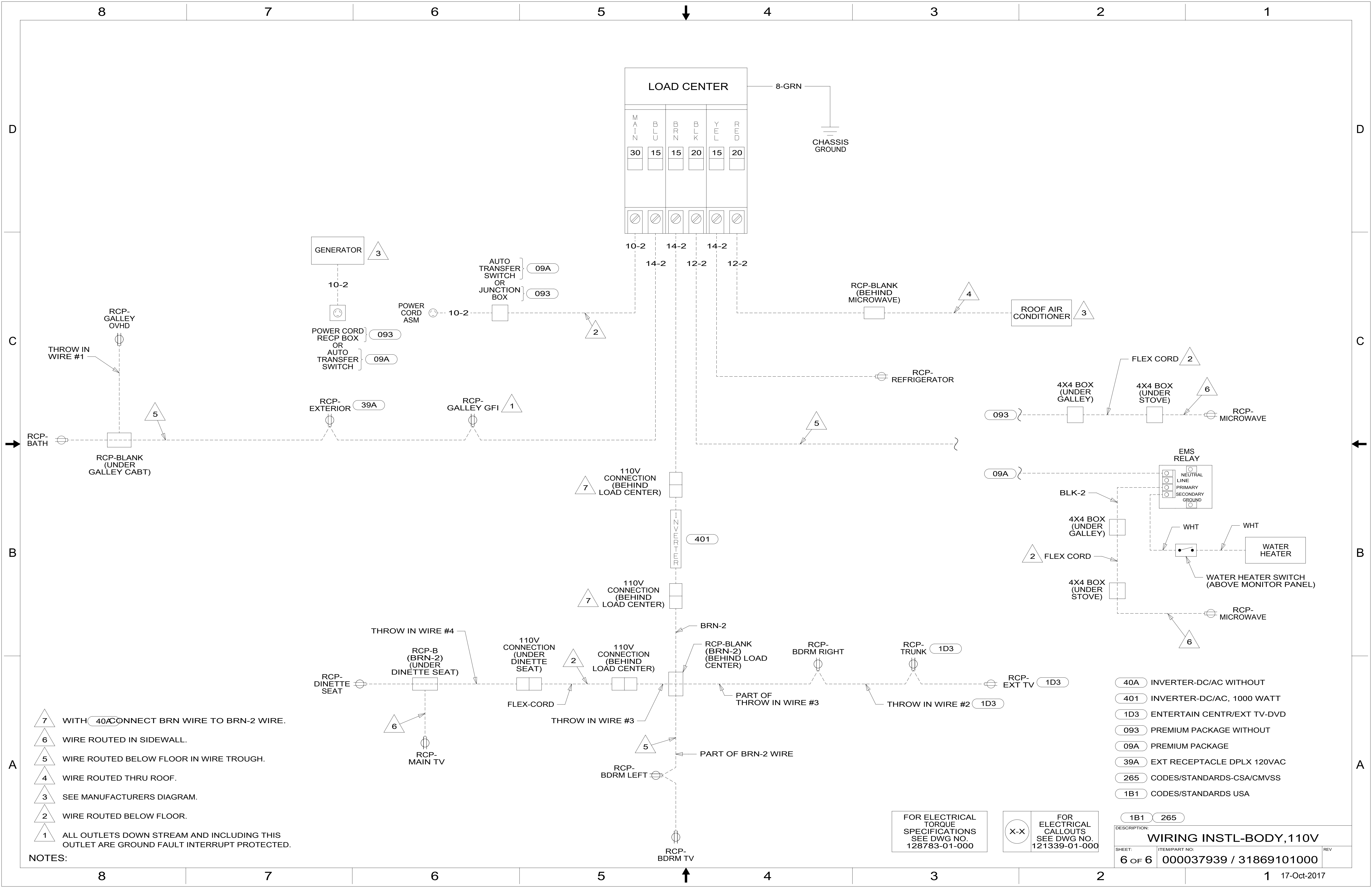
NOTES:

- 1D3 ENTERTAIN CENTR/EXT TV-DVD
- 093 PREMIUM PACKAGE WITHOUT
- 09A PREMIUM PACKAGE
- 265 CODES/STANDARDS-CSA/CMVSS
- 1B1 CODES/STANDARDS USA

FOR ELECTRICAL TORQUE SPECIFICATIONS SEE DWG NO. 128783-01-000

FOR ELECTRICAL CALLOUTS SEE DWG NO. 121339-01-000

1B1	265
DESCRIPTION:	
WIRING INSTL-BODY, 110V	
SHEET:	ITEM/PART NO:
5 OF 6	000037939 / 31869101000
REV	



- 7 WITH 40A CONNECT BRN WIRE TO BRN-2 WIRE.
- 6 WIRE ROUTED IN SIDEWALL.
- 5 WIRE ROUTED BELOW FLOOR IN WIRE TROUGH.
- 4 WIRE ROUTED THRU ROOF.
- 3 SEE MANUFACTURERS DIAGRAM.
- 2 WIRE ROUTED BELOW FLOOR.
- 1 ALL OUTLETS DOWN STREAM AND INCLUDING THIS OUTLET ARE GROUND FAULT INTERRUPT PROTECTED.

- 40A INVERTER-DC/AC WITHOUT
- 401 INVERTER-DC/AC, 1000 WATT
- 1D3 ENTERTAIN CENTR/EXT TV-DVD
- 093 PREMIUM PACKAGE WITHOUT
- 09A PREMIUM PACKAGE
- 39A EXT RECEPTACLE DPLX 120VAC
- 265 CODES/STANDARDS-CSA/CMVSS
- 1B1 CODES/STANDARDS USA

FOR ELECTRICAL TORQUE SPECIFICATIONS SEE DWG NO. 128783-01-000

X-X FOR ELECTRICAL CALLOUTS SEE DWG NO. 121339-01-000

DESCRIPTION: WIRING INSTL-BODY, 110V		
SHEET: 6 OF 6	ITEM/PART NO.: 000037939 / 31869101000	REV: 17-Oct-2017

NOTES: