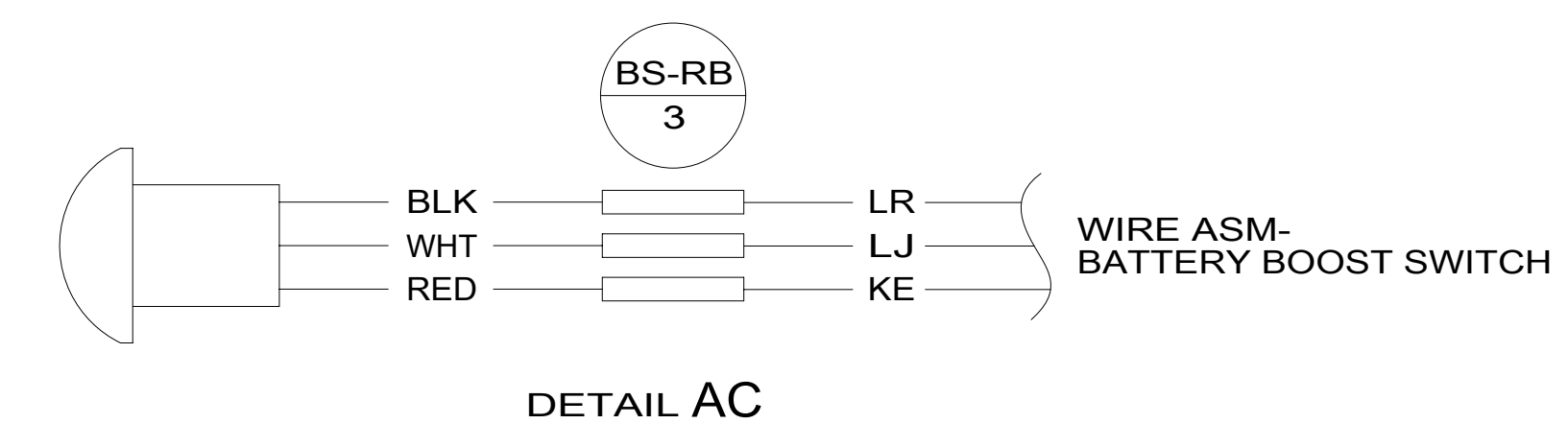
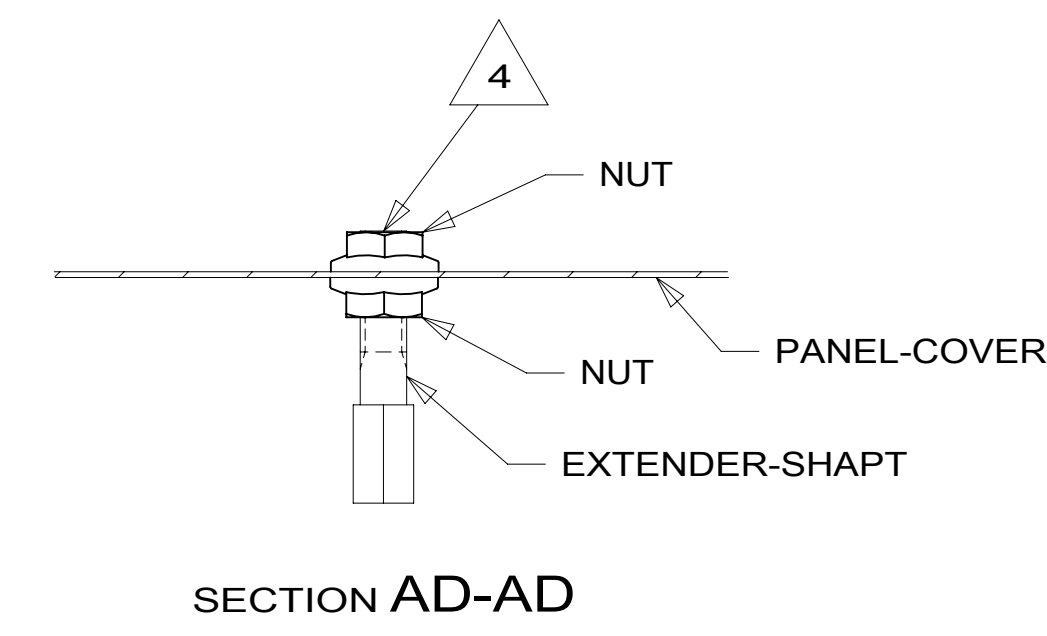
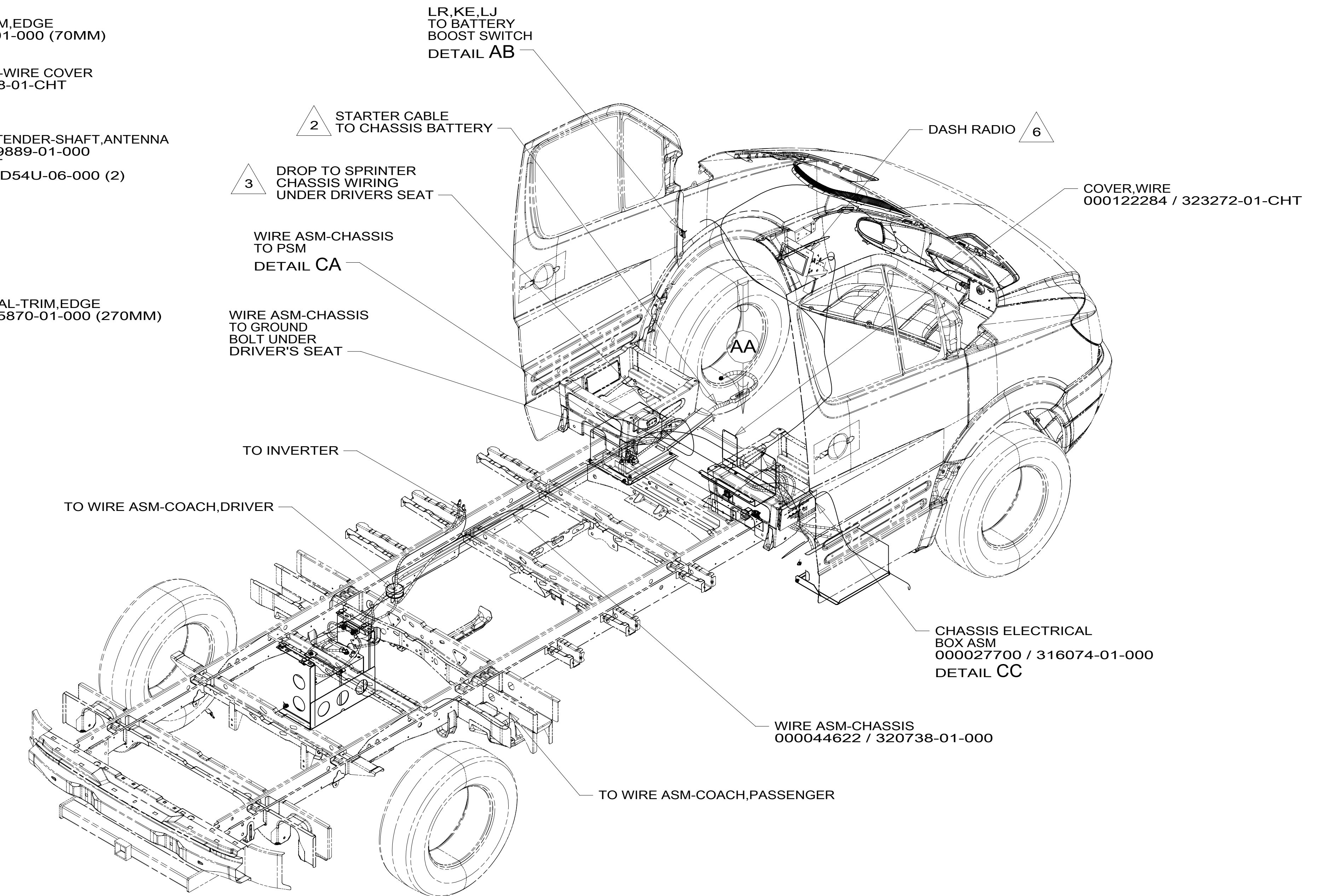
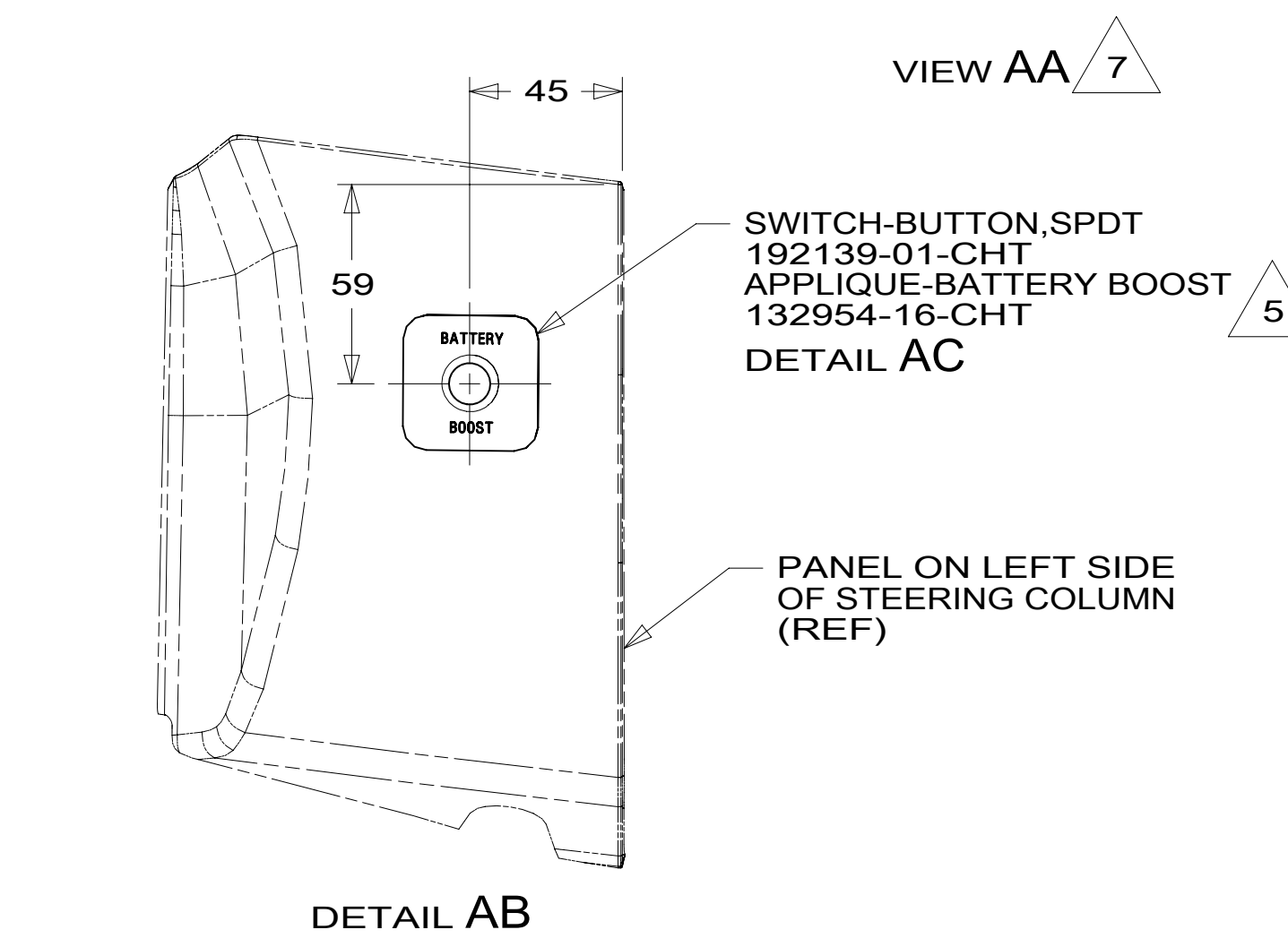
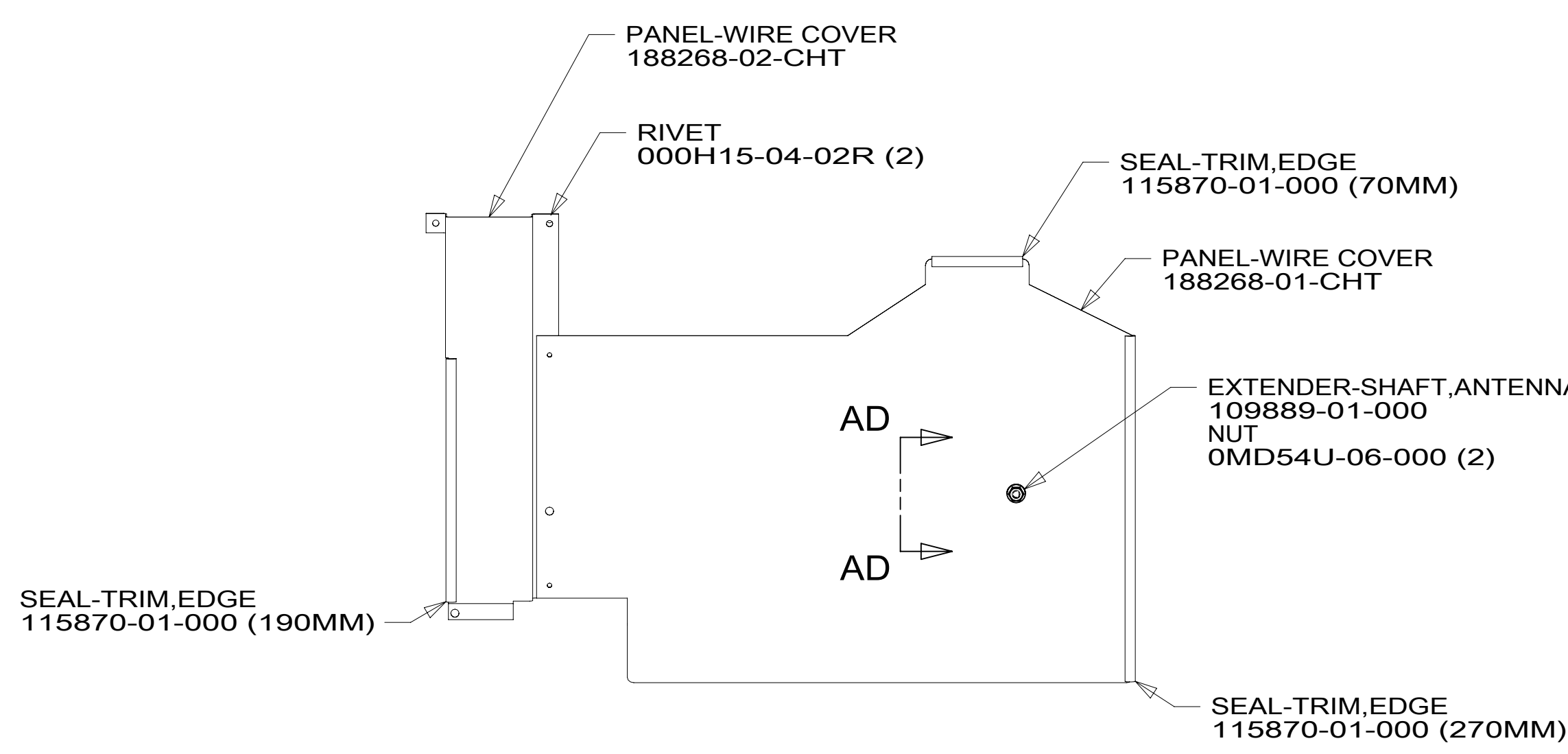


8 7 6 5 4 3 2 1



- NOTES:
- 7 REMOVE PLASTIC TRAY AND DISCARD.
 - 6 SEE SHT 5 AND SHT 6 FOR ADDITIONAL INFORMATION.
 - 5 DRILL 12.3 MM HOLE INTO DASH PANEL.
 - 4 INSTALL NUT SO THAT IT IS FLUSH WITH TOP OF EXTENDER-SHAFT.
 - 3 CUT WIRE TIE AROUND SPRINTER SEAL, ROUTE THE CHASSIS WIRING THROUGH HOLE AND WIRE TIE SEAL WITH WIRE TIE 8343-04-000.
 - 2 SEE BATTERY INSTL. FOR ADDITIONAL INFORMATION.
 - 1. SECURE CONDUIT 41953, TAB AS REQUIRED, OVER ALL WIRES IN CONTACT WITH SHARP EDGES.

FOR ELECTRICAL TORQUE SPECIFICATIONS SEE DWG NO. 128783-01-000

FOR ELECTRICAL CALLOUTS SEE DWG NO. 121339-01-000

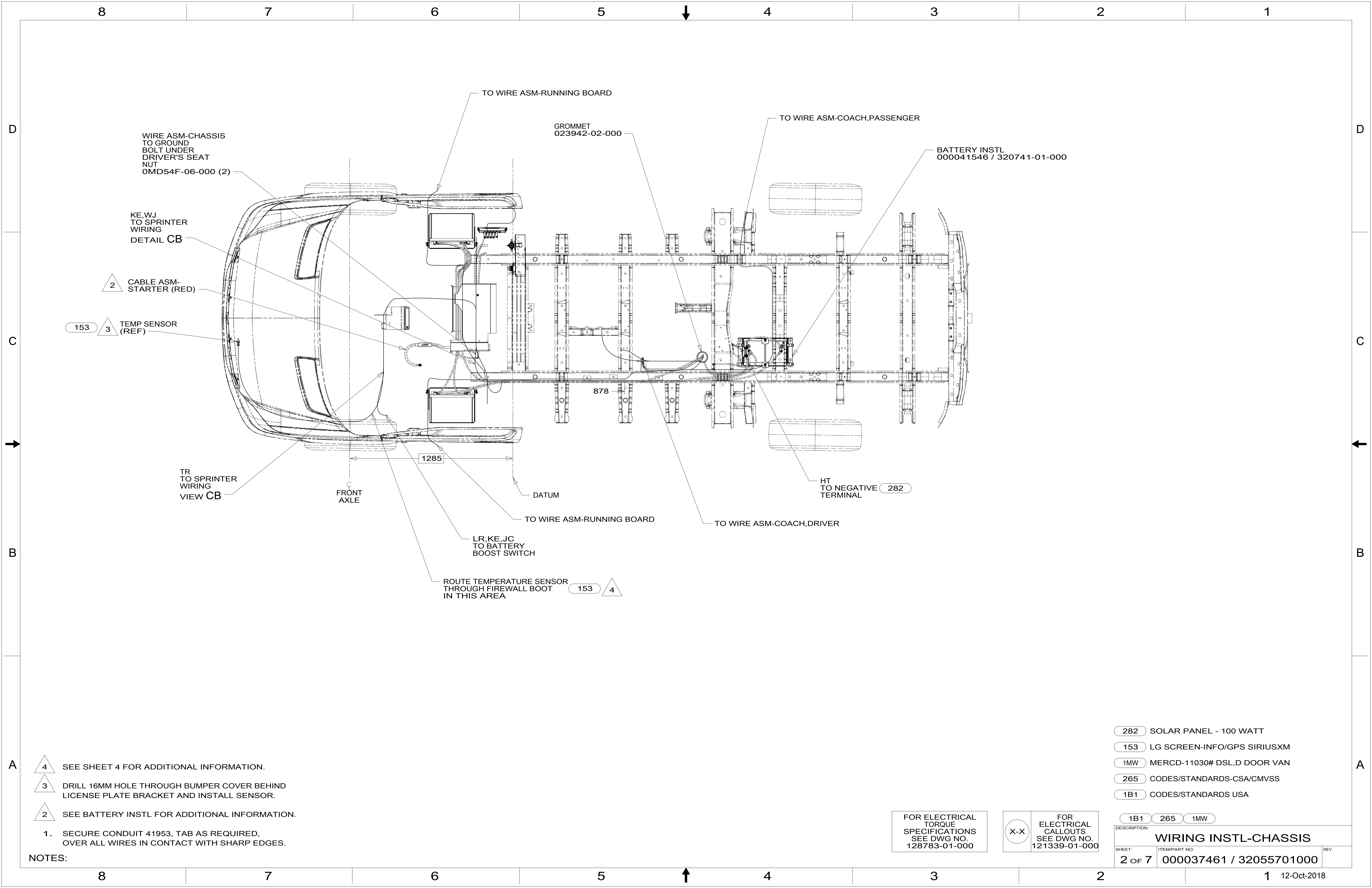
- 1MW MERCD-11030# DSL,D DOOR VAN
- 265 CODES/STANDARDS-CSA/CMVSS
- 1B1 CODES/STANDARDS USA

1B1 265 1MW

WINNEBAGO
COPYRIGHT 2016 WINNEBAGO INDUSTRIES, INC.

DSNR:	ALL DIMENSIONS ARE IN MILLIMETERS	
DFFR:		
UNSPECIFIED TOLERANCES:	MATERIAL:	
WHOLE DIM (X) :		
ONE-PLACE (X.X) :		
TWO-PLACE (X.XX) :		
ANGLE :		
REFER TO ES0018 FOR FASTENER TIGHTENING GUIDELINES	WEIGHT: (LBS)	FIRST USED:
		18 B44E
DESCRIPTION: WIRING INSTL-CHASSIS		
SHEET: 1 OF 7	ITEM/PART NO: 000037461 / 32055701000	REV:
REF:		1 12-Oct-2018

8 7 6 5 4 3 2 1



WIRE ASM-CHASSIS
TO GROUND
BOLT UNDER
DRIVER'S SEAT
NUT
0MD54F-06-000 (2)

KE,WJ
TO SPRINTER
WIRING
DETAIL CB

2 CABLE ASM-
STARTER (RED)

153 3 TEMP SENSOR
(REF)

TR
TO SPRINTER
WIRING
VIEW CB

FRONT
AXLE

1285

DATUM

LR,KE,JC
TO BATTERY
BOOST SWITCH

ROUTE TEMPERATURE SENSOR
THROUGH FIREWALL BOOT
IN THIS AREA 153 4

GROMMET
023942-02-000

TO WIRE ASM-COACH,PASSENGER

BATTERY INSTL
000041546 / 320741-01-000

878

HT
TO NEGATIVE
TERMINAL 282

TO WIRE ASM-COACH,DRIVER

TO WIRE ASM-RUNNING BOARD

TO WIRE ASM-RUNNING BOARD

- 4 SEE SHEET 4 FOR ADDITIONAL INFORMATION.
- 3 DRILL 16MM HOLE THROUGH BUMPER COVER BEHIND LICENSE PLATE BRACKET AND INSTALL SENSOR.
- 2 SEE BATTERY INSTL FOR ADDITIONAL INFORMATION.

1. SECURE CONDUIT 41953, TAB AS REQUIRED,
OVER ALL WIRES IN CONTACT WITH SHARP EDGES.

NOTES:

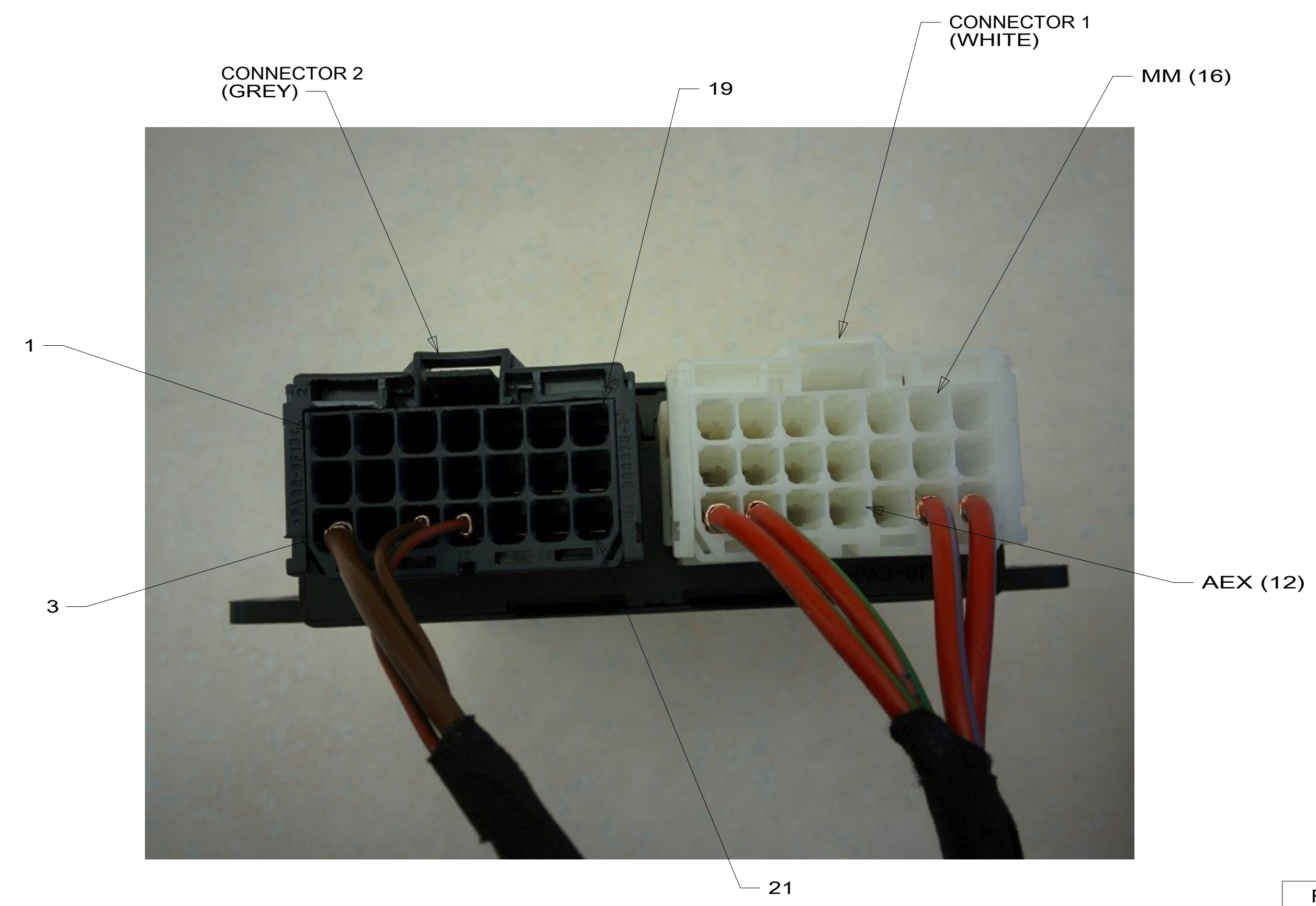
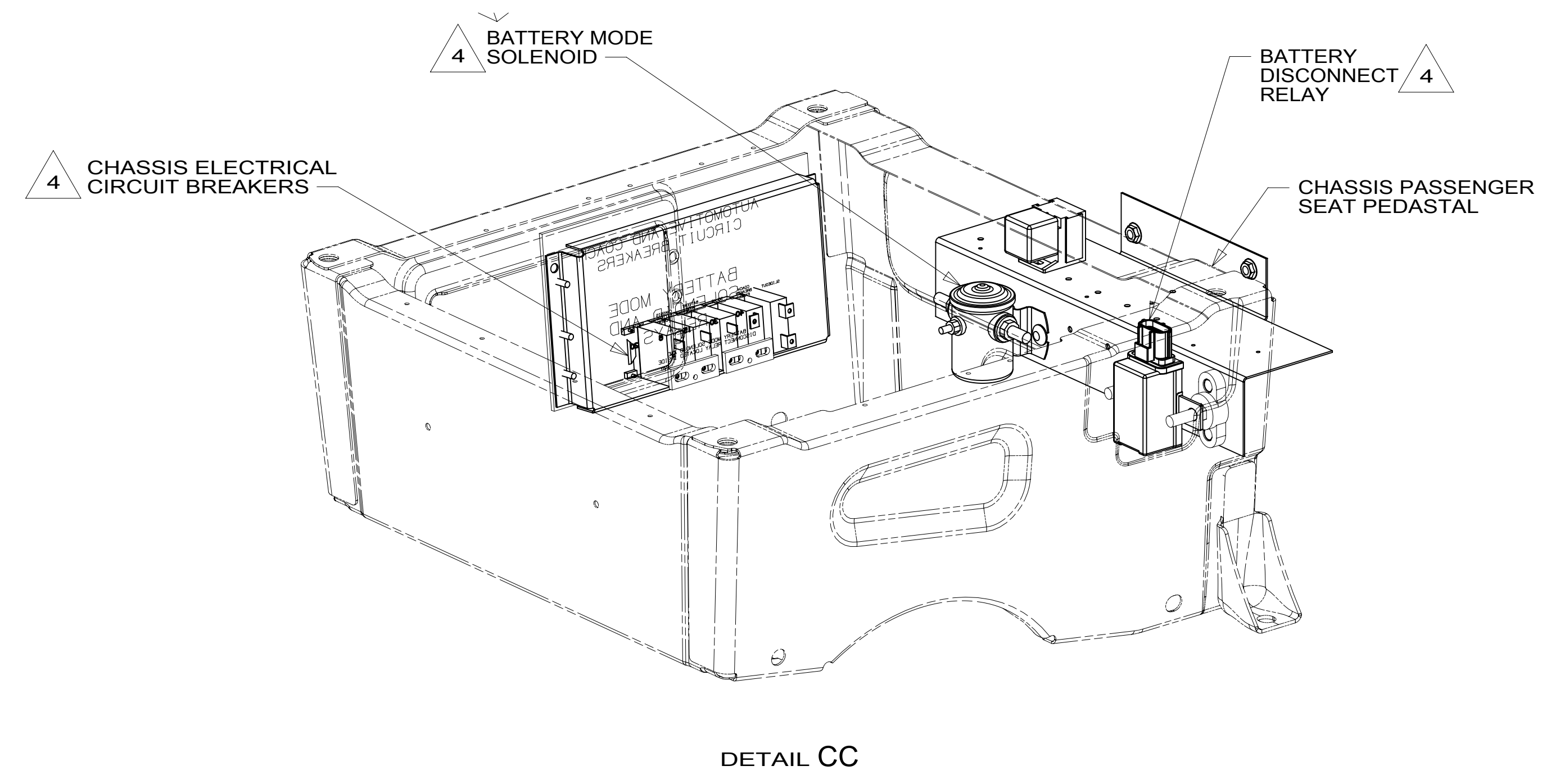
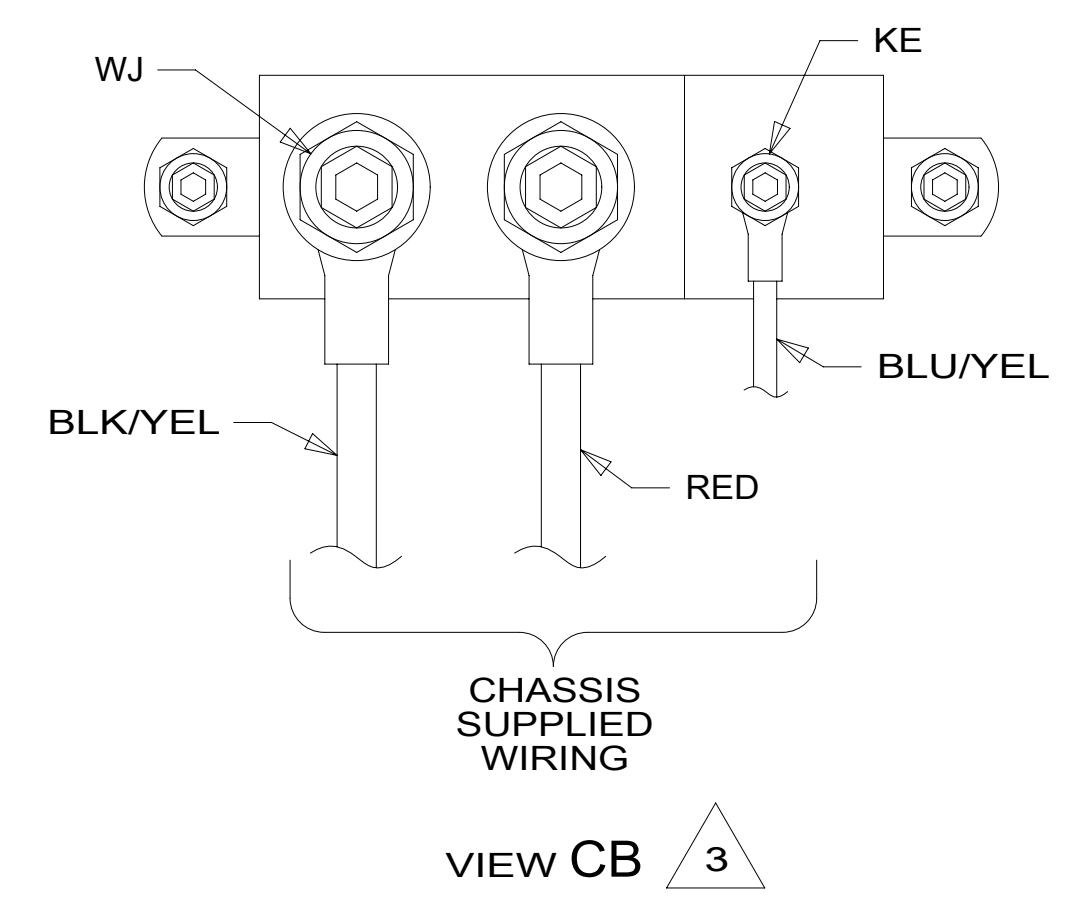
- 282 SOLAR PANEL - 100 WATT
- 153 LG SCREEN-INFO/GPS SIRIUSXM
- 1MW MERCD-11030# DSL,D DOOR VAN
- 265 CODES/STANDARDS-CSA/CMVSS
- 1B1 CODES/STANDARDS USA

FOR ELECTRICAL
TORQUE
SPECIFICATIONS
SEE DWG NO.
128783-01-000

FOR
ELECTRICAL
CALLOUTS
SEE DWG NO.
121339-01-000

DESCRIPTION:	1B1 265 1MW	
WIRING INSTL-CHASSIS		
SHEET:	ITEM/PART NO.:	REV
2 OF 7	000037461 / 32055701000	

8 7 6 5 4 3 2 1



DETAIL CA 2

- NOTES:
- 4 SEE CHASSIS ELECTRICAL BOX ASM FOR ADDITIONAL INFORMATION.
 - 3 CONNECTION POINT IS LOCATED UNDER DRIVERS SEAT.
 - 2 LOCATED UNDER DRIVER'S SEAT.
 - 1. SECURE CONDUIT 41953, TAB AS REQUIRED, OVER ALL WIRES IN CONTACT WITH SHARP EDGES.

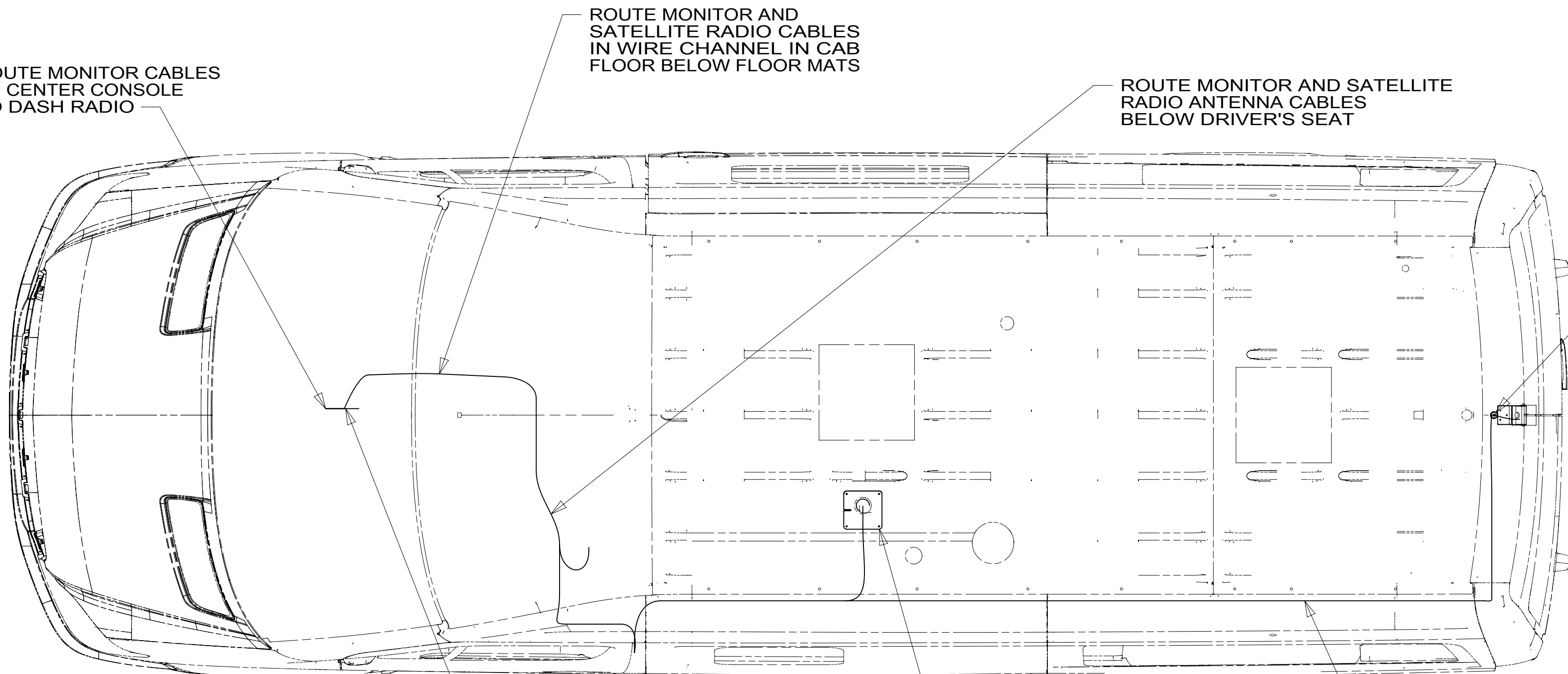
1MW MERCD-11030# DSL,D DOOR VAN
 265 CODES/STANDARDS-CSA/CMVSS
 1B1 CODES/STANDARDS USA

FOR ELECTRICAL TORQUE SPECIFICATIONS SEE DWG NO. 128783-01-000

FOR ELECTRICAL CALLOUTS SEE DWG NO. 121339-01-000

DESCRIPTION: WIRING INSTL-CHASSIS		
SHEET: 3 OF 7	ITEM/PART NO: 000037461 / 32055701000	REV

8 7 6 5 4 3 2 1 12-Oct-2018



ROUTE MONITOR CABLES UP CENTER CONSOLE TO DASH RADIO

ROUTE MONITOR AND SATELLITE RADIO CABLES IN WIRE CHANNEL IN CAB FLOOR BELOW FLOOR MATS

ROUTE MONITOR AND SATELLITE RADIO ANTENNA CABLES BELOW DRIVER'S SEAT

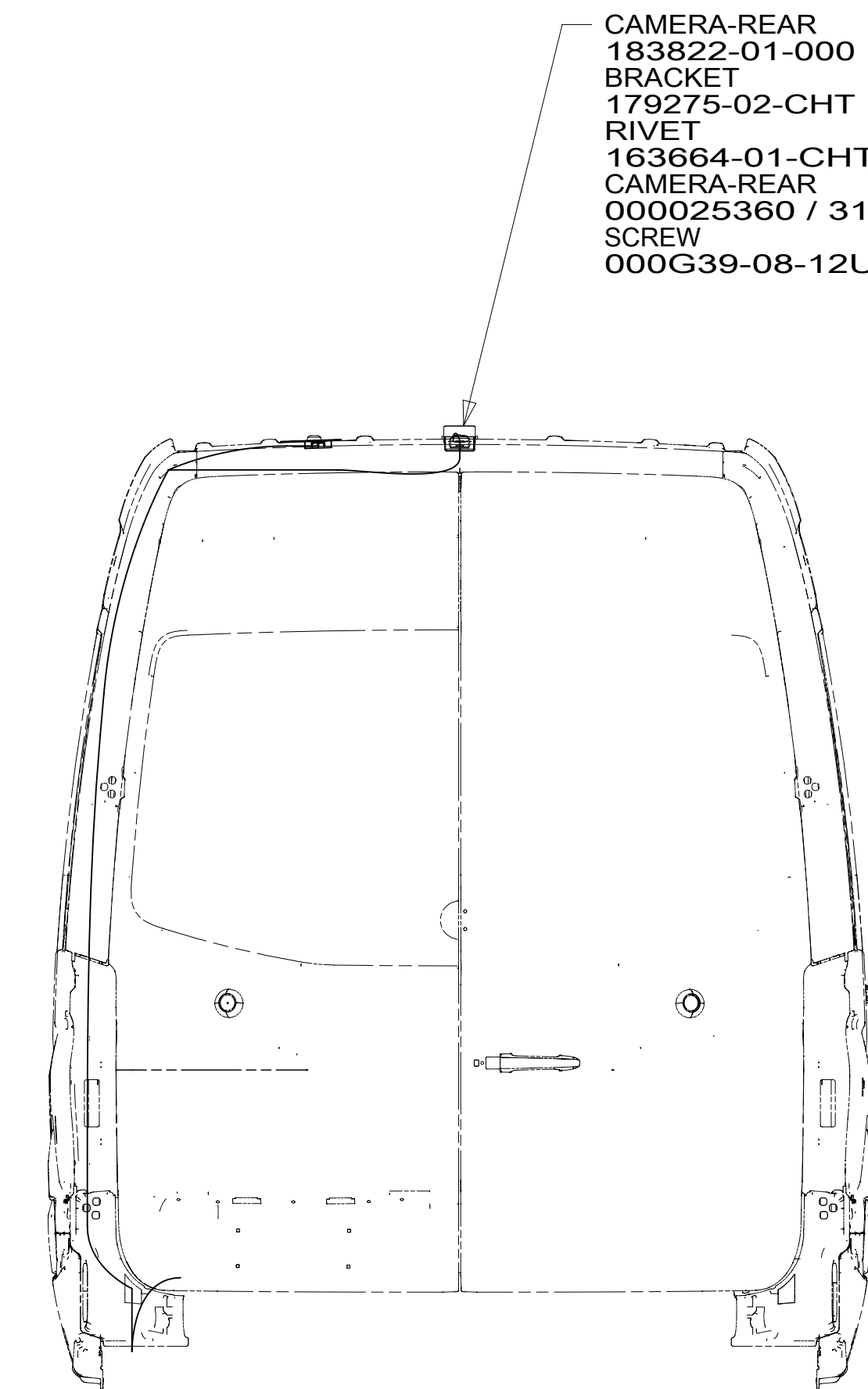
GROMMET 71015-44-000 19R SEAL

CABLE-MONITOR 183822-02-000 19R
000025362 / 315260-01-000 153

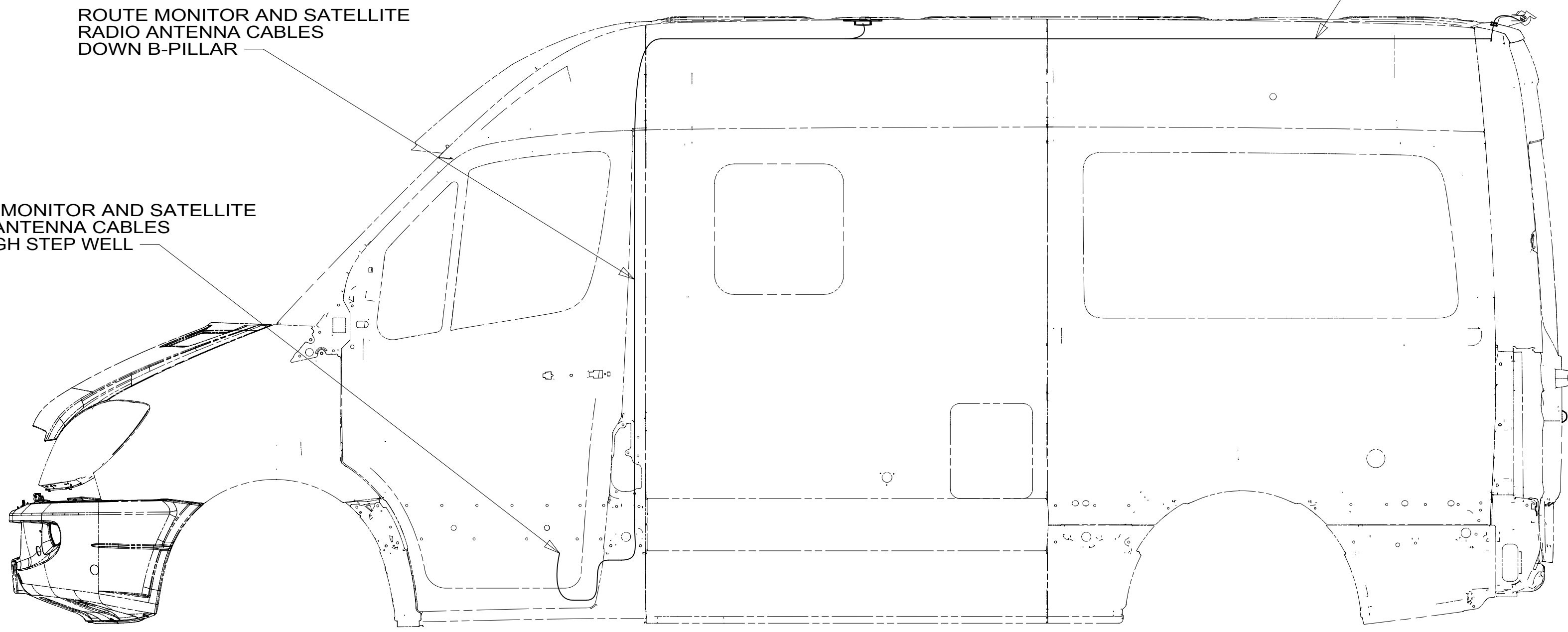
ROUTE SATELLITE ANTENNA CABLE UP CENTER CONSOLE TO DASH RADIO 153

ANTENNA-SATELLITE RADIO (SUPPLIED WITH SXM RECEIVER) PLATE-SATELLITE PREP 177256-03-CHT SCREW G39-08-08U (4) GROMMET-EDGE LINER 114208-03-000 153

ROUTE MONITOR CABLE ALONG ROOF WITH CHASSIS SUPPLIED WIRING



CAMERA-REAR 183822-01-000 BRACKET 179275-02-CHT RIVET 163664-01-CHT (3) CAMERA-REAR 000025360 / 315258-01-000 SCREW 000G39-08-12U (4) 19R 153



ROUTE MONITOR AND SATELLITE RADIO ANTENNA CABLES DOWN B-PILLAR

ROUTE MONITOR AND SATELLITE RADIO ANTENNA CABLES THROUGH STEP WELL

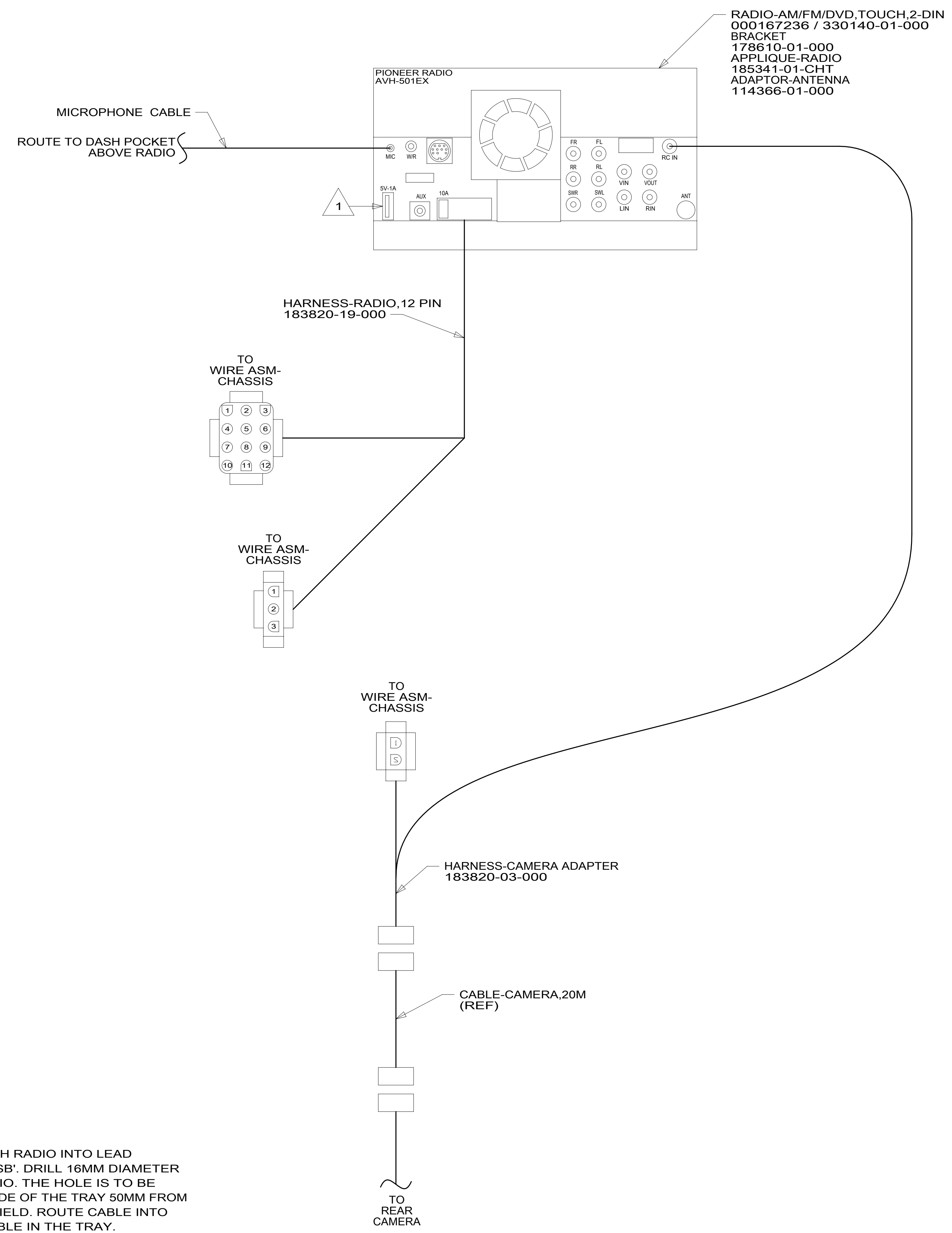
- 153 LG SCREEN-INFO/GPS SIRIUSXM
- 19R RADIO/REARVIEW MONITOR SYS
- 1MW MERCD-11030# DSL,D DOOR VAN
- 265 CODES/STANDARDS-CSA/CMVSS
- 1B1 CODES/STANDARDS USA

FOR ELECTRICAL TORQUE SPECIFICATIONS SEE DWG NO. 128783-01-000

FOR ELECTRICAL CALLOUTS SEE DWG NO. 121339-01-000

DESCRIPTION:	1B1 265 1MW	
WIRING INSTL-CHASSIS		
SHEET:	ITEM/PART NO:	REV
4 OF 7	000037461 / 32055701000	

8 7 6 5 4 3 2 1

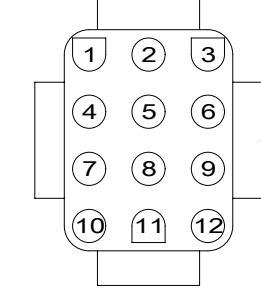


RADIO-AM/FM/DVD, TOUCH, 2-DIN
 000167236 / 330140-01-000
 BRACKET
 178610-01-000
 APPLIQUE-RADIO
 185341-01-CHT
 ADAPTOR-ANTENNA
 114366-01-000

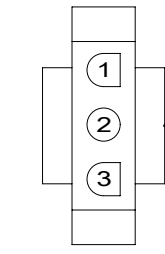
MICROPHONE CABLE
 ROUTE TO DASH POCKET
 ABOVE RADIO

HARNESS-RADIO, 12 PIN
 183820-19-000

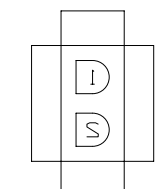
TO WIRE ASM-
 CHASSIS



TO WIRE ASM-
 CHASSIS



TO WIRE ASM-
 CHASSIS



HARNESS-CAMERA ADAPTER
 183820-03-000

CABLE-CAMERA, 20M
 (REF)

TO REAR
 CAMERA

1 PLUG USB CABLE SUPPLIED WITH RADIO INTO LEAD ON BACK OF RADIO MARKED 'USB'. DRILL 16MM DIAMETER HOLE IN THE TRAY ABOVE RADIO. THE HOLE IS TO BE LOCATED ON THE PASSENGER SIDE OF THE TRAY 50MM FROM THE END NEAREST THE WINDSHIELD. ROUTE CABLE INTO TRAY AND LEAVE 200MM OF CABLE IN THE TRAY.

NOTES:

FOR ELECTRICAL TORQUE SPECIFICATIONS SEE DWG NO. 128783-01-000

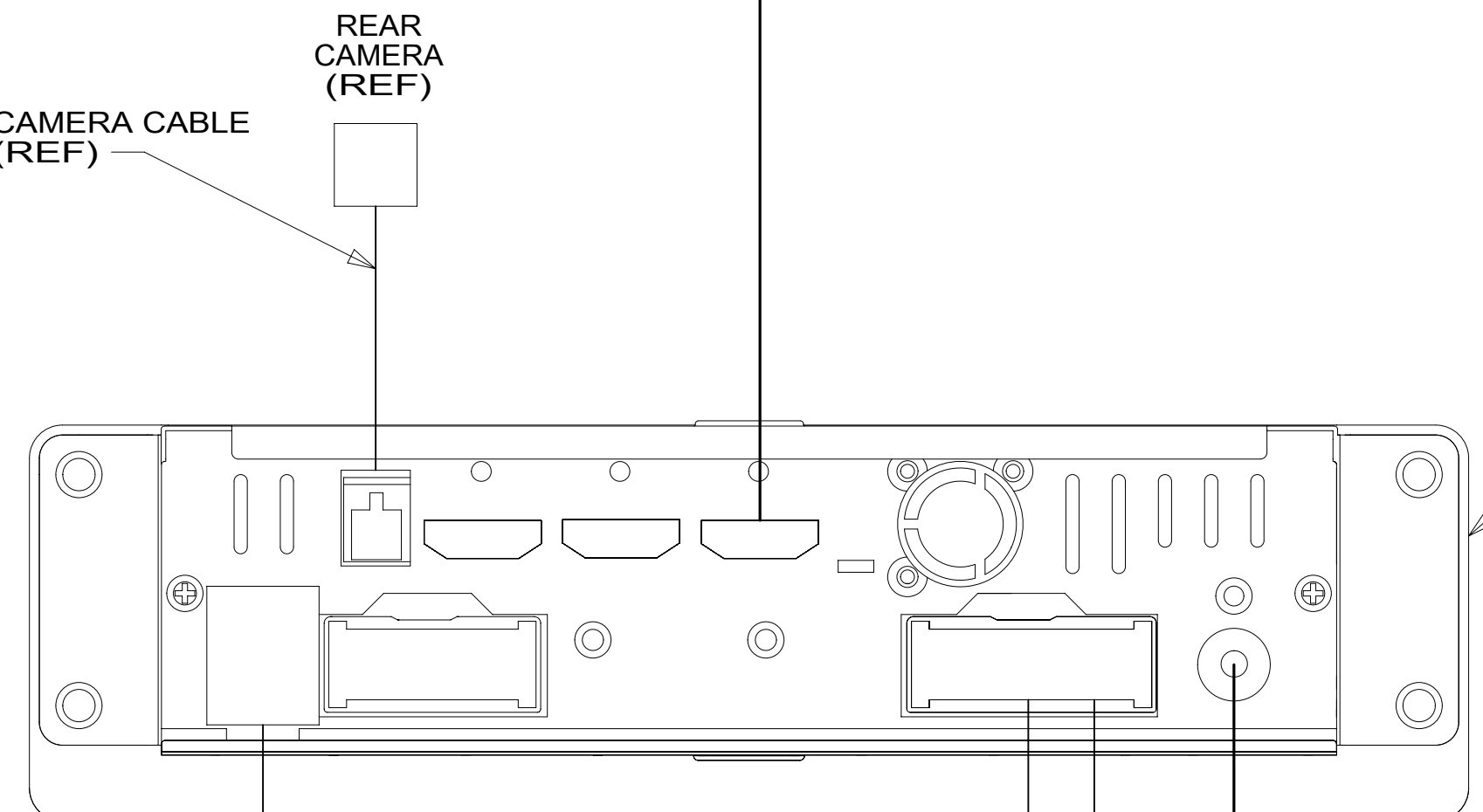
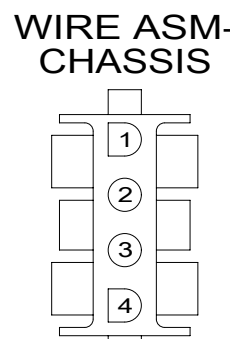
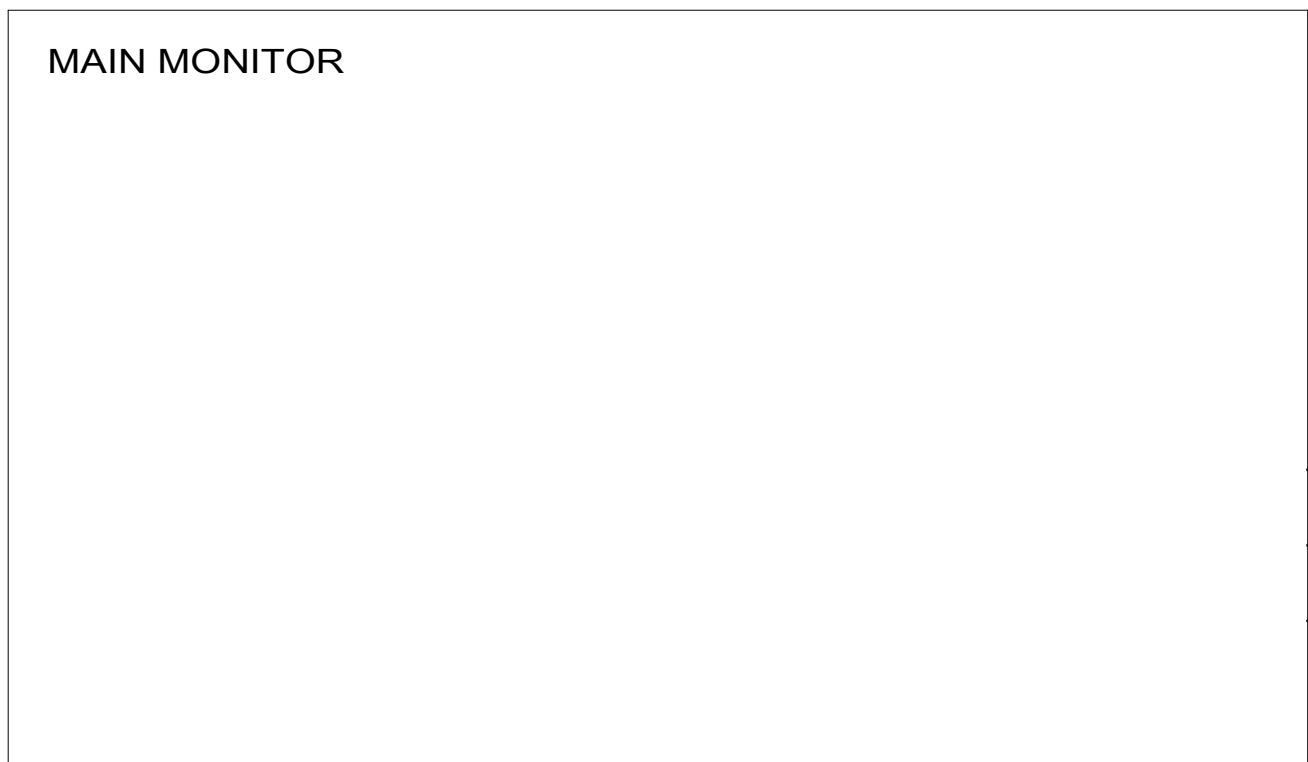
FOR ELECTRICAL CALLOUTS SEE DWG NO. 121339-01-000

- 19R RADIO/REARVIEW MONITOR SYS
- 1MW MERCD-11030# DSL,D DOOR VAN
- 265 CODES/STANDARDS-CSA/CMVSS
- 1B1 CODES/STANDARDS USA

1B1 265 1MW 19R

DESCRIPTION: WIRING INSTL-CHASSIS		
SHEET: 5 OF 7	ITEM/PART NO: 000037461 / 32055701000	REV

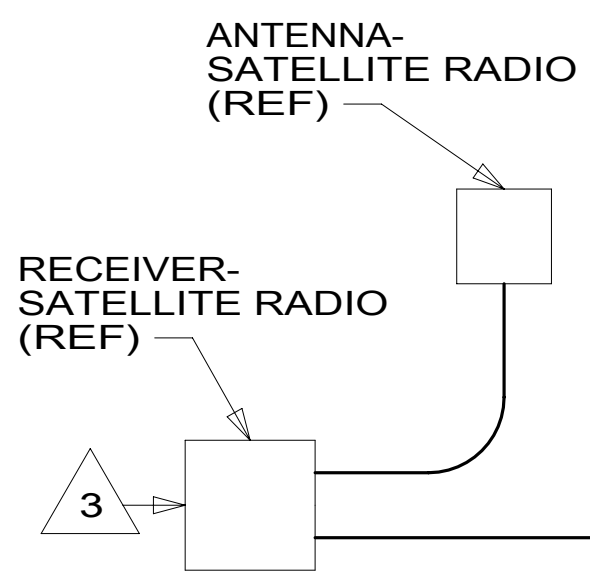
8 7 6 5 4 3 2 1 12-Oct-2018



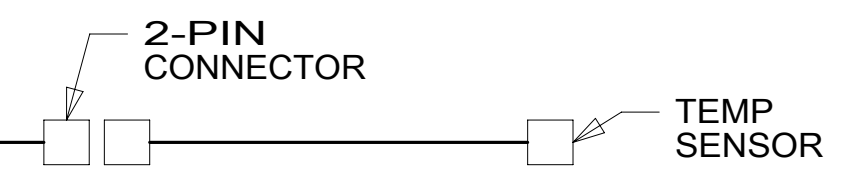
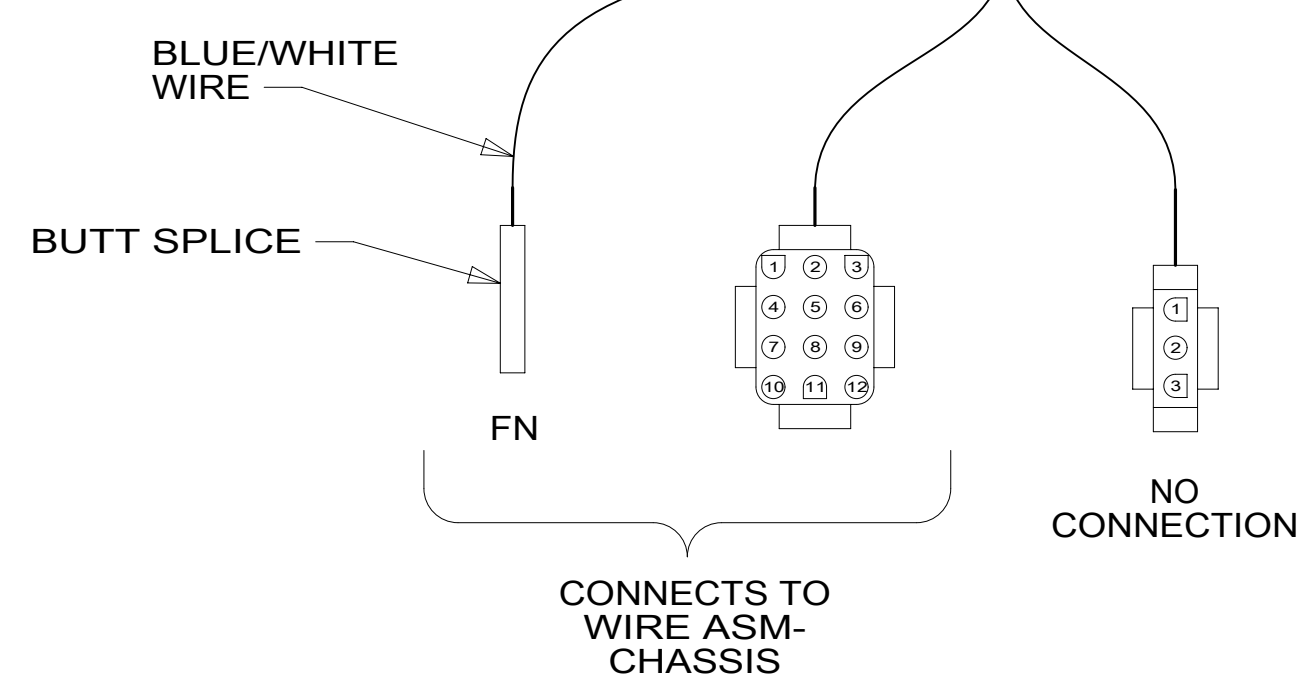
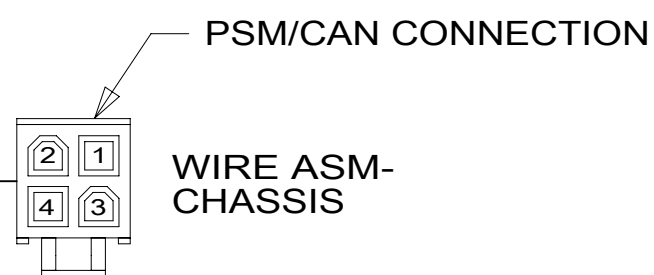
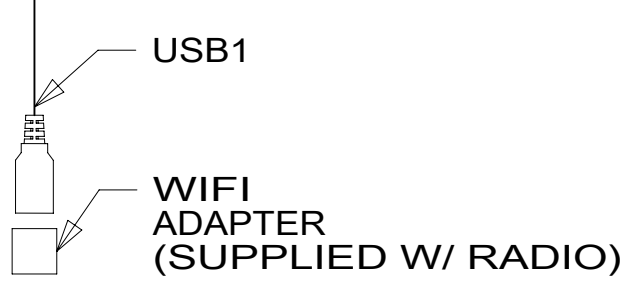
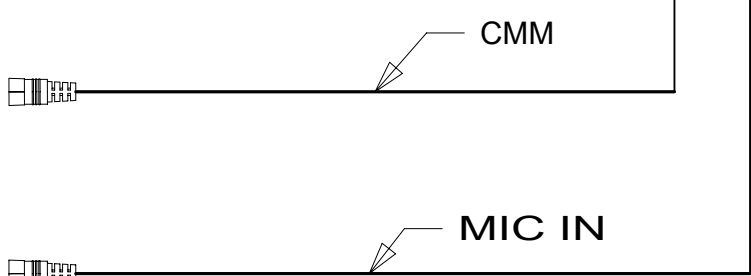
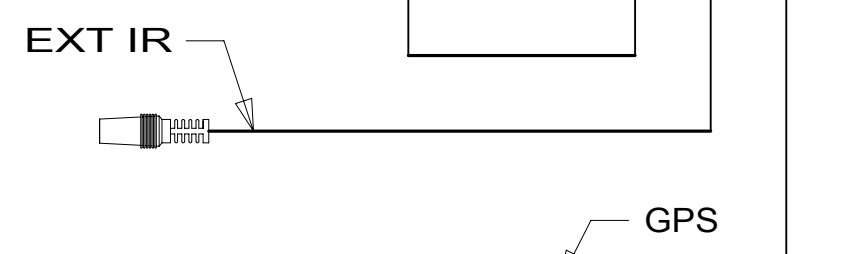
- RADIO-INFOTAINMENT, 9" 000025353 / 315254-01-000
- REMOTE 176654-04-000
- RADIO-KIT, SXM 000111632 / 321635-01-000
- TEMP SENSOR 176654-13-000
- ADAPTOR-ANTENNA 114366-01-000



DETAIL FA



DETAIL FA



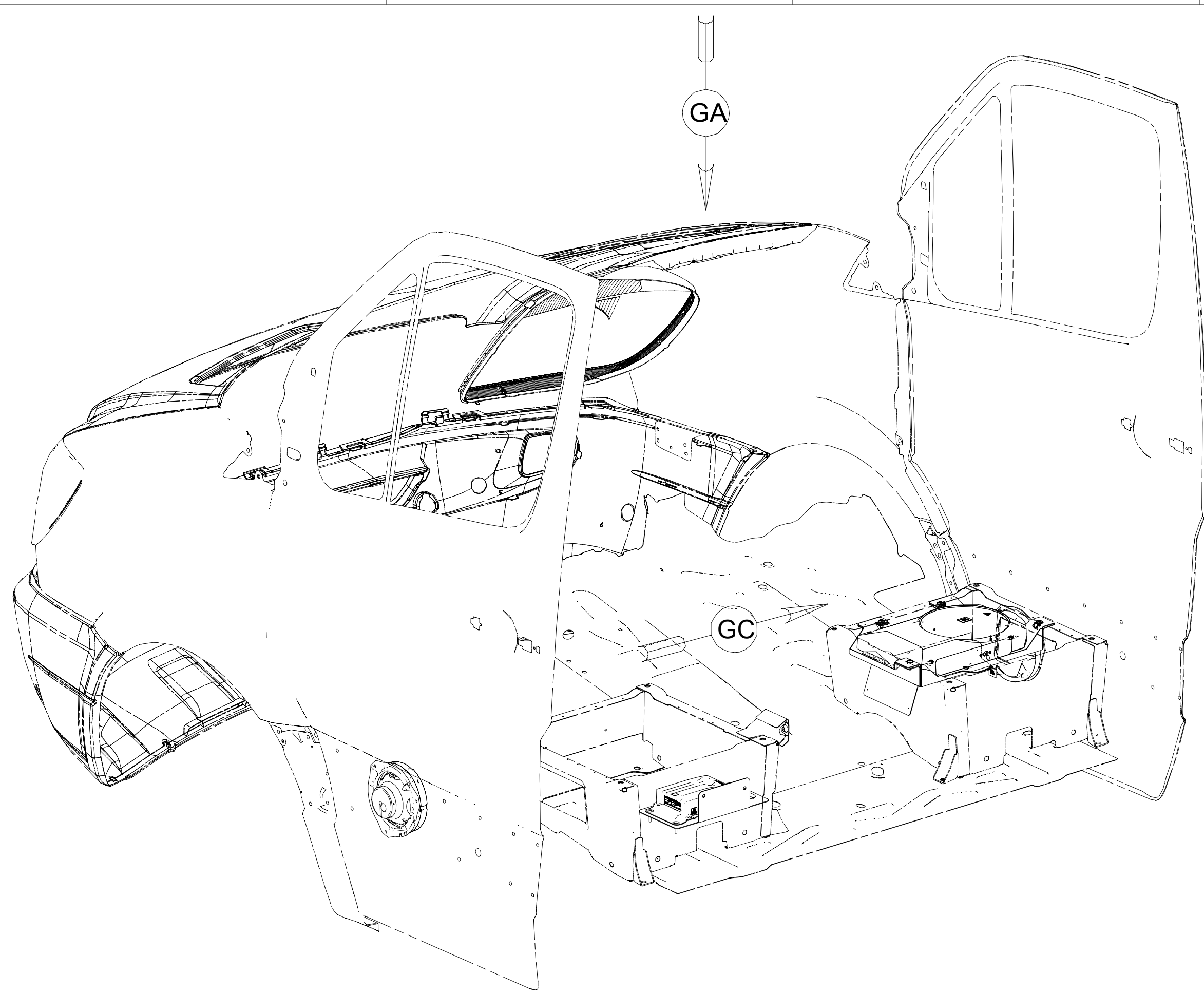
- NOTES:
- 4 WIRE TIE TO DASH RADIO WIRING BEHIND THE RADIO.
 - 3 PLUG CABLE INTO LEAD ON BACK OF RADIO.
 - 2 SEE SHT 2 FOR ADDITIONAL INFORMATION.
 - 1 MOUNT GPS ANTENNA TO TOP OF DEFROST PLENUM BEHIND RADIO.

- 153 LG SCREEN-INFO/GPS SIRIUSXM
- 265 CODES/STANDARDS-CSA/CMVSS
- 1B1 CODES/STANDARDS USA

FOR ELECTRICAL TORQUE SPECIFICATIONS SEE DWG NO. 128783-01-000

FOR ELECTRICAL CALLOUTS SEE DWG NO. 121339-01-000

DESCRIPTION:	1B1 265 153	
WIRING INSTL-CHASSIS		
SHEET:	ITEM/PART NO:	REV
6 OF 7	000037461 / 32055701000	



LOGO-JBL
000209969 / 302951-01-000 (2) 1

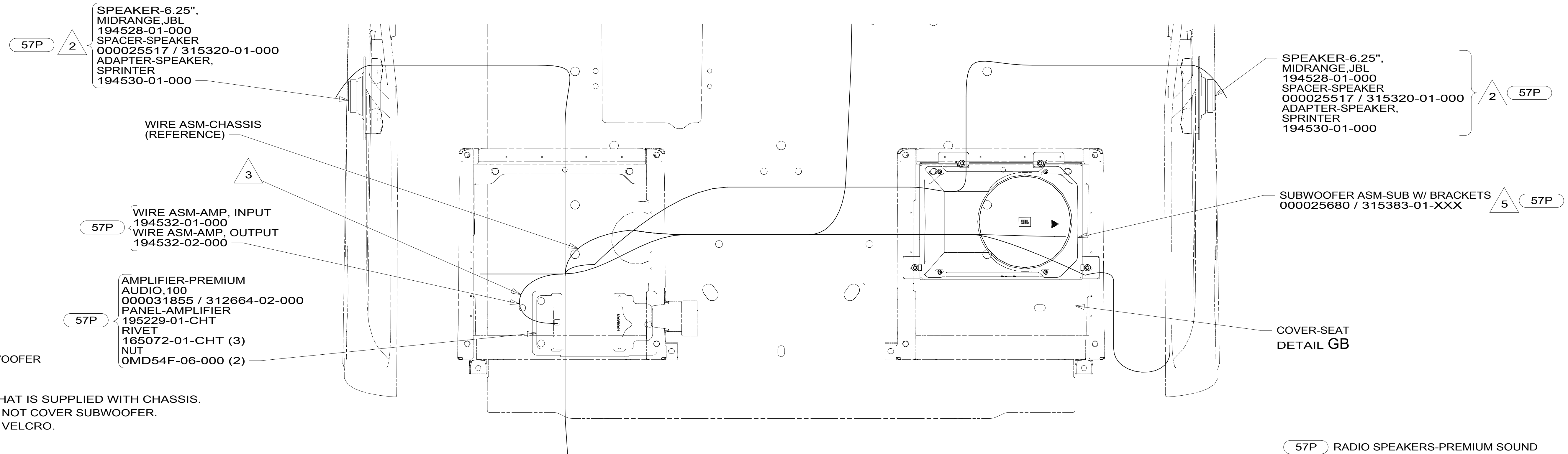
DETAIL GC 57P



VELCRO- 1/2"
088792-08-000 (50 MM)
TAPE
086276-01-000 (2) (50 MM)

VELCRO- 1/2"
088792-08-000 (50 MM)
TAPE
086276-01-000 (2) (50 MM)

DETAIL GB 4 57P



57P 2
SPEAKER-6.25",
MIDRANGE,JBL
194528-01-000
SPACER-SPEAKER
000025517 / 315320-01-000
ADAPTER-SPEAKER,
SPRINTER
194530-01-000

WIRE ASM-CHASSIS
(REFERENCE)

57P 3
WIRE ASM-AMP, INPUT
194532-01-000
WIRE ASM-AMP, OUTPUT
194532-02-000

57P 3
AMPLIFIER-PREMIUM
AUDIO,100
000031855 / 312664-02-000
PANEL-AMPLIFIER
195229-01-CHT
RIVET
165072-01-CHT (3)
NUT
0MD54F-06-000 (2)

2 57P
SPEAKER-6.25",
MIDRANGE,JBL
194528-01-000
SPACER-SPEAKER
000025517 / 315320-01-000
ADAPTER-SPEAKER,
SPRINTER
194530-01-000

5 57P
SUBWOOFER ASM-SUB W/ BRACKETS
000025680 / 315383-01-XXX

COVER-SEAT
DETAIL GB

5 RELOCATE 4WD MODULE TO SUBWOOFER BRACKET WHEN NEEDED.

4 CUT SEAT PEDESTAL COVER THAT IS SUPPLIED WITH CHASSIS. PLACE COVER SO THAT IT DOES NOT COVER SUBWOOFER. SECURE COVER IN PLACE WITH VELCRO.

3 WITH 57P CONNECT 15 PIN HSGS FROM WIRE ASM-CHASSIS TO WIRE ASM-AMP WITHOUT 57P CONNECT 15 PIN HSGS IN WIRE ASM-CHASSIS TOGETHER.

2 REPLACE FACTORY DOOR SPEAKER WITH SPEAKER CALLED OUT.

1 CENTER ON BOTTOM OF SPEAKER GRILL ON DOOR PANEL. CLEAN SURFACE WITH PROMOTER 087211-01-000.

NOTES:

VIEW GA

FOR ELECTRICAL TORQUE SPECIFICATIONS SEE DWG NO. 128783-01-000

FOR ELECTRICAL CALLOUTS SEE DWG NO. 121339-01-000

- 57P RADIO SPEAKERS-PREMIUM SOUND
- 265 CODES/STANDARDS-CSA/CMVSS
- 1B1 CODES/STANDARDS USA

DESCRIPTION: WIRING INSTL-CHASSIS	
SHEET: 7 OF 7	ITEM/PART NO: 000037461 / 32055701000
REV 12-Oct-2018	