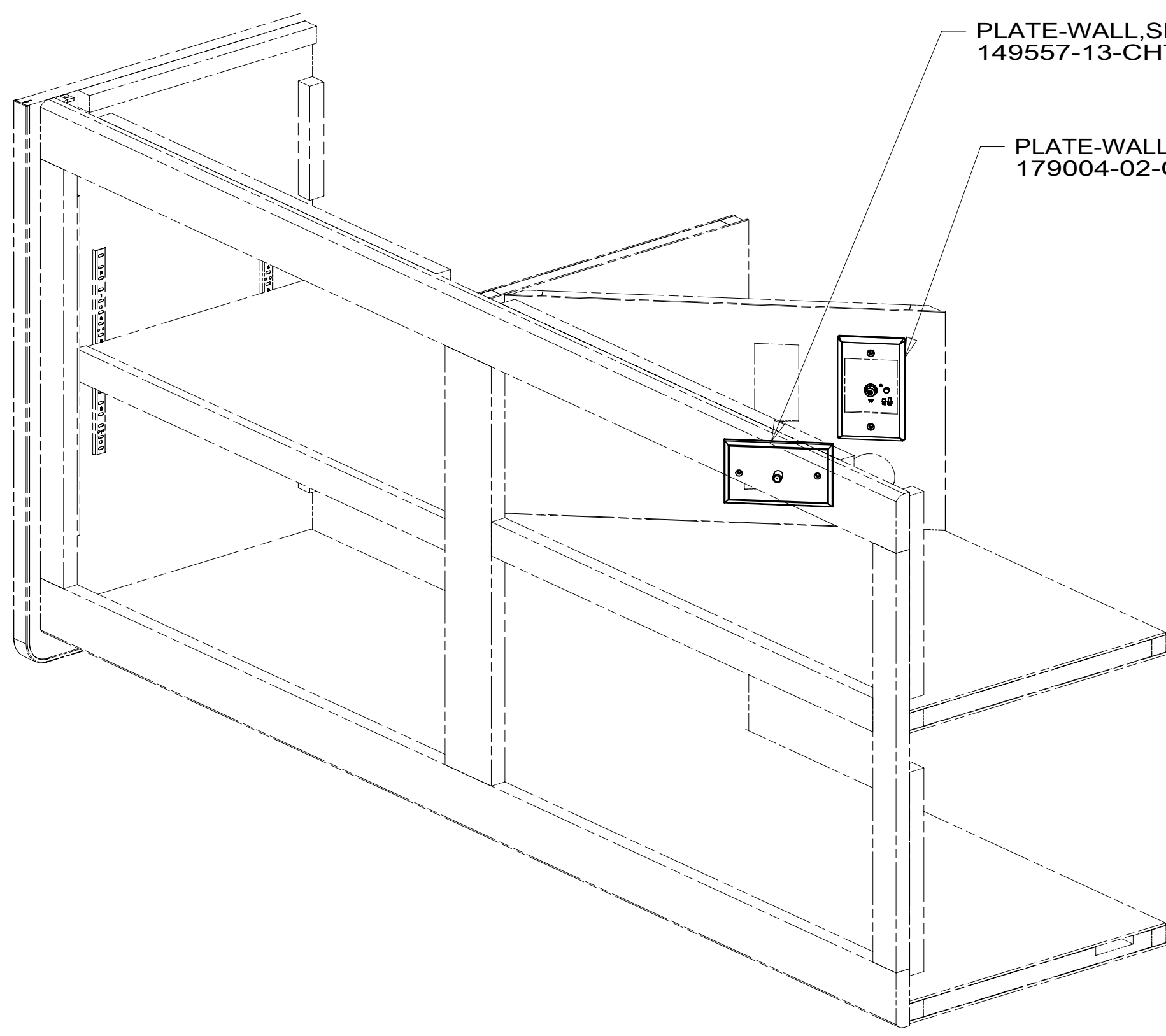
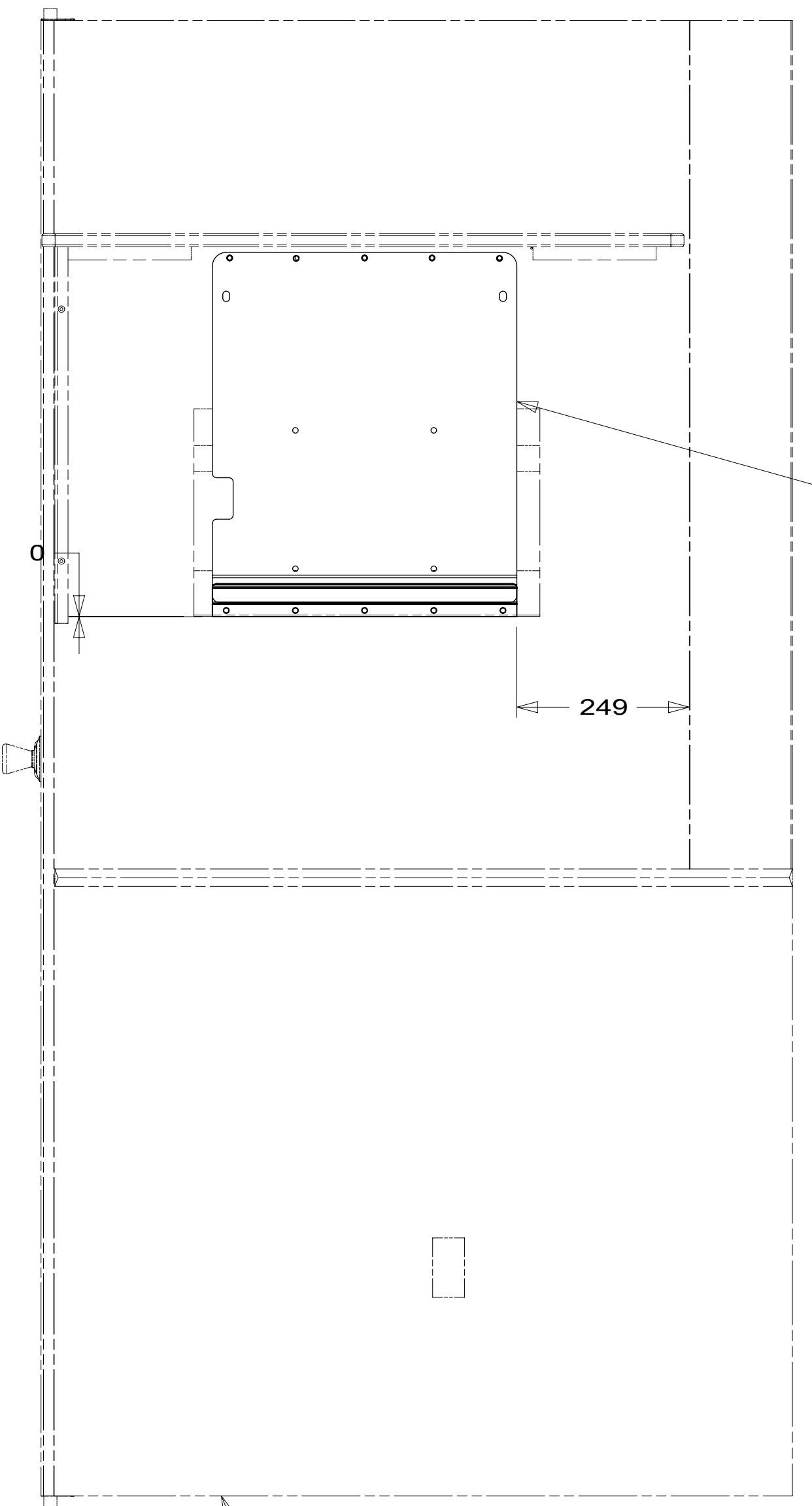
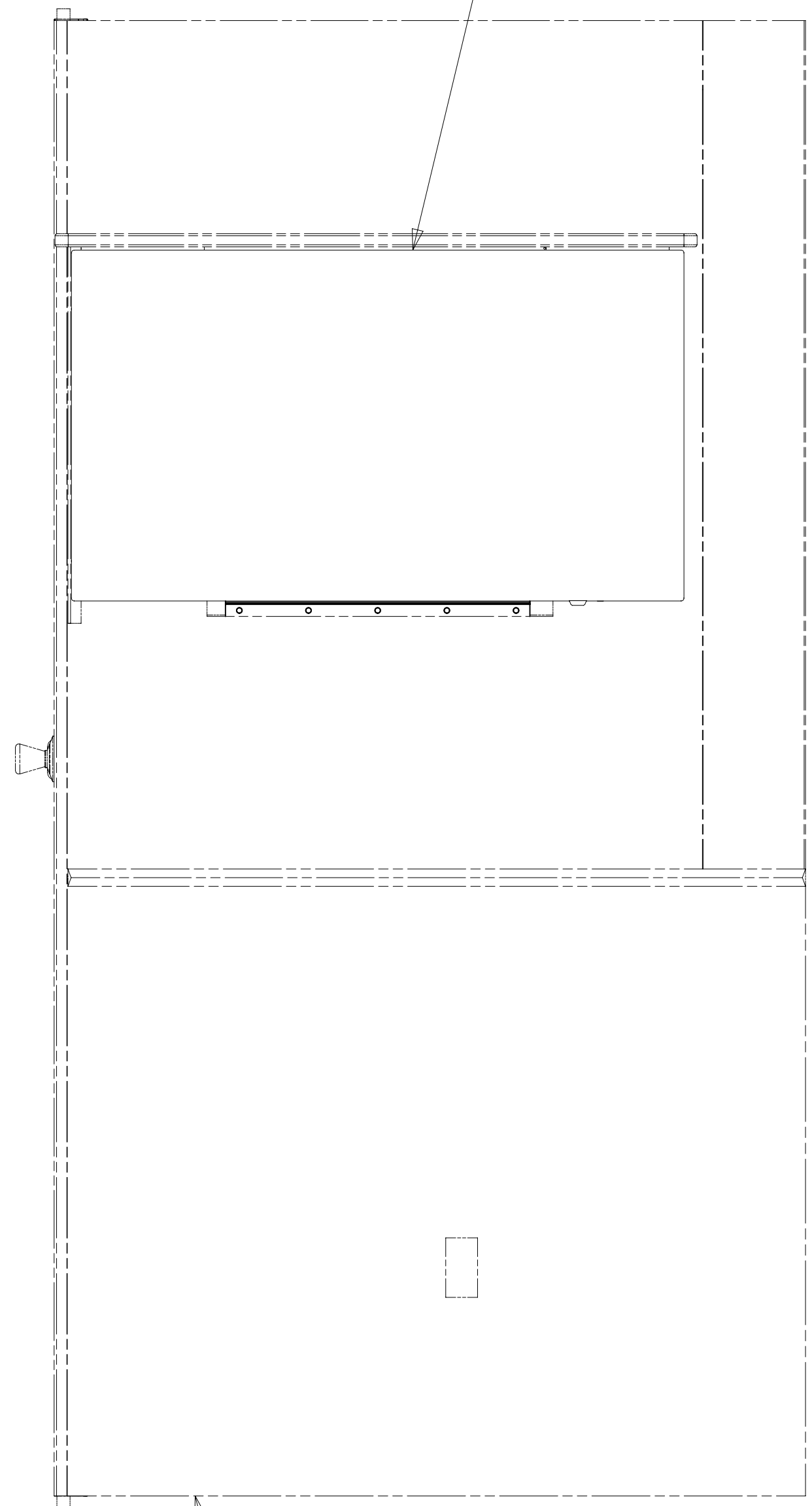


8 7 6 5 4 3 2 1



TV-39" HDTV, INSIGNIA
000167539 / 330141-01-000
SCREW
0MG02U-06-016 (4)



BRACKET-MNTG,TV,39"INSIG
000167840 / 330194-01-CHT
SCREW
G11-08-12U (5)
CLIP-TRIM
130034-08-CHT
SCREW
G11-08-12U (5)

(SHOWN WITHOUT TV)

2. ALL WIRES TO BE SECURED WITH CLAMP 10495-01-000 OR CLIP 80734-01-000 EVERY 600MM. USE SCREW G67-10-12U UNLESS OTHERWISE SPECIFIED.

1. WHERE WIRES PASS THROUGH HOLES IN STEEL AND NOT OTHERWISE PROTECTED, USE GROMMET 92908-02-000.

NOTES:

- 68Y TV - MAIN
- 265 CODES/STANDARDS-CSA/CMVSS
- 1B1 CODES/STANDARDS USA

1B1 265 68Y



DSNR:	ALL DIMENSIONS ARE IN MILLIMETERS	
DFFR:	MATERIAL:	
UNSPECIFIED TOLERANCES:		
WHOLE DIM (X) :	3	
ONE-PLACE (X.X) :	1.5	
TWO-PLACE (X.XX) :	0.50	
ANGLE :	1°	
REFER TO ES0018 FOR FASTENER TIGHTENING GUIDELINES	WEIGHT: (LBS)	FIRST USED:
		18 V30R

FOR ELECTRICAL TORQUE SPECIFICATIONS SEE DWG NO. 128783-01-000

FOR ELECTRICAL CALLOUTS SEE DWG NO. 121339-01-000

DESCRIPTION:
WIRING INSTL-TV/DVD

SHEET: 1 OF 4 ITEM/PART NO.: 000037329 / 31851101000 REF: 1 25-Jul-2018

8 7 6 5 4 3 2 1

8 7 6 5 4 3 2 1



D

D

C

C

B

B

A

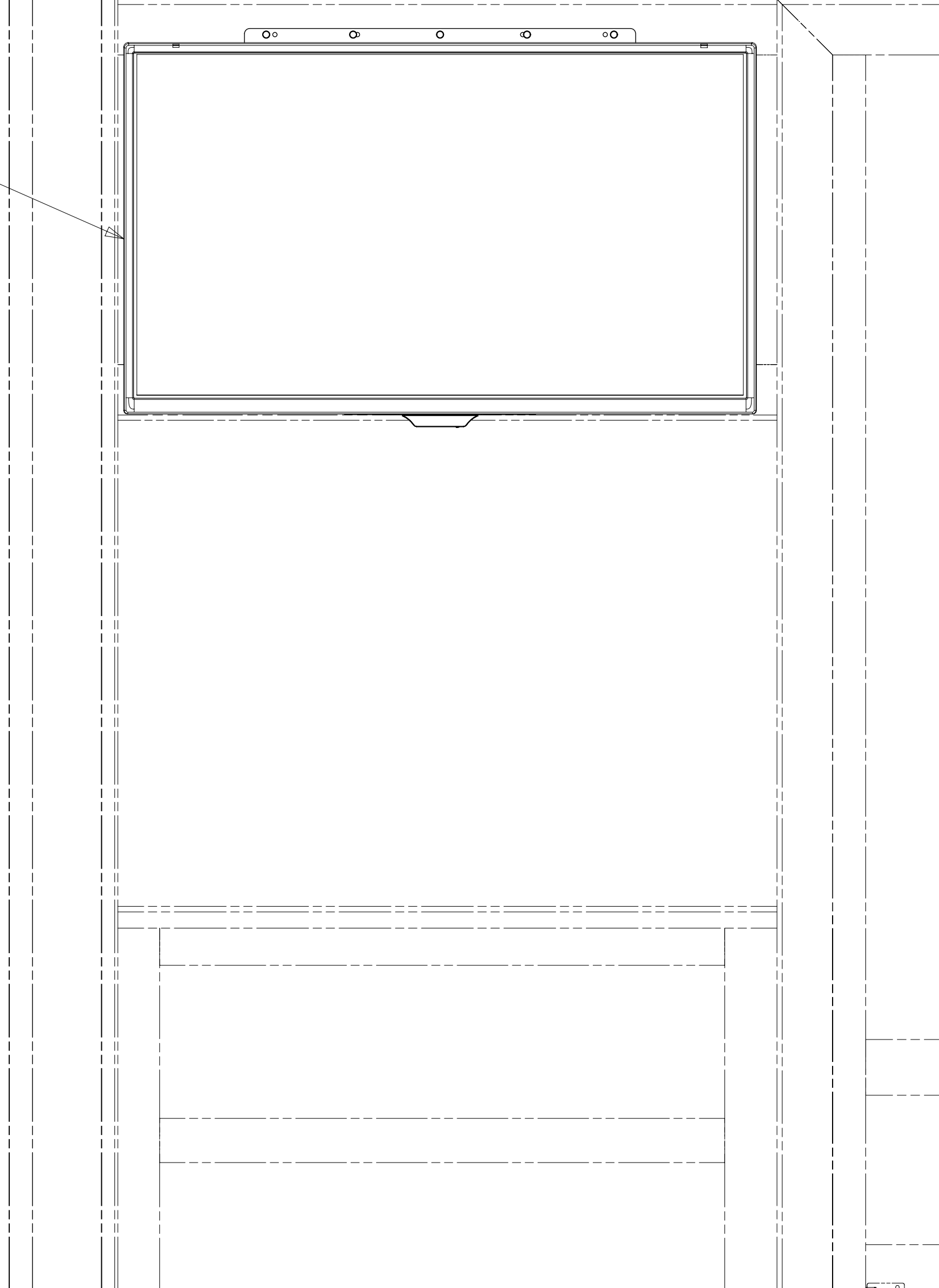
A



TV-32" HDTV
 000125949 / 324307-01-000
 SCREW
 0MG02U-04-012 (4)
 WASHER
 0ME02U-04-071 (4)
 TAPE-FOAM
 076322-22-00 (80 MM) (2)
 076322-23-00 (150 MM)

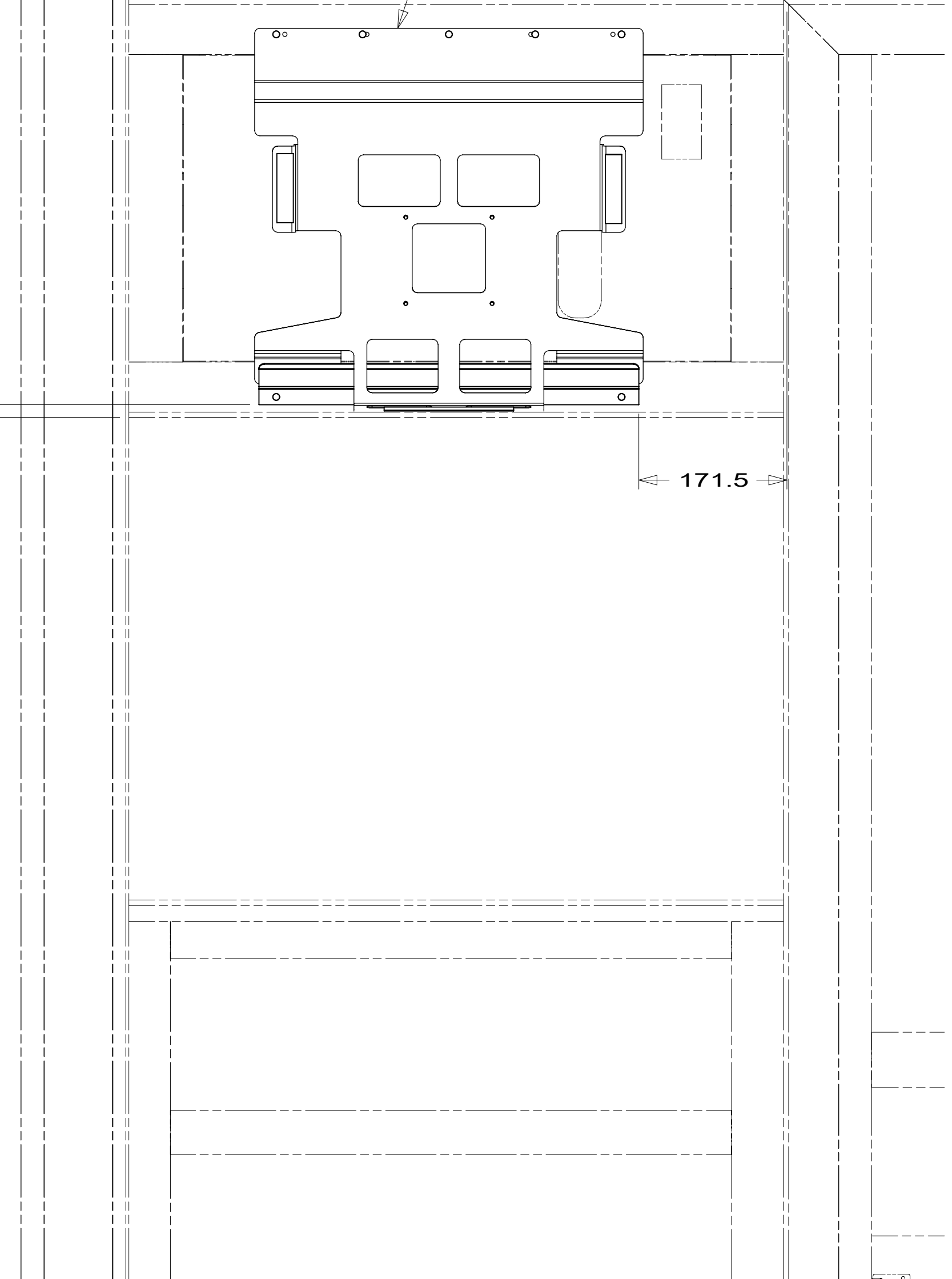
3

BRACKET-TV, 32 INSIG
 000128763 / 325071-01-CHT
 SCREW
 G11-08-12U (5)
 CLIP-TRIM
 130034-08-CHT
 SCREW
 G11-08-12U (5)



14.5

171.5



(TV NOT SHOWN)

3

PREP BOTH SURFACES WITH ADHESIVE-PROMOTER, 087211-01-000.

2. ALL WIRES TO BE SECURED WITH CLAMP 10495-01-000 OR CLIP 80734-01-000 EVERY 600MM. USE SCREW G67-10-12U UNLESS OTHERWISE SPECIFIED.

1. WHERE WIRES PASS THROUGH HOLES IN STEEL AND NOT OTHERWISE PROTECTED, USE GROMMET 92908-02-000.

NOTES:

FOR ELECTRICAL TORQUE SPECIFICATIONS SEE DWG NO. 128783-01-000

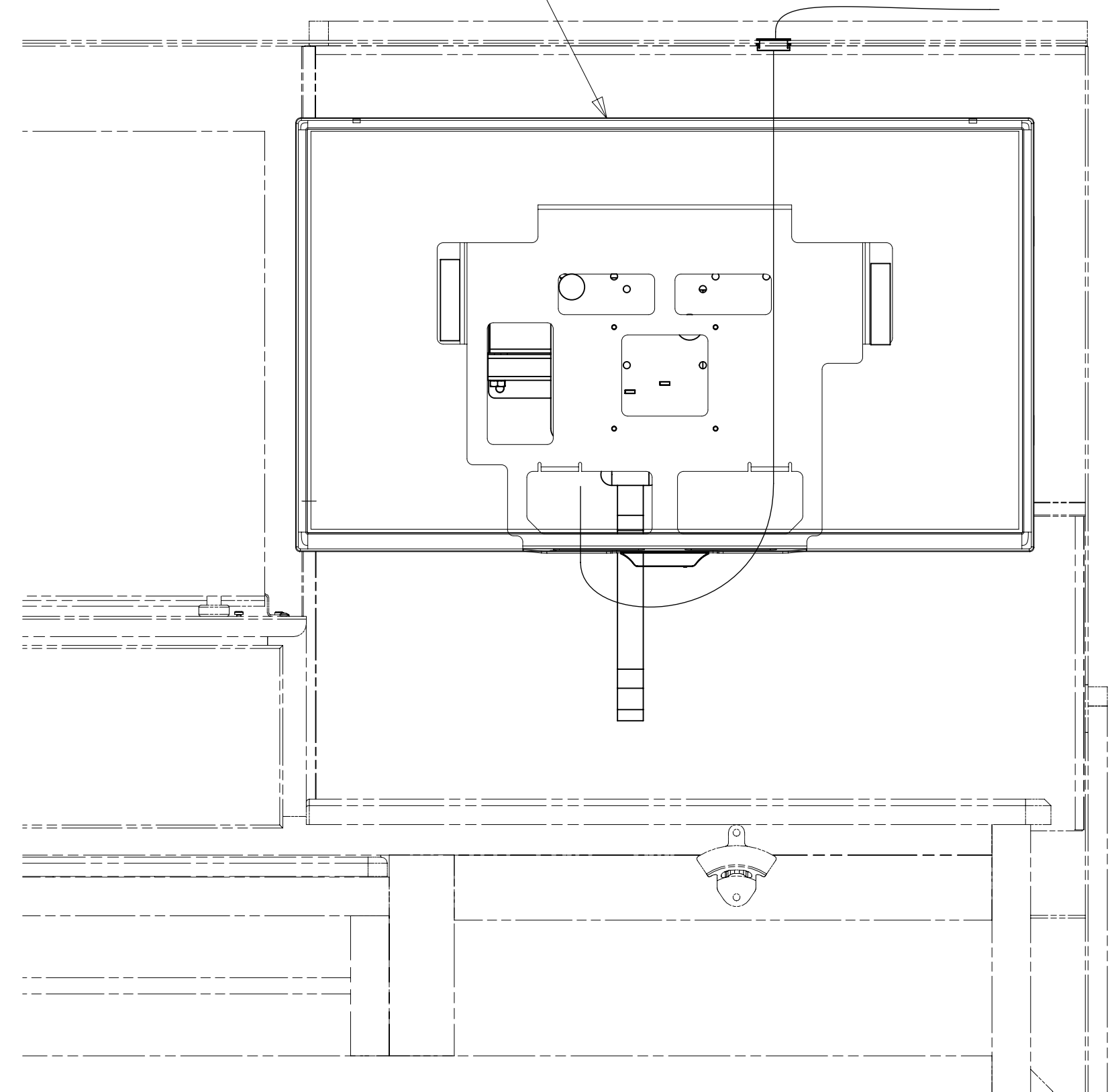
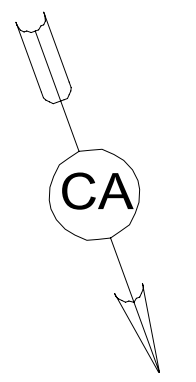
FOR ELECTRICAL CALLOUTS SEE DWG NO. 121339-01-000

- 68X TV - BEDROOM
- 265 CODES/STANDARDS-CSA/CMVSS
- 1B1 CODES/STANDARDS USA

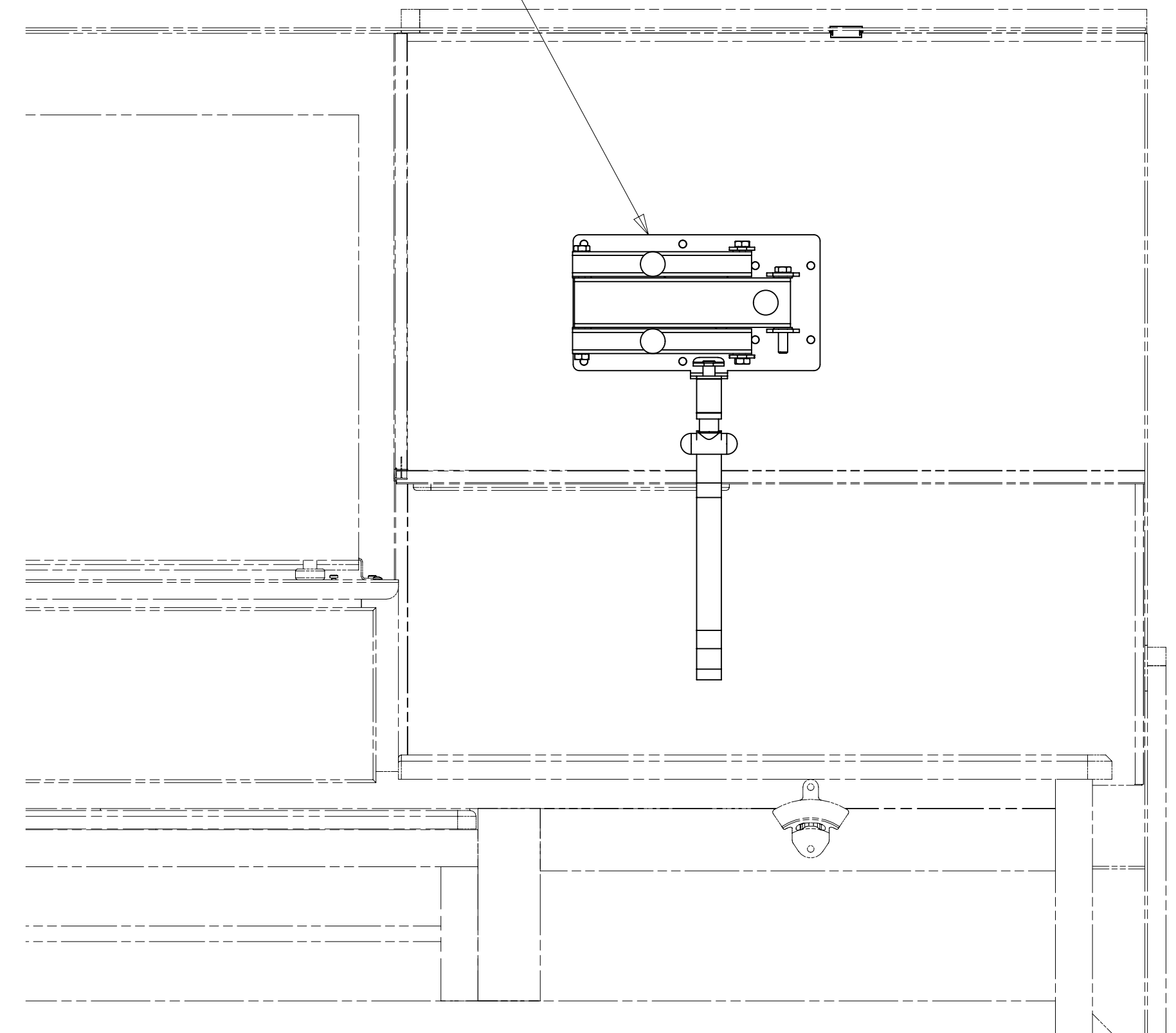
DESCRIPTION:	1B1 265 68X	
WIRING INSTL-TV/DVD		
SHEET:	ITEM/PART NO:	REV
2 OF 4	000037329 / 31851101000	

8 7 6 5 4 3 2 1 25-Jul-2018

TV-32" HDTV
 000125949 / 324307-01-000
 PLATE-MNTNG,TV,32" INSIGNIA
 000127966 / 325048-01-CHT
 SCREW
 OMG02U-04-012 (4)
 WASHER
 E13-10-00U (4)
 TAPE-FOAM
 076322-22-00 (80 MM) (2)
 TAPE-FOAM
 076322-23-00 (150 MM)

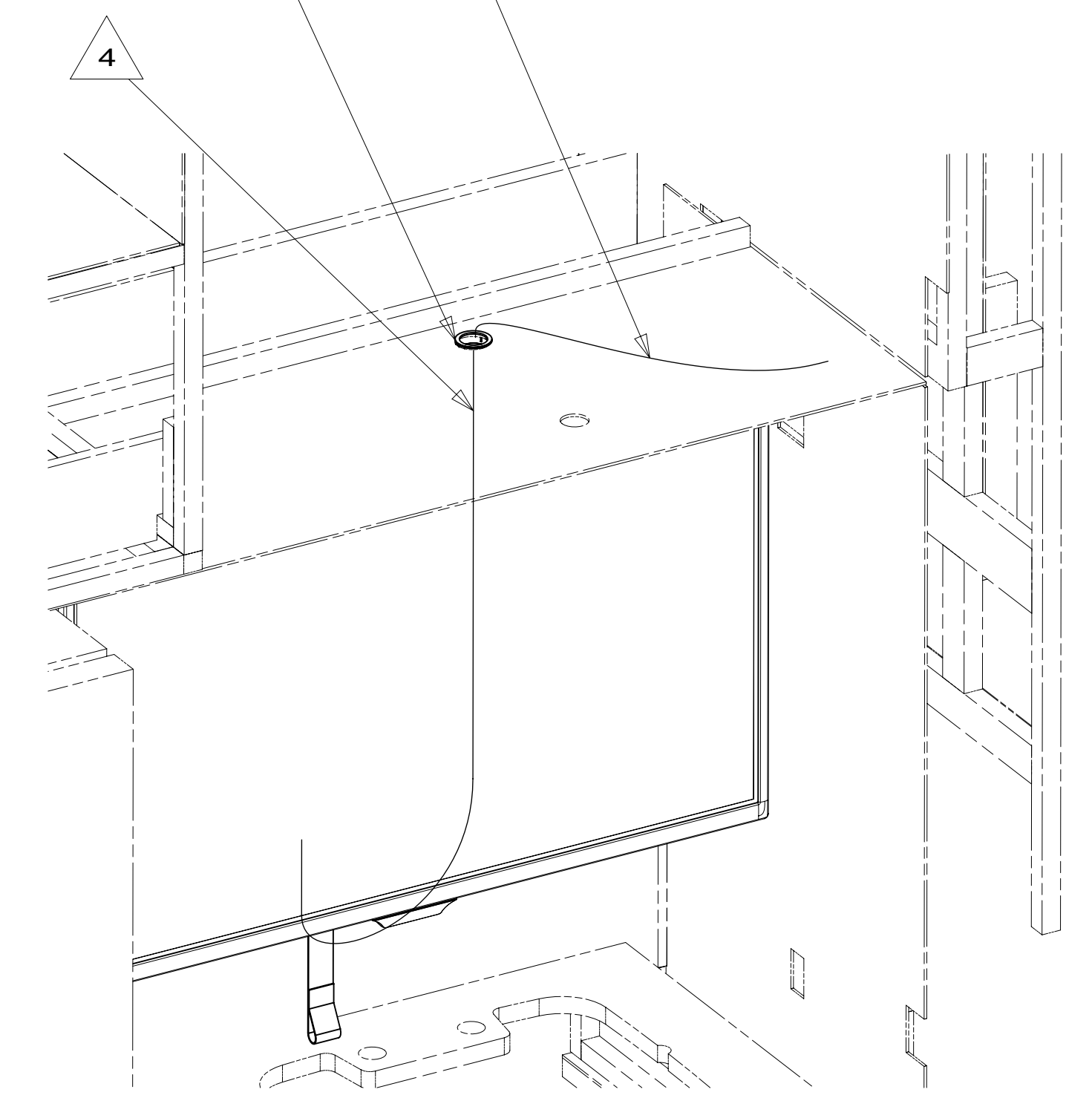


BRACKET-TV SWING MOUNT
 179241-01-CHT
 SCREW
 G11-08-12U (8)



(TV NOT SHOWN)

COAX (YEL)
 (REF)
 GROMMET-EDGE LINER
 114208-07-000



VIEW CA

- 4 ROUTE COAX (YEL) AND TV POWER CORD TOGETHER, COVER WITH MINIMUM POSSIBLE DIAMETER BRAIDED SLEEVING 139049-01, -02, -03-000. SECURE BOTH ENDS WITH TAPE 8363-01-000. TIE CORDS TO TOP OF SWING ARM WITH TIE-WIRE 008343-03-000.
- 3 PREP BOTH SURFACES WITH ADHESIVE-PROMOTER, 087211-01-000.
2. ALL WIRES TO BE SECURED WITH CLAMP 10495-01-000 OR CLIP 80734-01-000 EVERY 600MM. USE SCREW G67-10-12U UNLESS OTHERWISE SPECIFIED.
1. WHERE WIRES PASS THROUGH HOLES IN STEEL AND NOT OTHERWISE PROTECTED, USE GROMMET 92908-02-000.

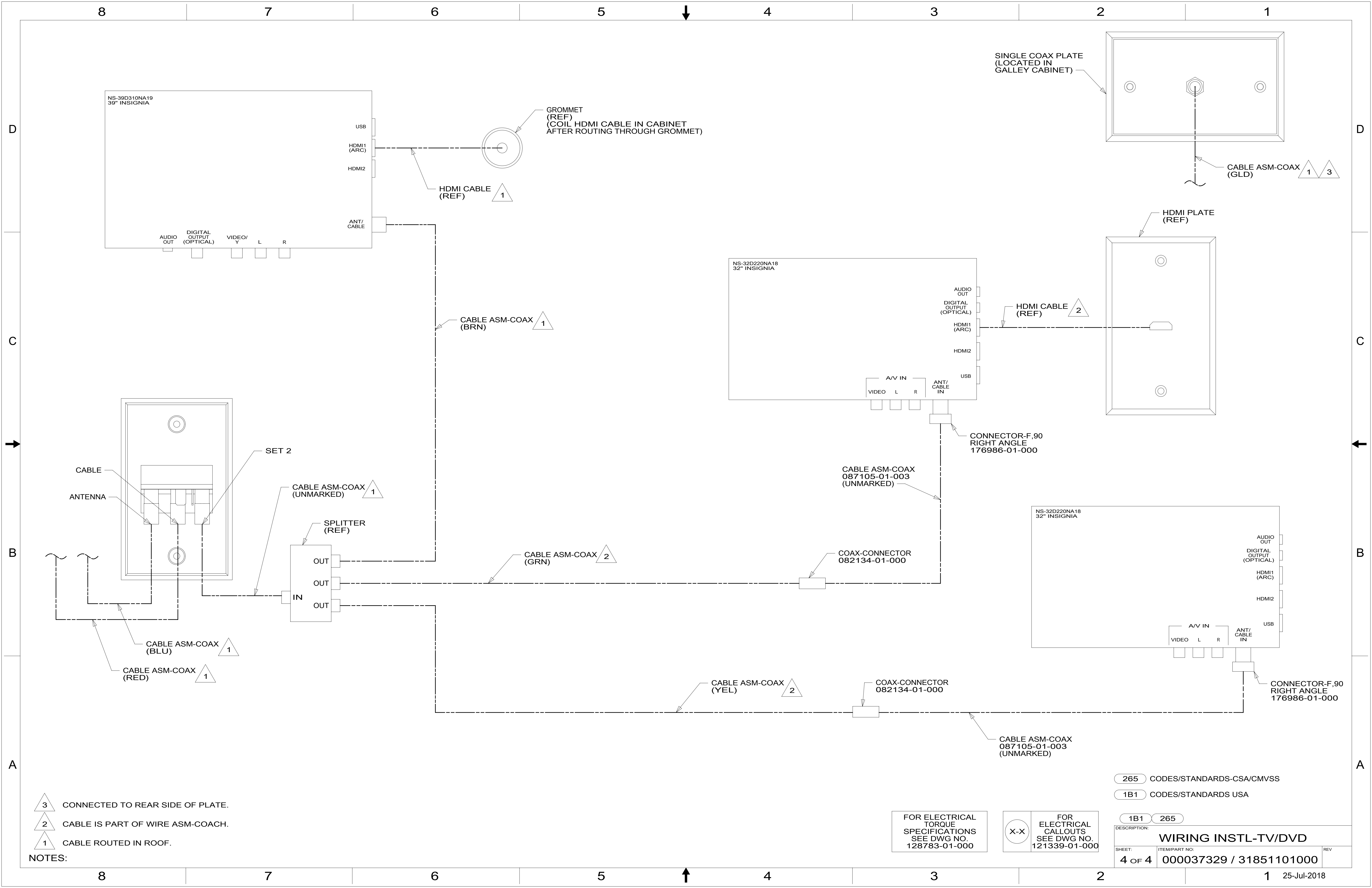
NOTES:

- 9PC TAILGATE PACKAGE
- 265 CODES/STANDARDS-CSA/CMVSS
- 1B1 CODES/STANDARDS USA

FOR ELECTRICAL TORQUE SPECIFICATIONS SEE DWG NO. 128783-01-000

FOR ELECTRICAL CALLOUTS SEE DWG NO. 121339-01-000

DESCRIPTION:	1B1 265 9PC	
WIRING INSTL-TV/DVD		
SHEET:	ITEM/PART NO:	REV
3 OF 4	000037329 / 31851101000	



- NOTES:
- 3 CONNECTED TO REAR SIDE OF PLATE.
 - 2 CABLE IS PART OF WIRE ASM-COAX.
 - 1 CABLE ROUTED IN ROOF.

FOR ELECTRICAL TORQUE SPECIFICATIONS SEE DWG NO. 128783-01-000

FOR ELECTRICAL CALLOUTS SEE DWG NO. 121339-01-000

- 265 CODES/STANDARDS-CSA/CMVSS
- 1B1 CODES/STANDARDS USA

DESCRIPTION: WIRING INSTL-TV/DVD		
SHEET: 4 OF 4	ITEM/PART NO: 000037329 / 31851101000	REV
		25-Jul-2018