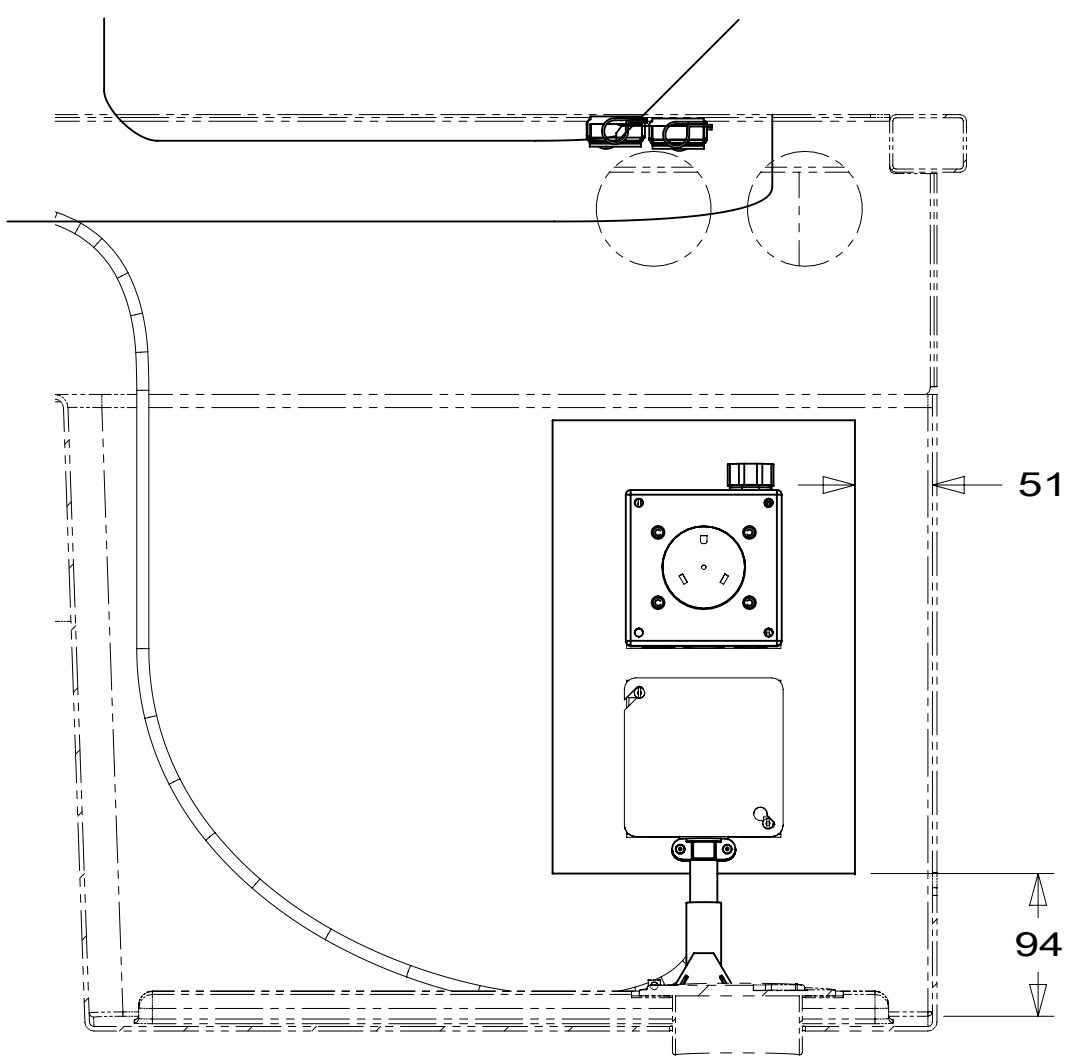
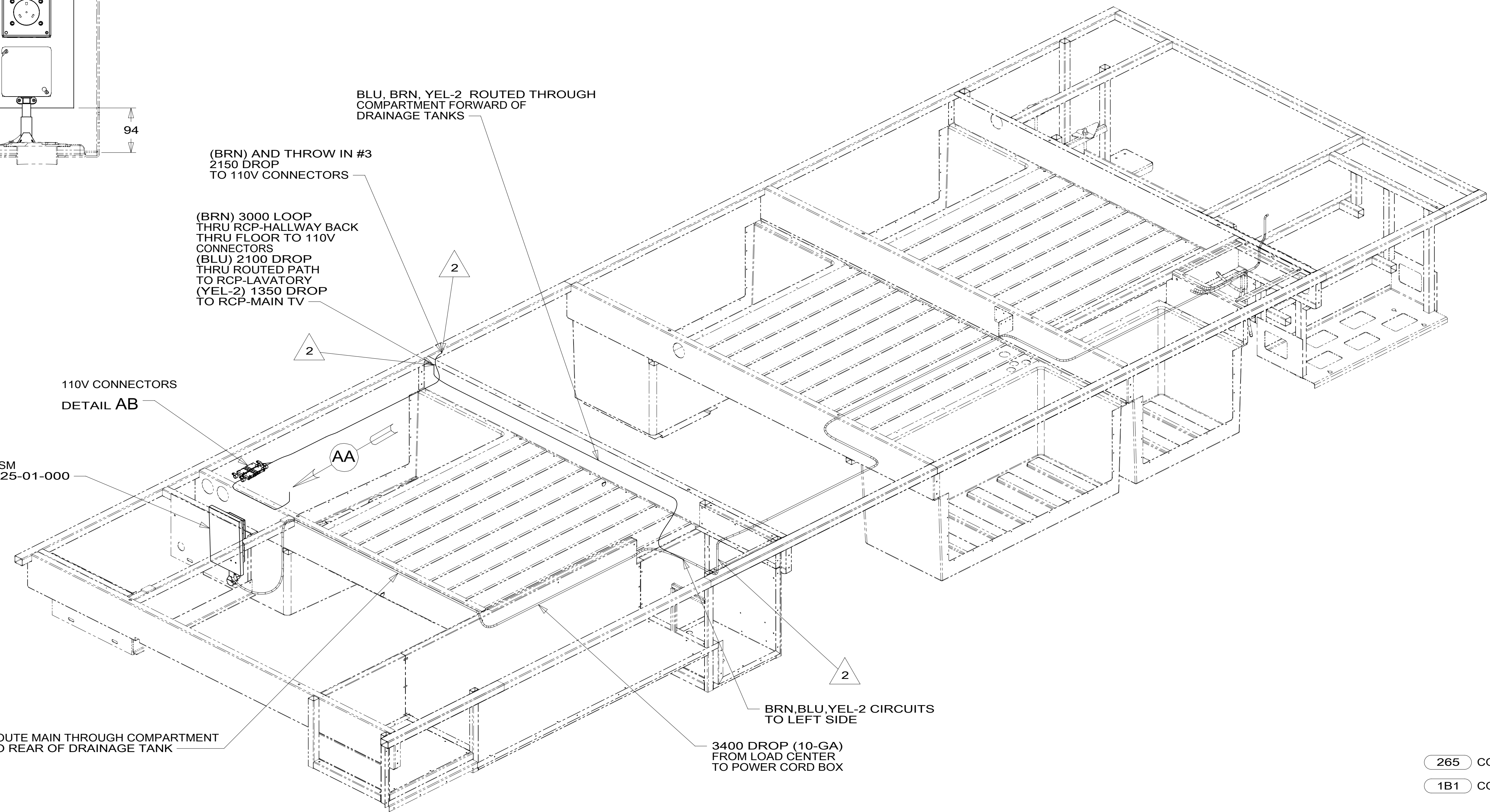


8 7 6 5 4 3 2 1

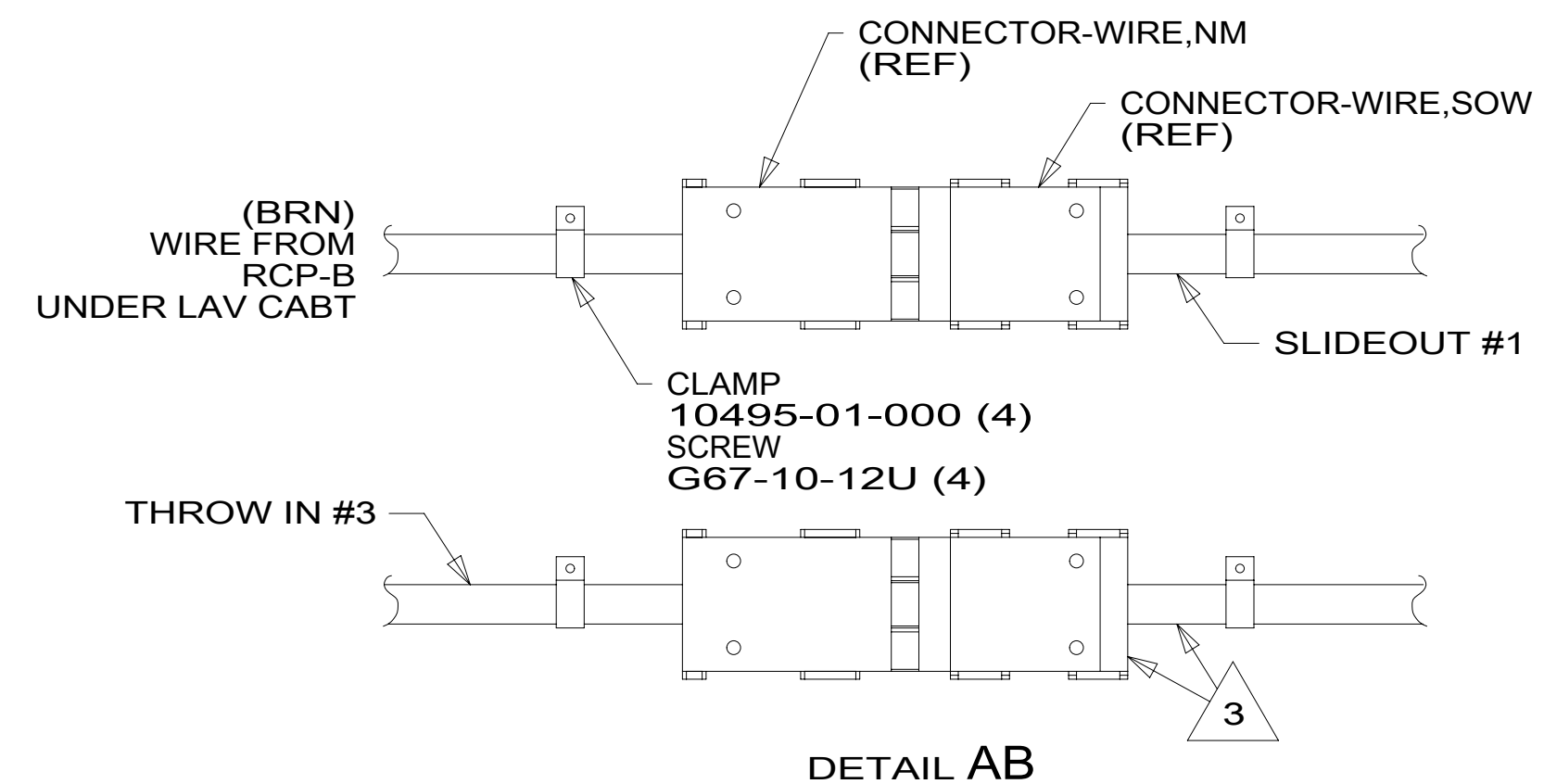


VIEW AA



4. AT MINIMUM ALL WIRES TO BE SUPPORTED AND SECURED PER CODE REQUIREMENTS. USE CLAMP 10495 OR 10497 OR 083610 OR WIRE TIE 8343 OR 108046 AND SCREW G67-XX-XXX OR G56-XX-XXX AS APPROPRIATE FOR INSTALLATION.
- 3 CORD & CONNECTOR ARE PART OF WIRE ASM-CHASSIS.
- 2 WIRE ROUTES THROUGH FLOOR IN THIS AREA.
1. WIRES ROUTED UNDER FLOOR.

NOTES:



DETAIL AB

FOR ELECTRICAL TORQUE SPECIFICATIONS SEE DWG NO. 128783-01-000

FOR ELECTRICAL CALLOUTS SEE DWG NO. 121339-01-000

- 265 CODES/STANDARDS-CSA/CMVSS
- 1B1 CODES/STANDARDS USA

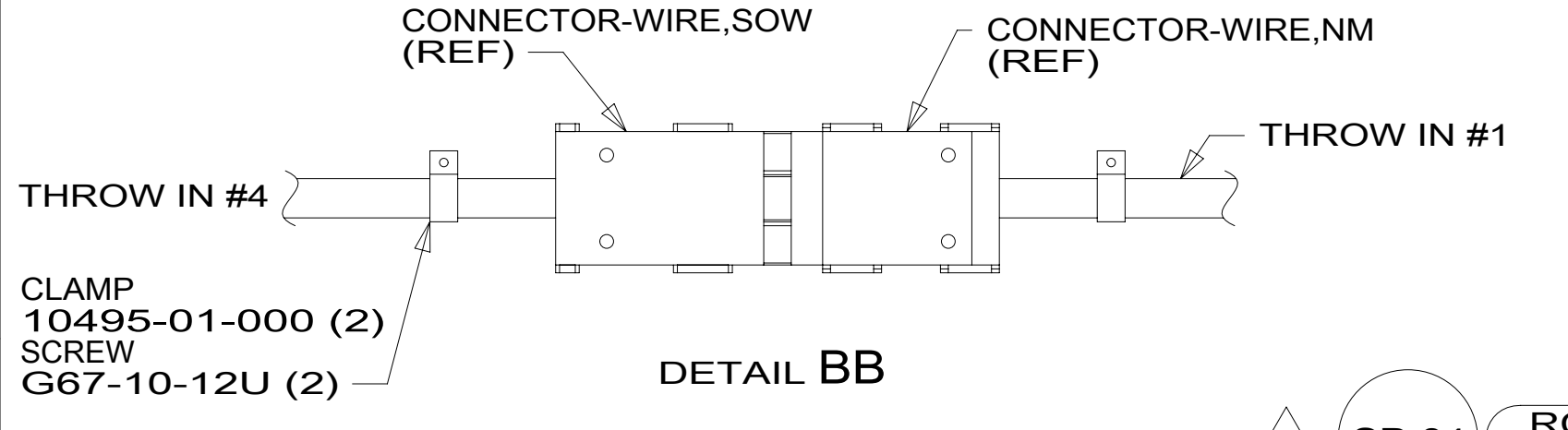
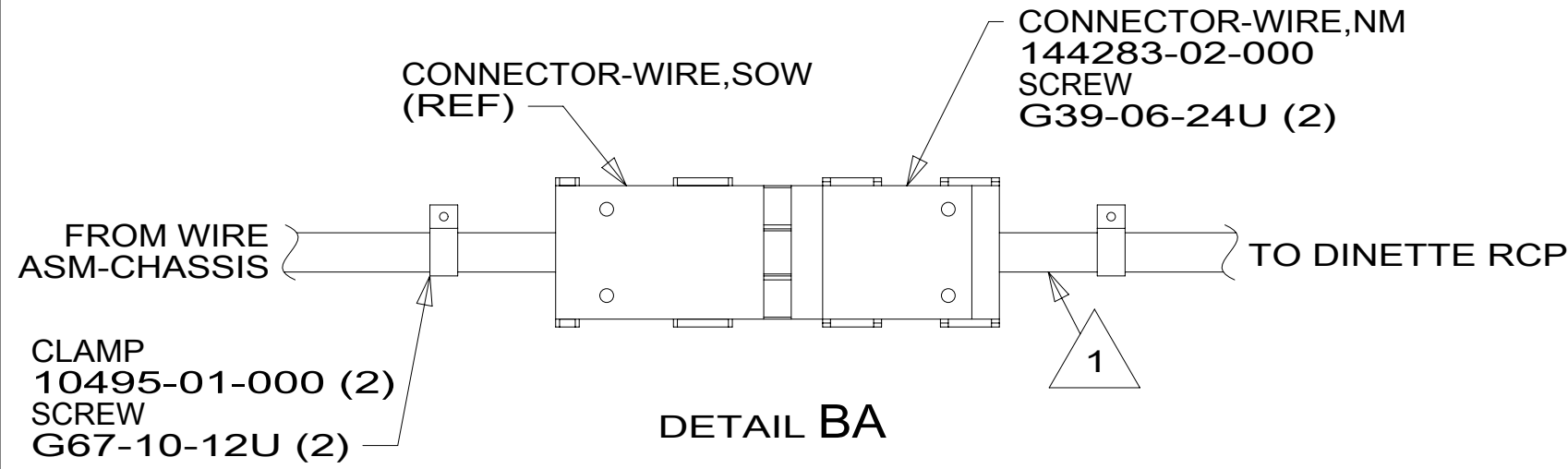
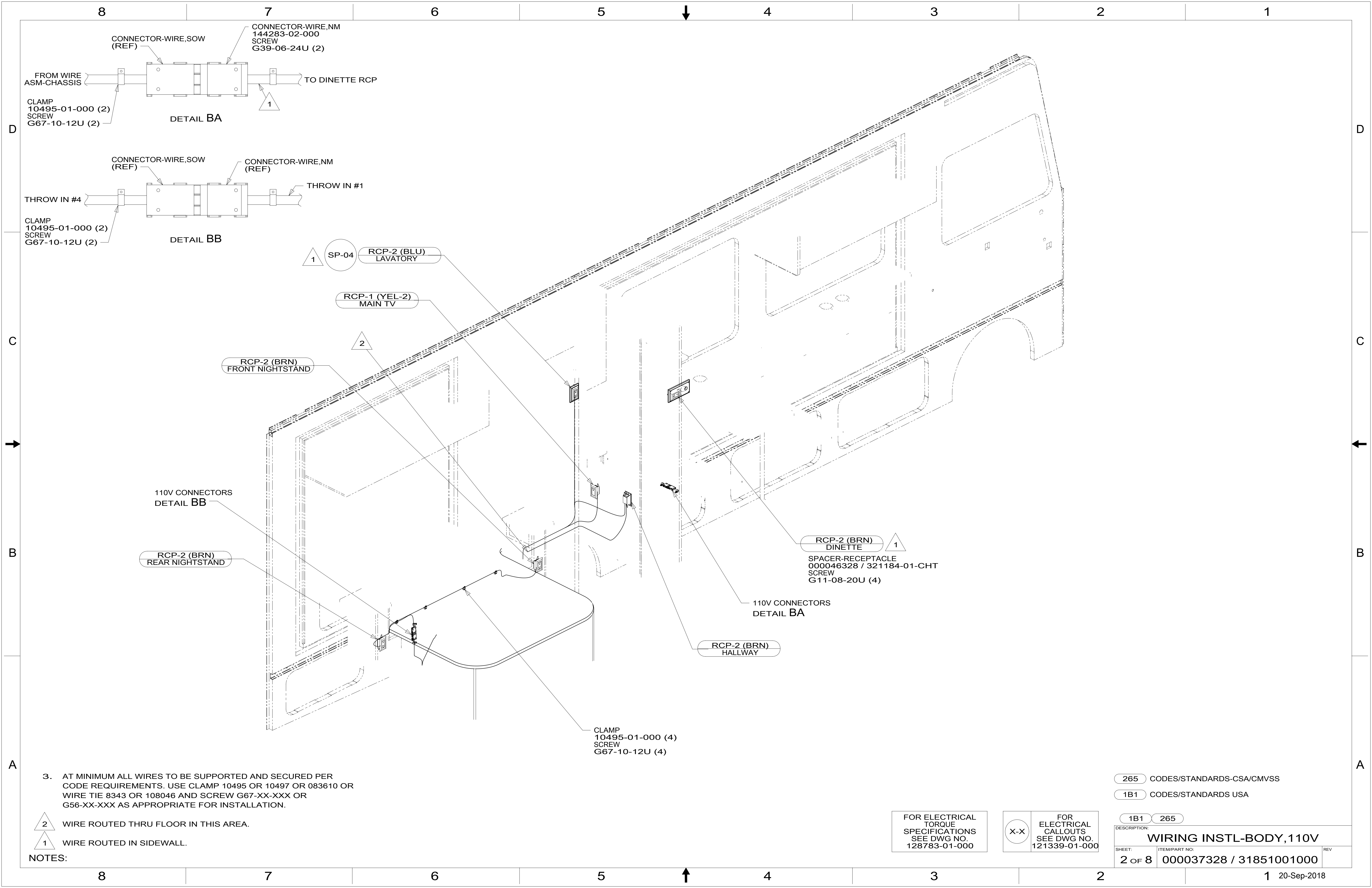
- 1B1 265



DSNR:	ALL DIMENSIONS ARE IN MILLIMETERS	
DFFR:	MATERIAL:	
UNSPECIFIED TOLERANCES:	WHOLE DIM (X) :	3
	ONE-PLACE (X.X) :	1.5
	TWO-PLACE (X.XX) :	0.50
	ANGLE :	1°
REFER TO ES0018 FOR FASTENER TIGHTENING GUIDELINES	WEIGHT: (LBS)	FIRST USED:
		18 V30R

**WIRING INSTL-BODY, 110V**

SHEET:	ITEM/PART NO.:	REV:
1 OF 8	000037328 / 31851001000	



1 SP-04 RCP-2 (BLU) LAVATORY

RCP-1 (YEL-2) MAIN TV

2 RCP-2 (BRN) FRONT NIGHTSTAND

RCP-2 (BRN) REAR NIGHTSTAND

1 RCP-2 (BRN) DINETTE

SPACER-RECEPTACLE 000046328 / 321184-01-CHT SCREW G11-08-20U (4)

110V CONNECTORS DETAIL BA

RCP-2 (BRN) HALLWAY

CLAMP 10495-01-000 (4) SCREW G67-10-12U (4)

3. AT MINIMUM ALL WIRES TO BE SUPPORTED AND SECURED PER CODE REQUIREMENTS. USE CLAMP 10495 OR 10497 OR 083610 OR WIRE TIE 8343 OR 108046 AND SCREW G67-XX-XXX OR G56-XX-XXX AS APPROPRIATE FOR INSTALLATION.

2 WIRE ROUTED THRU FLOOR IN THIS AREA.

1 WIRE ROUTED IN SIDEWALL.

NOTES:

265 CODES/STANDARDS-CSA/CMVSS

1B1 CODES/STANDARDS USA

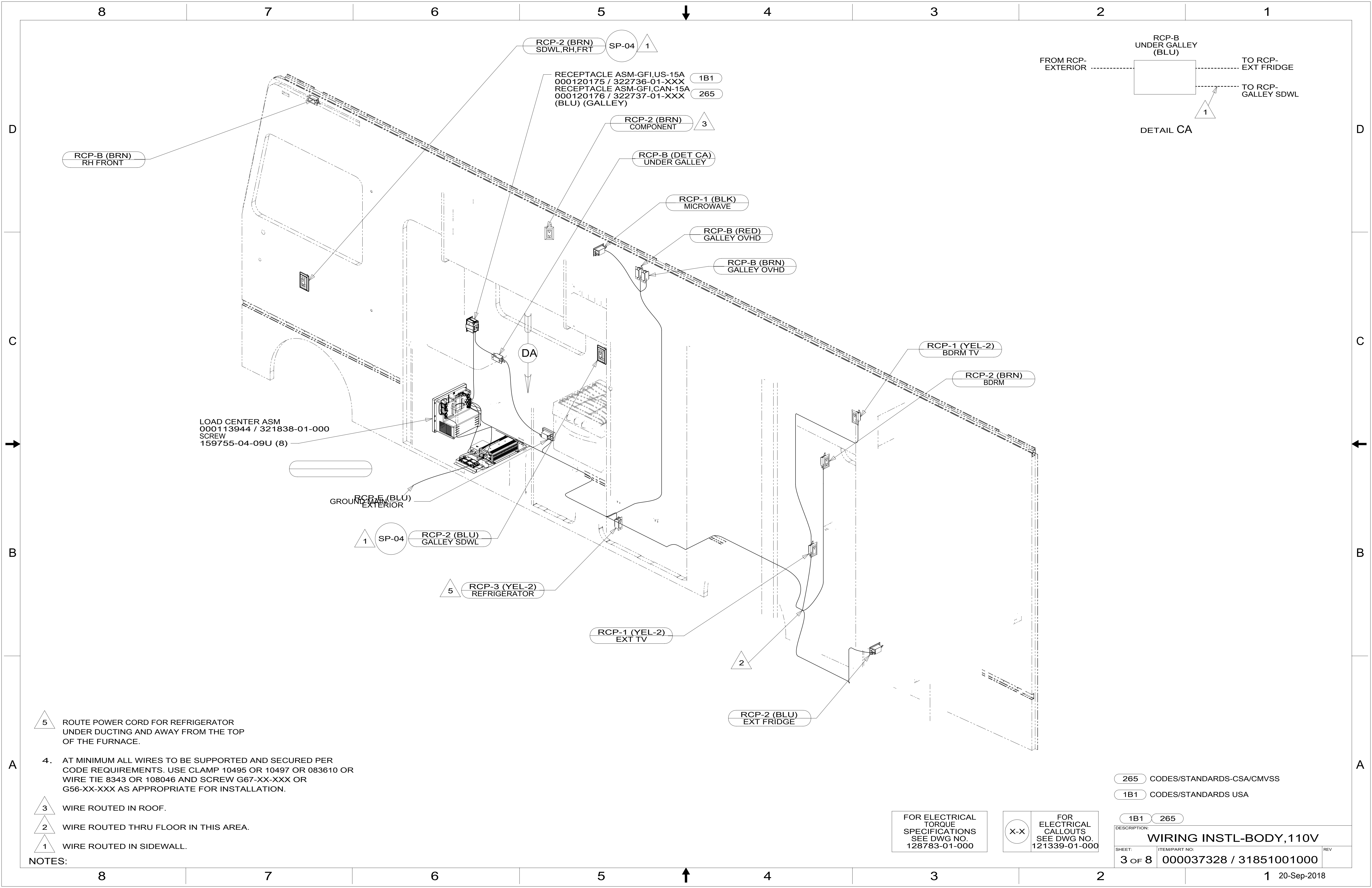
1B1 265

FOR ELECTRICAL TORQUE SPECIFICATIONS SEE DWG NO. 128783-01-000

FOR ELECTRICAL CALLOUTS SEE DWG NO. 121339-01-000

DESCRIPTION: WIRING INSTL-BODY, 110V

SHEET: 2 OF 8 ITEM/PART NO: 000037328 / 31851001000 REV



RCP-B (BRN)  
RH FRONT

RCP-2 (BRN)  
SDWL,RH,FRT SP-04 1

RECEPTACLE ASM-GFI,US-15A  
000120175 / 322736-01-XXX 1B1  
RECEPTACLE ASM-GFI,CAN-15A  
000120176 / 322737-01-XXX 265  
(BLU) (GALLEY)

RCP-2 (BRN)  
COMPONENT 3

RCP-B (DET CA)  
UNDER GALLEY

RCP-1 (BLK)  
MICROWAVE

RCP-B (RED)  
GALLEY OVHD

RCP-B (BRN)  
GALLEY OVHD

RCP-1 (YEL-2)  
BDRM TV

RCP-2 (BRN)  
BDRM

LOAD CENTER ASM  
000113944 / 321838-01-000  
SCREW  
159755-04-09U (8)

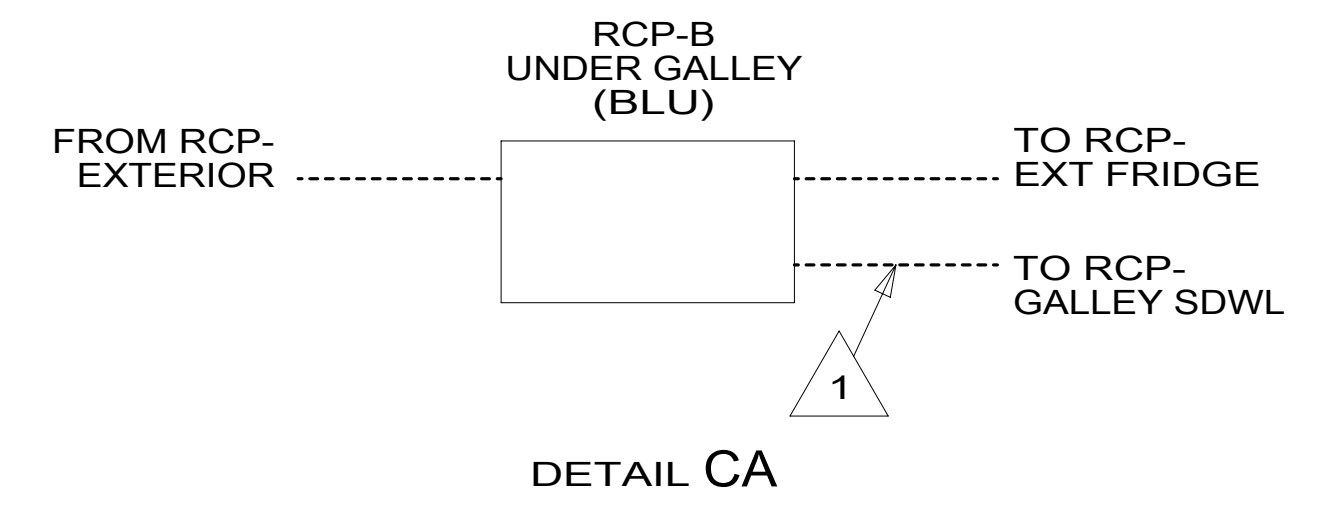
RCP-1E (BLU)  
GROUND MAIN EXTERIOR

RCP-2 (BLU)  
GALLEY SDWL SP-04 1

RCP-3 (YEL-2)  
REFRIGERATOR 5

RCP-1 (YEL-2)  
EXT TV

RCP-2 (BLU)  
EXT FRIDGE



5 ROUTE POWER CORD FOR REFRIGERATOR  
UNDER DUCTING AND AWAY FROM THE TOP  
OF THE FURNACE.

4. AT MINIMUM ALL WIRES TO BE SUPPORTED AND SECURED PER  
CODE REQUIREMENTS. USE CLAMP 10495 OR 10497 OR 083610 OR  
WIRE TIE 8343 OR 108046 AND SCREW G67-XX-XXX OR  
G56-XX-XXX AS APPROPRIATE FOR INSTALLATION.

3 WIRE ROUTED IN ROOF.

2 WIRE ROUTED THRU FLOOR IN THIS AREA.

1 WIRE ROUTED IN SIDEWALL.

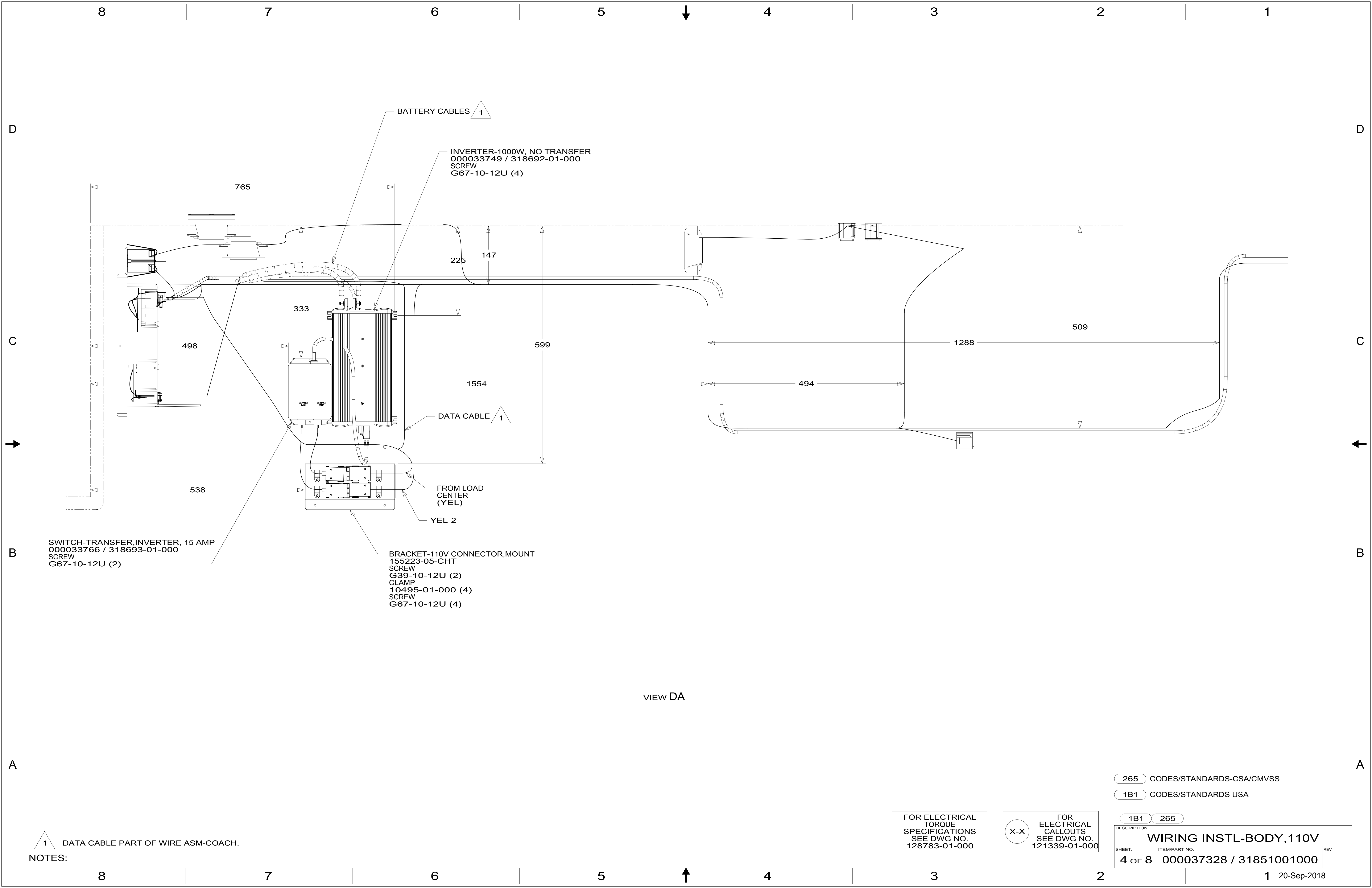
NOTES:

265 CODES/STANDARDS-CSA/CMVSS  
1B1 CODES/STANDARDS USA

FOR ELECTRICAL  
TORQUE  
SPECIFICATIONS  
SEE DWG NO.  
128783-01-000

FOR  
ELECTRICAL  
CALLOUTS  
SEE DWG NO.  
121339-01-000

DESCRIPTION:	
<b>WIRING INSTL-BODY, 110V</b>	
SHEET:	ITEM/PART NO. REV
3 OF 8	000037328 / 31851001000



VIEW DA

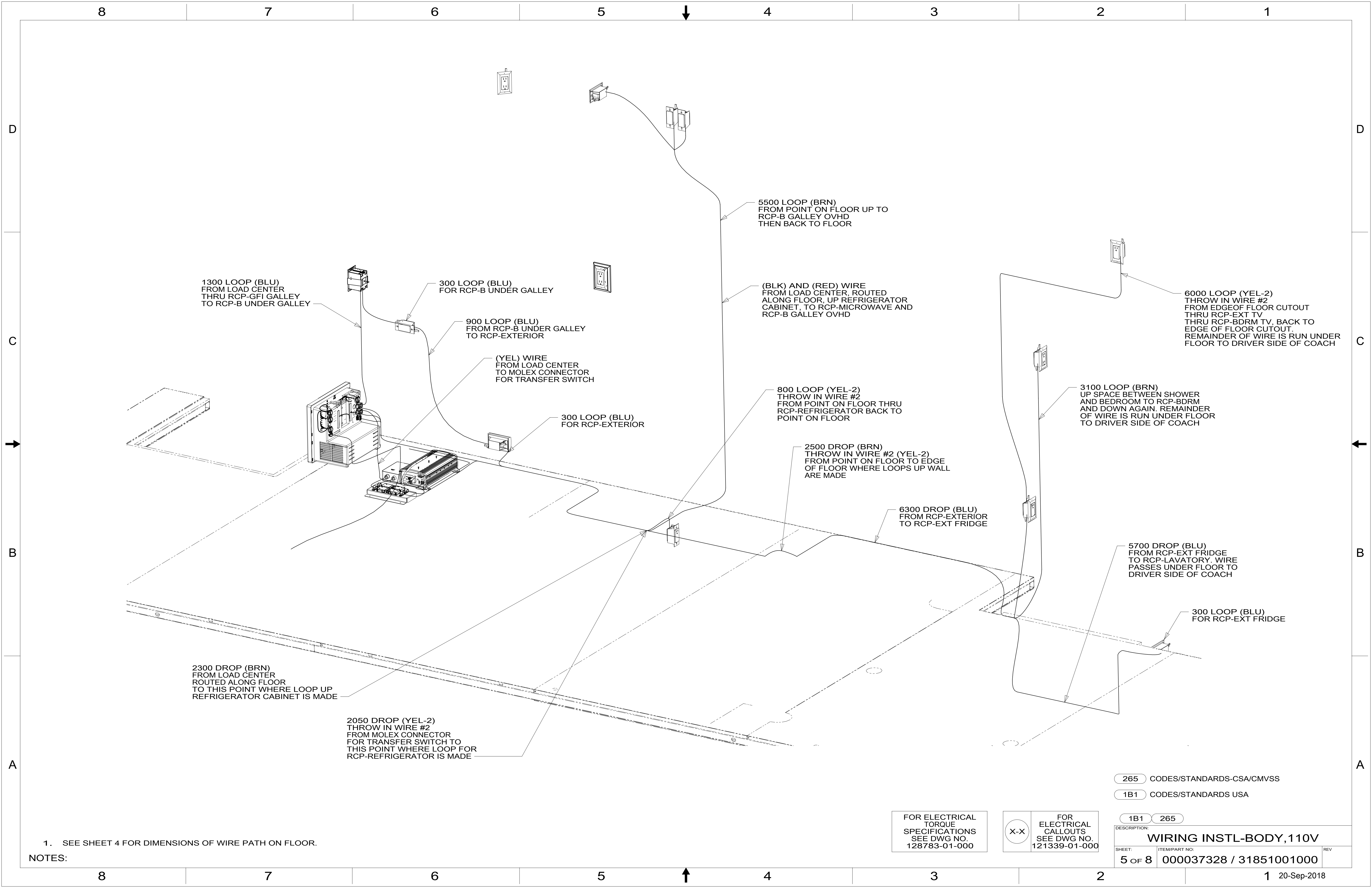
NOTES:  
 1 DATA CABLE PART OF WIRE ASM-COACH.

FOR ELECTRICAL TORQUE SPECIFICATIONS SEE DWG NO. 128783-01-000

FOR ELECTRICAL CALLOUTS SEE DWG NO. 121339-01-000

265 CODES/STANDARDS-CSA/CMVSS  
 1B1 CODES/STANDARDS USA

DESCRIPTION:	
1B1 265	
<b>WIRING INSTL-BODY, 110V</b>	
SHEET:	ITEM/PART NO. REV
4 OF 8	000037328 / 31851001000



1300 LOOP (BLU)  
FROM LOAD CENTER  
THRU RCP-GFI GALLEY  
TO RCP-B UNDER GALLEY

300 LOOP (BLU)  
FOR RCP-B UNDER GALLEY

900 LOOP (BLU)  
FROM RCP-B UNDER GALLEY  
TO RCP-EXTERIOR

(YEL) WIRE  
FROM LOAD CENTER  
TO MOLEX CONNECTOR  
FOR TRANSFER SWITCH

300 LOOP (BLU)  
FOR RCP-EXTERIOR

5500 LOOP (BRN)  
FROM POINT ON FLOOR UP TO  
RCP-B GALLEY OVHD  
THEN BACK TO FLOOR

(BLK) AND (RED) WIRE  
FROM LOAD CENTER, ROUTED  
ALONG FLOOR, UP REFRIGERATOR  
CABINET, TO RCP-MICROWAVE AND  
RCP-B GALLEY OVHD

800 LOOP (YEL-2)  
THROW IN WIRE #2  
FROM POINT ON FLOOR THRU  
RCP-REFRIGERATOR BACK TO  
POINT ON FLOOR

2500 DROP (BRN)  
THROW IN WIRE #2 (YEL-2)  
FROM POINT ON FLOOR TO EDGE  
OF FLOOR WHERE LOOPS UP WALL  
ARE MADE

6300 DROP (BLU)  
FROM RCP-EXTERIOR  
TO RCP-EXT FRIDGE

6000 LOOP (YEL-2)  
THROW IN WIRE #2  
FROM EDGE OF FLOOR CUTOUT  
THRU RCP-EXT TV  
THRU RCP-BDRM TV, BACK TO  
EDGE OF FLOOR CUTOUT.  
REMAINDER OF WIRE IS RUN UNDER  
FLOOR TO DRIVER SIDE OF COACH

3100 LOOP (BRN)  
UP SPACE BETWEEN SHOWER  
AND BEDROOM TO RCP-BDRM  
AND DOWN AGAIN. REMAINDER  
OF WIRE IS RUN UNDER FLOOR  
TO DRIVER SIDE OF COACH

5700 DROP (BLU)  
FROM RCP-EXT FRIDGE  
TO RCP-LAVATORY. WIRE  
PASSES UNDER FLOOR TO  
DRIVER SIDE OF COACH

300 LOOP (BLU)  
FOR RCP-EXT FRIDGE

2300 DROP (BRN)  
FROM LOAD CENTER  
ROUTED ALONG FLOOR  
TO THIS POINT WHERE LOOP UP  
REFRIGERATOR CABINET IS MADE

2050 DROP (YEL-2)  
THROW IN WIRE #2  
FROM MOLEX CONNECTOR  
FOR TRANSFER SWITCH TO  
THIS POINT WHERE LOOP FOR  
RCP-REFRIGERATOR IS MADE

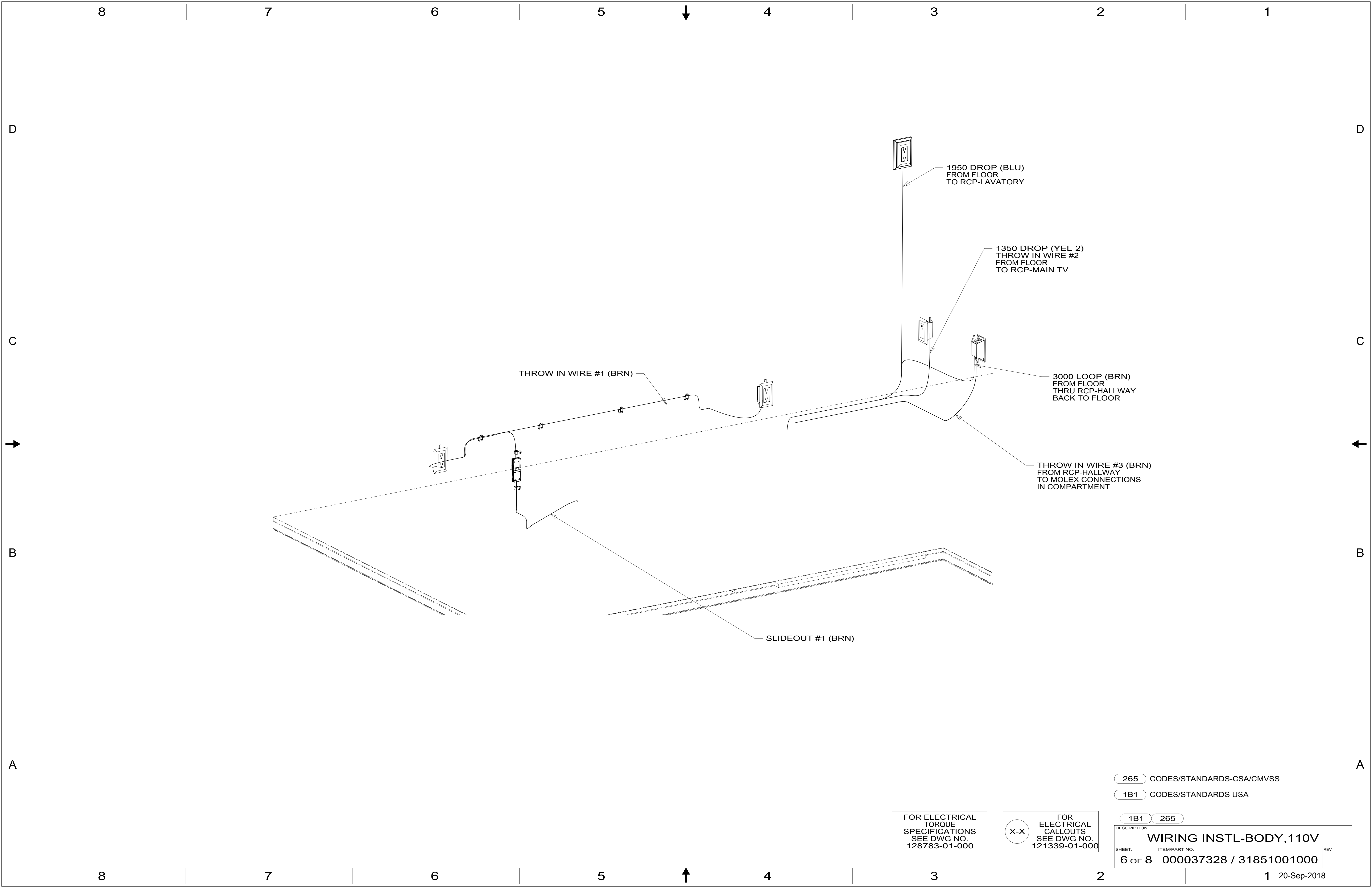
- 265 CODES/STANDARDS-CSA/CMVSS
- 1B1 CODES/STANDARDS USA

FOR ELECTRICAL  
TORQUE  
SPECIFICATIONS  
SEE DWG NO.  
128783-01-000

FOR ELECTRICAL  
CALLOUTS  
SEE DWG NO.  
121339-01-000

DESCRIPTION:	1B1 265	
<b>WIRING INSTL-BODY, 110V</b>		
SHEET:	ITEM/PART NO.:	REV:
5 OF 8	000037328 / 31851001000	

NOTES:  
1. SEE SHEET 4 FOR DIMENSIONS OF WIRE PATH ON FLOOR.



THROW IN WIRE #1 (BRN)

1950 DROP (BLU)  
FROM FLOOR  
TO RCP-LAVATORY

1350 DROP (YEL-2)  
THROW IN WIRE #2  
FROM FLOOR  
TO RCP-MAIN TV

3000 LOOP (BRN)  
FROM FLOOR  
THRU RCP-HALLWAY  
BACK TO FLOOR

THROW IN WIRE #3 (BRN)  
FROM RCP-HALLWAY  
TO MOLEX CONNECTIONS  
IN COMPARTMENT

SLIDEOUT #1 (BRN)

265 CODES/STANDARDS-CSA/CMVSS

1B1 CODES/STANDARDS USA

1B1 265

FOR ELECTRICAL  
TORQUE  
SPECIFICATIONS  
SEE DWG NO.  
128783-01-000

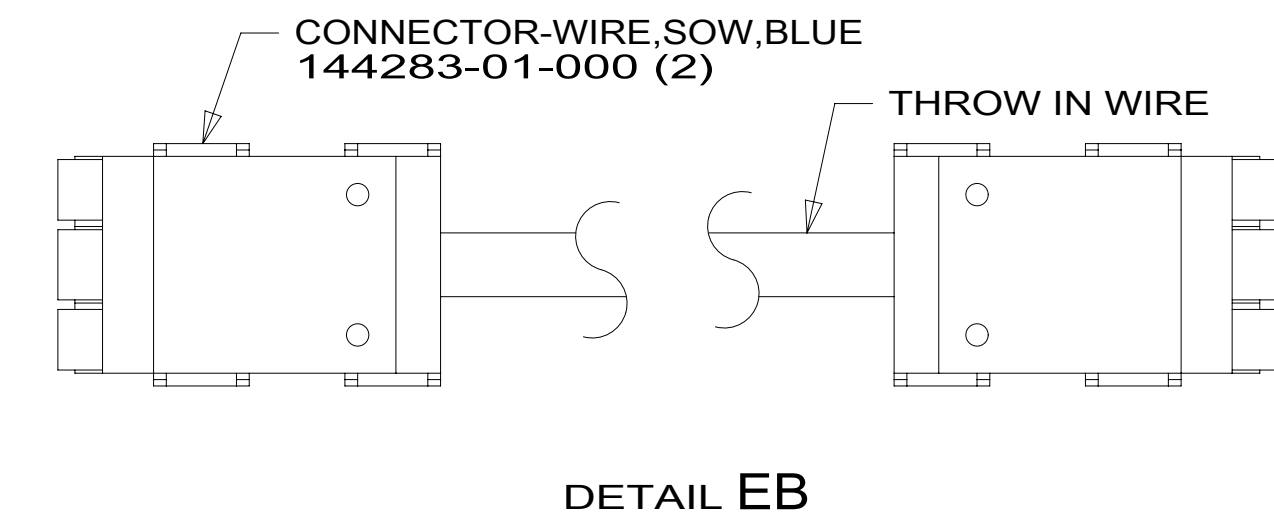
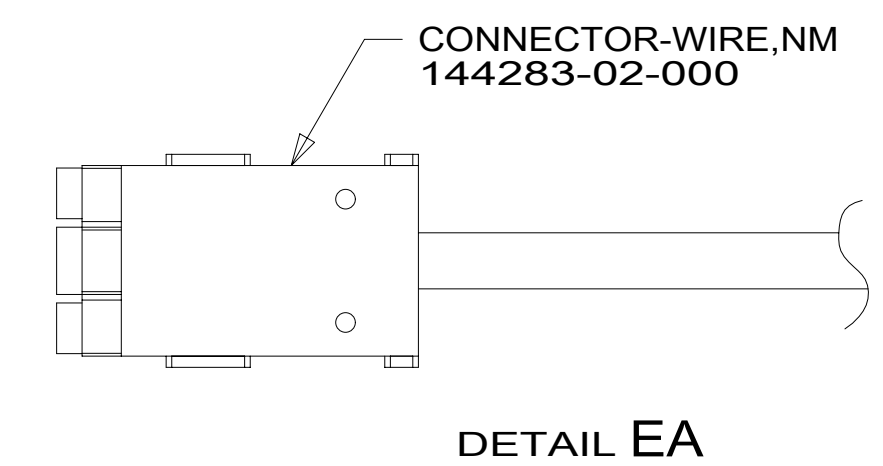
X-X

FOR  
ELECTRICAL  
CALLOUTS  
SEE DWG NO.  
121339-01-000

DESCRIPTION:  
**WIRING INSTL-BODY, 110V**

SHEET: 6 OF 8 ITEM/PART NO: 000037328 / 31851001000 REV

RED	1B1	136135-07-056	
	265	136136-07-056	
YEL	1B1	136131-05-011	3
	265	136134-05-011	3
BRN	1B1	136131-03-201	3
	265	136134-03-201	3
BLU	1B1	136131-02-152	
	265	136134-02-152	
MAIN	1B1	136137-01-088	5
	265	136138-01-088	5
BLK	1B1	136131-06-059	
	265	136134-06-059	
THROW IN WIRE #1	1B1	136131-03-035	3
	265	136134-03-035	3
THROW IN WIRE #2	1B1	136131-13-155	3
	265	136134-13-155	3
THROW IN WIRE #3	1B1	136131-03-029	3
	265	136134-03-029	3
SLIDEOUT #1		136151-03-018	4
GROUND MAIN		178545-01-016	



5 ATTACH ONE END OF MAIN TO LOAD CENTER. COVER OTHER END OF MAIN CABLE ASM WITH 950 MM OF CONDUIT 091234-02-000. SECURE WITH TAPE 8363-01-000.

4 SEE DETAIL EB FOR CONNECTOR INSTALLATION.

3 SEE DETAIL EA FOR CONNECTOR INSTALLATION.

2. SECURE WIRES TO BACKSIDE OF LOAD CENTER WITH WIRE TIE 116673-01-000.

1. ALL GROUNDS WIRES TO BE COVERED WITH TUBING 8041-02-000.

NOTES:

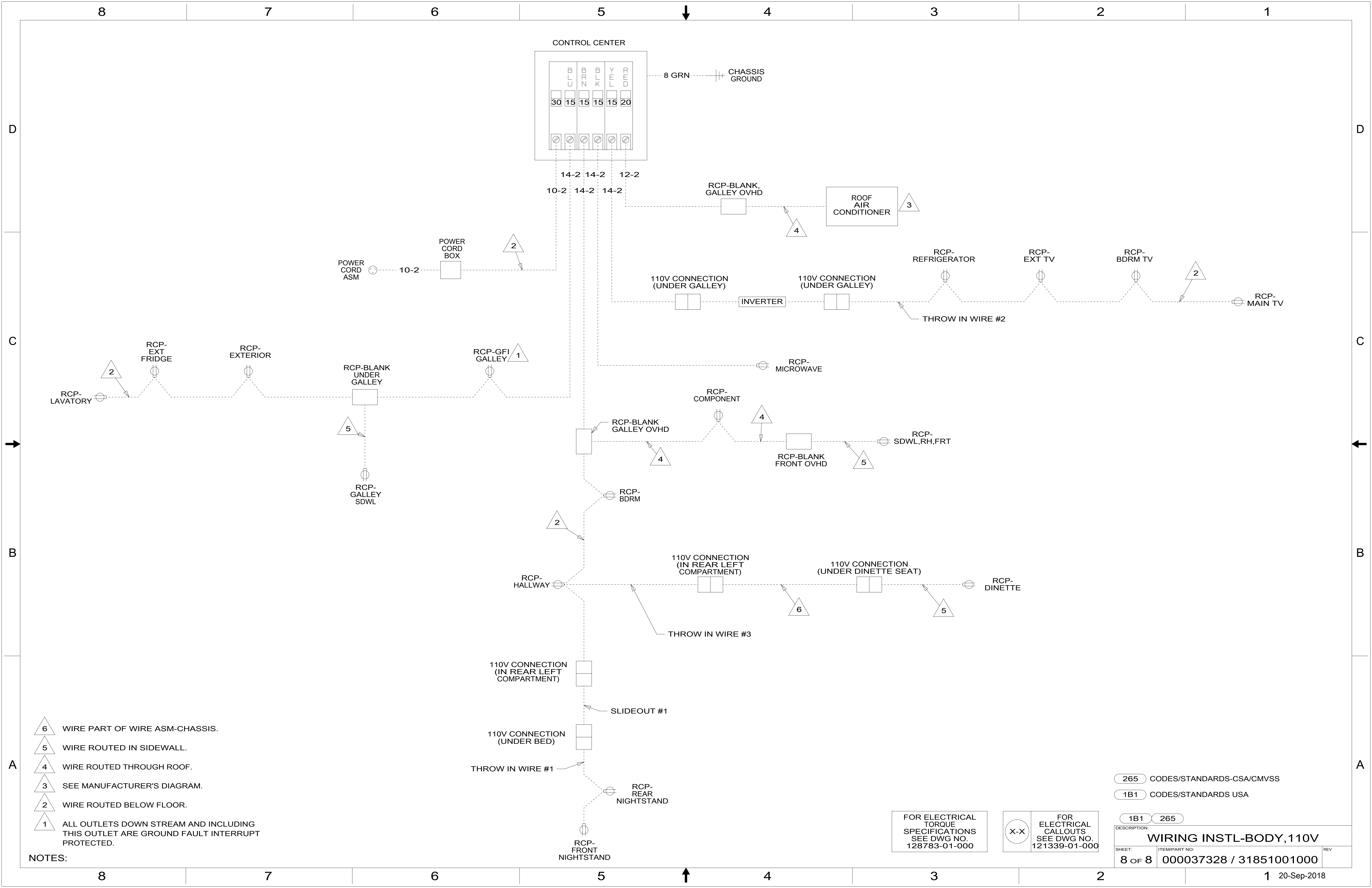
- 265 CODES/STANDARDS-CSA/CMVSS
- 1B1 CODES/STANDARDS USA

FOR ELECTRICAL TORQUE SPECIFICATIONS SEE DWG NO. 128783-01-000

FOR ELECTRICAL CALLOUTS SEE DWG NO. 121339-01-000

DESCRIPTION:	
1B1 265 WIRING INSTL-BODY, 110V	
SHEET:	ITEM/PART NO:
7 OF 8	000037328 / 31851001000
REV	





- NOTES:
- 6 WIRE PART OF WIRE ASM-CHASSIS.
  - 5 WIRE ROUTED IN SIDEWALL.
  - 4 WIRE ROUTED THROUGH ROOF.
  - 3 SEE MANUFACTURER'S DIAGRAM.
  - 2 WIRE ROUTED BELOW FLOOR.
  - 1 ALL OUTLETS DOWN STREAM AND INCLUDING THIS OUTLET ARE GROUND FAULT INTERRUPT PROTECTED.

FOR ELECTRICAL TORQUE SPECIFICATIONS SEE DWG NO. 128783-01-000

FOR ELECTRICAL CALLOUTS SEE DWG NO. 121339-01-000

- 265 CODES/STANDARDS-CSA/CMVSS
- 1B1 CODES/STANDARDS USA

DESCRIPTION:		1B1 265	
<b>WIRING INSTL-BODY, 110V</b>			
SHEET:	ITEM/PART NO.:	REV	
8 OF 8	000037328 / 31851001000		