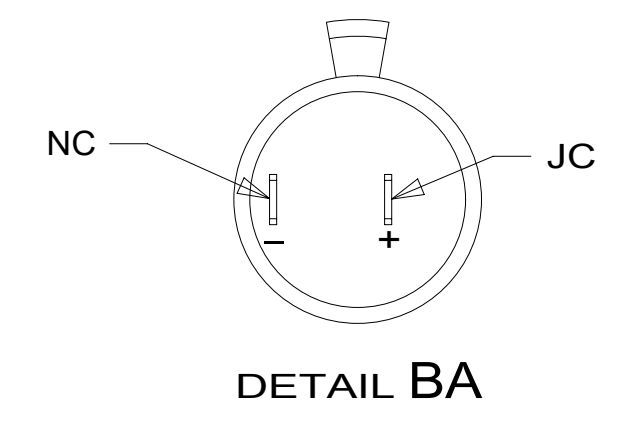
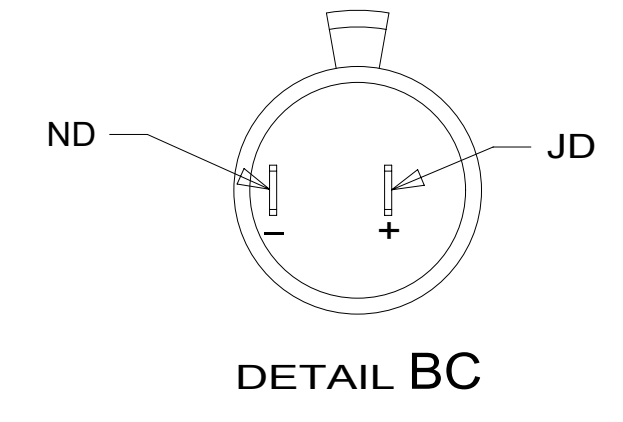


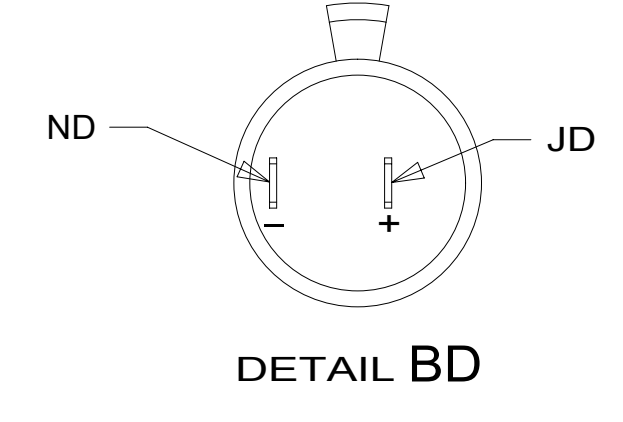
DETAIL BB



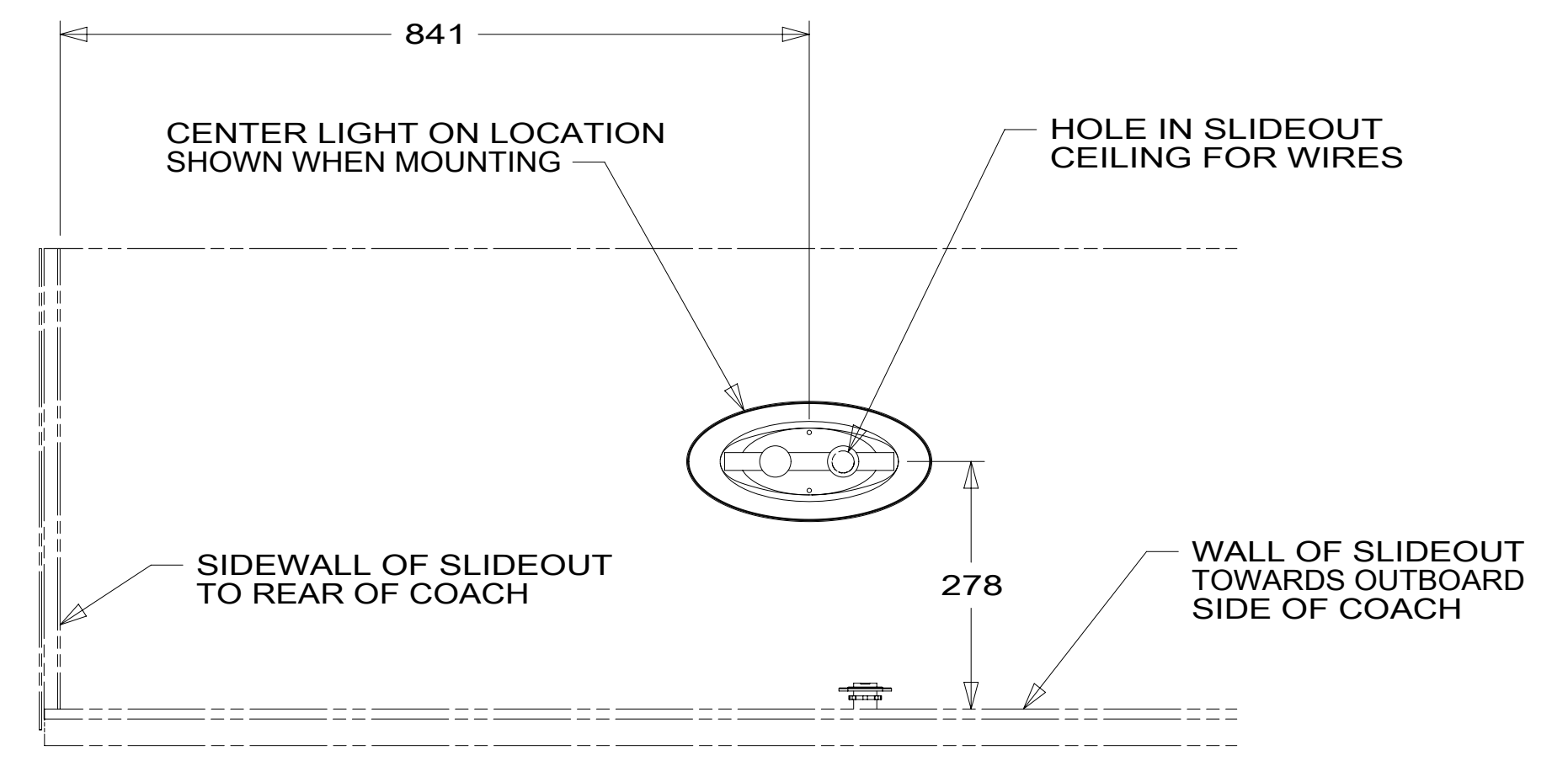
DETAIL BA



DETAIL BC



DETAIL BD



DETAIL BE

2 COMPONENT MOUNTED TO EXTERIOR SURFACE OF SIDEWALL.

1. AT MINIMUM ALL WIRES TO BE SUPPORTED AND SECURED PER CODE REQUIREMENTS. USE CLAMP 10495 OR 10497 OR 083610 OR WIRE TIE 8343 OR 108046 AND SCREW G67-XX-XXX OR G56-XX-XXX AS APPROPRIATE FOR INSTALLATION.

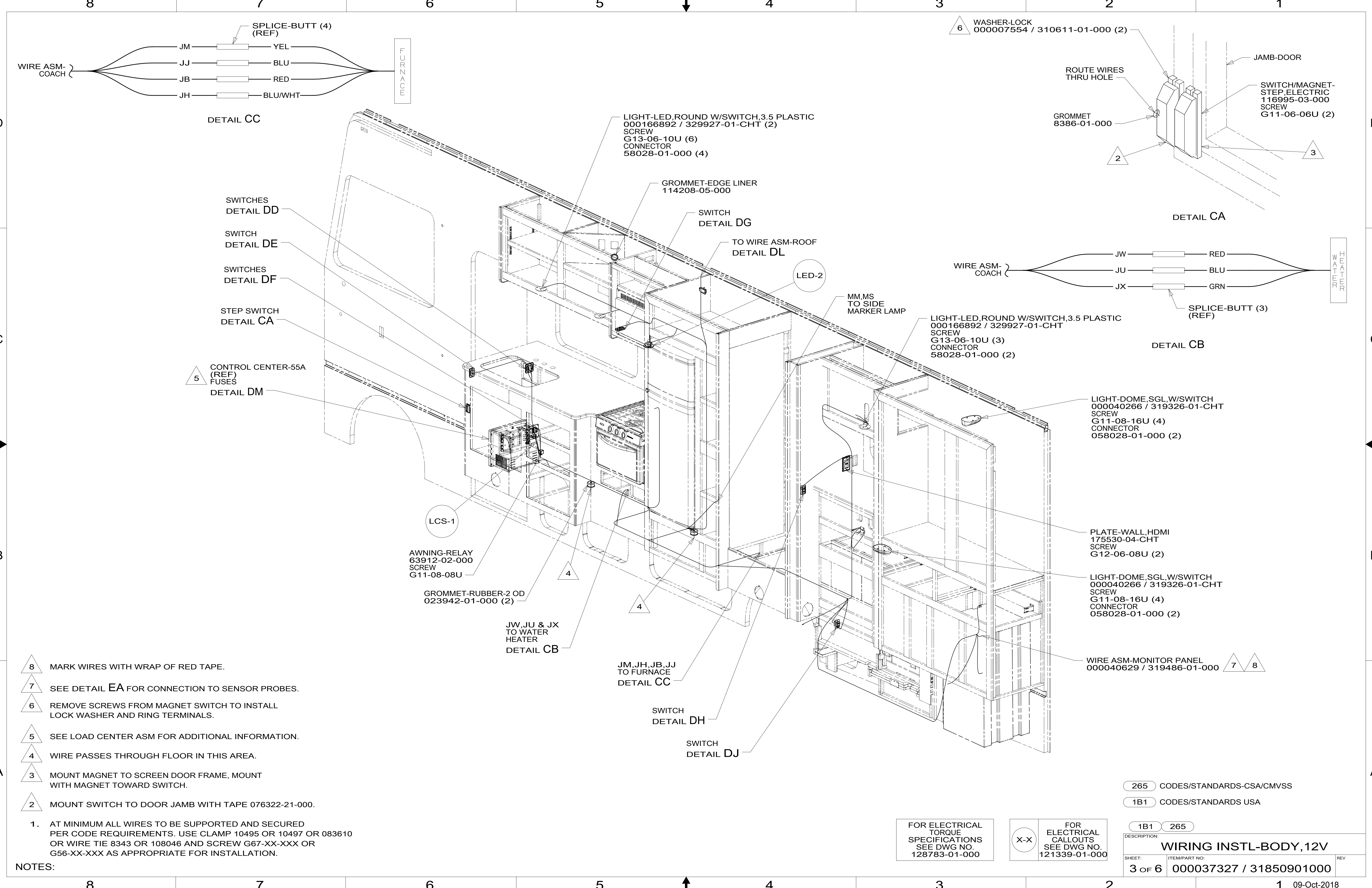
NOTES:

FOR ELECTRICAL TORQUE SPECIFICATIONS SEE DWG NO. 128783-01-000

FOR ELECTRICAL CALLOUTS SEE DWG NO. 121339-01-000

265	CODES/STANDARDS-CSA/CMVSS
1B1	CODES/STANDARDS USA

1B1	265
DESCRIPTION:	
WIRING INSTL-BODY, 12V	
SHEET:	ITEM/PART NO:
2 OF 6	000037327 / 31850901000
REV	
09-Oct-2018	



- 8 MARK WIRES WITH WRAP OF RED TAPE.
- 7 SEE DETAIL EA FOR CONNECTION TO SENSOR PROBES.
- 6 REMOVE SCREWS FROM MAGNET SWITCH TO INSTALL LOCK WASHER AND RING TERMINALS.
- 5 SEE LOAD CENTER ASM FOR ADDITIONAL INFORMATION.
- 4 WIRE PASSES THROUGH FLOOR IN THIS AREA.
- 3 MOUNT MAGNET TO SCREEN DOOR FRAME, MOUNT WITH MAGNET TOWARD SWITCH.
- 2 MOUNT SWITCH TO DOOR JAMB WITH TAPE 076322-21-000.

1. AT MINIMUM ALL WIRES TO BE SUPPORTED AND SECURED PER CODE REQUIREMENTS. USE CLAMP 10495 OR 10497 OR 083610 OR WIRE TIE 8343 OR 108046 AND SCREW G67-XX-XXX OR G56-XX-XXX AS APPROPRIATE FOR INSTALLATION.

NOTES:

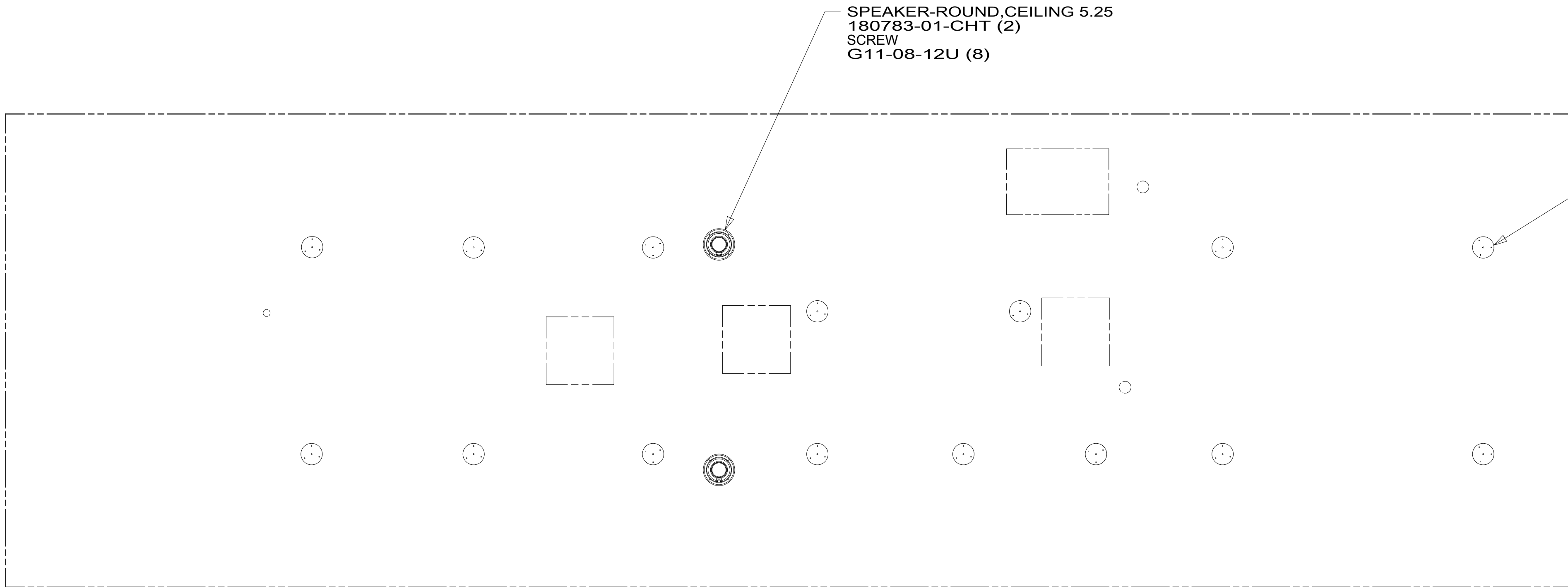
265 CODES/STANDARDS-CSA/CMVSS
 1B1 CODES/STANDARDS USA

FOR ELECTRICAL TORQUE SPECIFICATIONS SEE DWG NO. 128783-01-000

FOR ELECTRICAL CALLOUTS SEE DWG NO. 121339-01-000

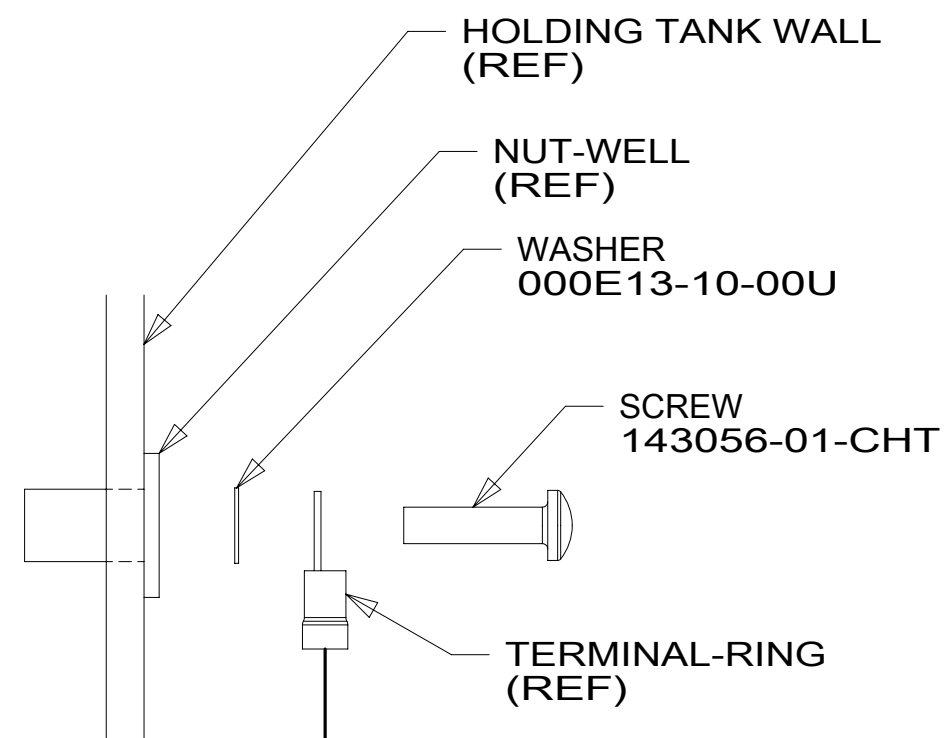
DESCRIPTION:	WIRING INSTL-BODY, 12V	
SHEET:	ITEM/PART NO.:	REV:
3 OF 6	000037327 / 31850901000	

8 7 6 5 4 3 2 1

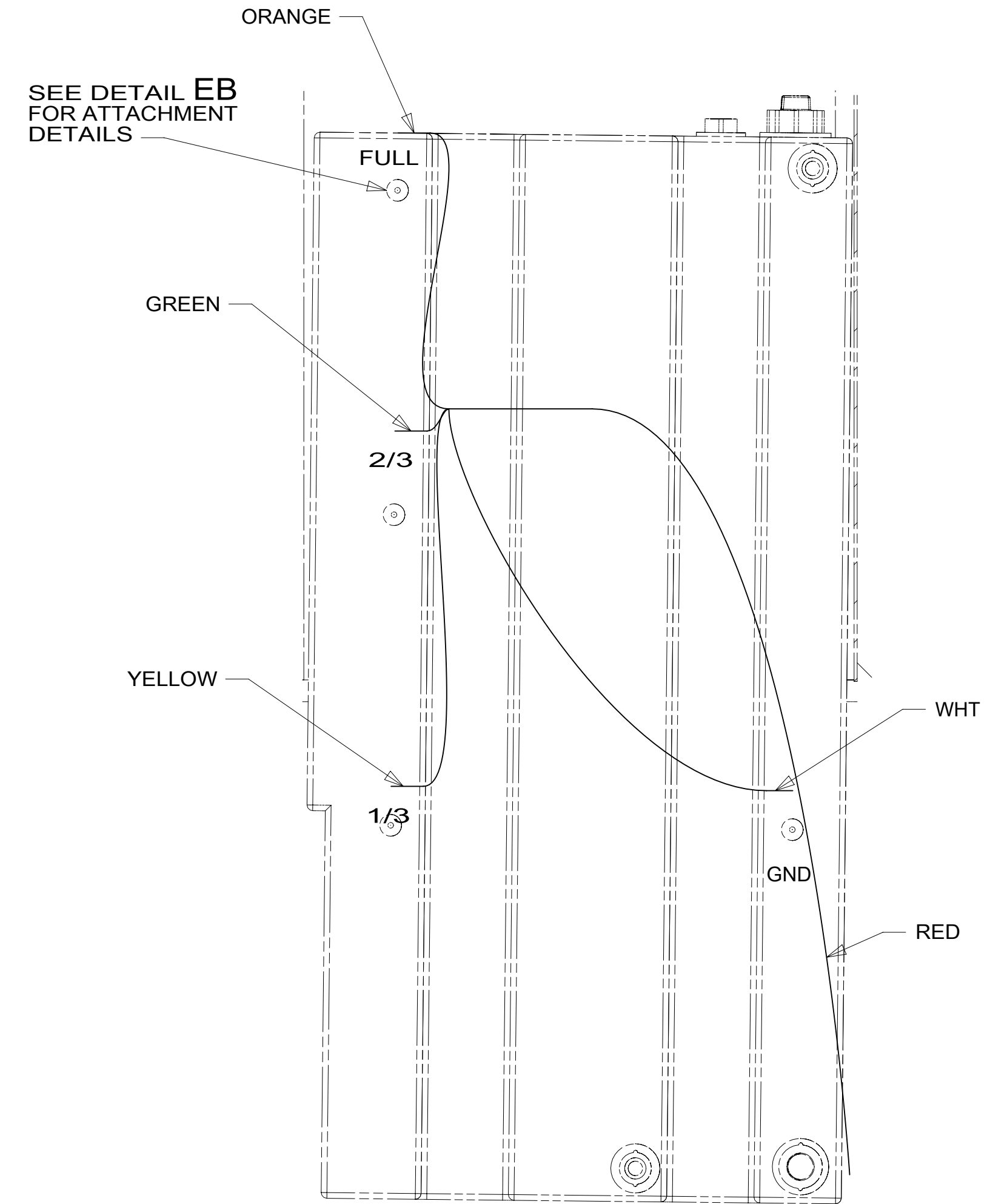


SPEAKER-ROUND,CEILING 5.25
180783-01-CHT (2)
SCREW
G11-08-12U (8)

LIGHT-LED,ROUND 4.5 PLASTIC
000166889 / 329926-01-CHT (15)
SCREW
G13-06-16U (45)
CONNECTOR
58028-01-000 (30)



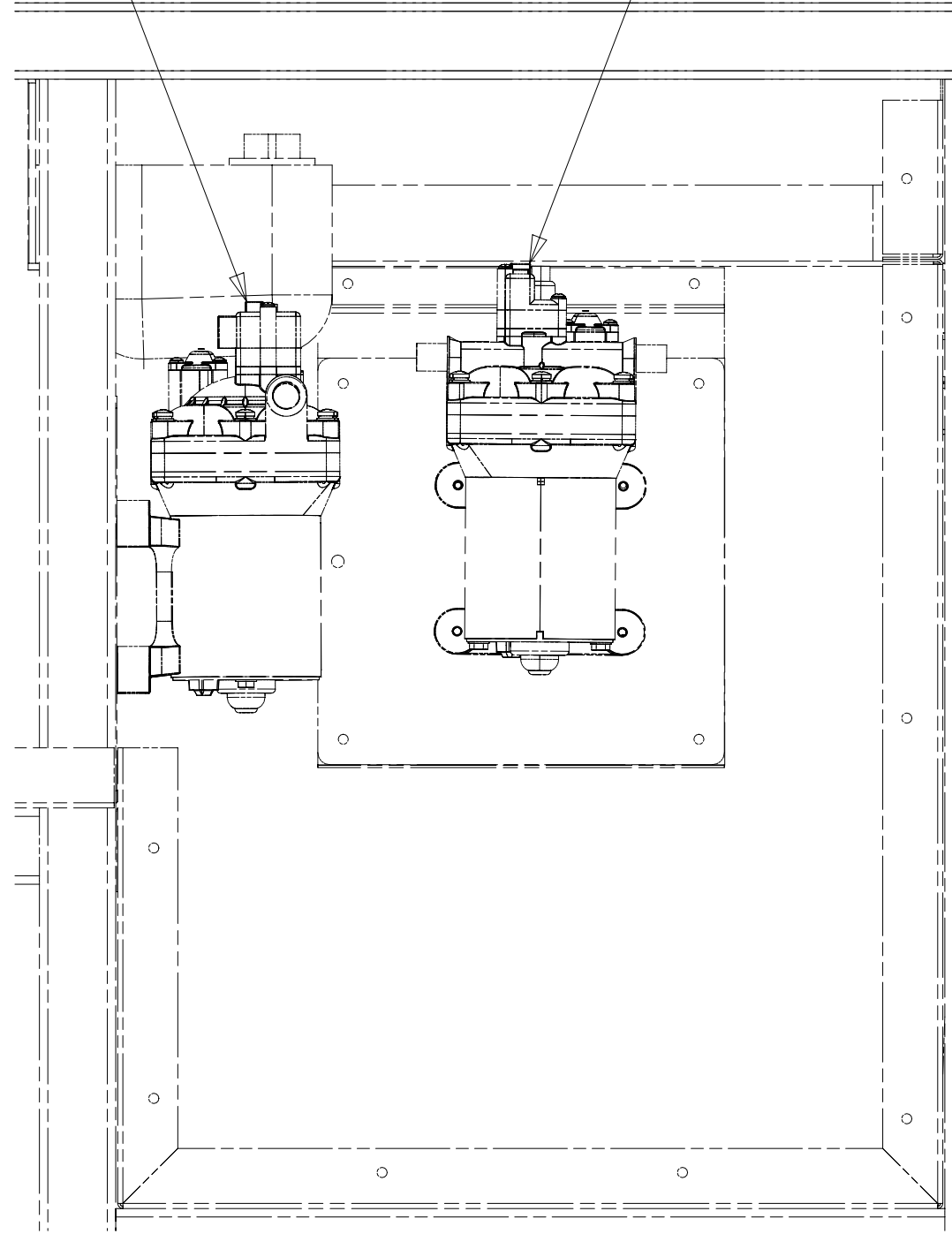
DETAIL EB 1



DETAIL EA

DRAINAGE PUMP-
PLUG IN WIRES
WITH GREEN TAPE-
CIRCUITS: DA,PM

WATER PUMP-
PLUG IN WIRES
WITH YELLOW TAPE-
CIRCUITS: JY,JS



DETAIL EC

1 TYPICAL WIRE ATTACHMENT AT ALL LEVEL PROBES (4 EACH)
FOR WATER, MAIN, AND AUX HOLDING TANKS.

NOTES:

FOR ELECTRICAL
TORQUE
SPECIFICATIONS
SEE DWG NO.
128783-01-000

FOR
ELECTRICAL
CALLOUTS
SEE DWG NO.
121339-01-000

- 265 CODES/STANDARDS-CSA/CMVSS
- 1B1 CODES/STANDARDS USA

1B1 265

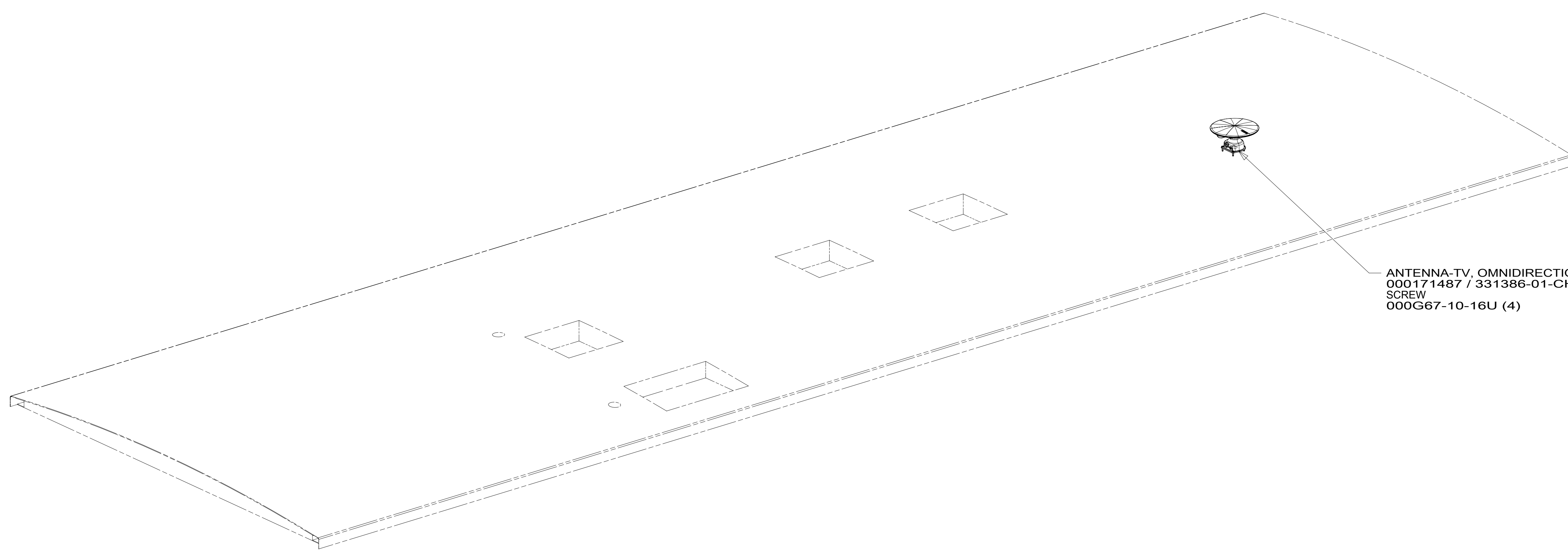
DESCRIPTION: WIRING INSTL-BODY, 12V		
SHEET: 5 OF 6	ITEM/PART NO: 000037327 / 31850901000	REV

8 7 6 5 4 3 2 1 09-Oct-2018

8 7 6 5 4 3 2 1

D
C
B
A

D
C
B
A



ANTENNA-TV, OMNIDIRECTIONAL
 000171487 / 331386-01-CHT
 SCREW
 000G67-10-16U (4) 1

1 SEE ANTENNA INSTALLATION MANUAL FOR CORRECT
 INSTALLATION PROCEDURE.

NOTES:

FOR ELECTRICAL
 TORQUE
 SPECIFICATIONS
 SEE DWG NO.
 128783-01-000

FOR
 ELECTRICAL
 CALLOUTS
 SEE DWG NO.
 121339-01-000

265 CODES/STANDARDS-CSA/CMVSS
1B1 CODES/STANDARDS USA

1B1 265

DESCRIPTION:
WIRING INSTL-BODY, 12V

SHEET: 6 OF 6	ITEM/PART NO.: 000037327 / 31850901000	REV
-------------------------	--	-----

8 7 6 5 4 3 2 1 09-Oct-2018