

- 9. PREPARE THE SURFACE PER MANUFACTURERS INSTRUCTIONS. BEFORE APPLYING THE HEAT PADS.
- 8. USE SMOOTH PLUMBERS PUTTY 167459-01-000 TO SEAL STRAINER (.2 PER STRAINER).
- 7. SECURE VENT PIPE TO FLOOR WITH CLAMP 000156237 / 326663-02-000 (3), SCREW 000G67-10-12U (3), BRACKET 136878-01-CHT (3).
- 6. VENT PIPE MUST PROJECT 51 MIN AND 64 MAX ABOVE ROOF FOR PROPER FIT AND FUNCTION. ADD S-1 (000156099 / 326607-01-CHT SEAL-VENT PIPE) AROUND PIPE ON ROOF BEFORE VENT CAP IS INSTALLED.
- 5. SEAL AROUND SHOWER WITH SILICONE.
- 4. SECURE DRAINAGE PIPES TO CABINET USING WIRE TIES 108046-02-000 AND SCREW 000G67-10-12U AT INTERVALS OF NOT MORE THAN 4 FEET APART.
- 3. ALL PIPE AND FITTINGS TO BE ASSEMBLED WITH SOLVENT 004020-01-000 (USA), 004020-02-000 (CAN)
- 2. SLOPE OF TRAP ARM MUST BE 6 PER 305 mm.
- 1. SLOPE OF HORIZONTAL PIPING TO BE MINIMUM OF 3 PER 305 mm.

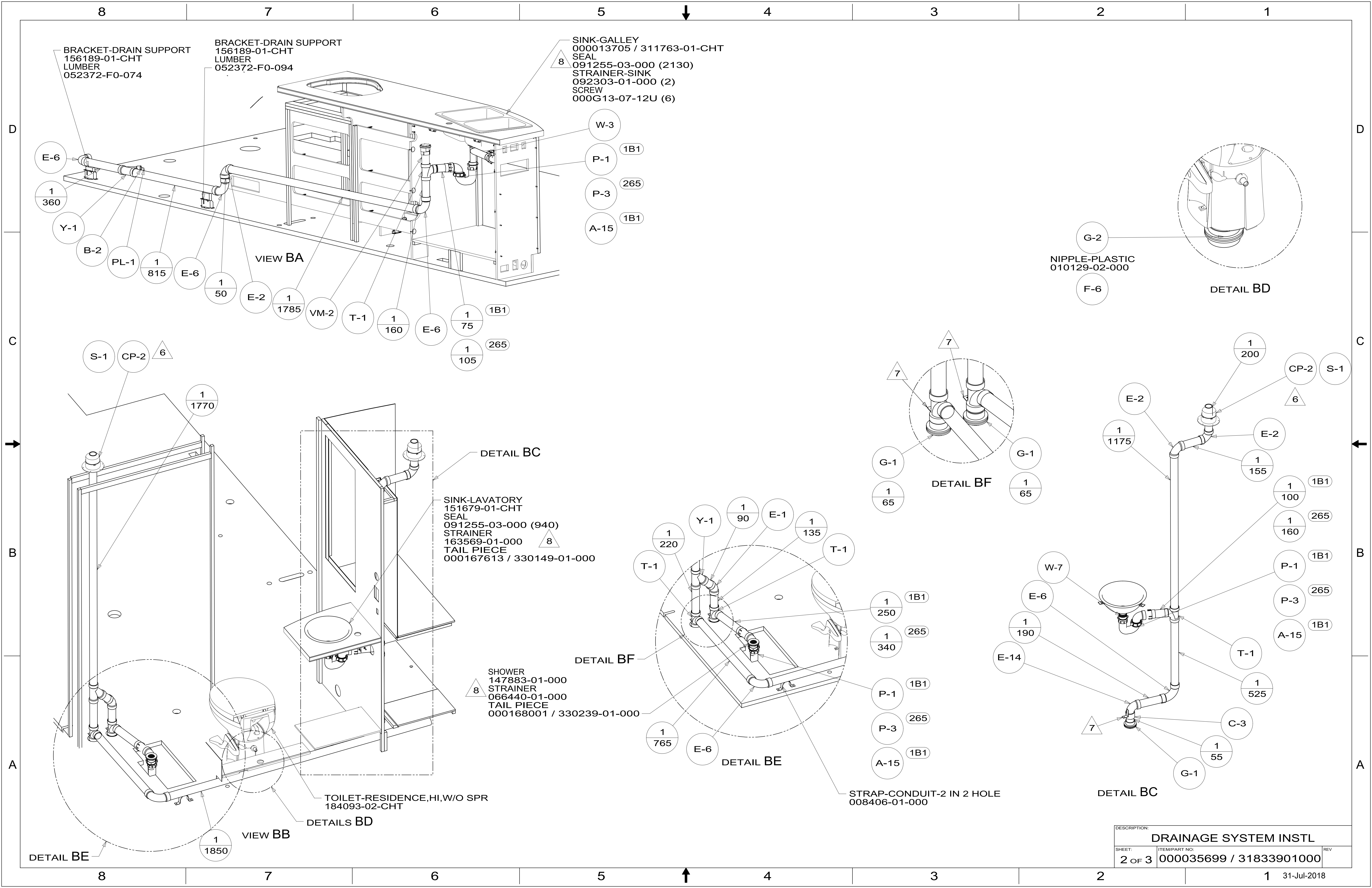
NOTES:

- 23T DRAINAGE SYSTEM-HEATED
- 265 CODES/STANDARDS-CSA/CMVSS
- 1B1 CODES/STANDARDS USA

WINNEBAGO[®]
COPYRIGHT 2018 WINNEBAGO INDUSTRIES, INC.

DSNR:		ALL DIMENSIONS ARE IN MILLIMETERS	
DIFFR:			
UNSPECIFIED TOLERANCES:	MATERIAL:		
WHOLE DIM (X) :	3		
ONE-PLACE (X.X) :	1.5		
TWO-PLACE (X.XX) :	0.50		
ANGLE :	1°		
REFER TO ES0018 FOR FASTENER TIGHTENING GUIDELINES	WEIGHT: (LBS)	FIRST USED: (REF)	
	-	18 524D	
DESCRIPTION:			
DRAINAGE SYSTEM INSTL			
SHEET:	ITEM/PART NO.:	REV	
1 OF 3	000035699 / 31833901000		
REF:		1 31-Jul-2018	

X-X
FOR DRAINAGE CALLOUTS SEE DWG NO. 000211962 / 303370-01-000



BRACKET-DRAIN SUPPORT
156189-01-CHT
LUMBER
052372-F0-074

BRACKET-DRAIN SUPPORT
156189-01-CHT
LUMBER
052372-F0-094

SINK-GALLEY
00013705 / 311763-01-CHT
SEAL
091255-03-000 (2130)
STRAINER-SINK
092303-01-000 (2)
SCREW
000G13-07-12U (6)

NIPPLE-PLASTIC
010129-02-000

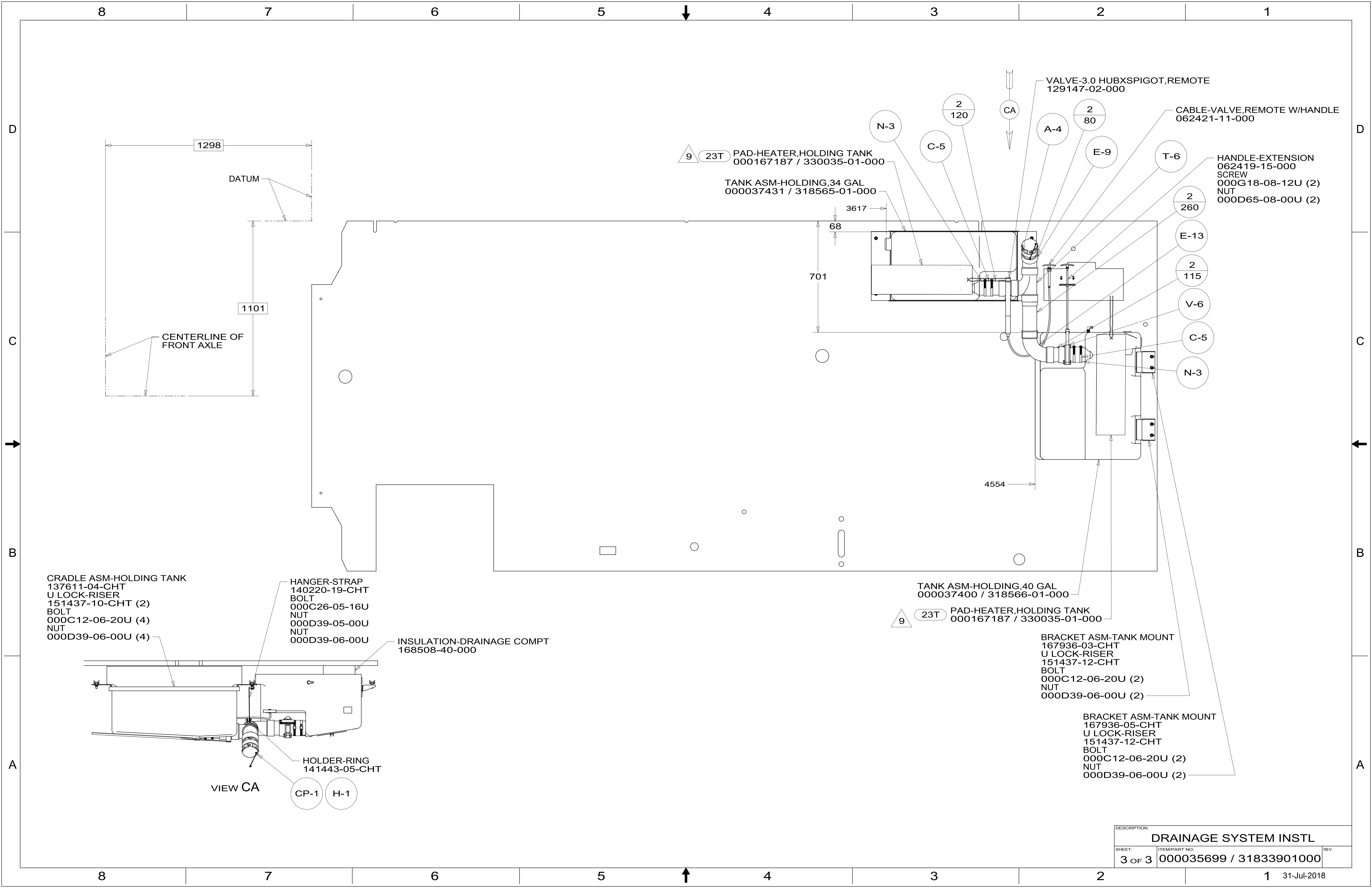
SINK-LAVATORY
151679-01-CHT
SEAL
091255-03-000 (940)
STRAINER
163569-01-000
TAIL PIECE
000167613 / 330149-01-000

SHOWER
147883-01-000
STRAINER
066440-01-000
TAIL PIECE
000168001 / 330239-01-000

TOILET-RESIDENCE,HI,W/O SPR
184093-02-CHT

STRAP-CONDUIT-2 IN 2 HOLE
008406-01-000

DESCRIPTION: DRAINAGE SYSTEM INSTL		
SHEET: 2 OF 3	ITEM/PART NO: 000035699 / 31833901000	REV
		31-Jul-2018



DESCRIPTION:		
DRAINAGE SYSTEM INSTL		
SHEET:	ITEM/PART NO:	REV
3 OF 3	000035699 / 31833901000	