

- NOTES:
- 8 MHP TO INSTALL ON VALVE STEMS PER MANUFACTURER'S INSTRUCTIONS.
 - 7 MOUNT ANTENNA WITH SUPPLIED BRACKET AND SCREWS. ROUTE ANTENNA WIRE ALONG DS FRAME RAIL AND SECURE WITH OTHER LOOMS. ROUTE UP DS A-PILLAR AND COIL EXCESS AT TOP.
 - 6 CLAMP 83610-01-000, SCREW G39-08-12U
 - 5 CLAMP 10497-03-000, SCREW G39-08-12U
 - 4 USE TIE-WIRE 8343-04-000 TO SECURE WIRES TO FLOOR SUPPORT FRAME AT LEAST ONCE EVERY 600MM.
 - 3 REST WIRE IN FRAME RAIL WHEN APPLICABLE.
 - 2 SEE WIRING INSTL-FRONT END FOR ADDITIONAL INFORMATION.
 - 1 SEE WIRE ASM-CHASSIS FOR ADDITIONAL INFORMATION.

- 38M TIRE MONITORING SYSTEM
- 265 CODES/STANDARDS-CSA/CMVSS
- 1B1 CODES/STANDARDS USA

WINNEBAGO COPYRIGHT 2016 WINNEBAGO INDUSTRIES, INC.	
DSNR:	ALL DIMENSIONS ARE IN MILLIMETERS
DFFR:	MATERIAL:
UNSPECIFIED TOLERANCES:	WEIGHT: (LBS)
WHOLE DIM (X) : 3	FIRST USED:
ONE-PLACE (X.X) : 1.5	18 P42Q
TWO-PLACE (X.XX) : 0.50	
ANGLE : 1°	
REFER TO ES0018 FOR FASTENER TIGHTENING GUIDELINES	
WIRING INSTL-CHASSIS	
SHEET: 1 OF 7	ITEM/PART NO: 000035054 / 31793601000
REV:	REF:

FOR ELECTRICAL TORQUE SPECIFICATIONS SEE DWG NO. 128783-01-000

X-X

FOR ELECTRICAL CALLOUTS SEE DWG NO. 121339-01-000

8

7

6

5

4

3

2

1



		ITEM
CABLE ASM (YEL) FROM COACH BATTERY FUSE TO STUD-JUMP START,RED	175207-52-073	1
CABLE ASM (YEL) FROM STUD-JUMP START,RED TO COACH SIDE OF AUX START SOLENOID	175207-52-003	2
CABLE ASM (ORG) FROM COACH BATTERY TO INVERTER FUSE	175207-66-005	3
CABLE ASM (BLK) FROM STUD-JUMP START,BLK TO FRAME RAIL GROUND	175211-01-009	4
CABLE ASM (ORG) FROM INVERTER FUSE TO INVERTER DISCONNECT	175207-67-024	5
CABLE ASM (ORG) FROM INVERTER DISCONNECT TO INVERTER	175207-65-004	17
CABLE ASM (BLK) FROM BATTERY TO INVERTER	175211-01-027	6
CABLE ASM (BLK) FROM COACH BATTERY TO FRAME RAIL GROUND	175211-02-072	7
CABLE ASM (PUR) FROM DISCONNECT SOLENOID TO CHASSIS FUSE PANEL	175207-15-010	8
CABLE ASM (PUR) FROM BATTERY SIDE OF DISCONNECT SOLENOID TO CHASSIS BATTERY FUSE	175207-15-007	9
CABLE ASM (BLU) FROM CHASSIS DISCONNECTED POWER FUSE TO LEVELING SYSTEM POWER	141416-26-120	10
CABLE ASM (BLK) FROM LEVELING SYSTEM TO FRAME RAIL GROUND	133567-11-004	1
CABLE ASM (GRN) FROM BAT DISC RELAY TO PASS THRU STUD	175207-42-143	11
CABLE ASM (GRN) FROM PASS THRU STUD TO GENERATOR	175207-42-031	22
CABLE ASM (BLK) FROM GENERATOR TO FRAME RAIL GROUND	175211-02-022	23
CABLE ASM (YEL) JUMPER BETWEEN POSITIVE POSTS ON COACH BATTERY	141417-52-004	12
	141417-51-002 (4)	13
CABLE ASM (BLK) JUMPER BETWEEN NEGATIVE POSTS ON COACH BATTERY	133568-12-004	14
	133568-11-002 (4)	15
CABLE ASM (RED) JUMPER BETWEEN POSITIVE POSTS IN LEFT FRONT COMPT	141417-32-002	2
CABLE ASM-TEMPERATURE,BATTERY	175385-03-000	16
CABLE ASM (YEL) FROM BATTERY TO BATTERY FUSE	175207-52-010	18
CABLE ASM (PUR) FROM BATTERY TO BATTERY FUSE	CHASSIS SUPPLIED	19
CABLE ASM (YEL) FROM COACH DISCONNECT TO MULTIPLEX BREAKER	141415-57-004	20
CABLE ASM (FROM COACH BREAKER TO MULTIPLEX PANEL)	189044-01-040	21
CABLE ASM (FROM MULTIPLEX PANEL TO MULTIPLEX PANEL)	189044-01-004	

D

D

C

C

B

B

A

A

- 2 SEE WIRING INSTL-FRONT END FOR ADDITIONAL INFORMATION.
- 1 SEE LEVELING SYSTEM INSTL FOR ADDITIONAL INFORMATION.

NOTES:

FOR ELECTRICAL TORQUE SPECIFICATIONS SEE DWG NO. 128783-01-000

FOR ELECTRICAL CALLOUTS SEE DWG NO. 121339-01-000

- 265 CODES/STANDARDS-CSA/CMVSS
- 1B1 CODES/STANDARDS USA

1B1 265

DESCRIPTION: **WIRING INSTL-CHASSIS**

SHEET: 2 OF 7 ITEM/PART NO: 000035054 / 31793601000 REV

8

7

6

5

4

3

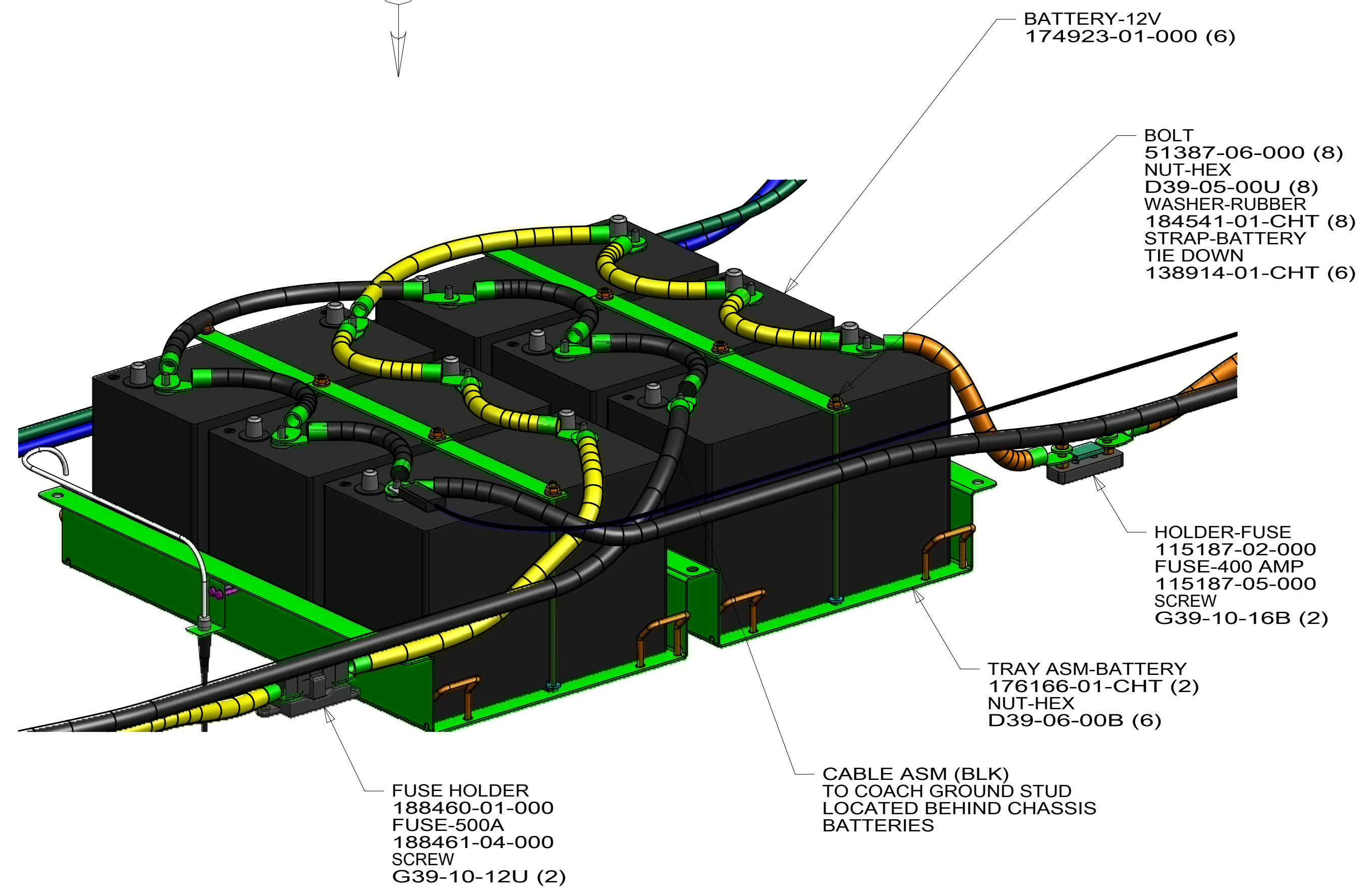
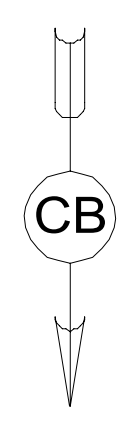
2

1

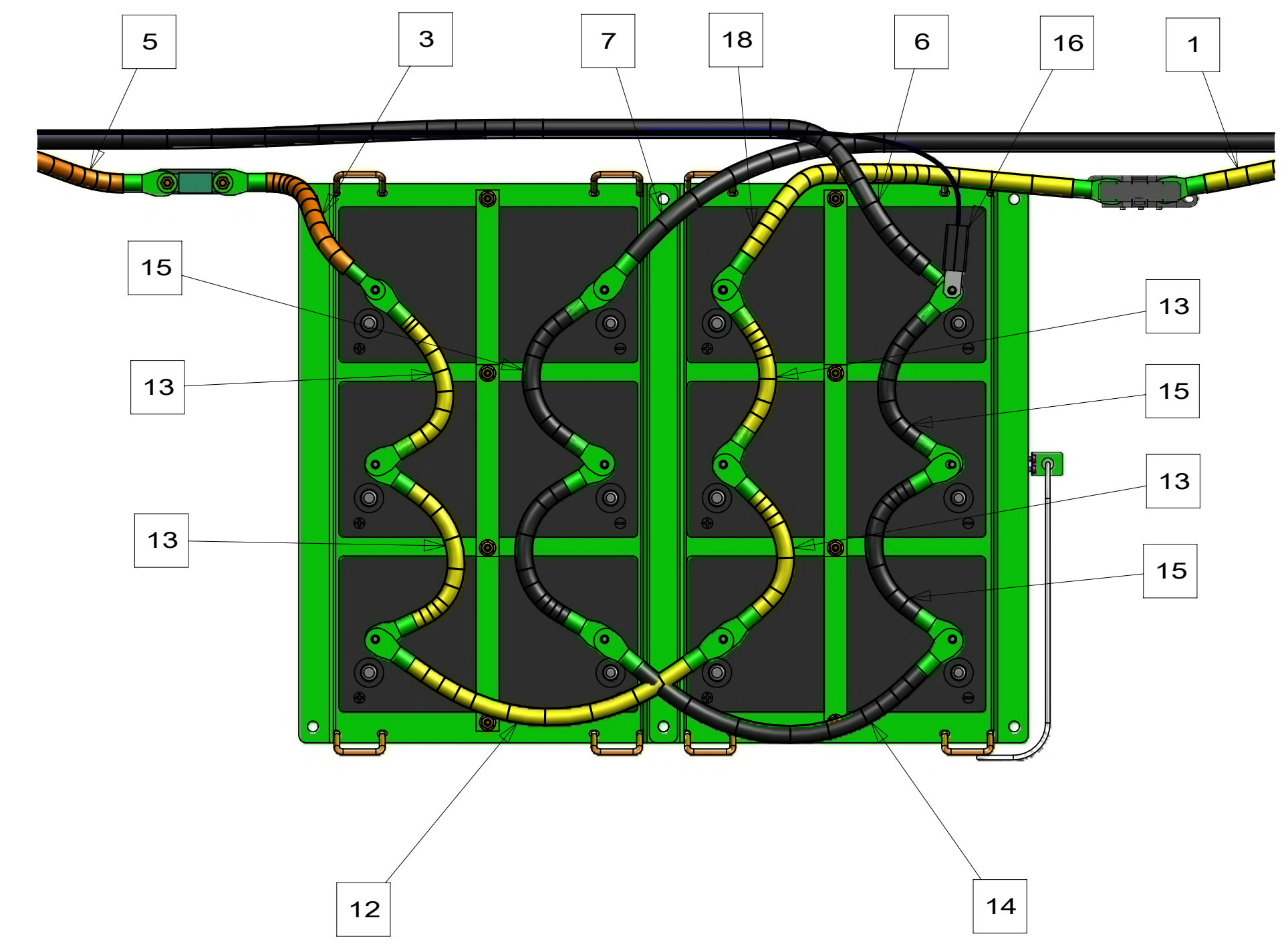


8 7 6 5 4 3 2 1

D
C
B
A



VIEW CA



VIEW CB

265 CODES/STANDARDS-CSA/CMVSS
1B1 CODES/STANDARDS USA

FOR ELECTRICAL
TORQUE
SPECIFICATIONS
SEE DWG NO.
128783-01-000

FOR
ELECTRICAL
CALLOUTS
SEE DWG NO.
121339-01-000

DESCRIPTION:	
1B1 265	
WIRING INSTL-CHASSIS	
SHEET:	ITEM/PART NO:
3 OF 7	000035054 / 31793601000
REV	

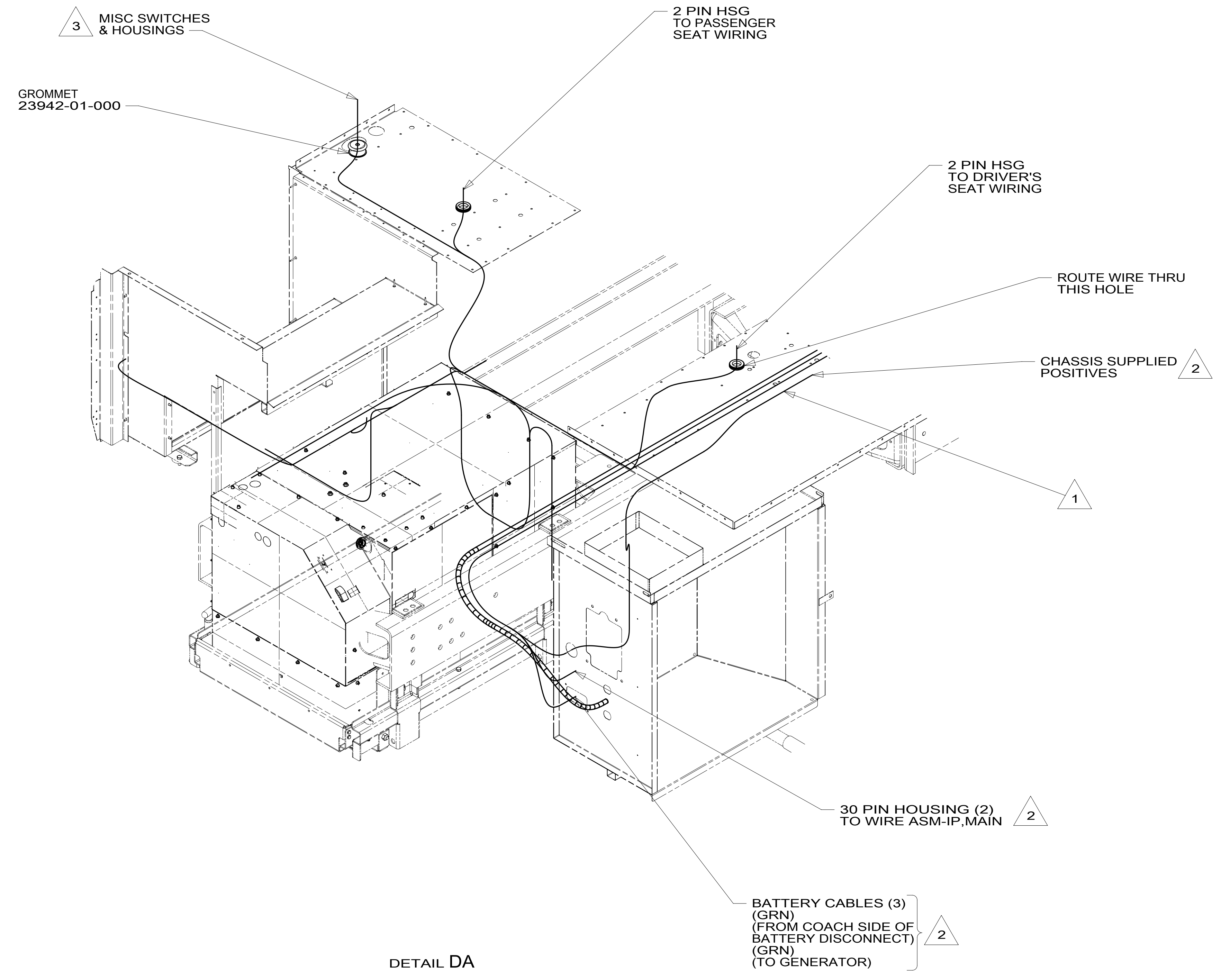
8 7 6 5 4 3 2 1

D
C
B
A



8 7 6 5 4 3 2 1

D
C
B
A



- NOTES:
- 3 SEE WIRE ASM-CHASSIS FOR ADDITIONAL INFORMATION.
 - 2 SEE WIRING INSTL-FRONT END FOR ADDITIONAL INFORMATION.
 - 1 USE PLUG-PLASTIC 61420-12-000 FOR UNUSED HOLE & SEAL.

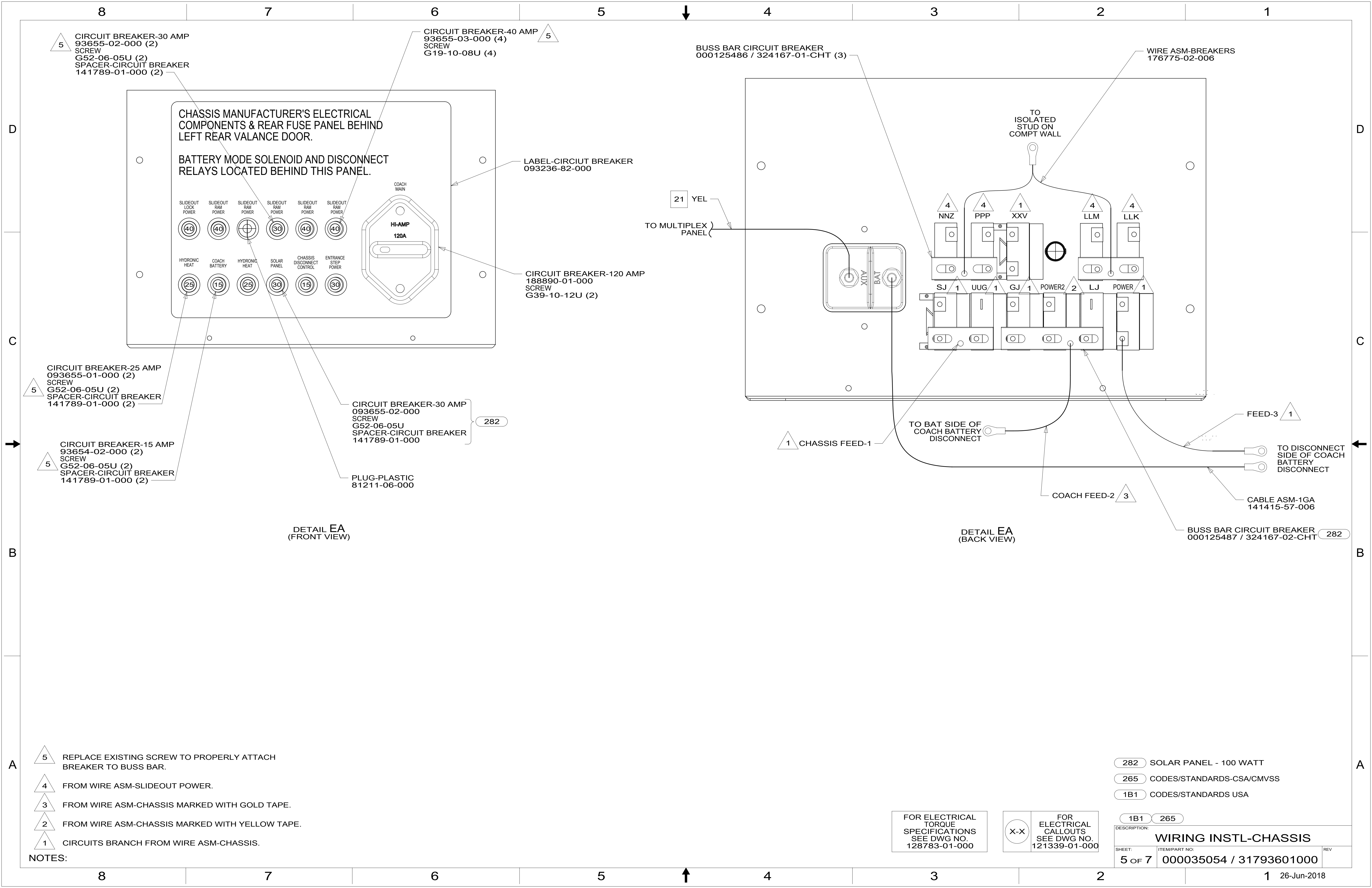
FOR ELECTRICAL TORQUE SPECIFICATIONS SEE DWG NO. 128783-01-000

FOR ELECTRICAL CALLOUTS SEE DWG NO. 121339-01-000

265 CODES/STANDARDS-CSA/CMVSS
1B1 CODES/STANDARDS USA

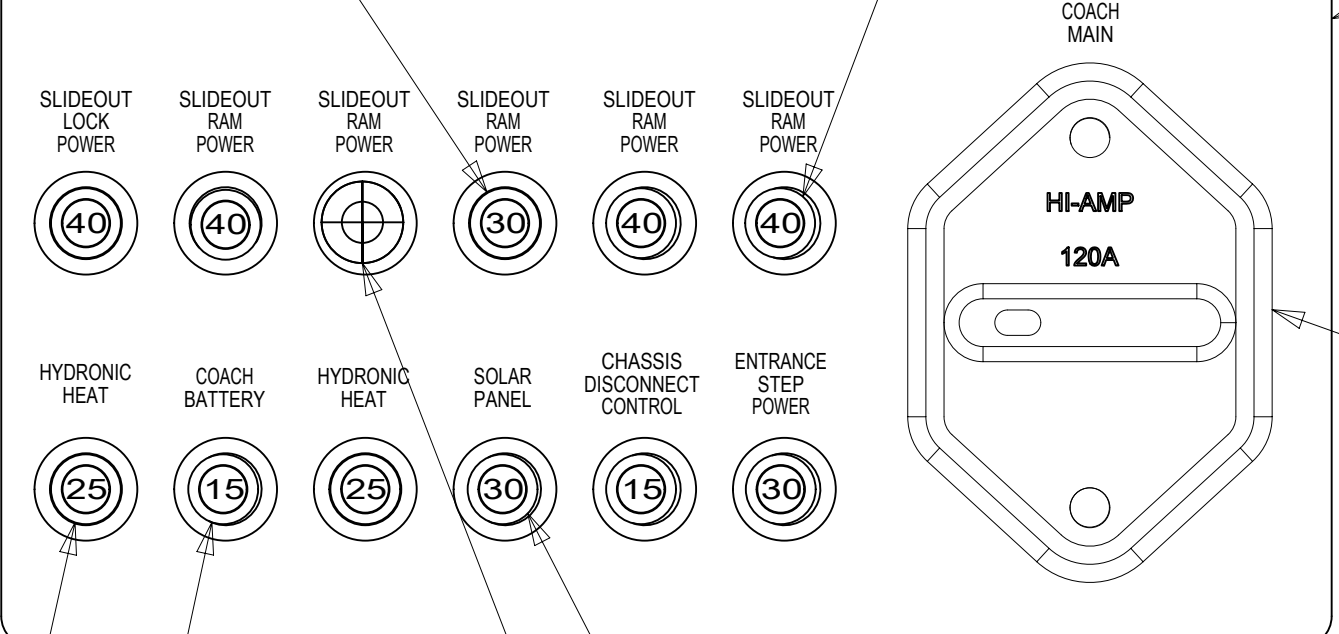
DESCRIPTION:		1B1 265	
WIRING INSTL-CHASSIS			
SHEET:	ITEM/PART NO.:	REV	
4 OF 7	000035054 / 31793601000		

8 7 6 5 4 3 2 1 26-Jun-2018



CHASSIS MANUFACTURER'S ELECTRICAL COMPONENTS & REAR FUSE PANEL BEHIND LEFT REAR VALANCE DOOR.

BATTERY MODE SOLENOID AND DISCONNECT RELAYS LOCATED BEHIND THIS PANEL.



CIRCUIT BREAKER-40 AMP
93655-03-000 (4)
SCREW
G19-10-08U (4)

CIRCUIT BREAKER-30 AMP
93655-02-000 (2)
SCREW
G52-06-05U (2)
SPACER-CIRCUIT BREAKER
141789-01-000 (2)

BUSS BAR CIRCUIT BREAKER
000125486 / 324167-01-CHT (3)

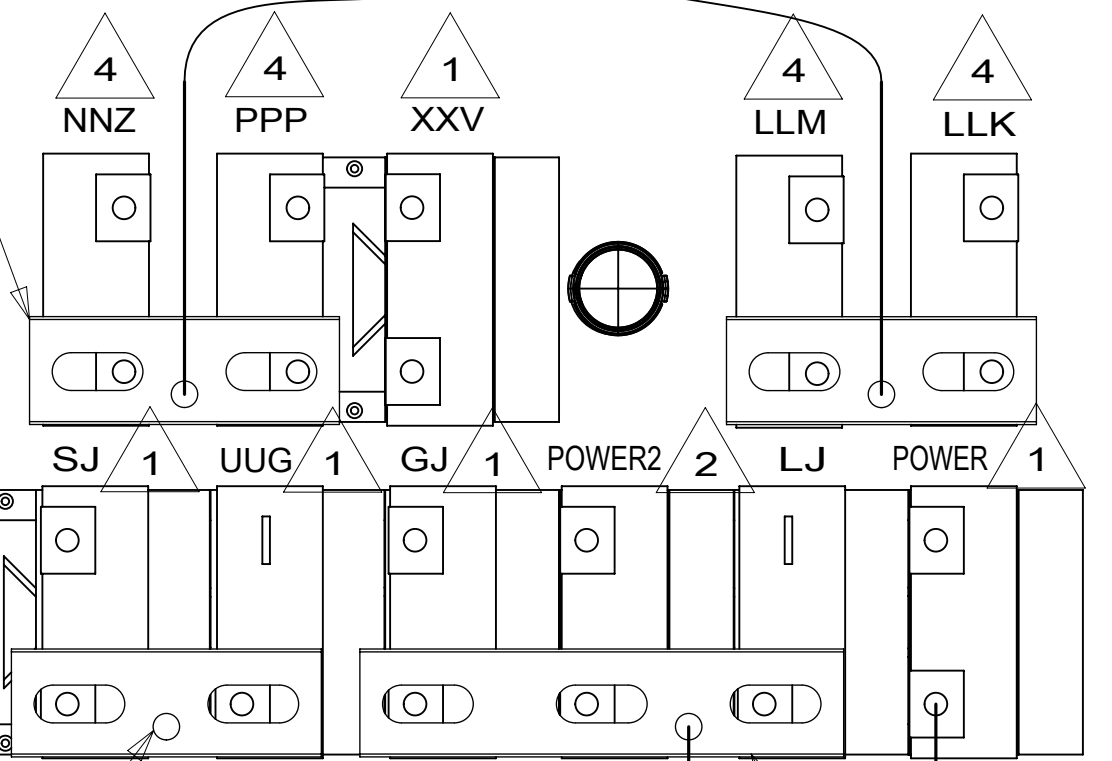
WIRE ASM-BREAKERS
176775-02-006

LABEL-CIRCUIT BREAKER
093236-82-000

CIRCUIT BREAKER-120 AMP
188890-01-000
SCREW
G39-10-12U (2)

21 YEL
TO MULTIPLEX
PANEL

TO ISOLATED
STUD ON
COMPT WALL



CIRCUIT BREAKER-25 AMP
093655-01-000 (2)
SCREW
G52-06-05U (2)
SPACER-CIRCUIT BREAKER
141789-01-000 (2)

CIRCUIT BREAKER-30 AMP
093655-02-000
SCREW
G52-06-05U
SPACER-CIRCUIT BREAKER
141789-01-000

PLUG-PLASTIC
81211-06-000

DETAIL EA
(FRONT VIEW)

DETAIL EA
(BACK VIEW)

1 CHASSIS FEED-1

COACH FEED-2 3

FEED-3 1

TO DISCONNECT
SIDE OF COACH
BATTERY
DISCONNECT

CABLE ASM-1GA
141415-57-006

BUSS BAR CIRCUIT BREAKER
000125487 / 324167-02-CHT 282

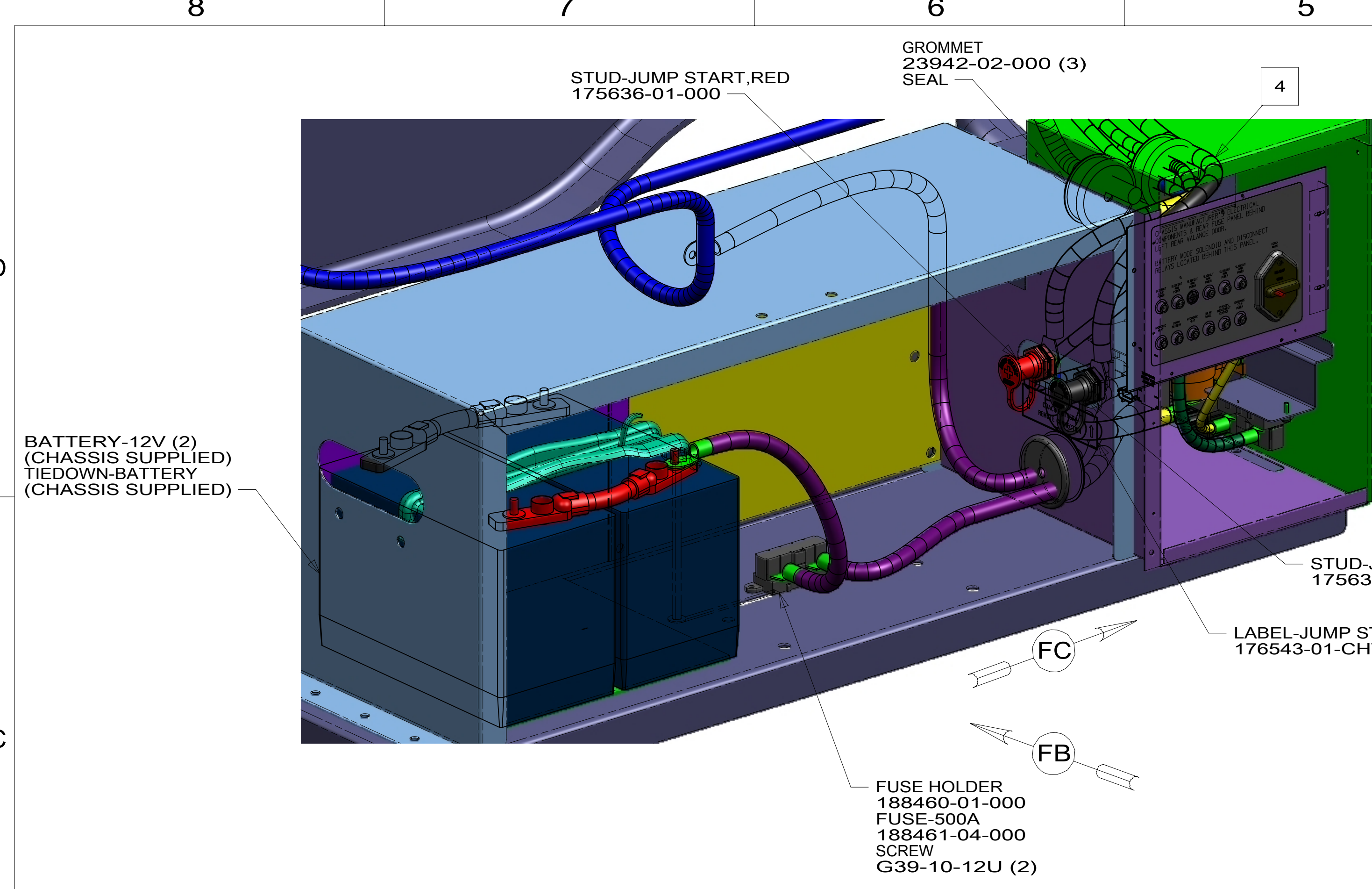
- NOTES:
- 5 REPLACE EXISTING SCREW TO PROPERLY ATTACH BREAKER TO BUSS BAR.
 - 4 FROM WIRE ASM-SLIDEOUT POWER.
 - 3 FROM WIRE ASM-CHASSIS MARKED WITH GOLD TAPE.
 - 2 FROM WIRE ASM-CHASSIS MARKED WITH YELLOW TAPE.
 - 1 CIRCUITS BRANCH FROM WIRE ASM-CHASSIS.

- 282 SOLAR PANEL - 100 WATT
- 265 CODES/STANDARDS-CSA/CMVSS
- 1B1 CODES/STANDARDS USA

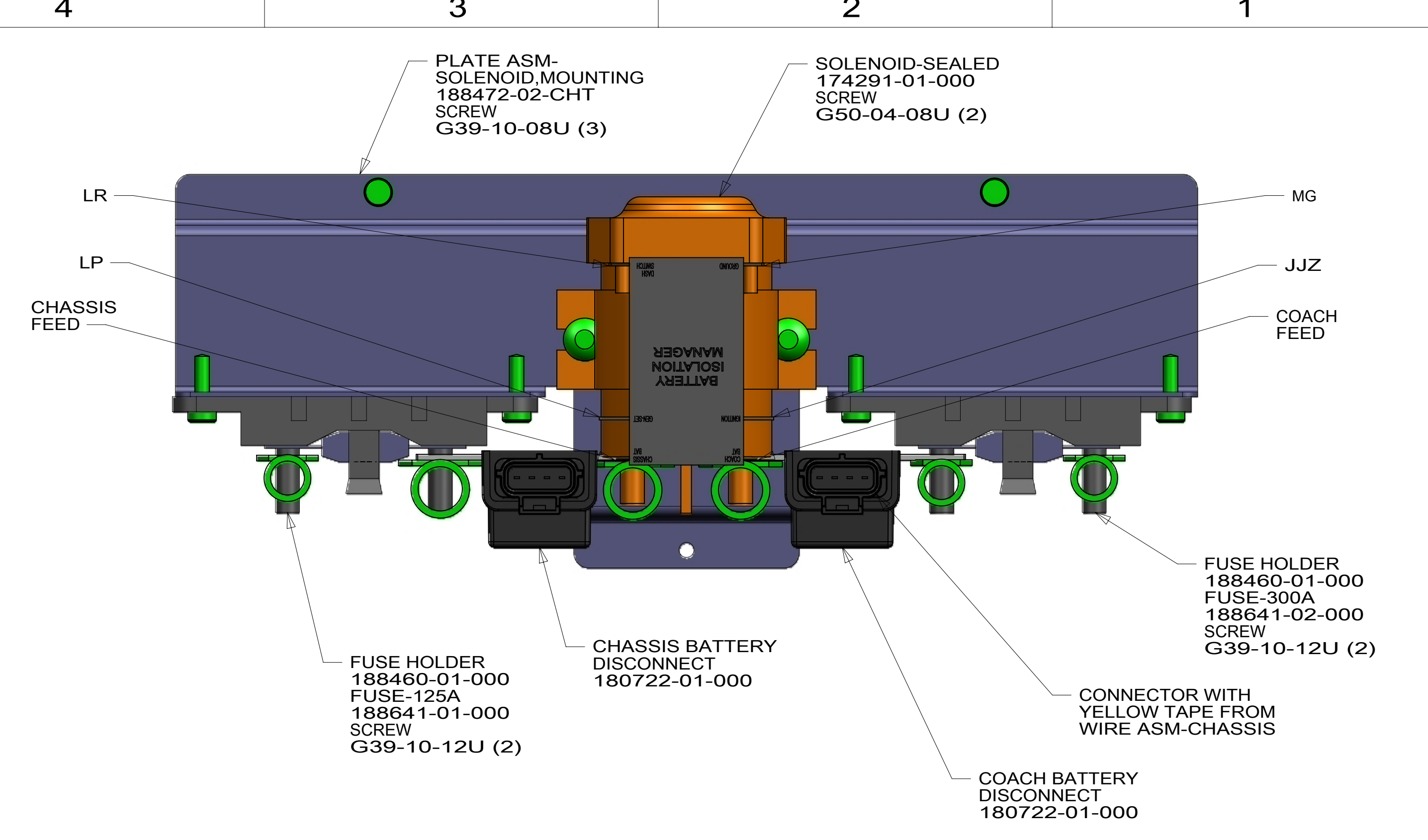
FOR ELECTRICAL
TORQUE
SPECIFICATIONS
SEE DWG NO.
128783-01-000

FOR ELECTRICAL
CALLOUTS
SEE DWG NO.
121339-01-000

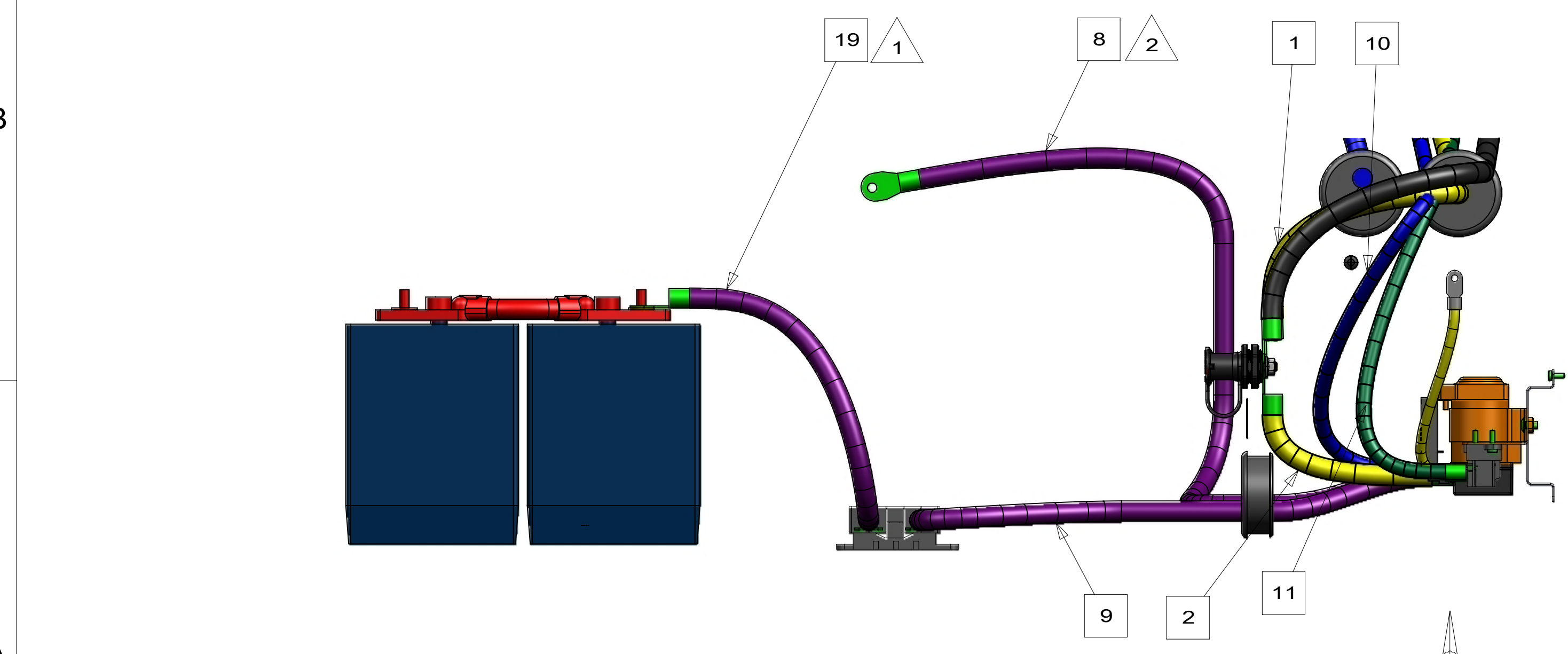
DESCRIPTION: WIRING INSTL-CHASSIS	
SHEET: 5 OF 7	ITEM/PART NO: 000035054 / 31793601000
REV	



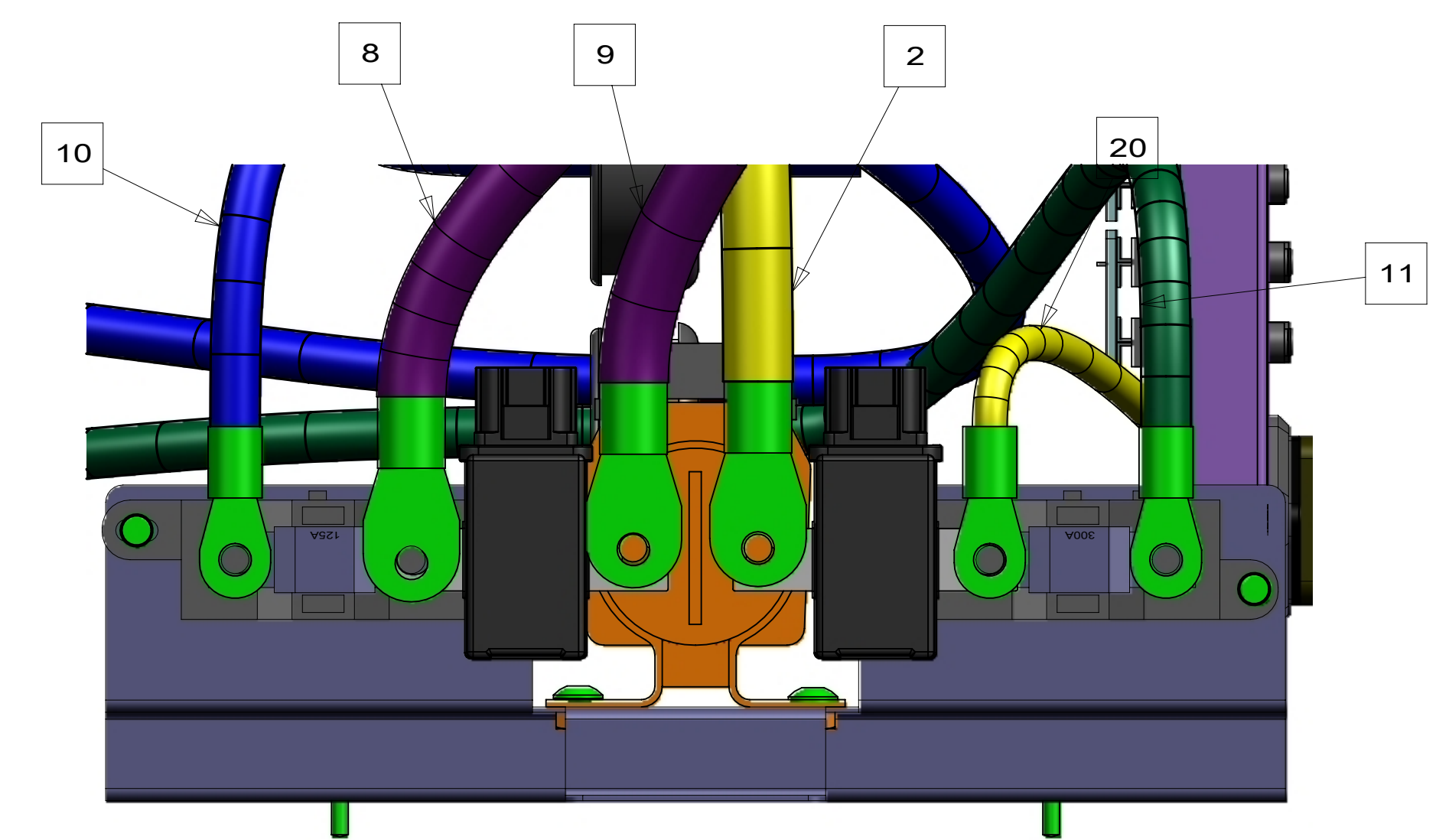
VIEW FA



VIEW FC



VIEW FB



VIEW FD

NOTES:

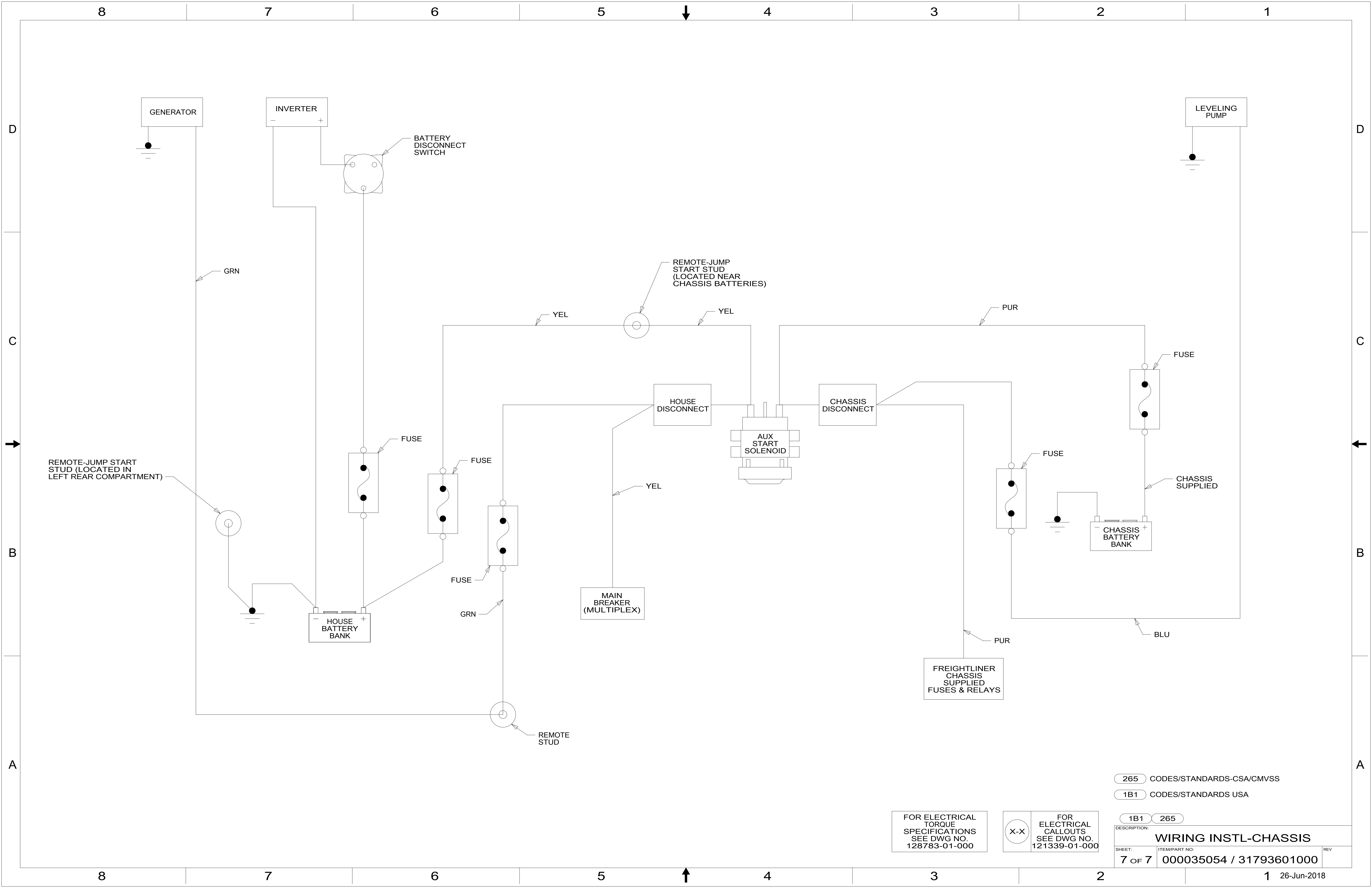
2 PUR CABLE REPLACES CHASSIS SUPPLIED CABLE.

1 REMOVE CABLE FROM CHASSIS PANEL AND INSTALL AS SHOWN ON FUSE.

FOR ELECTRICAL TORQUE SPECIFICATIONS SEE DWG NO. 128783-01-000

FOR ELECTRICAL CALLOUTS SEE DWG NO. 121339-01-000

265	CODES/STANDARDS-CSA/CMVSS
1B1	CODES/STANDARDS USA
1B1	265
DESCRIPTION: WIRING INSTL-CHASSIS	
SHEET: 6 OF 7	ITEM/PART NO: 000035054 / 31793601000
REV 1 26-Jun-2018	



265 CODES/STANDARDS-CSA/CMVSS

1B1 CODES/STANDARDS USA

1B1 265

FOR ELECTRICAL TORQUE SPECIFICATIONS SEE DWG NO. 128783-01-000

FOR ELECTRICAL CALLOUTS SEE DWG NO. 121339-01-000

DESCRIPTION: **WIRING INSTL-CHASSIS**

SHEET: 7 OF 7 ITEM/PART NO: 000035054 / 31793601000 REV