

8 7 6 5 4 3 2 1

D

C

B

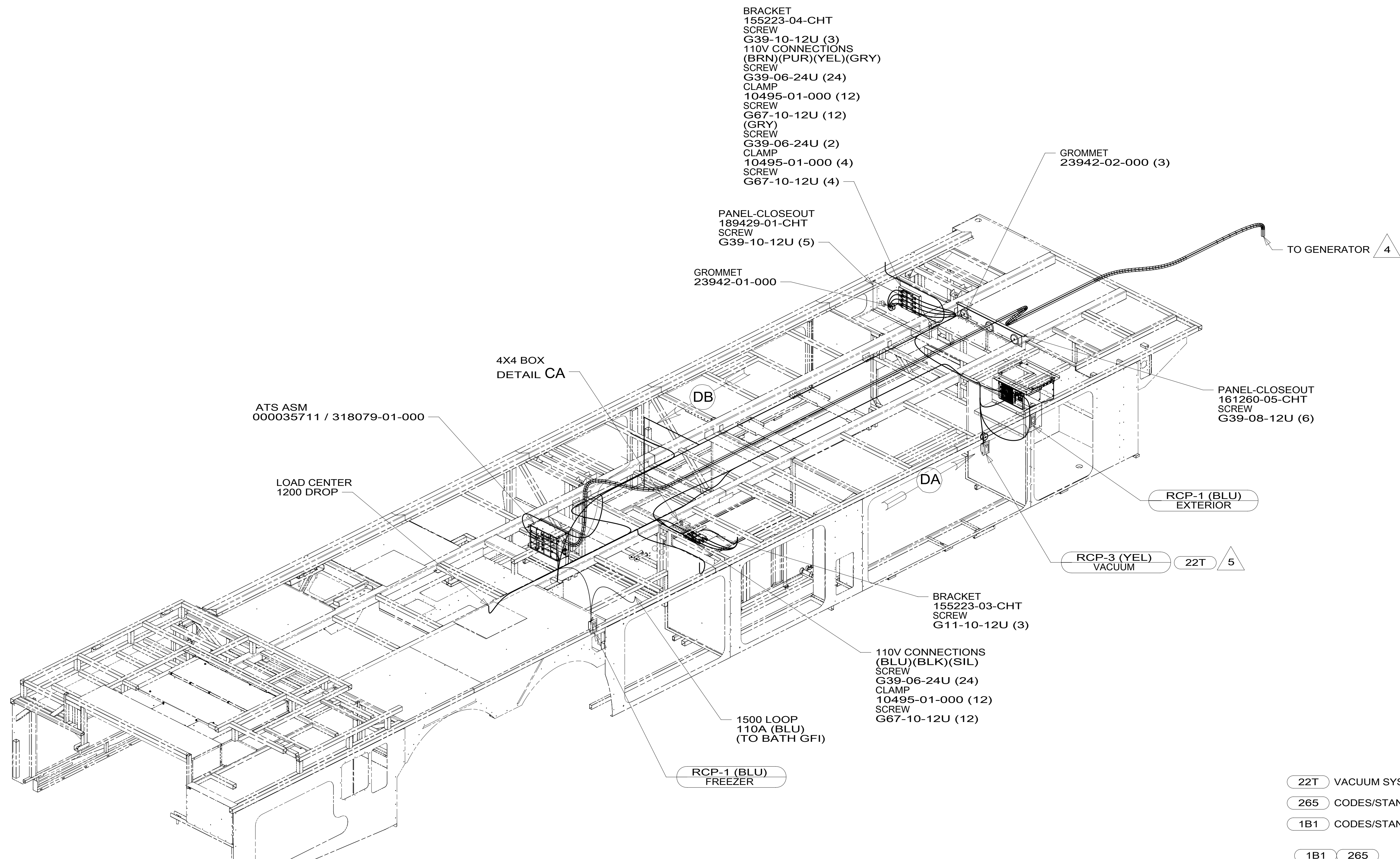
A

D

C

B

A



BRACKET  
155223-04-CHT  
SCREW  
G39-10-12U (3)  
110V CONNECTIONS  
(BRN)(PUR)(YEL)(GRY)  
SCREW  
G39-06-24U (24)  
CLAMP  
10495-01-000 (12)  
SCREW  
G67-10-12U (12)  
(GRY)  
SCREW  
G39-06-24U (2)  
CLAMP  
10495-01-000 (4)  
SCREW  
G67-10-12U (4)

GROMMET  
23942-02-000 (3)

PANEL-CLOSEOUT  
189429-01-CHT  
SCREW  
G39-10-12U (5)

GROMMET  
23942-01-000

4X4 BOX  
DETAIL CA

ATS ASM  
000035711 / 318079-01-000

LOAD CENTER  
1200 DROP

PANEL-CLOSEOUT  
161260-05-CHT  
SCREW  
G39-08-12U (6)

RCP-1 (BLU)  
EXTERIOR

RCP-3 (YEL)  
VACUUM

22T 5

BRACKET  
155223-03-CHT  
SCREW  
G11-10-12U (3)

110V CONNECTIONS  
(BLU)(BLK)(SIL)  
SCREW  
G39-06-24U (24)  
CLAMP  
10495-01-000 (12)  
SCREW  
G67-10-12U (12)

1500 LOOP  
110A (BLU)  
(TO BATH GFI)

RCP-1 (BLU)  
FREEZER

TO GENERATOR 4

5 WITHOUT 22T LEAVE LOOP AT FRAME RAIL.  
4 SEE GENERATOR INSTL FOR ADDITIONAL INFORMATION.

3. WIRES THAT REST ON WIRE TRAYS ARE TO BE TIED DOWN WITH WIRE TIE 8343-04-000.
2. CLAMP TO FLOOR SUPPORT TUBES AS NECESSARY WITH CLAMP 10497-01-000.
1. AT MINIMUM ALL WIRES TO BE SUPPORTED AND SECURED PER CODE REQUIREMENTS. USE CLAMP 10495 OR 10497 OR WIRE TIE 8343 OR 108046 AND SCREW G67-XX-XXX OR G56-XX-XXX AS APPROPRIATE FOR INSTALLATION.

NOTES:

- 22T VACUUM SYSTEM-CENTRAL
- 265 CODES/STANDARDS-CSA/CMVSS
- 1B1 CODES/STANDARDS USA

1B1 265



DSNR:		ALL DIMENSIONS ARE IN MILLIMETERS	
DFFR:		MATERIAL:	
UNSPECIFIED TOLERANCES:			
WHOLE DIM (X)	: 3		
ONE-PLACE (X.X)	: 1.5		
TWO-PLACE (X.XX)	: 0.50		
ANGLE	: 1°		
REFER TO ES0018 FOR FASTENER TIGHTENING GUIDELINES		WEIGHT: (LBS)	FIRST USED:
			18 P42Q

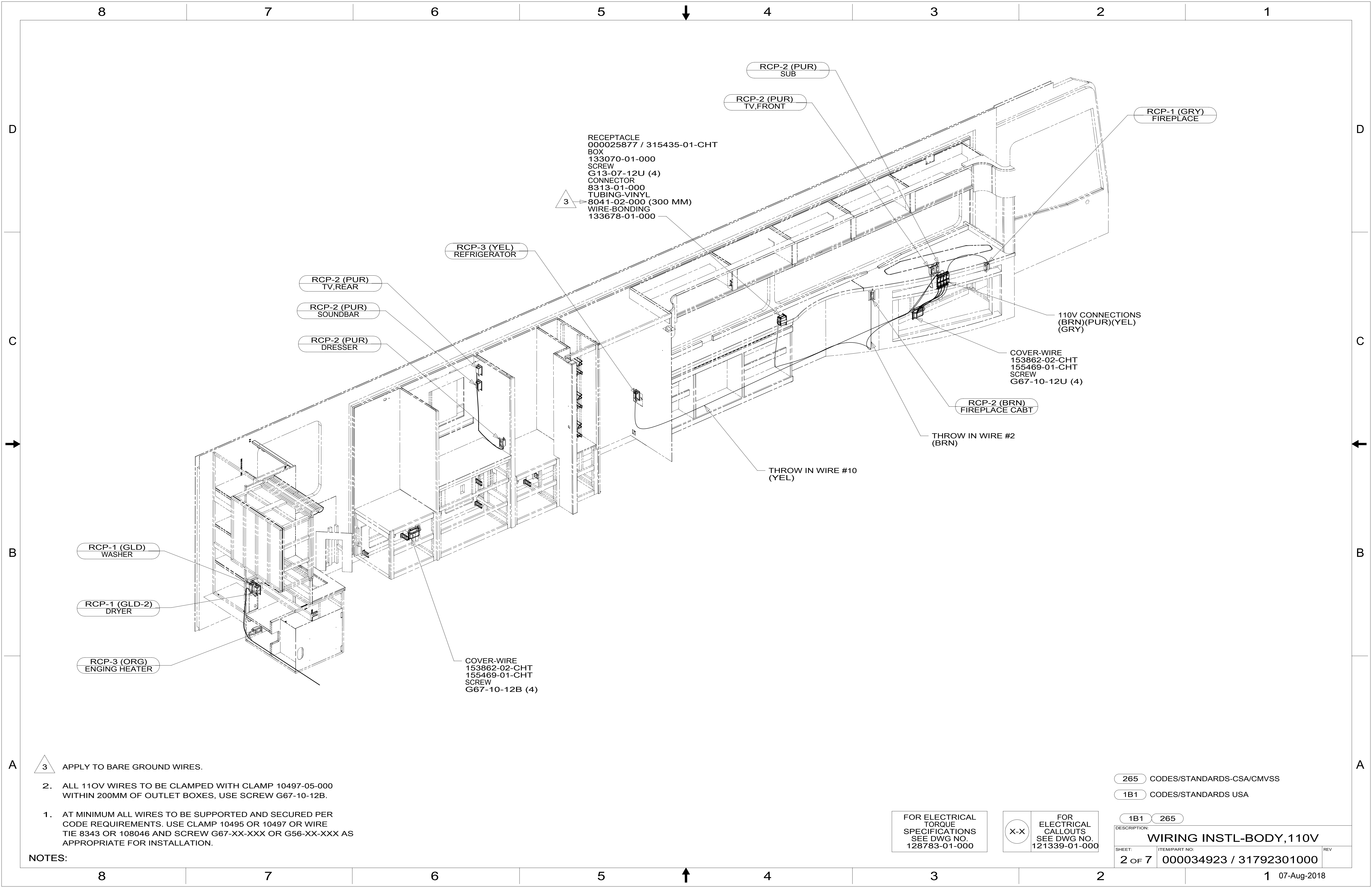
FOR ELECTRICAL TORQUE SPECIFICATIONS SEE DWG NO. 128783-01-000

FOR ELECTRICAL CALLOUTS SEE DWG NO. 121339-01-000

DESCRIPTION:  
**WIRING INSTL-BODY, 110V**

SHEET: 1 OF 7 ITEM/PART NO: 000034923 / 31792301000 REF: 1 07-Aug-2018

8 7 6 5 4 3 2 1



RECEPTACLE  
000025877 / 315435-01-CHT  
BOX  
133070-01-000  
SCREW  
G13-07-12U (4)  
CONNECTOR  
8313-01-000  
TUBING-VINYL  
8041-02-000 (300 MM)  
WIRE-BONDING  
133678-01-000

3

RCP-3 (YEL)  
REFRIGERATOR

RCP-2 (PUR)  
TV,REAR

RCP-2 (PUR)  
SOUNDBAR

RCP-2 (PUR)  
DRESSER

110V CONNECTIONS  
(BRN)(PUR)(YEL)  
(GRY)

COVER-WIRE  
153862-02-CHT  
155469-01-CHT  
SCREW  
G67-10-12U (4)

RCP-2 (BRN)  
FIREPLACE CABT

THROW IN WIRE #2  
(BRN)

THROW IN WIRE #10  
(YEL)

RCP-1 (GLD)  
WASHER

RCP-1 (GLD-2)  
DRYER

RCP-3 (ORG)  
ENGINE HEATER

COVER-WIRE  
153862-02-CHT  
155469-01-CHT  
SCREW  
G67-10-12B (4)

3 APPLY TO BARE GROUND WIRES.

2. ALL 110V WIRES TO BE CLAMPED WITH CLAMP 10497-05-000 WITHIN 200MM OF OUTLET BOXES, USE SCREW G67-10-12B.
1. AT MINIMUM ALL WIRES TO BE SUPPORTED AND SECURED PER CODE REQUIREMENTS. USE CLAMP 10495 OR 10497 OR WIRE TIE 8343 OR 108046 AND SCREW G67-XX-XXX OR G56-XX-XXX AS APPROPRIATE FOR INSTALLATION.

NOTES:

265 CODES/STANDARDS-CSA/CMVSS

1B1 CODES/STANDARDS USA

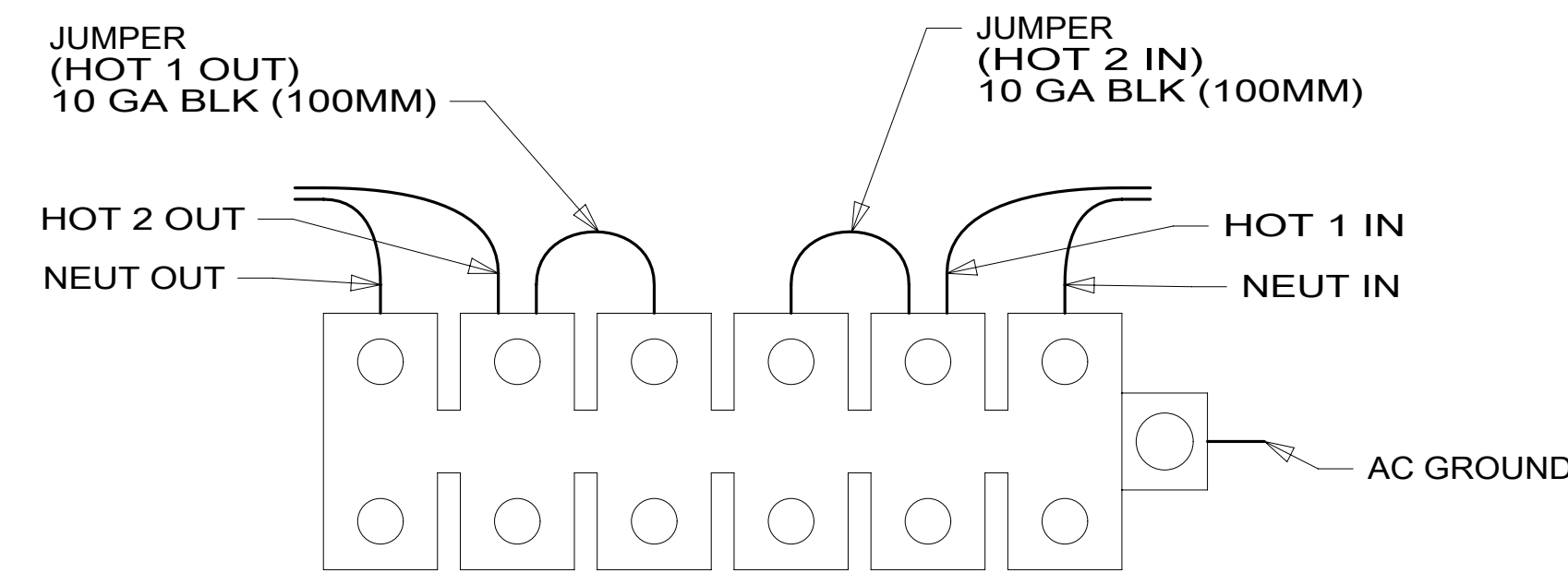
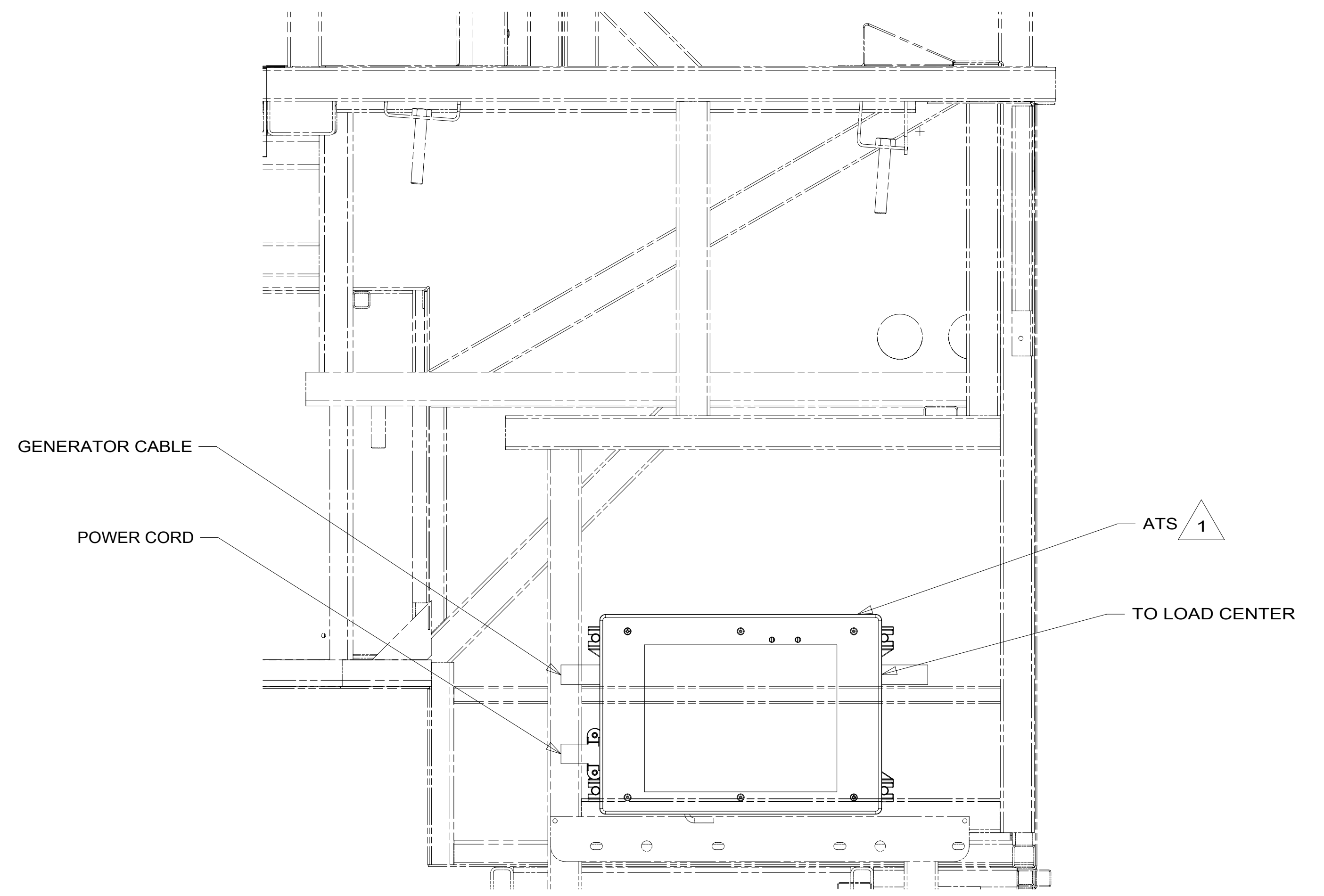
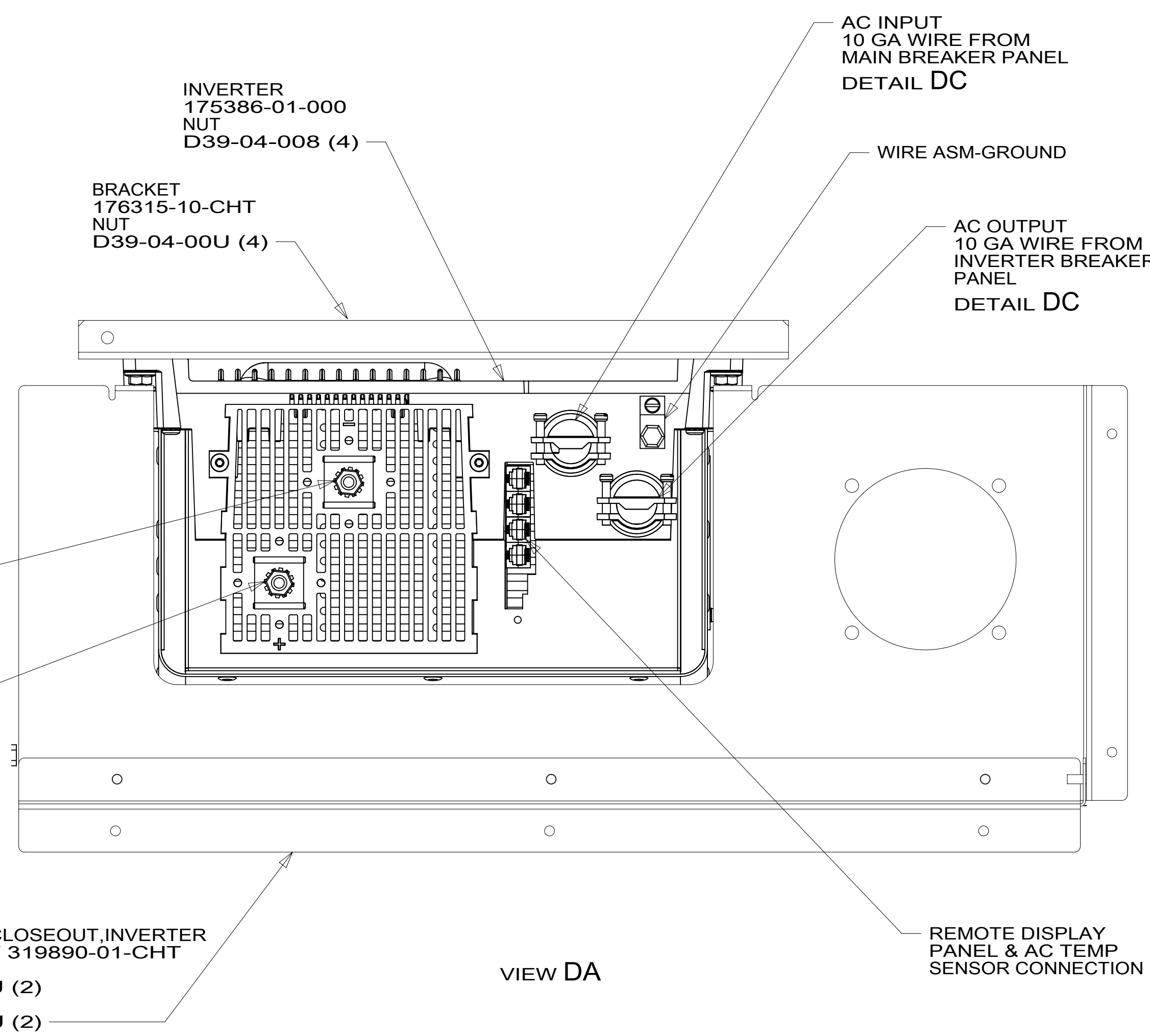
1B1 265

FOR ELECTRICAL  
TORQUE  
SPECIFICATIONS  
SEE DWG NO.  
128783-01-000

FOR ELECTRICAL  
CALLOUTS  
SEE DWG NO.  
121339-01-000

DESCRIPTION: <b>WIRING INSTL-BODY, 110V</b>		
SHEET: 2 OF 7	ITEM/PART NO: 000034923 / 31792301000	REV
		1 07-Aug-2018





- NOTES:
- 3 TORQUE TO 10-12 FT LBS.
  - 2 SEE BATTERY INSTL FOR ADDITIONAL INFORMATION.
  - 1 SEE LOAD CENTER/ATS ASM FOR ADDITIONAL INFORMATION.

FOR ELECTRICAL  
TORQUE  
SPECIFICATIONS  
SEE DWG NO.  
128783-01-000

FOR  
ELECTRICAL  
CALLOUTS  
SEE DWG NO.  
121339-01-000

- 265 CODES/STANDARDS-CSA/CMVSS
- 1B1 CODES/STANDARDS USA

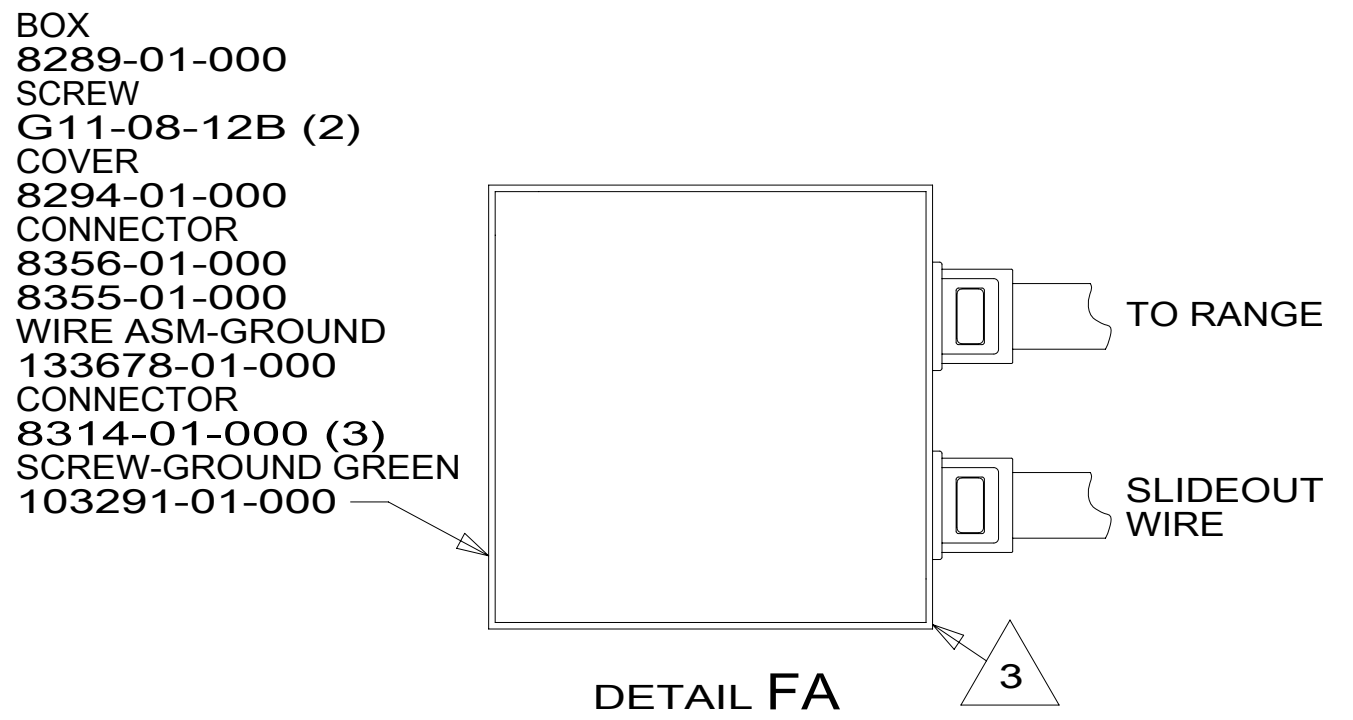
DESCRIPTION: <b>WIRING INSTL-BODY, 110V</b>	
SHEET: 4 OF 7	ITEM/PART NO: 000034923 / 31792301000
REV	



		R42QL
RED	1B1	136135-07-071
	265	136136-07-071
MAIN	1B1	174031-01-055
	265	174031-01-055
GRN	1B1	136135-08-071
	265	136136-08-071
LT BLU	1B1	136135-21-071
	265	136136-21-071
INVERTER CHARGER MAIN	1B1	136137-01-087
	265	136138-01-087
YEL	1B1	136131-05-131 <sup>1</sup>
	265	136134-05-131 <sup>1</sup>
GLD	1B1	136131-10-070
	265	136134-10-070
GLD-2	1B1	136131-20-070
	265	136134-20-070
WHT	1B1	136135-09-067
	265	136136-09-067
RANGE	1B1	136135-01-074 <sup>2</sup>
	265	136136-01-074 <sup>2</sup>

		R42QL
INVERTER CHARGER SUB MAIN	1B1	136137-01-087
	265	136138-01-087
BLU	1B1	136131-02-224 <sup>1</sup>
	265	136134-02-224 <sup>1</sup>
BRN	1B1	136131-03-098 <sup>1</sup>
	265	136134-03-098 <sup>1</sup>
PUR	1B1	136131-04-095 <sup>1</sup>
	265	136134-04-095 <sup>1</sup>
ORG	1B1	136131-16-070
	265	136134-16-070
BLK	1B1	136131-06-056 <sup>1</sup>
	265	136134-06-056 <sup>1</sup>
SIL	1B1	136131-11-056 <sup>1</sup>
	265	136134-11-056 <sup>1</sup>
GRY	1B1	136131-15-092 <sup>1</sup>
	265	136134-15-092 <sup>1</sup>
GROUND MAIN		136145-01-065
GROUND ATS		136145-01-030
GROUND INVERTER		136145-04-006
CABLE ASM GEN		174031-03-095

214



<sup>3</sup> CONNECT WIRES, WHT TO WHT, BLK TO BLK, GROUNDS TO GROUNDS, KEEPING CIRCUITS SEPERATED.

<sup>2</sup> SEE DETAIL FA FOR CONNECTOR INSTALLATION.

<sup>1</sup> SEE DETAIL GA FOR CONNECTOR INSTALLATION.

NOTES:

- 214 DISHWASHER DRAWER STYLE
- 265 CODES/STANDARDS-CSA/CMVSS
- 1B1 CODES/STANDARDS USA

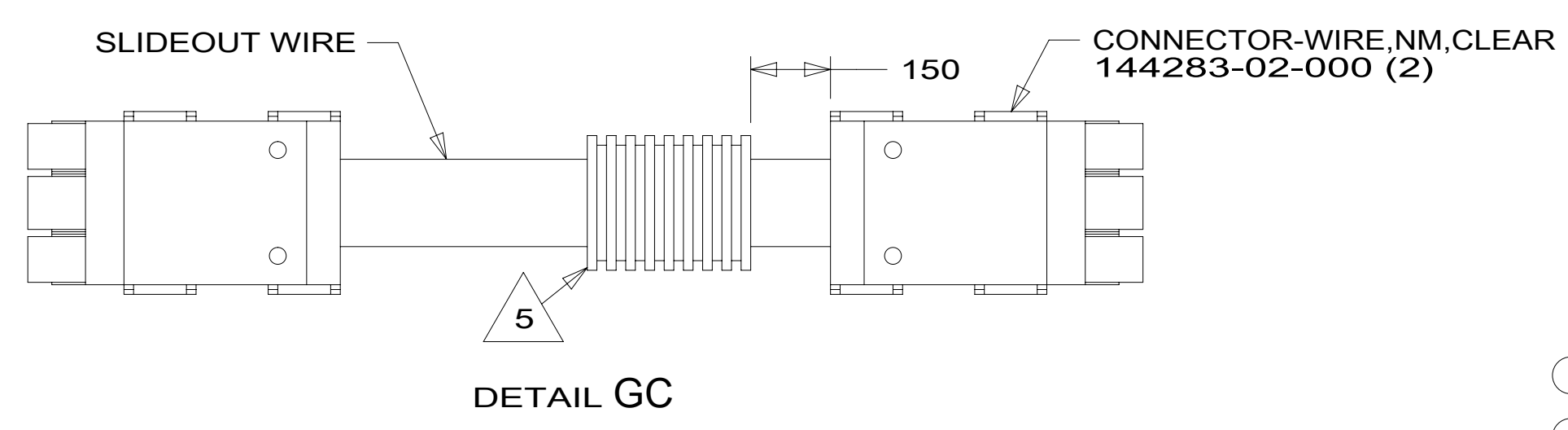
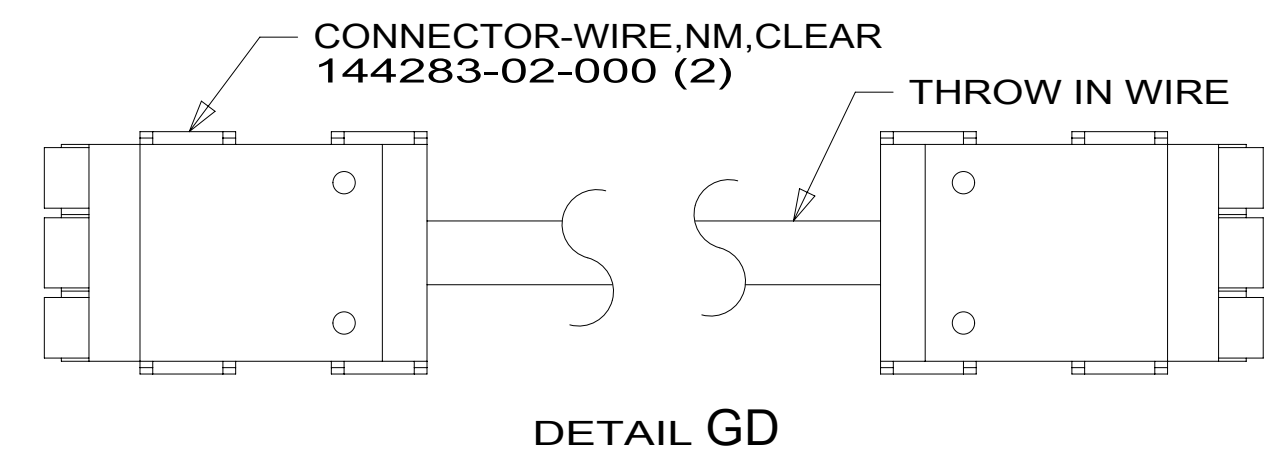
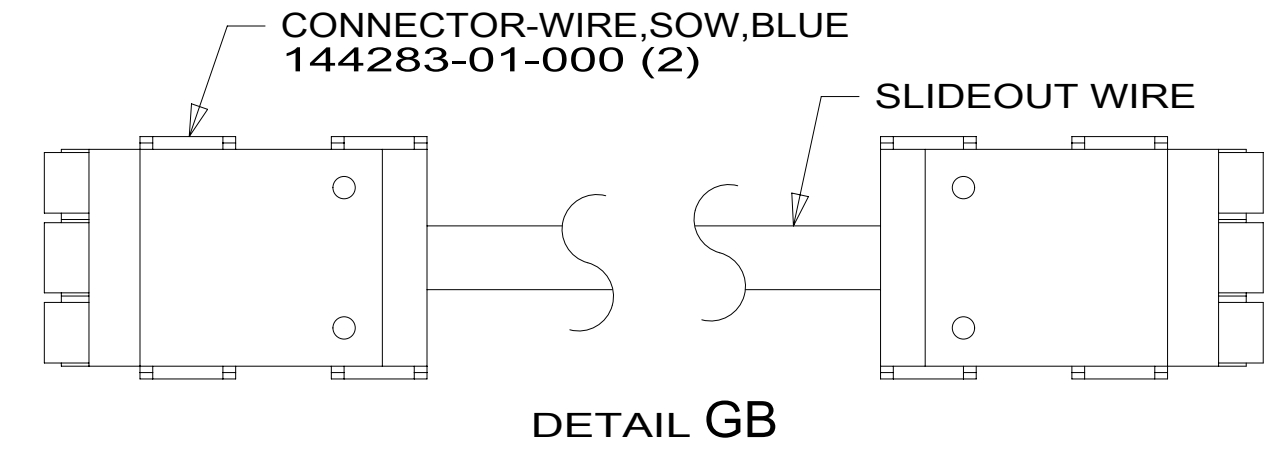
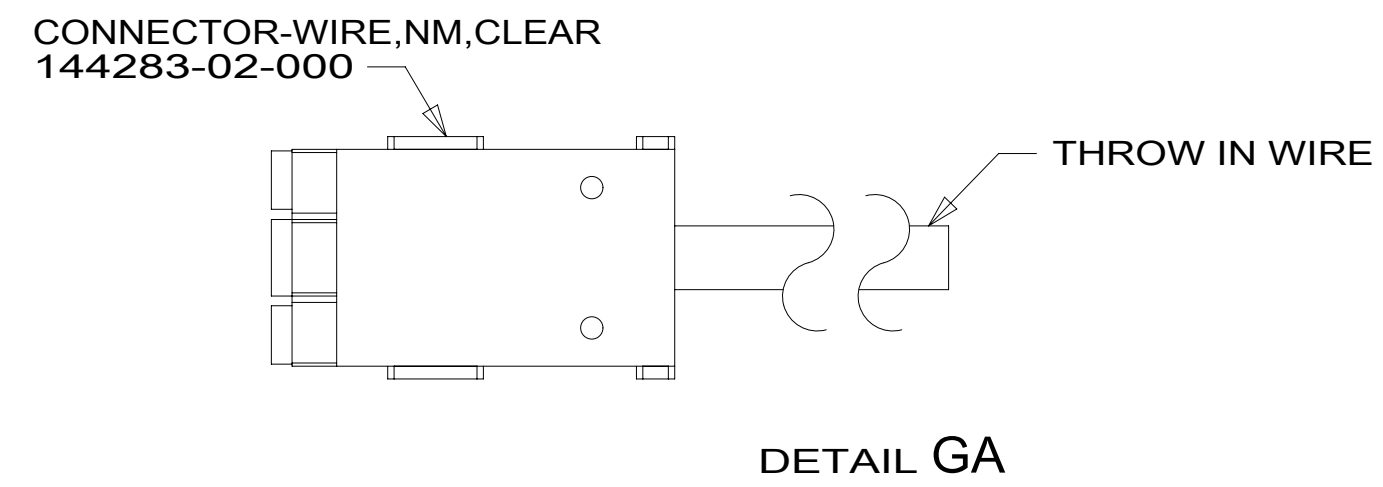
FOR ELECTRICAL TORQUE SPECIFICATIONS SEE DWG NO. 128783-01-000

FOR ELECTRICAL CALLOUTS SEE DWG NO. 121339-01-000

DESCRIPTION: <b>WIRING INSTL-BODY, 110V</b>	
SHEET: <b>6 OF 7</b>	ITEM/PART NO.: <b>000034923 / 31792301000</b>
REV <b>1 07-Aug-2018</b>	

SLIDEOUT WIRE #1		136151-03-025	△ 4
SLIDEOUT WIRE #2		136151-04-025	△ 4
SLIDEOUT WIRE #3		136151-05-025	△ 4
SLIDEOUT WIRE #4		136151-15-025	△ 4
SLIDEOUT WIRE #5		136152-01-042	△ 3
SLIDEOUT WIRE #6		136151-04-022	△ 2
SLIDEOUT WIRE #7		136151-02-040	△ 2
SLIDEOUT WIRE #8		136151-06-040	△ 2
SLIDEOUT WIRE #9		136151-11-040	△ 2 (214)
THROW IN WIRE #1	1B1	136131-03-060	
	265	136134-03-060	
THROW IN WIRE #2	1B1	136131-03-045	△ 1
	265	136134-03-045	△ 1
THROW IN WIRE #3	1B1	136135-01-017	
	265	136136-01-017	

THROW IN WIRE #4	1B1	136131-04-030	
	265	136134-04-030	
THROW IN WIRE #5	1B1	136131-04-068	△ 1
	265	136134-04-068	△ 1
THROW IN WIRE #6	1B1	136131-04-070	△ 1
	265	136134-04-070	△ 1
THROW IN WIRE #7	1B1	136131-15-015	△ 1
	265	136134-15-015	△ 1
THROW IN WIRE #8	1B1	136131-02-055	△ 1
	265	136134-02-055	△ 1
THROW IN WIRE #9	1B1	136131-11-015	△ 1 (214)
	265	136134-11-015	△ 1 (214)
THROW IN WIRE #10	1B1	136131-05-050	△ 1
	265	136134-05-050	△ 1
THROW IN WIRE #11	1B1	136131-01-028	△ 1
	265	136134-01-028	△ 1
THROW IN WIRE #12	1B1	136131-04-016	△ 1
	265	136134-04-016	△ 1



- NOTES:
- △ 5 APPLY 300MM OF CONDUIT-CONVOLUTE 41953-05-000 OVER WIRE AT DIMENSION SHOWN AND SECURE BOTH ENDS OF TUBING TO WIRE WITH TAPE 8363-01-000.
  - △ 4 SEE DETAIL GC FOR CONNECTOR INSTALLATION.
  - △ 3 SEE DETAIL GD FOR CONNECTOR INSTALLATION.
  - △ 2 SEE DETAIL GB FOR CONNECTOR INSTALLATION.
  - △ 1 SEE DETAIL GA FOR CONNECTOR INSTALLATION.

- (214) DISHWASHER DRAWER STYLE
- (265) CODES/STANDARDS-CSA/CMVSS
- (1B1) CODES/STANDARDS USA

FOR ELECTRICAL TORQUE SPECIFICATIONS SEE DWG NO. 128783-01-000

FOR ELECTRICAL CALLOUTS SEE DWG NO. 121339-01-000

(1B1) (265)

DESCRIPTION:  
**WIRING INSTL-BODY, 110V**

SHEET: 7 OF 7 ITEM/PART NO: 000034923 / 31792301000 REV

1 07-Aug-2018