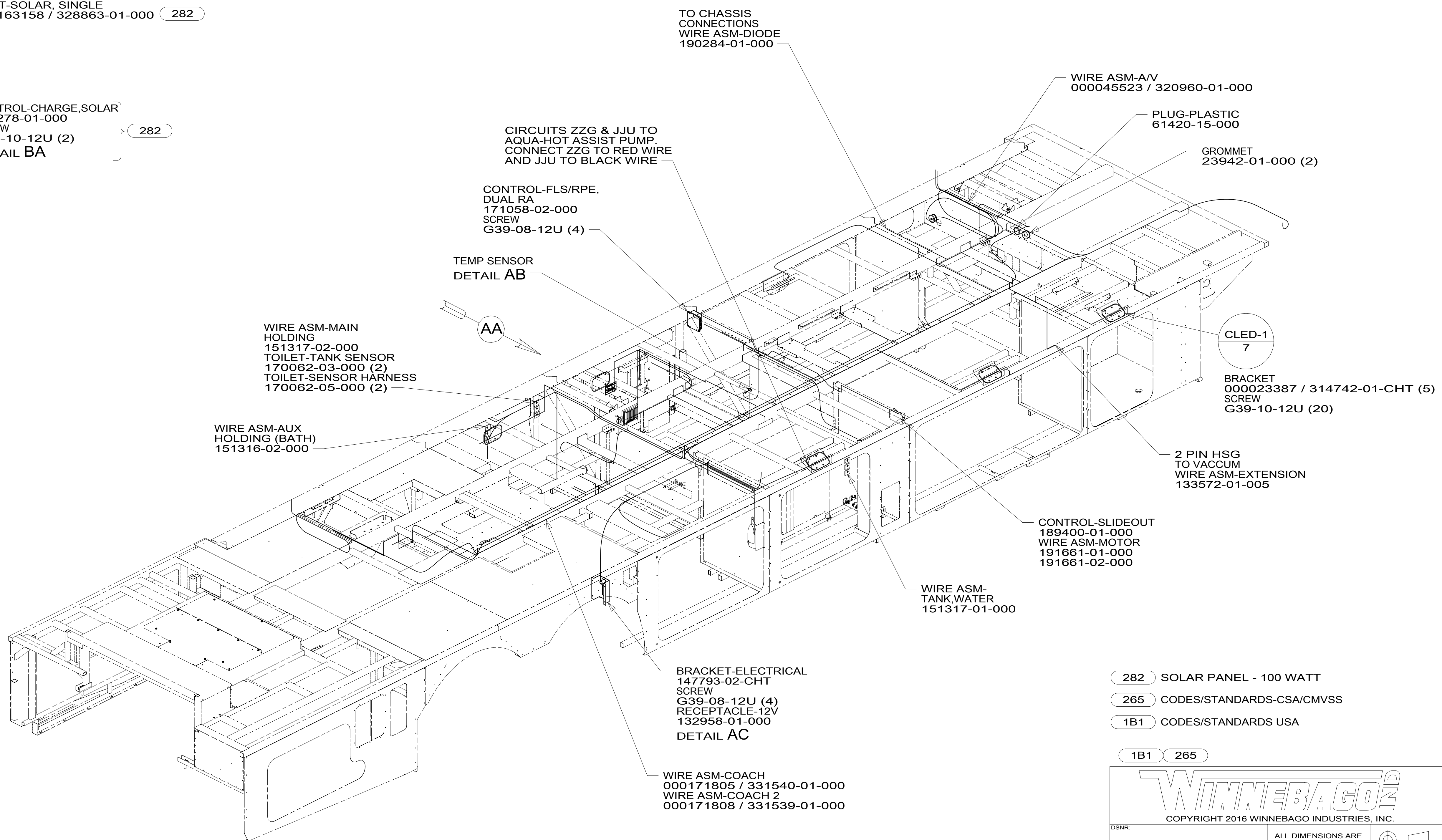
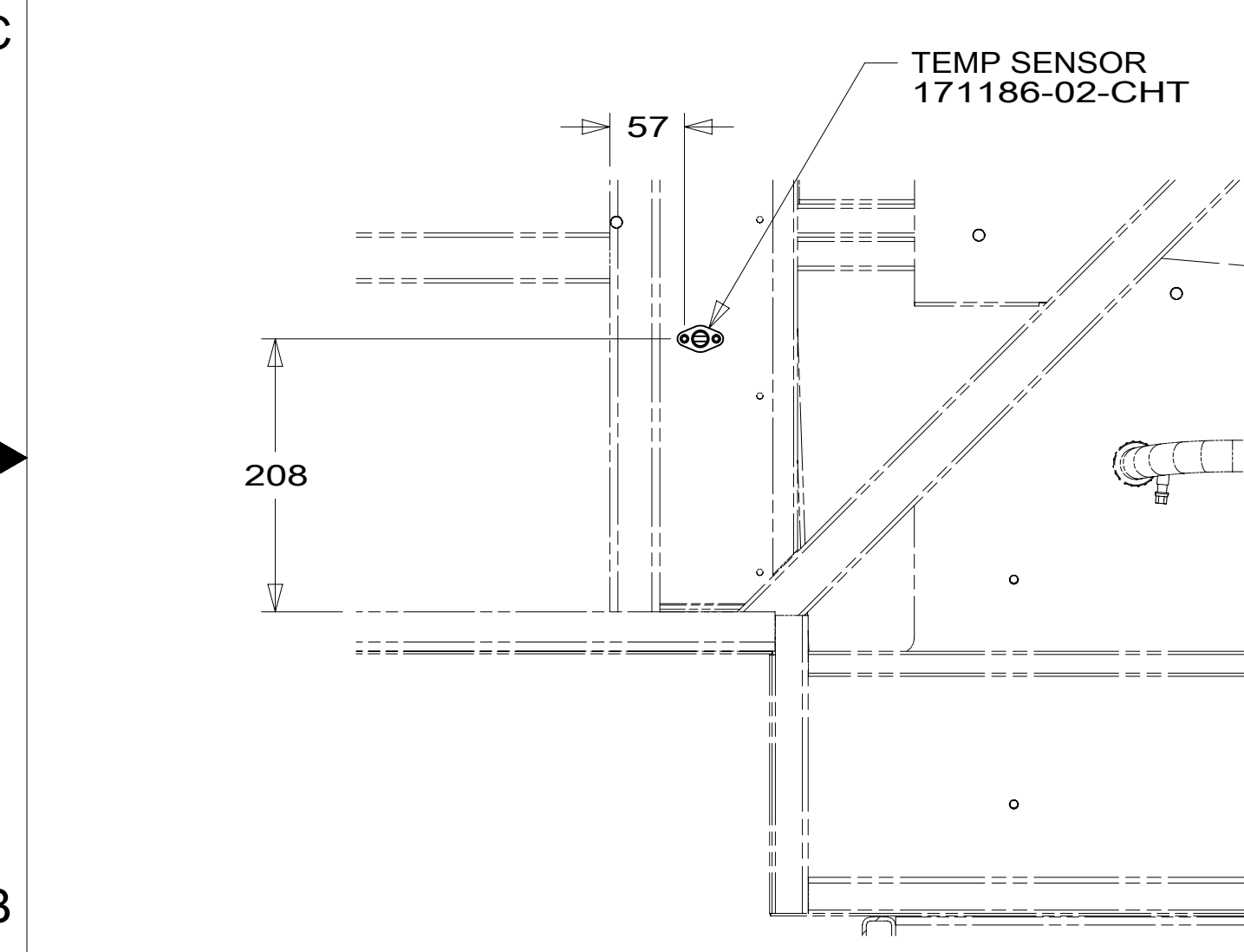
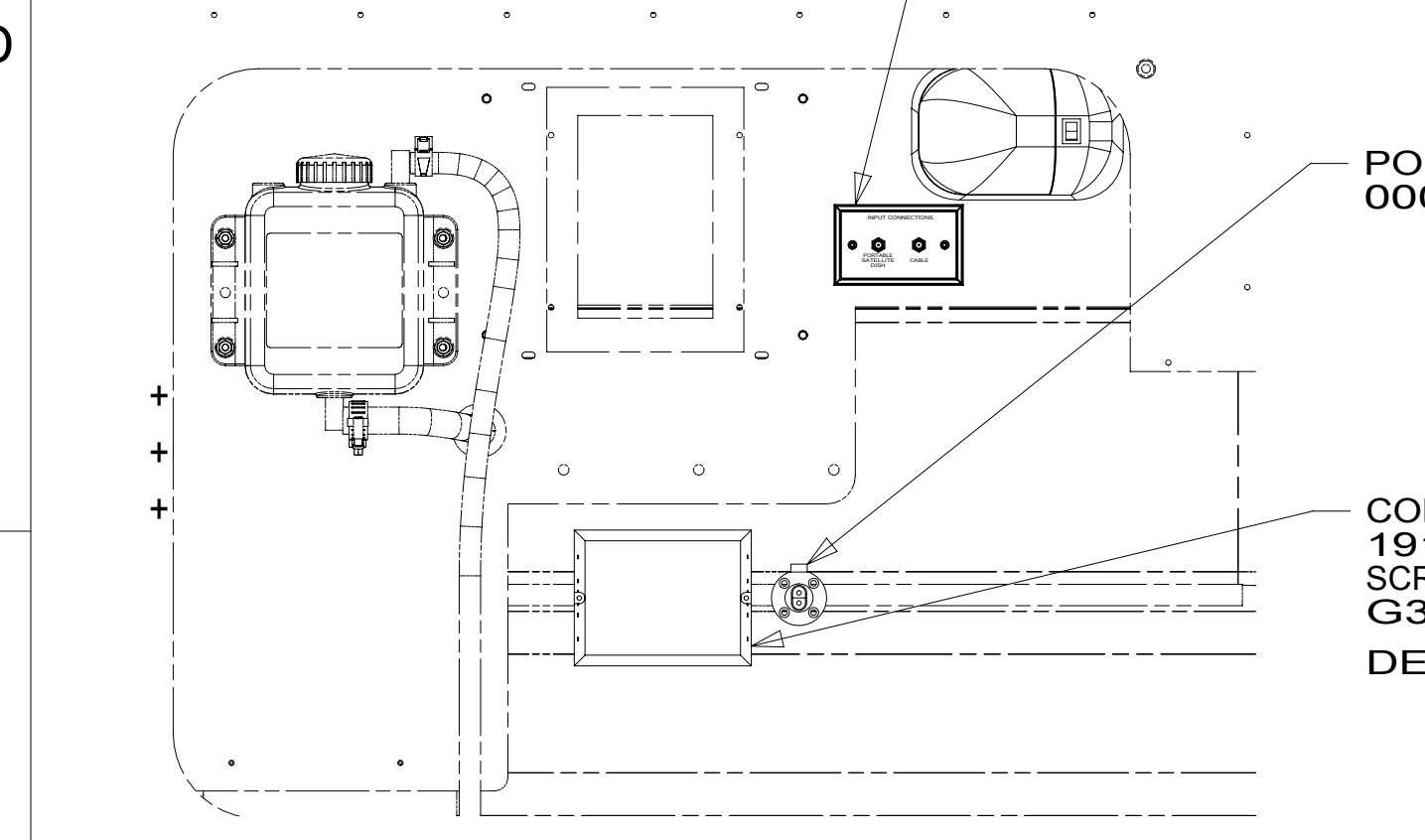
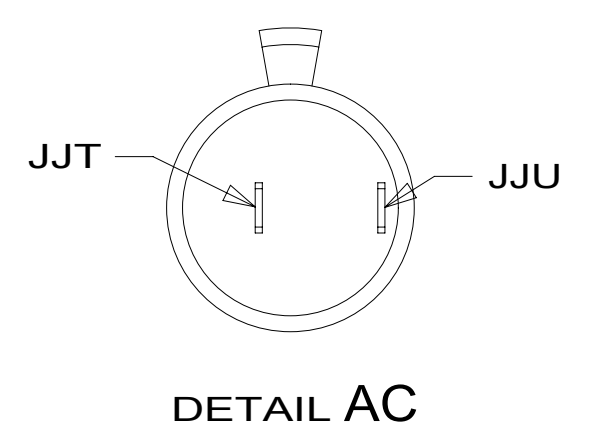


8 7 6 5 4 3 2 1



NOTES:

1. AT MINIMUM ALL WIRES TO BE SUPPORTED AND SECURED PER CODE REQUIREMENTS. USE CLAMP 10495 OR 10497 OR WIRE TIE 8343 OR 108046 AND SCREW G67-XX-XXX OR G56-XX-XXX AS APPROPRIATE FOR INSTALLATION.
2. ROUTE TANK SENSOR WIRES SO THEY DO NOT PASS OVER SENSORS. USE WIRE TIE MOUNT 155366-01-000 AND WIRE TIE 8343-01-000 AS NEEDED. TANK SURFACE MUST BE CLEANED USING ISOPROPYL ALCOHOL AND PRIMED WITH PRIMER 94.

FOR ELECTRICAL TORQUE SPECIFICATIONS SEE DWG NO. 128783-01-000

FOR ELECTRICAL CALLOUTS SEE DWG NO. 121339-01-000

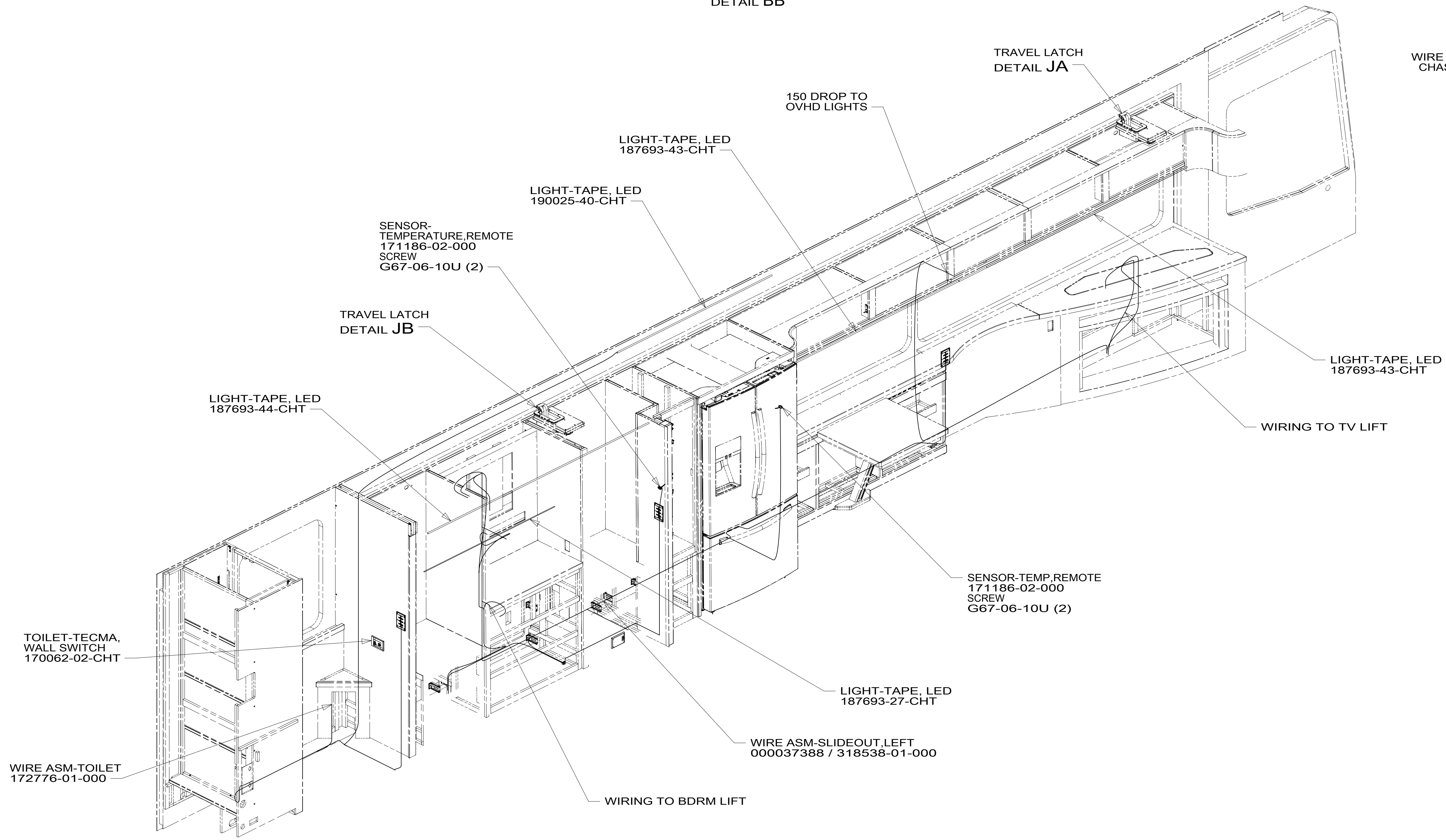
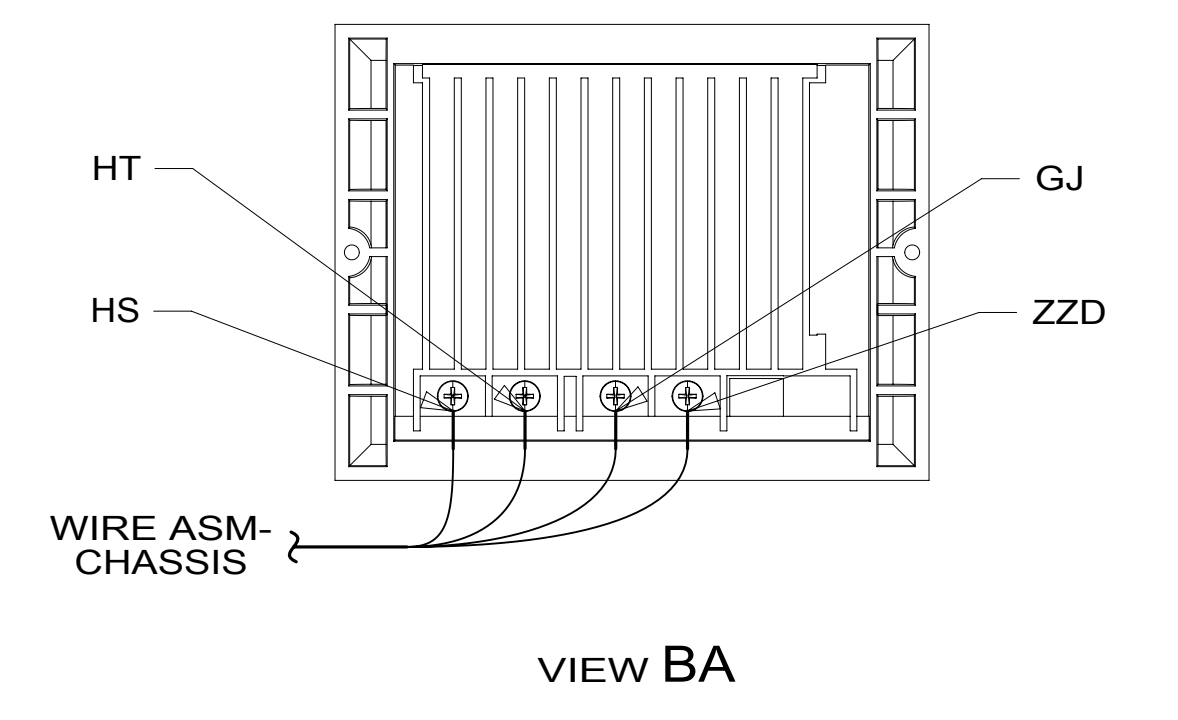
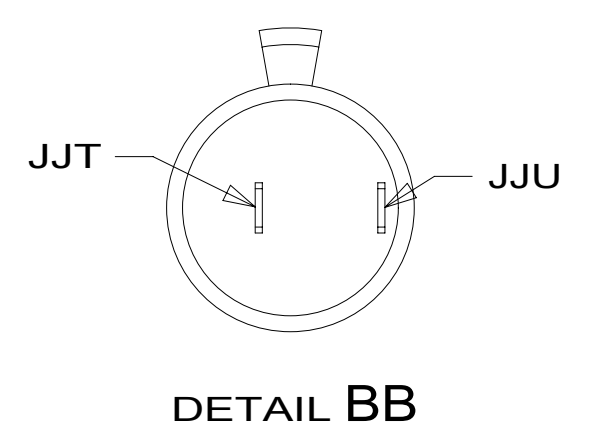
- (282) SOLAR PANEL - 100 WATT
- (265) CODES/STANDARDS-CSA/CMVSS
- (1B1) CODES/STANDARDS USA

WINNEBAGO
COPYRIGHT 2016 WINNEBAGO INDUSTRIES, INC.

DSNR:	ALL DIMENSIONS ARE IN MILLIMETERS	
DFFR:	MATERIAL:	
UNSPECIFIED TOLERANCES:	WEIGHT: (LBS)	FIRST USED:
WHOLE DIM (X) : 3		18 P42Q
ONE-PLACE (X.X) : 1.5		
TWO-PLACE (X.XX) : 0.50		
ANGLE : 1°		
REFER TO ES0018 FOR FASTENER TIGHTENING GUIDELINES		
WIRING INSTL-BODY, 12V		
SHEET: 1 OF 10	ITEM/PART NO: 000034911 / 31791901000	REV:
REF: 1		17-Dec-2018

8 7 6 5 4 3 2 1

8 7 6 5 4 3 2 1



NOTES:

1. AT MINIMUM ALL WIRES TO BE SUPPORTED AND SECURED PER CODE REQUIREMENTS. USE CLAMP 10495 OR 10497 OR WIRE TIE 8343 OR 108046 AND SCREW G67-XX-XXX OR G56-XX-XXX AS APPROPRIATE FOR INSTALLATION.

FOR ELECTRICAL TORQUE SPECIFICATIONS SEE DWG NO. 128783-01-000

FOR ELECTRICAL CALLOUTS SEE DWG NO. 121339-01-000

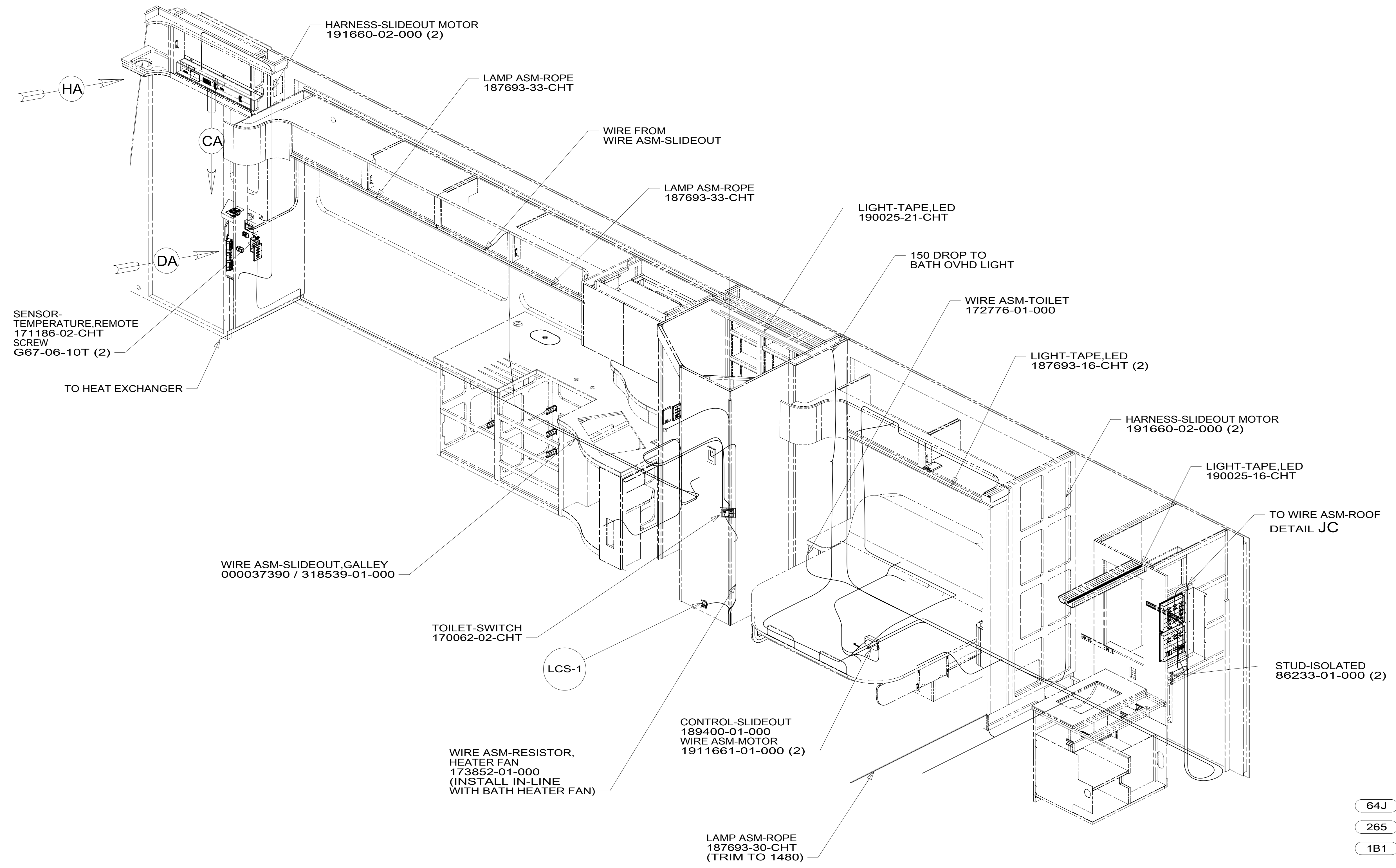
265 CODES/STANDARDS-CSA/CMVSS
1B1 CODES/STANDARDS USA

DESCRIPTION:	1B1 265	
WIRING INSTL-BODY, 12V		
SHEET:	ITEM/PART NO:	REV
2 OF 10	000034911 / 31791901000	

8 7 6 5 4 3 2 1 17-Dec-2018

8 7 6 5 4 3 2 1

D
C
B
A



NOTES:

1. AT MINIMUM ALL WIRES TO BE SUPPORTED AND SECURED PER CODE REQUIREMENTS. USE CLAMP 10495 OR 10497 OR WIRE TIE 8343 OR 108046 AND SCREW G67-XX-XXX OR G56-XX-XXX AS APPROPRIATE FOR INSTALLATION.

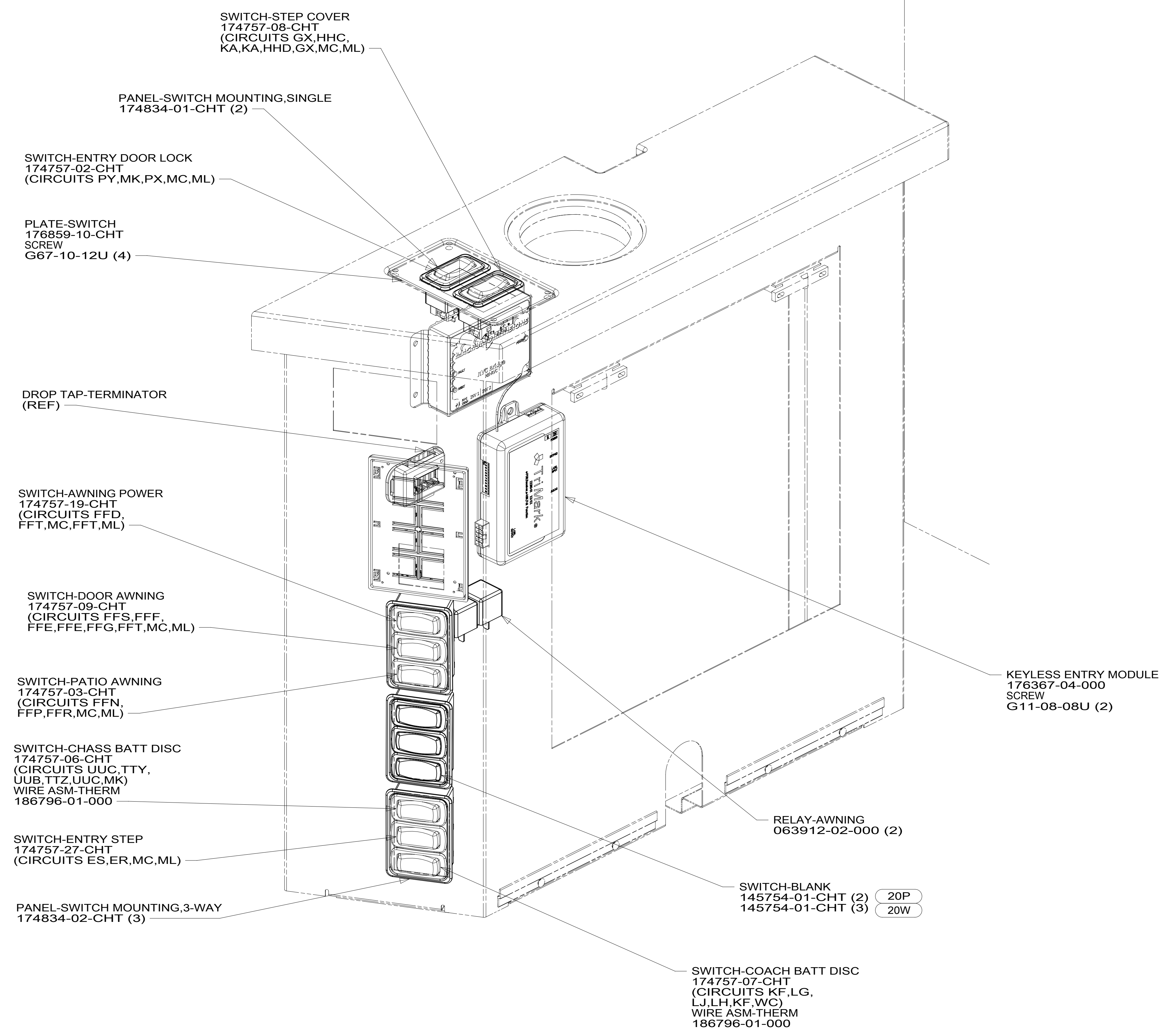
FOR ELECTRICAL TORQUE SPECIFICATIONS SEE DWG NO. 128783-01-000

FOR ELECTRICAL CALLOUTS SEE DWG NO. 121339-01-000

- 64J SEAT PED-6-WAY DR/PASS POWER
- 265 CODES/STANDARDS-CSA/CMVSS
- 1B1 CODES/STANDARDS USA

DESCRIPTION: WIRING INSTL-BODY, 12V		
SHEET: 3 OF 10	ITEM/PART NO: 000034911 / 31791901000	REV

8 7 6 5 4 3 2 1 17-Dec-2018



NOTES:
1. AT MINIMUM ALL WIRES TO BE SUPPORTED AND SECURED PER CODE REQUIREMENTS. USE CLAMP 10495 OR 10497 OR WIRE TIE 8343 OR 108046 AND SCREW G67-XX-XXX OR G56-XX-XXX AS APPROPRIATE FOR INSTALLATION.

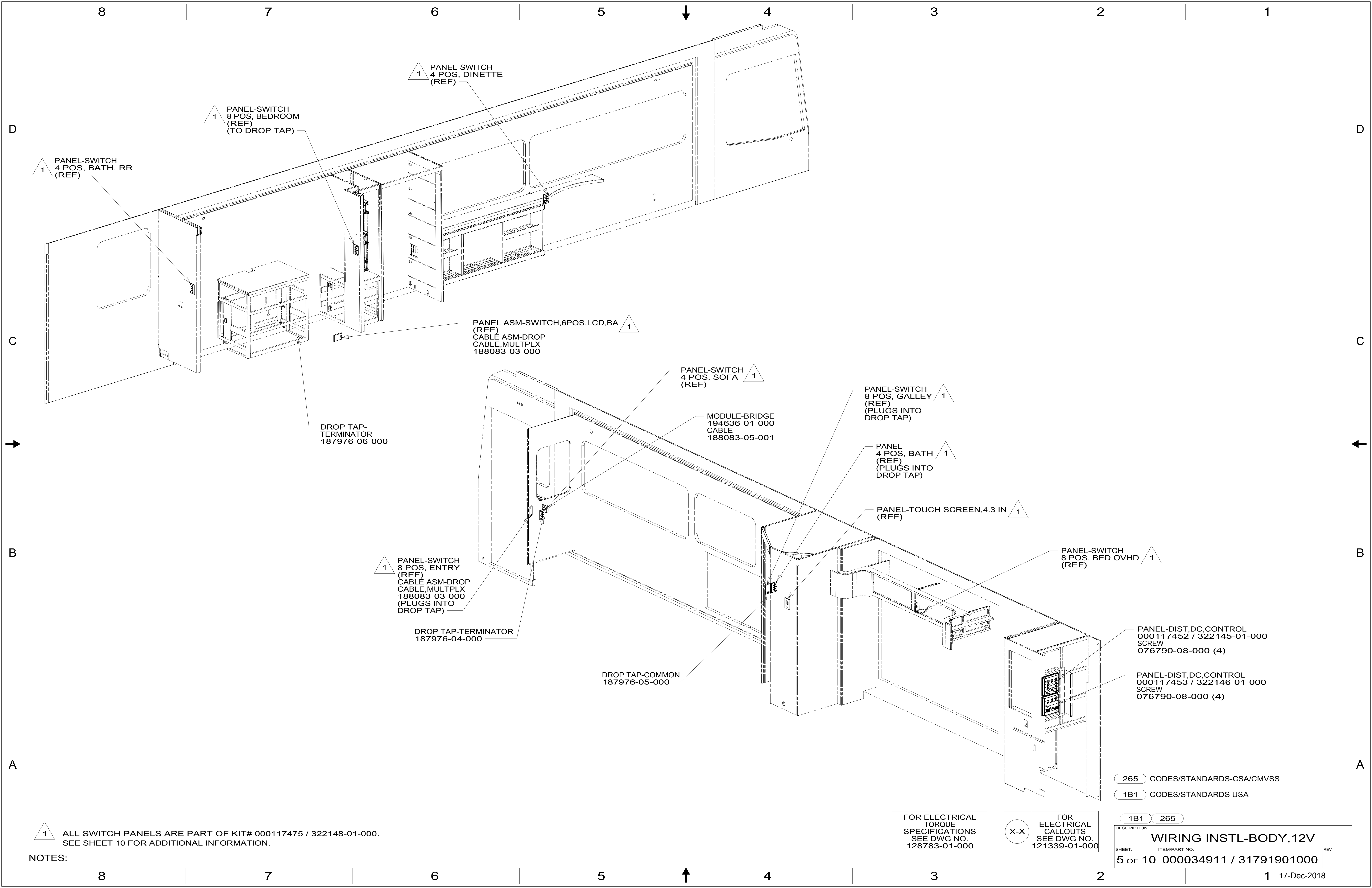
DETAIL DA

FOR ELECTRICAL TORQUE SPECIFICATIONS SEE DWG NO. 128783-01-000

FOR ELECTRICAL CALLOUTS SEE DWG NO. 121339-01-000

- 20P GROUND EFFECT EXT LIGHT PKG
- 20W GROUND EFF EXT LIGHT PKG W/O
- 265 CODES/STANDARDS-CSA/CMVSS
- 1B1 CODES/STANDARDS USA

DESCRIPTION:	1B1 265	
WIRING INSTL-BODY, 12V		
SHEET:	ITEM/PART NO:	REV
4 OF 10	000034911 / 31791901000	



1 PANEL-SWITCH
4 POS, BATH, RR
(REF)

1 PANEL-SWITCH
8 POS, BEDROOM
(REF)
(TO DROP TAP)

1 PANEL-SWITCH
4 POS, DINETTE
(REF)

1 PANEL ASM-SWITCH, 6 POS, LCD, BA
(REF)
CABLE ASM-DROP
CABLE, MULTPLX
188083-03-000

DROP TAP-
TERMINATOR
187976-06-000

1 PANEL-SWITCH
4 POS, SOFA
(REF)

MODULE-BRIDGE
194636-01-000
CABLE
188083-05-001

1 PANEL-SWITCH
8 POS, GALLEY
(REF)
(PLUGS INTO
DROP TAP)

1 PANEL
4 POS, BATH
(REF)
(PLUGS INTO
DROP TAP)

1 PANEL-TOUCH SCREEN, 4.3 IN
(REF)

1 PANEL-SWITCH
8 POS, BED OVHD
(REF)

1 PANEL-SWITCH
8 POS, ENTRY
(REF)
CABLE ASM-DROP
CABLE, MULTPLX
188083-03-000
(PLUGS INTO
DROP TAP)

DROP TAP-TERMINATOR
187976-04-000

DROP TAP-COMMON
187976-05-000

PANEL-DIST, DC, CONTROL
000117452 / 322145-01-000
SCREW
076790-08-000 (4)

PANEL-DIST, DC, CONTROL
000117453 / 322146-01-000
SCREW
076790-08-000 (4)

1 ALL SWITCH PANELS ARE PART OF KIT# 000117475 / 322148-01-000.
SEE SHEET 10 FOR ADDITIONAL INFORMATION.

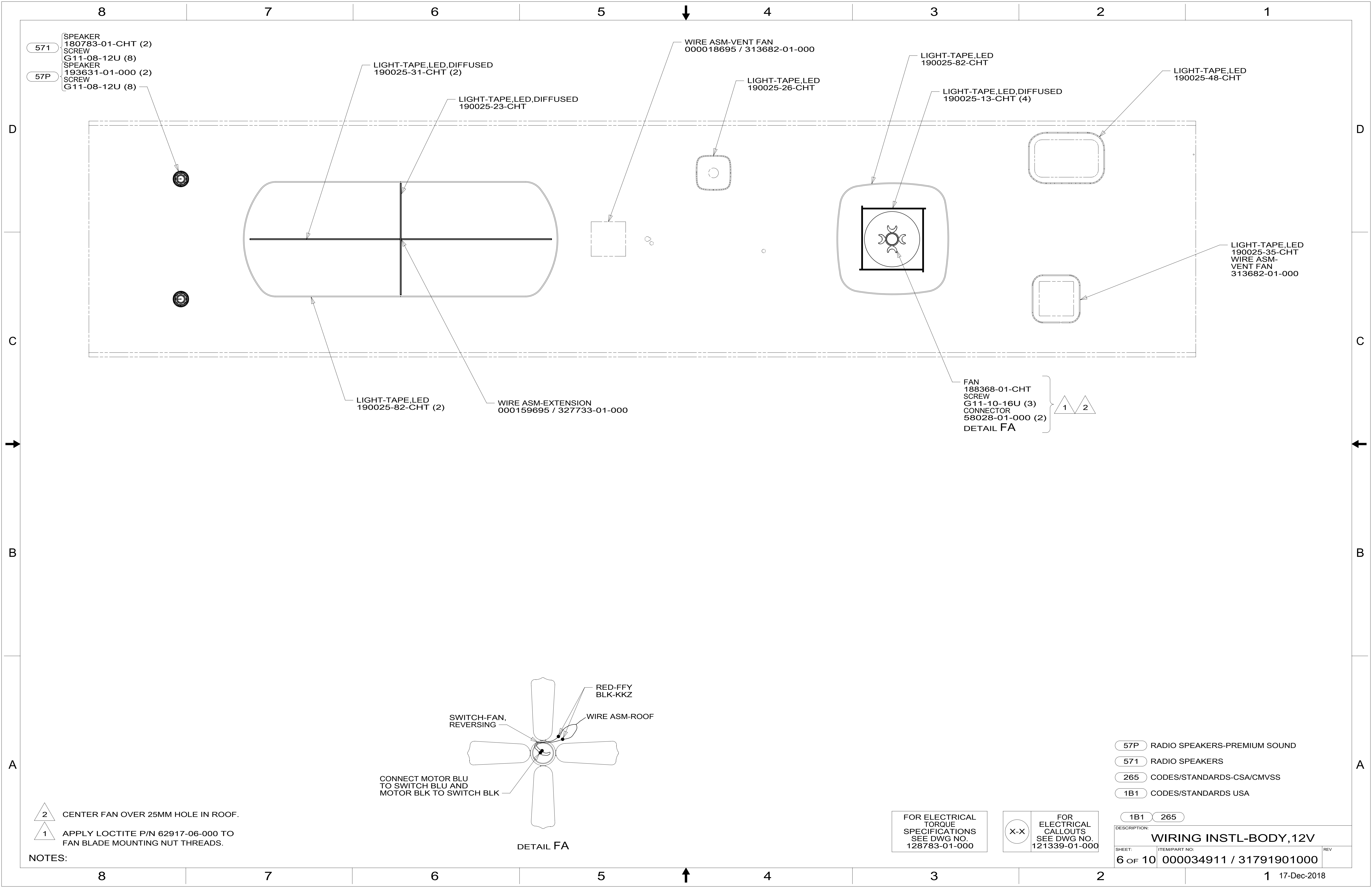
FOR ELECTRICAL
TORQUE
SPECIFICATIONS
SEE DWG NO.
128783-01-000

FOR
ELECTRICAL
CALLOUTS
SEE DWG NO.
121339-01-000

265 CODES/STANDARDS-CSA/CMVSS
1B1 CODES/STANDARDS USA

1B1 265	
DESCRIPTION: WIRING INSTL-BODY, 12V	
SHEET: 5 of 10	ITEM/PART NO: 000034911 / 31791901000
REV 1 17-Dec-2018	

NOTES:



571 SPEAKER 180783-01-CHT (2)
SCREW G11-08-12U (8)
57P SPEAKER 193631-01-000 (2)
SCREW G11-08-12U (8)

LIGHT-TAPE,LED,DIFFUSED 190025-31-CHT (2)

LIGHT-TAPE,LED,DIFFUSED 190025-23-CHT

WIRE ASM-VENT FAN 000018695 / 313682-01-000

LIGHT-TAPE,LED 190025-26-CHT

LIGHT-TAPE,LED 190025-82-CHT

LIGHT-TAPE,LED,DIFFUSED 190025-13-CHT (4)

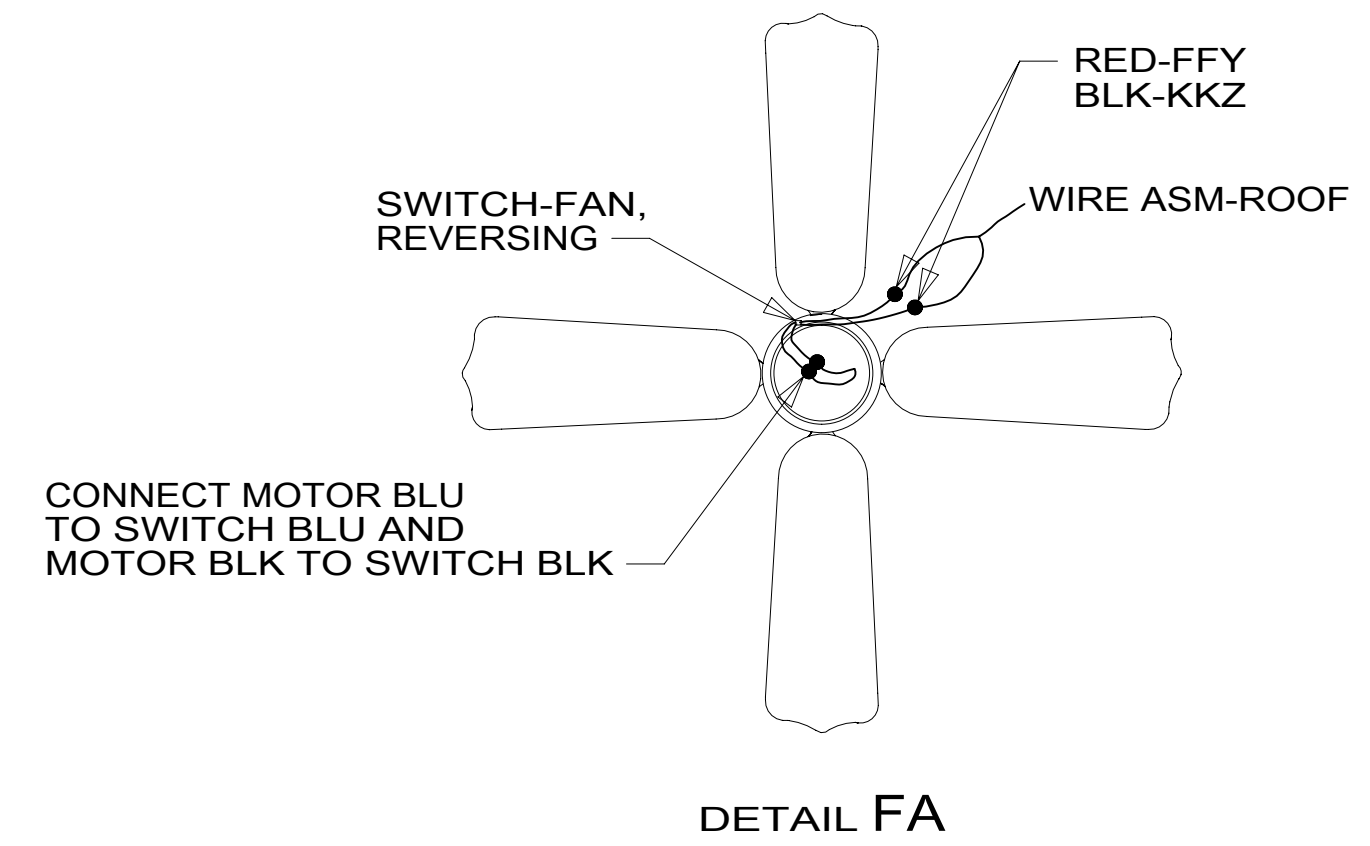
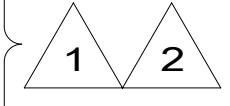
LIGHT-TAPE,LED 190025-48-CHT

LIGHT-TAPE,LED 190025-35-CHT
WIRE ASM-VENT FAN 313682-01-000

LIGHT-TAPE,LED 190025-82-CHT (2)

WIRE ASM-EXTENSION 000159695 / 327733-01-000

FAN 188368-01-CHT
SCREW G11-10-16U (3)
CONNECTOR 58028-01-000 (2)
DETAIL FA



DETAIL FA

2 CENTER FAN OVER 25MM HOLE IN ROOF.
1 APPLY LOCTITE P/N 62917-06-000 TO FAN BLADE MOUNTING NUT THREADS.

NOTES:

FOR ELECTRICAL TORQUE SPECIFICATIONS SEE DWG NO. 128783-01-000

FOR ELECTRICAL CALLOUTS SEE DWG NO. 121339-01-000

- 57P RADIO SPEAKERS-PREMIUM SOUND
- 571 RADIO SPEAKERS
- 265 CODES/STANDARDS-CSA/CMVSS
- 1B1 CODES/STANDARDS USA

DESCRIPTION:	
WIRING INSTL-BODY, 12V	
SHEET:	ITEM/PART NO:
6 OF 10	000034911 / 31791901000
REV	

8

7

6

5

4

3

2

1



DA-4 783 1
DETAIL GA

196
PLATE-ROOF,CABLE ENTRY
146488-01-000
SCREW
G67-10-12U (10)
CABLE
87105-01-009
ADAPTER
194155-01-CHT

1 193
ANTENNA-TV ROOF
000039180 / 318992-01-CHT
EXTENSION-CONNECTOR
179004-06-000
SCREW
000G67-10-12U (6)

282
PANEL-SOLAR 115 WATT
000173911 / 332174-01-CHT
MOUNTING FEET-SOLAR, QTY 4
000037645 / 318636-01-000
SCREW
G39-10-10U (12)

282
PORT-SOLAR, 3 POSITION
000170803 / 331218-01-CHT

1 196
ANTENNA-TV, AUTOMATIC
194155-01-CHT

SEPARATE CABLES AND INSTALL WIRE COVER
OVER HOLE IN ROOF ASM WITH CABLES EXITING
ON PASSENGERS SIDE.

THE SATELLITE DISH AND WIRE CONNECTIONS
ARE TO BE PLACED ON THE CENTERLINE
OF THE MOTORHOME FACING FORWARD.

WHEN APPLYING ROOF SEALANT TO SATELLITE DISH,
PLACE ROOF SEALANT HERE (APPROX. 75MM WIDE)
AND PUSH THE CABLES INTO THE SEALANT
TO STABILIZE THEM.

CONNECT CABLE ASM-COAX FROM ROOF ASM
TO COAX CABLES ON SATELLITE DISH AND
CONNECT 10' CABLE-DATA FROM ROOF ASM
TO DATA CABLE FROM SATELLITE DISH AND
PLACE ALL CONNECTIONS BACK INTO ROOF ASM.

DETAIL GA

FOR ELECTRICAL
TORQUE
SPECIFICATIONS
SEE DWG NO.
128783-01-000

FOR
ELECTRICAL
CALLOUTS
SEE DWG NO.
121339-01-000

- 196 TV ANT-AUTO,DIRECTIONAL AMPL
- 193 TV ANT-DIGITAL AMPLIFIED
- 783 SATELLITE HD TV SYSTEM AUTOC
- 282 SOLAR PANEL - 100 WATT
- 265 CODES/STANDARDS-CSA/CMVSS
- 1B1 CODES/STANDARDS USA

1B1	265
DESCRIPTION: WIRING INSTL-BODY, 12V	
SHEET: 7 OF 10	ITEM/PART NO: 000034911 / 31791901000
REV	

1 SEE MANUFACTURER'S INSTALLATION FOR
ADDITIONAL INFORMATION.

NOTES:

8

7

6

5

4

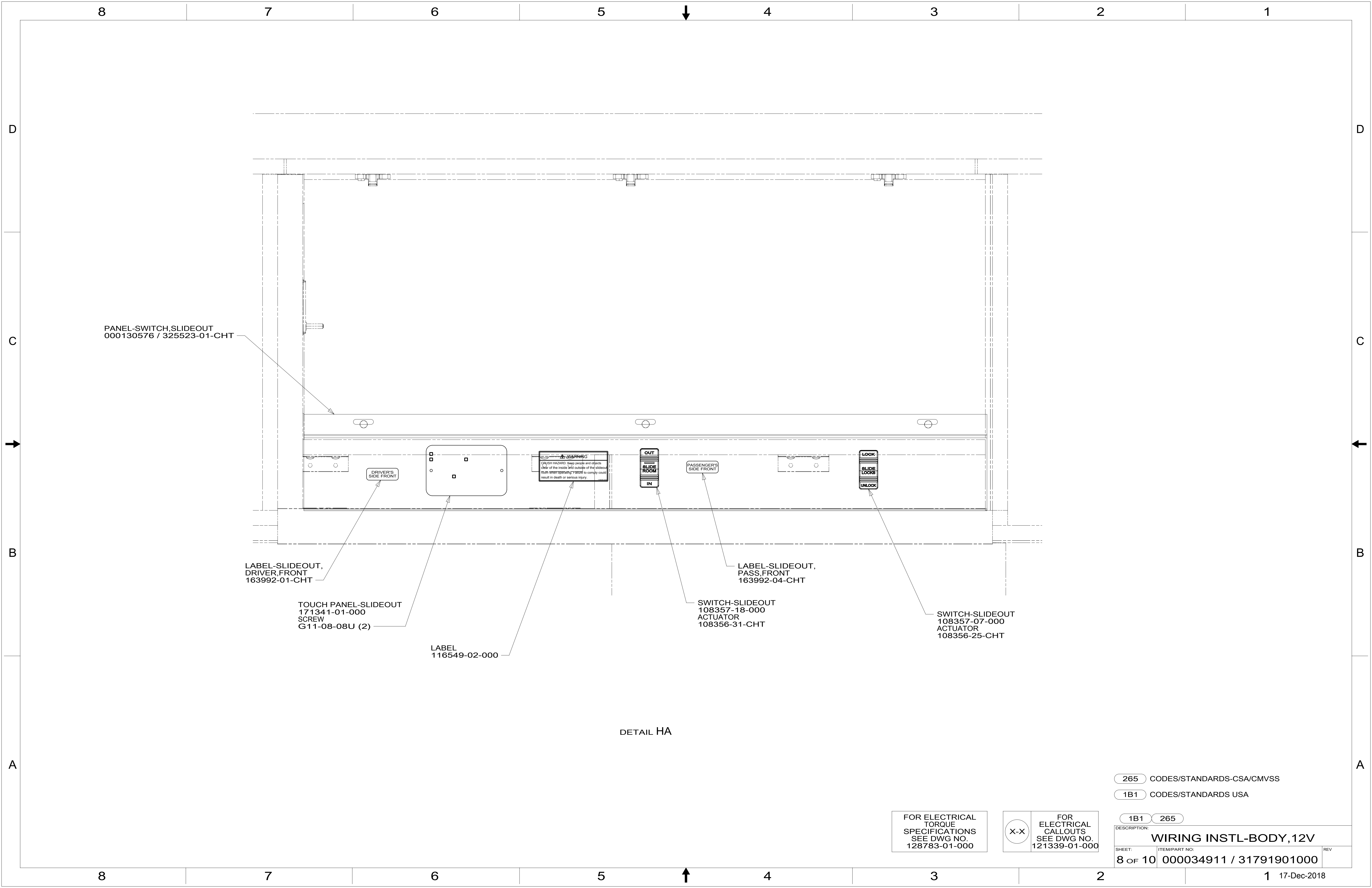
3

2

1

17-Dec-2018





DETAIL HA

265 CODES/STANDARDS-CSA/CMVSS

1B1 CODES/STANDARDS USA

1B1 265

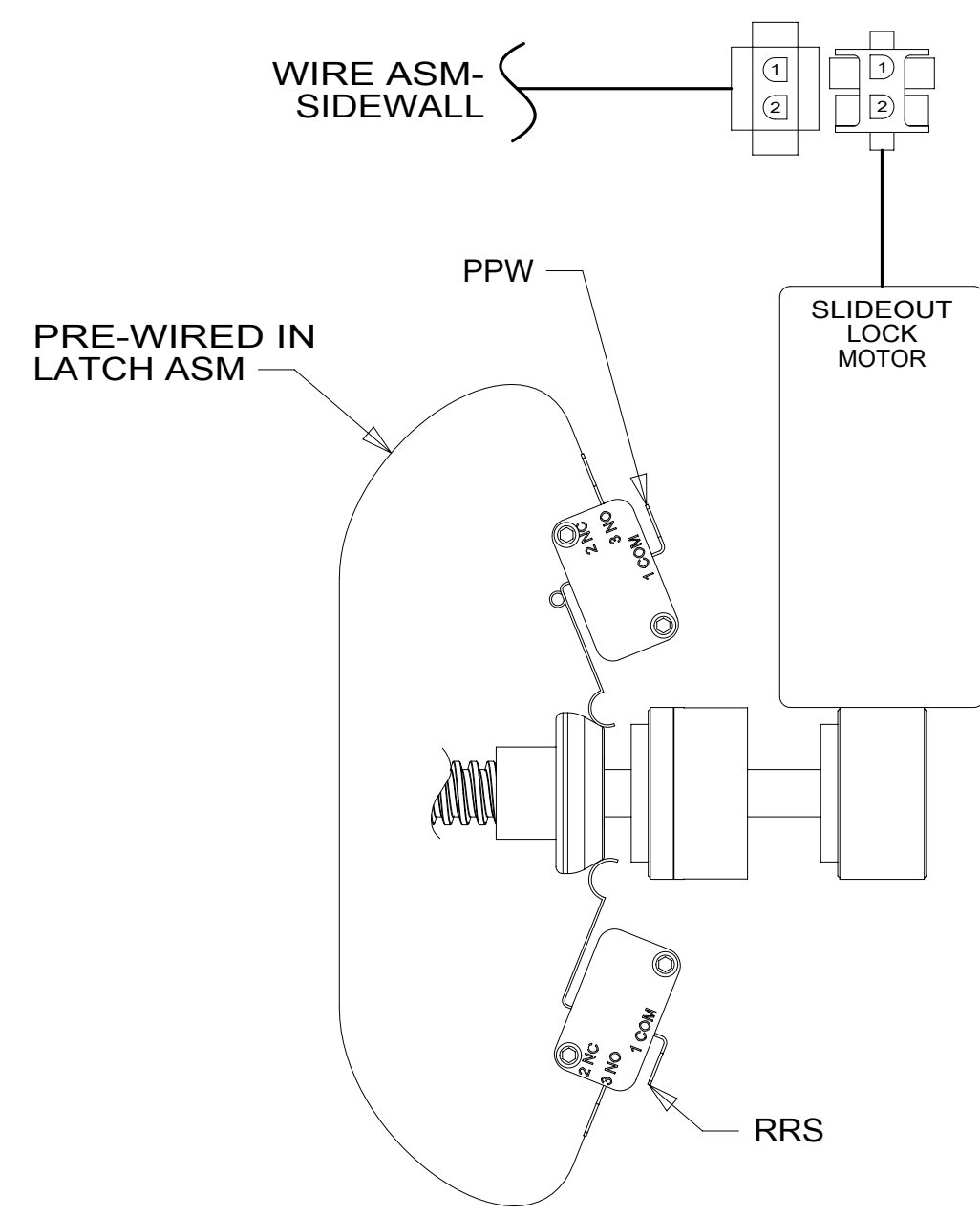
FOR ELECTRICAL TORQUE SPECIFICATIONS SEE DWG NO. 128783-01-000

FOR ELECTRICAL CALLOUTS SEE DWG NO. 121339-01-000

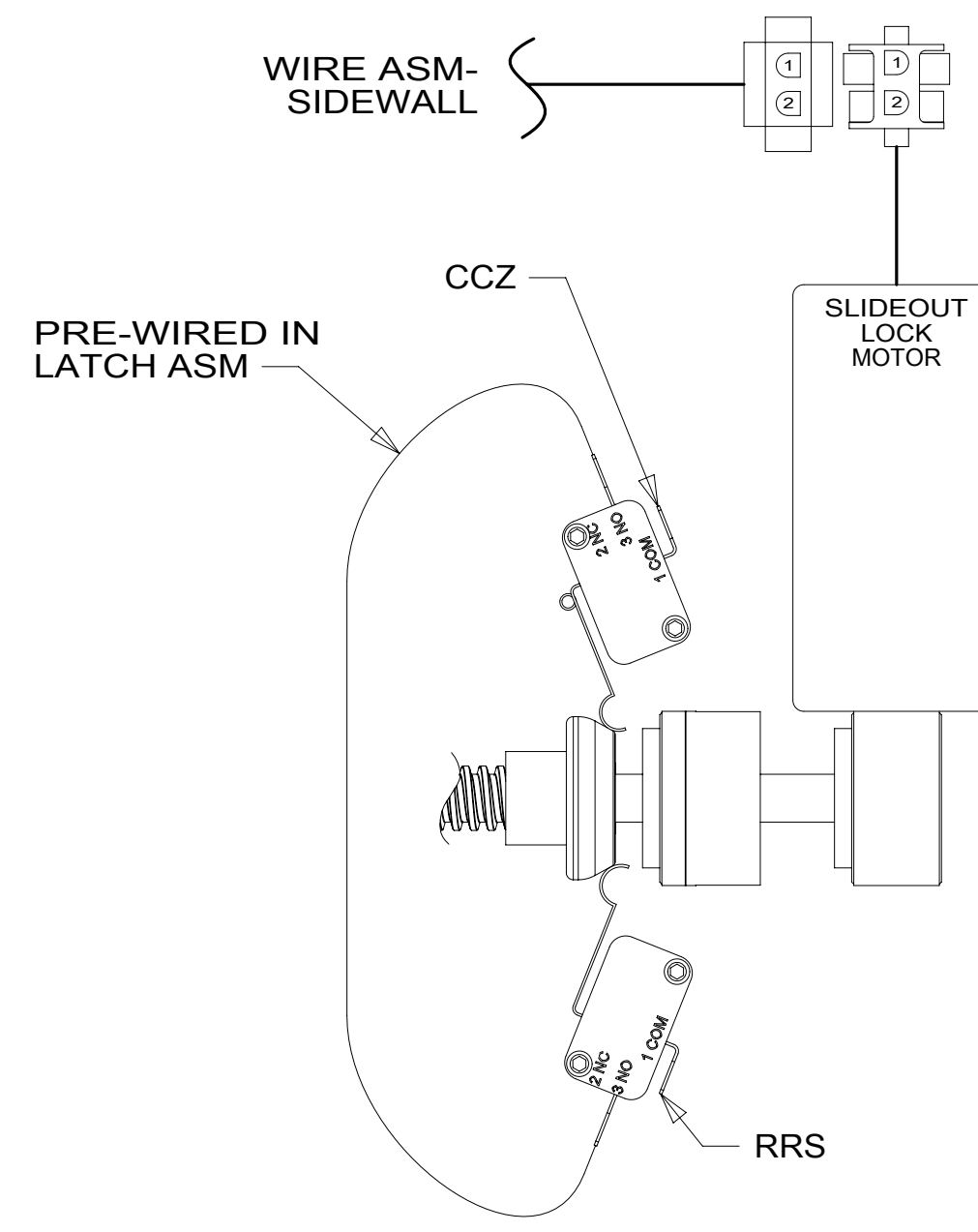
DESCRIPTION: WIRING INSTL-BODY, 12V

SHEET: 8 OF 10 ITEM/PART NO: 000034911 / 31791901000 REV

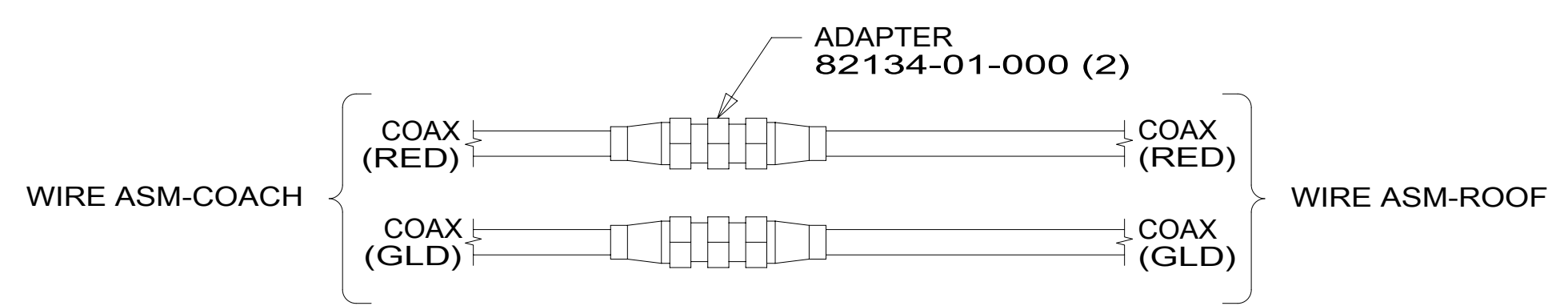
8 7 6 5 4 3 2 1



DETAIL JA



DETAIL JB



DETAIL JC

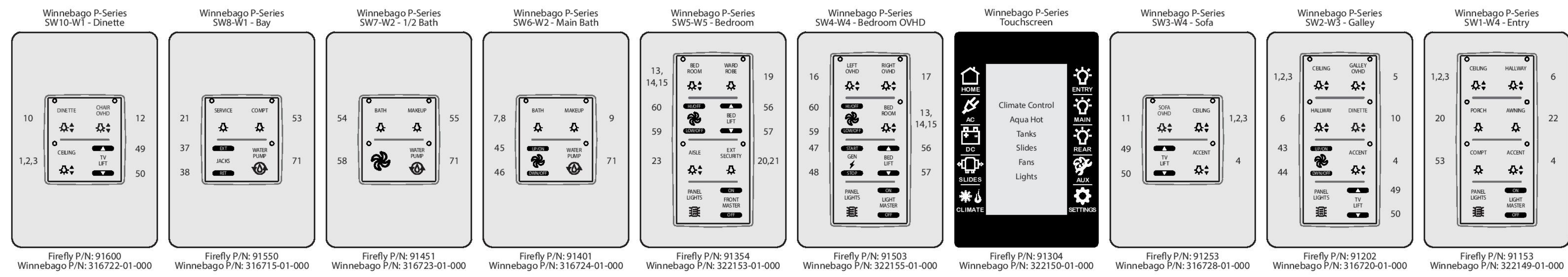
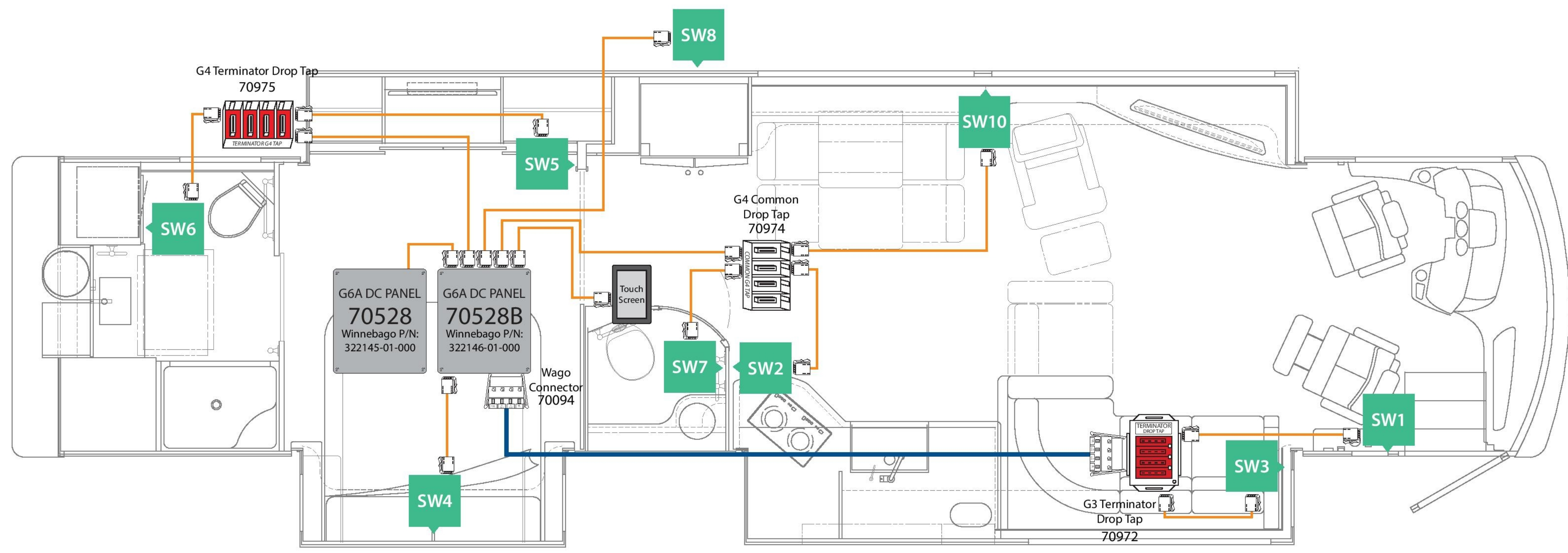
265 CODES/STANDARDS-CSA/CMVSS
 1B1 CODES/STANDARDS USA

FOR ELECTRICAL TORQUE SPECIFICATIONS SEE DWG NO. 128783-01-000

FOR ELECTRICAL CALLOUTS SEE DWG NO. 121339-01-000

DESCRIPTION:		1B1 265	
WIRING INSTL-BODY, 12V			
SHEET:	ITEM/PART NO.:	REV	
9 OF 10	000034911 / 31791901000		

8 7 6 5 4 3 2 1 17-Dec-2018



KIT *: Firefly P/N: 90876AB
 Winnebago P/N: 322148-01-000
 * Kits may not include all components shown on print.

WINNEBAGO - P-Series V4 - P42Q			DI: AD/MD	Network Legend	
Network Wiring Diagram and Switch Panel Layout			PI: AD/AA		
SSP-17 RVC (FW 6v7)	REV 0v2	05/05/17		Trunk Cable Drop Cable Switch Position	

THIS SHEET FOR REFERENCE ONLY

FOR ELECTRICAL TORQUE SPECIFICATIONS SEE DWG NO. 128783-01-000

FOR ELECTRICAL CALLOUTS SEE DWG NO. 121339-01-000

- 265 CODES/STANDARDS-CSA/CMVSS
- 1B1 CODES/STANDARDS USA

DESCRIPTION:	WIRING INSTL-BODY, 12V	
SHEET:	ITEM/PART NO:	REV
10 OF 10	000034911 / 31791901000	