

- 10. PREP THE SURFACE PER MANUFACTURERS INSTRUCTIONS BEFORE APPLYING HEAT PAD.
- 9. SEE WIRING INSTL-BODY FOR ELECTRICAL CONNECTIONS.
- 8. USE SMOOTH PLUMBERS PUTTY 167459-01-000 TO SEAL STRAINER (0.2 PER STRAINER).
- 7. REMOVE SWIVEL NUT ON TRAP-WATERLESS 165406-01 AND CONNECT TO A-10.
- 6. VENT PIPE MUST PROJECT 51 MIN AND 64 MAX ABOVE ROOF FOR PROPER FIT AND FUNCTION.
- 5. SEAL AROUND SHOWER WITH SILICONE.
- 4. SECURE DRAINAGE PIPES TO CABINET USING WIRE TIE 108046-02-000, AND SCREW 000G67-10-12U AT INTERVALS OF NOT MORE THAN 4 FEET APART.
- 3. ALL PIPE AND FITTINGS TO BE ASSEMBLED WITH SOLVENT 004020-01-000 (USA), 004020-02-000 (CAN)
- 2. SLOPE OF TRAP ARM MUST BE 6 PER 305 mm.
- 1. SLOPE OF HORIZONTAL PIPING TO BE MINIMUM OF 3 PER 305 mm.

NOTES:

X-X
FOR
DRAINAGE
CALLOUTS
SEE DWG NO.
000211962 /
303370-01-000

23T DRAINAGE SYSTEM-HEATED



DSNR:		ALL DIMENSIONS ARE IN MILLIMETERS	
DIFTR:			
UNSPECIFIED TOLERANCES:		MATERIAL:	
WHOLE DIM (X)	3		
ONE-PLACE (X.X)	1.5		
TWO-PLACE (X.XX)	0.50		
ANGLE	1°		
REFER TO ES0018 FOR FASTENER TIGHTENING GUIDELINES		WEIGHT: (LBS)	FIRST USED: (REF)
			18 B44E
DRAINAGE SYSTEM INSTL			
SHEET:	ITEM/PART NO:	REV	
1 OF 3	000034622 / 32050901000		
REF:		1 07-Nov-2018	

SHOWER INSTL
 000043965 / 320611-01-XXX
 PANEL-SHELF,BATHROOM
 000176354 / 332666-01-XXX (2) (TOP)
 PANEL-SHELF,BATHROOM
 000176355 / 332667-01-XXX (MIDDLE)
 PANEL-FLOOR,BATHROOM
 000176356 / 332668-01-XXX (FLOOR)

SPACER-VENT
 166672-06-CHT

DOOR-STORAGE
 179220-01-CHT
 FOAM-SEAL,DOOR
 179377-01-CHT
 COMPARTMENT-STORAGE
 179218-01-CHT
 SCREW
 000G67-10-10U (10)

HOLDER-DRYROLL TISSUE
 190211-01-CHT

DETAIL BB

VIEW BA

TOILET-CASSETTE
 000034566 / 320321-01-CHT

DETAIL BC

HOSE-FLEXIBLE
 177021-01-000
 (2750mm)

TRAP-WATERLESS
 165406-01-000

STRAINER
 066440-01-000

ADAPTER-ANGLE
 165406-02-000

CLAMP
 000156236 / 326663-01-000

GASKET-DRAINAGE
 167219-02-CHT (2)

DETAIL BC

CABLE TIE
 108046-02-000
 SCREW
 000G67-10-12U

WASHER-RUBBER
 000156082 / 326591-01-CHT

SINK-GALLEY
 165378-01-CHT
 STRAINER
 163569-01-000
 SEAL
 091255-03-000 (940MM)

ADAPTER-ANGLE
 165406-02-000

TRAP-WATERLESS
 165406-01-000

GROMMET
 071015-26-000

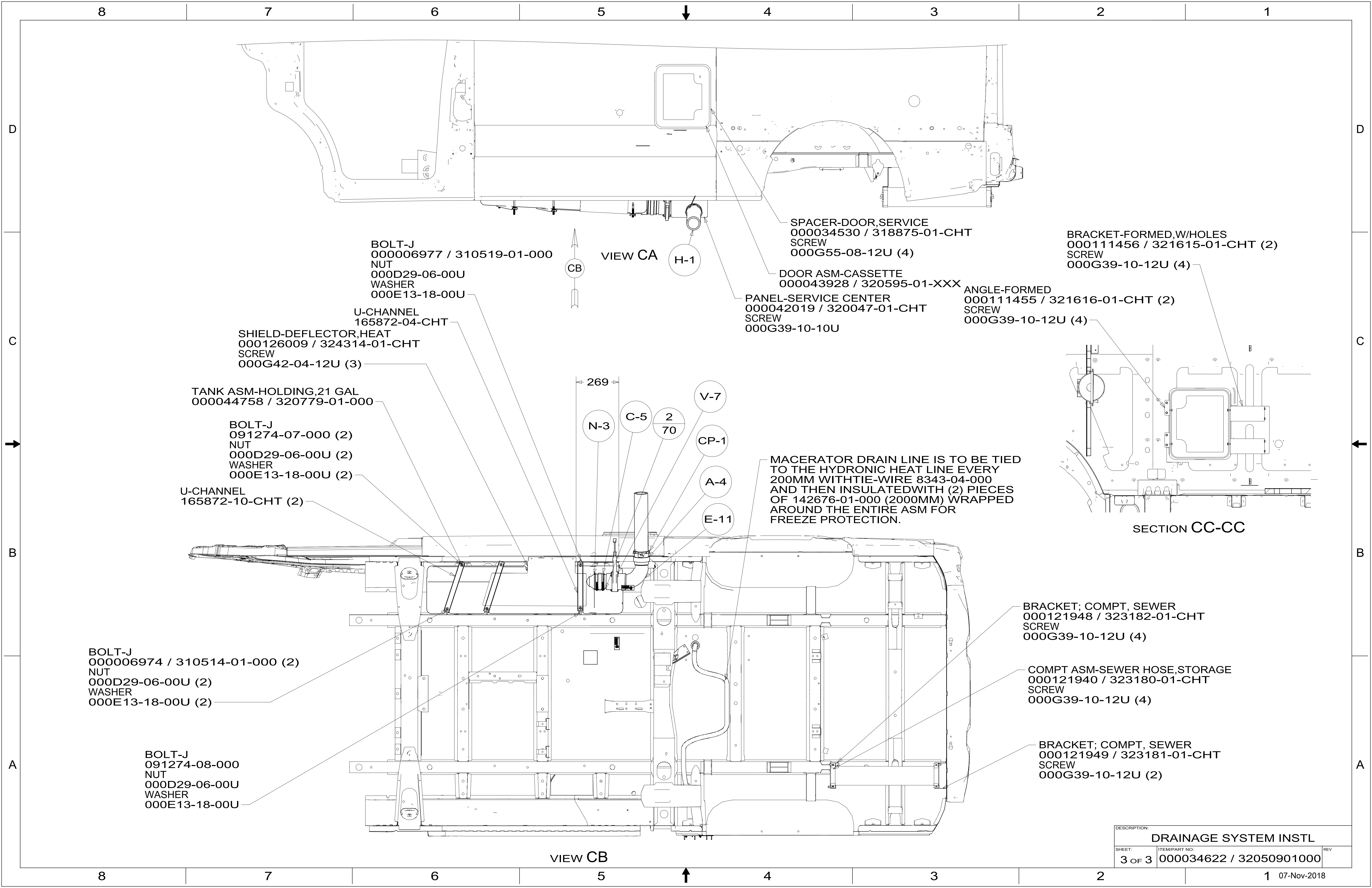
DETAIL BB

CLAMP
 000156236 / 326663-01-000

PUMP-MACERATOR,MODIFIED
 165762-02-000

BRACKET-PUMP,MACERATOR
 000042154 / 320797-01-CHT
 SCREW
 000G39-06-16U (4)
 SCREW
 000G19-10-20U (4)
 WASHER
 000E14-10-00U (4)
 NUT
 000D28-10-00U (4)

DESCRIPTION:		
DRAINAGE SYSTEM INSTL		
SHEET:	ITEM/PART NO:	REV
2 OF 3	000034622 / 32050901000	



BOLT-J
00006977 / 310519-01-000
NUT
000D29-06-00U
WASHER
000E13-18-00U

VIEW CA

H-1

SPACER-DOOR, SERVICE
000034530 / 318875-01-CHT
SCREW
000G55-08-12U (4)

BRACKET-FORMED, W/HOLES
000111456 / 321615-01-CHT (2)
SCREW
000G39-10-12U (4)

DOOR ASM-CASSETTE
000043928 / 320595-01-XXX

PANEL-SERVICE CENTER
000042019 / 320047-01-CHT
SCREW
000G39-10-10U

ANGLE-FORMED
000111455 / 321616-01-CHT (2)
SCREW
000G39-10-12U (4)

U-CHANNEL
165872-04-CHT
SHIELD-DEFLECTOR, HEAT
000126009 / 324314-01-CHT
SCREW
000G42-04-12U (3)

TANK ASM-HOLDING, 21 GAL
000044758 / 320779-01-000

BOLT-J
091274-07-000 (2)
NUT
000D29-06-00U (2)
WASHER
000E13-18-00U (2)

U-CHANNEL
165872-10-CHT (2)

269

N-3

C-5

2
70

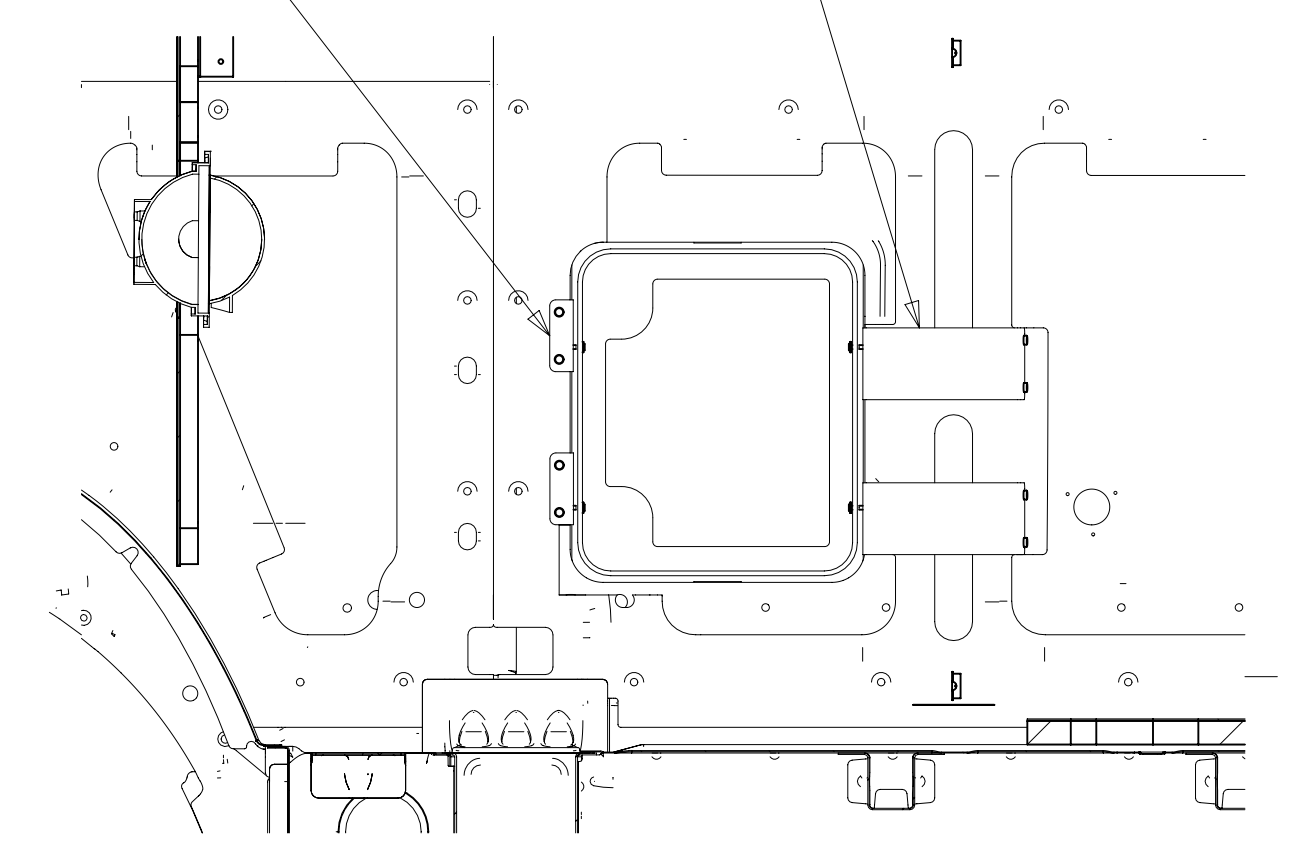
V-7

CP-1

A-4

E-11

MACERATOR DRAIN LINE IS TO BE TIED TO THE HYDRONIC HEAT LINE EVERY 200MM WITH TIE-WIRE 8343-04-000 AND THEN INSULATED WITH (2) PIECES OF 142676-01-000 (2000MM) WRAPPED AROUND THE ENTIRE ASM FOR FREEZE PROTECTION.



SECTION CC-CC

BOLT-J
00006974 / 310514-01-000 (2)
NUT
000D29-06-00U (2)
WASHER
000E13-18-00U (2)

BRACKET; COMPT, SEWER
000121948 / 323182-01-CHT
SCREW
000G39-10-12U (4)

COMPT ASM-SEWER HOSE, STORAGE
000121940 / 323180-01-CHT
SCREW
000G39-10-12U (4)

BOLT-J
091274-08-000
NUT
000D29-06-00U
WASHER
000E13-18-00U

BRACKET; COMPT, SEWER
000121949 / 323181-01-CHT
SCREW
000G39-10-12U (2)

VIEW CB

DESCRIPTION: DRAINAGE SYSTEM INSTL		
SHEET: 3 OF 3	ITEM/PART NO: 000034622 / 32050901000	REV