

8

7

6

5



4

3

2

1

D

D

C

C

B

B

A

A

CABLE ASM-STARTER (RED)	141415-32-043
CABLE ASM-COACH BATTERY (YEL)	141415-52-014
CABLE ASM-COACH BATTERY GND (BLK)	133566-12-008
CABLE ASM-GENERATOR (GRN)	141415-42-038
CABLE ASM-GENERATOR GND (BLK)	133566-12-008
CABLE ASM-STARTER,EXT (RED 2)	141415-32-005
CABLE ASM-INVERTER FUSE (ORG)	141415-61-008
CABLE ASM-INVERTER (ORG)	141415-62-026
CABLE ASM-INVERTER GND (BLK)	133566-12-030
CABLE ASM-INVERTER CASE GND (GRN)	136145-05-012

401

401

401

401

401 INVERTER-DC/AC, 1000 WATT

265 CODES/STANDARDS-CSA/CMVSS

1B1 CODES/STANDARDS USA

1B1 265



COPYRIGHT 2016 WINNEBAGO INDUSTRIES, INC.

DSNR:		ALL DIMENSIONS ARE IN MILLIMETERS	
DFFR:		MATERIAL:	
UNSPECIFIED TOLERANCES:			
WHOLE DIM (X)	: 3		
ONE-PLACE (X.X)	: 1.5		
TWO-PLACE (X.XX)	: 0.50		
ANGLE	: 1°		
REFER TO ES0018 FOR FASTENER TIGHTENING GUIDELINES		WEIGHT: (LBS)	FIRST USED:
			18 322M

FOR ELECTRICAL TORQUE SPECIFICATIONS SEE DWG NO. 128783-01-000

FOR ELECTRICAL CALLOUTS SEE DWG NO. 121339-01-000

DESCRIPTION:		
BATTERY INSTL		
SHEET:	ITEM/PART NO:	REV
1 OF 2	000033257 / 31746101000	

REF: 1 27-Jun-2017

8

7

6

5

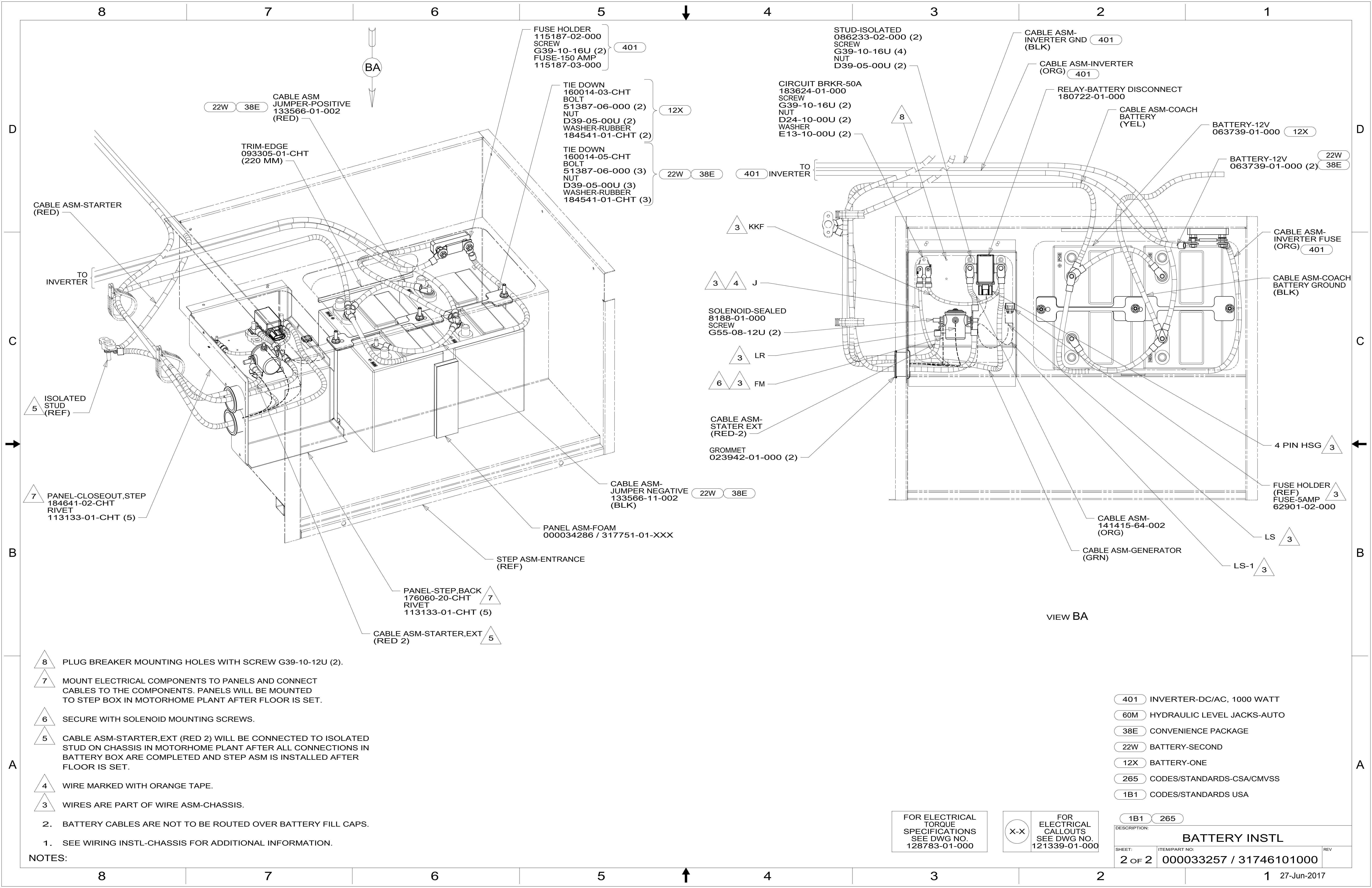


4

3

2

1



FUSE HOLDER
115187-02-000
SCREW
G39-10-16U (2)
FUSE-150 AMP
115187-03-000

STUD-ISOLATED
086233-02-000 (2)
SCREW
G39-10-16U (4)
NUT
D39-05-00U (2)

CABLE ASM-
INVERTER GND
(BLK) 401

CABLE ASM-INVERTER
(ORG) 401

RELAY-BATTERY DISCONNECT
180722-01-000

CABLE ASM-COACH
BATTERY
(YEL)

BATTERY-12V
063739-01-000 12X

BATTERY-12V
063739-01-000 (2) 22W 38E

CIRCUIT BRKR-50A
183624-01-000
SCREW
G39-10-16U (2)
NUT
D24-10-00U (2)
WASHER
E13-10-00U (2)

TO
INVERTER

CABLE ASM-INVERTER FUSE
(ORG) 401

CABLE ASM-COACH
BATTERY GROUND
(BLK)

4 PIN HSG 3

FUSE HOLDER
(REF)
FUSE-5AMP
62901-02-000

LS 3

LS-1 3

3 KKF

3 4 J

SOLENOID-SEALED
8188-01-000
SCREW
G55-08-12U (2)

3 LR

6 3 FM

CABLE ASM-
STATER EXT
(RED-2)

GROMMET
023942-01-000 (2)

CABLE ASM-
JUMPER NEGATIVE
133566-11-002 (22W 38E) (BLK)

TIE DOWN
160014-03-CHT
BOLT
51387-06-000 (2)
NUT
D39-05-00U (2)
WASHER-RUBBER
184541-01-CHT (2)

TIE DOWN
160014-05-CHT
BOLT
51387-06-000 (3)
NUT
D39-05-00U (3)
WASHER-RUBBER
184541-01-CHT (3)

CABLE ASM-
JUMPER NEGATIVE
133566-11-002 (22W 38E) (BLK)

PANEL ASM-FOAM
000034286 / 317751-01-XXX

STEP ASM-ENTRANCE
(REF)

PANEL-STEP, BACK
176060-20-CHT
RIVET
113133-01-CHT (5)

CABLE ASM-STARTER, EXT
(RED 2) 5

CABLE ASM
JUMPER-POSITIVE
133566-01-002
(RED) 22W 38E

TRIM-EDGE
093305-01-CHT
(220 MM)

CABLE ASM-STARTER
(RED)

TO
INVERTER

ISOLATED
STUD
(REF) 5

PANEL-CLOSEOUT, STEP
184641-02-CHT
RIVET
113133-01-CHT (5) 7

VIEW BA

- NOTES:
- 8 PLUG BREAKER MOUNTING HOLES WITH SCREW G39-10-12U (2).
 - 7 MOUNT ELECTRICAL COMPONENTS TO PANELS AND CONNECT CABLES TO THE COMPONENTS. PANELS WILL BE MOUNTED TO STEP BOX IN MOTORHOME PLANT AFTER FLOOR IS SET.
 - 6 SECURE WITH SOLENOID MOUNTING SCREWS.
 - 5 CABLE ASM-STARTER, EXT (RED 2) WILL BE CONNECTED TO ISOLATED STUD ON CHASSIS IN MOTORHOME PLANT AFTER ALL CONNECTIONS IN BATTERY BOX ARE COMPLETED AND STEP ASM IS INSTALLED AFTER FLOOR IS SET.
 - 4 WIRE MARKED WITH ORANGE TAPE.
 - 3 WIRES ARE PART OF WIRE ASM-CHASSIS.
2. BATTERY CABLES ARE NOT TO BE ROUTED OVER BATTERY FILL CAPS.
1. SEE WIRING INSTL-CHASSIS FOR ADDITIONAL INFORMATION.

- 401 INVERTER-DC/AC, 1000 WATT
- 60M HYDRAULIC LEVEL JACKS-AUTO
- 38E CONVENIENCE PACKAGE
- 22W BATTERY-SECOND
- 12X BATTERY-ONE
- 265 CODES/STANDARDS-CSA/CMVSS
- 1B1 CODES/STANDARDS USA

FOR ELECTRICAL
TORQUE
SPECIFICATIONS
SEE DWG NO.
128783-01-000

FOR
ELECTRICAL
CALLOUTS
SEE DWG NO.
121339-01-000

DESCRIPTION:		1B1 265
BATTERY INSTL		
SHEET:	ITEM/PART NO:	REV
2 OF 2	000033257 / 31746101000	