

- 64A JACKS-STABILIZING, ELECTRIC
- 23R DRAINAGE SYSTEM/HEAT-PREWIRE
- 23T DRAINAGE SYSTEM-HEATED
- 265 CODES/STANDARDS-CSA/CMVSS
- 1B1 CODES/STANDARDS USA

1B1 265

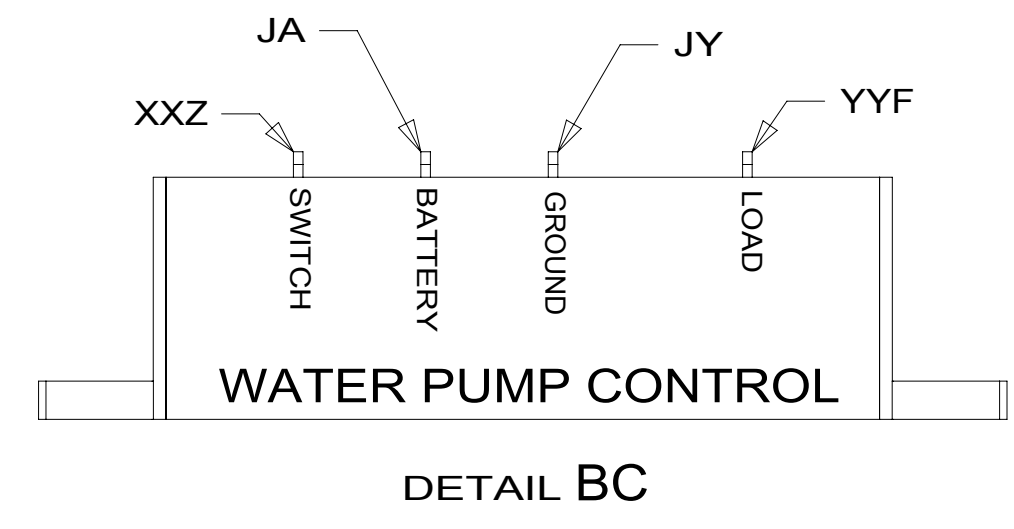
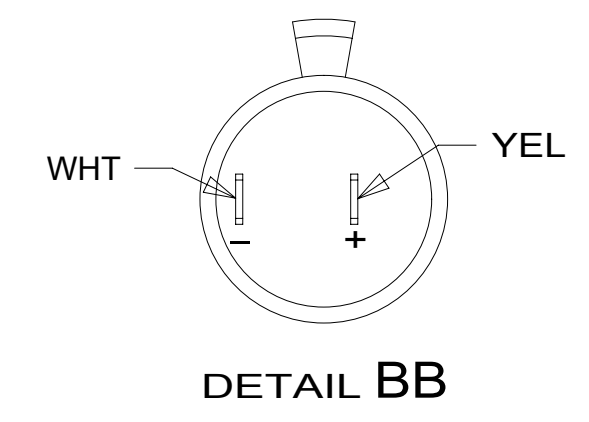
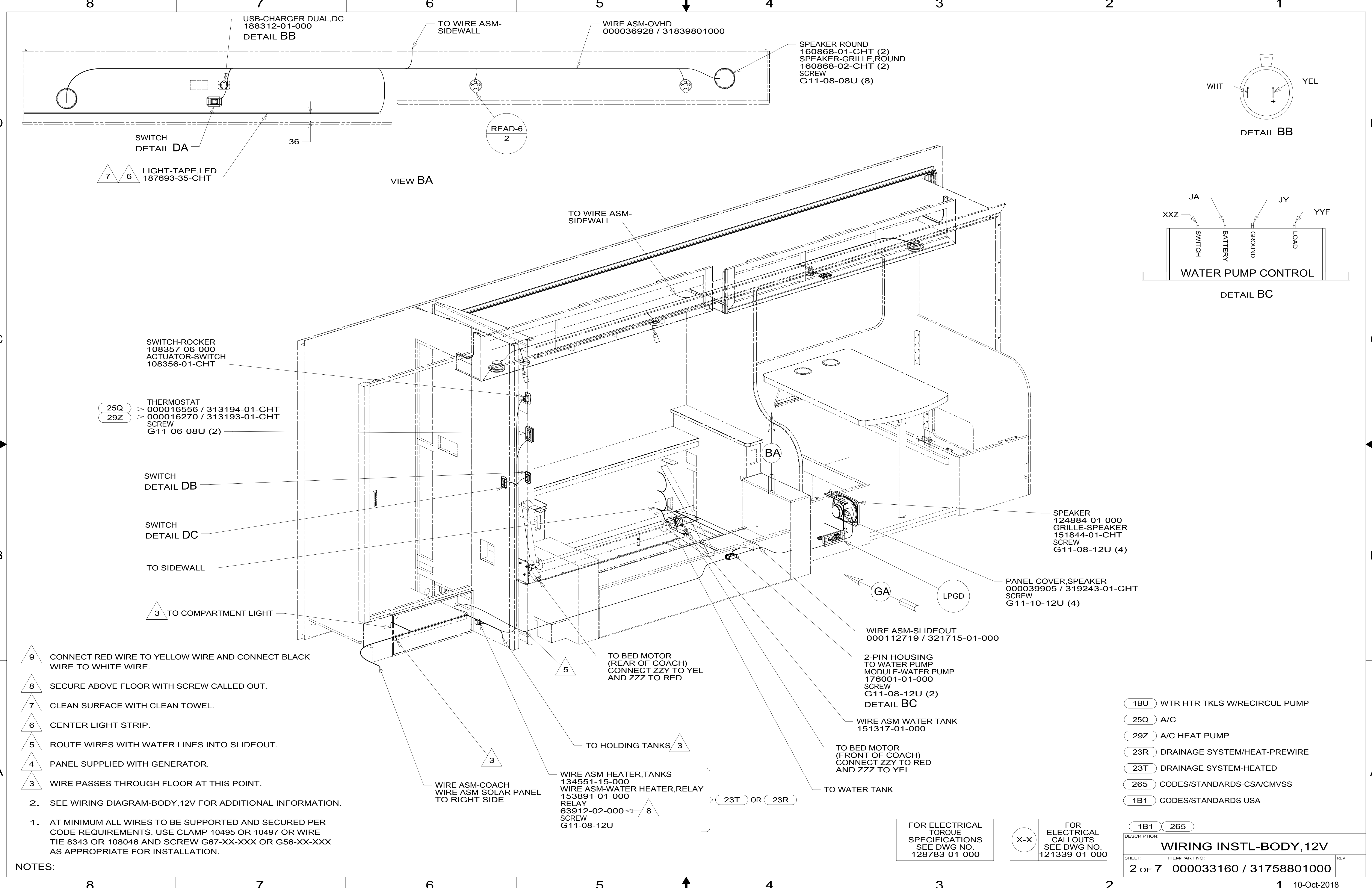
COPYRIGHT 2016 WINNEBAGO INDUSTRIES, INC.

DSNR:		ALL DIMENSIONS ARE IN MILLIMETERS	
DIFR:		MATERIAL:	
UNSPECIFIED TOLERANCES:			
WHOLE DIM (X)	: 3		
ONE-PLACE (X.X)	: 1.5		
TWO-PLACE (X.XX)	: 0.50		
ANGLE	: 1°		
REFER TO ES0018 FOR FASTENER TIGHTENING GUIDELINES		WEIGHT: (LBS)	FIRST USED: <b>18 524D</b>
DESCRIPTION: <b>WIRING INSTL-BODY, 12V</b>			
SHEET: <b>1 OF 7</b>	ITEM/PART NO: <b>000033160 / 31758801000</b>	REV:	

- 4 SPLICE YELLOW TO RED AND WHITE TO BLACK.
- 3 WIRE ROUTED THROUGH FLOOR IN THIS AREA.
2. ROUTE TANK SENSOR WIRES SO THEY DO NOT PASS OVER SENSORS. USE WIRE TIE MOUNT 155366-01-000 AS NEEDED. TANK SURFACE MUST BE CLEANED USING ISOPROPYL ALCOHOL AND PRIME WITH PRIMER 94.
1. AT MINIMUM ALL WIRES TO BE SUPPORTED AND SECURED PER CODE REQUIREMENTS. USE CLAMP 10495 OR 10497 OR WIRE TIE 8343 OR 108046 AND SCREW G67-XX-XXX OR G56-XX-XXX AS APPROPRIATE FOR INSTALLATION.

FOR ELECTRICAL  
TORQUE  
SPECIFICATIONS  
SEE DWG NO.  
128783-01-000

FOR  
ELECTRICAL  
CALLOUTS  
SEE DWG NO.  
121339-01-000



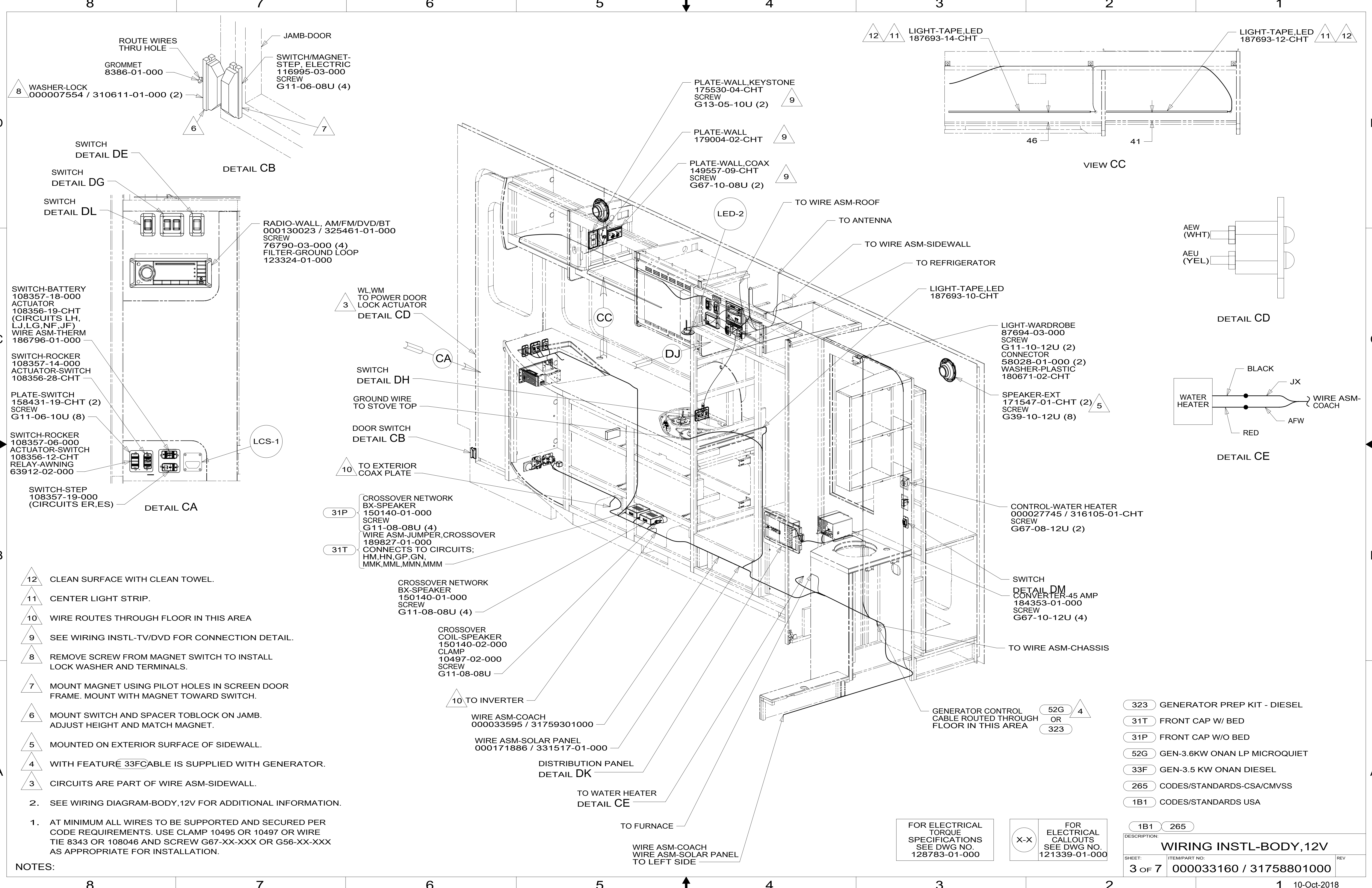
- NOTES:
1. AT MINIMUM ALL WIRES TO BE SUPPORTED AND SECURED PER CODE REQUIREMENTS. USE CLAMP 10495 OR 10497 OR WIRE TIE 8343 OR 108046 AND SCREW G67-XX-XXX OR G56-XX-XXX AS APPROPRIATE FOR INSTALLATION.
  2. SEE WIRING DIAGRAM-BODY, 12V FOR ADDITIONAL INFORMATION.
- 9 CONNECT RED WIRE TO YELLOW WIRE AND CONNECT BLACK WIRE TO WHITE WIRE.
- 8 SECURE ABOVE FLOOR WITH SCREW CALLED OUT.
- 7 CLEAN SURFACE WITH CLEAN TOWEL.
- 6 CENTER LIGHT STRIP.
- 5 ROUTE WIRES WITH WATER LINES INTO SLIDEOUT.
- 4 PANEL SUPPLIED WITH GENERATOR.
- 3 WIRE PASSES THROUGH FLOOR AT THIS POINT.

FOR ELECTRICAL TORQUE SPECIFICATIONS SEE DWG NO. 128783-01-000

FOR ELECTRICAL CALLOUTS SEE DWG NO. 121339-01-000

- 1BU WTR HTR TKLS W/RECIRCUL PUMP
- 25Q A/C
- 29Z A/C HEAT PUMP
- 23R DRAINAGE SYSTEM/HEAT-PREWIRE
- 23T DRAINAGE SYSTEM-HEATED
- 265 CODES/STANDARDS-CSA/CMVSS
- 1B1 CODES/STANDARDS USA

DESCRIPTION:		1B1 265
<b>WIRING INSTL-BODY, 12V</b>		
SHEET:	ITEM/PART NO.:	REV:
2 OF 7	000033160 / 31758801000	



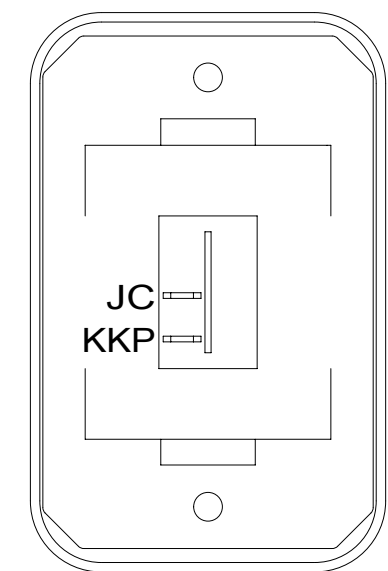
- NOTES:**
- AT MINIMUM ALL WIRES TO BE SUPPORTED AND SECURED PER CODE REQUIREMENTS. USE CLAMP 10495 OR 10497 OR WIRE TIE 8343 OR 108046 AND SCREW G67-XX-XXX OR G56-XX-XXX AS APPROPRIATE FOR INSTALLATION.
  - SEE WIRING DIAGRAM-BODY, 12V FOR ADDITIONAL INFORMATION.
- CALLOUTS:**
- 12 CLEAN SURFACE WITH CLEAN TOWEL.
  - 11 CENTER LIGHT STRIP.
  - 10 WIRE ROUTES THROUGH FLOOR IN THIS AREA
  - 9 SEE WIRING INSTL-TV/DVD FOR CONNECTION DETAIL.
  - 8 REMOVE SCREW FROM MAGNET SWITCH TO INSTALL LOCK WASHER AND TERMINALS.
  - 7 MOUNT MAGNET USING PILOT HOLES IN SCREEN DOOR FRAME. MOUNT WITH MAGNET TOWARD SWITCH.
  - 6 MOUNT SWITCH AND SPACER TOBLOCK ON JAMB. ADJUST HEIGHT AND MATCH MAGNET.
  - 5 MOUNTED ON EXTERIOR SURFACE OF SIDEWALL.
  - 4 WITH FEATURE 33FCABLE IS SUPPLIED WITH GENERATOR.
  - 3 CIRCUITS ARE PART OF WIRE ASM-SIDEWALL.

- COMPONENTS:**
- WASHER-LOCK 000007554 / 310611-01-000 (2)
  - GROMMET 8386-01-000
  - SWITCH/MAGNET-STEP, ELECTRIC 116995-03-000 SCREW G11-06-08U (4)
  - ROUTE WIRES THRU HOLE
  - JAMB-DOOR
  - PLATE-WALL,KEYSTONE 175530-04-CHT SCREW G13-05-10U (2)
  - PLATE-WALL 179004-02-CHT
  - PLATE-WALL,COAX 149557-09-CHT SCREW G67-10-08U (2)
  - LED-2
  - TO WIRE ASM-ROOF
  - TO ANTENNA
  - TO WIRE ASM-SIDEWALL
  - TO REFRIGERATOR
  - LIGHT-TAPE,LED 187693-10-CHT
  - LIGHT-WARDROBE 87694-03-000 SCREW G11-10-12U (2) CONNECTOR 58028-01-000 (2) WASHER-PLASTIC 180671-02-CHT
  - SPEAKER-EXT 171547-01-CHT (2) SCREW G39-10-12U (8)
  - CONTROL-WATER HEATER 000027745 / 316105-01-CHT SCREW G67-08-12U (2)
  - SWITCH CONVERTER 45 AMP 184353-01-000 SCREW G67-10-12U (4)
  - TO WIRE ASM-CHASSIS
  - GENERATOR CONTROL CABLE ROUTED THROUGH FLOOR IN THIS AREA
  - WIRE ASM-COACH 000033595 / 31759301000
  - WIRE ASM-SOLAR PANEL 000171886 / 331517-01-000
  - DISTRIBUTION PANEL DETAIL DK
  - TO WATER HEATER DETAIL CE
  - TO FURNACE
  - WIRE ASM-COACH WIRE ASM-SOLAR PANEL TO LEFT SIDE
  - CROSSOVER NETWORK BX-SPEAKER 150140-01-000 SCREW G11-08-08U (4) WIRE ASM-JUMPER,CROSSOVER 189827-01-000 CONNECTS TO CIRCUITS; HM,HN,GP,GN,MMK,MML,MMN,MMM
  - CROSSOVER COIL-SPEAKER 150140-02-000 CLAMP 10497-02-000 SCREW G11-08-08U
  - TO INVERTER
  - TO EXTERIOR COAX PLATE
  - DOOR SWITCH DETAIL CB
  - GROUND WIRE TO STOVE TOP
  - SWITCH DETAIL DH
  - WL,WM TO POWER DOOR LOCK ACTUATOR DETAIL CD
  - SWITCH-BATTERY 108357-18-000 ACTUATOR 108356-19-CHT (CIRCUITS LH, LJ,LG,NF,JF) WIRE ASM-THERM 186796-01-000
  - SWITCH-ROCKER 108357-14-000 ACTUATOR-SWITCH 108356-28-CHT
  - PLATE-SWITCH 158431-19-CHT (2) SCREW G11-06-10U (8)
  - SWITCH-ROCKER 108357-06-000 ACTUATOR-SWITCH 108356-12-CHT RELAY-AWNING 63912-02-000
  - SWITCH-STEP 108357-19-000 (CIRCUITS ER,ES)
  - RADIO-WALL, AM/FM/DVD/BT 000130023 / 325461-01-000 SCREW 76790-03-000 (4) FILTER-GROUND LOOP 123324-01-000

FOR ELECTRICAL TORQUE SPECIFICATIONS SEE DWG NO. 128783-01-000

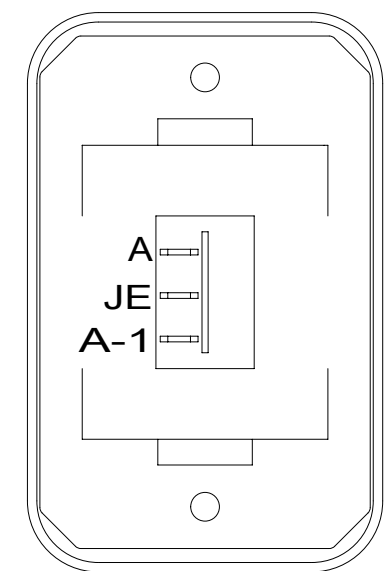
FOR ELECTRICAL CALLOUTS SEE DWG NO. 121339-01-000

- DETAILS:**
- DETAIL CA: SWITCHES
  - DETAIL CB: RADIO
  - DETAIL CD: WATER HEATER
  - DETAIL DE: SWITCH
  - DETAIL DG: SWITCH
  - DETAIL DL: SWITCH
  - DETAIL DM: CONVERTER
  - DETAIL CE: WATER HEATER WIRING
- LEGEND:**
- 323 GENERATOR PREP KIT - DIESEL
  - 31T FRONT CAP W/ BED
  - 31P FRONT CAP W/O BED
  - 52G GEN-3.6KW ONAN LP MICROQUIET
  - 33F GEN-3.5 KW ONAN DIESEL
  - 265 CODES/STANDARDS-CSA/CMVSS
  - 1B1 CODES/STANDARDS USA
- DESCRIPTION:** WIRING INSTL-BODY, 12V
- SHEET: 3 OF 7    ITEM/PART NO.: 000033160 / 31758801000    REV: 10-Oct-2018



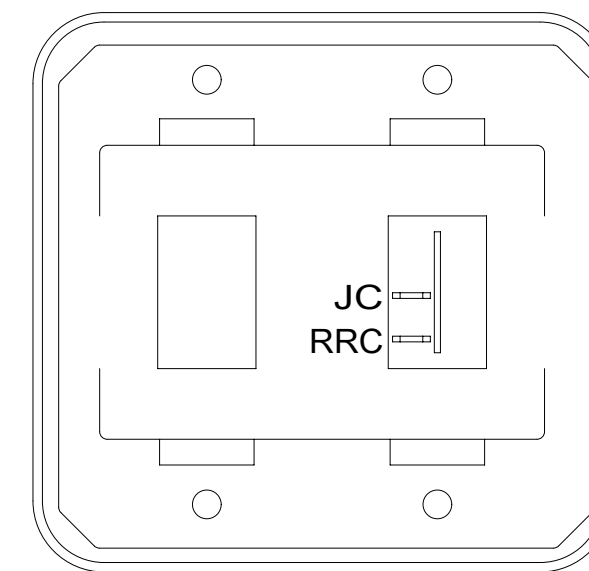
SWITCH-ROCKER  
135740-01-CHT  
SWITCH-BASE  
135741-01-CHT  
SWITCH-BEZEL  
135742-01-CHT  
SCREW  
G11-08-08U (2)

DETAIL DA



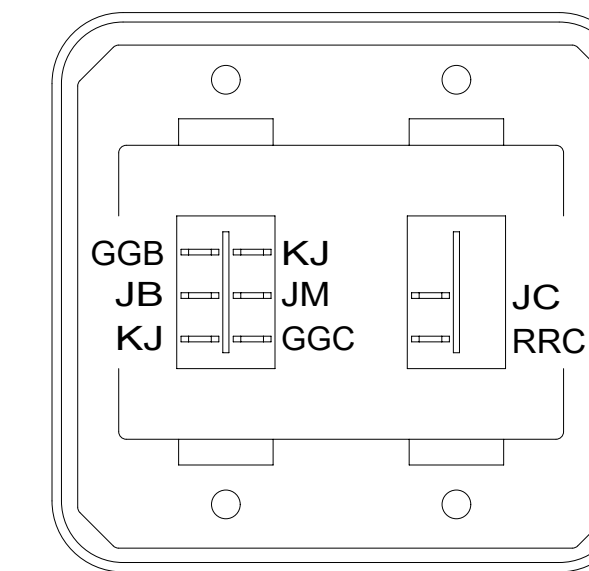
SWITCH-ROCKER  
135740-04-CHT  
SWITCH-BASE  
135741-01-CHT  
SWITCH-BEZEL  
135742-01-CHT  
SCREW  
G11-08-08U (2)  
WIRE ASM-RESISTOR  
140195-01-000

DETAIL DE



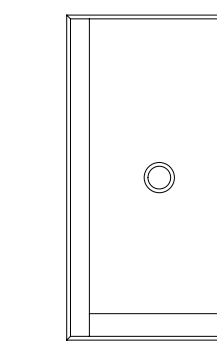
SWITCH-ROCKER  
135740-01-CHT  
SWITCH-BLANK  
138253-01-CHT  
SWITCH-BASE  
135741-02-CHT  
SWITCH-BEZEL  
135742-02-CHT  
SCREW  
G11-06-16U (4)

DETAIL DG 41M



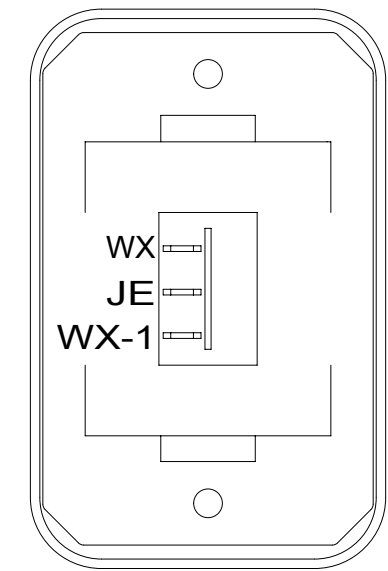
SWITCH-ROCKER  
135740-01-CHT  
135740-03-CHT  
SWITCH-BASE  
135741-02-CHT  
SWITCH-BEZEL  
135742-02-CHT  
SCREW  
G11-06-16U (4)

DETAIL DG 316



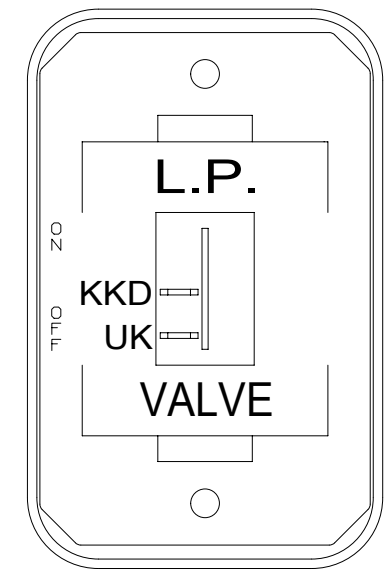
SWITCH  
108357-21-000  
ACTUATOR  
108356-23-CHT  
PLATE-SWITCH  
144363-02-CHT  
SCREW  
G11-06-10U (2)

DETAIL DM



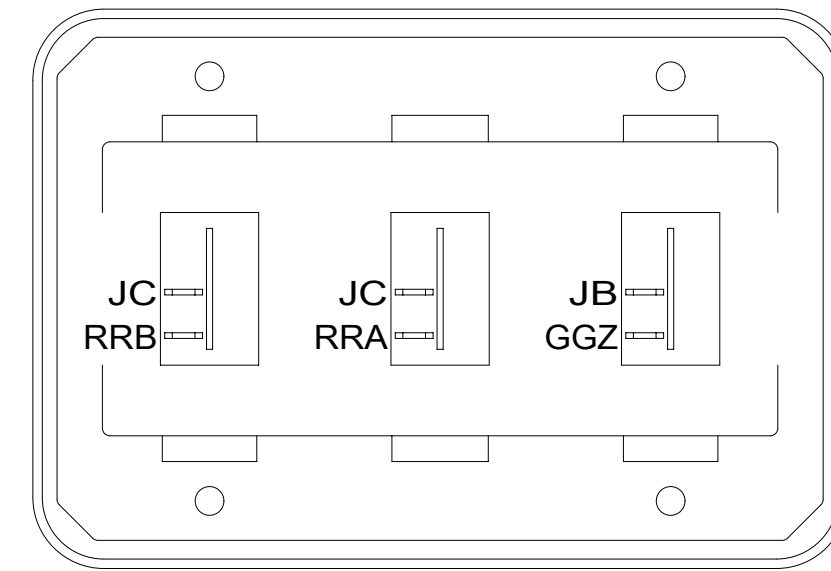
SWITCH-ROCKER  
135740-04-CHT  
SWITCH-BASE  
135741-01-CHT  
SWITCH-BEZEL  
135742-01-CHT  
SCREW  
G11-08-08U (2)  
WIRE ASM-RESISTOR  
140195-01-000

DETAIL DB



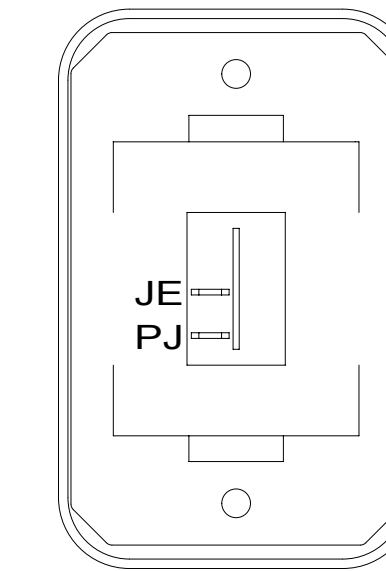
SWITCH-ROCKER  
135740-01-CHT  
SWITCH-BASE  
135741-01-CHT  
SWITCH-BEZEL  
135742-59-CHT  
SCREW  
G11-08-08U (2)

DETAIL DF



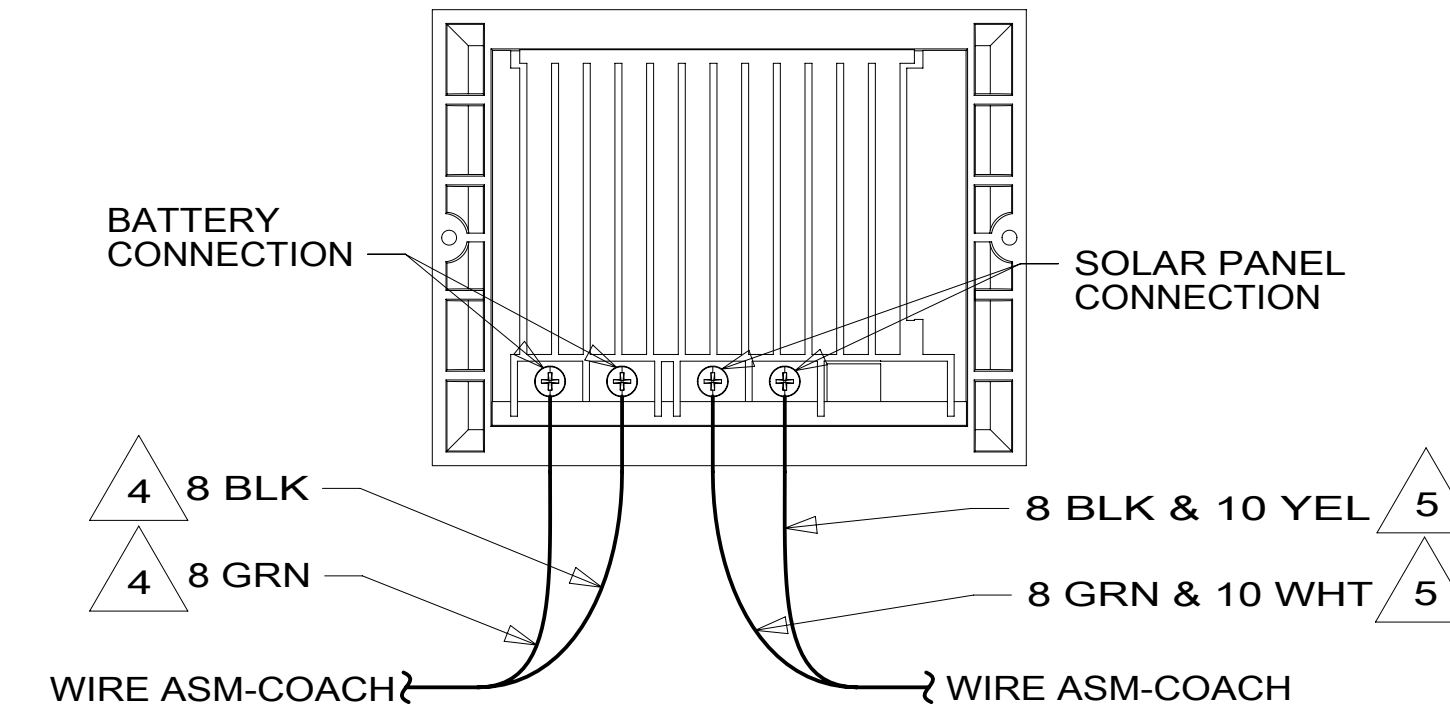
SWITCH-ROCKER  
135740-01-CHT (3)  
SWITCH-BASE  
135741-03-CHT  
SWITCH-BEZEL  
135742-03-CHT  
SCREW  
G11-08-08U (4)

DETAIL DH

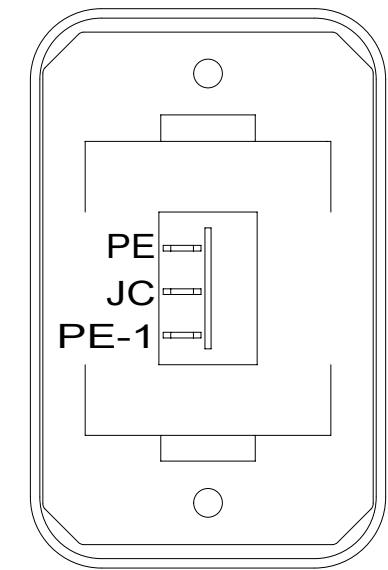


SWITCH-ROCKER  
135740-01-CHT  
SWITCH-BASE  
135741-01-CHT  
SWITCH-BEZEL  
135742-01-CHT  
SCREW  
G11-08-08U (2)

DETAIL DL

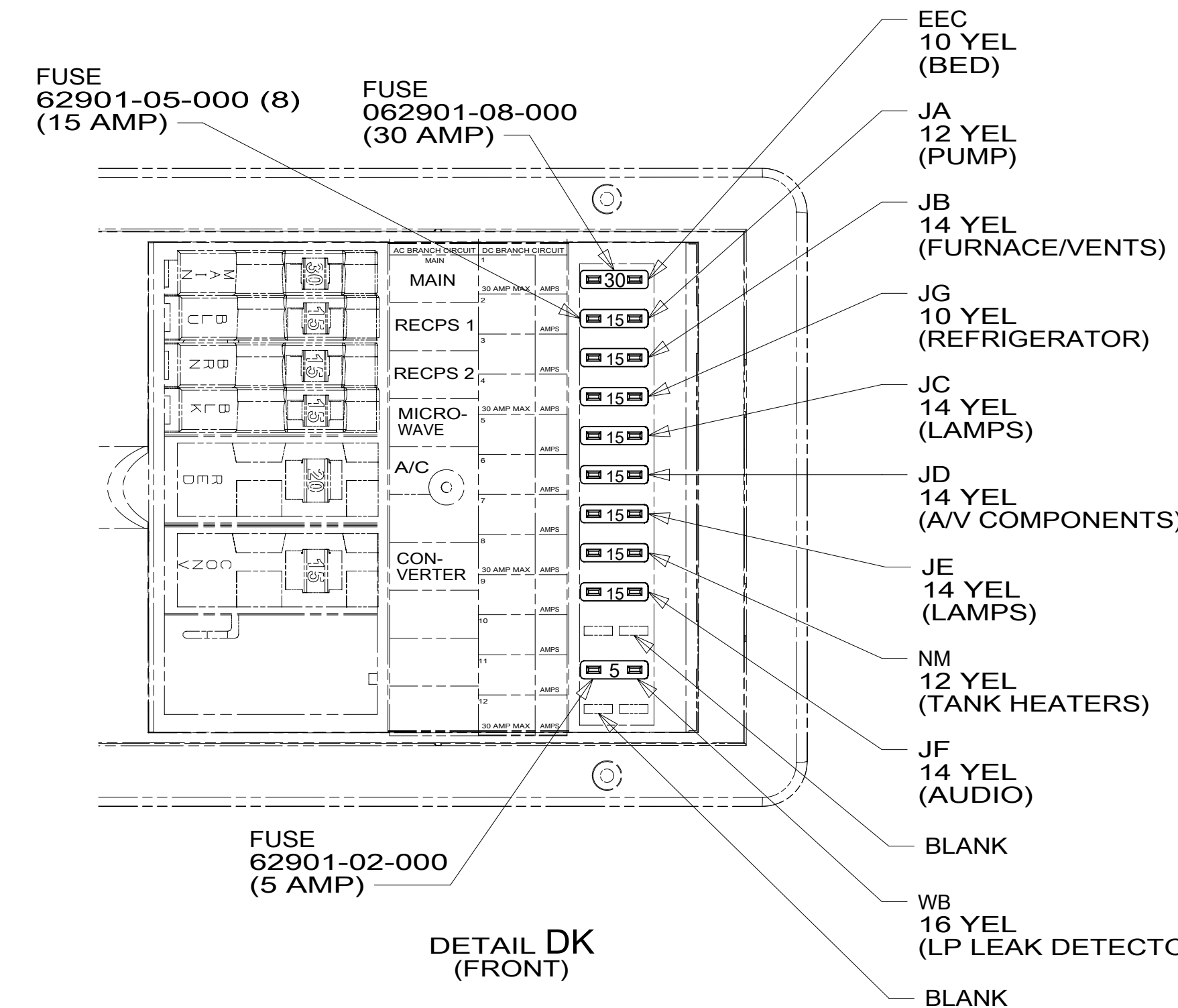


DETAIL DN

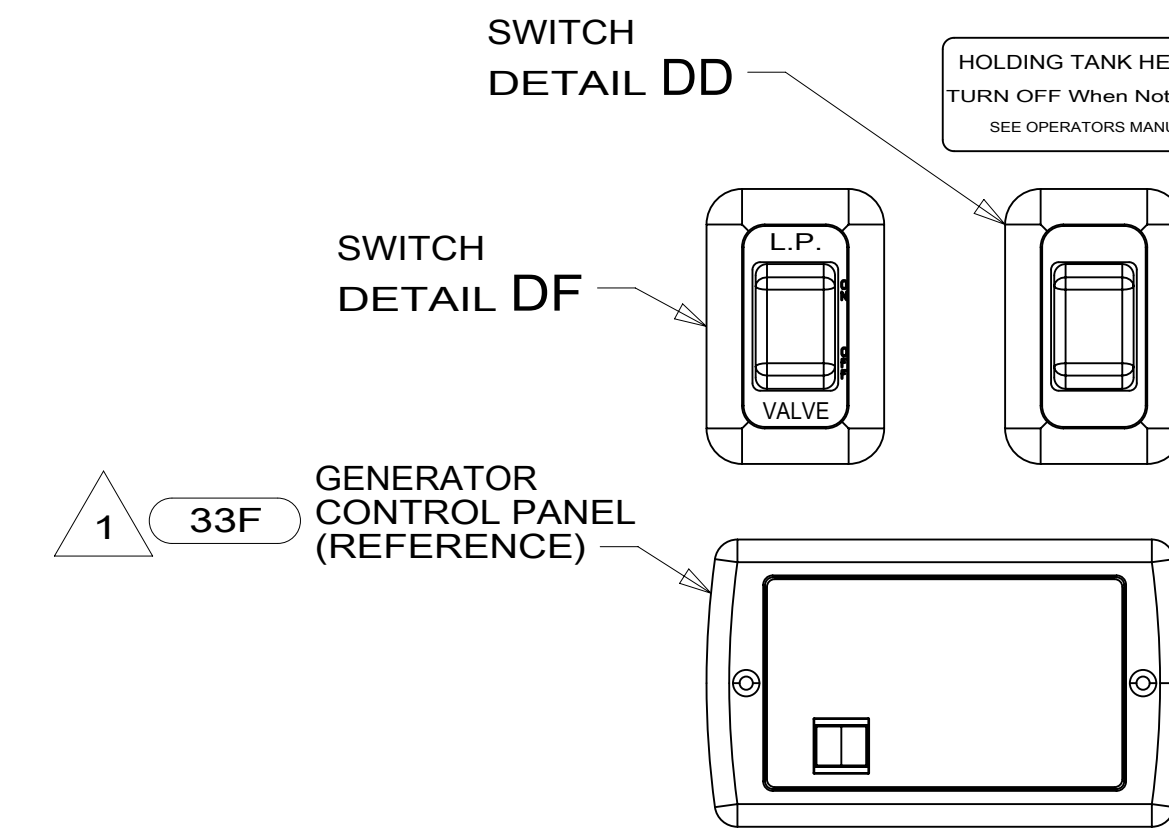


SWITCH-ROCKER  
135740-04-CHT  
SWITCH-BASE  
135741-01-CHT  
SWITCH-BEZEL  
135742-01-CHT  
SCREW  
G11-08-08U (2)  
WIRE ASM-RESISTOR  
140195-01-000

DETAIL DC



DETAIL DK (FRONT)



SWITCH  
DETAIL DD

SWITCH  
DETAIL DF

GENERATOR  
CONTROL PANEL  
(REFERENCE)

SWITCH  
108357-18-000  
ACTUATOR  
108356-31-CHT  
PLATE-SWITCH  
144363-02-CHT  
SCREW  
G11-08-10U (2)

DETAIL DJ

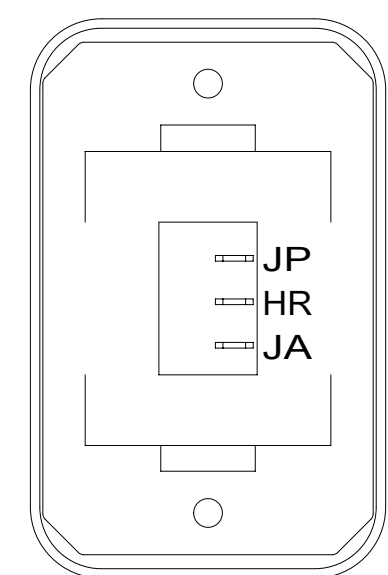
MONITOR PANEL  
175724-06-000  
175724-03-000  
SCREW  
G11-08-12U (4)

LABEL-WARNING  
116549-01-000

CONTROL-CHARGE,  
SOLAR 30 AMP  
191278-01-000  
SCREW  
G11-08-08U (2)  
DETAIL DN

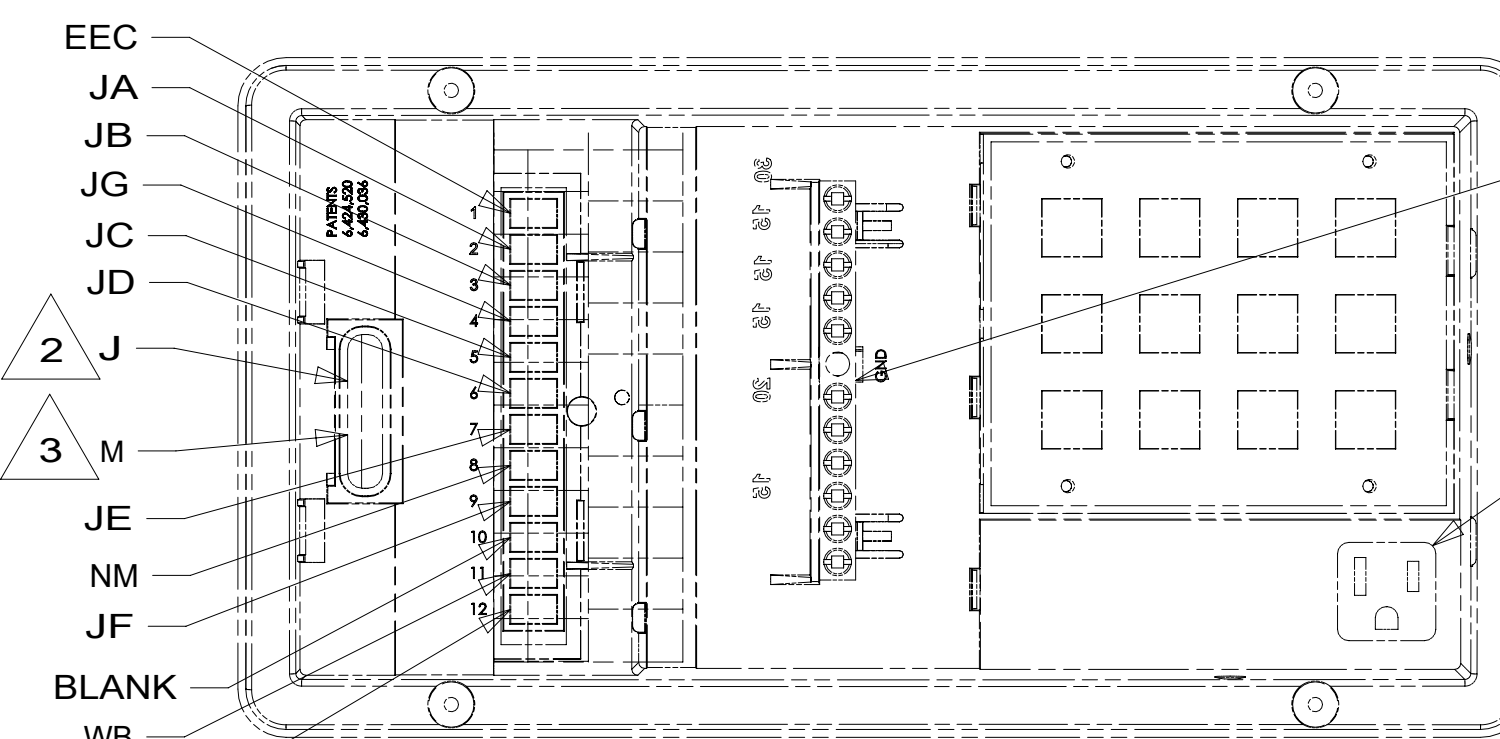
REMOTE PANEL-INVERTER  
00037772 / 318694-01-CHT  
SCREW  
000G11-06-08U (2)

HOLDING TANK HEATER  
TURN OFF When Not In Use  
SEE OPERATORS MANUAL



DETAIL DD

SWITCH-BLANK  
138253-01-CHT  
SWITCH-ROCKER  
135740-06-CHT  
SWITCH-BASE  
135741-01-CHT  
SWITCH-BEZEL  
135742-01-CHT  
SCREW  
G11-08-08U (2)  
LABEL-SWITCH  
134563-01-CHT



DETAIL DK (REAR)

GROUND BAR  
CIRCUITS;  
ND,NF,JN,NE,JP,  
PM,UK,NC,JX,FFE,  
JM,MS,JY,EED

PLUG CONVERTER  
POWER CORD  
INTO CONVIENCE  
RECPTACLE

FOR ELECTRICAL  
TORQUE  
SPECIFICATIONS  
SEE DWG NO.  
128783-01-000

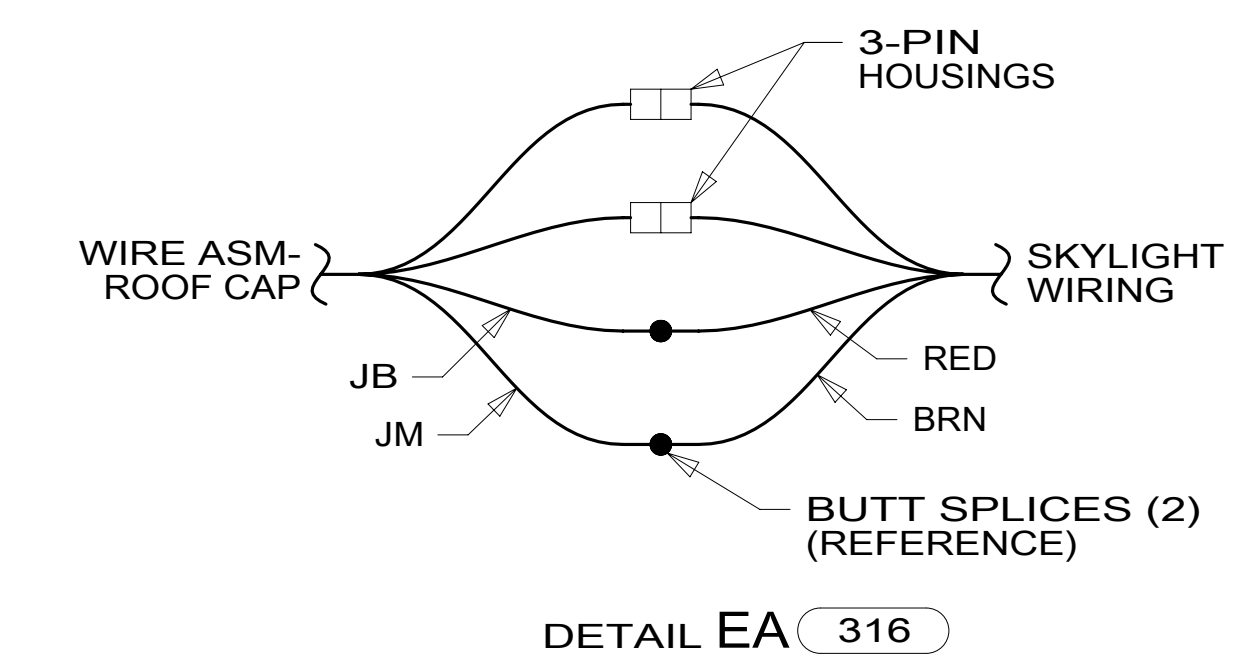
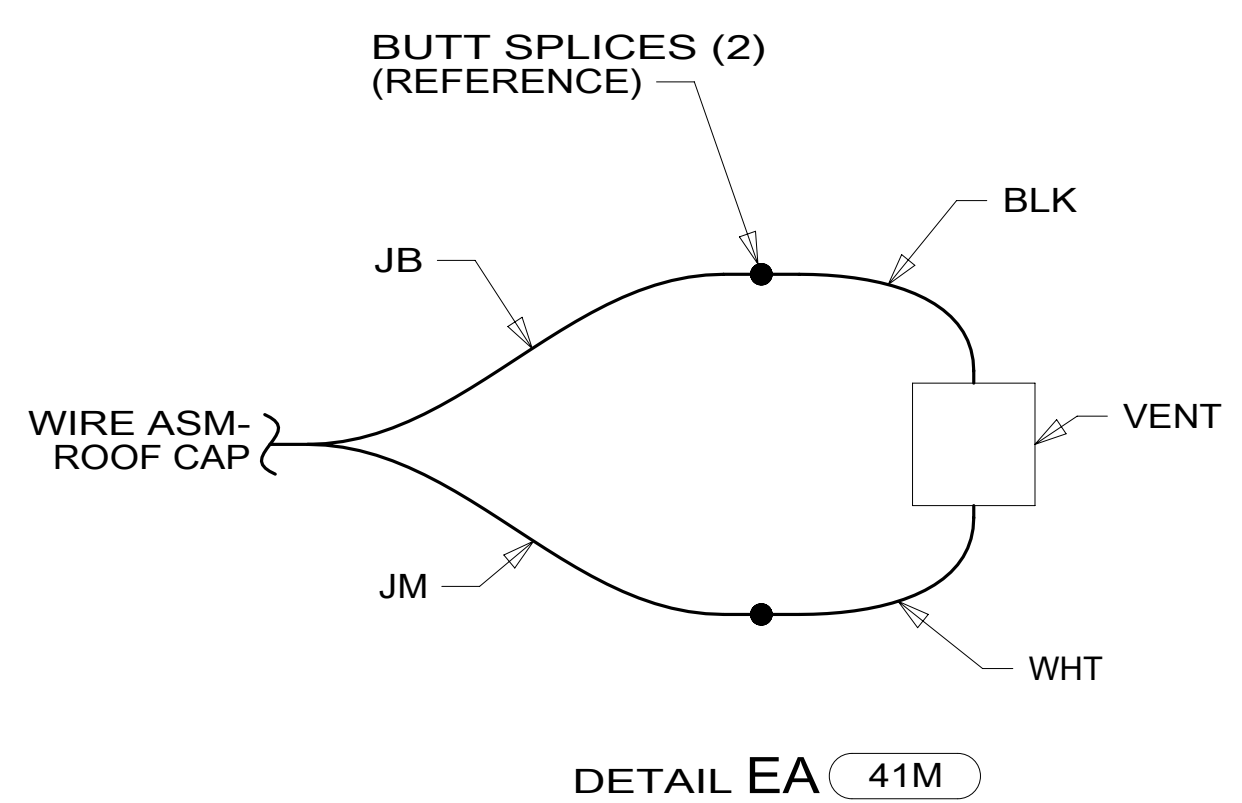
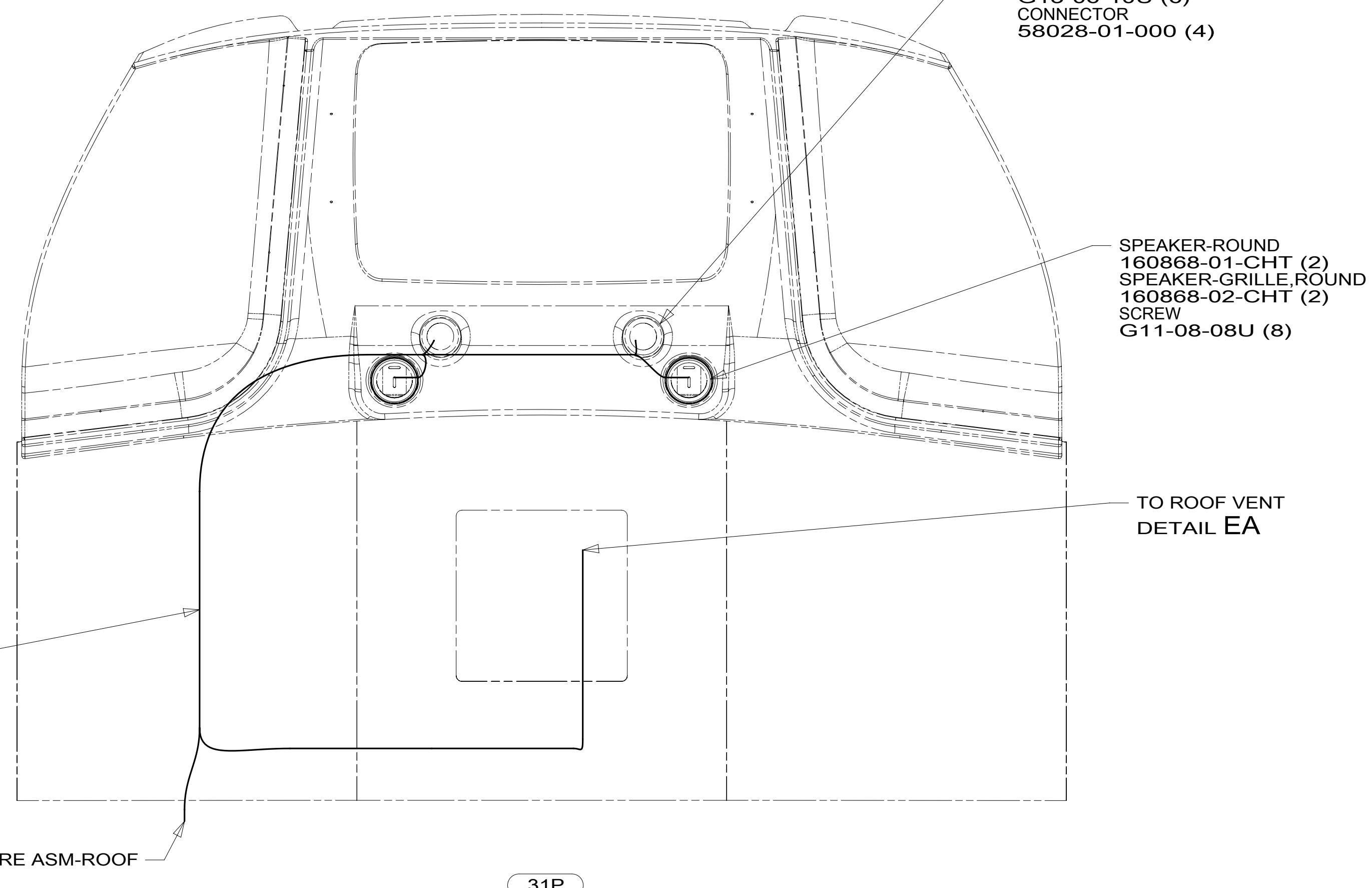
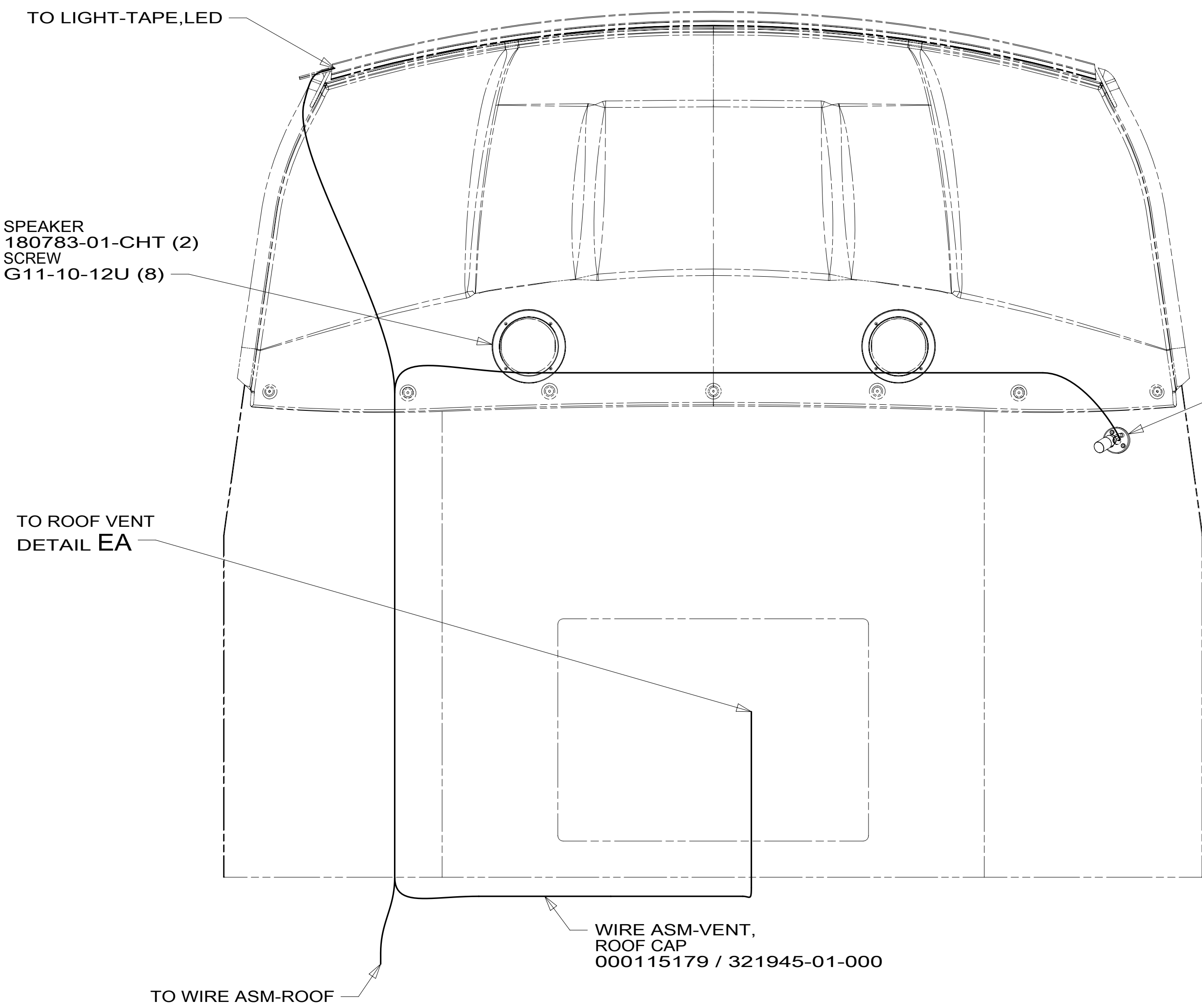
FOR ELECTRICAL  
CALLOUTS  
SEE DWG NO.  
121339-01-000

- 33F GEN-3.2 KW ONAN DIESEL
- 52G GEN-3.6KW ONAN LP MICROQUIET
- 316 SKYLIGHT/ROOF VENT, POWER
- 41M VENT-POWER VENTILATOR
- 1JD DRAINAGE SYSTEM-HEATED-W/O
- 23R DRAINAGE SYSTEM/HEAT-PREWIRE
- 23T DRAINAGE SYSTEM-HEATED
- 265 CODES/STANDARDS-CSA/CMVSS
- 1B1 CODES/STANDARDS USA

DESCRIPTION:	1B1 265	
<b>WIRING INSTL-BODY, 12V</b>		
SHEET:	ITEM/PART NO:	REV
4 OF 7	000033160 / 31758801000	

- NOTES:
- 5 WIRE IS MARKED WITH YELLOW TAPE.
  - 4 WIRE IS MARKED WITH GOLD TAPE.
  - 3 CIRCUIT FROM WIRE ASM-COACH.
  - 2 CIRCUIT FROM WIRE ASM-CHASSIS.
  - 1 PANEL SUPPLIED WITH GENERATOR.

8 7 6 5 4 3 2 1



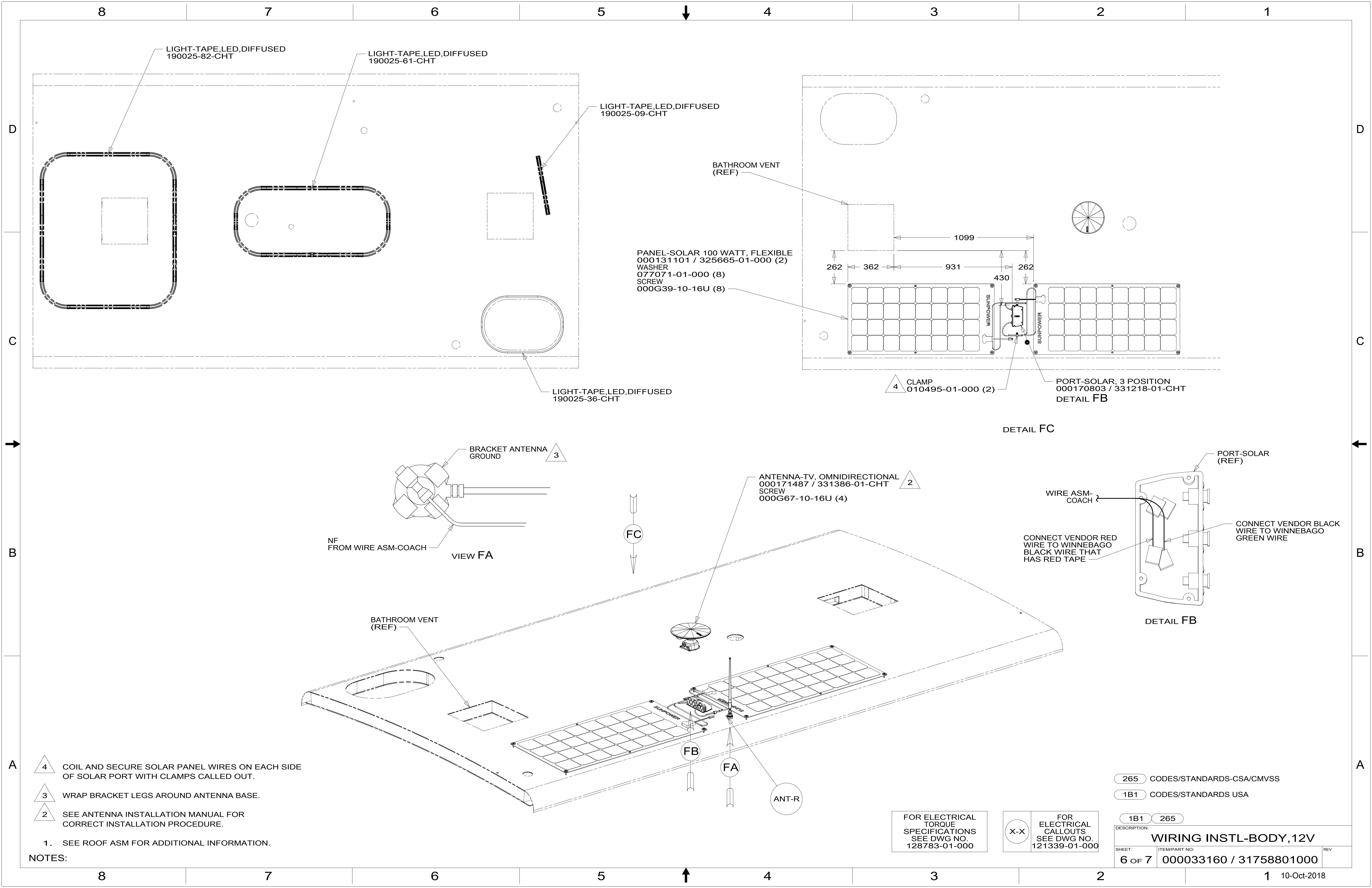
- 31P FRONT CAP W/O BED
- 31T FRONT CAP W/BED
- 316 SKYLIGHT/ROOF VENT, POWER
- 41M VENT-POWER VENTILATOR
- 265 CODES/STANDARDS-CSA/CMVSS
- 1B1 CODES/STANDARDS USA

FOR ELECTRICAL TORQUE SPECIFICATIONS SEE DWG NO. 128783-01-000

FOR ELECTRICAL CALLOUTS SEE DWG NO. 121339-01-000

DESCRIPTION:		1B1 265	
<b>WIRING INSTL-BODY, 12V</b>			
SHEET:	ITEM/PART NO.:	REV:	
5 OF 7	000033160 / 31758801000		

8 7 6 5 4 3 2 1 10-Oct-2018



LIGHT-TAPE,LED,DIFFUSED  
190025-82-CHT

LIGHT-TAPE,LED,DIFFUSED  
190025-61-CHT

LIGHT-TAPE,LED,DIFFUSED  
190025-09-CHT

BATHROOM VENT  
(REF)

PANEL-SOLAR 100 WATT, FLEXIBLE  
000131101 / 325665-01-000 (2)  
WASHER  
077071-01-000 (8)  
SCREW  
000G39-10-16U (8)

1099  
262 362 931 262  
430

4 CLAMP  
010495-01-000 (2)

PORT-SOLAR, 3 POSITION  
000170803 / 331218-01-CHT  
DETAIL FB

DETAIL FC

LIGHT-TAPE,LED,DIFFUSED  
190025-36-CHT

BRACKET ANTENNA  
GROUND 3

ANTENNA-TV, OMNIDIRECTIONAL  
000171487 / 331386-01-CHT 2  
SCREW  
000G67-10-16U (4)

PORT-SOLAR  
(REF)

NF FROM WIRE ASM-COACH  
VIEW FA

WIRE ASM-COACH  
CONNECT VENDOR RED WIRE TO WINNEBAGO  
BLACK WIRE THAT HAS RED TAPE

CONNECT VENDOR BLACK WIRE TO WINNEBAGO  
GREEN WIRE

DETAIL FB

BATHROOM VENT  
(REF)

- 4 COIL AND SECURE SOLAR PANEL WIRES ON EACH SIDE OF SOLAR PORT WITH CLAMPS CALLED OUT.
- 3 WRAP BRACKET LEGS AROUND ANTENNA BASE.
- 2 SEE ANTENNA INSTALLATION MANUAL FOR CORRECT INSTALLATION PROCEDURE.

1. SEE ROOF ASM FOR ADDITIONAL INFORMATION.

NOTES:

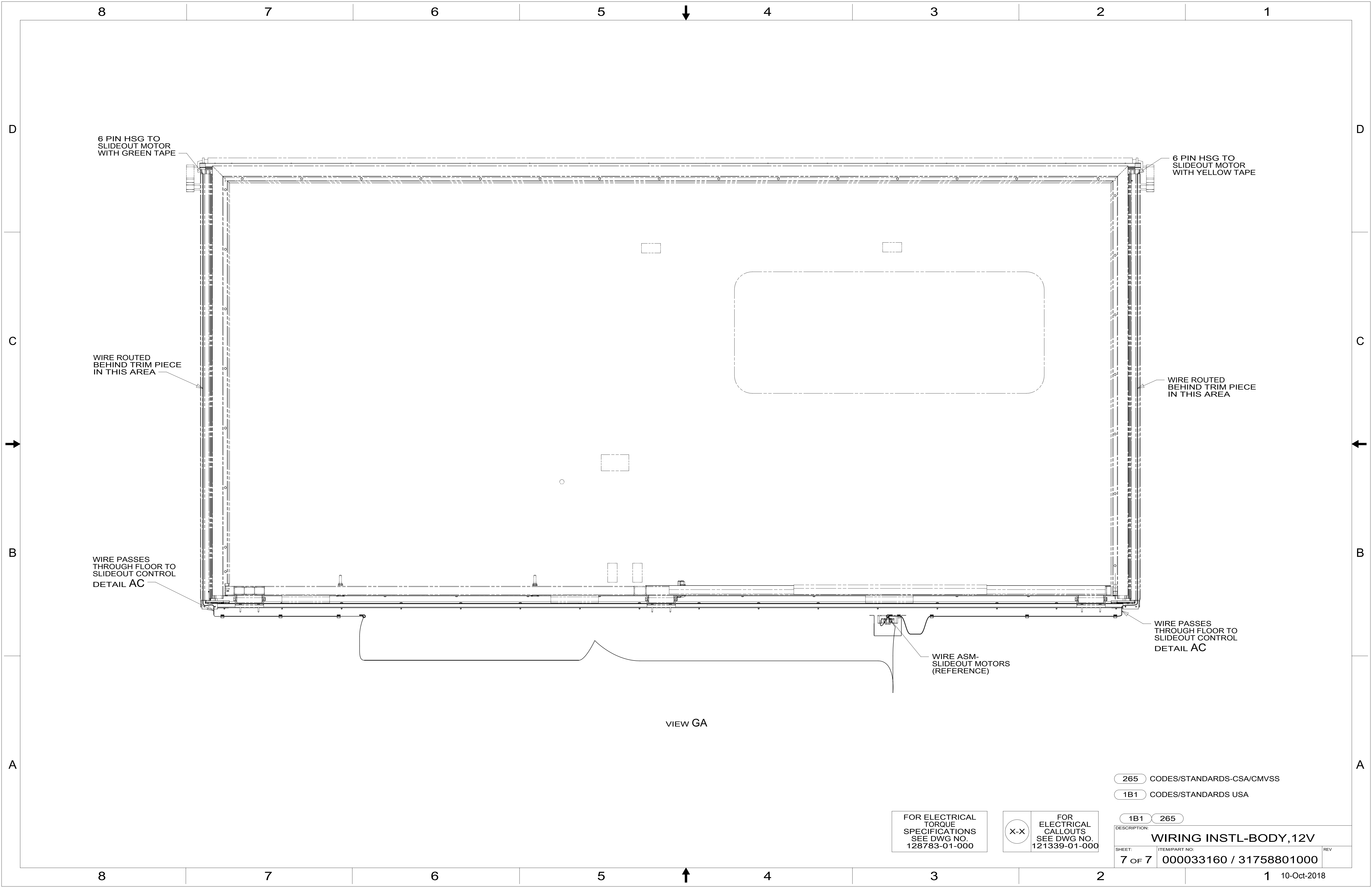
FOR ELECTRICAL TORQUE SPECIFICATIONS SEE DWG NO. 128783-01-000

FOR ELECTRICAL CALLOUTS SEE DWG NO. 121339-01-000

265 CODES/STANDARDS-CSA/CMVSS  
1B1 CODES/STANDARDS USA

1B1 265  
DESCRIPTION:  
**WIRING INSTL-BODY, 12V**

SHEET: 6 OF 7 ITEM/PART NO.: 000033160 / 31758801000 REV



6 PIN HSG TO SLIDEOUT MOTOR WITH GREEN TAPE

6 PIN HSG TO SLIDEOUT MOTOR WITH YELLOW TAPE

WIRE ROUTED BEHIND TRIM PIECE IN THIS AREA

WIRE ROUTED BEHIND TRIM PIECE IN THIS AREA

WIRE PASSES THROUGH FLOOR TO SLIDEOUT CONTROL  
DETAIL AC

WIRE PASSES THROUGH FLOOR TO SLIDEOUT CONTROL  
DETAIL AC

WIRE ASM- SLIDEOUT MOTORS (REFERENCE)

VIEW GA

265 CODES/STANDARDS-CSA/CMVSS

1B1 CODES/STANDARDS USA

1B1 265

FOR ELECTRICAL TORQUE SPECIFICATIONS SEE DWG NO. 128783-01-000

FOR ELECTRICAL CALLOUTS SEE DWG NO. 121339-01-000

DESCRIPTION: WIRING INSTL-BODY, 12V

SHEET: 7 OF 7 ITEM/PART NO.: 000033160 / 31758801000 REV

1 10-Oct-2018