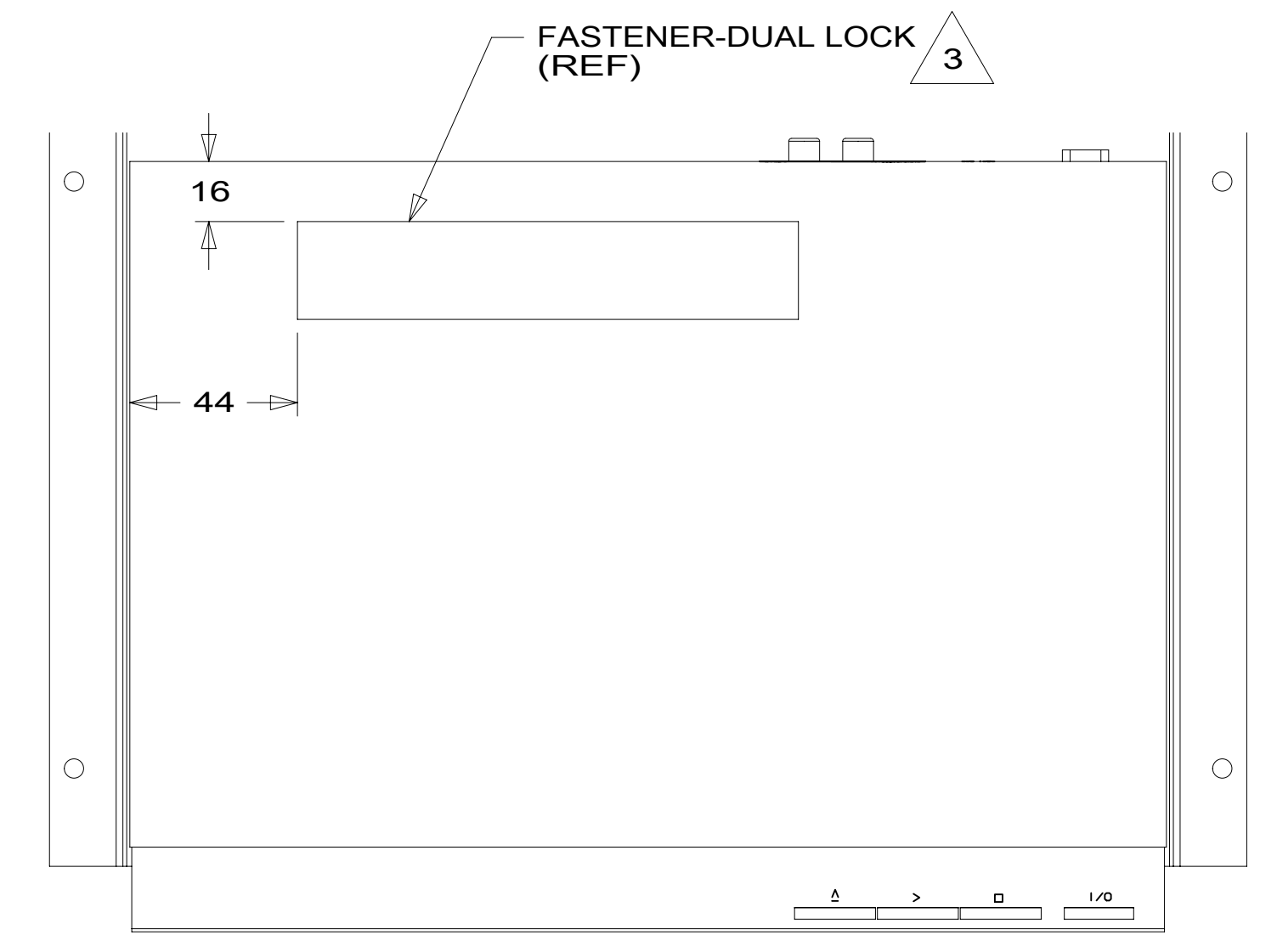
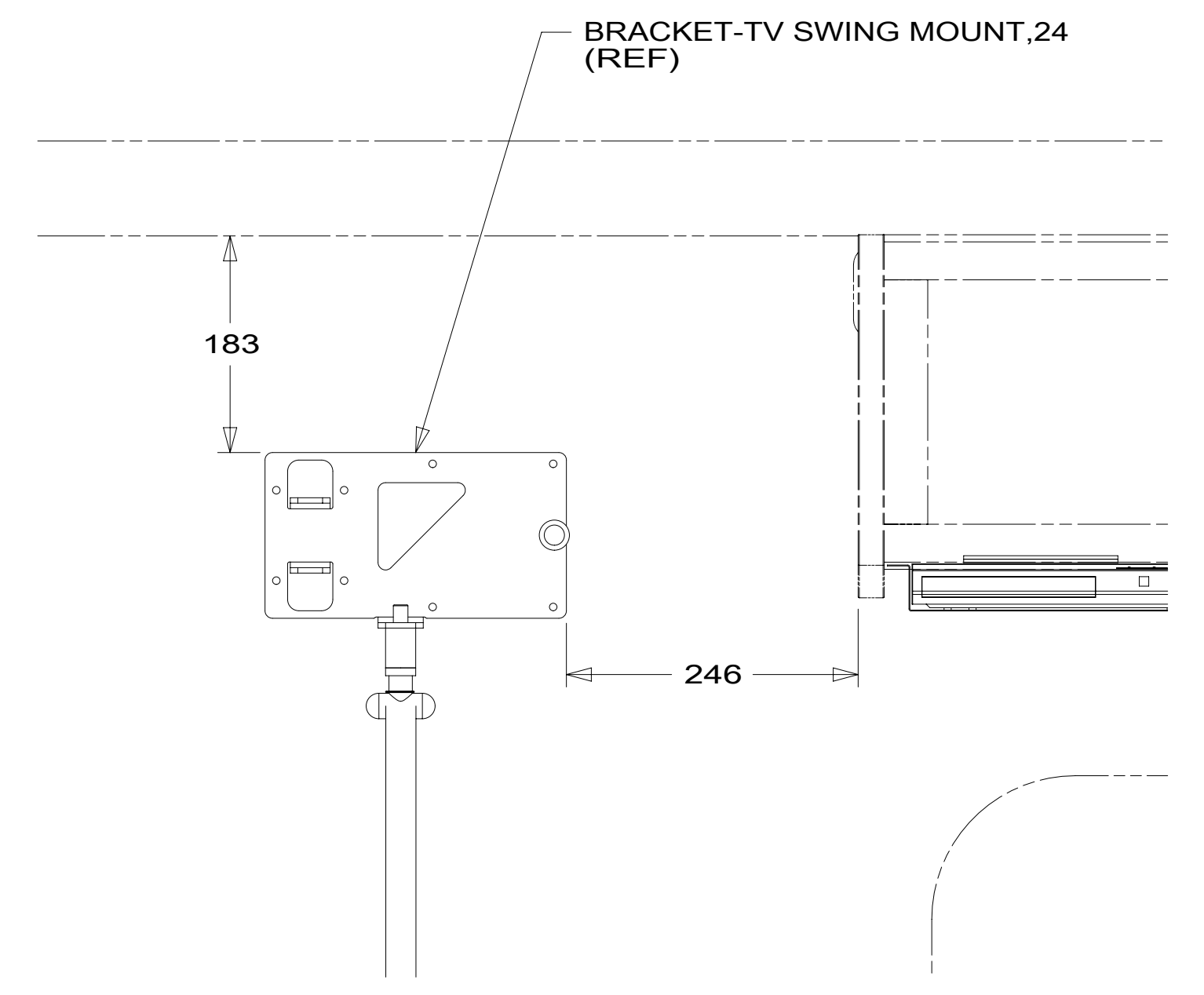
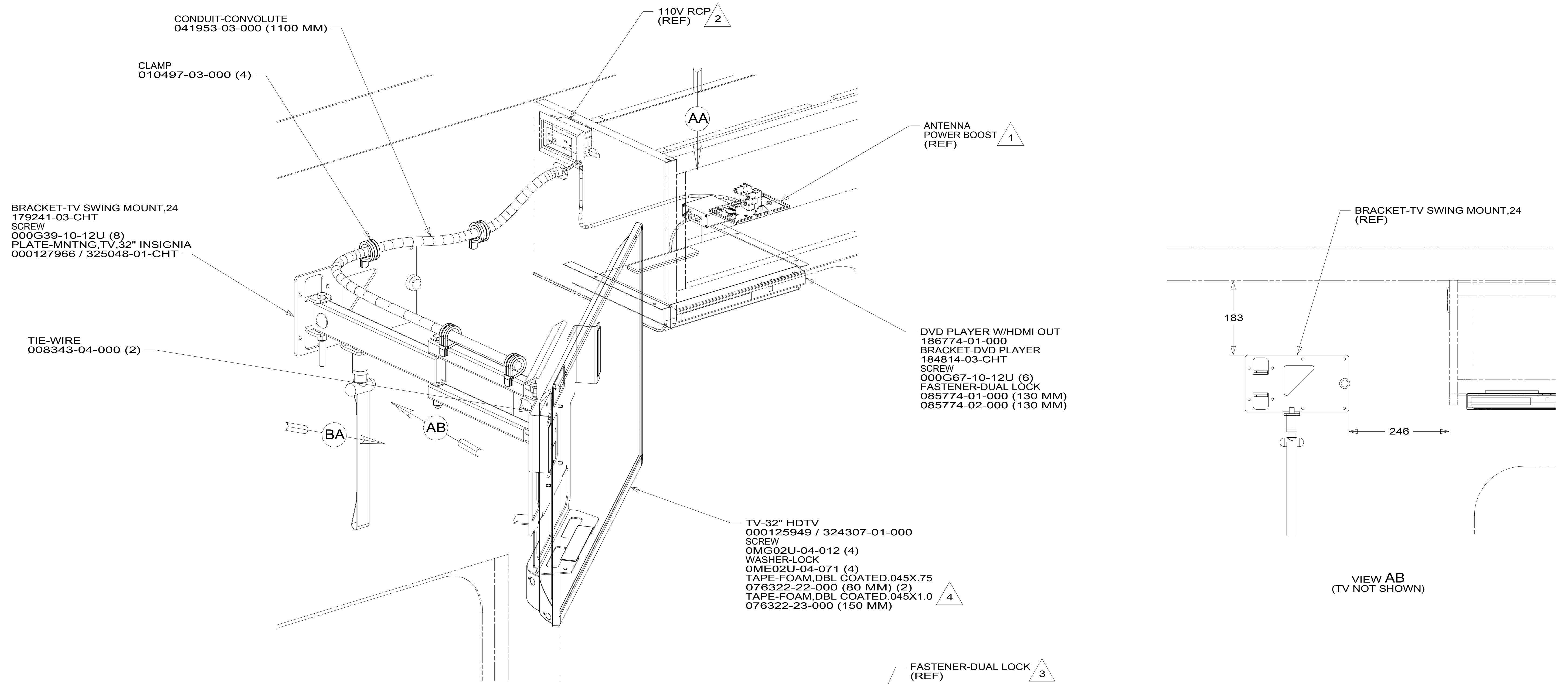


8 7 6 5 4 3 2 1



- NOTES:
- 4 PREP BOTH SURFACES WITH ADHESIVE-PROMOTER 087211-01-000.
 - 3 ATTACH FASTENER-DUAL LOCK TO DVD PLAYER POSITIONED AS SHOWN.
 - 2 SEE WIRING INSTL-BODY,110V FOR ADDITIONAL INFORMATION.
 - 1 SEE WIRING INSTL-BODY,12V FOR ADDITIONAL INFORMATION.

FOR ELECTRICAL TORQUE SPECIFICATIONS SEE DWG NO. 128783-01-000

FOR ELECTRICAL CALLOUTS SEE DWG NO. 121339-01-000

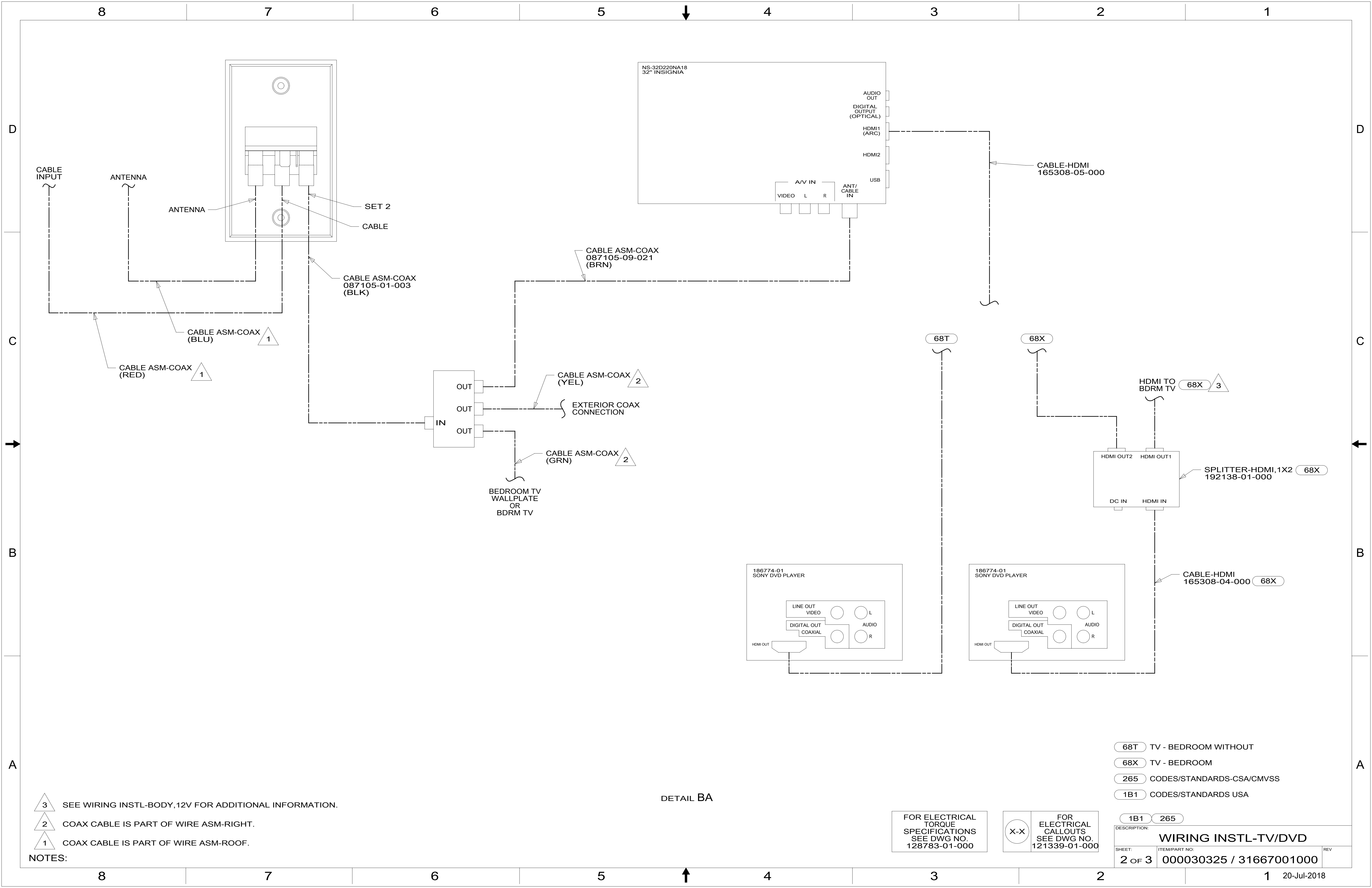
- 68R TV - FRONT
- 265 CODES/STANDARDS-CSA/CMVSS
- 1B1 CODES/STANDARDS USA

1B1 265 68R

WINNEBAGO
COPYRIGHT 2016 WINNEBAGO INDUSTRIES, INC.

DSNR:	ALL DIMENSIONS ARE IN MILLIMETERS	
DFFR:		
UNSPECIFIED TOLERANCES:	MATERIAL:	
WHOLE DIM (X) :		
ONE-PLACE (X.X) :		
TWO-PLACE (X.XX) :		
ANGLE :		
REFER TO ES0018 FOR FASTENER TIGHTENING GUIDELINES	WEIGHT: (LBS)	FIRST USED:
		18 322M
DESCRIPTION:		
WIRING INSTL-TV/DVD		
SHEET:	ITEM/PART NO.:	REV:
1 OF 3	000030325 / 31667001000	

8 7 6 5 4 3 2 1 REF: 1 20-Jul-2018



- NOTES:
- 3 SEE WIRING INSTL-BODY, 12V FOR ADDITIONAL INFORMATION.
 - 2 COAX CABLE IS PART OF WIRE ASM-RIGHT.
 - 1 COAX CABLE IS PART OF WIRE ASM-ROOF.

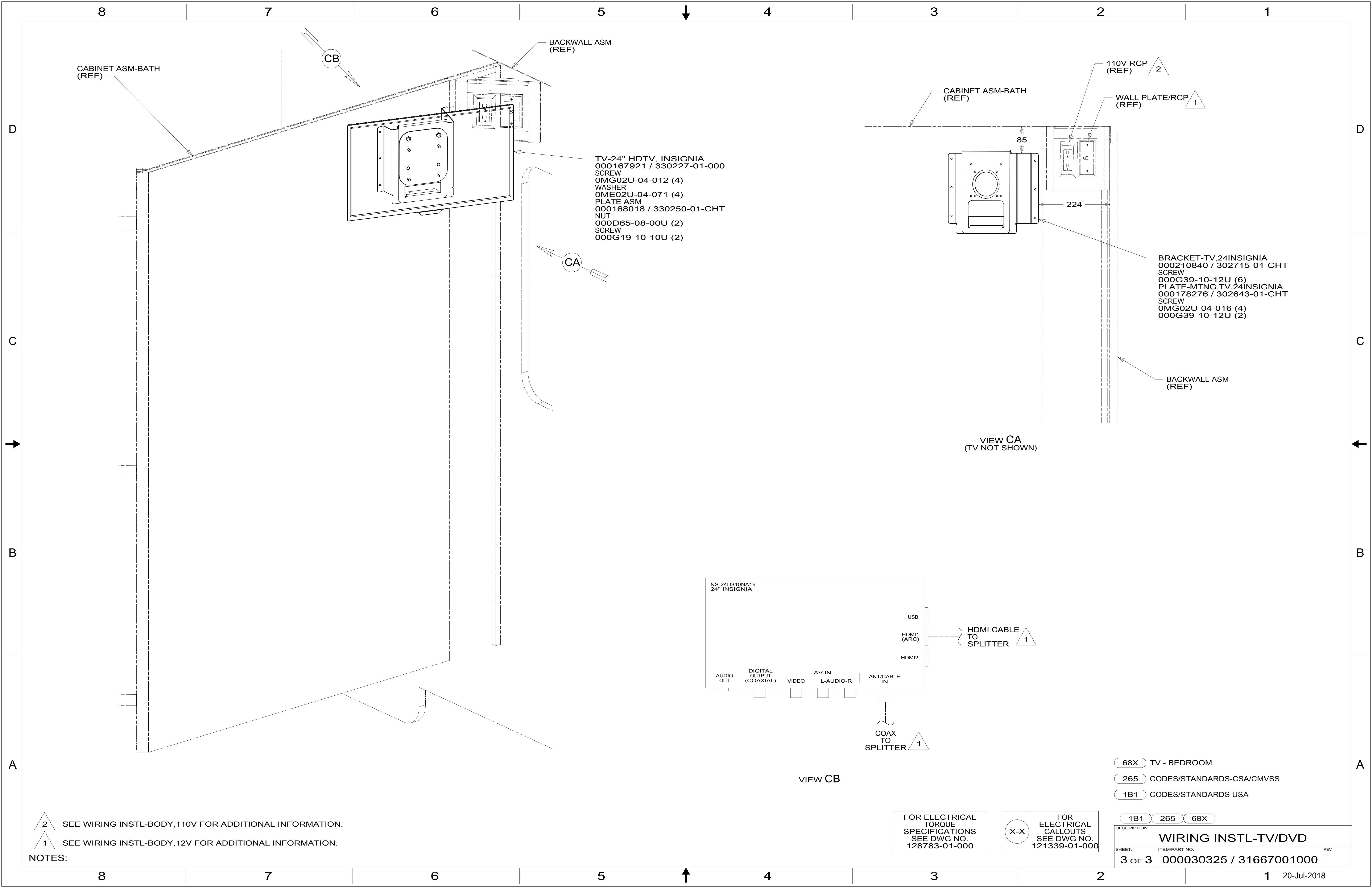
DETAIL BA

FOR ELECTRICAL TORQUE SPECIFICATIONS SEE DWG NO. 128783-01-000

FOR ELECTRICAL CALLOUTS SEE DWG NO. 121339-01-000

- 68T TV - BEDROOM WITHOUT
- 68X TV - BEDROOM
- 265 CODES/STANDARDS-CSA/CMVSS
- 1B1 CODES/STANDARDS USA

DESCRIPTION:		1B1 265	
WIRING INSTL-TV/DVD			
SHEET:	ITEM/PART NO.:	REV	
2 OF 3	000030325 / 31667001000		



CABINET ASM-BATH (REF)

CB

BACKWALL ASM (REF)

TV-24" HDTV, INSIGNIA
 000167921 / 330227-01-000
 SCREW
 OMG02U-04-012 (4)
 WASHER
 OME02U-04-071 (4)
 PLATE ASM
 000168018 / 330250-01-CHT
 NUT
 000D65-08-00U (2)
 SCREW
 000G19-10-10U (2)

CA

CABINET ASM-BATH (REF)

110V RCP (REF) 2

WALL PLATE/RCP (REF) 1

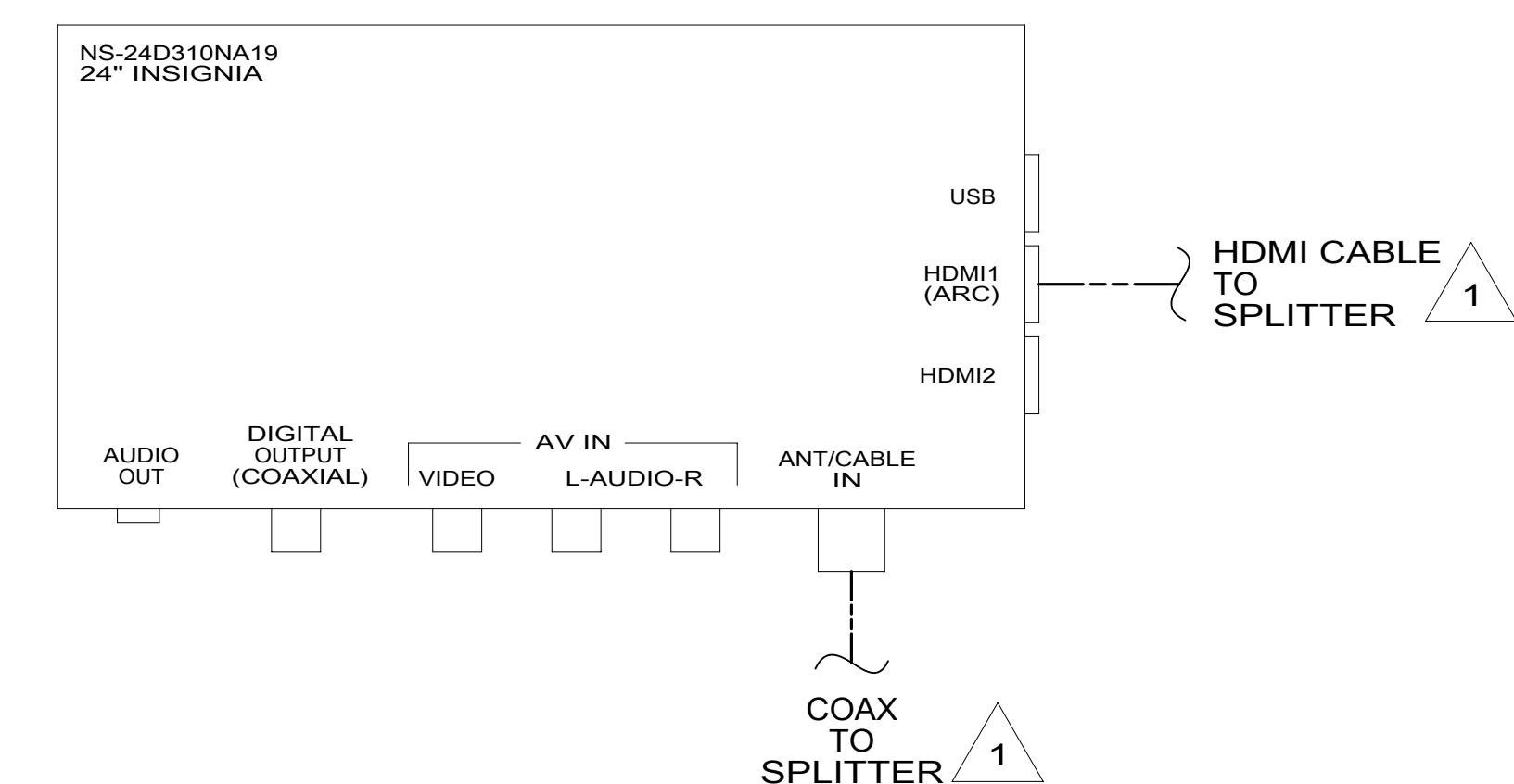
85

224

BRACKET-TV,24INSIGNIA
 000210840 / 302715-01-CHT
 SCREW
 000G39-10-12U (6)
 PLATE-MTNG,TV,24INSIGNIA
 000178276 / 302643-01-CHT
 SCREW
 OMG02U-04-016 (4)
 000G39-10-12U (2)

BACKWALL ASM (REF)

VIEW CA (TV NOT SHOWN)



VIEW CB

- 2 SEE WIRING INSTL-BODY, 110V FOR ADDITIONAL INFORMATION.
- 1 SEE WIRING INSTL-BODY, 12V FOR ADDITIONAL INFORMATION.

NOTES:

FOR ELECTRICAL TORQUE SPECIFICATIONS SEE DWG NO. 128783-01-000

FOR ELECTRICAL CALLOUTS SEE DWG NO. 121339-01-000

- 68X TV - BEDROOM
- 265 CODES/STANDARDS-CSA/CMVSS
- 1B1 CODES/STANDARDS USA

DESCRIPTION: WIRING INSTL-TV/DVD		
SHEET: 3 OF 3	ITEM/PART NO: 000030325 / 31667001000	REV