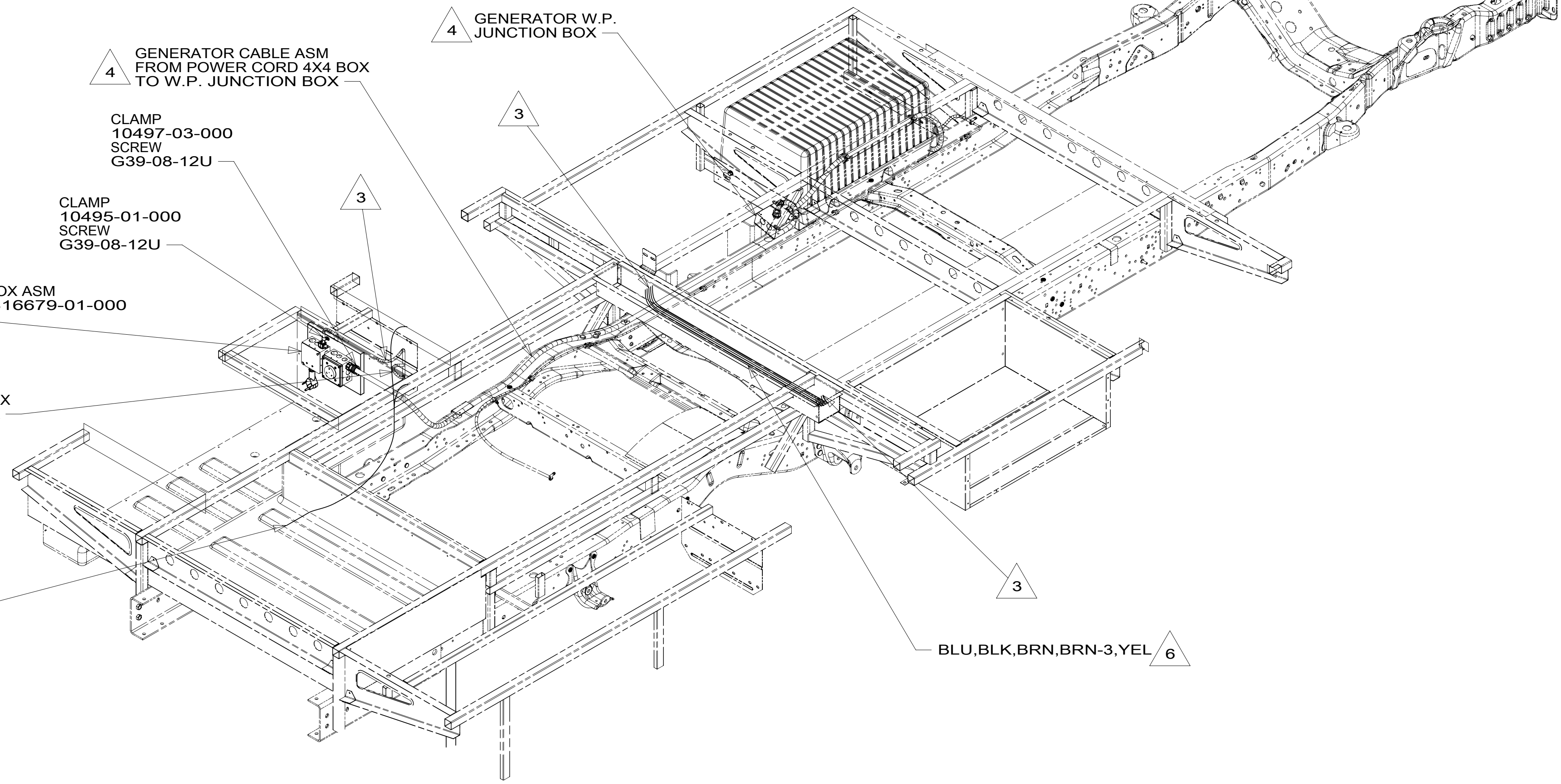


DETAIL AA



- NOTES:
- 1. AT MINIMUM ALL WIRES TO BE SUPPORTED AND SECURED PER CODE REQUIREMENTS. USE CLAMP 10495 OR 10497 OR WIRE TIE 8343 OR 108046 AND SCREW G67-XX-XXX OR G56-XX-XXX AS APPROPRIATE FOR INSTALLATION.
 - 2. ALL 110V WIRE TO BE CLAMPED WITH CLAMP 10497-05-000 WITHIN 200MM OF OUTLET BOXES, USE SCREW G67-10-12B.

- 6 WIRE ROUTED IN UNDER FLOOR TROUGH.
- 5 SEE LOAD CENTER ASM FOR ADDITIONAL INFORMATION.
- 4 SEE GENERATOR INSTL FOR ADDITIONAL INFORMATION.
- 3 ROUTE WIRE THRU FLOOR.

FOR ELECTRICAL TORQUE SPECIFICATIONS SEE DWG NO. 128783-01-000

FOR ELECTRICAL CALLOUTS SEE DWG NO. 121339-01-000

- 265 CODES/STANDARDS-CSA/CMVSS
- 1B1 CODES/STANDARDS USA
- 1B1 265

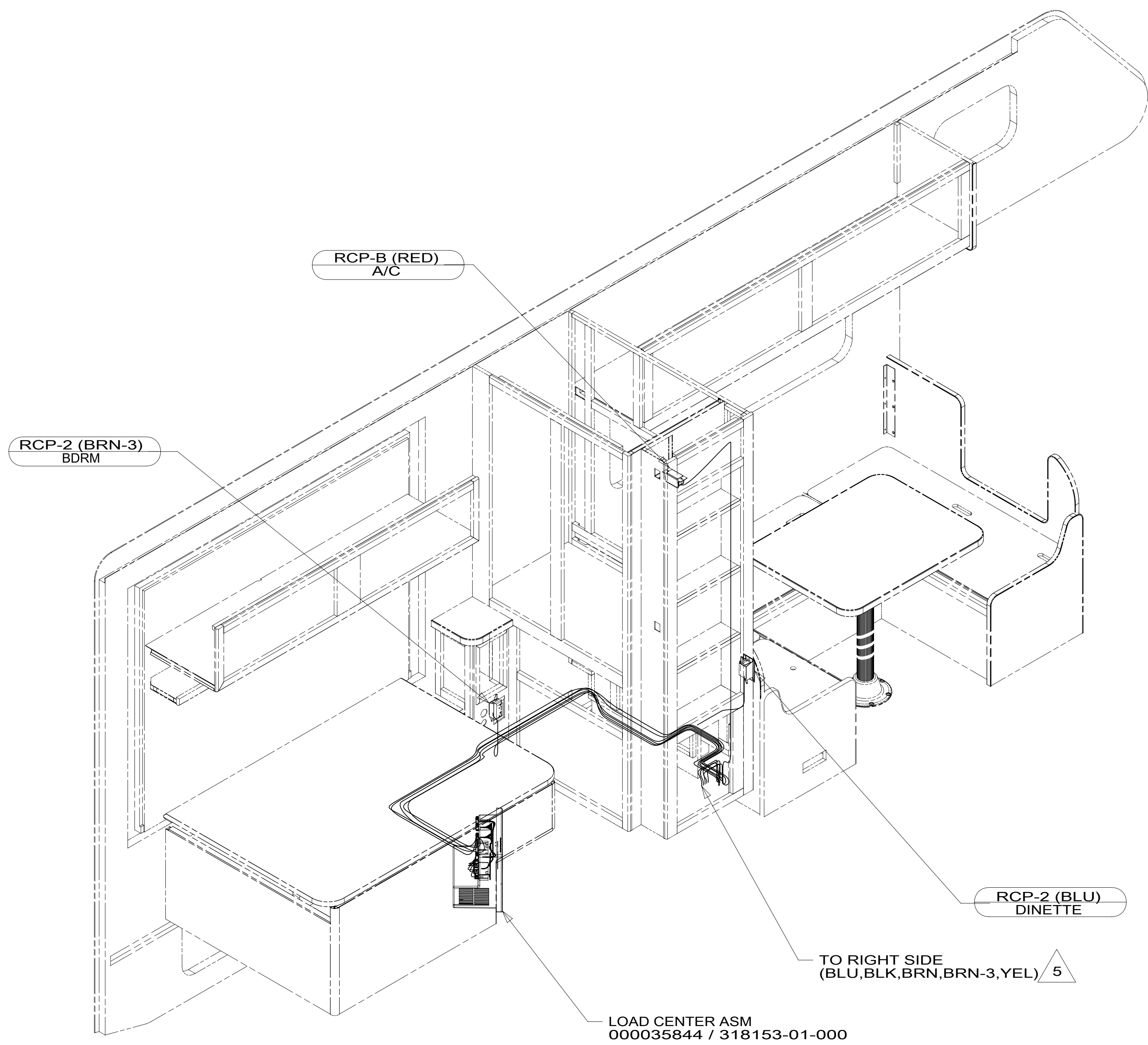


DSNR:		ALL DIMENSIONS ARE IN MILLIMETERS	
DFFR:		MATERIAL:	
UNSPECIFIED TOLERANCES:		WEIGHT: (LBS)	FIRST USED:
WHOLE DIM (X)	: 3		18 322M
ONE-PLACE (X.X)	: 1.5		
TWO-PLACE (X.XX)	: 0.50		
ANGLE	: 1°		

REFER TO ES0018 FOR FASTENER TIGHTENING GUIDELINES		
DESCRIPTION: WIRING INSTL-BODY, 110V		
SHEET: 1 OF 5	ITEM/PART NO: 000030324 / 31666901000	REV:
REF:	1	14-Jul-2017

8 7 6 5 4 3 2 1

D
C
B
A



- 5 ROUTE WIRE THRU FLOOR TO UNDERFLOOR TROUGH.
4. FOR MORE INFORMATION SEE WIRING DIAGRAM-BODY,110V.
3. ALL GROUND WIRE TO BE COVERED WITH TUBING 8041-02-000.
2. ALL 110V WIRE TO BE CLAMPED WITH CLAMP 10497-05-000 WITHIN 200MM OF OUTLET BOXES, USE SCREW G67-10-12B.
1. AT MINIMUM ALL WIRES TO BE SUPPORTED AND SECURED PER CODE REQUIREMENTS. USE CLAMP 10495 OR 10497 OR WIRE TIE 8343 OR 108046 AND SCREW G67-XX-XXX OR G56-XX-XXX AS APPROPRIATE FOR INSTALLATION.

NOTES:

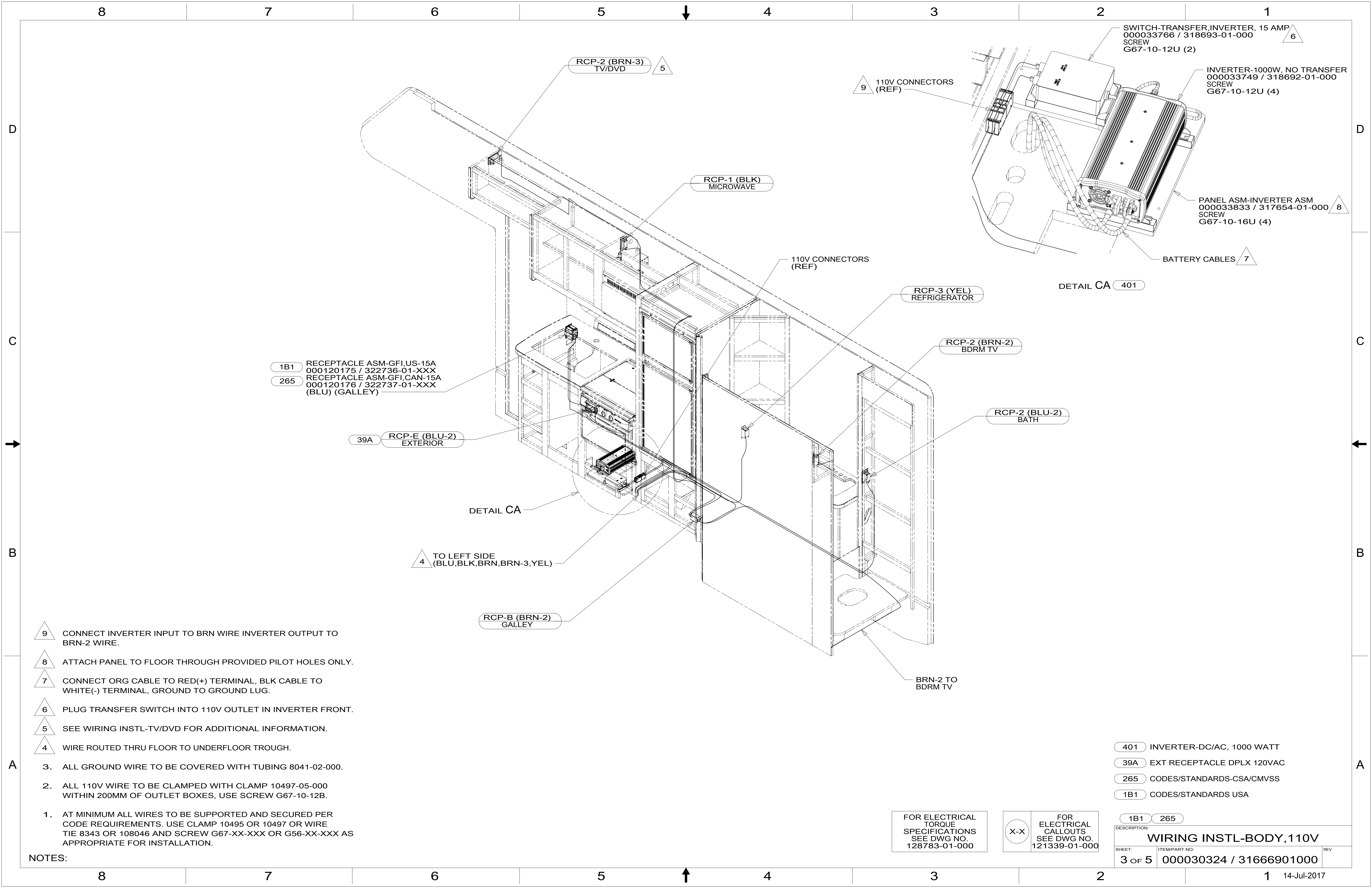
265 CODES/STANDARDS-CSA/CMVSS
 1B1 CODES/STANDARDS USA

FOR ELECTRICAL TORQUE SPECIFICATIONS SEE DWG NO. 128783-01-000

FOR ELECTRICAL CALLOUTS SEE DWG NO. 121339-01-000

DESCRIPTION:	
1B1 265	
WIRING INSTL-BODY,110V	
SHEET:	ITEM/PART NO:
2 OF 5	000030324 / 31666901000
REV	

8 7 6 5 4 3 2 1 14-Jul-2017



1B1 RECEPTACLE ASM-GFI,US-15A
000120175 / 322736-01-XXX
265 RECEPTACLE ASM-GFI,CAN-15A
000120176 / 322737-01-XXX
(BLU) (GALLEY)

39A RCP-E (BLU-2)
EXTERIOR

DETAIL CA

4 TO LEFT SIDE
(BLU,BLK,BRN,BRN-3,YEL)

RCP-B (BRN-2)
GALLEY

RCP-1 (BLK)
MICROWAVE

110V CONNECTORS
(REF)

RCP-3 (YEL)
REFRIGERATOR

RCP-2 (BRN-2)
BDRM TV

RCP-2 (BLU-2)
BATH

BRN-2 TO
BDRM TV

RCP-2 (BRN-3)
TV/DVD 5

9 110V CONNECTORS
(REF)

SWITCH-TRANSFER,INVERTER, 15 AMP
000033766 / 318693-01-000
SCREW
G67-10-12U (2) 6

INVERTER-1000W, NO TRANSFER
000033749 / 318692-01-000
SCREW
G67-10-12U (4)

PANEL ASM-INVERTER ASM
000033833 / 317654-01-000 8
SCREW
G67-10-16U (4)

BATTERY CABLES 7

DETAIL CA 401

- 9 CONNECT INVERTER INPUT TO BRN WIRE INVERTER OUTPUT TO BRN-2 WIRE.
- 8 ATTACH PANEL TO FLOOR THROUGH PROVIDED PILOT HOLES ONLY.
- 7 CONNECT ORG CABLE TO RED(+) TERMINAL, BLK CABLE TO WHITE(-) TERMINAL, GROUND TO GROUND LUG.
- 6 PLUG TRANSFER SWITCH INTO 110V OUTLET IN INVERTER FRONT.
- 5 SEE WIRING INSTL-TV/DVD FOR ADDITIONAL INFORMATION.
- 4 WIRE ROUTED THRU FLOOR TO UNDERFLOOR TROUGH.

- 3. ALL GROUND WIRE TO BE COVERED WITH TUBING 8041-02-000.
- 2. ALL 110V WIRE TO BE CLAMPED WITH CLAMP 10497-05-000 WITHIN 200MM OF OUTLET BOXES, USE SCREW G67-10-12B.
- 1. AT MINIMUM ALL WIRES TO BE SUPPORTED AND SECURED PER CODE REQUIREMENTS. USE CLAMP 10495 OR 10497 OR WIRE TIE 8343 OR 108046 AND SCREW G67-XX-XXX OR G56-XX-XXX AS APPROPRIATE FOR INSTALLATION.

NOTES:

- 401 INVERTER-DC/AC, 1000 WATT
- 39A EXT RECEPTACLE DPLX 120VAC
- 265 CODES/STANDARDS-CSA/CMVSS
- 1B1 CODES/STANDARDS USA

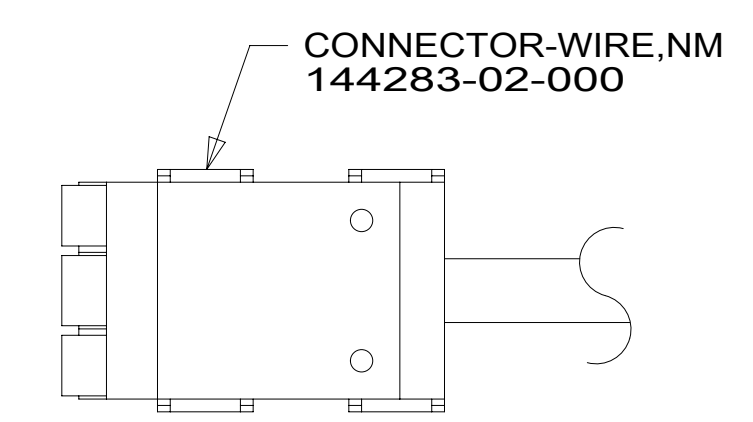
FOR ELECTRICAL
TORQUE
SPECIFICATIONS
SEE DWG NO.
128783-01-000

FOR ELECTRICAL
CALLOUTS
SEE DWG NO.
121339-01-000

DESCRIPTION:	
1B1 265	
WIRING INSTL-BODY, 110V	
SHEET:	ITEM/PART NO:
3 OF 5	000030324 / 31666901000
REV	

8 7 6 5 4 3 2 1

RED	1B1	136135-07-061	
	265	136136-07-061	
YEL	1B1	136131-05-071	
	265	136134-05-071	
BLK	1B1	136135-06-089	
	265	136136-06-089	
BRN	1B1	136131-03-058	4
	265	136134-03-058	4
BLU	1B1	136131-02-082	
	265	136134-02-082	
MAIN	1B1	136137-01-015	5
	265	136138-01-015	5
GROUND MAIN		136145-06-016	
GENERATOR CABLE ASM	1B1	164957-15-033	6
	265	164957-16-033	6
BLU-2	1B1	136131-24-056	
	265	136134-24-056	
BRN-2	1B1	136131-19-060	4
	265	136134-19-060	4
BRN-3	1B1	136131-22-110	
	265	136134-22-110	



DETAIL DA

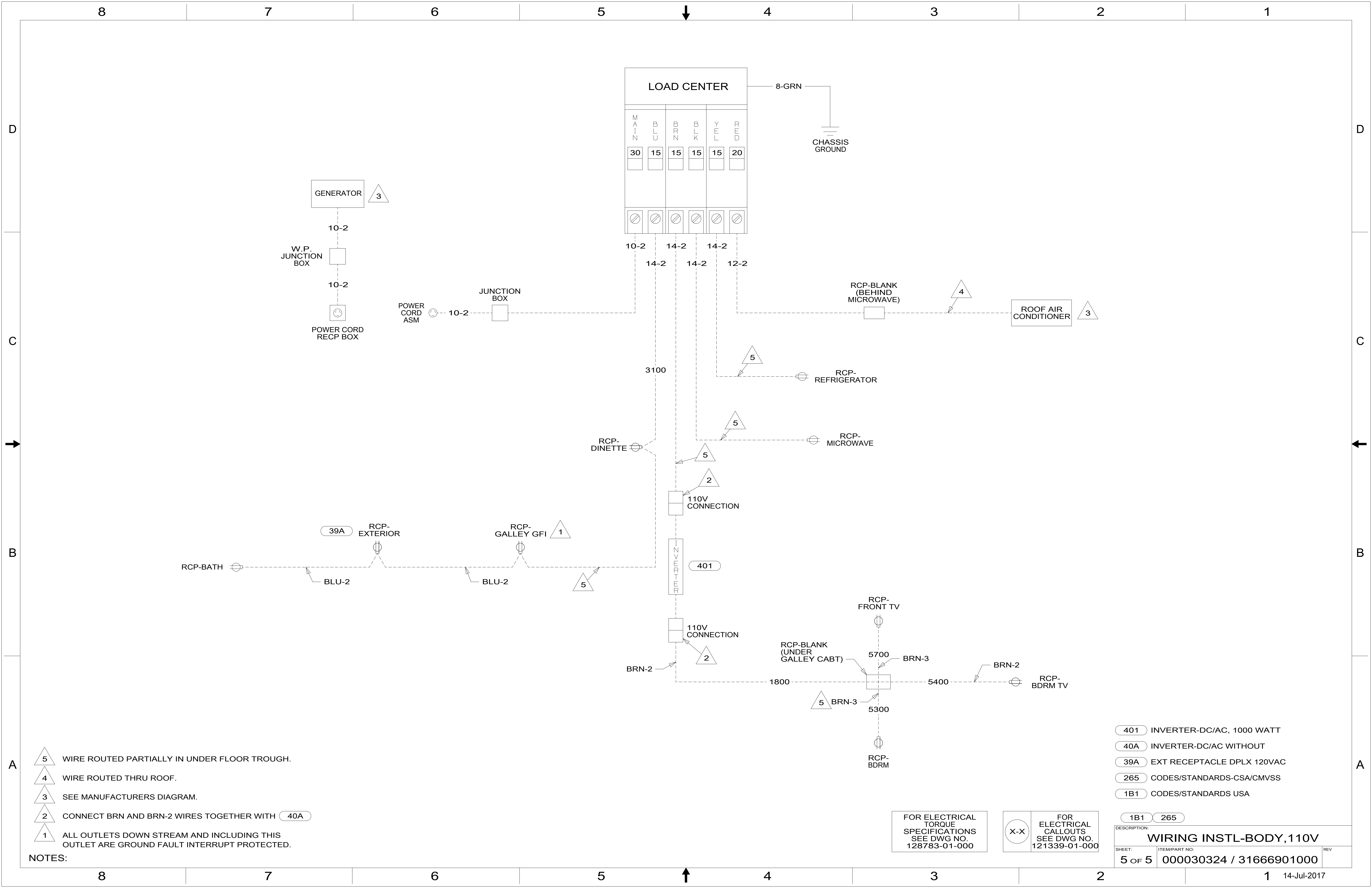
- NOTES:
- 1. ALL GROUND WIRES TO BE COVERED WITH TUBING 8041-02-000.
 - 2. SECURE WIRES TO BACKSIDE OF LOAD CENTER WITH WIRE TIE 116673-01-000.
 - 3. SEE WIRING INSTL-BODY, 12V FOR ADDITIONAL INFORMATION.
- 6 WIRE PREP TO INSTALL ON POWER CORD BOX ASM. GENERATOR END WILL BE INSTALLED ON LINE
5 WIRE PREP TO INSTALL ON POWER CORD BOX ASM. LOAD CENTER END WILL BE INSTALLED ON LINE.
4 SEE DETAIL DA FOR CONNECTOR INSTALLATION.

265 CODES/STANDARDS-CSA/CMVSS
1B1 CODES/STANDARDS USA

FOR ELECTRICAL TORQUE SPECIFICATIONS SEE DWG NO. 128783-01-000

FOR ELECTRICAL CALLOUTS SEE DWG NO. 121339-01-000

1B1 265
 DESCRIPTION:
WIRING INSTL-BODY, 110V
 SHEET: 4 OF 5 ITEM/PART NO: 000030324 / 31666901000 REV



- NOTES:
- 5 WIRE ROUTED PARTIALLY IN UNDER FLOOR TROUGH.
 - 4 WIRE ROUTED THRU ROOF.
 - 3 SEE MANUFACTURERS DIAGRAM.
 - 2 CONNECT BRN AND BRN-2 WIRES TOGETHER WITH 40A
 - 1 ALL OUTLETS DOWN STREAM AND INCLUDING THIS OUTLET ARE GROUND FAULT INTERRUPT PROTECTED.

- 401 INVERTER-DC/AC, 1000 WATT
- 40A INVERTER-DC/AC WITHOUT
- 39A EXT RECEPTACLE DPLX 120VAC
- 265 CODES/STANDARDS-CSA/CMVSS
- 1B1 CODES/STANDARDS USA

FOR ELECTRICAL TORQUE SPECIFICATIONS SEE DWG NO. 128783-01-000

FOR ELECTRICAL CALLOUTS SEE DWG NO. 121339-01-000

DESCRIPTION:	
WIRING INSTL-BODY, 110V	
SHEET: 5 OF 5	ITEM/PART NO: 000030324 / 31666901000
REV	14-Jul-2017