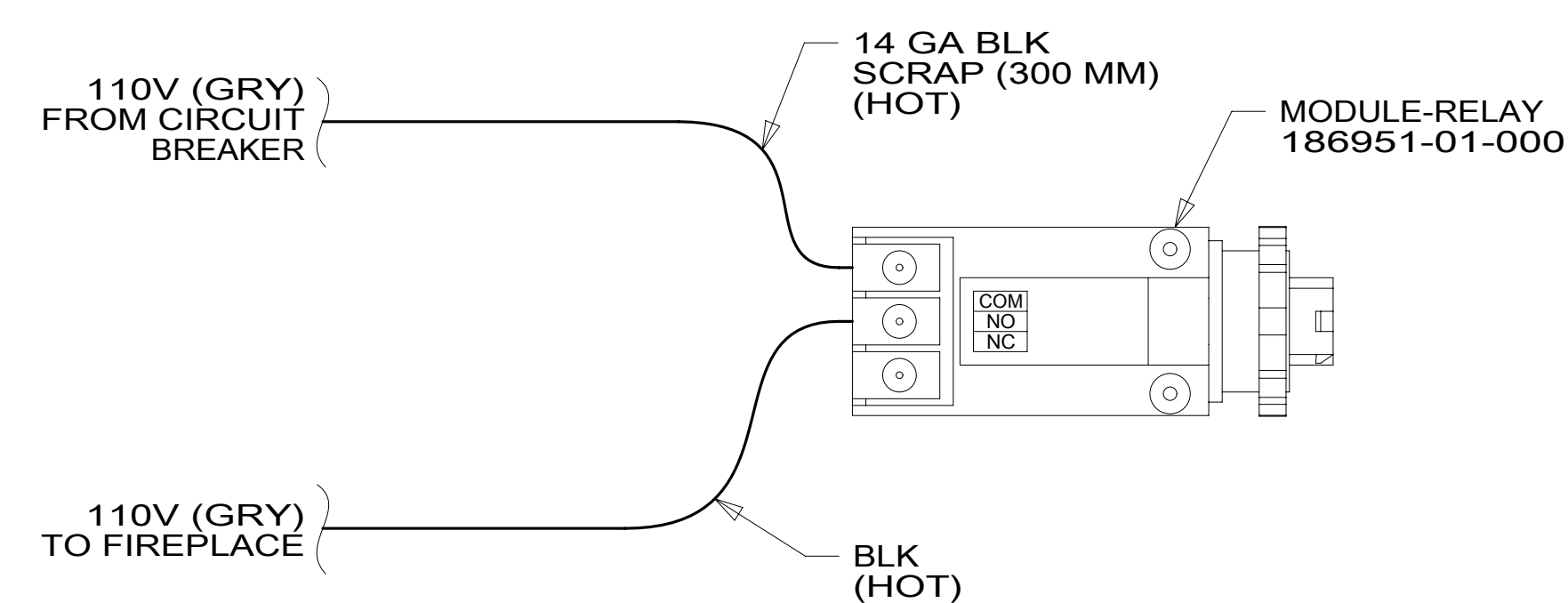


DETAIL AA



DETAIL AB

- 215 DISHWASHER WITHOUT
- 214 DISHWASHER DRAWER STYLE
- 265 CODES/STANDARDS-CSA/CMVSS
- 1B1 CODES/STANDARDS USA



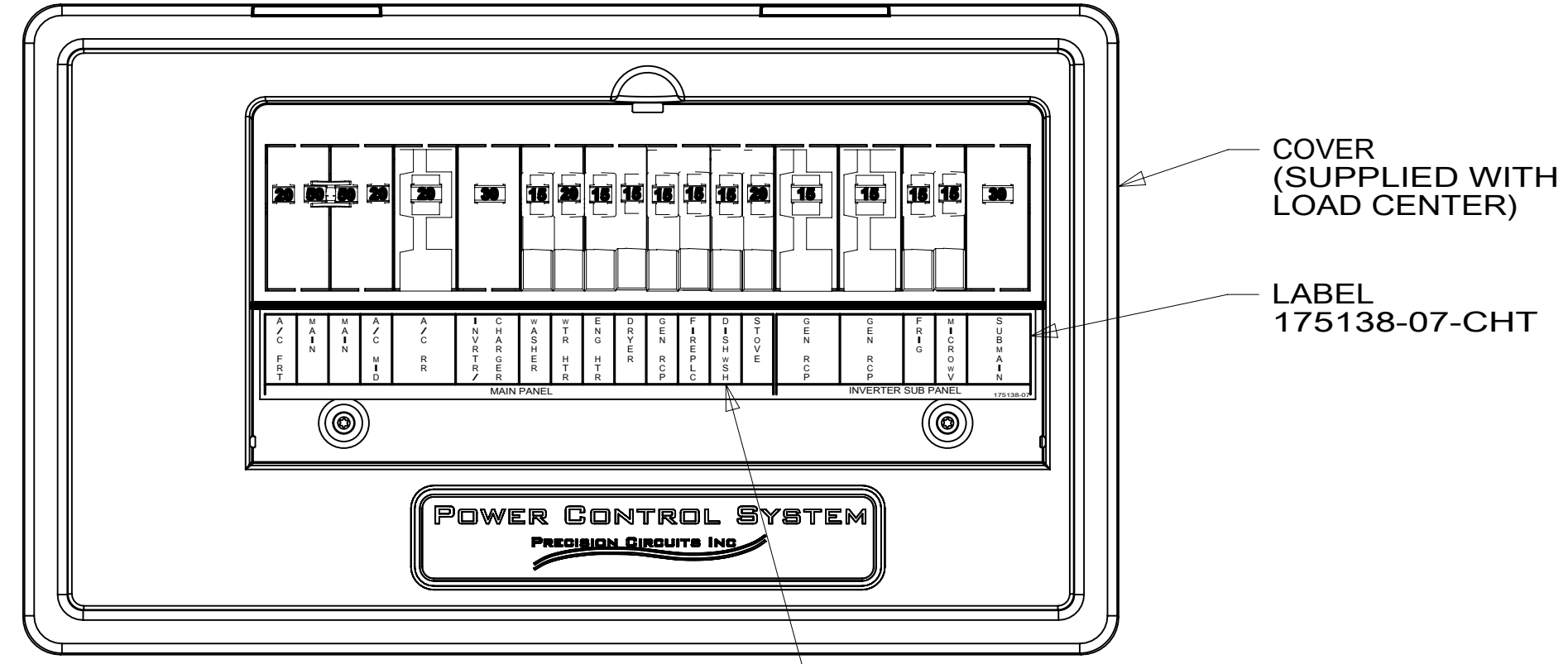
DSNR:	ALL DIMENSIONS ARE IN MILLIMETERS	
DFFR:		
UNSPECIFIED TOLERANCES:		MATERIAL:
WHOLE DIM (X) :	3	
ONE-PLACE (X.X) :	1.5	
TWO-PLACE (X.XX) :	0.50	
ANGLE :	1°	
REFER TO ES0018 FOR FASTENER TIGHTENING GUIDELINES	WEIGHT: (LBS)	FIRST USED:
		18 P40A

DESCRIPTION: LOAD CENTER/ATS ASM		
SHEET: 1 OF 2	ITEM/PART NO: 000026421 / 31563901000	REV:
REF: 1		12-Dec-2017

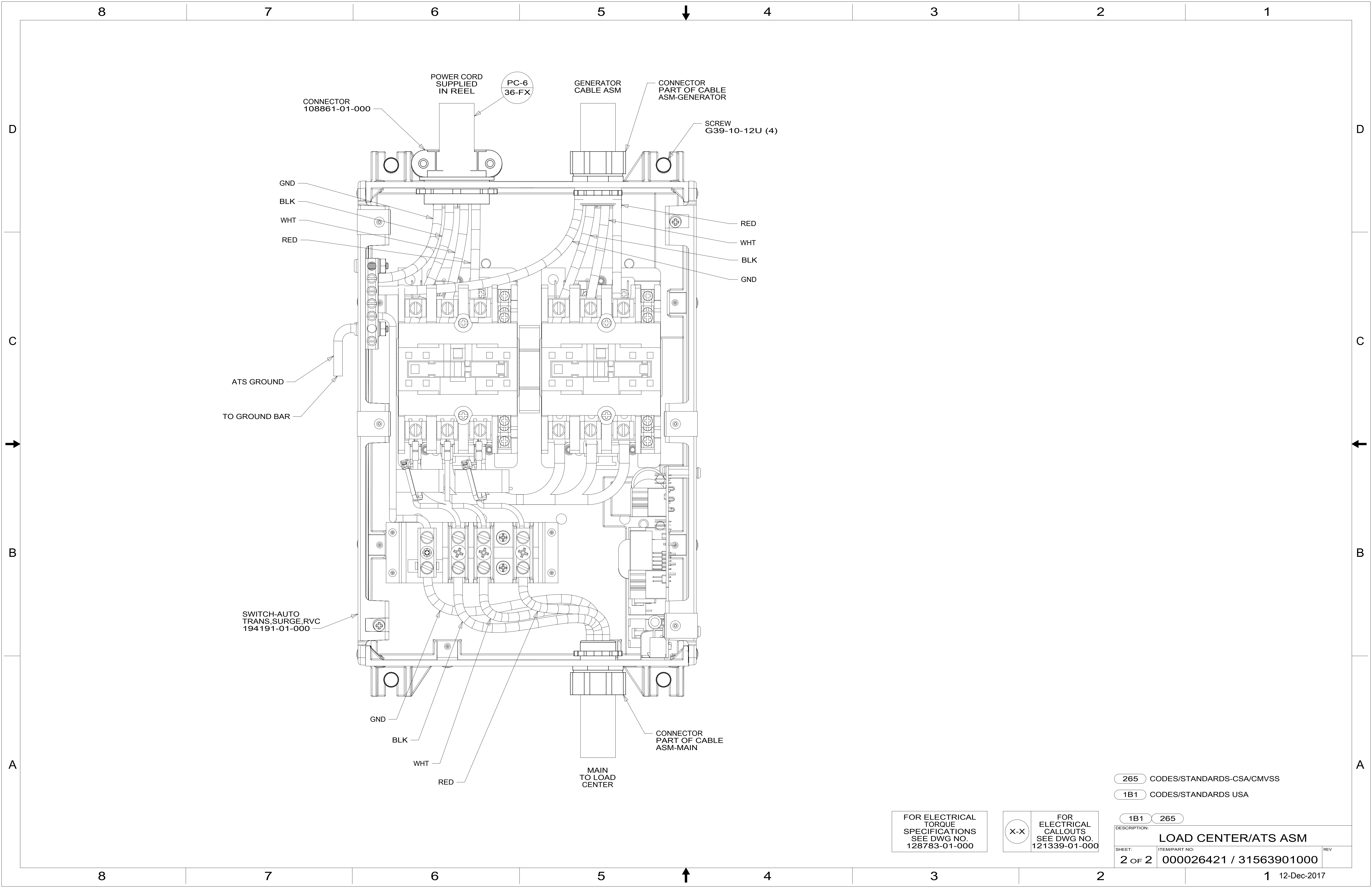
- NOTES:
- 3 BLACKEN OUT DISHWASHER WITH BLACK MARKER WITH FEATURE 215.
 2. REMOVE 400MM FROM OUTER JACKET ON ALL WIRES ENTERING LOAD CENTER AND TRIM INDIVIDUAL CONDUCTORS AS REQUIRED TO MAKE INTERNAL CONNECTIONS
 1. ALL GROUND WIRES TO BE COVERED WITH TUBING 8041-02-000.

FOR ELECTRICAL TORQUE SPECIFICATIONS SEE DWG NO. 128783-01-000

FOR ELECTRICAL CALLOUTS SEE DWG NO. 121339-01-000



3



CONNECTOR 108861-01-000

POWER CORD SUPPLIED IN REEL

PC-6 36-FX

GENERATOR CABLE ASM

CONNECTOR PART OF CABLE ASM-GENERATOR

SCREW G39-10-12U (4)

GND

BLK

WHT

RED

RED

WHT

BLK

GND

ATS GROUND

TO GROUND BAR

SWITCH-AUTO TRANS,SURGE,RVC 194191-01-000

GND

BLK

WHT

RED

MAIN TO LOAD CENTER

CONNECTION PART OF CABLE ASM-MAIN

265 CODES/STANDARDS-CSA/CMVSS

1B1 CODES/STANDARDS USA

FOR ELECTRICAL TORQUE SPECIFICATIONS SEE DWG NO. 128783-01-000

FOR ELECTRICAL CALLOUTS SEE DWG NO. 121339-01-000

DESCRIPTION:		1B1	265
LOAD CENTER/ATS ASM			
SHEET:	ITEM/PART NO.:	REV	
2 OF 2	000026421 / 31563901000		