

- 7 CONNECT 2-12 PIN HSGS TO EACH OTHER WITHOUT 57P
- 6 CUT VISOR WIRING TO 300 MM BEFORE CONNECTING.
- 5 WIRE TIE SAT RECEIVER TO RADIO WIRING.
- 4 USE TAPE 8363-03-000 TO SECURE WIRES IN A-POST.
- 3 APPLY FOAM TAPE TO BOTTOM OF FAN TO SEAL FAN TO PANEL.

- 2. USE SEAL-TRIM 093305-01-CHT TO PROTECT WIRES FROM SHARP EDGES.
- 1. SEE WIRING INSTL-CHASSIS FOR ADDITIONAL INFORMATION.

NOTES:

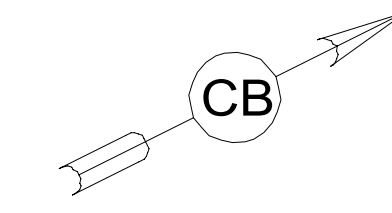
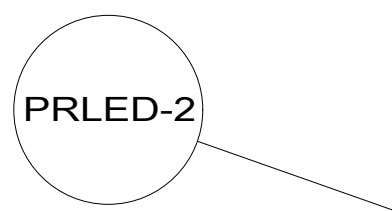
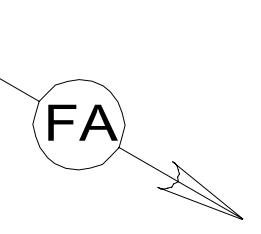
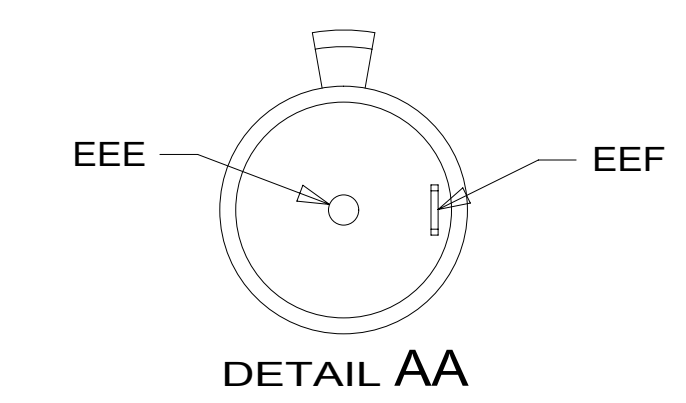
- 157 INFOTAIN CTR/GPS SIRIUSXM
- 38M TIRE MONITORING SYSTEM
- 571 RADIO SPEAKERS
- 57P RADIO SPEAKERS-PREMIUM SOUND
- 265 CODES/STANDARDS-CSA/CMVSS
- 1B1 CODES/STANDARDS USA

WINNEBAGO
COPYRIGHT 2016 WINNEBAGO INDUSTRIES, INC.

DSNR:		ALL DIMENSIONS ARE IN MILLIMETERS	
DFFR:			
UNSPECIFIED TOLERANCES:		MATERIAL:	
WHOLE DIM (X)	: 3		
ONE-PLACE (X.X)	: 1.5		
TWO-PLACE (X.XX)	: 0.50		
ANGLE	: 1°		
REFER TO ES0018 FOR FASTENER TIGHTENING GUIDELINES		WEIGHT: (LBS)	FIRST USED:
			18 P-SER
DESCRIPTION:			
WIRING INSTL-FRONT END			
SHEET:	ITEM/PART NO.:	REV:	
1 OF 8	000026348 / 31559701000		
REF:			

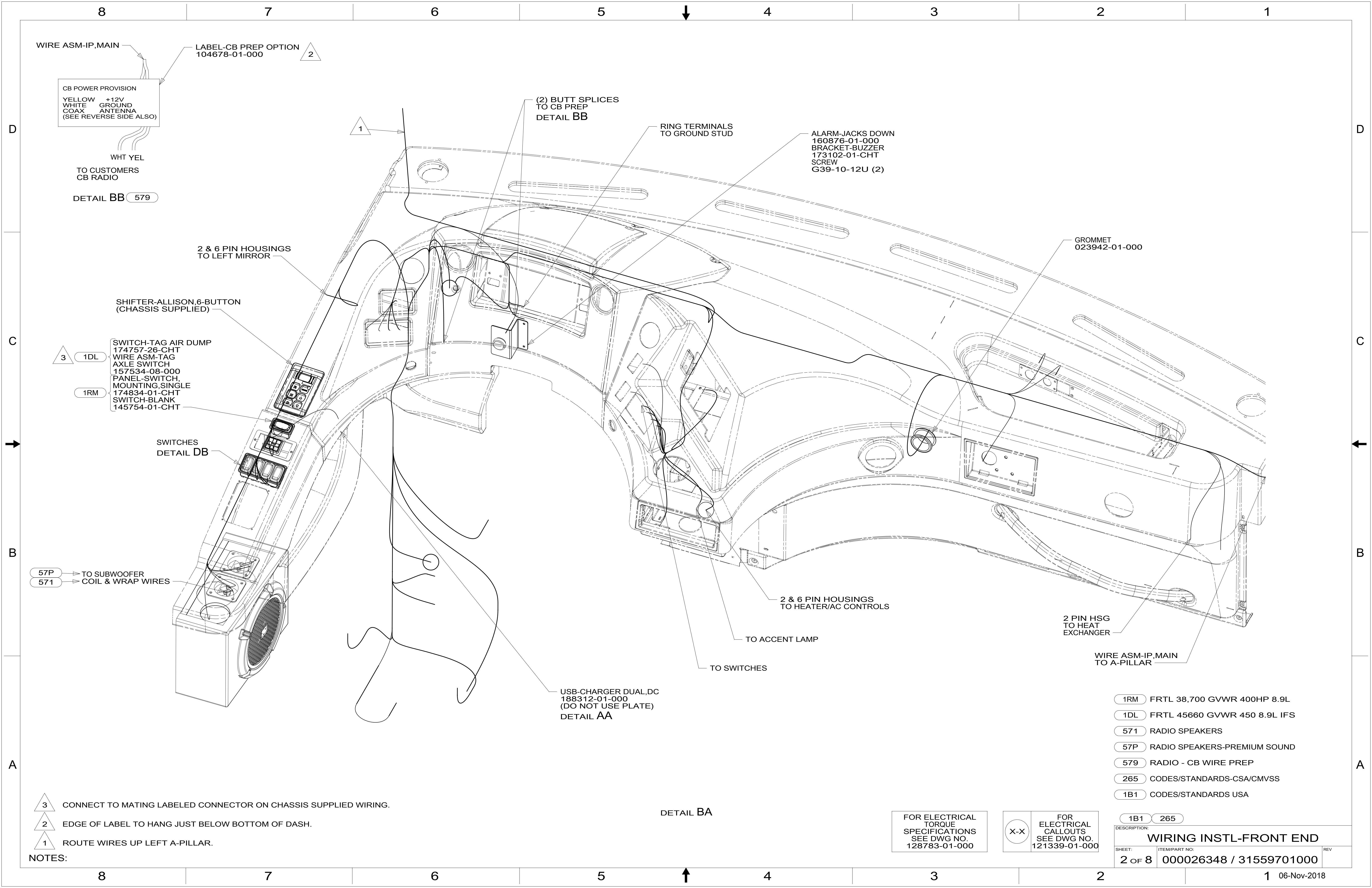
FOR ELECTRICAL TORQUE SPECIFICATIONS SEE DWG NO. 128783-01-000

FOR ELECTRICAL CALLOUTS SEE DWG NO. 121339-01-000



57P

7
57P



WIRE ASM-IP,MAIN
 LABEL-CB PREP OPTION
 104678-01-000

CB POWER PROVISION
 YELLOW +12V
 WHITE GROUND
 COAX ANTENNA
 (SEE REVERSE SIDE ALSO)

WHT YEL
 TO CUSTOMERS
 CB RADIO

DETAIL BB 579

2

(2) BUTT SPLICES
 TO CB PREP
 DETAIL BB

RING TERMINALS
 TO GROUND STUD

ALARM-JACKS DOWN
 160876-01-000
 BRACKET-BUZZER
 173102-01-CHT
 SCREW
 G39-10-12U (2)

GROMMET
 023942-01-000

2 & 6 PIN HOUSINGS
 TO LEFT MIRROR

SHIFTER-ALLISON 6-BUTTON
 (CHASSIS SUPPLIED)

3 1DL
 SWITCH-TAG AIR DUMP
 174757-26-CHT
 WIRE ASM-TAG
 AXLE SWITCH
 157534-08-000
 1RM
 PANEL-SWITCH,
 MOUNTING,SINGLE
 174834-01-CHT
 SWITCH-BLANK
 145754-01-CHT

SWITCHES
 DETAIL DB

57P TO SUBWOOFER
 571 COIL & WRAP WIRES

2 & 6 PIN HOUSINGS
 TO HEATER/AC CONTROLS

TO ACCENT LAMP

TO SWITCHES

2 PIN HSG
 TO HEAT
 EXCHANGER

WIRE ASM-IP,MAIN
 TO A-PILLAR

USB-CHARGER DUAL,DC
 188312-01-000
 (DO NOT USE PLATE)
 DETAIL AA

- 1RM FRTL 38,700 GVWR 400HP 8.9L
- 1DL FRTL 45660 GVWR 450 8.9L IFS
- 571 RADIO SPEAKERS
- 57P RADIO SPEAKERS-PREMIUM SOUND
- 579 RADIO - CB WIRE PREP
- 265 CODES/STANDARDS-CSA/CMVSS
- 1B1 CODES/STANDARDS USA

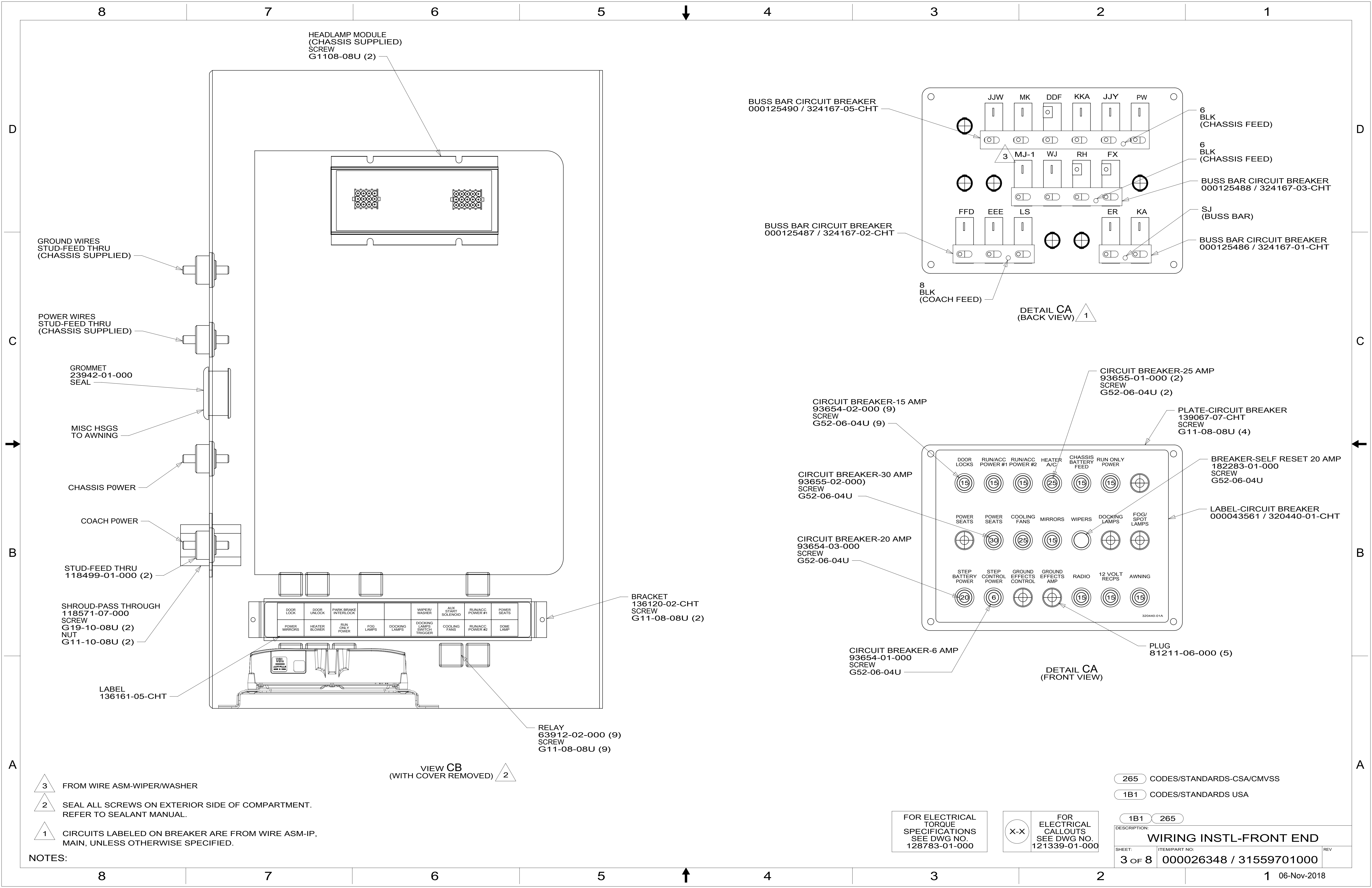
- NOTES:
- 3 CONNECT TO MATING LABELED CONNECTOR ON CHASSIS SUPPLIED WIRING.
 - 2 EDGE OF LABEL TO HANG JUST BELOW BOTTOM OF DASH.
 - 1 ROUTE WIRES UP LEFT A-PILLAR.

DETAIL BA

FOR ELECTRICAL
 TORQUE
 SPECIFICATIONS
 SEE DWG NO.
 128783-01-000

FOR ELECTRICAL
 CALLOUTS
 SEE DWG NO.
 121339-01-000

DESCRIPTION:	1B1 265	
WIRING INSTL-FRONT END		
SHEET:	ITEM/PART NO:	REV
2 OF 8	000026348 / 31559701000	



HEADLAMP MODULE
(CHASSIS SUPPLIED)
SCREW
G1108-08U (2)

GROUND WIRES
STUD-FEED THRU
(CHASSIS SUPPLIED)

POWER WIRES
STUD-FEED THRU
(CHASSIS SUPPLIED)

GROMMET
23942-01-000
SEAL

MISC HSGS
TO AWNING

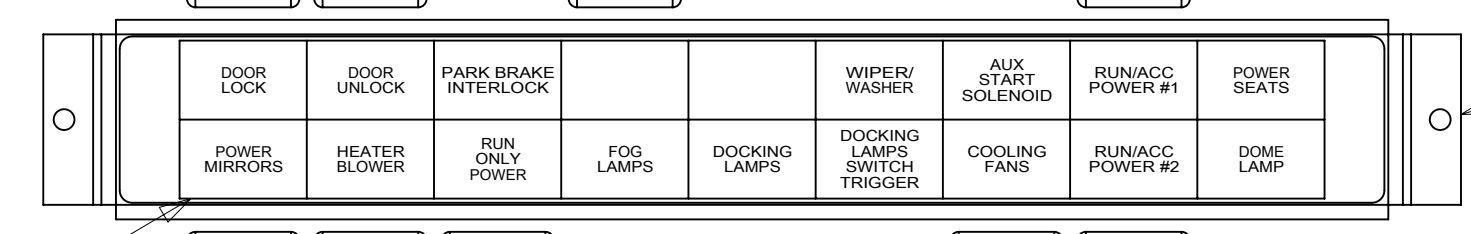
CHASSIS POWER

COACH POWER

STUD-FEED THRU
118499-01-000 (2)

SHROUD-PASS THROUGH
118571-07-000
SCREW
G19-10-08U (2)
NUT
G11-10-08U (2)

LABEL
136161-05-CHT

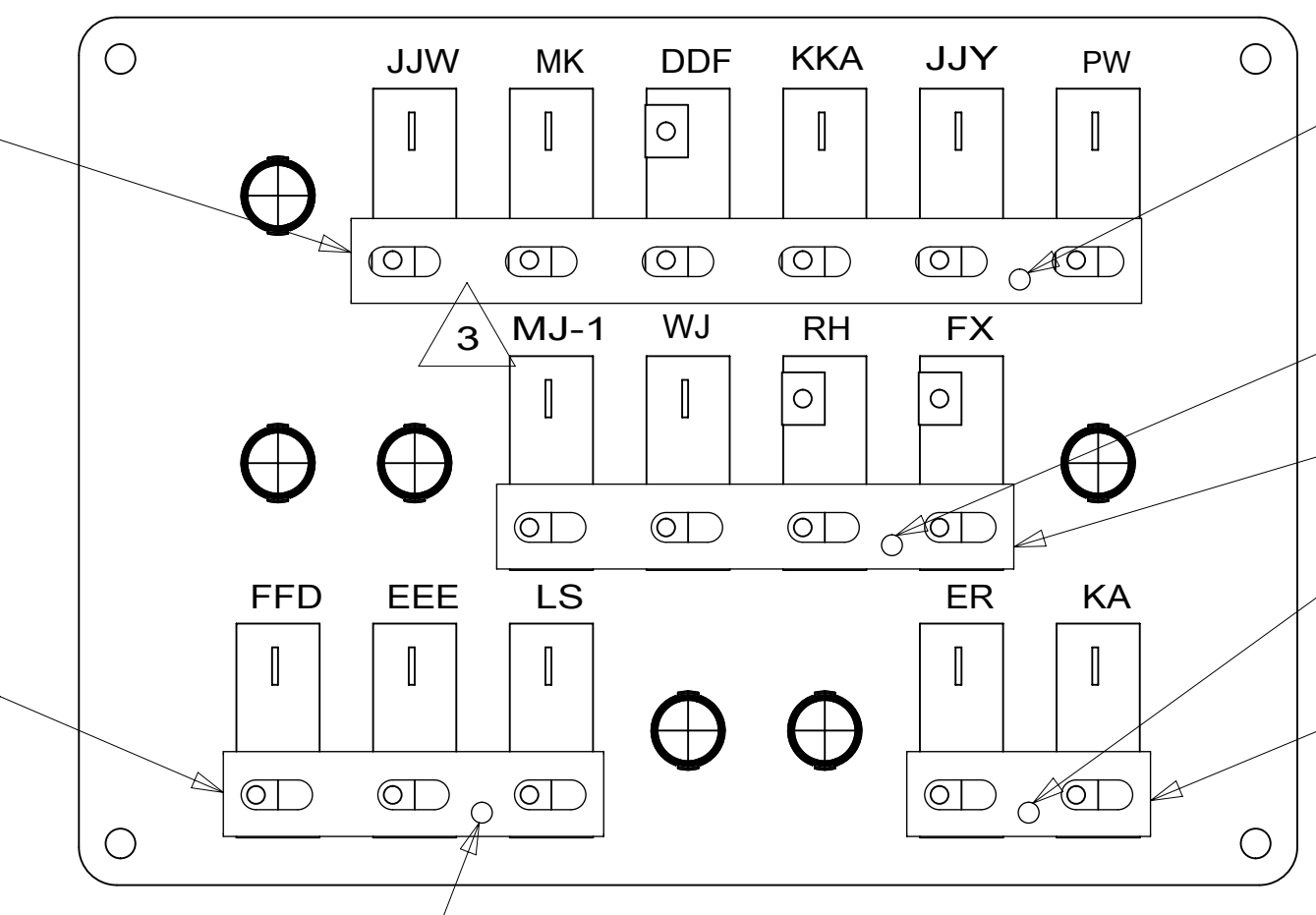


RELAY
63912-02-000 (9)
SCREW
G11-08-08U (9)

VIEW CB
(WITH COVER REMOVED) 2

BUSS BAR CIRCUIT BREAKER
000125490 / 324167-05-CHT

BUSS BAR CIRCUIT BREAKER
000125487 / 324167-02-CHT



6 BLK
(CHASSIS FEED)

6 BLK
(CHASSIS FEED)

BUSS BAR CIRCUIT BREAKER
000125488 / 324167-03-CHT

SJ
(BUSS BAR)

BUSS BAR CIRCUIT BREAKER
000125486 / 324167-01-CHT

8 BLK
(COACH FEED)

DETAIL CA
(BACK VIEW) 1

CIRCUIT BREAKER-15 AMP
93654-02-000 (9)
SCREW
G52-06-04U (9)

CIRCUIT BREAKER-30 AMP
93655-02-000 (9)
SCREW
G52-06-04U (9)

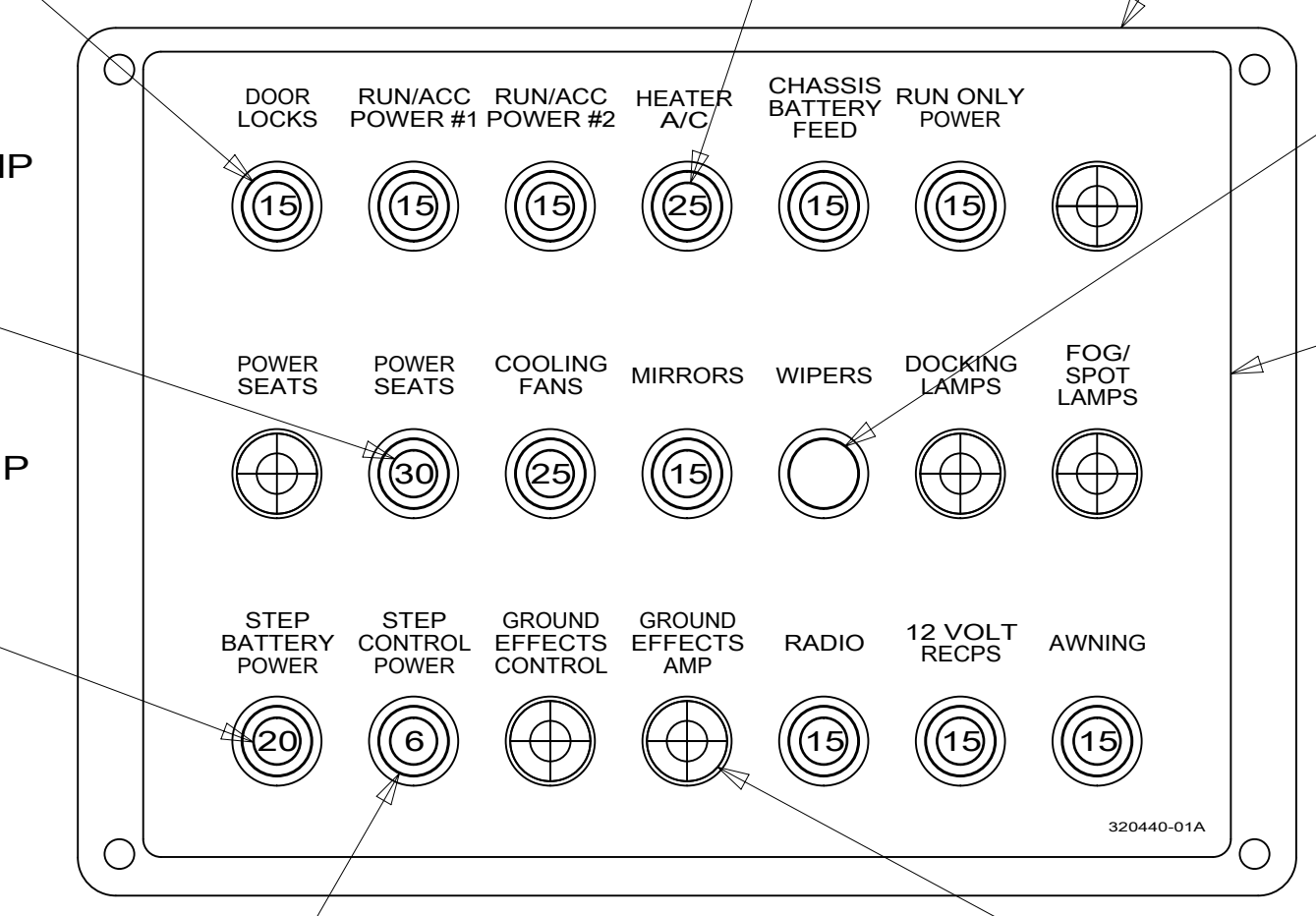
CIRCUIT BREAKER-20 AMP
93654-03-000 (9)
SCREW
G52-06-04U (9)

CIRCUIT BREAKER-25 AMP
93655-01-000 (2)
SCREW
G52-06-04U (2)

PLATE-CIRCUIT BREAKER
139067-07-CHT
SCREW
G11-08-08U (4)

BREAKER-SELF RESET 20 AMP
182283-01-000
SCREW
G52-06-04U

LABEL-CIRCUIT BREAKER
000043561 / 320440-01-CHT



CIRCUIT BREAKER-6 AMP
93654-01-000
SCREW
G52-06-04U

PLUG
81211-06-000 (5)

DETAIL CA
(FRONT VIEW)

- NOTES:
- 3 FROM WIRE ASM-WIPER/WASHER
 - 2 SEAL ALL SCREWS ON EXTERIOR SIDE OF COMPARTMENT. REFER TO SEALANT MANUAL.
 - 1 CIRCUITS LABELED ON BREAKER ARE FROM WIRE ASM-IP, MAIN, UNLESS OTHERWISE SPECIFIED.

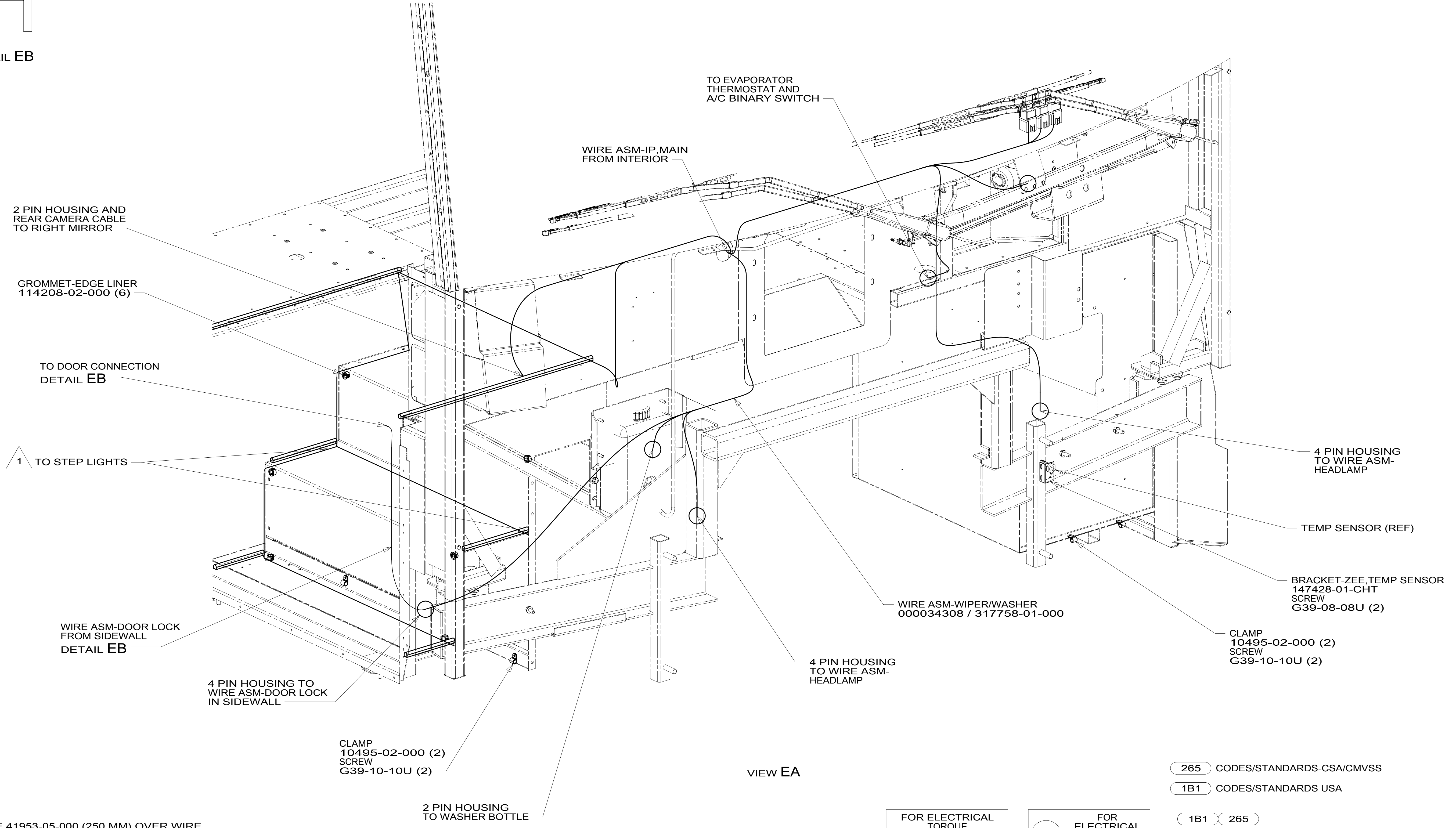
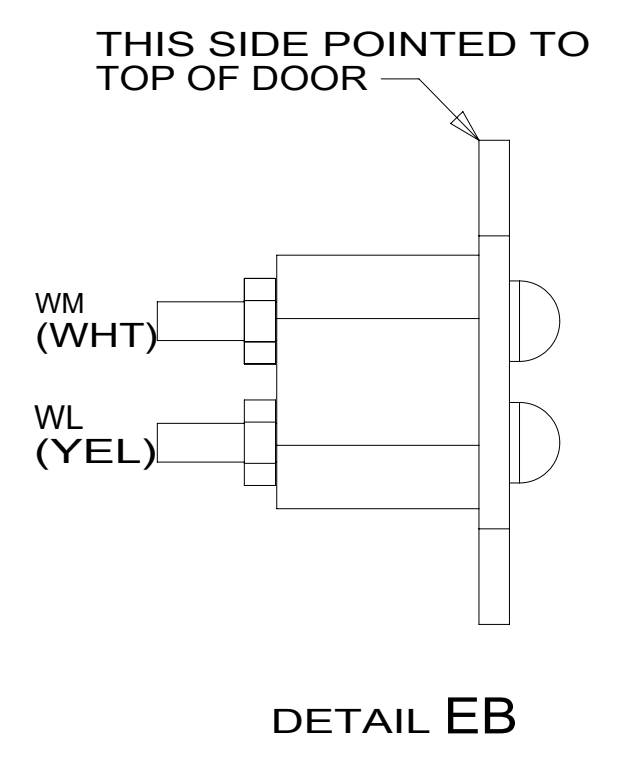
FOR ELECTRICAL TORQUE SPECIFICATIONS SEE DWG NO. 128783-01-000

FOR ELECTRICAL CALLOUTS SEE DWG NO. 121339-01-000

- 265 CODES/STANDARDS-CSA/CMVSS
- 1B1 CODES/STANDARDS USA

DESCRIPTION: WIRING INSTL-FRONT END		
SHEET: 3 OF 8	ITEM/PART NO: 000026348 / 31559701000	REV
06-Nov-2018		

8 7 6 5 4 3 2 1



1 APPLY CONDUIT-CONVOLUTE 41953-05-000 (250 MM) OVER WIRE AT END OF THE LIGHT STRIP. SECURE BOTH ENDS OF CONDUIT TO WIRE WITH TAPE 8363-01-000.

NOTES:

FOR ELECTRICAL TORQUE SPECIFICATIONS SEE DWG NO. 128783-01-000

FOR ELECTRICAL CALLOUTS SEE DWG NO. 121339-01-000

265 CODES/STANDARDS-CSA/CMVSS
1B1 CODES/STANDARDS USA

DESCRIPTION:		1B1 265
WIRING INSTL-FRONT END		
SHEET:	ITEM/PART NO.:	REV
5 OF 8	000026348 / 31559701000	

8 7 6 5 4 3 2 1 06-Nov-2018

8 7 6 5 4 3 2 1

D

D

C

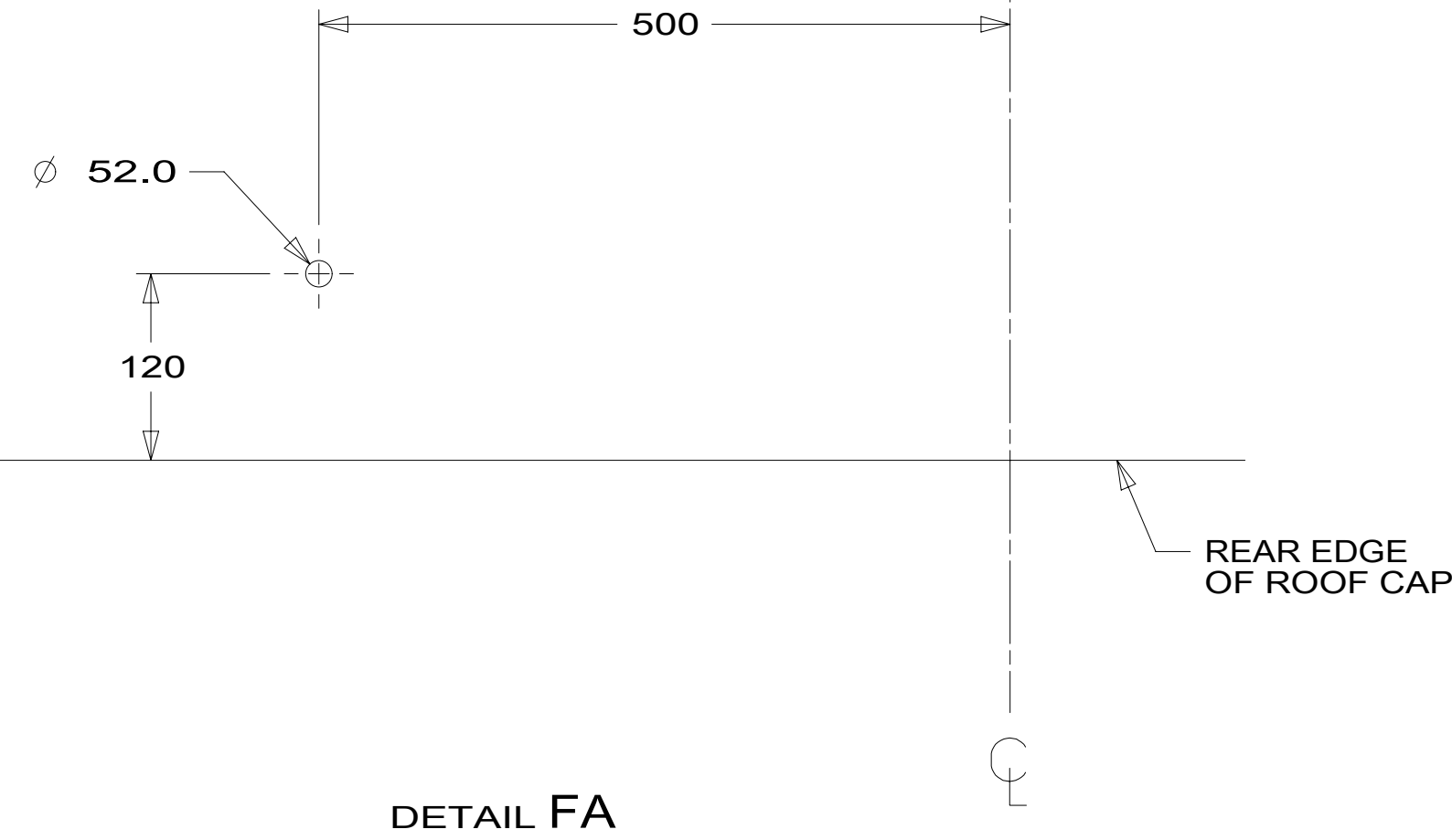
C

B

B

A

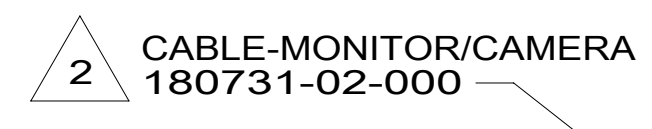
A



DETAIL FA



CABLE SUPPLIED WITH ANTENNA (ROUTE DOWN LEFT A-PILLAR TO RECEIVER SATELLITE)



TO REAR CAMERA



RADIO/MONITOR
DETAIL HA

- NOTES:
- 4 ROUTE CABLE TO EXTERIOR THRU HOLE IN PANEL ALONG WITH HEATER WIRING TO CAMERA. CAMERA IS IN MIRROR.
 - 3 SEAL AROUND ANTENNA BASE.
 - 2 RUN CABLE THRU LEFT HAND COVE TO FRONT OF UNIT AND DOWN LEFT A-PILLAR TO MONITOR.
 - 1 MOUNT ANTENNA SUCH THAT BASE IS SQUARE W/REAR OF ROOF CAP & HOLE IS DIRECTLY OVER HOLE IN FIBERGLASS. SEAL HOLE IN ROOF CAP, BASE AT SCREWS.

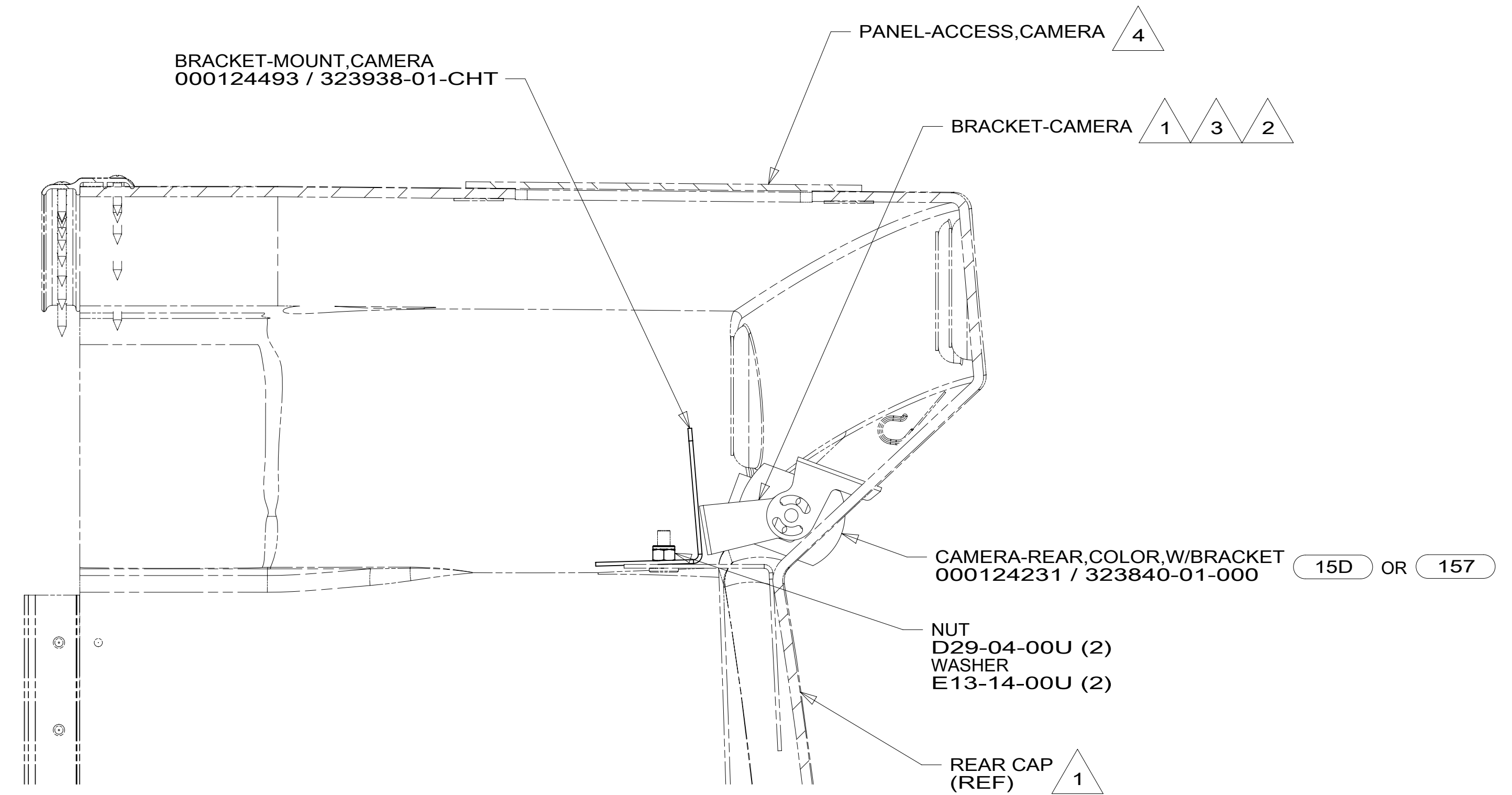
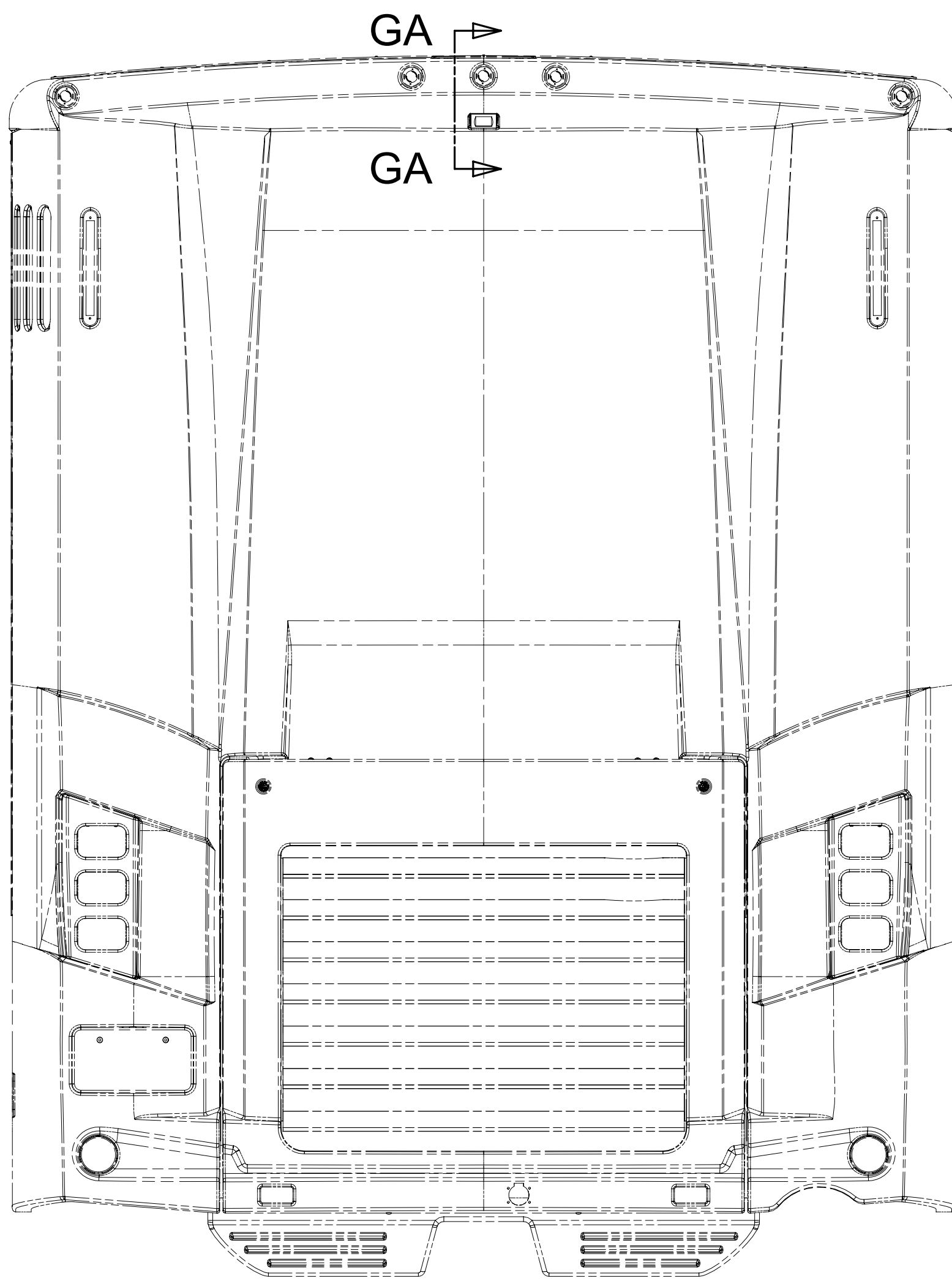
265 CODES/STANDARDS-CSA/CMVSS
1B1 CODES/STANDARDS USA

FOR ELECTRICAL TORQUE SPECIFICATIONS SEE DWG NO. 128783-01-000

FOR ELECTRICAL CALLOUTS SEE DWG NO. 121339-01-000

DESCRIPTION:	
WIRING INSTL-FRONT END	
SHEET:	ITEM/PART NO. REV
6 OF 8	000026348 / 31559701000

8 7 6 5 4 3 2 1 06-Nov-2018



SECTION GA-GA

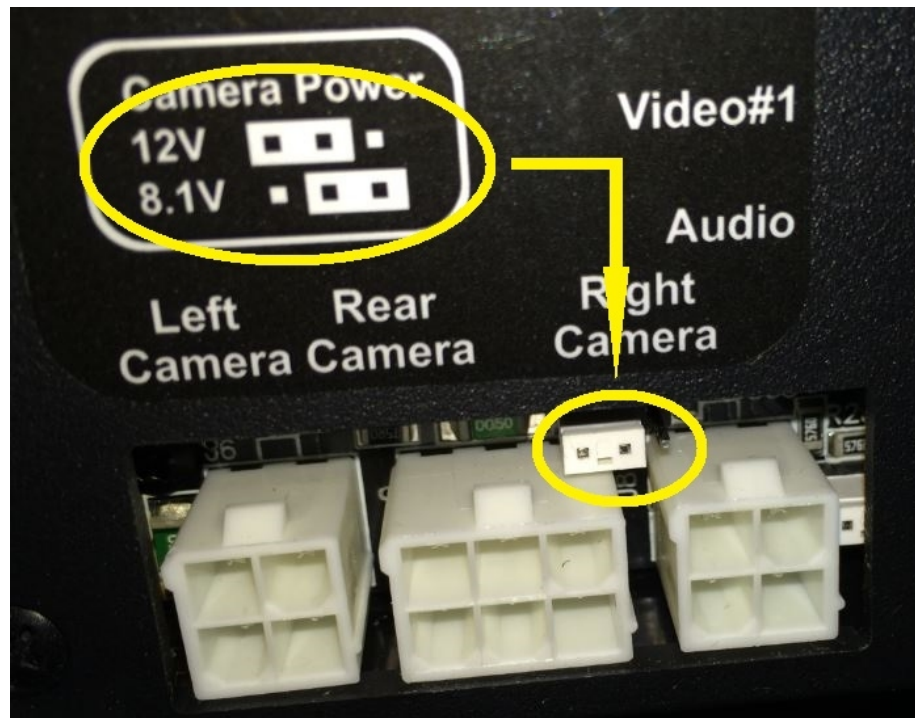
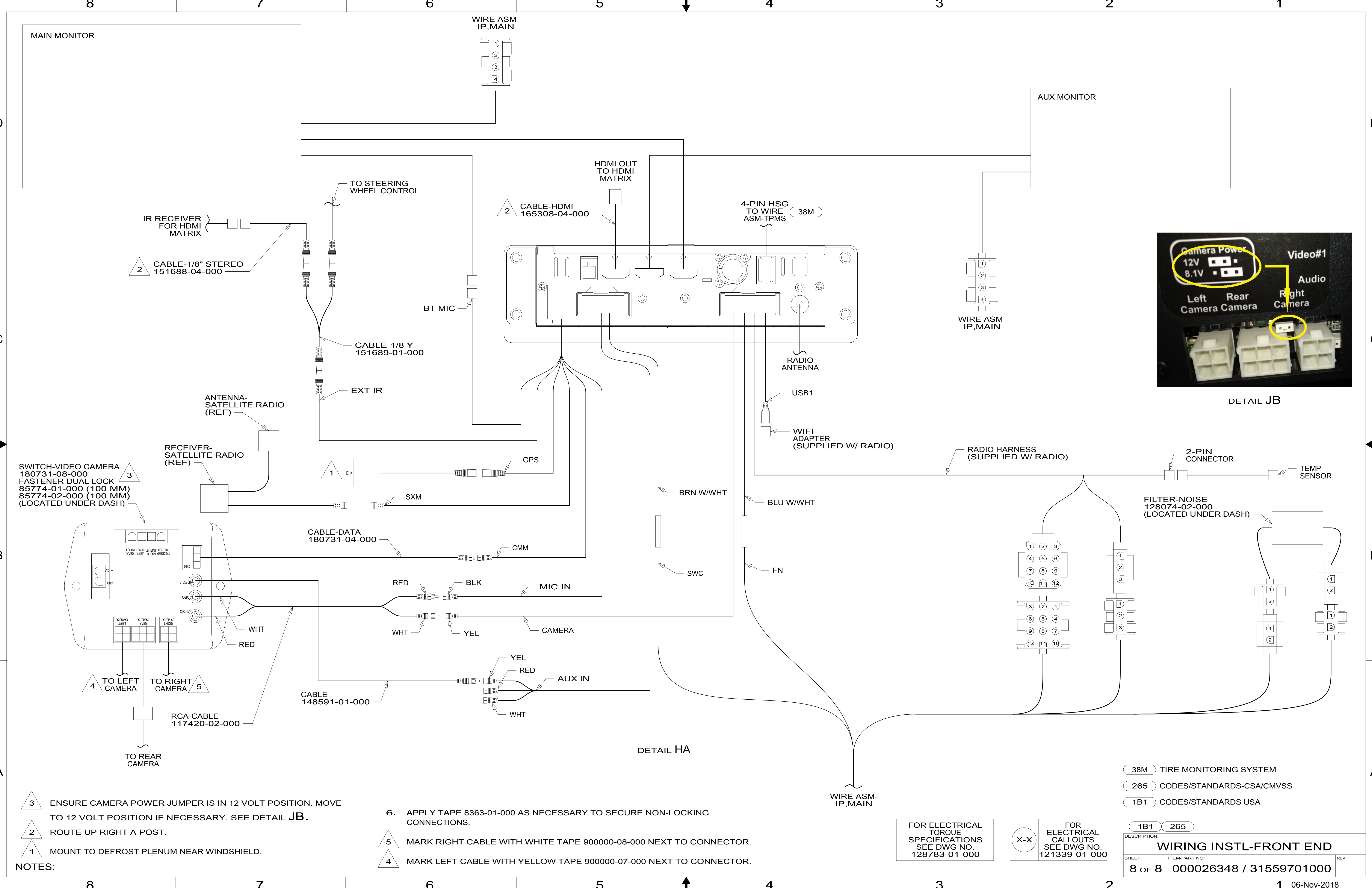
- NOTES:
- 4 SEE PANEL-REAR CAP FOR LOCATION.
 - 3 ALIGN CAMERA IN CENTER OF OPENING AND ADJUST CAMERA VIEWING SO BACKWALL IS JUST VISIBLE IN MONITOR.
 - 2 APPLY TAPE 180131-01-CHT TO SEAL CAMERA CONNECTOR, THEN COVER WITH TAPE 8363-01-000 WITH 157
 - 1 PARTS SUPPLIED WITH REAR CAMERA

- 15D INFOTAINMENT CENTER/GPS
- 157 INFOTAIN CTR/GPS SIRIUSXM
- 265 CODES/STANDARDS-CSA/CMVSS
- 1B1 CODES/STANDARDS USA

FOR ELECTRICAL TORQUE SPECIFICATIONS SEE DWG NO. 128783-01-000

FOR ELECTRICAL CALLOUTS SEE DWG NO. 121339-01-000

DESCRIPTION:	
WIRING INSTL-FRONT END	
SHEET:	ITEM/PART NO. REV
7 OF 8	000026348 / 31559701000



DETAIL JB

DETAIL HA

- NOTES:
- 3 ENSURE CAMERA POWER JUMPER IS IN 12 VOLT POSITION. MOVE TO 12 VOLT POSITION IF NECESSARY. SEE DETAIL JB.
 - 2 ROUTE UP RIGHT A-POST.
 - 1 MOUNT TO DEFROST PLENUM NEAR WINDSHIELD.

- 6. APPLY TAPE 8363-01-000 AS NECESSARY TO SECURE NON-LOCKING CONNECTIONS.
- 5 MARK RIGHT CABLE WITH WHITE TAPE 900000-08-000 NEXT TO CONNECTOR.
- 4 MARK LEFT CABLE WITH YELLOW TAPE 900000-07-000 NEXT TO CONNECTOR.

FOR ELECTRICAL TORQUE SPECIFICATIONS SEE DWG NO. 128783-01-000

FOR ELECTRICAL CALLOUTS SEE DWG NO. 121339-01-000

- 38M TIRE MONITORING SYSTEM
- 265 CODES/STANDARDS-CSA/CMVSS
- 1B1 CODES/STANDARDS USA

DESCRIPTION:	1B1 265	
WIRING INSTL-FRONT END		
SHEET:	ITEM/PART NO:	REV
8 OF 8	000026348 / 31559701000	