

8 7 6 5 4 3 2 1

D

D

C

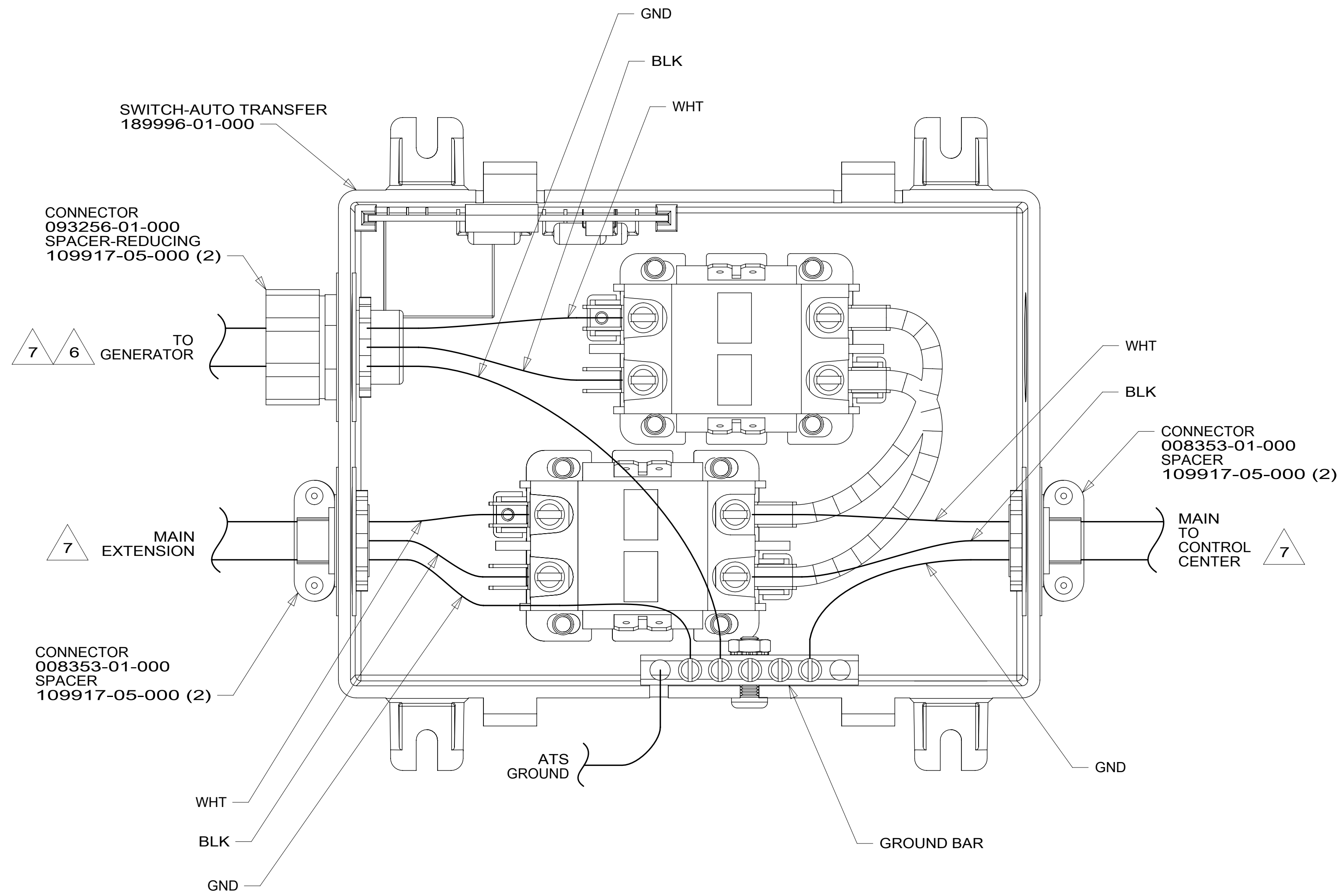
C

B

B

A

A



- 7 SEE WIRING INSTL-BODY, 110V FOR ADDITIONAL INFORMATION.
- 6 SEE GENERATOR INSTL FOR ADDITIONAL INFORMATION.
- 5. ALL 110V STRANDED WIRE WITHOUT TERMINALS TO BE STRIPPED 10 MM AND SOLDER DIPPED.
- 4. REMOVE 400 MM FROM OUTER JACKET ON ALL WIRES ENTERING LOAD CENTER AND TRIM INDIVIDUAL CONDUCTORS AS REQUIRED TO MAKE INTERNAL CONNECTIONS.
- 3. ALL WIRES TO BE CLAMPED WITHIN 200 MM OF ATS.
- 2. GROUND WIRES ARE NOT SHOWN FOR CLARITY.
- 1. ALL GROUNDS TO BE COVERED WITH TUBING 8041-02-000.

NOTES:

FOR ELECTRICAL TORQUE SPECIFICATIONS SEE DWG NO. 128783-01-000

FOR ELECTRICAL CALLOUTS SEE DWG NO. 121339-01-000

265 CODES/STANDARDS-CSA/CMVSS
 1B1 CODES/STANDARDS USA

1B1 265



DSNR:		ALL DIMENSIONS ARE IN MILLIMETERS	
DIFFR:		MATERIAL:	
UNSPECIFIED TOLERANCES:	WHOLE DIM (X) :	3	
	ONE-PLACE (X.X) :	1.5	
	TWO-PLACE (X.XX) :	0.50	
	ANGLE :	1°	
REFER TO ES0018 FOR FASTENER TIGHTENING GUIDELINES		WEIGHT: (LBS)	FIRST USED:
			17 259G
DESCRIPTION:			
ATS ASM			
SHEET:	ITEM/PART NO.:	REV:	
1 OF 1	000022572 / 31448801000		
REF:		1 22-Mar-2018	

8 7 6 5 4 3 2 1