

8 7 6 5 4 3 2 1

D

D

C

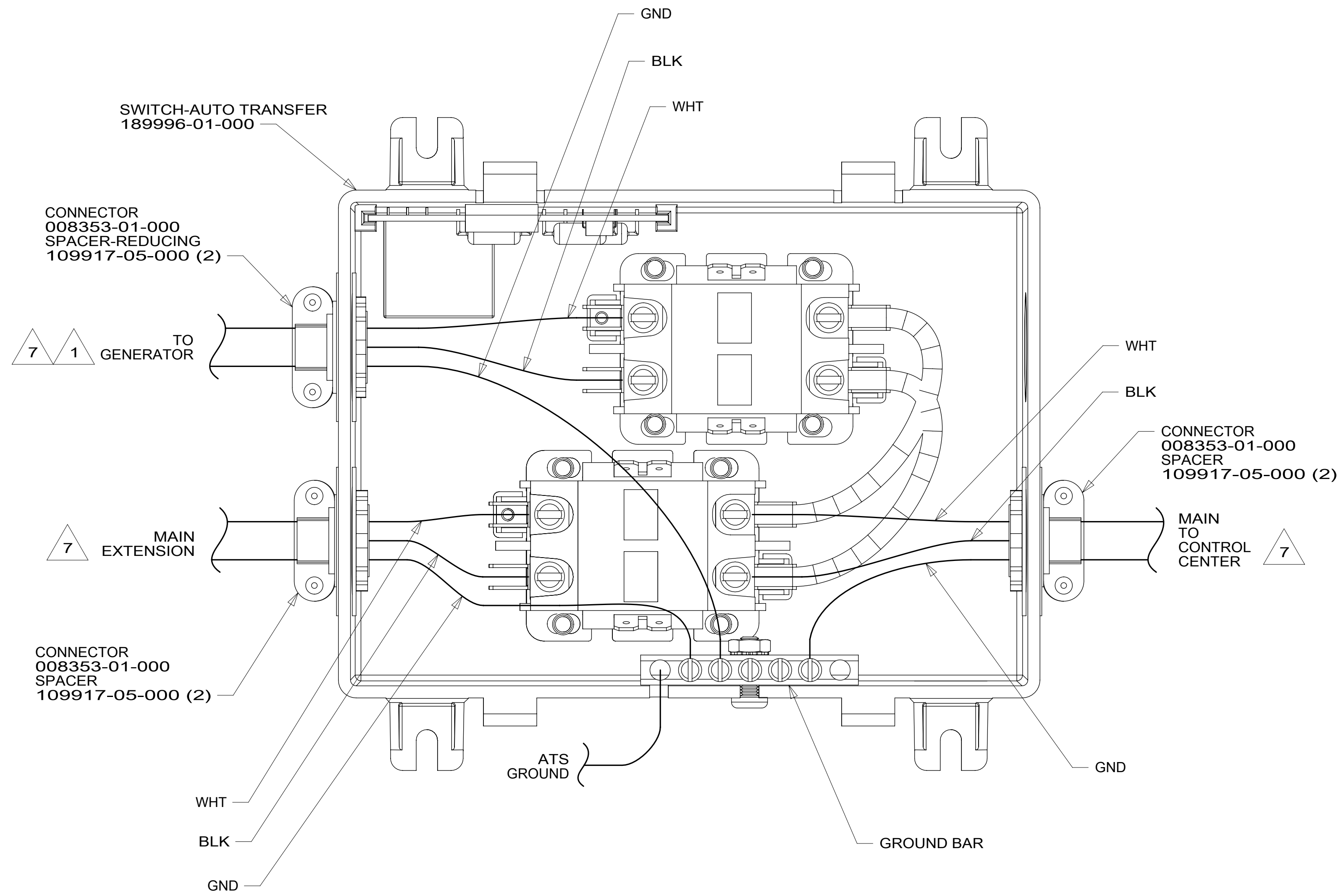
C

B

B

A

A



- 7 SEE WIRING INSTL-BODY, 110V FOR ADDITIONAL INFORMATION.
6. ALL 110V STRANDED WIRE WITHOUT TERMINALS TO BE STRIPPED 10 MM AND SOLDER DIPPED.
5. REMOVE 400 MM FROM OUTER JACKET ON ALL WIRES ENTERING LOAD CENTER AND TRIM INDIVIDUAL CONDUCTORS AS REQUIRED TO MAKE INTERNAL CONNECTIONS.
4. ALL WIRES TO BE CLAMPED WITHIN 200 MM OF ATS.
3. GROUND WIRES ARE NOT SHOWN FOR CLARITY.
2. ALL GROUNDS TO BE COVERED WITH TUBING 8041-02-000.
- 1 SEE GENERATOR INSTL FOR ADDITIONAL INFORMATION.

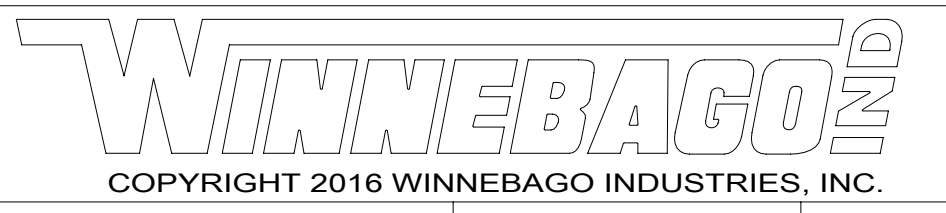
NOTES:

FOR ELECTRICAL TORQUE SPECIFICATIONS SEE DWG NO. 128783-01-000

FOR ELECTRICAL CALLOUTS SEE DWG NO. 121339-01-000

265 CODES/STANDARDS-CSA/CMVSS
 1B1 CODES/STANDARDS USA

1B1 265



DSNR:		ALL DIMENSIONS ARE IN MILLIMETERS	
DIFFR:		MATERIAL:	
UNSPECIFIED TOLERANCES:			
WHOLE DIM (X)	: 3		
ONE-PLACE (X.X)	: 1.5		
TWO-PLACE (X.XX)	: 0.50		
ANGLE	: 1°		
REFER TO ES0018 FOR FASTENER TIGHTENING GUIDELINES		WEIGHT: (LBS)	FIRST USED:
			17 248P
DESCRIPTION:			
ATS ASM			
SHEET:	ITEM/PART NO.:	REV:	
1 OF 1	000017748 / 31344801000		
REF:		1 22-Mar-2018	

8 7 6 5 4 3 2 1