

TV-50, FLAT PANEL ELED, HDTV
194671-01-000
SCREW
(SUPPLIED WITH TV)
NUT
D24-10-00U (8)
PLATE-MOUNTING ASM, TV
000131001 / 325637-01-CHT
PLATE-MOUNTING, TV
000178332 / 302680-01-CHT
NUT
D39-06-00U (4)
CONNECTOR-HDMI, 90 UP
179395-02-000 (2)

SPEAKER-SOUNDBAR, WIRELESS SUB, SAMSUNG
000170008 / 330888-01-000
FASTENER-DUAL LOCK
085774-01-000 (50 MM)(2)
085774-02-000 (50 MM)(2)

PLATE-WALL
149557-10-CHT
SCREW
G67-10-08U (2)

SATELLITE
RECEIVER
(REF)

DVD PLAYER
000183221 / 302822-01-000
FASTENER-DUAL LOCK
85774-01-000 (200 MM)
85774-02-000 (200 MM)

SUBWOOFER
(REF)

SPLITTER-HDMI, 1X2
178632-01-000
FASTENER-DUAL LOCK
85774-01-000 (100 MM)
85774-02-000 (100 MM)

45B & 783
BRACKET-ANTENNA, SATELLITE
000023112 / 314657-01-CHT
SCREW
000G39-08-12U (2)

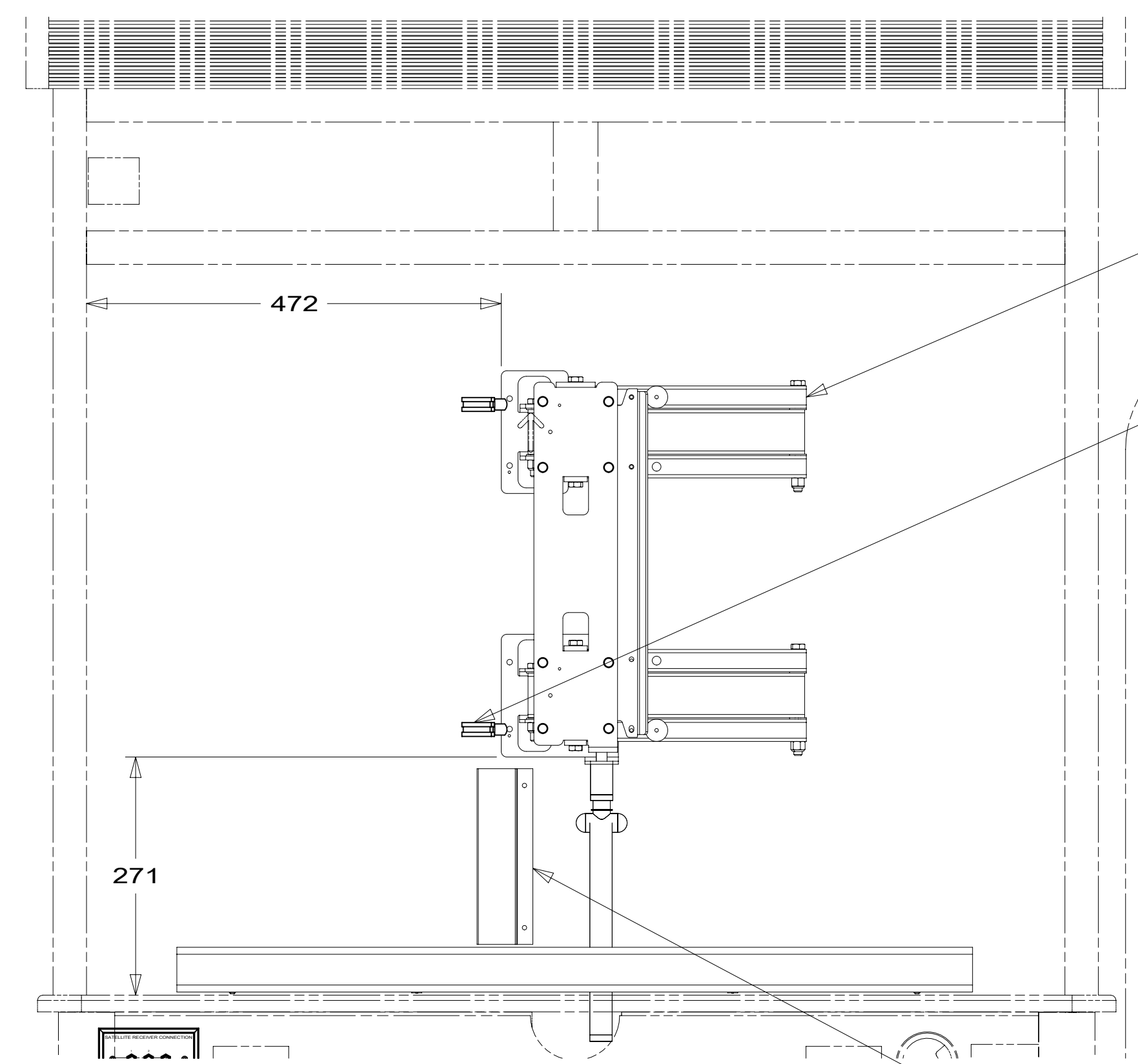
3 1 783
CONTROL-INTERIOR
183415-05-000
FASTENER-DUAL LOCK
85774-01-000 (200 MM)
85774-02-000 (200 MM)

BOLT-HOOD
058786-04-000 (2)
NUT
D39-05-00U (2)

RCP-2 (PUR)
OVHD FRONT
PLATE-WALL,
POWER SUPPLY
179004-02-CHT

PANEL ASM
155127-35-XXX
155127-36-XXX
000007511 / 310614-01-XXX
783 45D
78C 45D
45B

GROMMET-EDGE LINER
114208-05-000



BRACKET-TV SWING MOUNT
179241-04-CHT
SCREW
G42-04-16U (8)

CLAMP
10497-03-000 (2)
SCREW
G39-08-12U (2)

COVER-WIRE
176981-03-CHT
SCREW
G39-08-12U (2)

- 45D LOFT BED - WITHOUT
- 45B LOFT BED
- 78C SATELLITE SYSTEM READY
- 783 SATELLITE HD TV SYSTEM AUTOC
- 265 CODES/STANDARDS-CSA/CMVSS
- 1B1 CODES/STANDARDS USA

1B1 265



DSNR:		ALL DIMENSIONS ARE IN MILLIMETERS	
DIFFR:		MATERIAL:	
UNSPECIFIED TOLERANCES:	WHOLE DIM (X)	±	3
	ONE-PLACE (X.X)	±	1.5
	TWO-PLACE (X.XX)	±	0.50
	ANGLE	±	1°
REFER TO ES0018 FOR FASTENER TIGHTENING GUIDELINES		WEIGHT: (LBS)	FIRST USED:
			17 L34T
DESCRIPTION: WIRING INSTL-TV/DVD			
SHEET:	ITEM/PART NO.:	REF:	REV
1 OF 3	000015734 / 31295501000		

FOR ELECTRICAL TORQUE SPECIFICATIONS SEE DWG NO. 128783-01-000

FOR ELECTRICAL CALLOUTS SEE DWG NO. 121339-01-000

- NOTES:
- 3 CONTROL IS MOUNTED IN REAR OF CABINET WITH 45B
 - 2 USE TIE-WIRE 8343-01-000 TO SUPPORT WIRE HERE.
 - 1 INTERIOR CONTROL CONNECTS TO SATELLITE DATA CABLE. SEE ROOF ASM FOR ADDITIONAL INFORMATION.

8
SIDEWALL ASM-LEFT
(REF)

7

6

5

4

3

2

1

BB

BC

BD

TV-32" 1080P, SAMSUNG
000154928 / 326192-01-000

168

150

BRACKET-TV,
BASE,WALL,BDRM
(REF)

ROOF ASM
(REF)

SIDEWALL ASM-LEFT
(REF)

CABINET ASM-BATH
(REF)

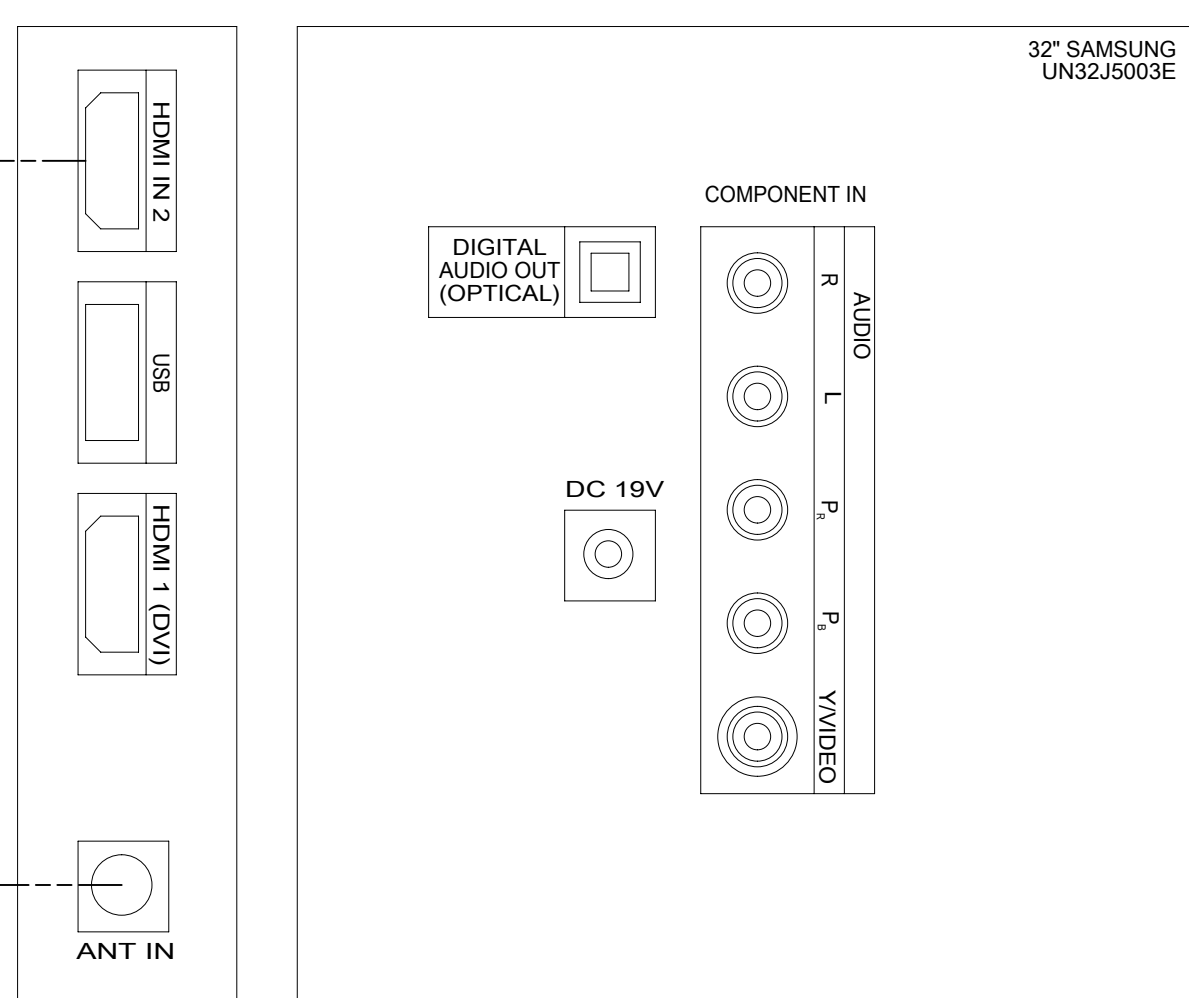
VIEW BD

VIEW BA
(TV NOT SHOWN)

FROM WIRE
ASM-ROOF

CABLE ASM-COAX
(GRN)

FROM WIRE
ASM-ROOF



VIEW BC

NUT
D39-06-00U (3)

BRACKET ASM-TV, WALL, BDRM
000155692 / 326437-01-CHT

SCREW
G11-10-20U (7)

SCREW
OMG02U-04-020 (4)

SCREW
G42-04-16U (5)

BRACKET-TV,
BASE,WALL,BDRM
185627-03-CHT

VIEW BB

265 CODES/STANDARDS-CSA/CMVSS

1B1 CODES/STANDARDS USA

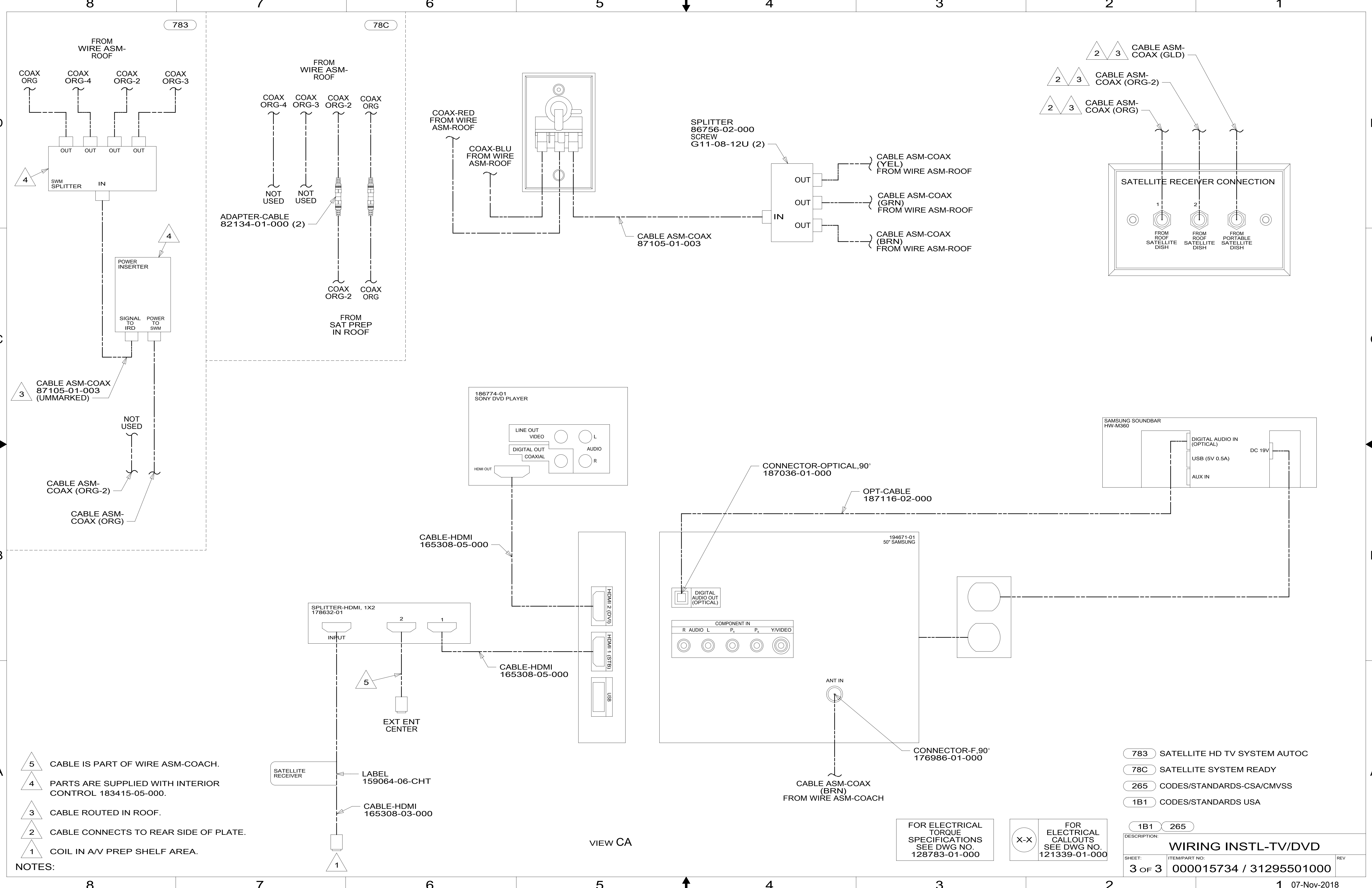
1B1 265

FOR ELECTRICAL
TORQUE
SPECIFICATIONS
SEE DWG NO.
128783-01-000

X-X

FOR ELECTRICAL
CALLOUTS
SEE DWG NO.
121339-01-000

DESCRIPTION: WIRING INSTL-TV/DVD		
SHEET: 2 OF 3	ITEM/PART NO: 000015734 / 31295501000	REV



- NOTES:
- 5 CABLE IS PART OF WIRE ASM-COACH.
 - 4 PARTS ARE SUPPLIED WITH INTERIOR CONTROL 183415-05-000.
 - 3 CABLE ROUTED IN ROOF.
 - 2 CABLE CONNECTS TO REAR SIDE OF PLATE.
 - 1 COIL IN AV PREP SHELF AREA.

- 783 SATellite HD TV SYSTEM AUTOC
- 78C SATellite SYSTEM READY
- 265 CODES/STANDARDS-CSA/CMVSS
- 1B1 CODES/STANDARDS USA

FOR ELECTRICAL TORQUE SPECIFICATIONS SEE DWG NO. 128783-01-000

FOR ELECTRICAL CALLOUTS SEE DWG NO. 121339-01-000

DESCRIPTION:		WIRING INSTL-TV/DVD	
SHEET:	ITEM/PART NO.:	REV	
3 OF 3	000015734 / 31295501000		

VIEW CA

D
C
B
A

D
C
B
A

8 7 6 5 4 3 2 1

8 7 6 5 4 3 2 1 07-Nov-2018