

8

7

6

5

4

3

2

1



D

D

C

C

B

B

A

A

		ITEM
CABLE ASM (YEL) FROM COACH BATTERY FUSE TO COACH SIDE OF AUX START SOLENOID	175207-52-037	1
CABLE ASM (ORG) FROM COACH BATTERY TO INVERTER FUSE	175207-62-003	2
CABLE ASM (ORG) FROM INVERTER FUSE TO INVERTER DISCONNECT	175207-62-012	3
CABLE ASM (ORG) FROM INVERTER DISCONNECT TO INVERTER POSITIVE TERMINAL	175207-62-005	4
CABLE ASM (BLK) FROM BATTERY TO INVERTER NEGATIVE TERMINAL	175211-01-018	5
CABLE ASM (BLK) FROM COACH BATTERY TO FRAME RAIL GROUND	175211-02-030	6
CABLE ASM (BLU) FROM CHASSIS BATTERY DISCONNECT TO LEVELING SYSTEM PUMP	141416-26-084	7
CABLE ASM (BLK) FROM LEVELING SYSTEM TO FRAME RAIL GROUND	133567-11-009	8
CABLE ASM (GRN) FROM COACH BAT DISC RELAY FUSE TO PASS THRU STUD IN FRONT LEFT COMPT	175207-42-107	9
CABLE ASM (GRN) FROM PASS THRU STUD IN FRONT LEFT COMPT TO GENERATOR	175207-42-024	10
CABLE ASM (BLK) FROM GENERATOR TO FRAME RAIL GROUND BOLT	175211-02-013	11
CABLE ASM (YEL) JUMPER BETWEEN POSITIVE POSTS ON COACH BATTERY	141417-51-002 (3)	12
CABLE ASM (BLK) JUMPER BETWEEN NEGATIVE POSTS ON COACH BATTERY	133568-11-002 (3)	13
CABLE ASM-TEMPERATURE,BATTERY	175385-03-000	14
CABLE ASM (RED) FROM CHASSIS BATTERY FUSE TO CHASSIS SIDE OF AUX START SOLENOID	175207-35-009	15
CABLE ASM (RED) FROM CHASSIS BATTERY TO CHASSIS BATTERY FUSE	175207-35-005	16
CABLE ASM (YEL) FROM COACH BATTERY TO COACH BATTERY FUSE	175207-52-003	17
CABLE ASM (RED) JUMPER BETWEEN POSITIVE POSTS IN LEFT FRONT COMPT	141417-32-002	18

265 CODES/STANDARDS-CSA/CMVSS

1B1 CODES/STANDARDS USA

1B1 265



COPYRIGHT 2023 WINNEBAGO INDUSTRIES, INC.

DSNR:		ALL DIMENSIONS ARE IN MILLIMETERS	
DFTR:		MATERIAL:	
UNSPECIFIED TOLERANCES:			
WHOLE DIM (X)	: 3		
ONE-PLACE (X.X)	: 1.5		
TWO-PLACE (X.XX)	: 0.50		
ANGLE	: 1°		

REFER TO ES0018 FOR FASTENER TIGHTENING GUIDELINES

WEIGHT: (LBS) FIRST USED: 17 L34T

BATTERY INSTL

SHEET:	ITEM/PART NO:	REV
1 OF 5	000015726 / 31295301000	

REF: 1 12-Apr-2023

FOR ELECTRICAL TORQUE SPECIFICATIONS SEE DWG NO. 128783-01-000

FOR ELECTRICAL CALLOUTS SEE DWG 000228177 344479-01-000

8

7

6

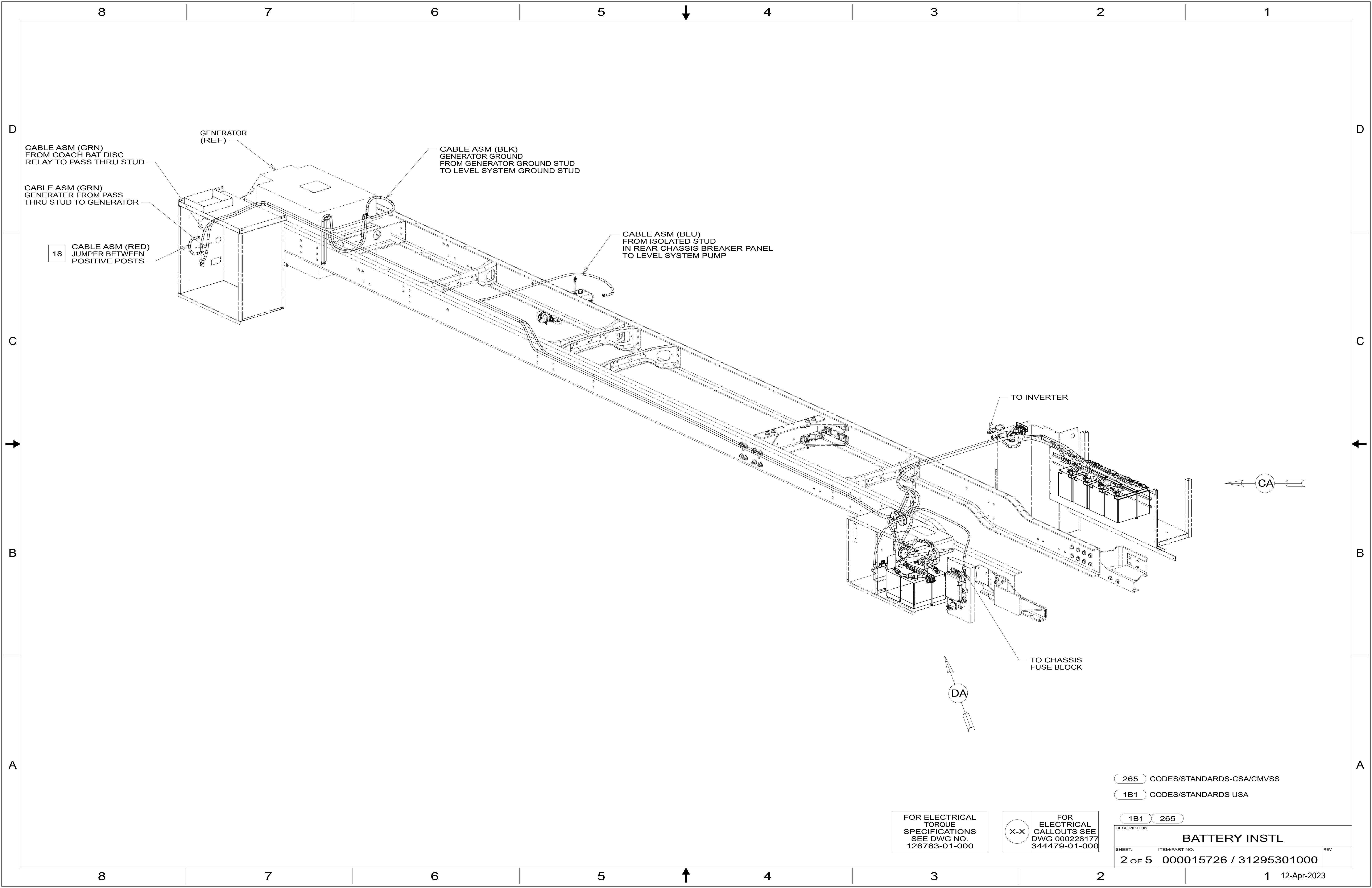
5

4

3

2

1



265 CODES/STANDARDS-CSA/CMVSS

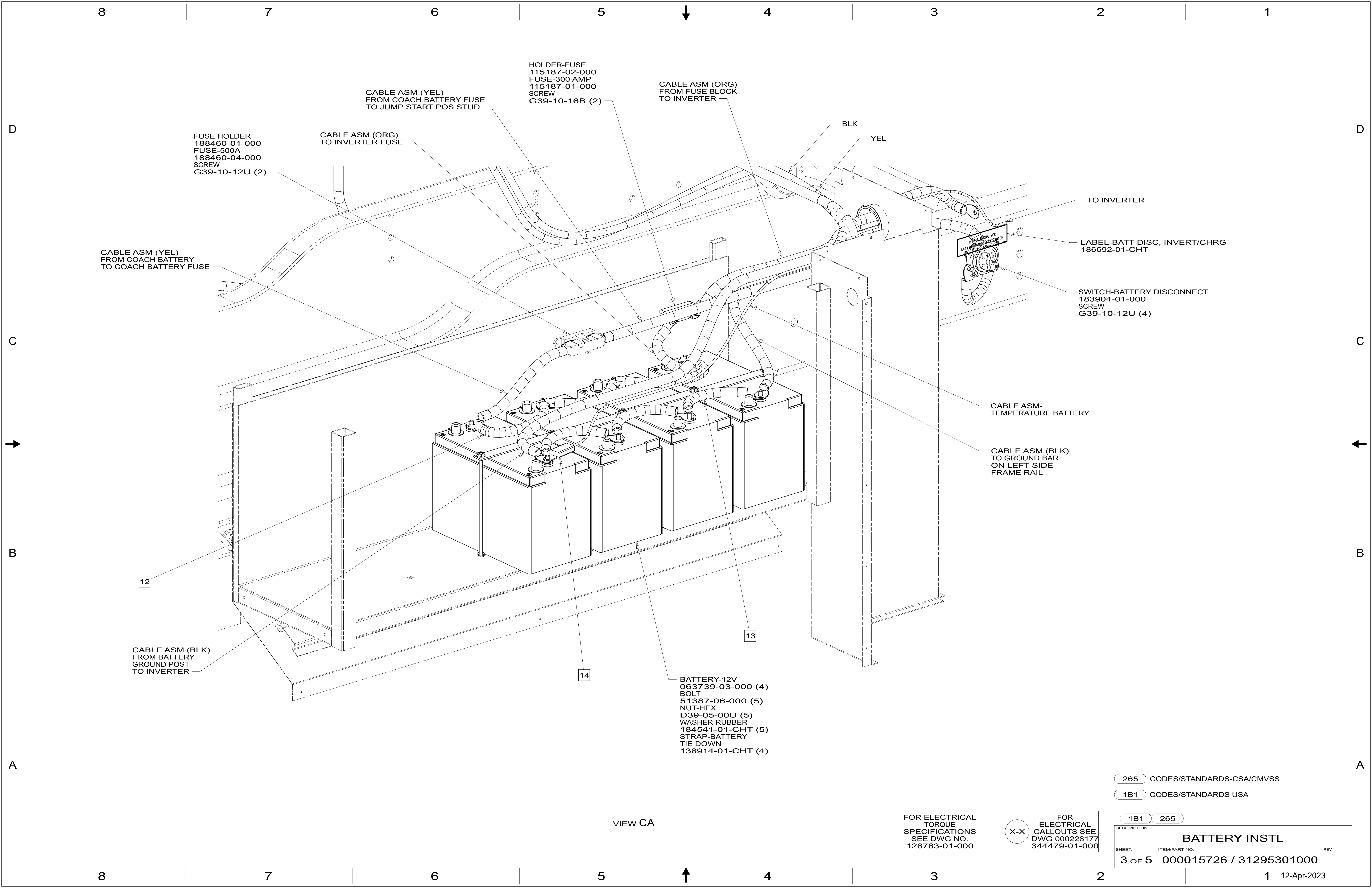
1B1 CODES/STANDARDS USA

1B1 265

FOR ELECTRICAL
 TORQUE
 SPECIFICATIONS
 SEE DWG NO.
 128783-01-000

FOR
 ELECTRICAL
 CALLOUTS SEE
 DWG 000228177
 344479-01-000

DESCRIPTION: BATTERY INSTL		
SHEET: 2 OF 5	ITEM/PART NO: 000015726 / 31295301000	REV



FUSE HOLDER
188460-01-000
FUSE-500A
188460-04-000
SCREW
G39-10-12U (2)

CABLE ASM (YEL)
FROM COACH BATTERY FUSE
TO JUMP START POS STUD

HOLDER-FUSE
115187-02-000
FUSE-300 AMP
115187-01-000
SCREW
G39-10-16B (2)

CABLE ASM (ORG)
FROM FUSE BLOCK
TO INVERTER

BLK
YEL

TO INVERTER

LABEL-BATT DISC, INVERT/CHRG
186692-01-CHT

SWITCH-BATTERY DISCONNECT
183904-01-000
SCREW
G39-10-12U (4)

CABLE ASM-
TEMPERATURE, BATTERY

CABLE ASM (BLK)
TO GROUND BAR
ON LEFT SIDE
FRAME RAIL

BATTERY-12V
063739-03-000 (4)
BOLT
51387-06-000 (5)
NUT-HEX
D39-05-00U (5)
WASHER-RUBBER
184541-01-CHT (5)
STRAP-BATTERY
TIE DOWN
138914-01-CHT (4)

CABLE ASM (BLK)
FROM BATTERY
GROUND POST
TO INVERTER

VIEW CA

265 CODES/STANDARDS-CSA/CMVSS

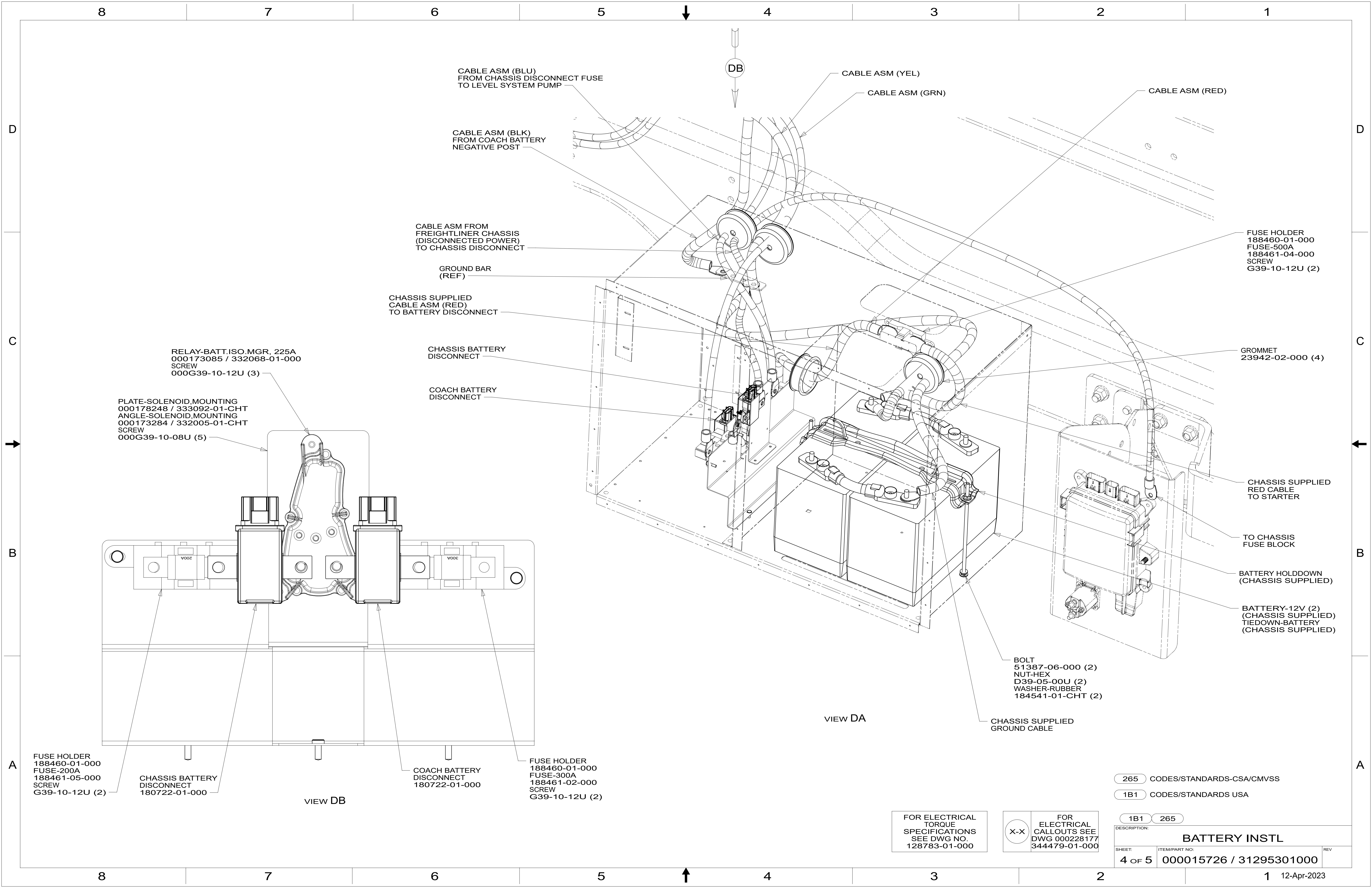
1B1 CODES/STANDARDS USA

1B1 265

FOR ELECTRICAL
TORQUE
SPECIFICATIONS
SEE DWG NO.
128783-01-000

FOR
ELECTRICAL
CALLOUTS SEE
DWG 000228177
344479-01-000

DESCRIPTION: BATTERY INSTL		
SHEET: 3 OF 5	ITEM/PART NO: 000015726 / 31295301000	REV



VIEW DA

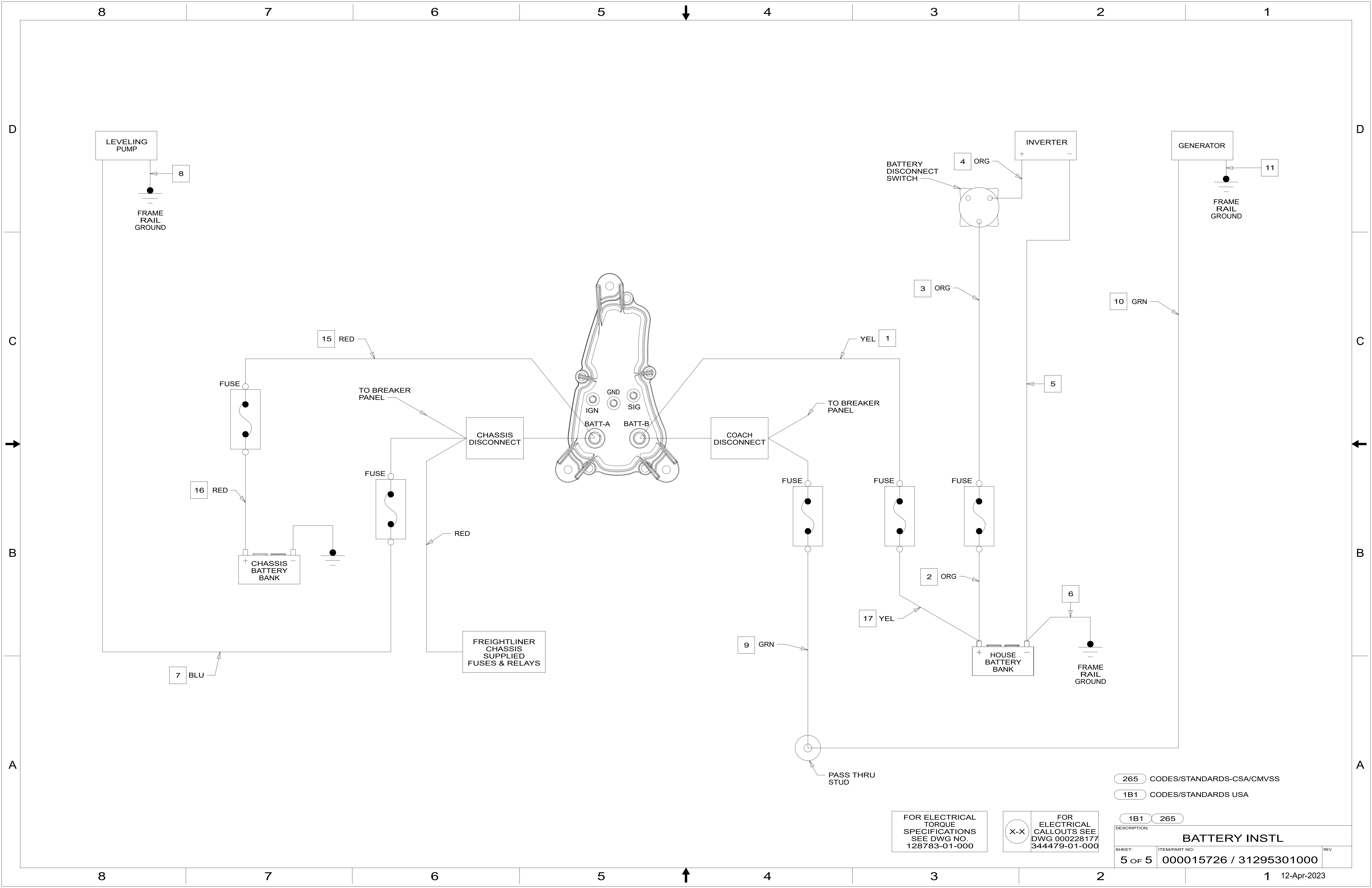
VIEW DB

FOR ELECTRICAL TORQUE SPECIFICATIONS SEE DWG NO. 128783-01-000

FOR ELECTRICAL CALLOUTS SEE DWG 000228177 344479-01-000

265	CODES/STANDARDS-CSA/CMVSS
1B1	CODES/STANDARDS USA

1B1	265	
DESCRIPTION:		
BATTERY INSTL		
SHEET:	ITEM/PART NO.:	REV:
4 OF 5	000015726 / 31295301000	



FOR ELECTRICAL TORQUE SPECIFICATIONS SEE DWG NO. 128783-01-000

FOR ELECTRICAL CALLOUTS SEE DWG 000228177 344479-01-000

- 265 CODES/STANDARDS-CSA/CMVSS
- 1B1 CODES/STANDARDS USA

DESCRIPTION: 1B1 265

BATTERY INSTL

SHEET: 5 OF 5 ITEM/PART NO.: 000015726 / 31295301000 REV