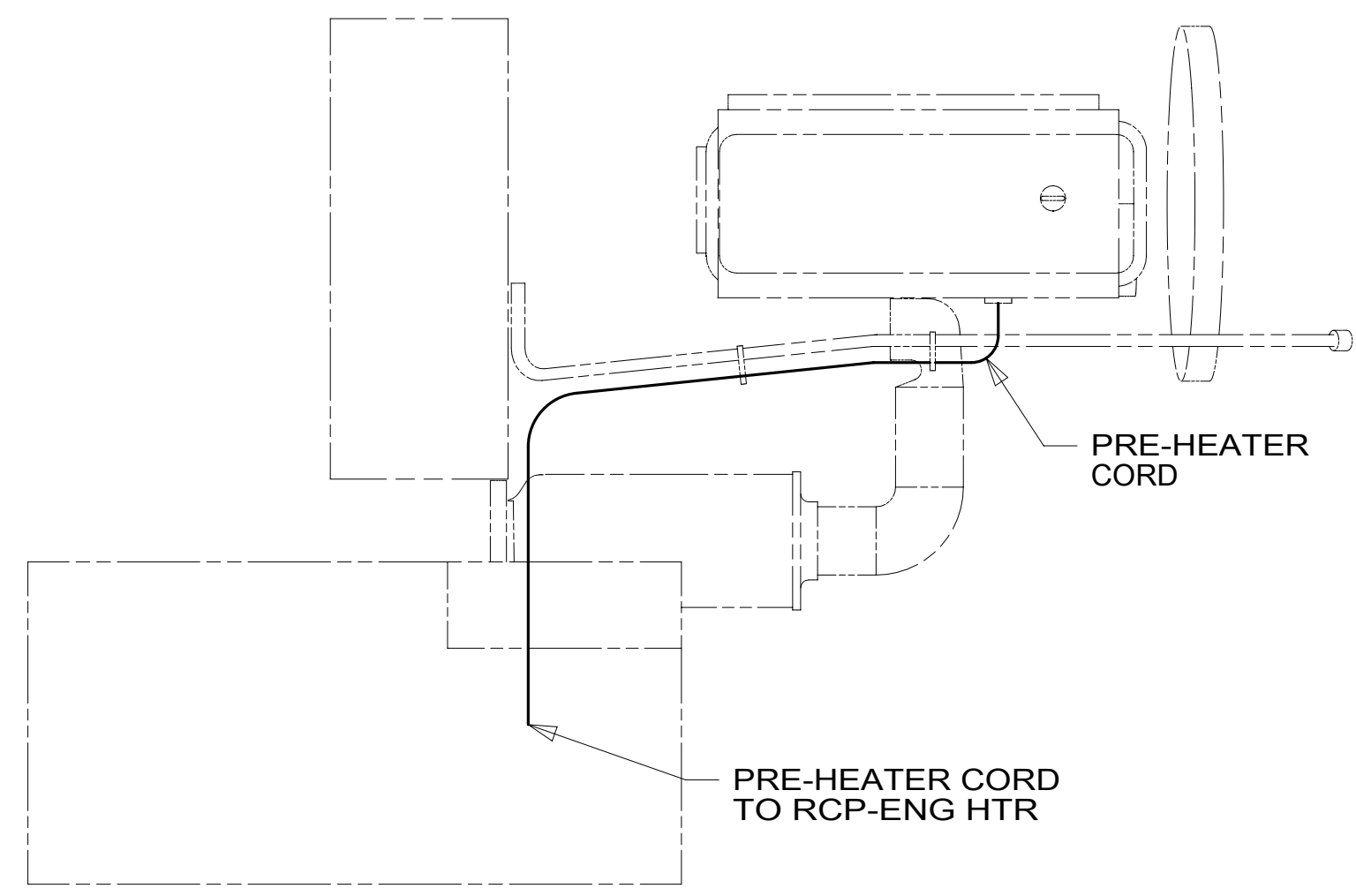


- 7 REST WIRE IN FRAME RAIL WHEN APPLICABLE.
- 6 CLAMP 83610-01-000, SCREW G39-08-12B.
- 5 CLAMP 10497-03-000, SCREW G39-08-12B.
- 4 USE TIE-WIRE 8343-04-000 TO SECURE WIRES TO FLOOR SUPPORT FRAME AT LEAST ONCE EVERY 600MM.
- 3 SECURE CORD AWAY FROM ALL MOVING PARTS AND EXHAUST WITH WIRE-TIE 93147-01-000 AS REQUIRED.
- 2 SEE WIRING INSTL-FRONT END FOR ADDITIONAL INFORMATION.
- 1 SEE BATTERY INSTL FOR ADDITIONAL INFORMATION.

NOTES:



DETAIL AA 3

FOR ELECTRICAL TORQUE SPECIFICATIONS SEE DWG NO. 128783-01-000

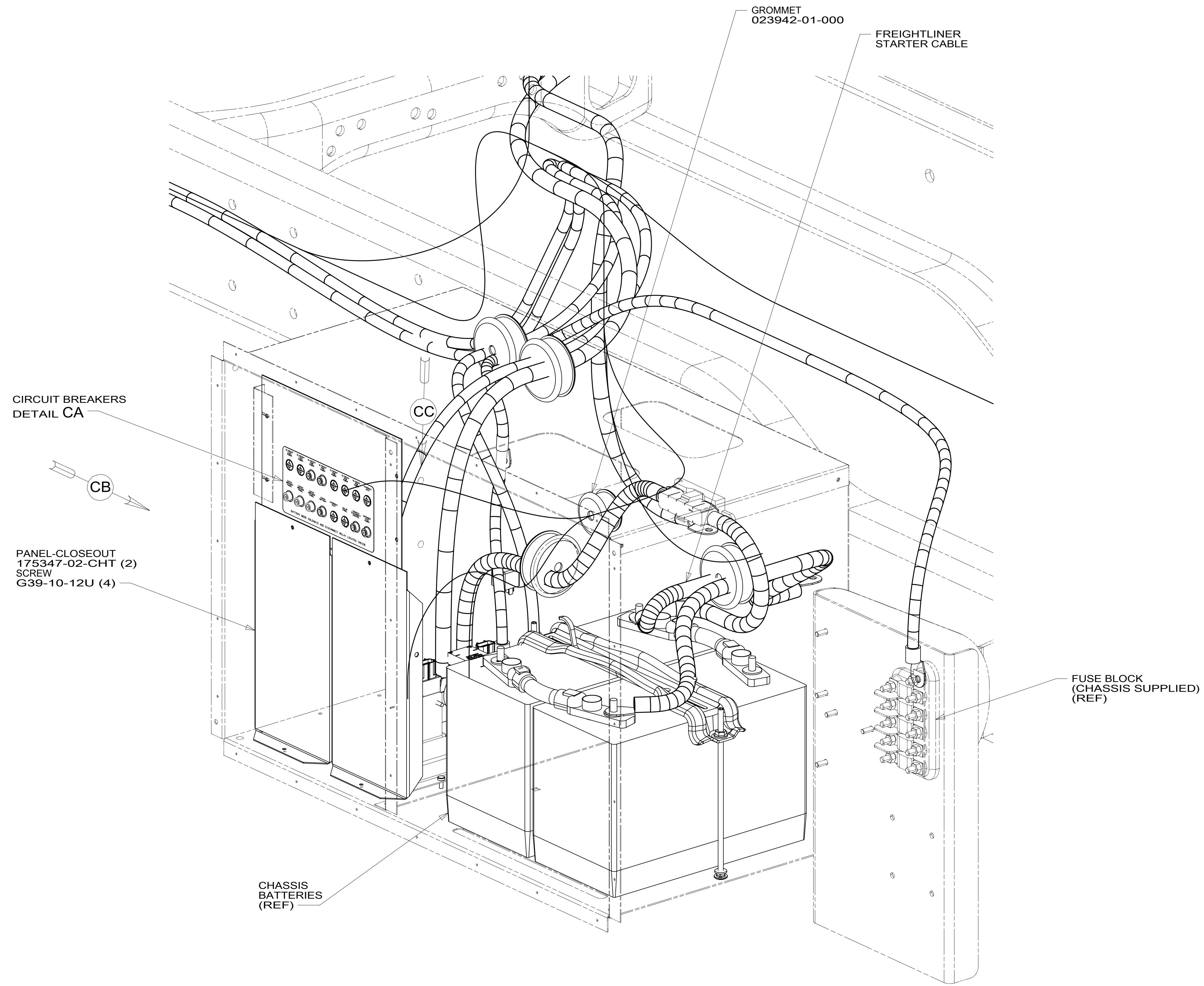
FOR ELECTRICAL CALLOUTS SEE DWG NO. 121339-01-000

- 265 CODES/STANDARDS-CSA/CMVSS
- 1B1 CODES/STANDARDS USA

WINNEBAGO COPYRIGHT 2016 WINNEBAGO INDUSTRIES, INC.	
DSNR:	ALL DIMENSIONS ARE IN MILLIMETERS
DFFR:	
UNSPECIFIED TOLERANCES:	MATERIAL:
WHOLE DIM (X) : 3	
ONE-PLACE (X.X) : 1.5	
TWO-PLACE (X.XX) : 0.50	
ANGLE : 1°	
REFER TO ES0018 FOR FASTENER TIGHTENING GUIDELINES	WEIGHT: (LBS) FIRST USED: 17 L34T
DESCRIPTION: WIRING INSTL-CHASSIS	
SHEET: 1 OF 4	ITEM/PART NO: 000015721 / 31295001000
REF:	REV: 1 07-Nov-2017

8 7 6 5 4 3 2 1

D
C
B
A



VIEW BA

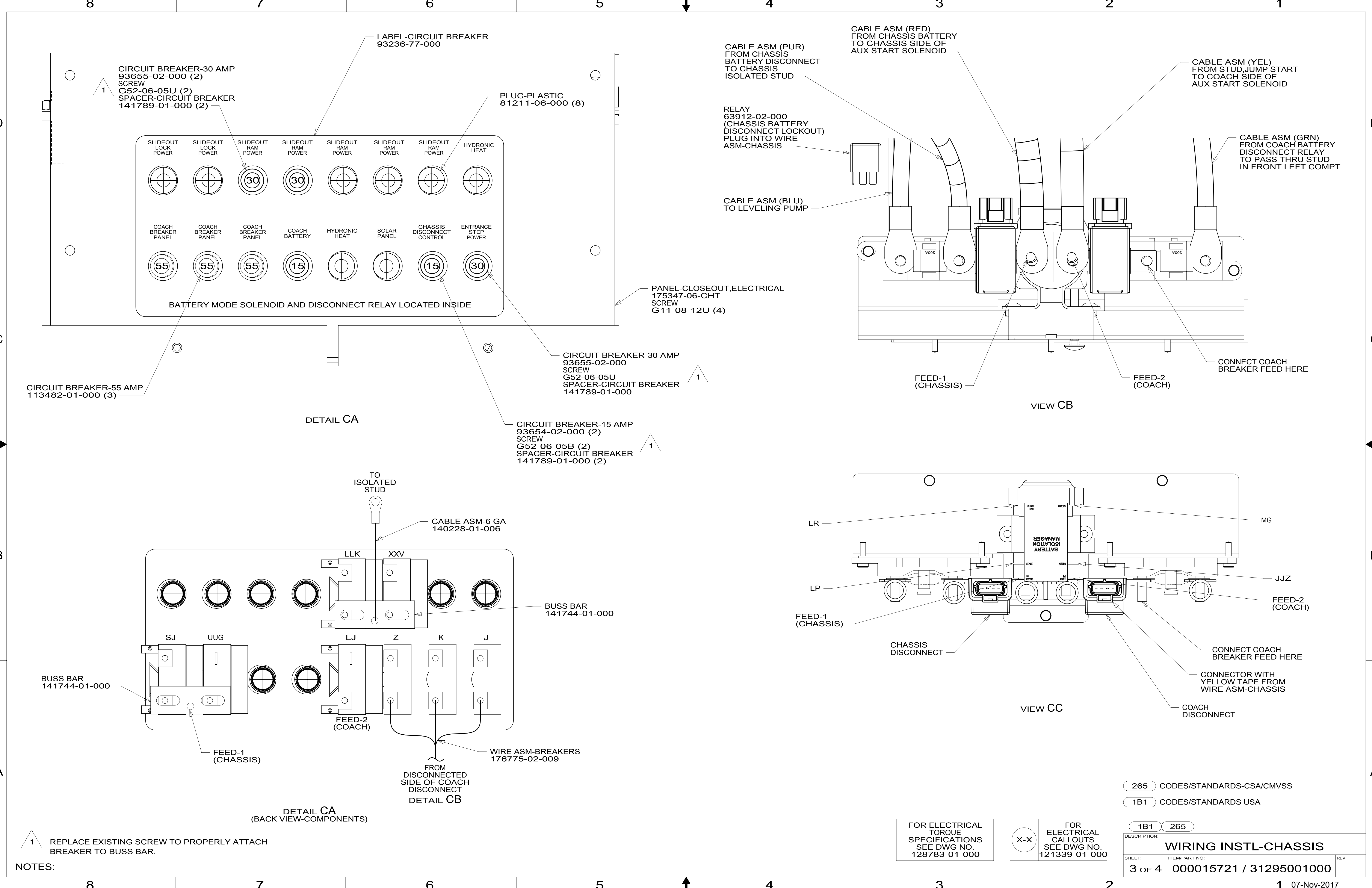
FOR ELECTRICAL TORQUE SPECIFICATIONS SEE DWG NO. 128783-01-000

FOR ELECTRICAL CALLOUTS SEE DWG NO. 121339-01-000

265 CODES/STANDARDS-CSA/CMVSS
1B1 CODES/STANDARDS USA

DESCRIPTION:		1B1 265
WIRING INSTL-CHASSIS		
SHEET:	ITEM/PART NO.:	REV
2 OF 4	000015721 / 31295001000	

8 7 6 5 4 3 2 1 07-Nov-2017



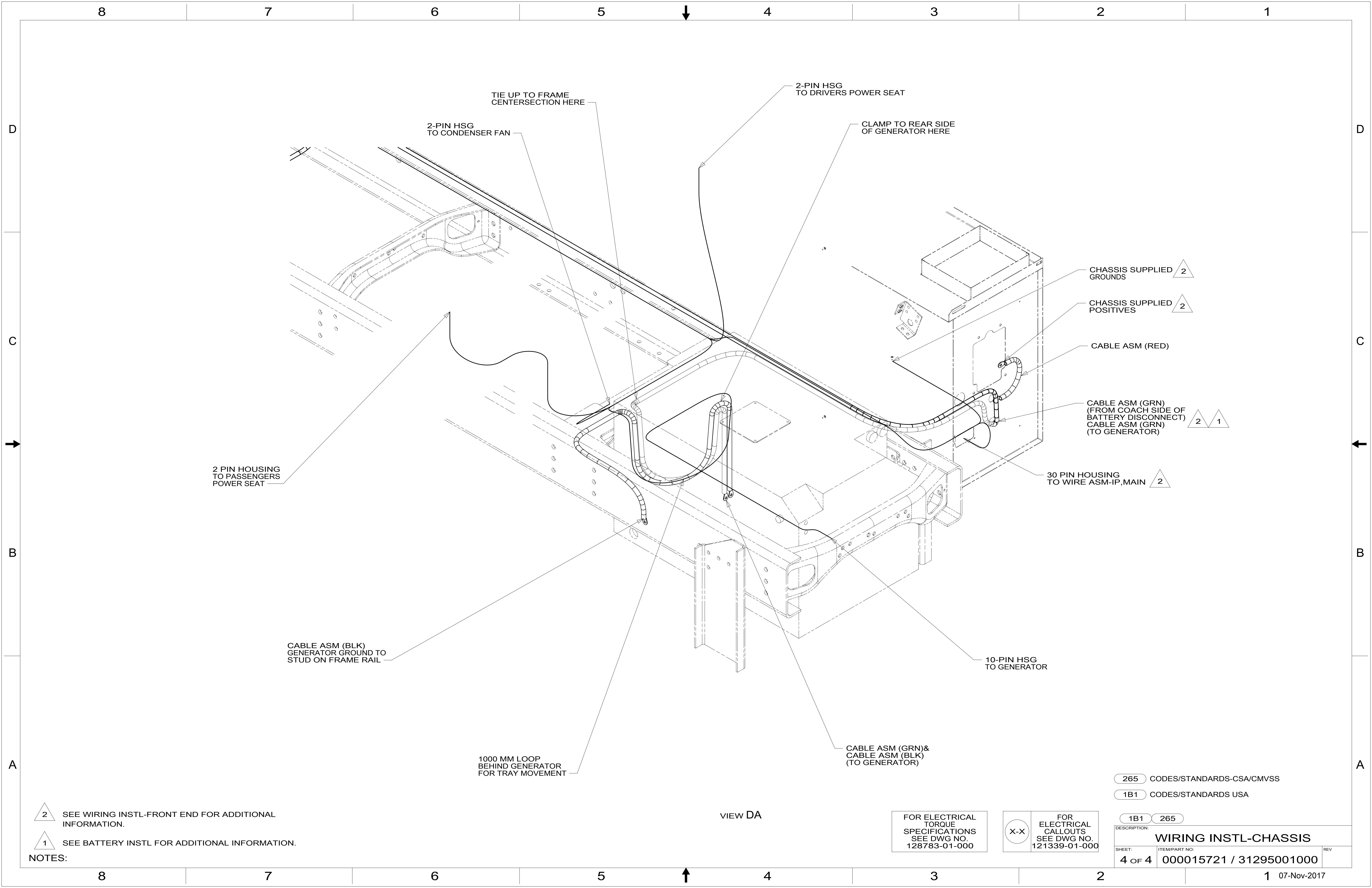
1 REPLACE EXISTING SCREW TO PROPERLY ATTACH BREAKER TO BUSS BAR.

FOR ELECTRICAL TORQUE SPECIFICATIONS SEE DWG NO. 128783-01-000

FOR ELECTRICAL CALLOUTS SEE DWG NO. 121339-01-000

- 265 CODES/STANDARDS-CSA/CMVSS
- 1B1 CODES/STANDARDS USA

DESCRIPTION: WIRING INSTL-CHASSIS	
SHEET: 3 OF 4	ITEM/PART NO.: 000015721 / 31295001000
REV 07-Nov-2017	



TIE UP TO FRAME CENTERSECTION HERE

2-PIN HSG TO CONDENSER FAN

2-PIN HSG TO DRIVERS POWER SEAT

CLAMP TO REAR SIDE OF GENERATOR HERE

2 PIN HOUSING TO PASSENGERS POWER SEAT

CHASSIS SUPPLIED GROUNDS

CHASSIS SUPPLIED POSITIVES

CABLE ASM (RED)

CABLE ASM (GRN) (FROM COACH SIDE OF BATTERY DISCONNECT)
CABLE ASM (GRN) (TO GENERATOR)

30 PIN HOUSING TO WIRE ASM-IP,MAIN

10-PIN HSG TO GENERATOR

CABLE ASM (BLK) GENERATOR GROUND TO STUD ON FRAME RAIL

1000 MM LOOP BEHIND GENERATOR FOR TRAY MOVEMENT

CABLE ASM (GRN) & CABLE ASM (BLK) (TO GENERATOR)

2 SEE WIRING INSTL-FRONT END FOR ADDITIONAL INFORMATION.

1 SEE BATTERY INSTL FOR ADDITIONAL INFORMATION.

VIEW DA

FOR ELECTRICAL TORQUE SPECIFICATIONS SEE DWG NO. 128783-01-000

FOR ELECTRICAL CALLOUTS SEE DWG NO. 121339-01-000

265 CODES/STANDARDS-CSA/CMVSS

1B1 CODES/STANDARDS USA

DESCRIPTION:		1B1 265	
WIRING INSTL-CHASSIS			
SHEET:	ITEM/PART NO.:	REV	
4 OF 4	000015721 / 31295001000		