

8 7 6 5 4 3 2 1

D

D

C

C

B

B

A

A

CABLE ASM-CHASSIS GND EXT (BLK)	133566-12-010	
CABLE ASM-CHASSIS BATTERY DISCONNECT SUPPLY (RED)	141415-32-026	
CABLE ASM-COACH BATTERY DISCONNECT SUPPLY (YEL)	141416-52-037	
CABLE ASM-COACH BATTERY GND (BLK)	133567-12-008	
CABLE ASM-CHASSIS BATTERY DISCONNECT RETURN (PUR)	141415-12-025	
CABLE ASM-GENERATOR (GRN)	141415-42-099	
LEVELING SYSTEM POWER CABLE (BLU)	141415-29-010	60M
LEVELING SYSTEM GND CABLE (BLK)	133566-12-008	60M
CABLE ASM-STARTER (RED)	141416-32-012	
CABLE ASM (ORG) FROM COACH BATTERY TO INVERTER FUSE	175207-62-005	
CABLE ASM (ORG) FROM INVERTER FUSE TO INVERTER BATTERY DISCONNECT	175207-62-016	
CABLE ASM (ORG) FROM BATTERY DISCONNECT TO POSITIVE POST ON INVERTER	175207-62-006	
CABLE ASM (BLK) FROM COACH BATTERY TO INVERTER NEGATIVE TERMINAL	175211-02-018	
CABLE ASM (YEL) JUMPER BETWEEN POSITIVE POSTS ON COACH BATTERY	141417-52-004	
CABLE ASM (YEL) JUMPER BETWEEN POSITIVE POSTS ON COACH BATTERY	141417-51-002 (2)	15L
CABLE ASM (BLK) JUMPER BETWEEN NEGATIVE POSTS ON COACH BATTERY	133568-12-004	
CABLE ASM (BLK) JUMPER BETWEEN NEGATIVE POSTS ON COACH BATTERY	133568-11-002 (2)	15L
CABLE ASM-INVERTER GROUND (GRN)	136145-01-018	
CABLE ASM-COACH BATTERY FUSE	141416-52-005	
CABLE ASM-CHASSIS BATTERY FUSE	141415-32-003	
CABLE ASM-TEMPERATURE		1

60M

60M

15L

15L

1

- 60M HYDRAULIC LEVEL JACKS-AUTO
- 15L RESIDENTIAL REFRIGERATOR PKG
- 265 CODES/STANDARDS-CSA/CMVSS
- 1B1 CODES/STANDARDS USA

1B1 265



DSNR:		ALL DIMENSIONS ARE IN MILLIMETERS	
DIFFR:		MATERIAL:	
UNSPECIFIED TOLERANCES:			
WHOLE DIM (X)	: 3		
ONE-PLACE (X.X)	: 1.5		
TWO-PLACE (X.XX)	: 0.50		
ANGLE	: 1°		
REFER TO ES0018 FOR FASTENER TIGHTENING GUIDELINES		WEIGHT: (LBS)	FIRST USED:
			17 E35F

FOR ELECTRICAL TORQUE SPECIFICATIONS SEE DWG NO. 128783-01-000

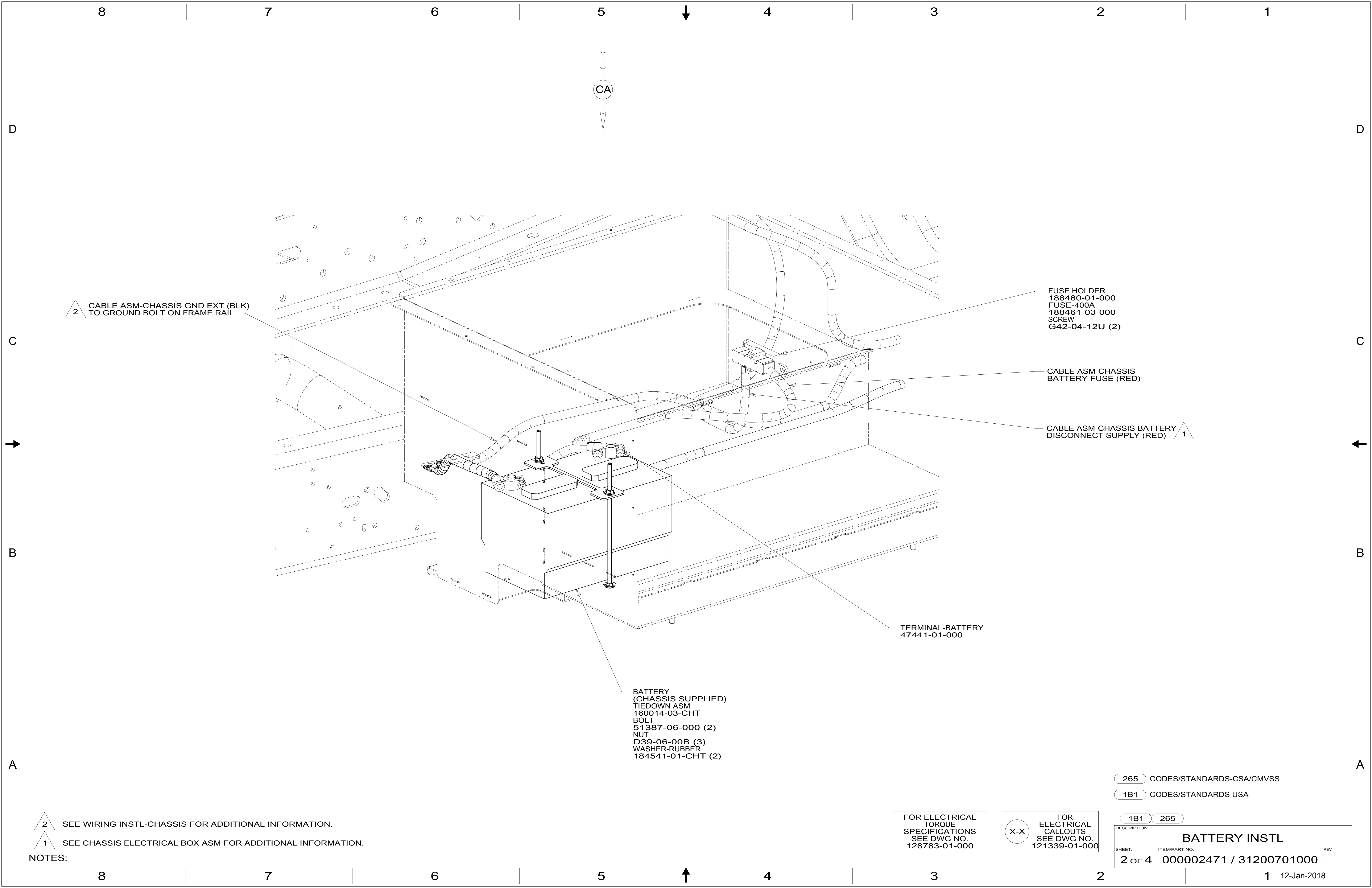
FOR ELECTRICAL CALLOUTS SEE DWG NO. 121339-01-000

DESCRIPTION:		
BATTERY INSTL		
SHEET:	ITEM/PART NO.:	REV:
1 OF 4	000002471 / 31200701000	
REF:		1 12-Jan-2018

1 CABLE ASM-TEMPERATURE IS PART OF WIRE ASM-CHASSIS.

NOTES:

8 7 6 5 4 3 2 1



CA

2 CABLE ASM-CHASSIS GND EXT (BLK)
TO GROUND BOLT ON FRAME RAIL

FUSE HOLDER
188460-01-000
FUSE-400A
188461-03-000
SCREW
G42-04-12U (2)

CABLE ASM-CHASSIS
BATTERY FUSE (RED)

CABLE ASM-CHASSIS BATTERY
DISCONNECT SUPPLY (RED) 1

TERMINAL-BATTERY
47441-01-000

BATTERY
(CHASSIS SUPPLIED)
TIEDOWN ASM
160014-03-CHT
BOLT
51387-06-000 (2)
NUT
D39-06-00B (3)
WASHER-RUBBER
184541-01-CHT (2)

2 SEE WIRING INSTL-CHASSIS FOR ADDITIONAL INFORMATION.
1 SEE CHASSIS ELECTRICAL BOX ASM FOR ADDITIONAL INFORMATION.

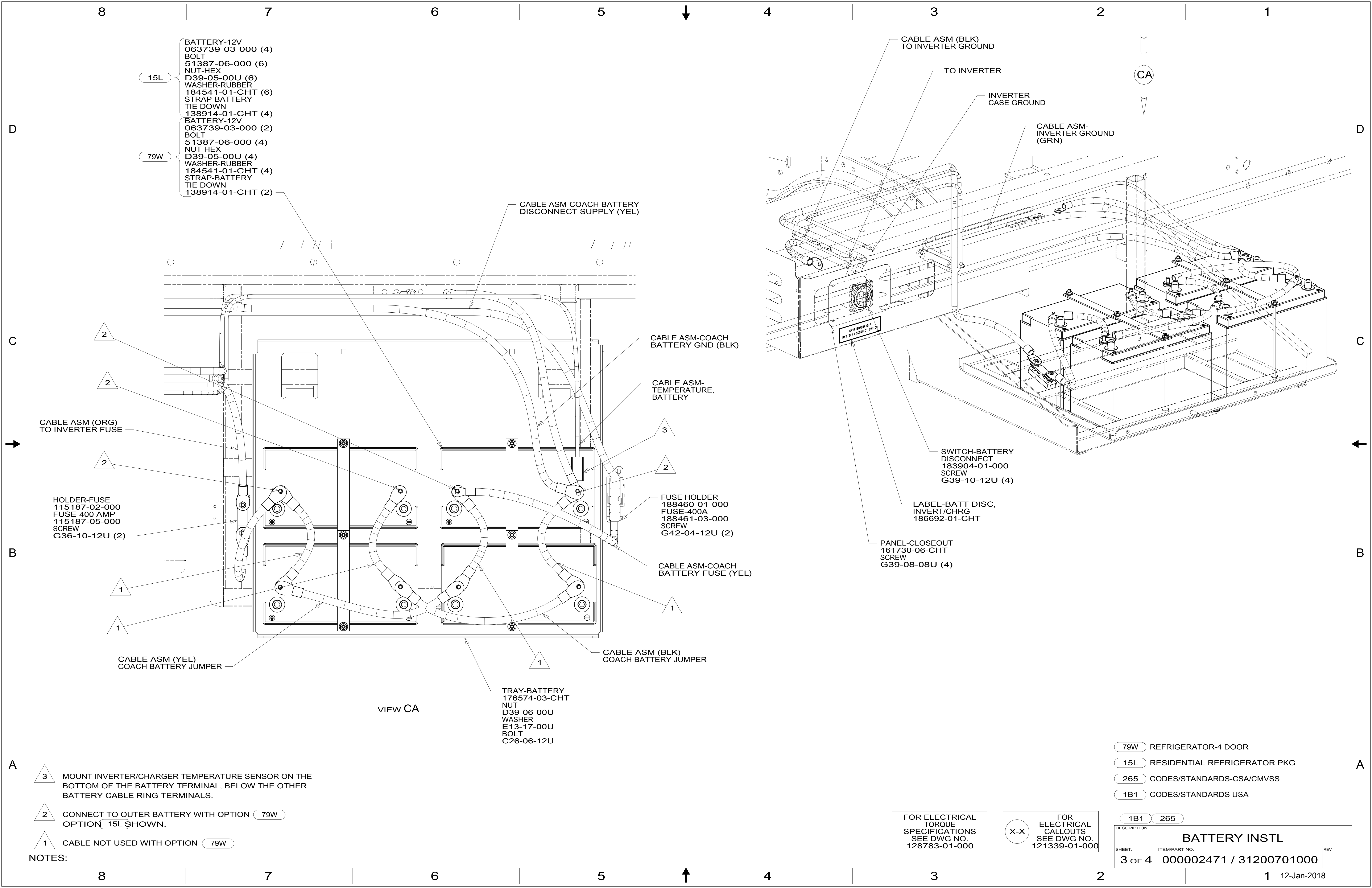
NOTES:

265 CODES/STANDARDS-CSA/CMVSS
1B1 CODES/STANDARDS USA

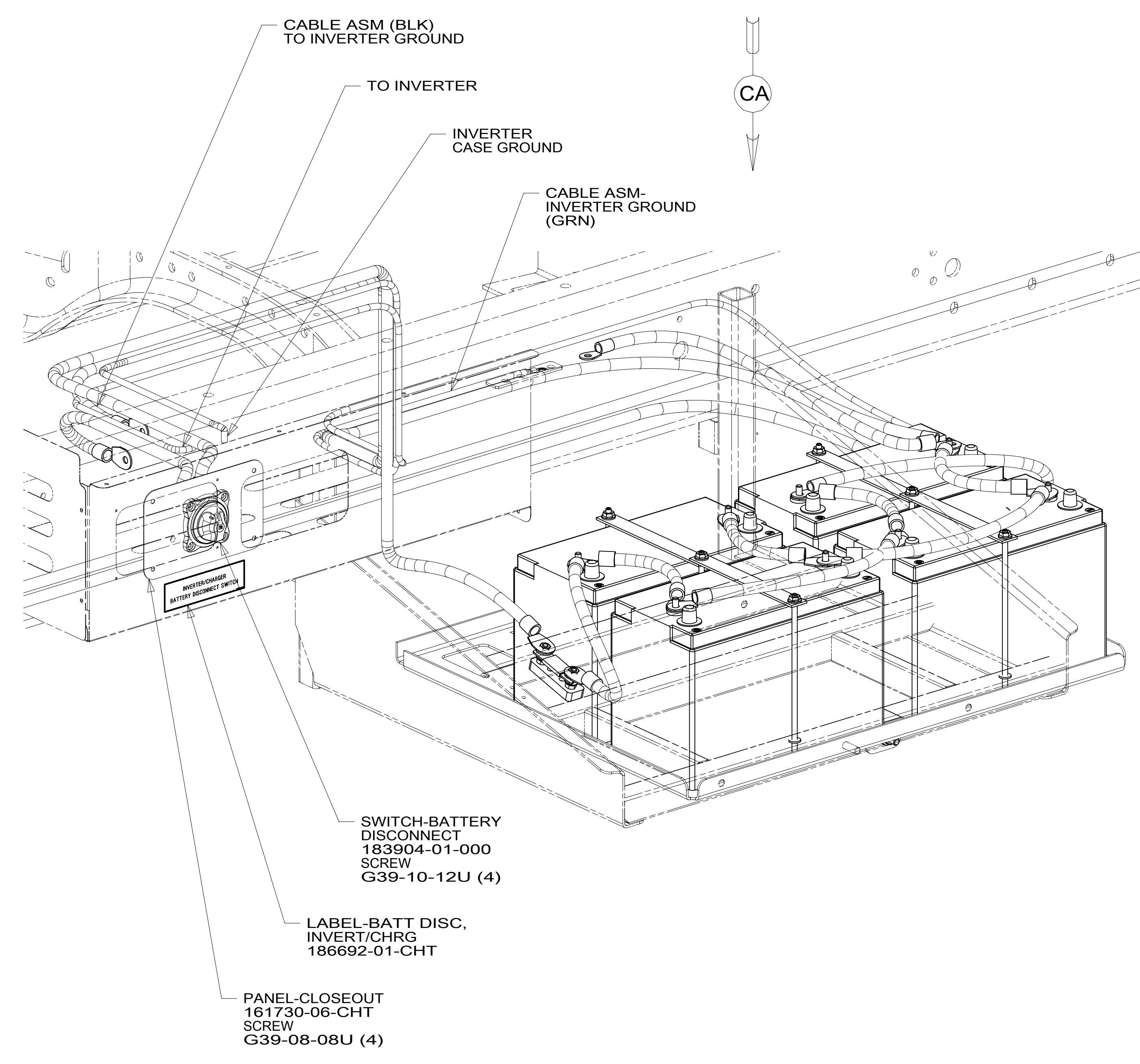
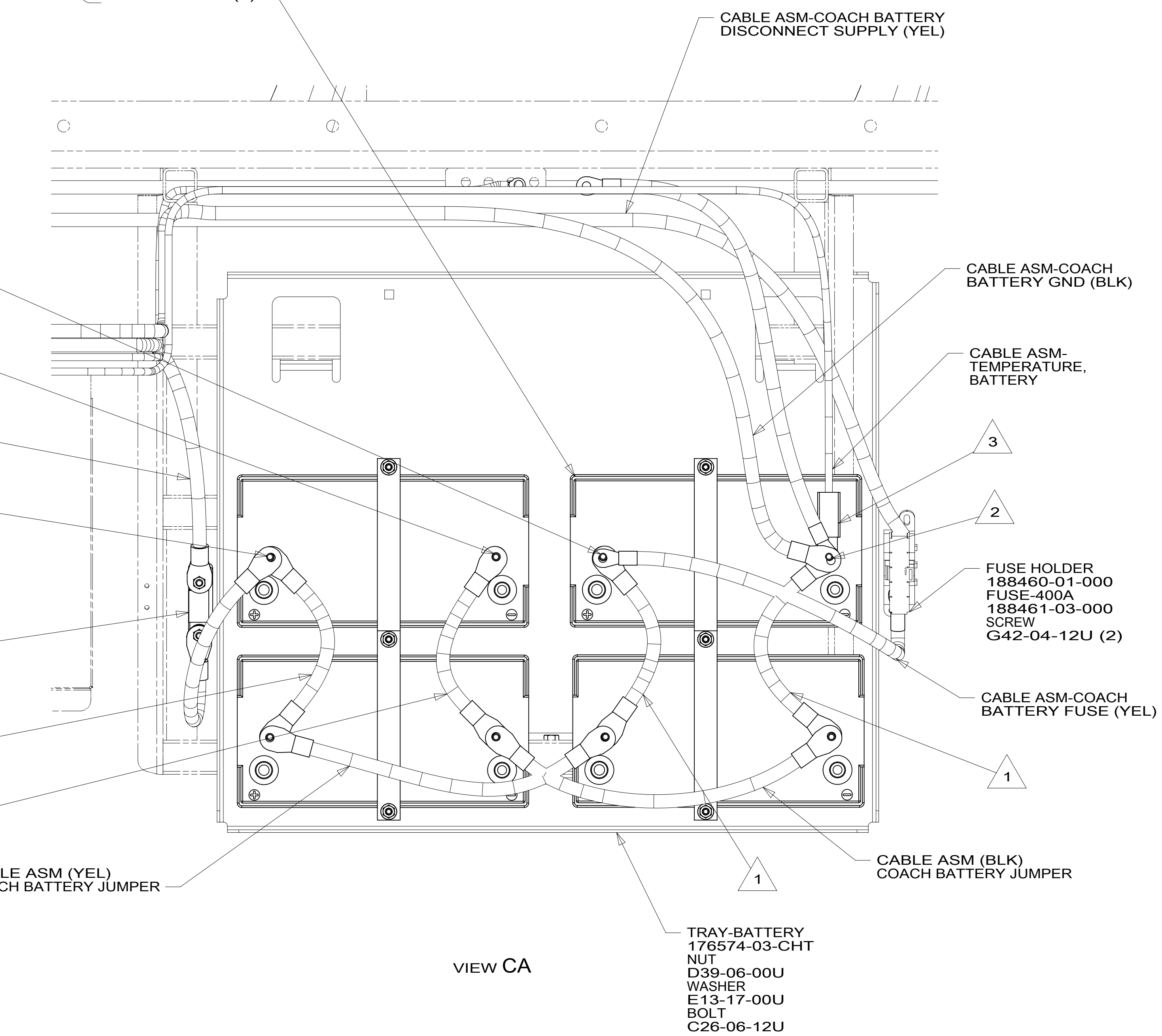
FOR ELECTRICAL
TORQUE
SPECIFICATIONS
SEE DWG NO.
128783-01-000

X-X
FOR
ELECTRICAL
CALLOUTS
SEE DWG NO.
121339-01-000

DESCRIPTION:		1B1 265	
BATTERY INSTL			
SHEET:	ITEM/PART NO:	REV	
2 OF 4	000002471 / 31200701000		



- 15L BATTERY-12V
063739-03-000 (4)
BOLT
51387-06-000 (6)
NUT-HEX
D39-05-00U (6)
WASHER-RUBBER
184541-01-CHT (6)
STRAP-BATTERY
TIE DOWN
138914-01-CHT (4)
- 79W BATTERY-12V
063739-03-000 (2)
BOLT
51387-06-000 (4)
NUT-HEX
D39-05-00U (4)
WASHER-RUBBER
184541-01-CHT (4)
STRAP-BATTERY
TIE DOWN
138914-01-CHT (2)



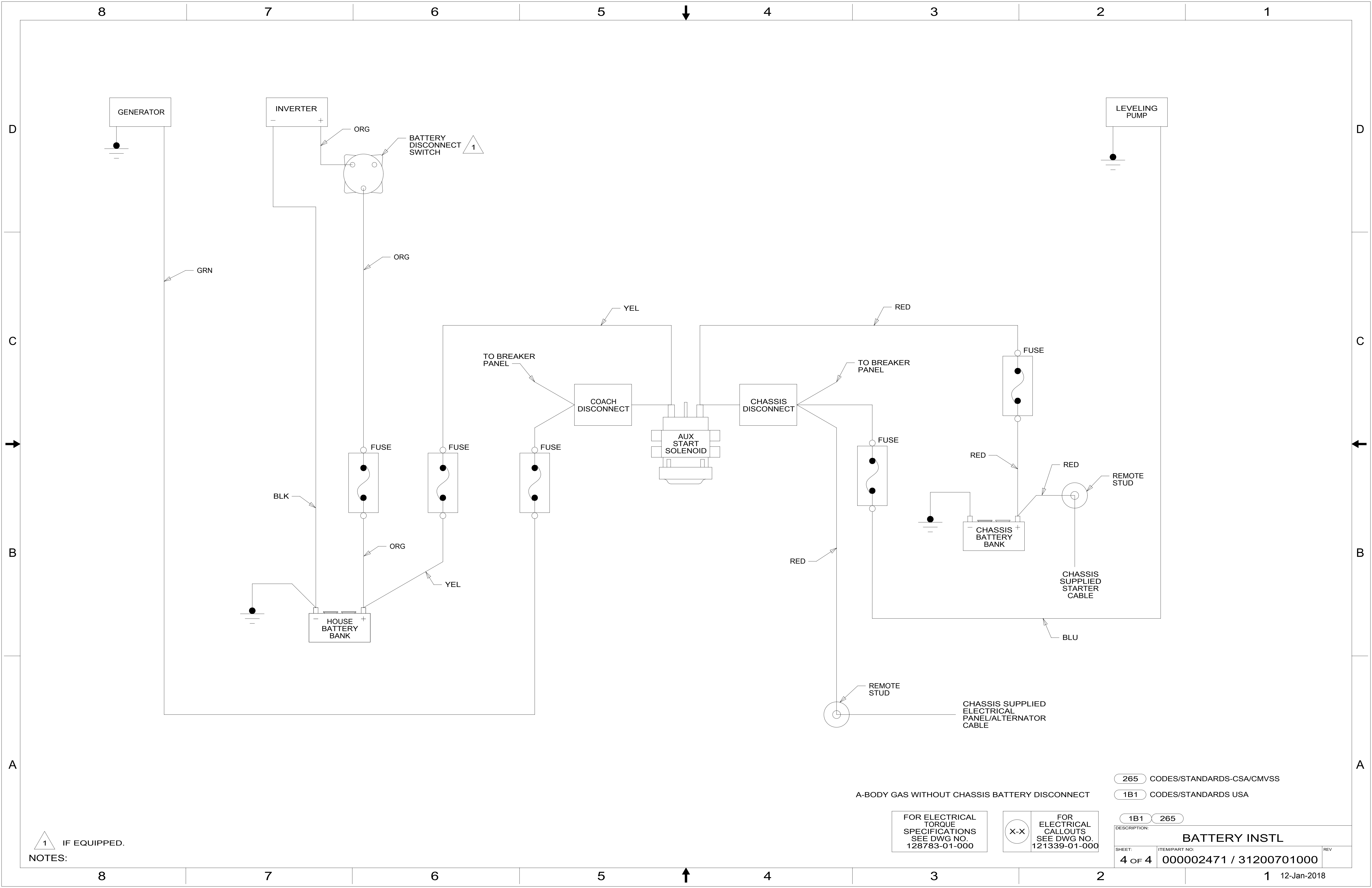
- NOTES:**
- 3 MOUNT INVERTER/CHARGER TEMPERATURE SENSOR ON THE BOTTOM OF THE BATTERY TERMINAL, BELOW THE OTHER BATTERY CABLE RING TERMINALS.
 - 2 CONNECT TO OUTER BATTERY WITH OPTION 79W OPTION 15L SHOWN.
 - 1 CABLE NOT USED WITH OPTION 79W

FOR ELECTRICAL TORQUE SPECIFICATIONS SEE DWG NO. 128783-01-000

FOR ELECTRICAL CALLOUTS SEE DWG NO. 121339-01-000

- 79W REFRIGERATOR-4 DOOR
- 15L RESIDENTIAL REFRIGERATOR PKG
- 265 CODES/STANDARDS-CSA/CMVSS
- 1B1 CODES/STANDARDS USA

DESCRIPTION:		1B1 265	
BATTERY INSTL			
SHEET:	ITEM/PART NO.:	REV:	
3 OF 4	000002471 / 31200701000		



NOTES:
 1 IF EQUIPPED.

A-BODY GAS WITHOUT CHASSIS BATTERY DISCONNECT

FOR ELECTRICAL TORQUE SPECIFICATIONS SEE DWG NO. 128783-01-000

FOR ELECTRICAL CALLOUTS SEE DWG NO. 121339-01-000

- 265 CODES/STANDARDS-CSA/CMVSS
- 1B1 CODES/STANDARDS USA

DESCRIPTION:		1B1 265	
BATTERY INSTL			
SHEET:	ITEM/PART NO.:	REV:	
4 OF 4	000002471 / 31200701000		