

DRAWING NO.	MODEL	SHEET
194488-01	524G	1, 2, 3
194488-02	524J	1, 2, 4, 6
194488-03	524V	1, 2, 5, 6

		524G	524J	524V	
RED	(IB1)	136135-07-050	136135-07-033	136135-07-045	
	(265)	136136-07-050	136136-07-033	136136-07-045	
YEL	(IB1)	136131-05-034	136131-05-019	136131-05-022	
	(265)	136134-05-034	136134-05-019	136134-05-022	
BLK	(IB1)	136135-06-066	136135-06-012	136135-06-012	
	(265)	136136-06-066	136136-06-012	136136-06-012	
BLK-2	(IB1)			136135-22-052	
	(265)			136136-22-052	
BRN	(IB1)	136131-03-045	136131-03-037	136131-03-038	(2)
	(265)	136134-03-045	136134-03-037	136134-03-038	(2)
BRN-2	(IB1)	136131-19-220 (2)	136131-19-150 (3)	136131-19-160 (2)	
	(265)	136134-19-220 (2)	136134-19-150 (3)	136134-19-160 (2)	
BLU	(IB1)	136131-02-190	136131-02-185	136131-02-225	
	(265)	136134-02-190	136134-02-185	136134-02-225	
WHT	(IB1)		136135-09-016	136135-09-028	
	(265)		136136-09-016	136136-09-028	
ORG	(IB1)	136131-16-042			
	(265)	136134-16-042			
MAIN	(IB1)	136137-01-035	136137-01-035	136137-01-042	
	(265)	136138-01-035	136138-01-035	136138-01-042	
THROW IN WIRE #1	(IB1)	136131-19-004	136131-05-014		(2)
	(265)	136134-19-004	136134-05-014		(2)
THROW IN WIRE #2	(IB1)			136131-19-017	
	(265)			136134-19-017	
THROW IN WIRE #3	(IB1)				
	(265)				
THROW IN WIRE #4	(IB1)	136131-03-006	136131-03-006	136131-03-006	(2)
	(265)	136134-03-006	136134-03-006	136134-03-006	(2)
THROW IN WIRE #5	(IB1)	136131-19-004	136131-19-004	136131-19-004	(2)
	(265)	136134-19-004	136134-19-004	136134-19-004	(2)
GENERATOR CABLE ASM	(IB1)	164957-02-042	164957-07-035	164957-02-042	(33F)
	(265)	164957-04-042	164957-08-035	164957-04-042	(33F)
GROUND		136145-02-030	136145-02-020	136145-02-015	

RELEASE	REV DATE	DWG NO	194488
REV ZONE	REVISION RECORD	DATE	DTG-018

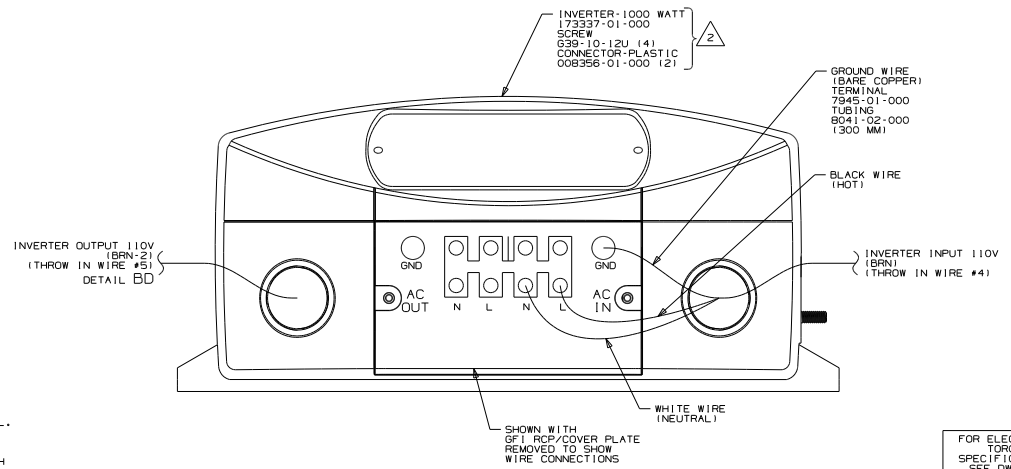
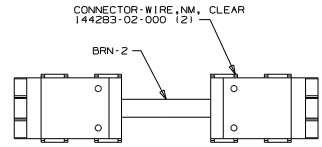
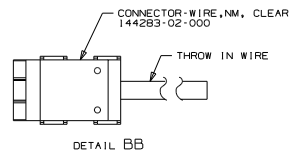
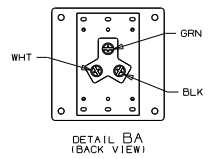
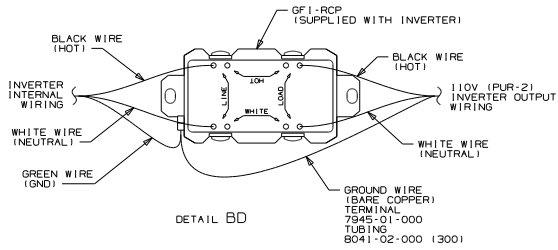
- (33F) GEN-3.5 KW ONAN DIESEL
- (265) CODES/STANDARDS-CSA/CMVSS
- (IB1) CODES/STANDARDS USA
- (IB1) (265)

WINNEBAGO		COPYRIGHT 2014 WINNEBAGO INDUSTRIES, INC.	
DTM	ORIG. DATE	ALL DIMENSIONS ARE IN MILLIMETERS	
DWR		FIRST DWG	
P.E.		17 500-SERIES	
M.F.			
CDR			
UNSPECIFIED TOLERANCES ARE:		MATERIAL	
WHOLE DIM (X)	+ .3	STEEL	
ONE-PLACE (X,X)	+ 1.5	ALUMINUM	
TWO-PLACE (X,X,X)	+ 0.50	COPPER	
ANGLE	+ .1"	ZINC PLATE	
THIRD ANGLE PROJECTION		REFER TO E50018 FOR FASTENER TIGHTENING GUIDELINES	
DO NOT SCALE DRAWING			
TITLE: LOAD CENTER/ATS ASM			
SHEET	OF 6	DWG NO	194488
REF:			

(3) FOR CONNECTOR INSTALLATION SEE DETAIL BC.
 (2) FOR CONNECTOR INSTALLATION SEE DETAIL BB.
 1. ALL GROUND WIRES TO BE COVERED WITH TUBING B041-02-000.

FOR ELECTRICAL TORQUE SPECIFICATIONS SEE DWG NO. 128783-01-000

(X-X) FOR ELECTRICAL CALLOUTS SEE DWG NO. 121339-01-000



INVERTER SUPPLIED WITH REMOTE PANEL. SEND PANEL TO MANUFACTURING LINE.

- 1. ALL GROUND WIRES TO BE COVERED WITH TUBING 8041-02-000.

NOTES:

FOR ELECTRICAL TORQUE SPECIFICATIONS SEE DWG NO. 128783-01-000

FOR ELECTRICAL CALLOUTS SEE DWG NO. 121339-01-000

265 CODES/STANDARDS - CSA/CMVSS

1B1 CODES/STANDARDS USA

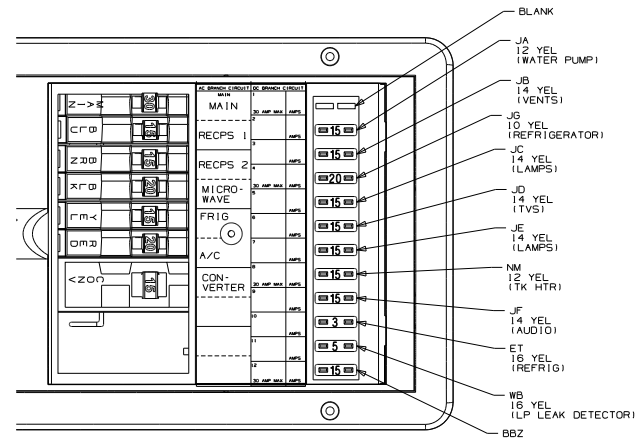
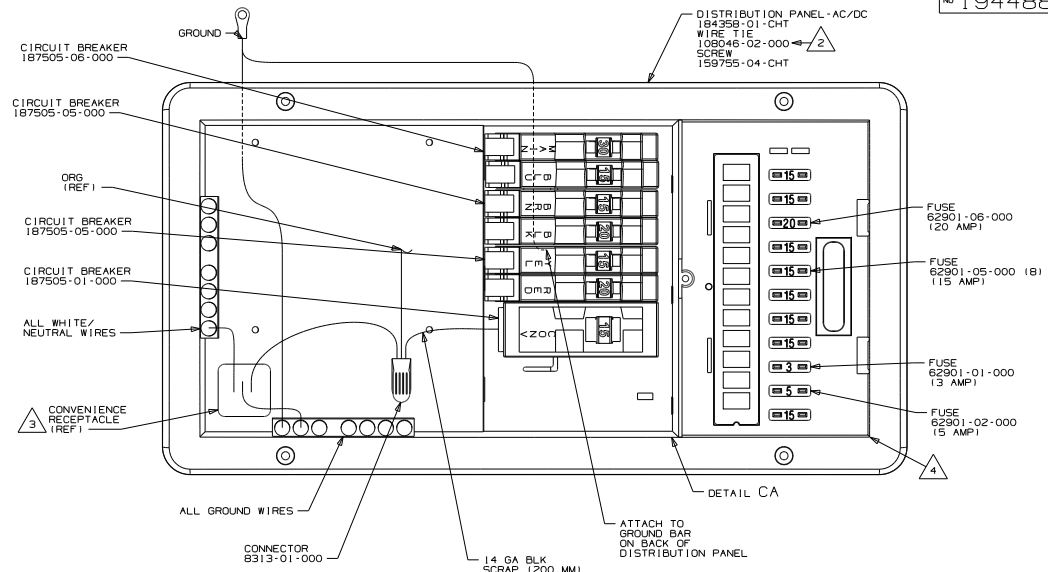
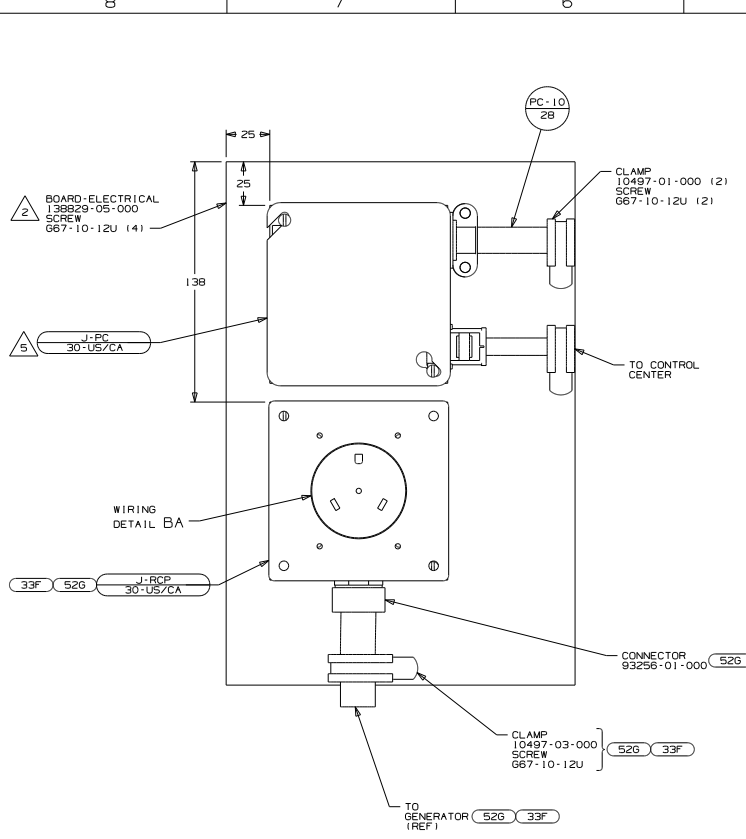
1B1 265

17 500-SERIES

DO NOT SCALE DRAWING

TITLE: LOAD CENTER/ATS ASM

SHEET 2 PART NO 194488 REV



- 5 CONNECT BLK TO BLK, WHT TO WHT, AND GRNDS TO GRNDS.
- 4 SEE WIRING INSTL-BODY, 12V FOR ADDITIONAL INFORMATION.
- 3 CONNECT BLACK WIRE FROM CONVENIENCE RECEPTACLE TO DEDICATED CIRCUIT BREAKER.
- 2 ATTACH TO UNUSED SCREW HOLE ON BACK SIDE OF PANEL TO SECURE WIRES.

1. ALL GROUND WIRES TO BE COVERED WITH TUBING B041-02-000.

- 33F GEN-3.5 KW ONAN DIESEL
- 52G GEN-3.6KW ONAN LP MICROUJET
- 265 CODES/STANDARDS-CSA/CMVSS
- 1B1 CODES/STANDARDS USA

17 500-SERIES
DO NOT SCALE DRAWING
LOAD CENTER/ATS ASM
194488

FOR ELECTRICAL TORQUE SPECIFICATIONS SEE DWG NO. 128783-01-000

FOR ELECTRICAL CALLOUTS SEE DWG NO. 121339-01-000



BOARD-ELECTRICAL
138829-05-000
SCREW
C56-10-12U (4)

J-PC
30-US/CA

PC-10
28

CLAMP
10497-01-000 (2)
SCREW
667-10-12U (2)

J-RCP
30-US/CA 33F 52G

CONNECTOR
93256-01-000 52G

CLAMP
10497-03-000
SCREW
667-10-12U } 33F 52G

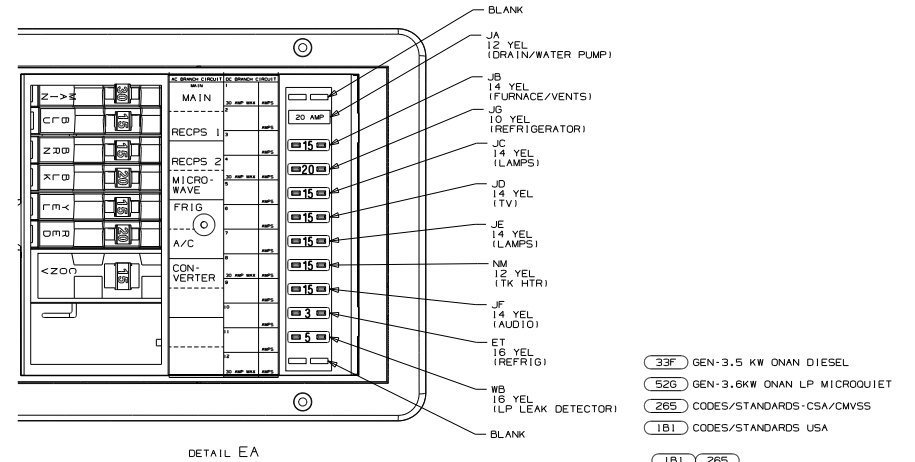
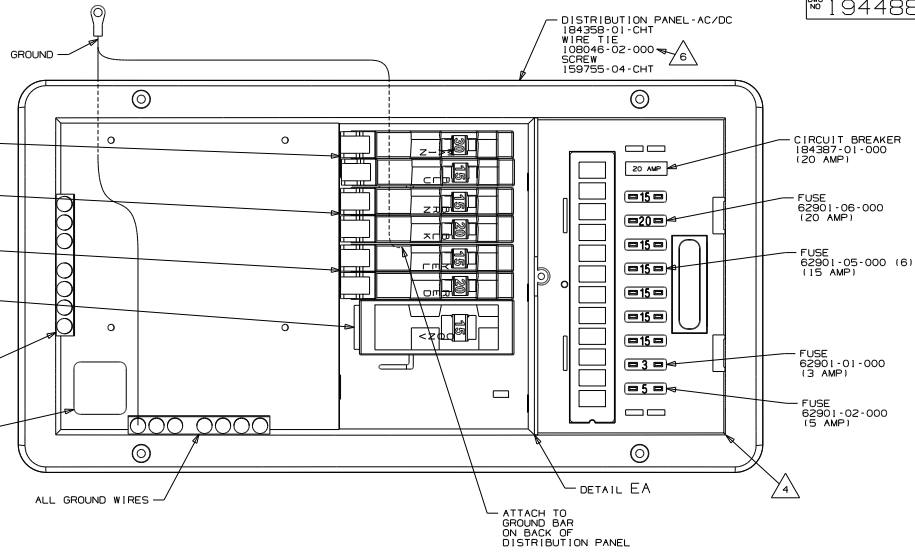
TO GENERATOR (REF) 33F 52G

WIRING
DETAIL BA

- 6 ATTACH TO UNUSED SCREW HOLE ON BACK SIDE OF PANEL TO SECURE WIRES.
- 5 CONNECT BLK TO BLK, WHT TO WHT, AND GRNDS TO GRNDS.
- 4 SEE WIRING INSTL-BODY, I2V FOR ADDITIONAL INFORMATION.
- 3 CONNECT BLACK WIRE FROM CONVENIENCE RECEPTACLE TO DEDICATED CIRCUIT BREAKER.
- 2 SCREW INTO BACKSIDE OF BOARD THRU PANEL DURING INSTALLATION.

NOTES:
1. ALL GROUND WIRES TO BE COVERED WITH TUBING 8041-02-000.

- CIRCUIT BREAKER
187505-06-000
- CIRCUIT BREAKER
187505-05-000
- CIRCUIT BREAKER
187505-05-000
- CIRCUIT BREAKER
187505-01-000
- ALL WHITE/
NEUTRAL WIRES
- CONVENIENCE RECEPTACLE
(REF)



- 33F GEN-3.5 KW ONAN DIESEL
- 52G GEN-3.6KW ONAN LP MICROQUIT
- 265 CODES/STANDARDS-CSA/CMVSS
- 1B1 CODES/STANDARDS USA

1B1 265

17 500-SERIES

DO NOT SCALE DRAWING

TITLE: LOAD CENTER/ATS ASM

SHEET 5 PART NO. 194488

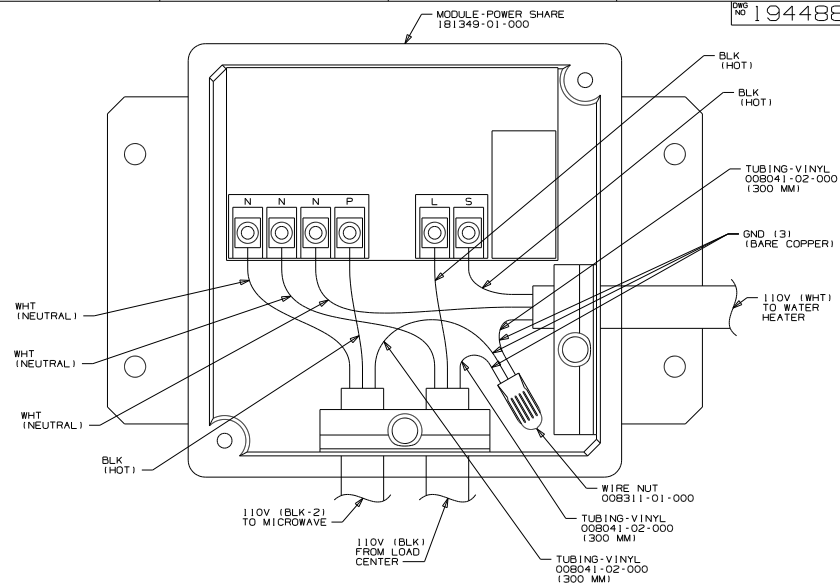
FOR ELECTRICAL
TORQUE
SPECIFICATIONS
SEE DWG NO.
128783-01-000

FOR
ELECTRICAL
CALLOUTS
SEE DWG NO.
121339-01-000

X-X

8 7 6 5 4 3 2 1

REV NO 194488



1. ALL GROUND WIRES TO BE COVERED WITH TUBING B041-02-000.

NOTES:

8 7 6 5 4 3 2 1

- 538 WTR HTR-66AL ELECTRIC/LP GAS
- 265 CODES/STANDARDS-CSA/CMVSS
- 1B1 CODES/STANDARDS USA

1B1 265 538

17 500-SERIES

DO NOT SCALE DRAWING

TITLE: LOAD CENTER/ATS ASM

SHEET 6 PART NO 194488 REV

FOR ELECTRICAL TORQUE SPECIFICATIONS SEE DWG NO. 128783-01-000

FOR ELECTRICAL CALLOUTS SEE DWG NO. 121339-01-000

