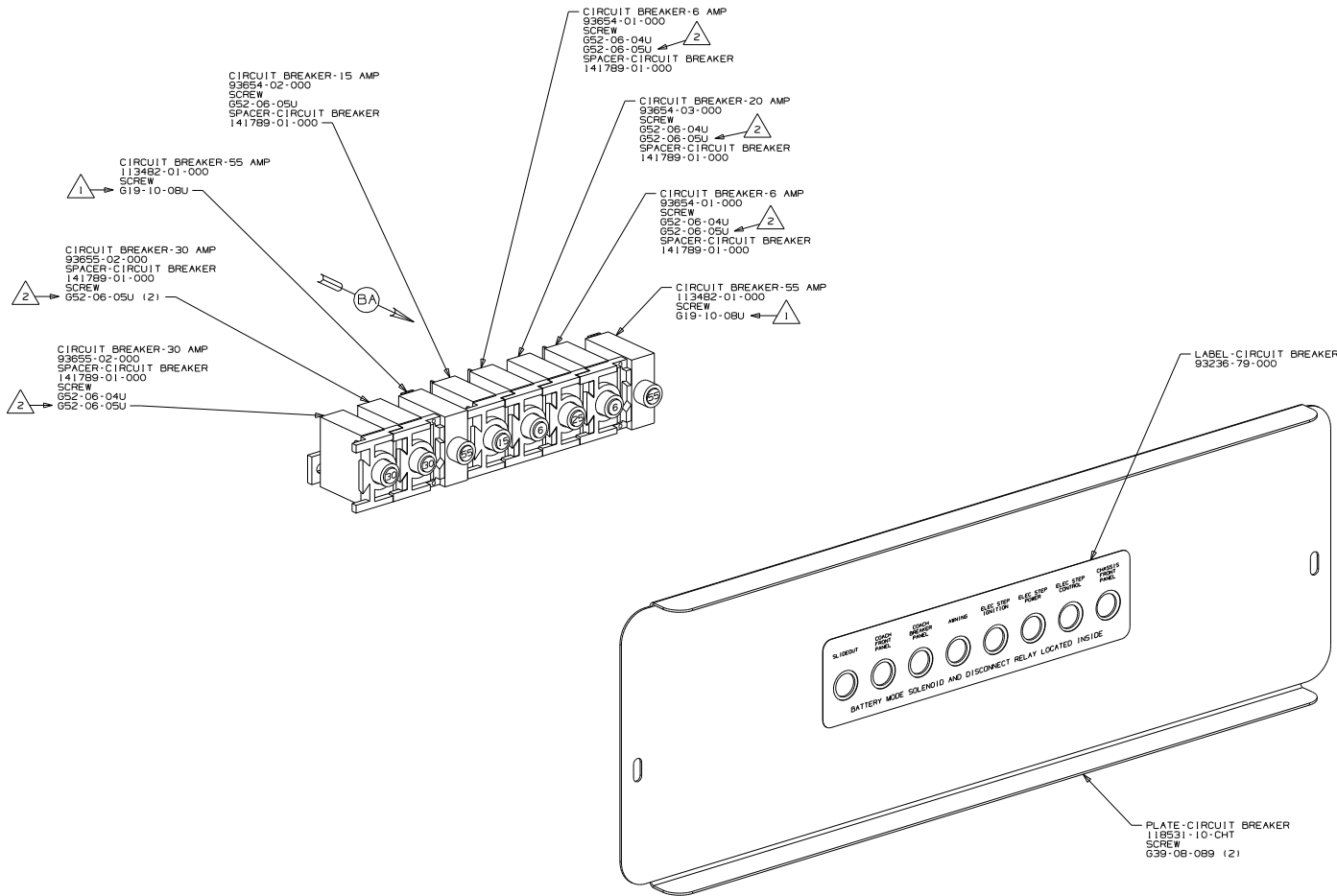


DRAWING NO.	MODEL	SHEET
194158-01	E29VE	1,2

REVISE	REV DATE	REV NO	194158



- (265) CODES/STANDARDS - CSA/CMVSS
- (181) CODES/STANDARDS USA
- (181) (265)

WINNERAFO COPYRIGHT 2014
WINNEBAGO INDUSTRIES, INC.

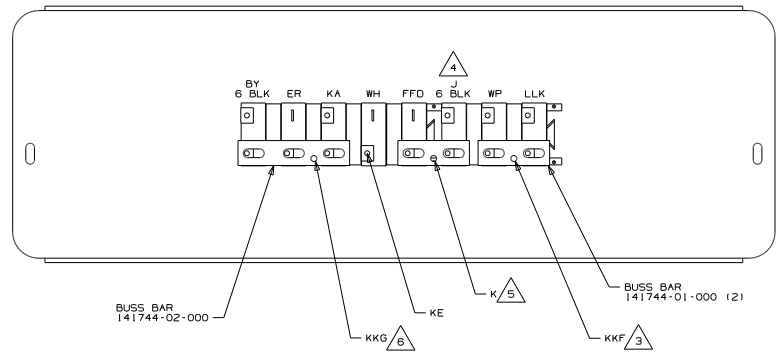
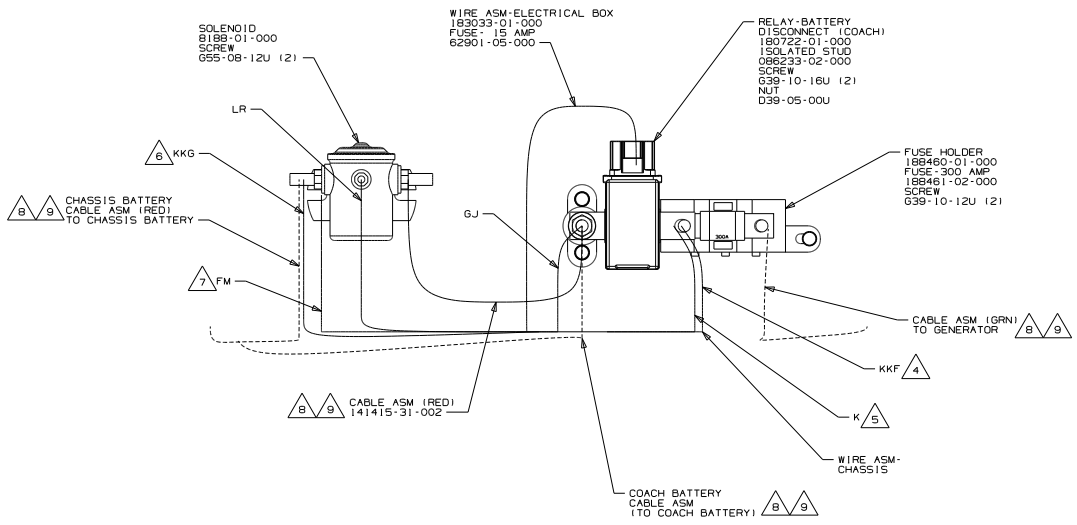
DWG NO. 194158

DWG	ORIG. DATE
CHW	ALL DIMENSIONS ARE IN MILLIMETERS
P.E.	FIRST DWG
M.E.	17 E-SERIES
CDR	

UNSPECIFIED TOLERANCES ARE:	MATERIAL
WHOLE DIM (X) + .3	
ONE-PLACE (X, X) + 1.5	
TWO-PLACE (X, X, X) + 0.50	
ANGLE + .1°	
THIRD ANGLE PROJECTION	

- NOTES:
- (2) USE THE LONGER SCREW TO PROPERLY ATTACH BREAKER TO BUSS BAR.
 - (1) REPLACE EXISTING SCREW TO PROPERLY ATTACH BREAKER TO BUSS BAR.

FOR ELECTRICAL TORQUE SPECIFICATIONS SEE DWG NO. 128783-01-000	(X-X)	FOR ELECTRICAL CALLOUTS SEE DWG NO. 121339-01-000
--	-------	---



DETAIL DA

- △ 9 SEE BATTERY INSTL FOR ADDITIONAL INFORMATION.
- △ 8 SEE WIRING INSTL-CHASSIS FOR ADDITIONAL INFORMATION.
- △ 7 SECURE WITH SOLENOID MOUNTING SCREW.
- △ 6 WIRE MARKED WITH RED TAPE.
- △ 5 WIRE MARKED WITH PURPLE TAPE.
- △ 4 WIRE MARKED WITH YELLOW TAPE.
- △ 3 WIRE MARKED WITH 2 WRAPS OF YELLOW TAPE.

2. SECURE CONDUIT 41953, TAB AS REQUIRED, OVER ALL WIRES IN CONTACT WITH SHARP EDGES.

1. LEGEND: _____ WINNEBAGO; - - - - - CABLE; - - - - - CHASSIS SUPPLIED WIRING.

NOTES:

265 CODES/STANDARDS - CSA/CMVSS
181 CODES/STANDARDS - IUSA

181 265

FIRST USED

17 E-SERIES

DO NOT SCALE DRAWING

TITLE: CHASSIS ELECTRICAL BOX ASM

SHEET 2 PART NO 194158 REV

FOR ELECTRICAL
TORQUE
SPECIFICATIONS
SEE DWG NO.
128783-01-000

FOR
ELECTRICAL
CALLOUTS
SEE DWG NO.
121339-01-000

