

DRAWING NO.	MODEL	SHEET
190306-01	D30A	1,2,3,6
190306-02	D33C	1,2,3,6
190306-03	D35G	1,2,3,6
190306-04	D36Z	1,4,5,6

RELEASE	REV/DATE	DWG NO	190306
REV ZONE	REVISION RECORD	DATE	DFT-ORIG

	D30A	D33C	D35G	D36Z
CABLE ASM-CHASSIS GND EXT (BLK)	133566-12-011	133566-12-042	133566-12-041	133566-12-011
CABLE ASM-CHASSIS BATTERY DISCONNECT SUPPLY (RED)	141415-32-019	141415-32-055	141415-32-037	141415-32-029
CABLE ASM-COACH BATTERY DISCONNECT SUPPLY (YEL)	141416-52-014	141416-52-050	141416-52-043	141416-52-039
CABLE ASM-COACH BATTERY GND (BLK)	133567-12-008	133567-12-008	133567-12-008	133567-12-006
CABLE ASM-CHASSIS BATTERY DISCONNECT RETURN (PUR)	141415-12-023	141415-12-026	141415-12-015	141415-12-027
CABLE ASM-GENERATOR (GRN)	141415-42-068	141415-42-085	141415-42-094	141415-42-107
LEVELING SYSTEM POWER CABLE (BLU)	60M 141415-22-048	141415-22-012	141415-22-038	141415-22-014
LEVELING SYSTEM GND CABLE (BLK)	60M 133566-12-008	133566-12-008	133566-12-008	133566-12-008
WIRE ASM-INVERTER	401 154845-02-053	154845-02-017	154845-02-005	
CABLE ASM-STARTER (RED)	141416-32-010	141416-32-041	141416-32-043	141416-32-011
CABLE ASM-COACH BATTERY FUSE	141416-52-003	141416-52-003	141416-52-003	141416-52-006
CABLE ASM-CHASSIS BATTERY FUSE	141415-32-003	141415-32-003	141415-32-003	141415-32-006
CABLE ASM (ORG) FROM COACH BATTERY TO INVERTER FUSE				175207-62-004
CABLE ASM (ORG) FROM INVERTER FUSE TO INVERTER BATT DISCONNECT				175207-62-016
CABLE ASM (ORG) FROM BATTERY DISCONNECT TO POSITIVE POST ON INVERTER				175207-62-007
CABLE ASM (BLK) FROM COACH BATTERY TO INVERTER NEGATIVE TERMINAL				175211-01-018
CABLE ASM-TEMPERATURE				1
CABLE ASM (YEL) JUMPER BETWEEN POSITIVE POSTS ON COACH BATTERY				141417-52-004 141417-51-002 (2) ← 15L
CABLE ASM (BLK) JUMPER BETWEEN NEGATIVE POSTS ON COACH BATTERY				133568-12-004 133568-11-002 (2) ← 15L
CABLE ASM-INVERTER GROUND (GRN)				136145-01-021

- 15L RESIDENTIAL REFRIGERATOR PKG
- 60M HYDRAULIC LEVEL JACKS-AUTO
- 401 INVERTER-DC/AC, 1000 WATT
- 265 CODES/STANDARDS-CSA/CMVSS
- 1B1 CODES/STANDARDS USA

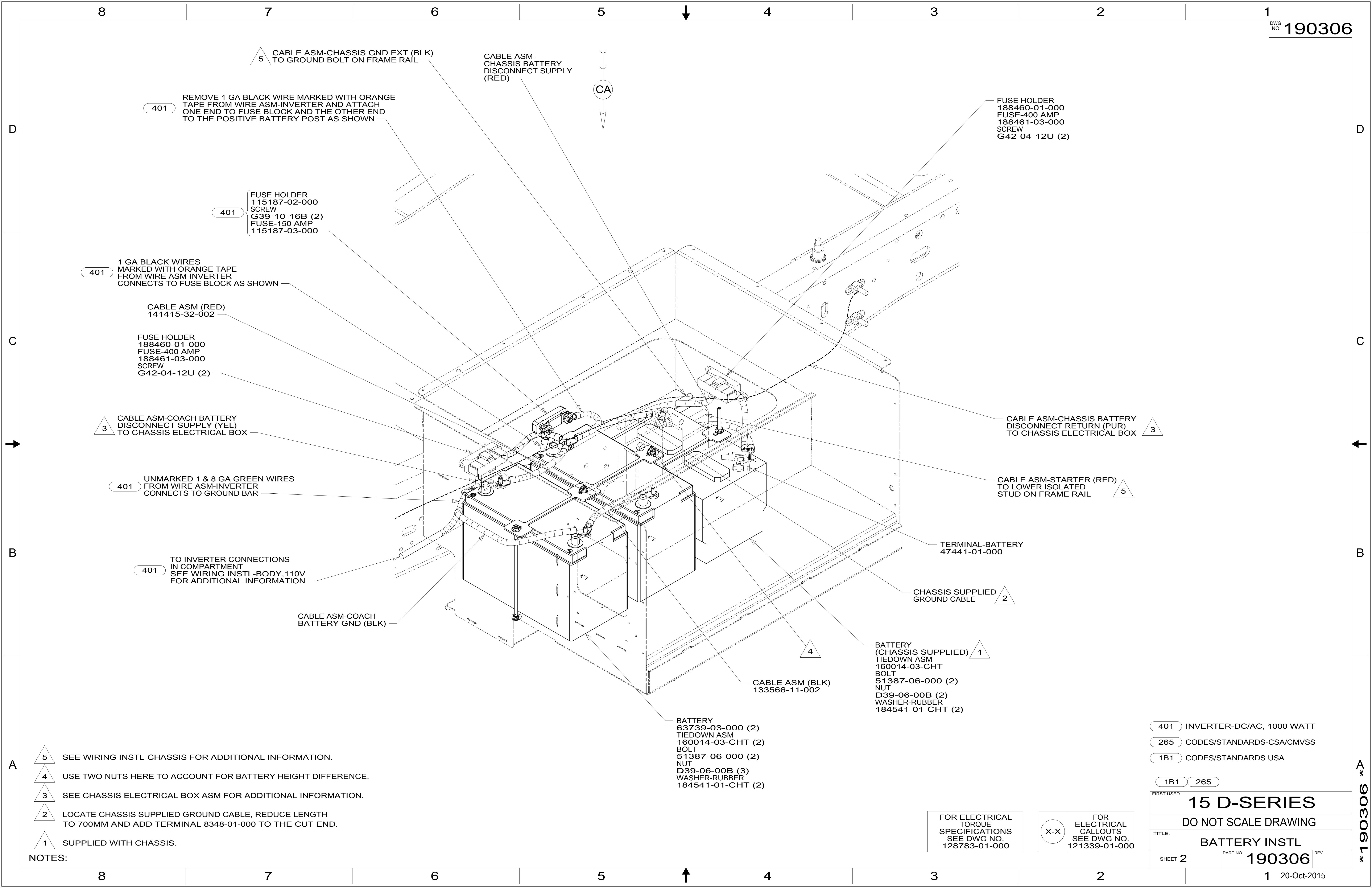
WINNEBAGO		COPYRIGHT 2014 WINNEBAGO INDUSTRIES, INC.	
DFT-ORIG	ORIG. DATE	ALL DIMENSIONS ARE IN MILLIMETERS	
CHKR		FIRST USED	
P.E.		15 D-SERIES	
M.E.		MATERIAL:	
DSNR		UNSPECIFIED TOLERANCES ARE:	
		WHOLE DIM (X)	: 3
		ONE-PLACE (X.X)	: 1.5
		TWO-PLACE (X.XX)	: 0.50
		ANGLE	: 1°
THIRD ANGLE PROJECTION		DO NOT SCALE DRAWING REFER TO ES0018 FOR FASTENER TIGHTENING GUIDELINES	
TITLE: BATTERY INSTL			
SHEET 1 OF 6	PART NO 190306	REV	
REF:	1	20-Oct-2015	

NOTES:
 1 CABLE ASM-TEMPERATURE IS PART OF WIRE ASM-CHASSIS.

FOR ELECTRICAL TORQUE SPECIFICATIONS SEE DWG NO. 128783-01-000

FOR ELECTRICAL CALLOUTS SEE DWG NO. 121339-01-000

190306



5 CABLE ASM-CHASSIS GND EXT (BLK) TO GROUND BOLT ON FRAME RAIL

401 REMOVE 1 GA BLACK WIRE MARKED WITH ORANGE TAPE FROM WIRE ASM-INVERTER AND ATTACH ONE END TO FUSE BLOCK AND THE OTHER END TO THE POSITIVE BATTERY POST AS SHOWN

401 FUSE HOLDER 115187-02-000 SCREW G39-10-16B (2) FUSE-150 AMP 115187-03-000

401 1 GA BLACK WIRES MARKED WITH ORANGE TAPE FROM WIRE ASM-INVERTER CONNECTS TO FUSE BLOCK AS SHOWN

CABLE ASM (RED) 141415-32-002

FUSE HOLDER 188460-01-000 FUSE-400 AMP 188461-03-000 SCREW G42-04-12U (2)

3 CABLE ASM-COACH BATTERY DISCONNECT SUPPLY (YEL) TO CHASSIS ELECTRICAL BOX

401 UNMARKED 1 & 8 GA GREEN WIRES FROM WIRE ASM-INVERTER CONNECTS TO GROUND BAR

401 TO INVERTER CONNECTIONS IN COMPARTMENT SEE WIRING INSTL-BODY, 110V FOR ADDITIONAL INFORMATION

CABLE ASM-COACH BATTERY GND (BLK)

401 FUSE HOLDER 188460-01-000 FUSE-400 AMP 188461-03-000 SCREW G42-04-12U (2)

3 CABLE ASM-CHASSIS BATTERY DISCONNECT RETURN (PUR) TO CHASSIS ELECTRICAL BOX

5 CABLE ASM-STARTER (RED) TO LOWER ISOLATED STUD ON FRAME RAIL

401 TERMINAL-BATTERY 47441-01-000

2 CHASSIS SUPPLIED GROUND CABLE

4 BATTERY (CHASSIS SUPPLIED) TIEDOWN ASM 160014-03-CHT BOLT 51387-06-000 (2) NUT D39-06-00B (2) WASHER-RUBBER 184541-01-CHT (2)

4 CABLE ASM (BLK) 133566-11-002

1 BATTERY 63739-03-000 (2) TIEDOWN ASM 160014-03-CHT (2) BOLT 51387-06-000 (2) NUT D39-06-00B (3) WASHER-RUBBER 184541-01-CHT (2)

- 5 SEE WIRING INSTL-CHASSIS FOR ADDITIONAL INFORMATION.
- 4 USE TWO NUTS HERE TO ACCOUNT FOR BATTERY HEIGHT DIFFERENCE.
- 3 SEE CHASSIS ELECTRICAL BOX ASM FOR ADDITIONAL INFORMATION.
- 2 LOCATE CHASSIS SUPPLIED GROUND CABLE, REDUCE LENGTH TO 700MM AND ADD TERMINAL 8348-01-000 TO THE CUT END.
- 1 SUPPLIED WITH CHASSIS.

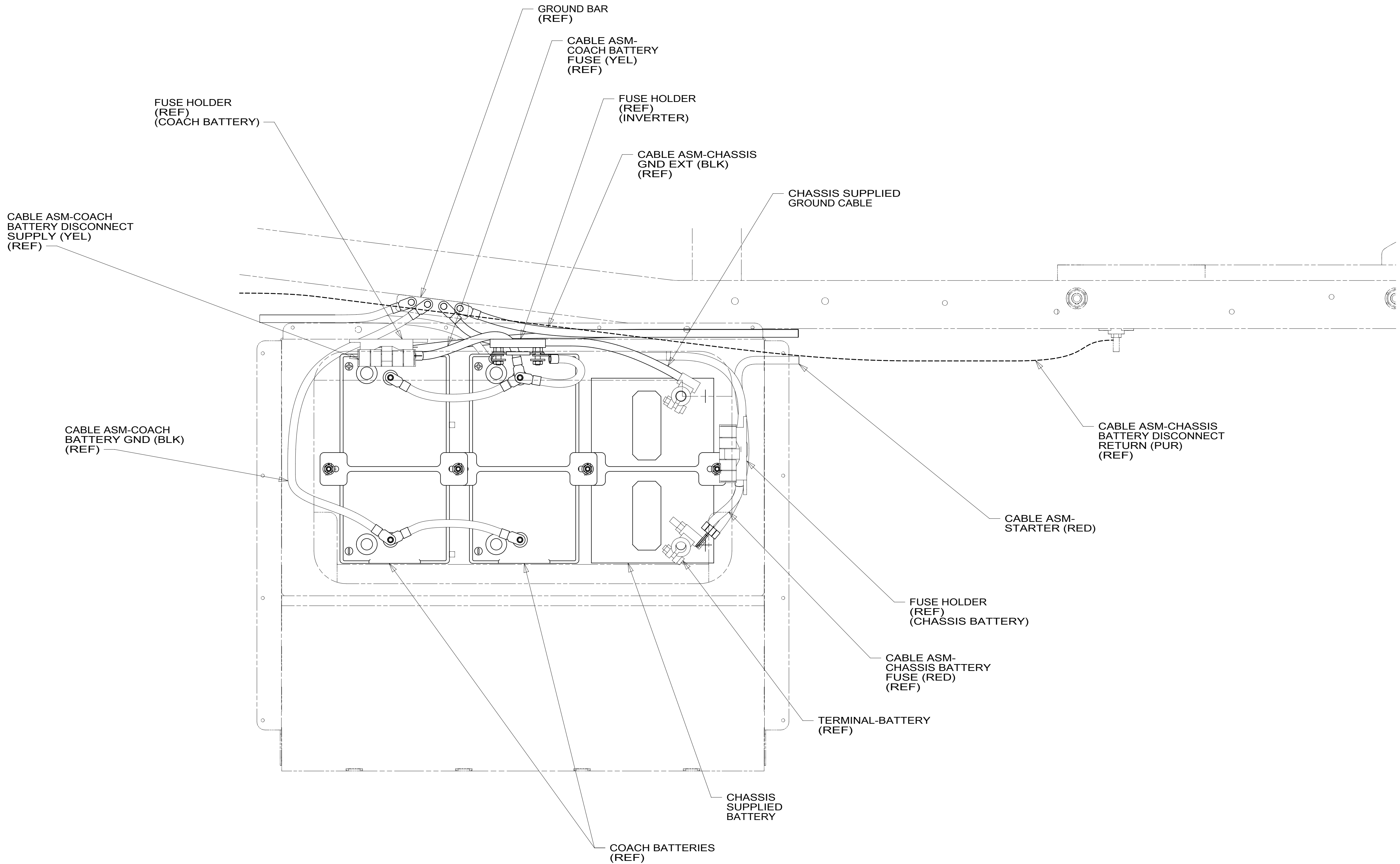
- 401 INVERTER-DC/AC, 1000 WATT
- 265 CODES/STANDARDS-CSA/CMVSS
- 1B1 CODES/STANDARDS USA

FIRST USED	
15 D-SERIES	
DO NOT SCALE DRAWING	
TITLE: BATTERY INSTL	
SHEET 2	PART NO 190306 REV
1 20-Oct-2015	

FOR ELECTRICAL TORQUE SPECIFICATIONS SEE DWG NO. 128783-01-000

FOR ELECTRICAL CALLOUTS SEE DWG NO. 121339-01-000

190306 A



VIEW CA

265 CODES/STANDARDS-CSA/CMVSS

1B1 CODES/STANDARDS USA

1B1 265

FIRST USED **15 D-SERIES**

DO NOT SCALE DRAWING

TITLE: **BATTERY INSTL**

SHEET 3 PART NO **190306** REV

FOR ELECTRICAL TORQUE SPECIFICATIONS SEE DWG NO. 128783-01-000

X-X FOR ELECTRICAL CALLOUTS SEE DWG NO. 121339-01-000

190306 A

8

7

6

5

4

3

2

1

D

D

C

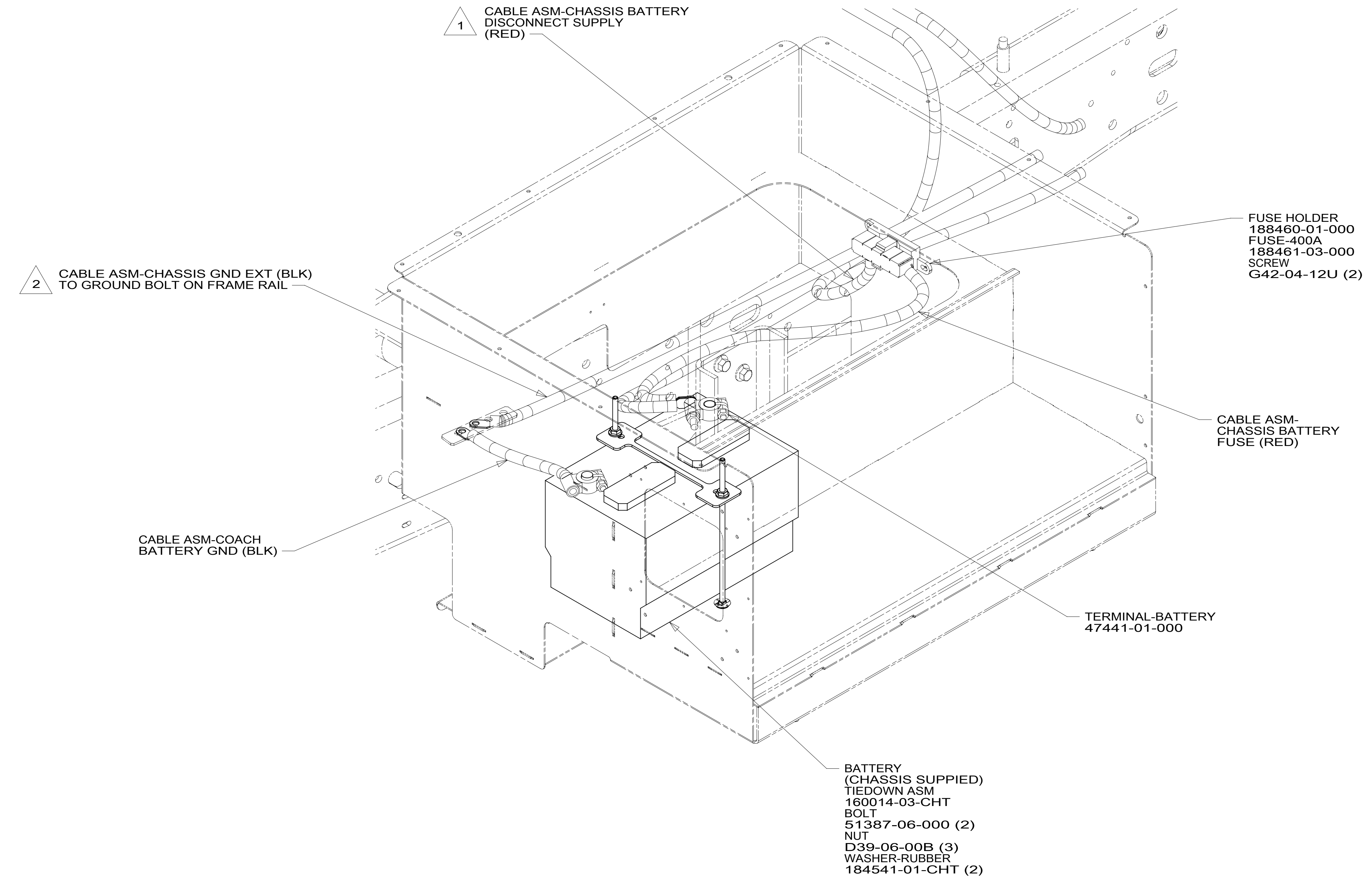
C

B

B

A

A



- 2 SEE WIRING INSTL-CHASSIS FOR ADDITIONAL INFORMATION.
- 1 SEE CHASSIS ELECTRICAL BOX ASM FOR ADDITIONAL INFORMATION.

NOTES:

FOR ELECTRICAL TORQUE SPECIFICATIONS SEE DWG NO. 128783-01-000

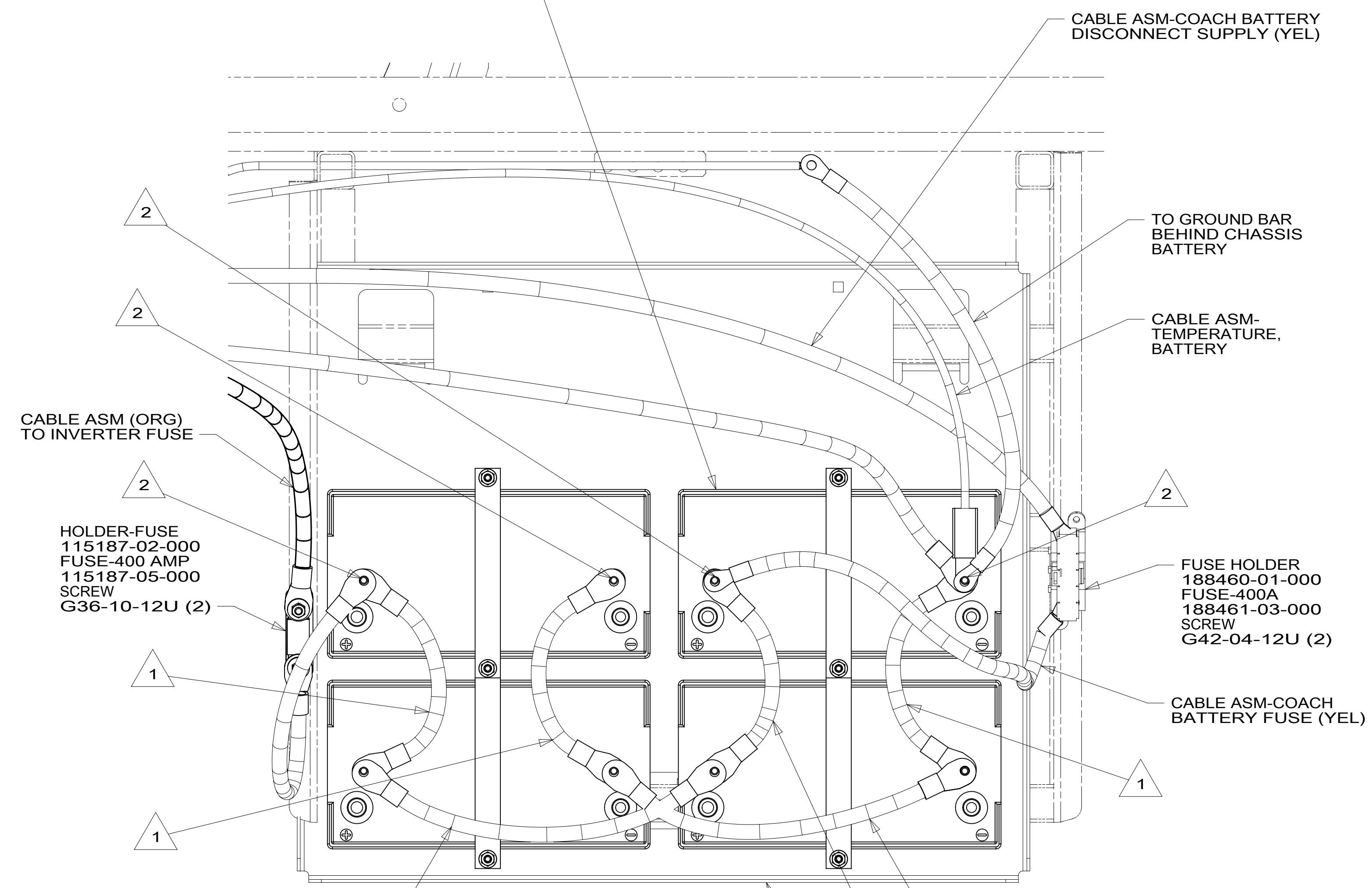
FOR ELECTRICAL CALLOUTS SEE DWG NO. 121339-01-000

- 265 CODES/STANDARDS-CSA/CMVSS
- 1B1 CODES/STANDARDS USA
- 1B1 265

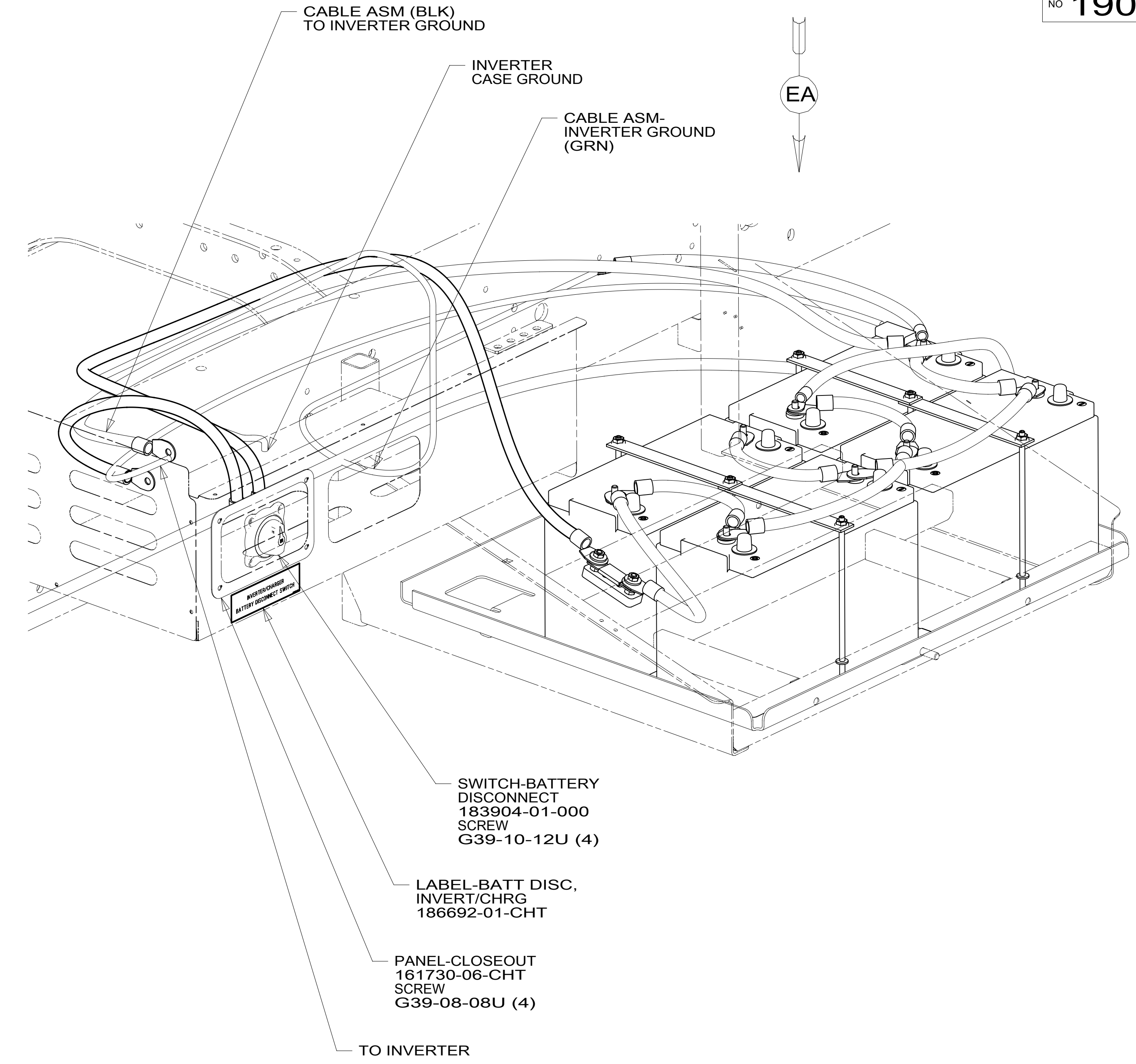
FIRST USED	
15 D-SERIES	
DO NOT SCALE DRAWING	
TITLE: BATTERY INSTL	
SHEET 4	PART NO 190306 REV

190306

- 15L BATTERY-12V
063739-03-000 (4)
BOLT
51387-06-000 (6)
NUT-HEX
D39-05-00U (6)
WASHER-RUBBER
184541-01-CHT (6)
STRAP-BATTERY
TIE DOWN
138914-01-CHT (4)
- 145 BATTERY-12V
063739-03-000 (2)
BOLT
51387-06-000 (4)
NUT-HEX
D39-05-00U (4)
WASHER-RUBBER
184541-01-CHT (4)
STRAP-BATTERY
TIE DOWN
138914-01-CHT (2)



VIEW EA



- NOTES:
- 2 CONNECT TO OUTER BATTERY WITH OPTION 145 OPTION 15L SHOWN.
 - 1 CABLE NOT USED WITH OPTION 145

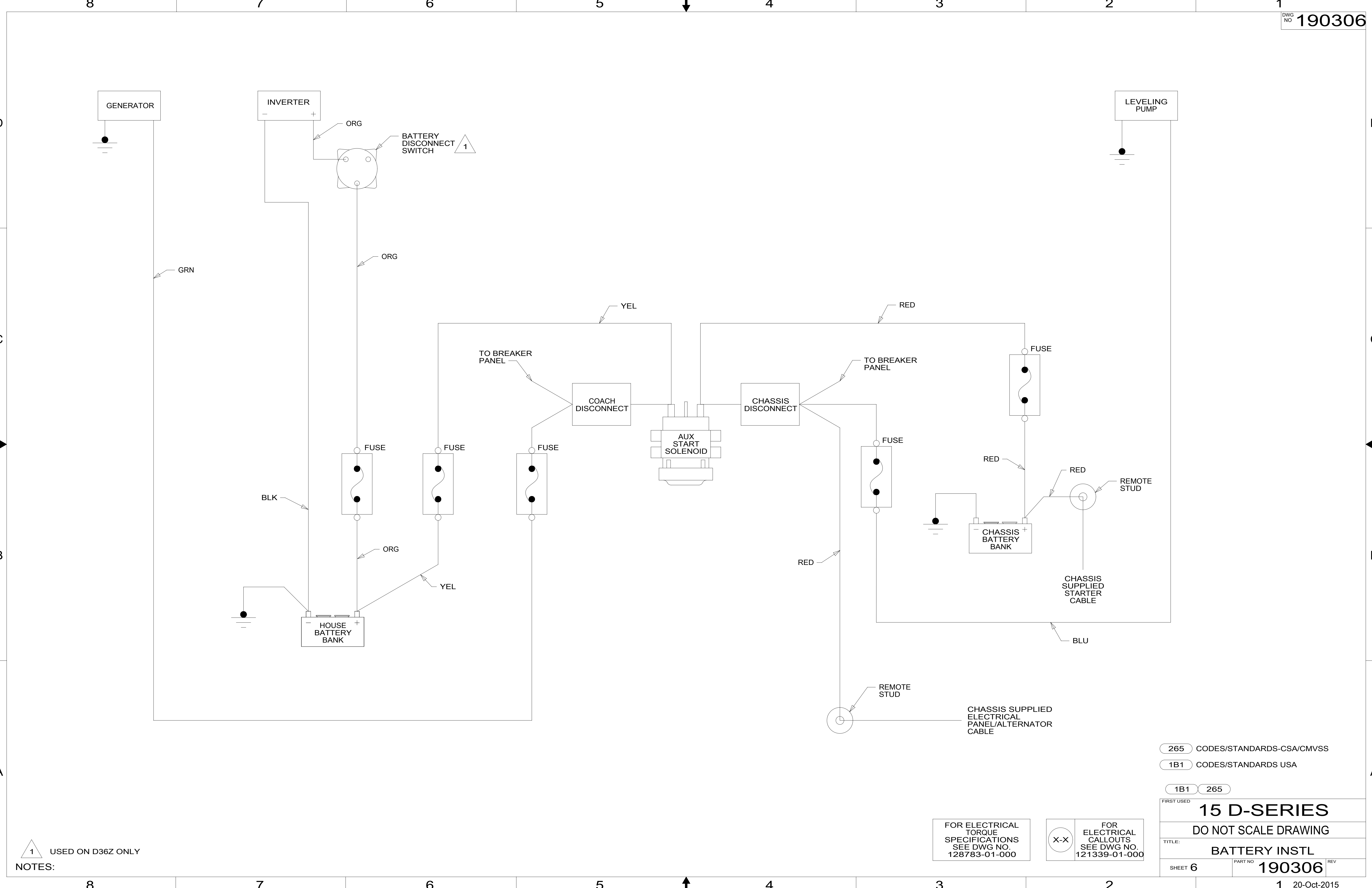
- 145 REFR-EXTRA CAP W/ICEMAKER
- 15L RESIDENTIAL REFRIGERATOR PKG
- 265 CODES/STANDARDS-CSA/CMVSS
- 1B1 CODES/STANDARDS USA

FIRST USED	
15 D-SERIES	
DO NOT SCALE DRAWING	
TITLE: BATTERY INSTL	
SHEET 5	PART NO 190306 REV
1 20-Oct-2015	

FOR ELECTRICAL TORQUE SPECIFICATIONS SEE DWG NO. 128783-01-000

FOR ELECTRICAL CALLOUTS SEE DWG NO. 121339-01-000

190306 A



1 USED ON D36Z ONLY
 NOTES:

FOR ELECTRICAL TORQUE SPECIFICATIONS SEE DWG NO. 128783-01-000

FOR ELECTRICAL CALLOUTS SEE DWG NO. 121339-01-000

265 CODES/STANDARDS-CSA/CMVSS

1B1 CODES/STANDARDS USA

1B1 265

FIRST USED **15 D-SERIES**

DO NOT SCALE DRAWING

TITLE: **BATTERY INSTL**

SHEET 6 PART NO **190306** REV

* 190306 A *