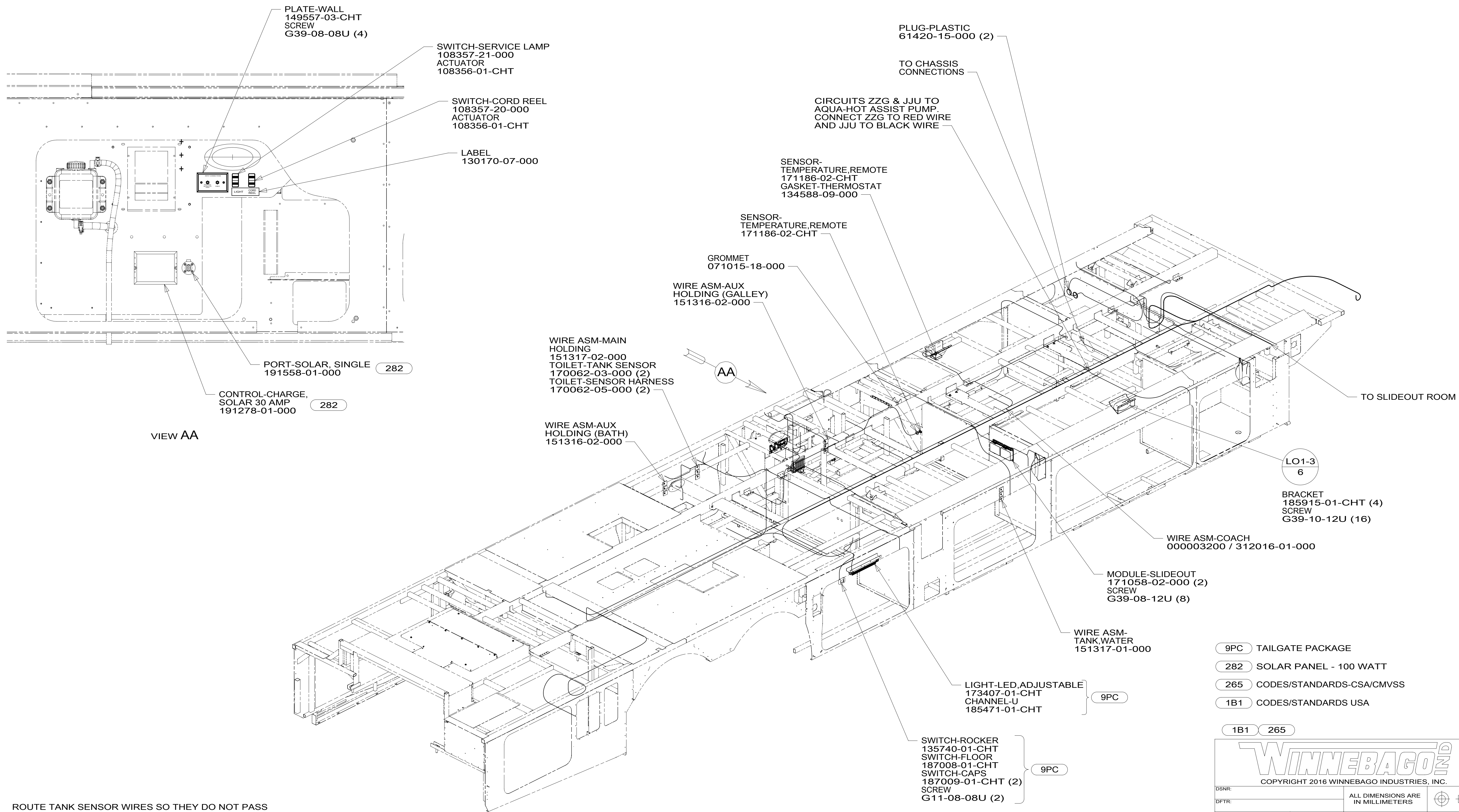


8 7 6 5 4 3 2 1



2. ROUTE TANK SENSOR WIRES SO THEY DO NOT PASS OVER SENSORS. USE WIRE TIE MOUNT 155366-01-000 AND WIRE TIE 8343-01-000 AS NEEDED. TANK SURFACE MUST BE CLEANED USING ISOPROPYL ALCOHOL AND PRIMED WITH PRIMER 94.
1. AT MINIMUM ALL WIRES TO BE SUPPORTED AND SECURED PER CODE REQUIREMENTS. USE CLAMP 10495 OR 10497 OR WIRE TIE 8343 OR 108046 AND SCREW G67-XX-XXX OR G56-XX-XXX AS APPROPRIATE FOR INSTALLATION.

NOTES:

FOR ELECTRICAL TORQUE SPECIFICATIONS SEE DWG NO. 128783-01-000

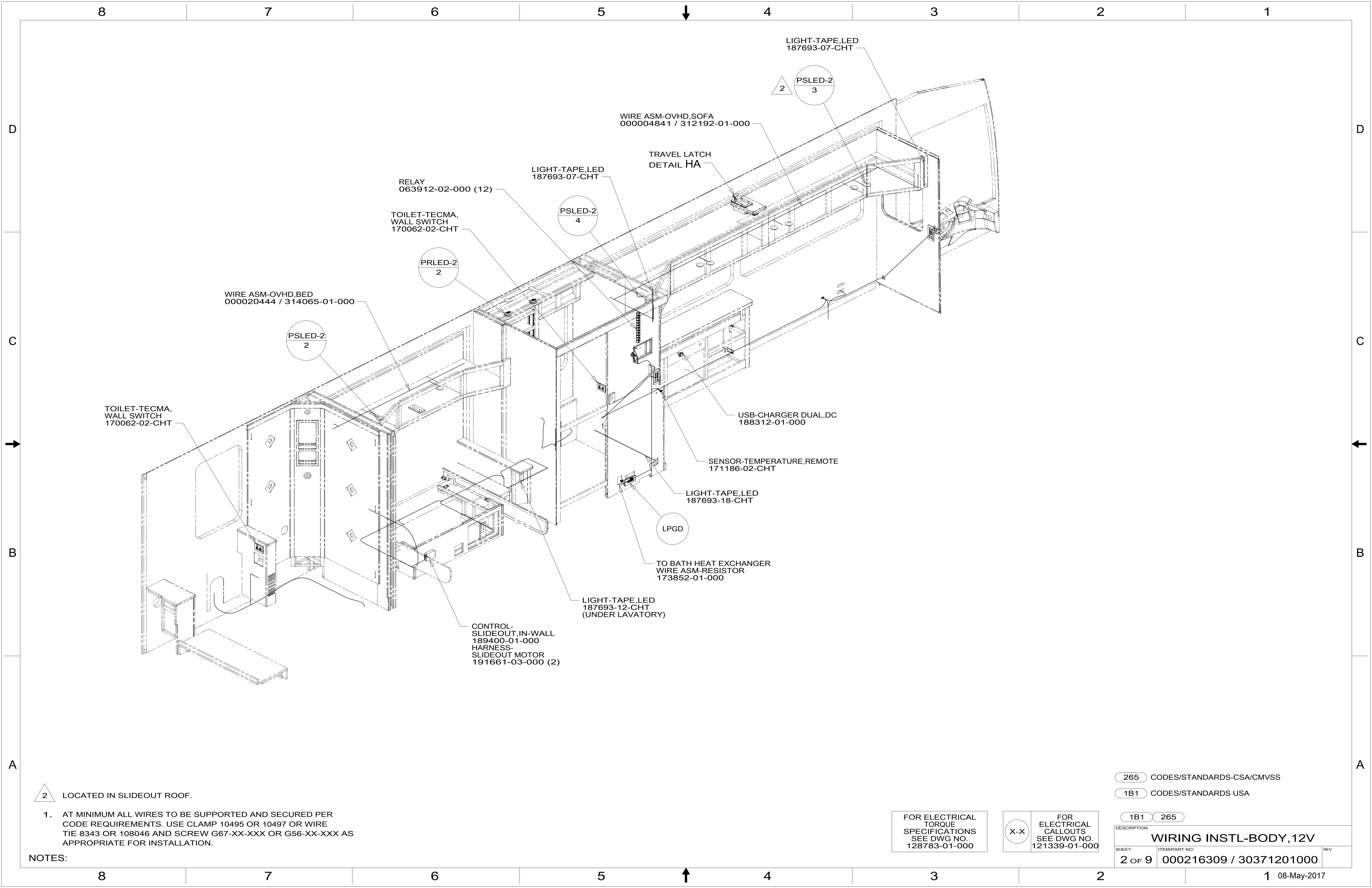
FOR ELECTRICAL CALLOUTS SEE DWG NO. 121339-01-000

- 9PC TAILGATE PACKAGE
- 282 SOLAR PANEL - 100 WATT
- 265 CODES/STANDARDS-CSA/CMVSS
- 1B1 CODES/STANDARDS USA
- 1B1 265

**WINNEBAGO**  
COPYRIGHT 2016 WINNEBAGO INDUSTRIES, INC.

DSNR:	ALL DIMENSIONS ARE IN MILLIMETERS
DFFR:	MATERIAL:
UNSPECIFIED TOLERANCES:	
WHOLE DIM (X) :	3
ONE-PLACE (X.X) :	1.5
TWO-PLACE (X.XX) :	0.50
ANGLE :	1°
REFER TO ES0018 FOR FASTENER TIGHTENING GUIDELINES	WEIGHT: (LBS) FIRST USED: <b>16 R45RL</b>
DESCRIPTION: <b>WIRING INSTL-BODY, 12V</b>	
SHEET: <b>1 OF 9</b>	ITEM/PART NO: <b>000216309 / 30371201000</b>

8 7 6 5 4 3 2 1



2 LOCATED IN SLIDEOUT ROOF.

1. AT MINIMUM ALL WIRES TO BE SUPPORTED AND SECURED PER CODE REQUIREMENTS. USE CLAMP 10495 OR 10497 OR WIRE TIE 8343 OR 108046 AND SCREW G67-XX-XXX OR G56-XX-XXX AS APPROPRIATE FOR INSTALLATION.

NOTES:

265 CODES/STANDARDS-CSA/CMVSS

1B1 CODES/STANDARDS USA

1B1 265

FOR ELECTRICAL TORQUE SPECIFICATIONS SEE DWG NO. 128783-01-000

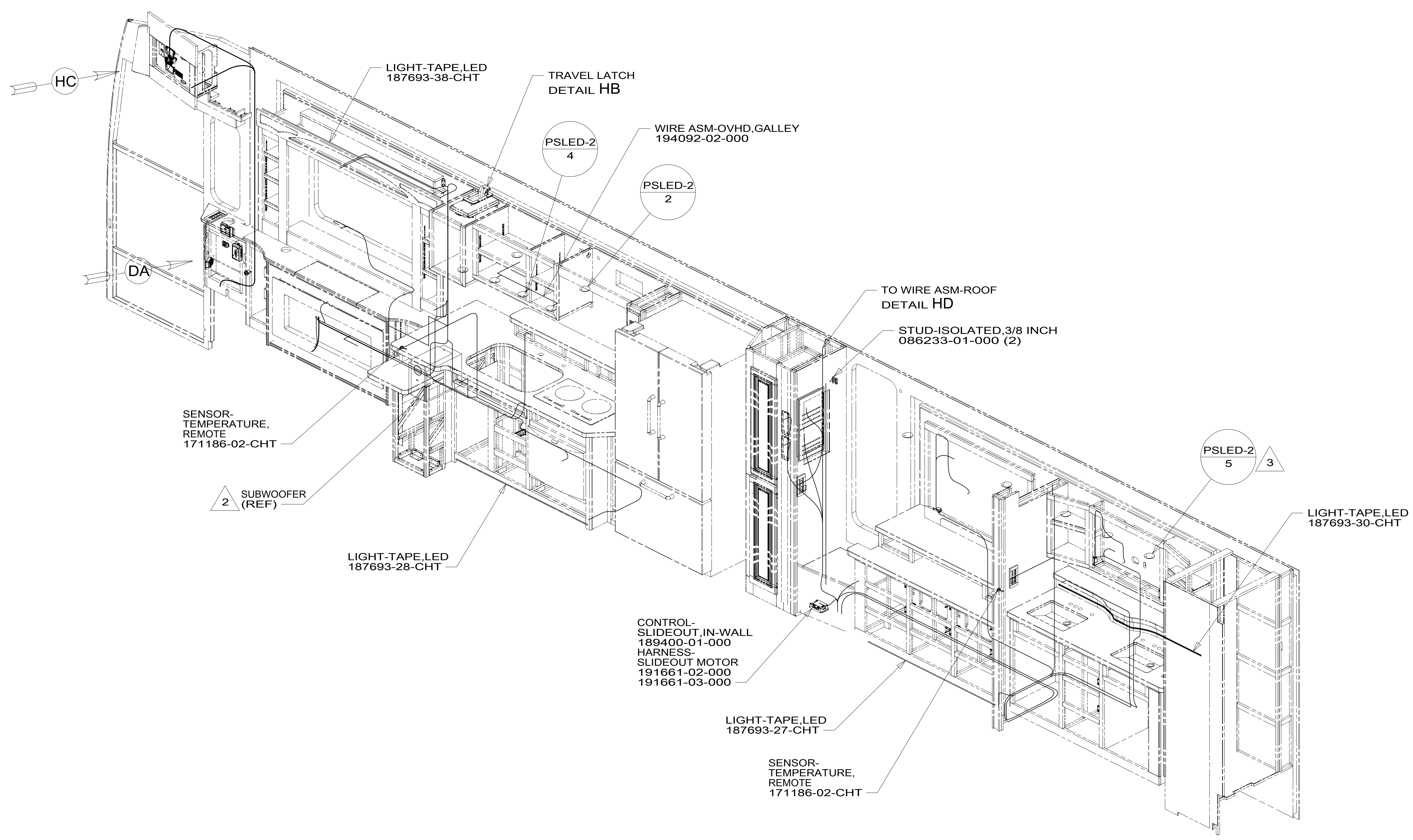
FOR ELECTRICAL CALLOUTS SEE DWG NO. 121339-01-000

DESCRIPTION:  
**WIRING INSTL-BODY, 12V**

SHEET: 2 OF 9 ITEM/PART NO.: 000216309 / 30371201000 REV

8 7 6 5 4 3 2 1

D  
C  
B  
A



- 3 LOCATED IN SLIDEOUT ROOF.
- 2 SEE WIRING INSTL-TV/DVD FOR ADDITIONAL INFORMATION.
1. AT MINIMUM ALL WIRES TO BE SUPPORTED AND SECURED PER CODE REQUIREMENTS. USE CLAMP 10495 OR 10497 OR WIRE TIE 8343 OR 108046 AND SCREW G67-XX-XXX OR G56-XX-XXX AS APPROPRIATE FOR INSTALLATION.

NOTES:

265 CODES/STANDARDS-CSA/CMVSS  
1B1 CODES/STANDARDS USA

FOR ELECTRICAL TORQUE SPECIFICATIONS SEE DWG NO. 128783-01-000

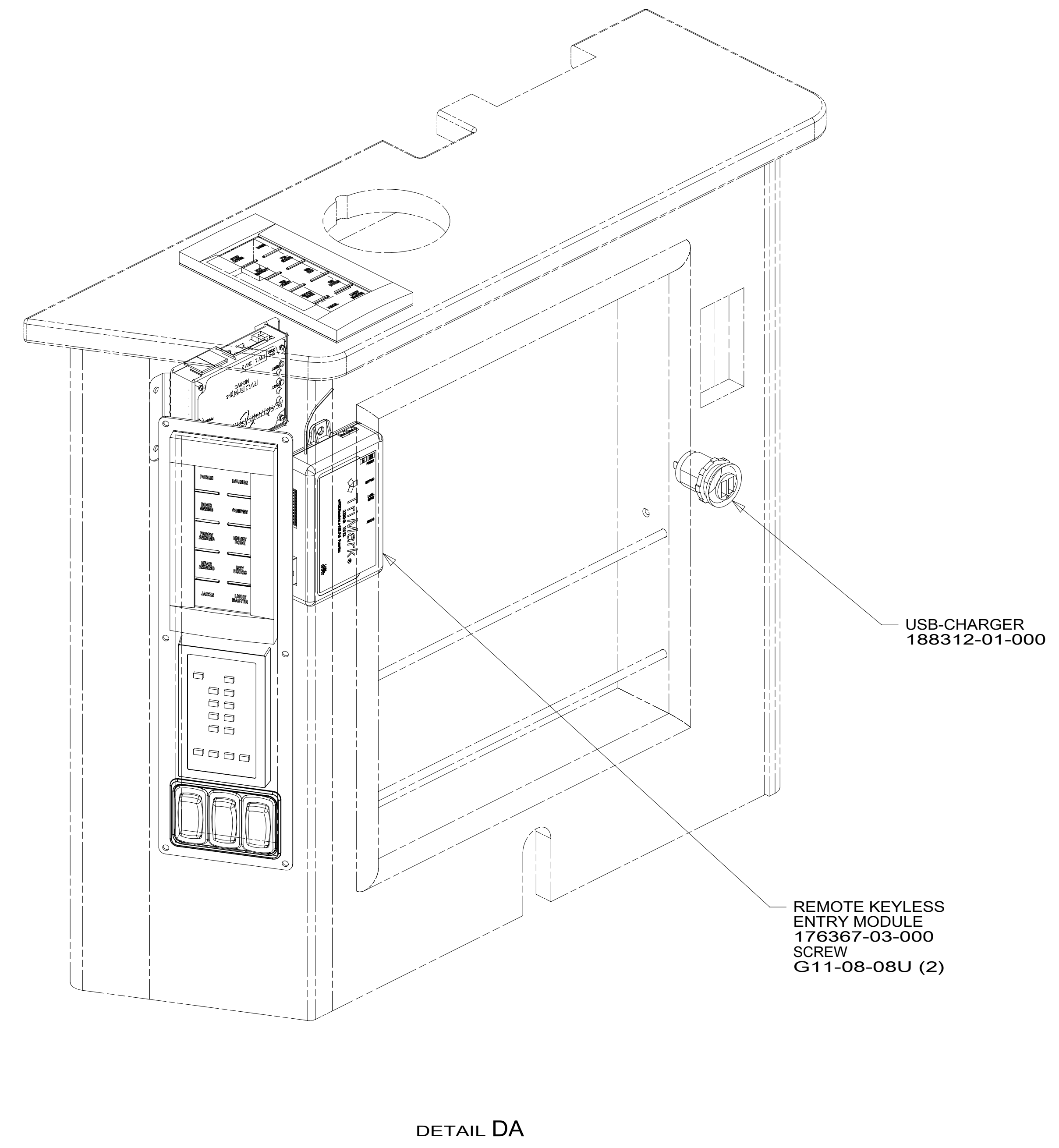
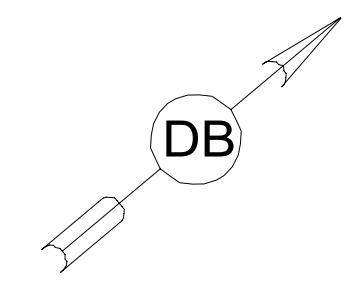
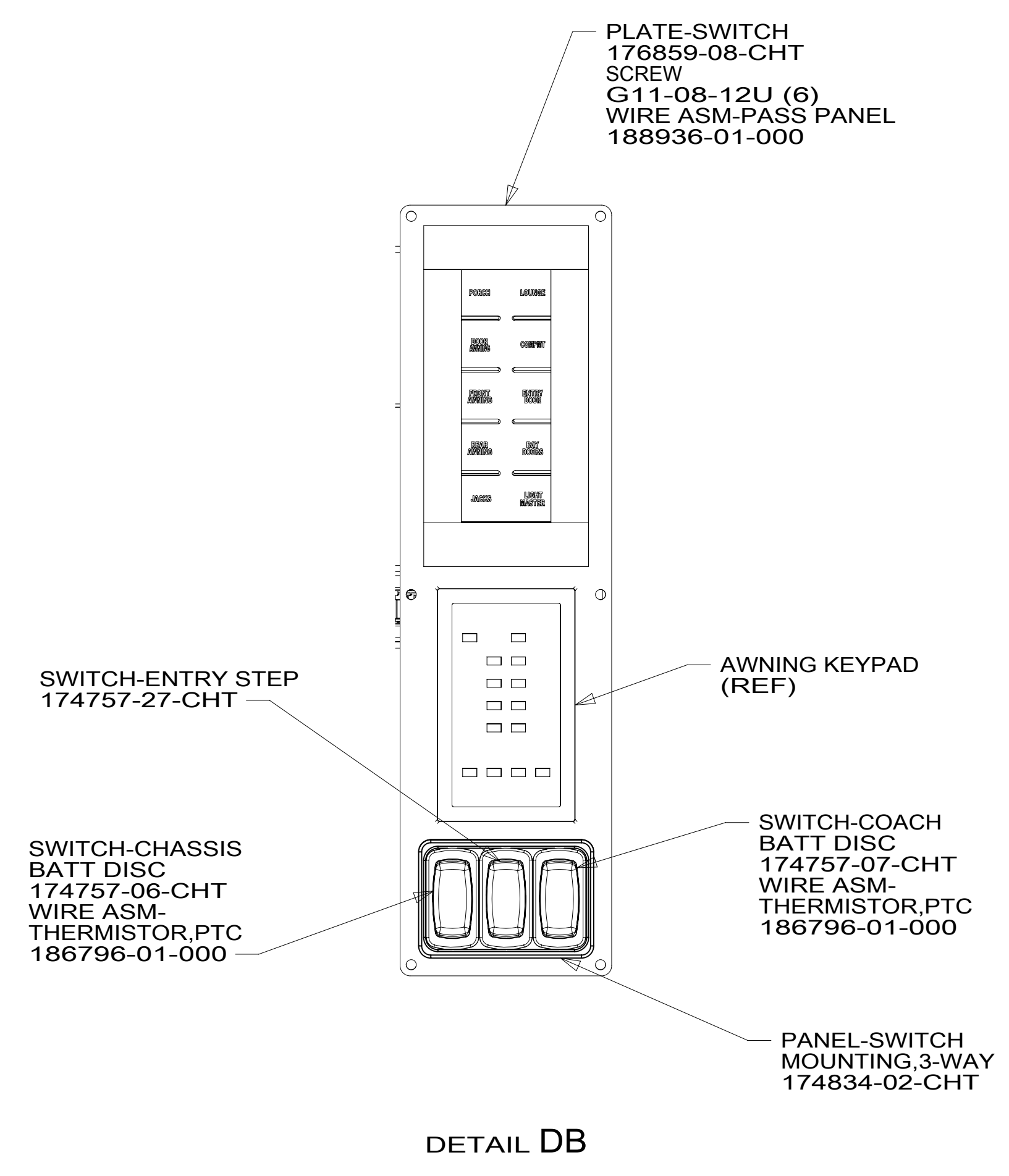
X-X FOR ELECTRICAL CALLOUTS SEE DWG NO. 121339-01-000

DESCRIPTION:	1B1 265	
<b>WIRING INSTL-BODY, 12V</b>		
SHEET:	ITEM/PART NO:	REV
3 OF 9	000216309 / 30371201000	

8 7 6 5 4 3 2 1 08-May-2017

8 7 6 5 4 3 2 1

D  
C  
B  
A



NOTES:

1. AT MINIMUM ALL WIRES TO BE SUPPORTED AND SECURED PER CODE REQUIREMENTS. USE CLAMP 10495 OR 10497 OR WIRE TIE 8343 OR 108046 AND SCREW G67-XX-XXX OR G56-XX-XXX AS APPROPRIATE FOR INSTALLATION.

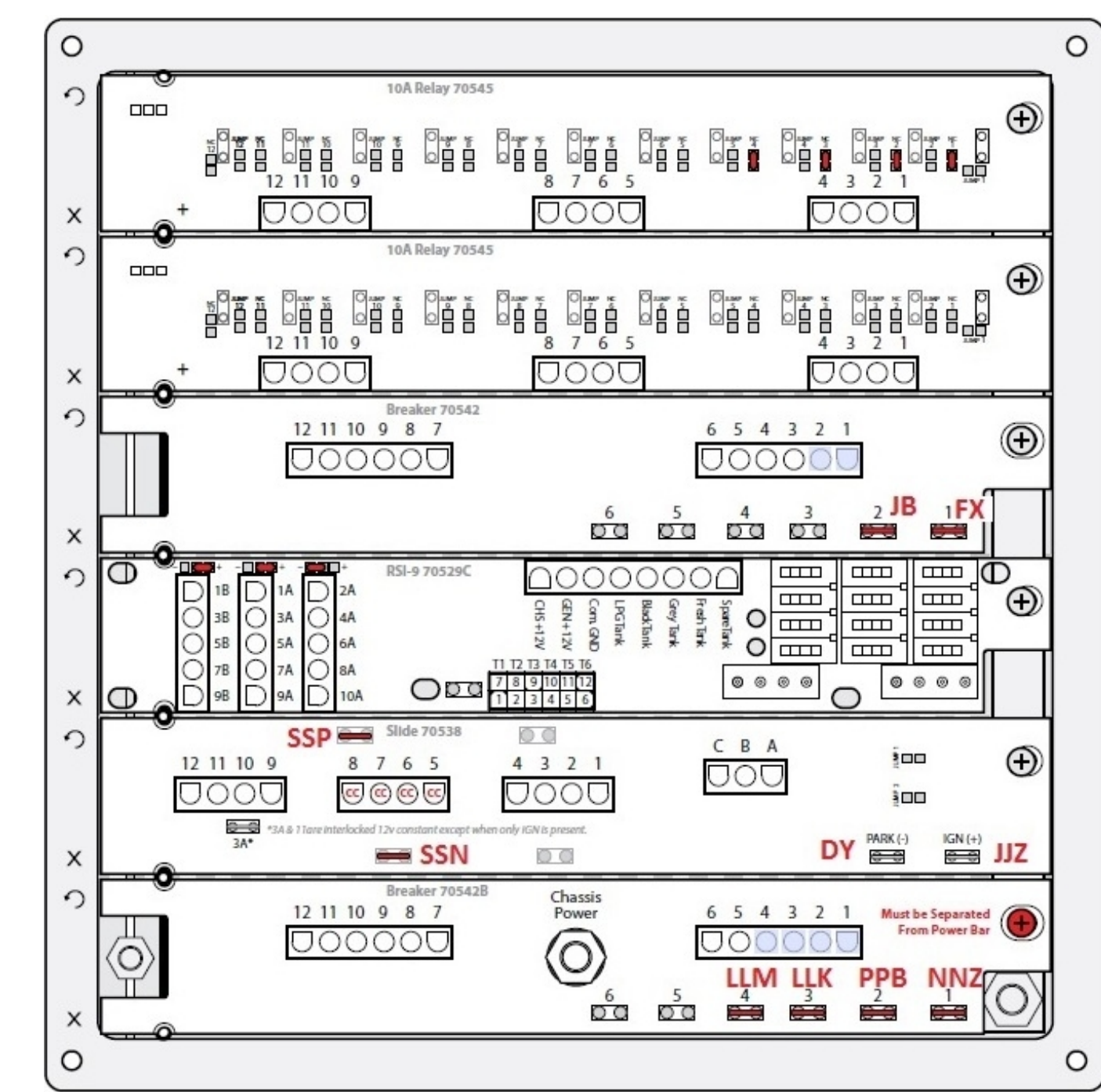
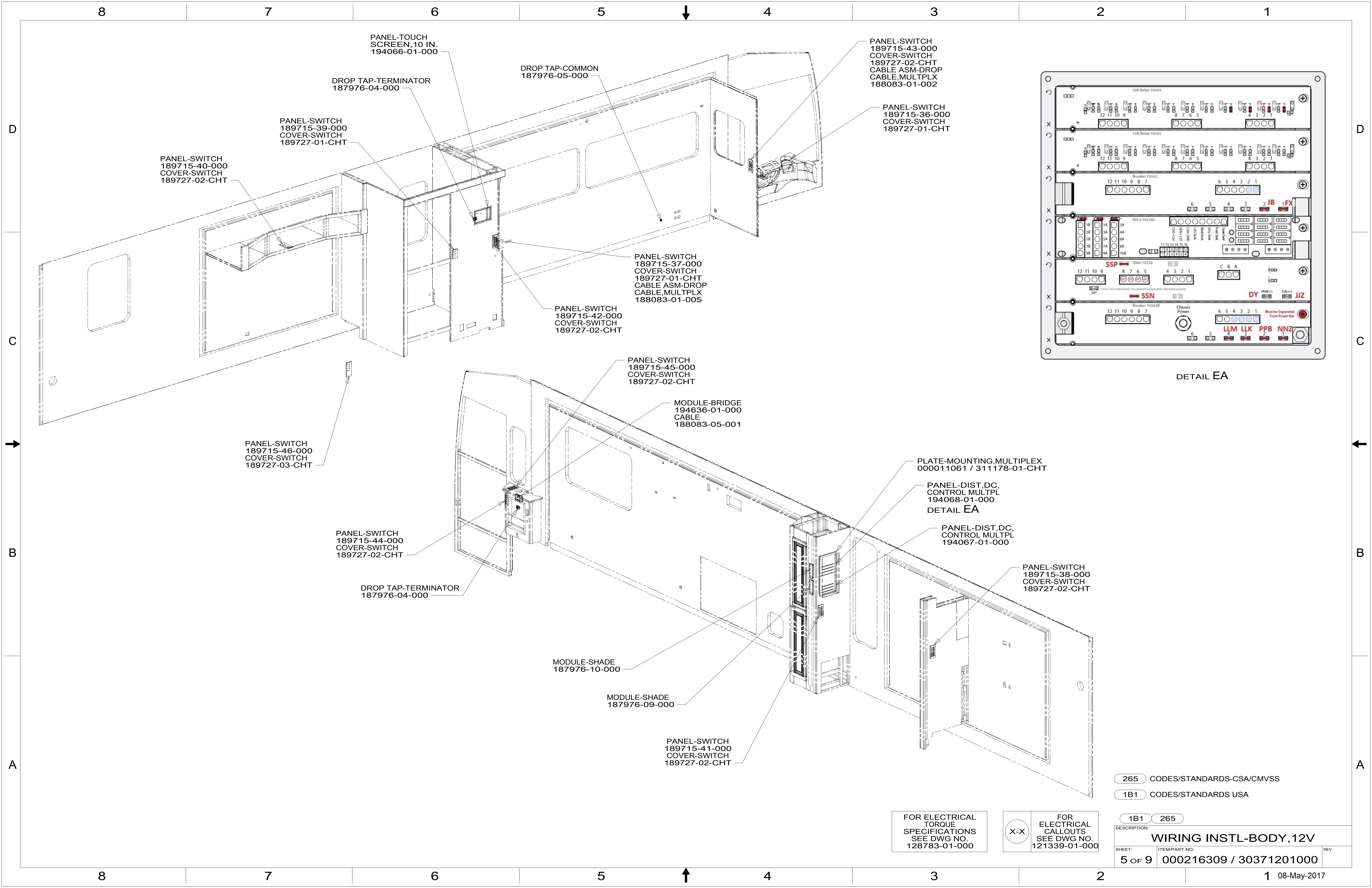
FOR ELECTRICAL TORQUE SPECIFICATIONS SEE DWG NO. 128783-01-000

FOR ELECTRICAL CALLOUTS SEE DWG NO. 121339-01-000

265 CODES/STANDARDS-CSA/CMVSS  
1B1 CODES/STANDARDS USA

DESCRIPTION:		1B1 265
<b>WIRING INSTL-BODY, 12V</b>		
SHEET:	ITEM/PART NO.:	REV
4 OF 9	000216309 / 30371201000	

8 7 6 5 4 3 2 1 08-May-2017



DETAIL EA

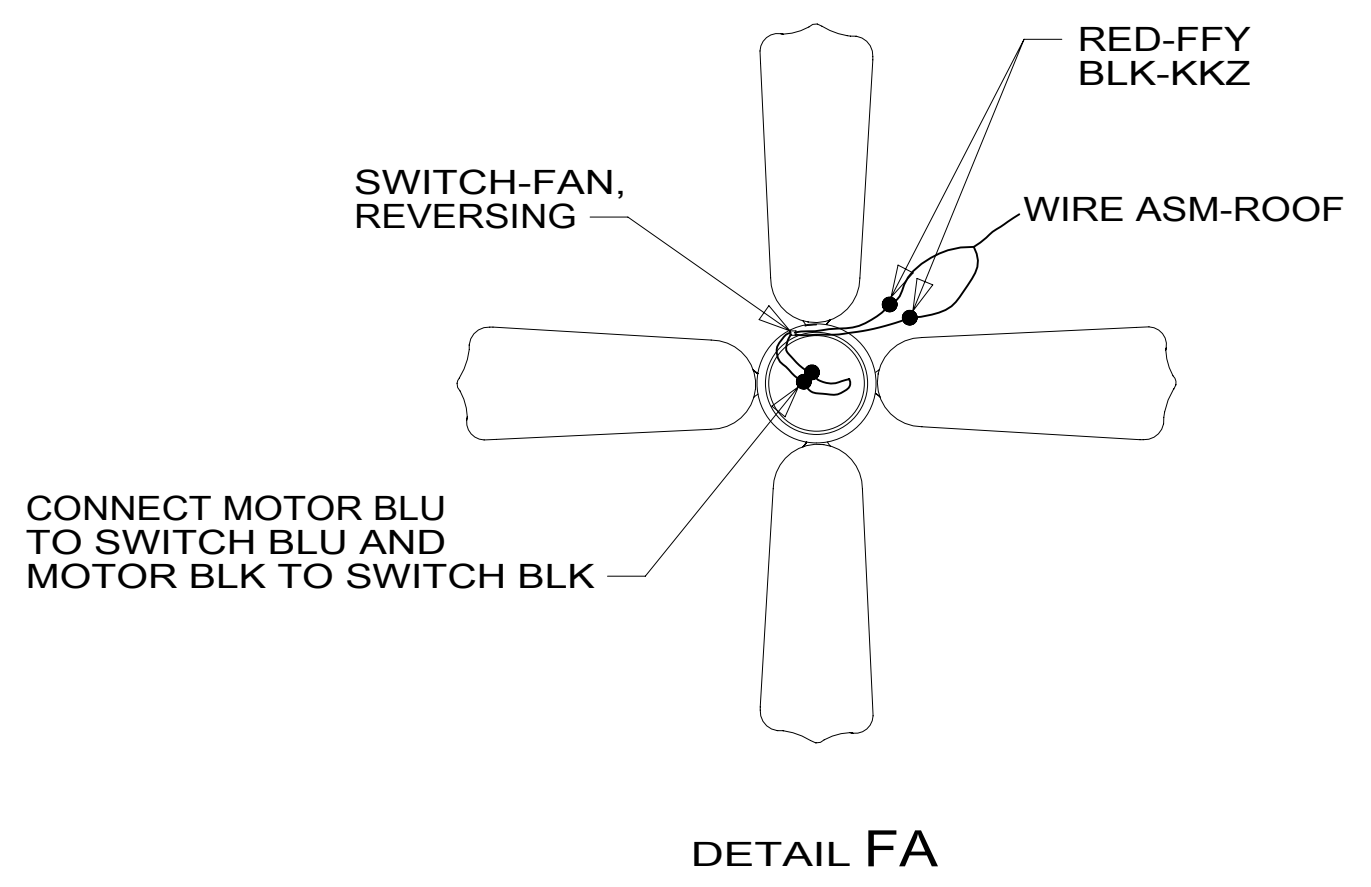
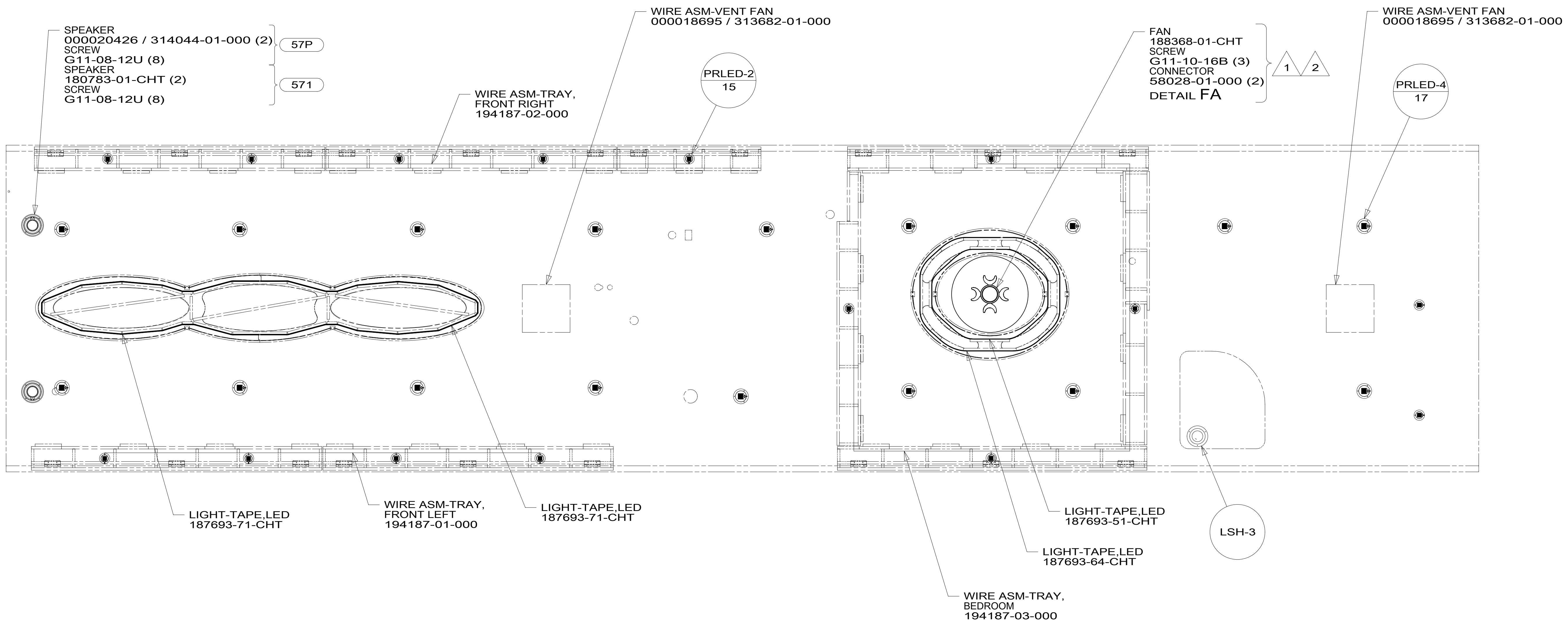
- 265 CODES/STANDARDS-CSA/CMVSS
- 1B1 CODES/STANDARDS USA

FOR ELECTRICAL TORQUE SPECIFICATIONS SEE DWG NO. 128783-01-000

FOR ELECTRICAL CALLOUTS SEE DWG NO. 121339-01-000

DESCRIPTION: <b>WIRING INSTL-BODY, 12V</b>		
SHEET: 5 OF 9	ITEM/PART NO.: 000216309 / 30371201000	REV
		1 08-May-2017

8 7 6 5 4 3 2 1



DETAIL FA

- NOTES:
- 2 CENTER FAN OVER 25MM HOLE IN ROOF.
  - 1 APPLY LOCTITE P/N 62917-06-000 TO FAN BLADE MOUNTING NUT THREADS.

- 57P RADIO SPEAKERS-PREMIUM SOUND
- 571 RADIO SPEAKERS
- 265 CODES/STANDARDS-CSA/CMVSS
- 1B1 CODES/STANDARDS USA

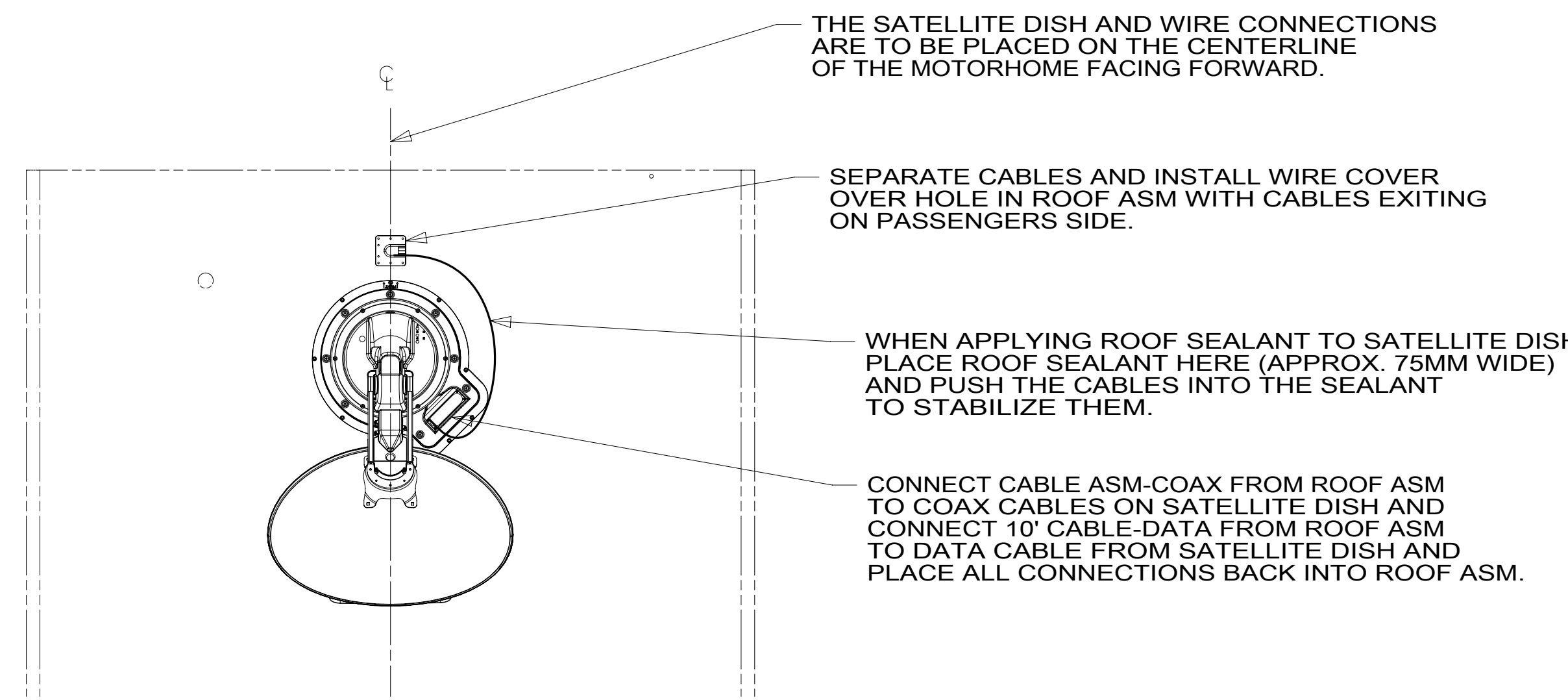
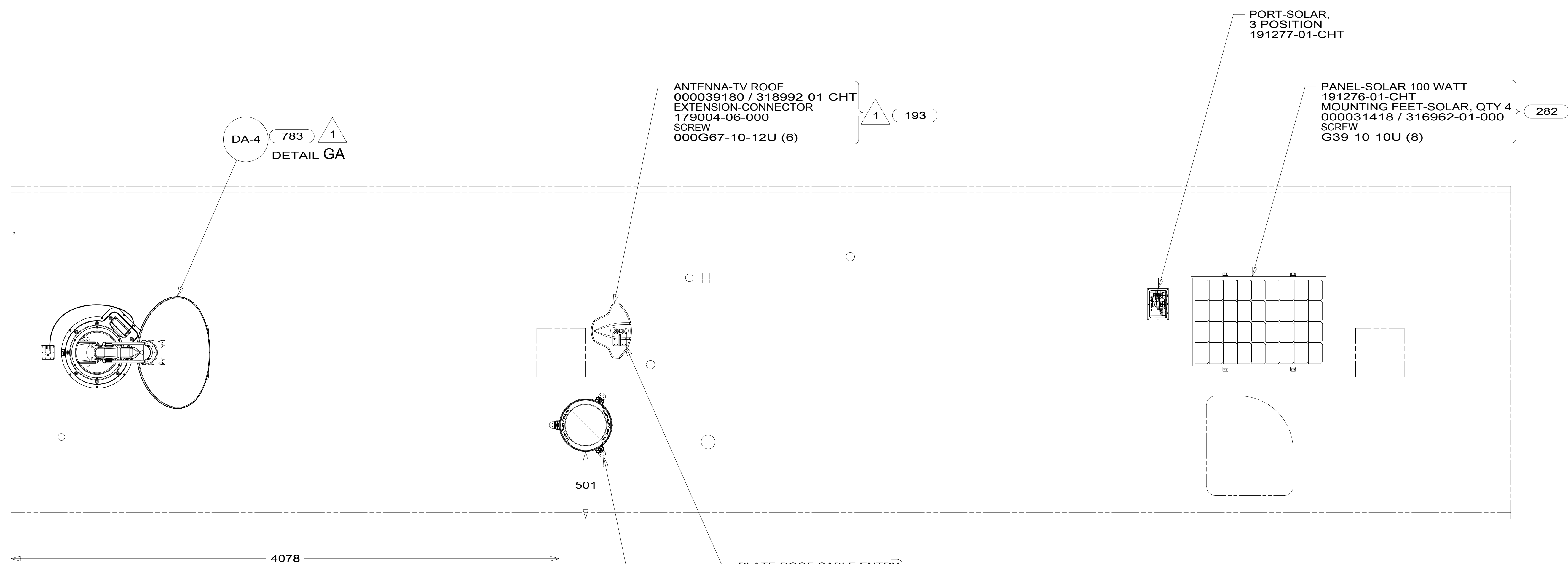
FOR ELECTRICAL TORQUE SPECIFICATIONS SEE DWG NO. 128783-01-000

FOR ELECTRICAL CALLOUTS SEE DWG NO. 121339-01-000

DESCRIPTION:		
<b>WIRING INSTL-BODY, 12V</b>		
SHEET:	ITEM/PART NO.:	REV
6 OF 9	000216309 / 30371201000	

8 7 6 5 4 3 2 1 08-May-2017

8 7 6 5 4 3 2 1



DETAIL GA

- 196 TV ANT-AUTO,DIRECTIONAL AMPL
- 193 TV ANT-DIGITAL AMPLIFIED
- 783 SATELLITE HD TV SYSTEM AUTOC
- 282 SOLAR PANEL - 100 WATT
- 265 CODES/STANDARDS-CSA/CMVSS
- 1B1 CODES/STANDARDS USA

1 SEE MANUFACTURER'S INSTALLATION FOR ADDITIONAL INFORMATION.

FOR ELECTRICAL TORQUE SPECIFICATIONS SEE DWG NO. 128783-01-000

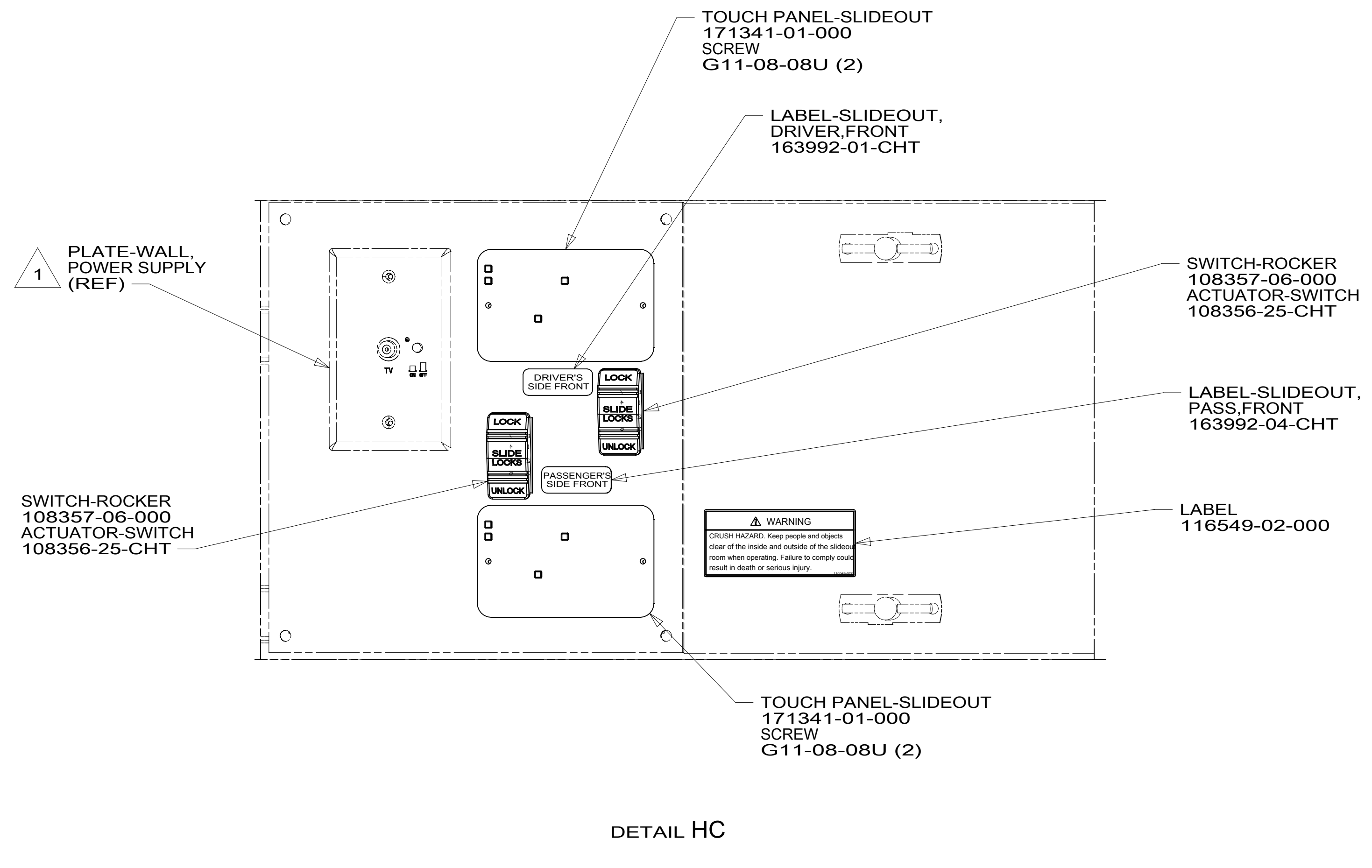
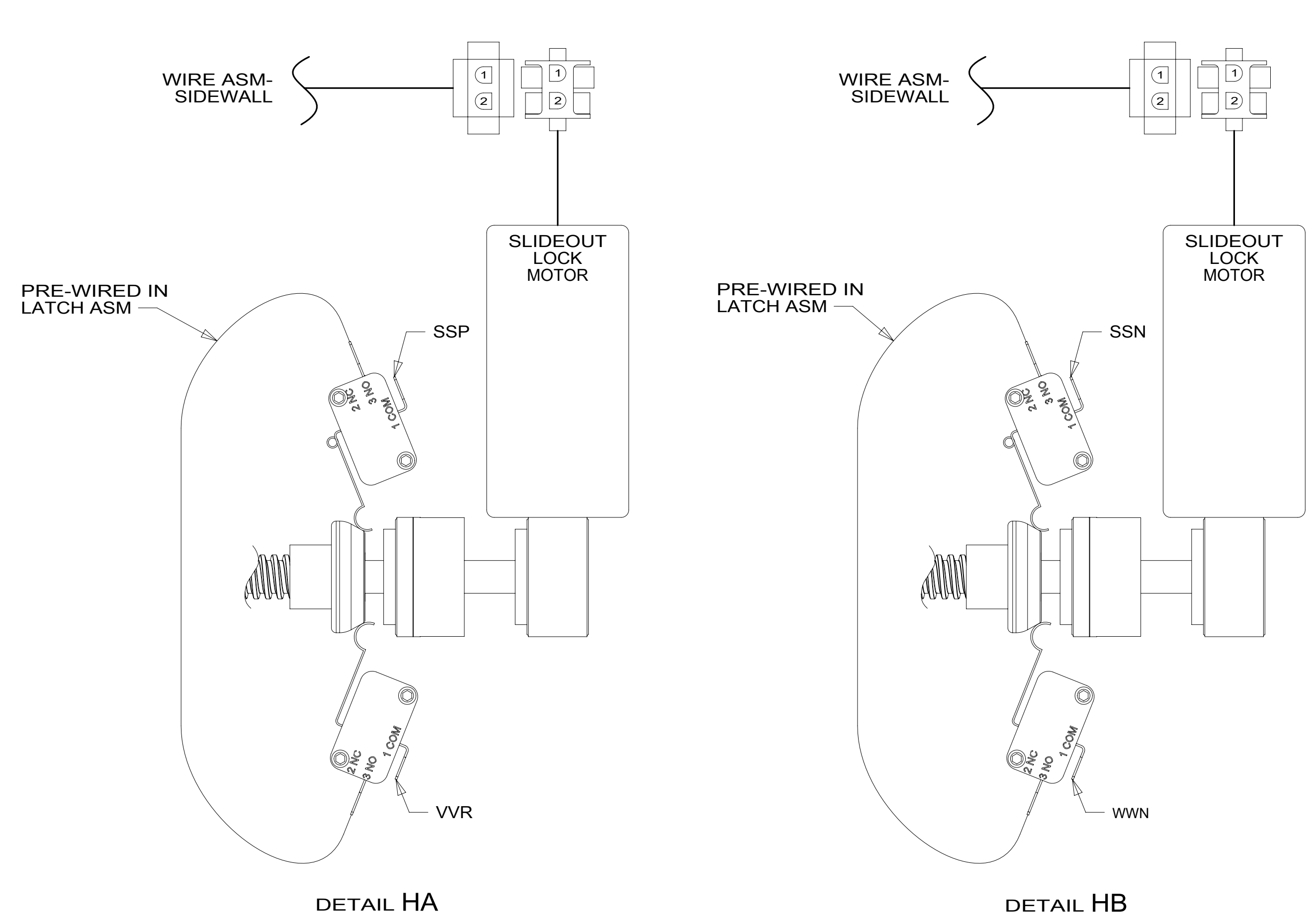
FOR ELECTRICAL CALLOUTS SEE DWG NO. 121339-01-000

DESCRIPTION:	1B1 265	
<b>WIRING INSTL-BODY, 12V</b>		
SHEET:	ITEM/PART NO.:	REV
7 OF 9	000216309 / 30371201000	

8 7 6 5 4 3 2 1

D

D

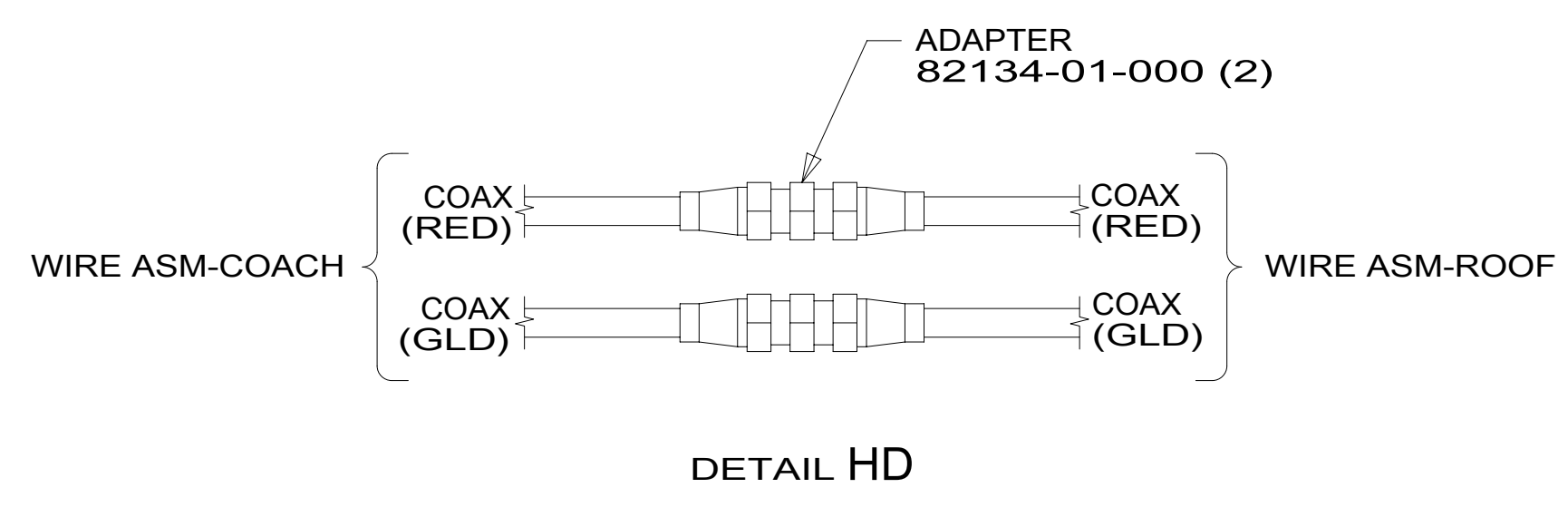


C

C

B

B



A

A

1 SEE WIRING INSTL-TV/DVD FOR ADDITIONAL INFORMATION.

NOTES:

FOR ELECTRICAL TORQUE SPECIFICATIONS SEE DWG NO. 128783-01-000

FOR ELECTRICAL CALLOUTS SEE DWG NO. 121339-01-000

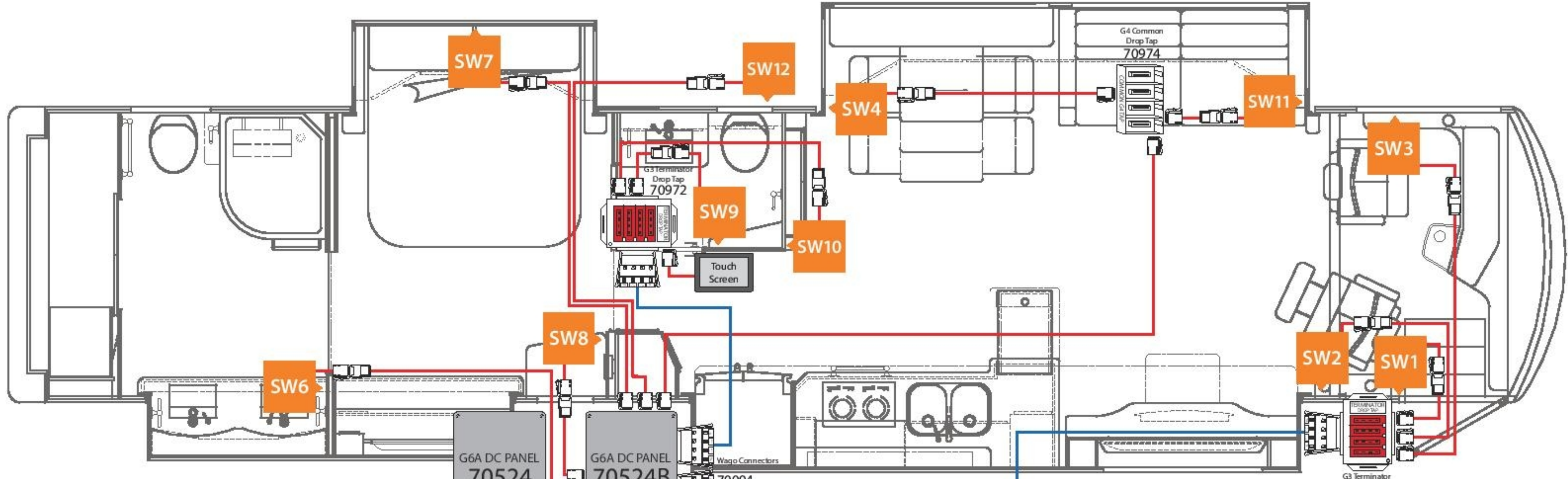
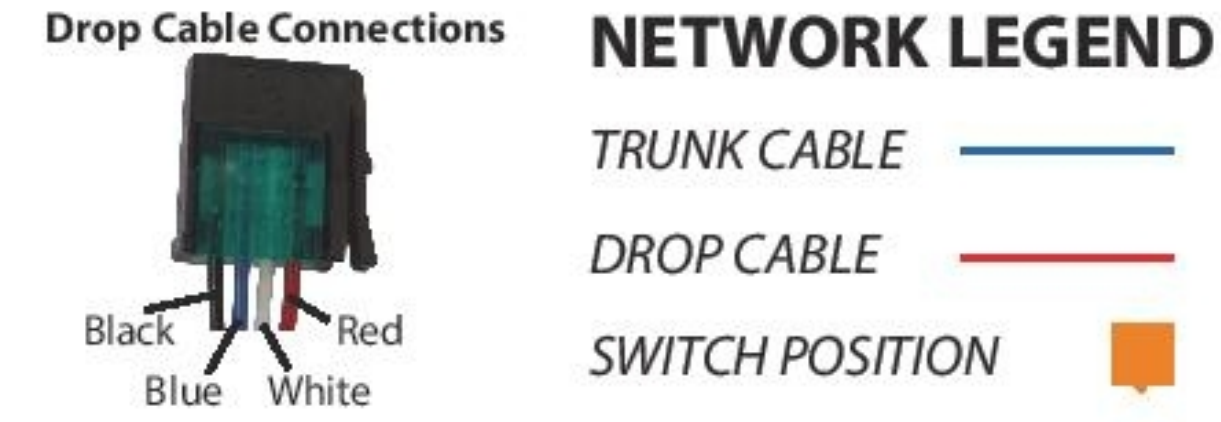
265 CODES/STANDARDS-CSA/CMVSS  
1B1 CODES/STANDARDS USA

DESCRIPTION: <b>WIRING INSTL-BODY, 12V</b>	
SHEET: 8 OF 9	ITEM/PART NO.: 000216309 / 30371201000
REV	

8 7 6 5 4 3 2 1 08-May-2017



**WINNEBAGO - R45RL**  
 SSP-14 NETWORK WIRING DIAGRAM  
 SWITCH PANEL LAYOUT  
 REV 1v2 6/23/15



WINNEBAGO - R45RL  
Orion 10" TouchScreen

Thermostat	Eng Preheat
Auto Generator Start	Burner
Energy Management	Burner Status
Rear Slideouts (D/S RR, P/S RR)	Engine Block Heater
Water Pump	Inverter Controls
Aqua Hot Elec	Tank Levels (Fresh, Gry 1, Gry 2, Blk)

Firefly P/N: 55501A  
Winnebago P/N: 194066-01-000

WINNEBAGO - R45RL  
SW3 - DRIVER

S4-8	DIS SHADE	WS DAY	S01
51	ENTRY DOOR	WS NIGHT	S02
52	STEP COVER	DOH	19
36			

Firefly P/N: 90101  
Winnebago P/N: 189715-36-000

Shade Module  
70530B

Shade Module  
70530C

WINNEBAGO - R45RL  
SW9 - MID BATH

16	BATH	WATER PUMP	17
30	WATER PUMP	HALLWAY	9
57		ASLE	18

Firefly P/N: 90402  
Winnebago P/N: 189715-39-000

WINNEBAGO - R45RL  
SW1 - ENTRY

27	PORCH	1
33	DOOR AWNING	25
34	FRONT AWNING	51
28	FRONT AWNING	52
29	REAR AWNING	53
37	JACKS	54
38	LIGHT MASTER	

Firefly P/N: 90002  
Winnebago P/N: 189715-44-000

WINNEBAGO - R45RL  
SW2 - PASSENGER

35	STEP COVER	DOH	19
36	EXT SECURITY	WS SHADE	S9-12
26, 27	WS NIGHT	WS DAY	S01
51	ENTRY DOOR	BAY DOORS	53
52	PANEL LIGHTS	LIGHT MASTER	54

Firefly P/N: 90051  
Winnebago P/N: 189715-45-000

WINNEBAGO - R45RL  
SW4 - DINETTE

1	LOUNGE	GALLEY	2
3	FRONT TRAY	SLEE CEILING	4
S4-8	DIS SHADE	DINETTE O/H/D	20

Firefly P/N: 90155  
Winnebago P/N: 189715-37-000

WINNEBAGO - R45RL  
SW6 - REAR BATH

15	WATER PUMP	13
30	WATER PUMP	14
45	ASLE	18
46	WATER PUMP	7
23	BATH ACBENT	26, 27
24	BATH ACBENT	26, 27

Firefly P/N: 90251  
Winnebago P/N: 189715-38-000

WINNEBAGO - R45RL  
SW7 - BED O/H/D

5	LEFT O/H/D	6
7	BEDROOM	8
58	BED LIFT	49
59	BEDROOM	50
S14,15,16	BEDROOM SHADES	47
16	PANEL LIGHTS	48

Firefly P/N: 90302  
Winnebago P/N: 189715-40-000

WINNEBAGO - R45RL  
SW8 - BEDROOM

49	BED LIFT	7
50	ACCENT	8
12	DRESSER O/H/D	58
21	BEDROOM SHADES	59
S14,15,16	BEDROOM SHADES	51,53
16	PANEL LIGHTS	52,54

Firefly P/N: 90356  
Winnebago P/N: 189715-41-000

WINNEBAGO - R45RL  
SW10 - GALLEY

1	LOUNGE	2
3	FRONT TRAY	10
9	HALLWAY	4
11	ACCENT	18
43	ASLE	18
44	ALLFRIT SHADES	S1-12

Firefly P/N: 90452  
Winnebago P/N: 189715-42-000

WINNEBAGO - R45RL  
SW11 - LOUNGE

1	LOUNGE	22
3	FRONT TRAY	4
11	ACCENT	18
S4-8	DIS SHADES	31
S9-12	WS SHADES	S1-12

Firefly P/N: 90506  
Winnebago P/N: 189715-43-000

WINNEBAGO - R45RL  
SW12 - BAY

26	SERVICE BAY DOORS	53
25	CONPAT	37
30	WATER PUMP	47
	PANEL LIGHTS	48
	FRESH AIR	

Firefly P/N: 90554  
Winnebago P/N: 189715-46-000

265 CODES/STANDARDS-CSA/CMVSS  
 1B1 CODES/STANDARDS USA

FOR ELECTRICAL TORQUE SPECIFICATIONS SEE DWG NO. 128783-01-000

FOR ELECTRICAL CALLOUTS SEE DWG NO. 121339-01-000

1B1	265
DESCRIPTION: <b>WIRING INSTL-BODY, 12V</b>	
SHEET: 9 OF 9	ITEM/PART NO: 000216309 / 30371201000
REV 1 08-May-2017	