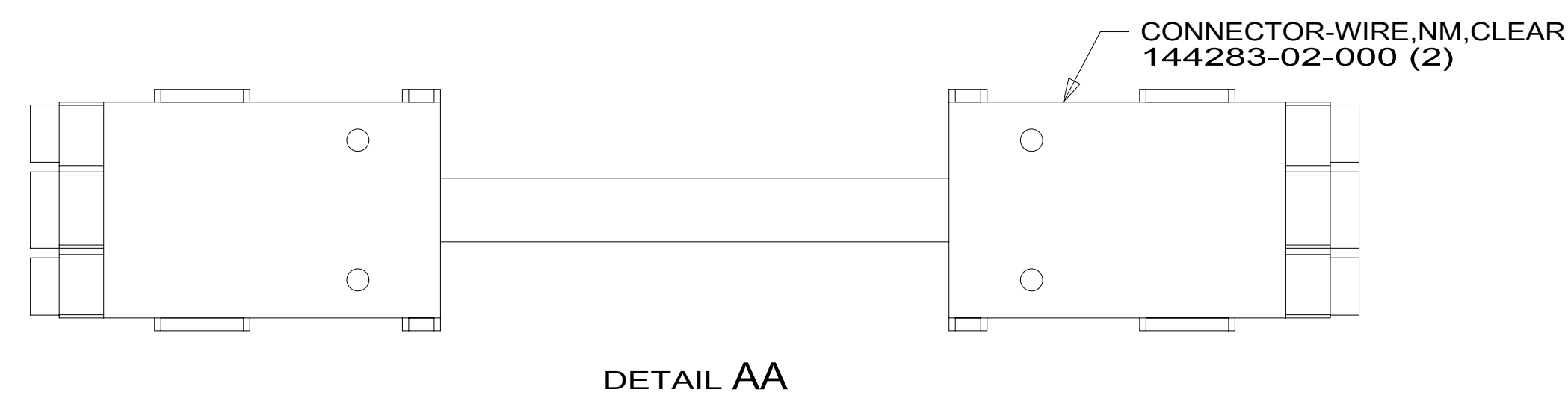
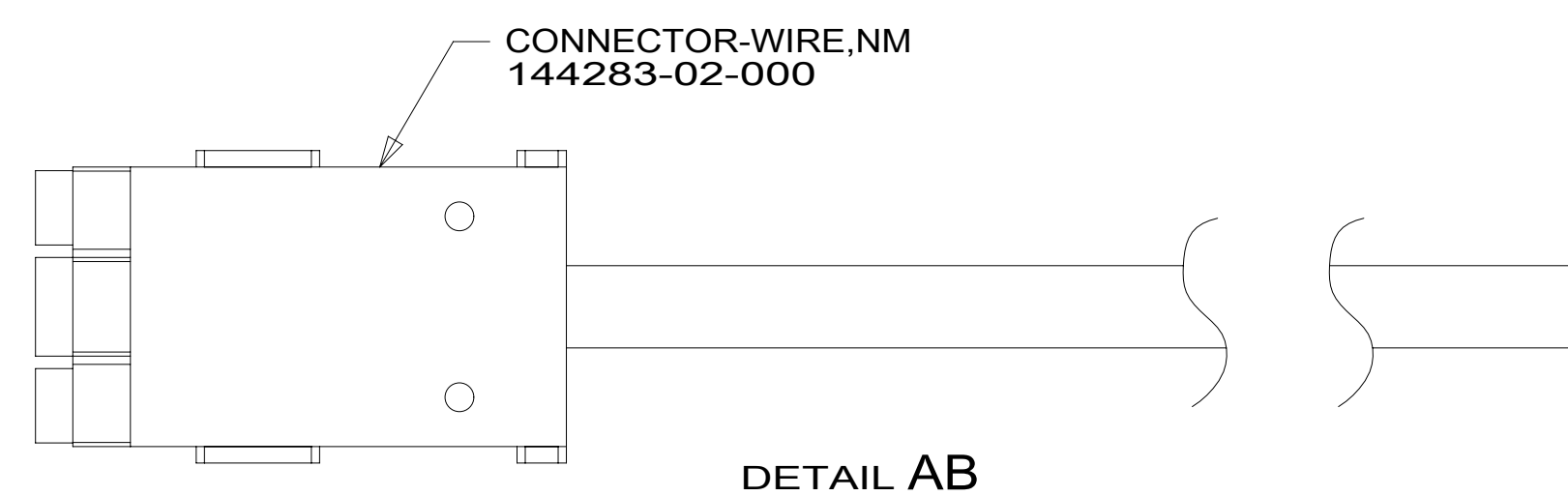
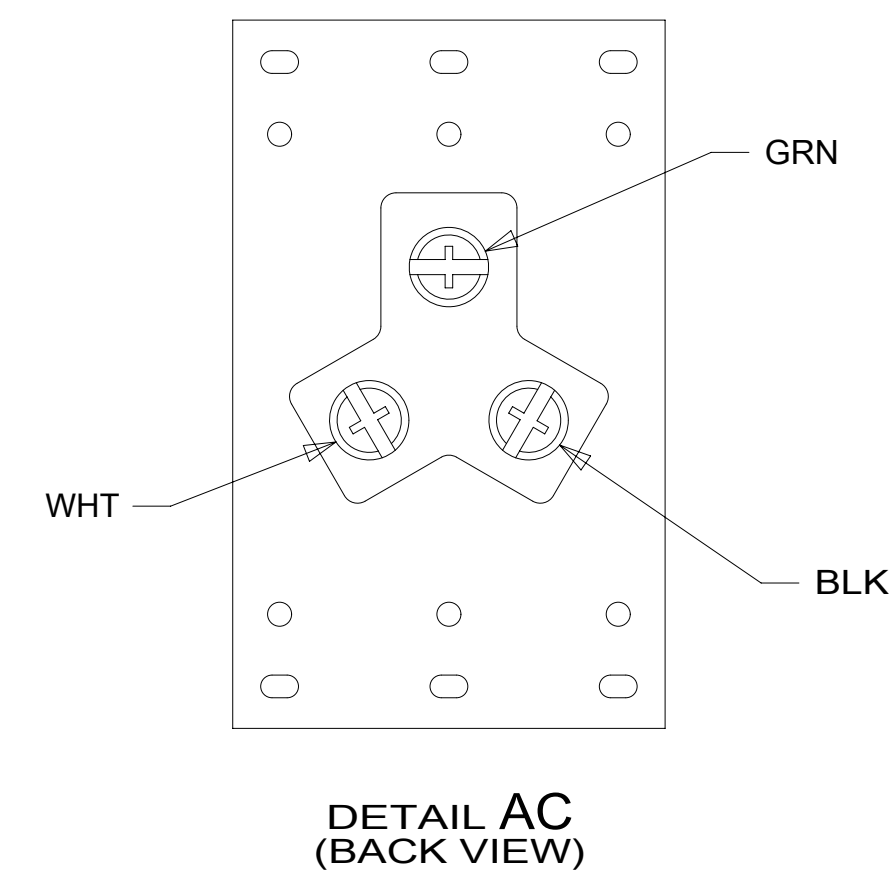
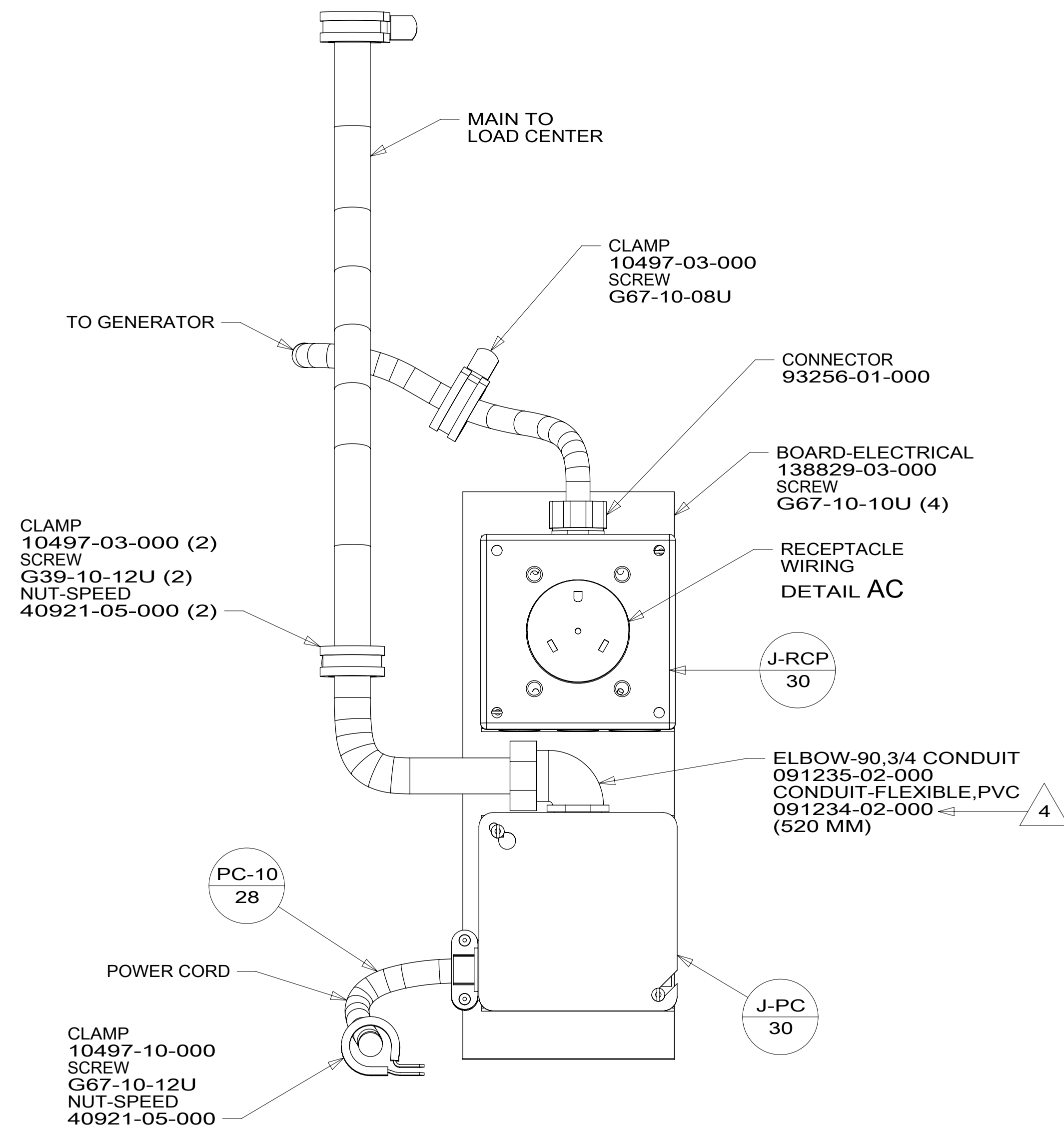


RED	1B1	136135-07-058
	265	136136-07-058
YEL	1B1	136131-05-050
	265	136134-05-050
BRN	1B1	136131-03-100
	265	136134-03-100
BLU	1B1	136131-02-135
	265	136134-02-135
MAIN	1B1	136137-01-081
	265	136138-01-081
BLK	1B1	136131-06-061
	265	136134-06-061
THROW IN WIRE #1	1B1	136131-03-032
	265	136134-03-032
SLIDEOUT WIRE #1		136151-03-016
GROUND MAIN		178545-01-020



- SECURE CONDUIT TO MAIN CABLE ASSEMBLY WITH TAPE 8363-01-000 FOR TRANSPORTATION PURPOSES.
- SEE DETAIL AB FOR CONNECTOR INSTALLATION.
- SEE DETAIL AA FOR CONNECTOR INSTALLATION.

1. ALL GROUND WIRES TO BE COVERED WITH TUBING 8041-02-000.

NOTES:

FOR ELECTRICAL TORQUE SPECIFICATIONS SEE DWG NO. 128783-01-000

FOR ELECTRICAL CALLOUTS SEE DWG NO. 121339-01-000

CODES/STANDARDS-CSA/CMVSS  
 CODES/STANDARDS USA

<b>WINNEBAGO</b> COPYRIGHT 2016 WINNEBAGO INDUSTRIES, INC.		
DSNR:	ALL DIMENSIONS ARE IN MILLIMETERS	
DFFR:		
UNSPECIFIED TOLERANCES:	MATERIAL:	
WHOLE DIM (X) :		
ONE-PLACE (X.X) :		
TWO-PLACE (X.XX) :		
ANGLE :		
REFER TO ES0018 FOR FASTENER TIGHTENING GUIDELINES	WEIGHT: (LBS) 0	FIRST USED:
DESCRIPTION: <b>LOAD CENTER/ATS ASM</b>		
SHEET: 1 OF 2	ITEM/PART NO: 000215451 / 30367001000	REV:

