

RED	1B1	136135-07-078
	265	136136-07-078
YEL	1B1	136131-05-029
	265	136134-05-029
YEL-2	1B1	136131-13-024 078
	265	136134-13-024 078
BRN	1B1	136131-03-048 2
	265	136134-03-048 2
BLU	1B1	136131-02-145
	265	136134-02-145
MAIN	1B1	136137-01-069 12D
	265	136138-01-069 12D
MAIN	1B1	136139-01-064 078
	265	136140-01-064 078
GRN	1B1	136135-08-073 078
	265	136136-08-073 078
BLK	1B1	136135-06-027
	265	136136-06-027
WHT	1B1	136135-09-065 6
	265	136136-09-065 6
THROW IN WIRE #1	1B1	136131-02-003 2
	265	136134-02-003 2
THROW IN WIRE #2	1B1	136131-19-184 4
	265	136134-19-184 4
THROW IN WIRE #3	1B1	136131-03-009 2 5 401
	265	136134-03-009 2 5 401

THROW IN WIRE #4	1B1	136131-19-009 2 5 401
	265	136134-19-009 2 5 401
THROW IN WIRE #5	1B1	136131-02-003 2
	265	136134-02-003 2
THROW IN WIRE #6	1B1	136131-19-025 2 21R
	265	136134-19-025 2 21R
THROW IN WIRE #7	1B1	136131-03-036 2
	265	136134-03-036 2
THROW IN WIRE #8	1B1	136131-19-021 21R
	265	136134-19-021 21R
SLIDEOUT WIRE #1		136151-03-031 3
GROUND ATS		136145-01-042
GROUND MAIN		178545-01-015 12D
		136145-01-015 078

D

D

C

C

B

B

A

A

- 6 SEE DETAIL BF FOR CONNECTOR INSTALLATION.
- 5 SEE DETAIL BD FOR CONNECTOR INSTALLATION.
- 4 SEE DETAIL BC FOR CONNECTOR INSTALLATION.
- 3 SEE DETAIL BB FOR CONNECTOR INSTALLATION.
- 2 SEE DETAIL BA FOR CONNECTOR INSTALLATION.

1. ALL GROUND WIRES TO BE COVERED WITH TUBING 8041-02-000.

NOTES:

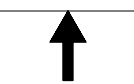
- 21R DINING/BUFFET/POWERED TV
- 401 INVERTER-DC/AC, 1000 WATT
- 078 ALL WEATHER UPGRADE PACKAGE
- 12D ELECTRICAL SYSTEM 30 AMP
- 265 CODES/STANDARDS-CSA/CMVSS
- 1B1 CODES/STANDARDS USA

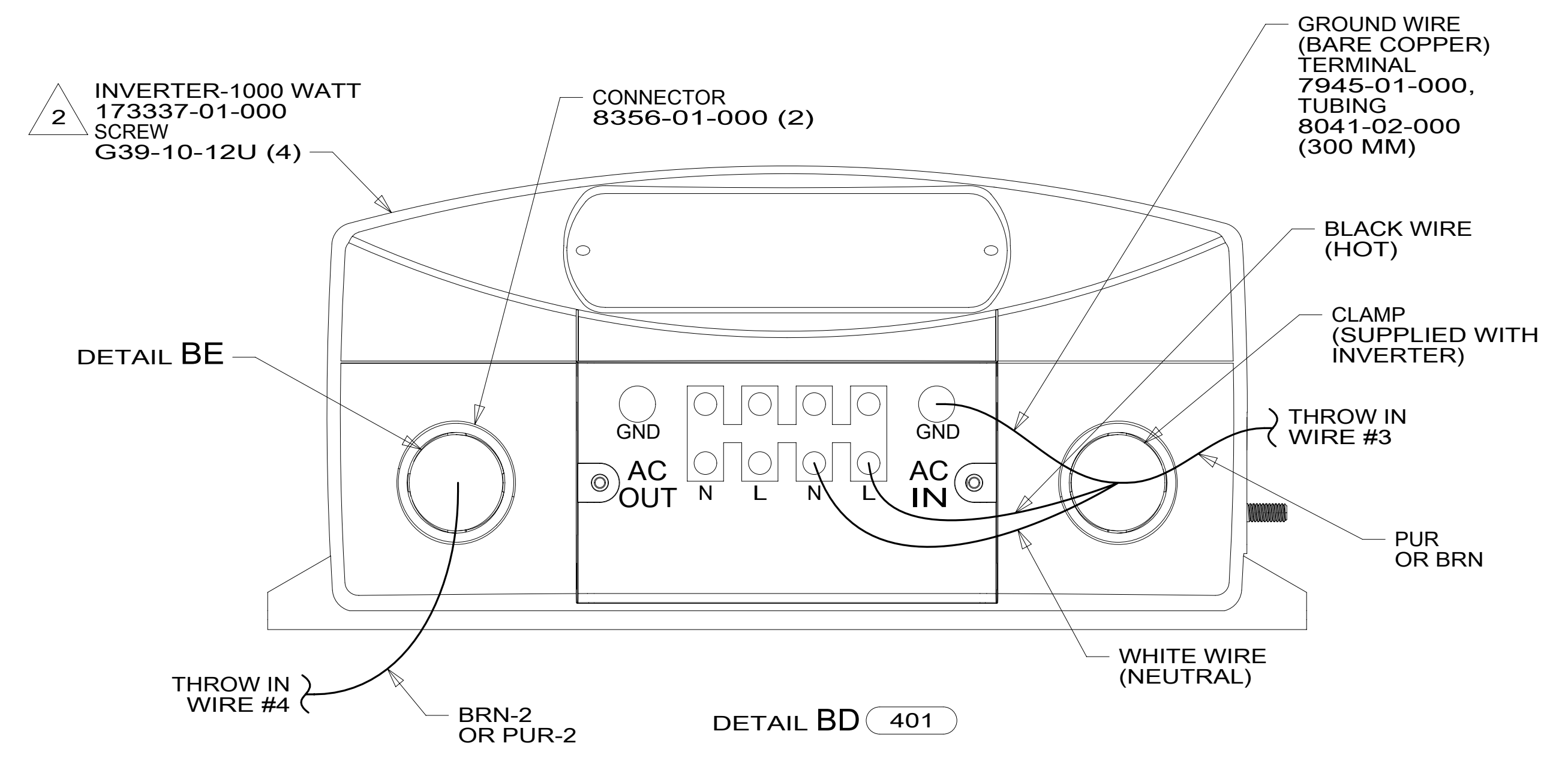
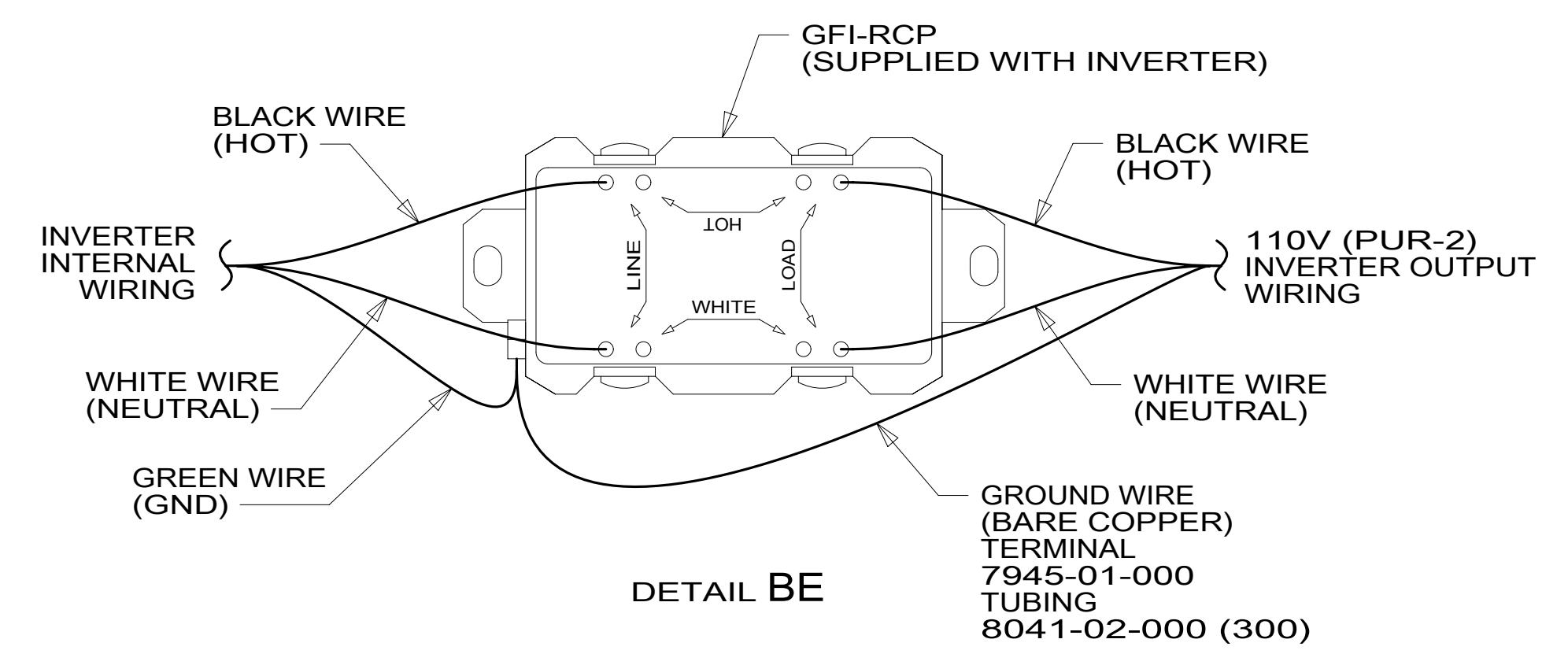
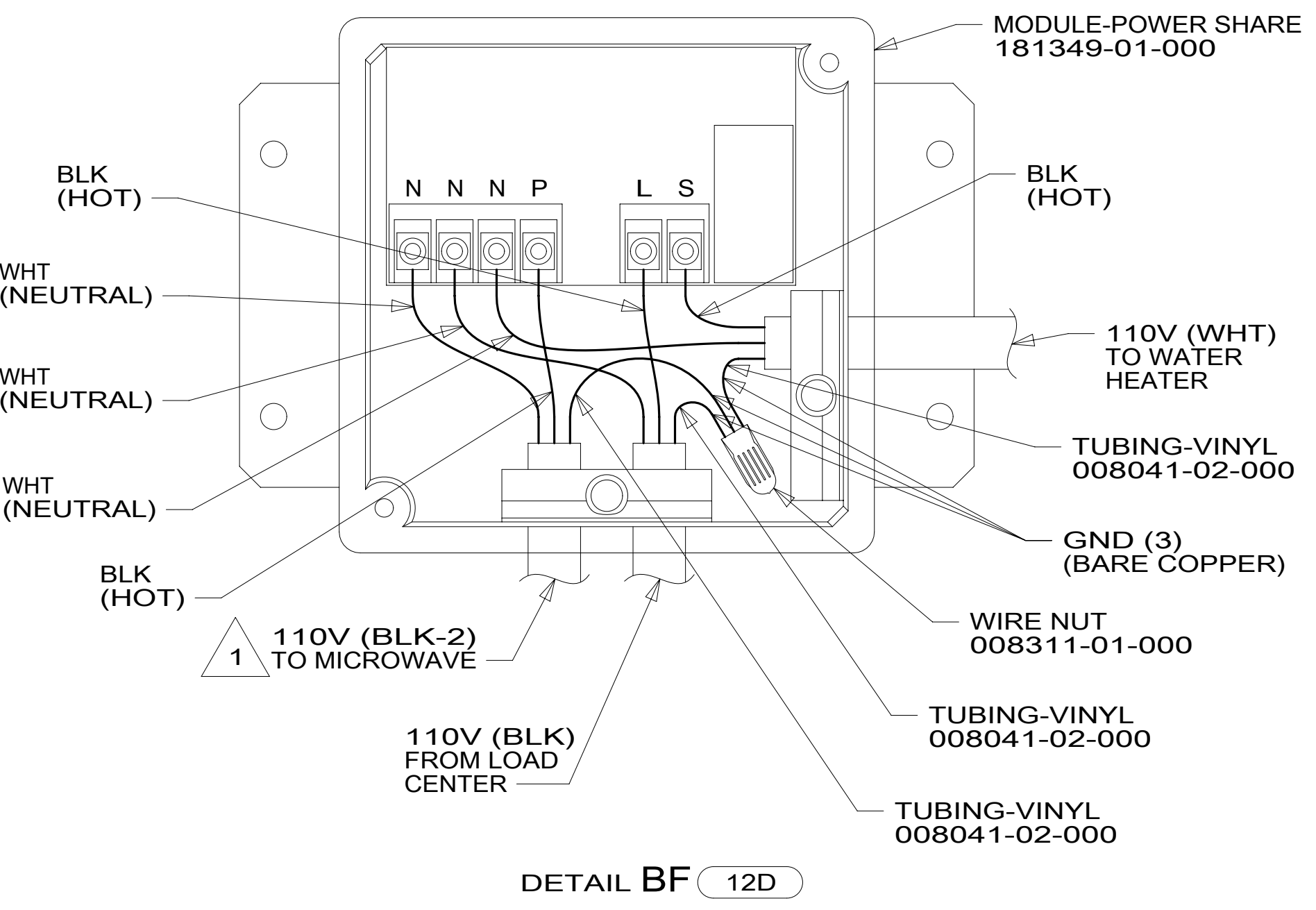
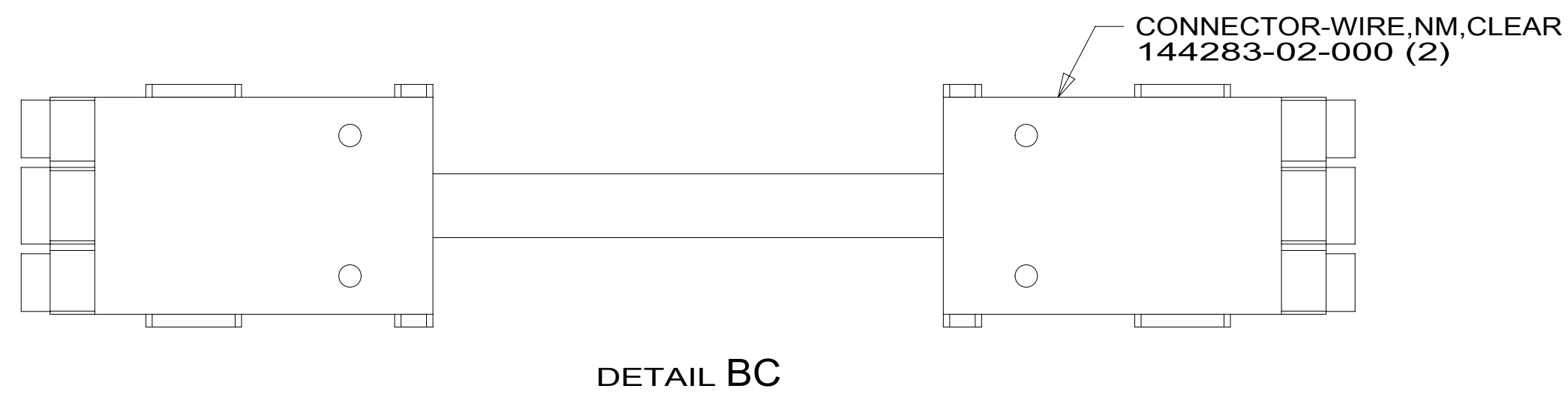
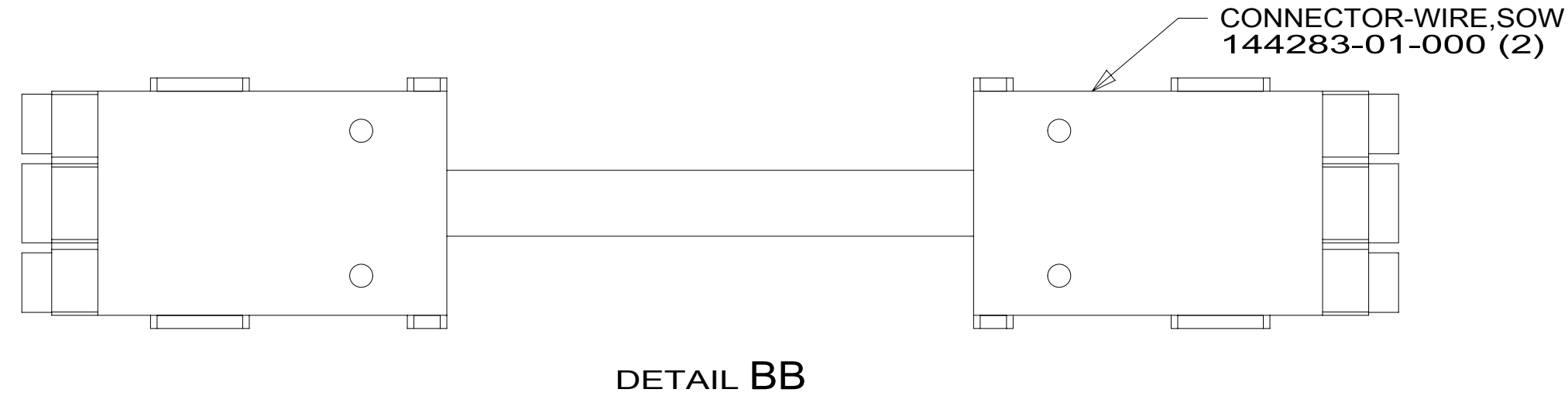
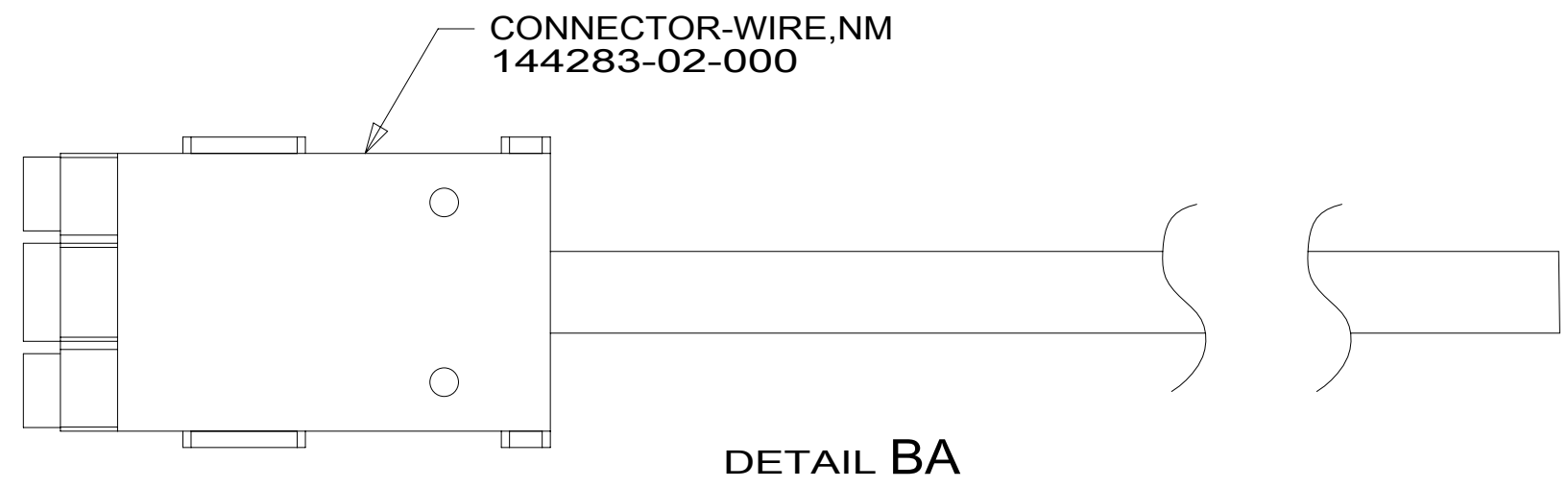
**WINNEBAGO**<sup>®</sup>  
COPYRIGHT 2016 WINNEBAGO INDUSTRIES, INC.

DSNR:	ALL DIMENSIONS ARE IN MILLIMETERS	
DFFR:	MATERIAL:	
UNSPECIFIED TOLERANCES:	WHOLE DIM (X) :	3
	ONE-PLACE (X.X) :	1.5
	TWO-PLACE (X.XX) :	0.50
	ANGLE :	1°
REFER TO ES0018 FOR FASTENER TIGHTENING GUIDELINES	WEIGHT: (LBS)	FIRST USED:
		17 E30T
DESCRIPTION: <b>LOAD CENTER/ATS ASM</b>		
SHEET: 1 OF 5	ITEM/PART NO: 000214939 / 30362301000	REV:
REF: 1		13-Dec-2016

FOR ELECTRICAL TORQUE SPECIFICATIONS SEE DWG NO. 128783-01-000

FOR ELECTRICAL CALLOUTS SEE DWG NO. 121339-01-000





NOTES:

2 INVERTER SUPPLIED WITH REMOTE PANEL SEND TO MANUFACTURING LINE.

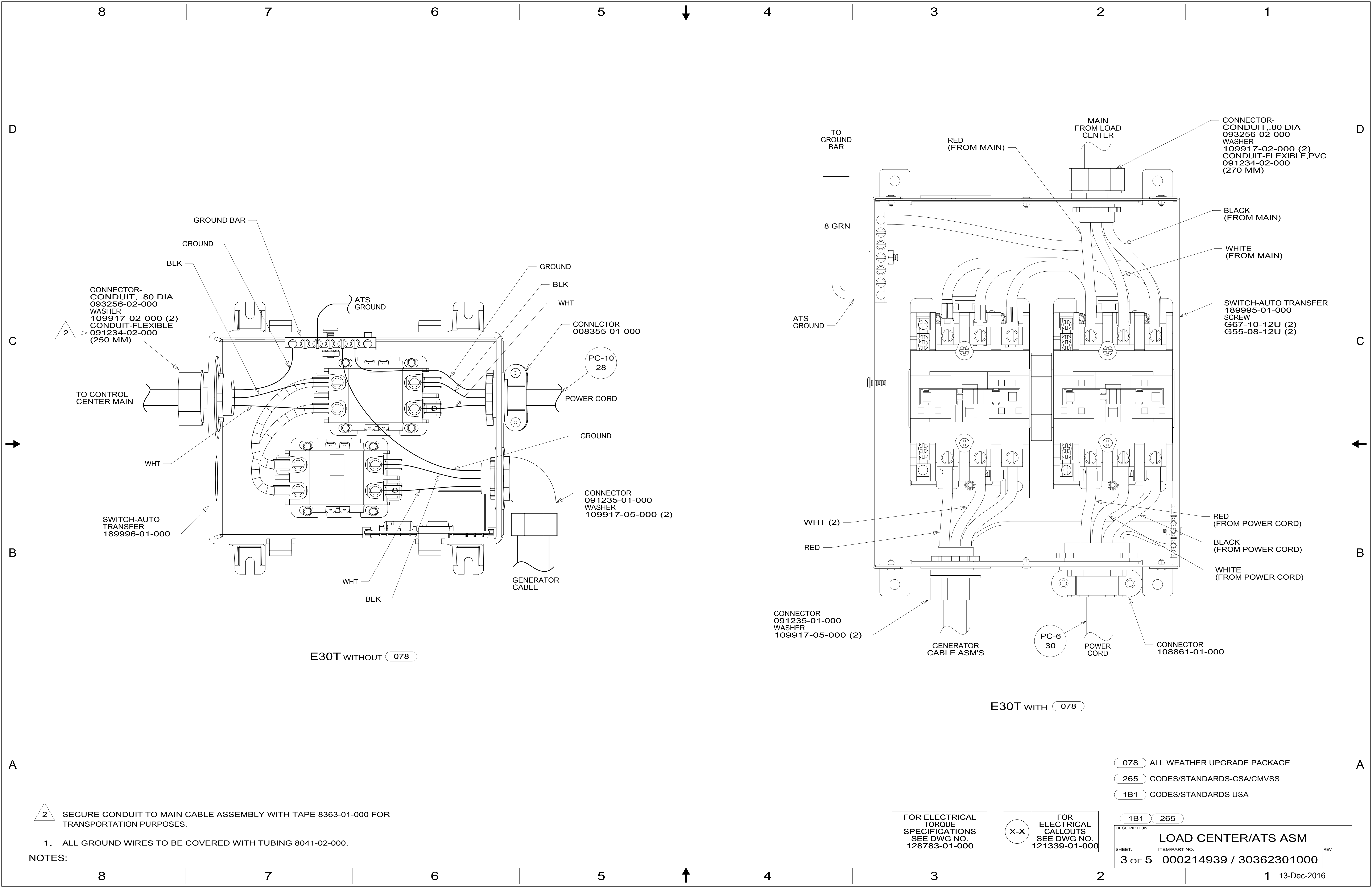
1 MEASURE 1400 MM FROM THE BACK OF THE LOAD CENTER.

FOR ELECTRICAL TORQUE SPECIFICATIONS SEE DWG NO. 128783-01-000

FOR ELECTRICAL CALLOUTS SEE DWG NO. 121339-01-000

- 401 INVERTER-DC/AC, 1000 WATT
- 12D ELECTRICAL SYSTEM 30 AMP
- 265 CODES/STANDARDS-CSA/CMVSS
- 1B1 CODES/STANDARDS USA

DESCRIPTION:		1B1 265	
<b>LOAD CENTER/ATS ASM</b>			
SHEET:	ITEM/PART NO.:	REV	
2 OF 5	000214939 / 30362301000		



CONNECTOR-CONDUIT, .80 DIA  
093256-02-000  
WASHER  
109917-02-000 (2)  
CONDUIT-FLEXIBLE  
091234-02-000  
(250 MM)

TO CONTROL CENTER MAIN

SWITCH-AUTO TRANSFER  
189996-01-000

E30T WITHOUT 078

TO GROUND BAR  
8 GRN  
ATS GROUND

WHT (2)  
RED

CONNECTOR  
091235-01-000  
WASHER  
109917-05-000 (2)

GENERATOR CABLE ASM'S

PC-6  
30

POWER CORD

CONNECTOR  
108861-01-000

E30T WITH 078

CONNECTOR-CONDUIT, .80 DIA  
093256-02-000  
WASHER  
109917-02-000 (2)  
CONDUIT-FLEXIBLE, PVC  
091234-02-000  
(270 MM)

BLACK (FROM MAIN)

WHITE (FROM MAIN)

SWITCH-AUTO TRANSFER  
189995-01-000  
SCREW  
G67-10-12U (2)  
G55-08-12U (2)

RED (FROM POWER CORD)

BLACK (FROM POWER CORD)

WHITE (FROM POWER CORD)

- 078 ALL WEATHER UPGRADE PACKAGE
- 265 CODES/STANDARDS-CSA/CMVSS
- 1B1 CODES/STANDARDS USA

2 SECURE CONDUIT TO MAIN CABLE ASSEMBLY WITH TAPE 8363-01-000 FOR TRANSPORTATION PURPOSES.

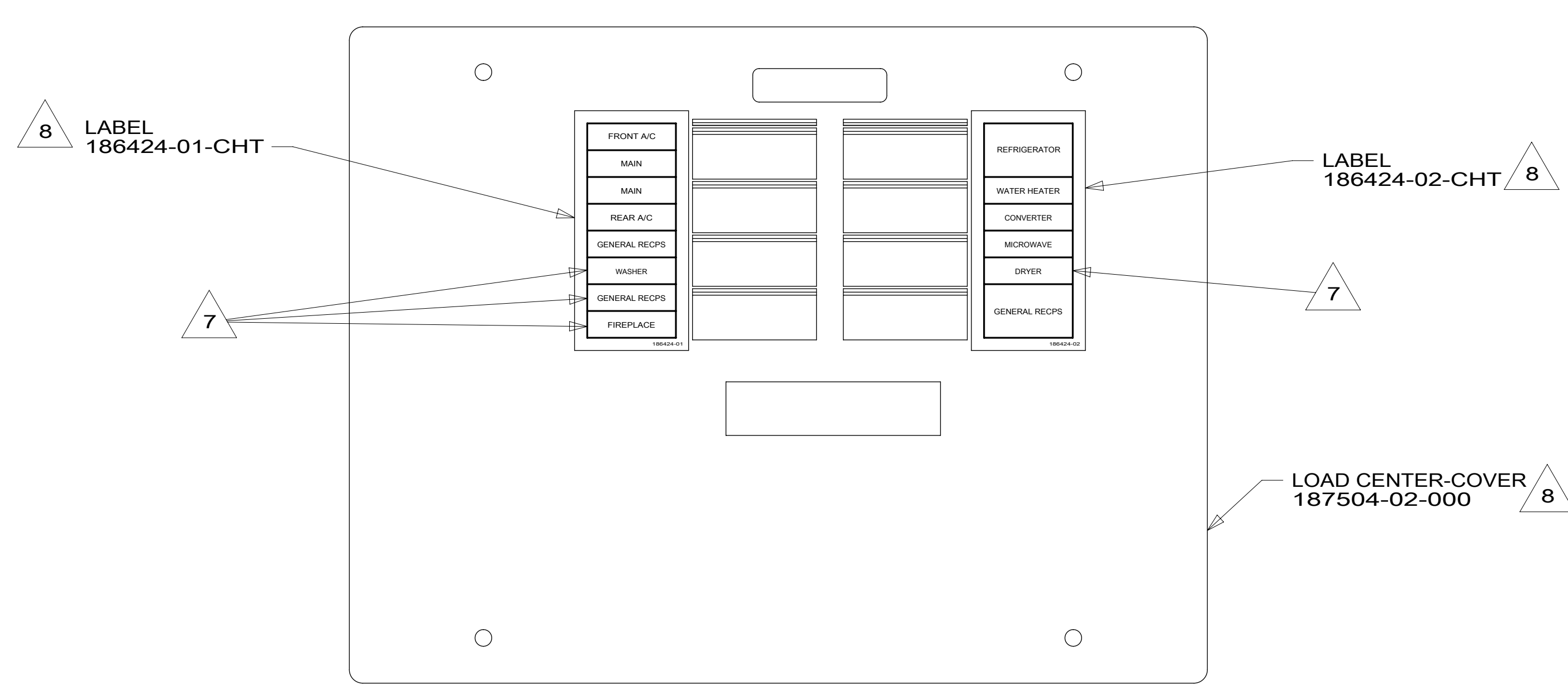
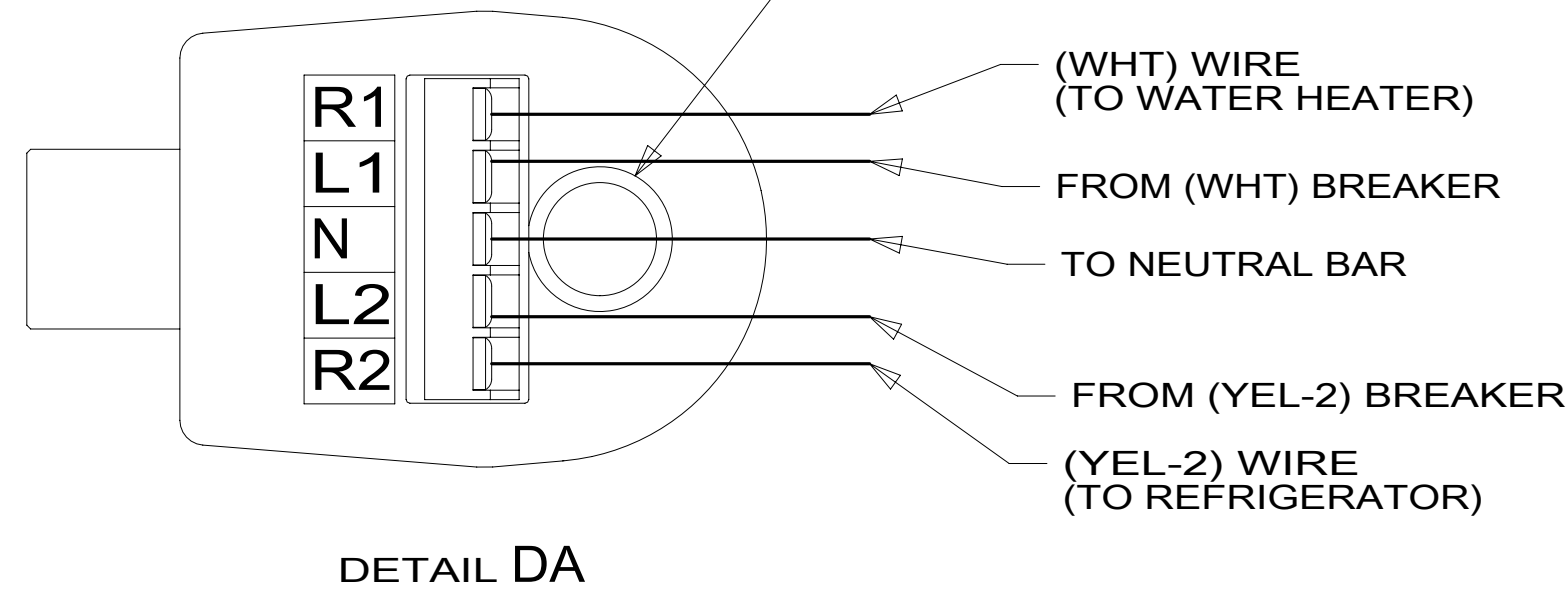
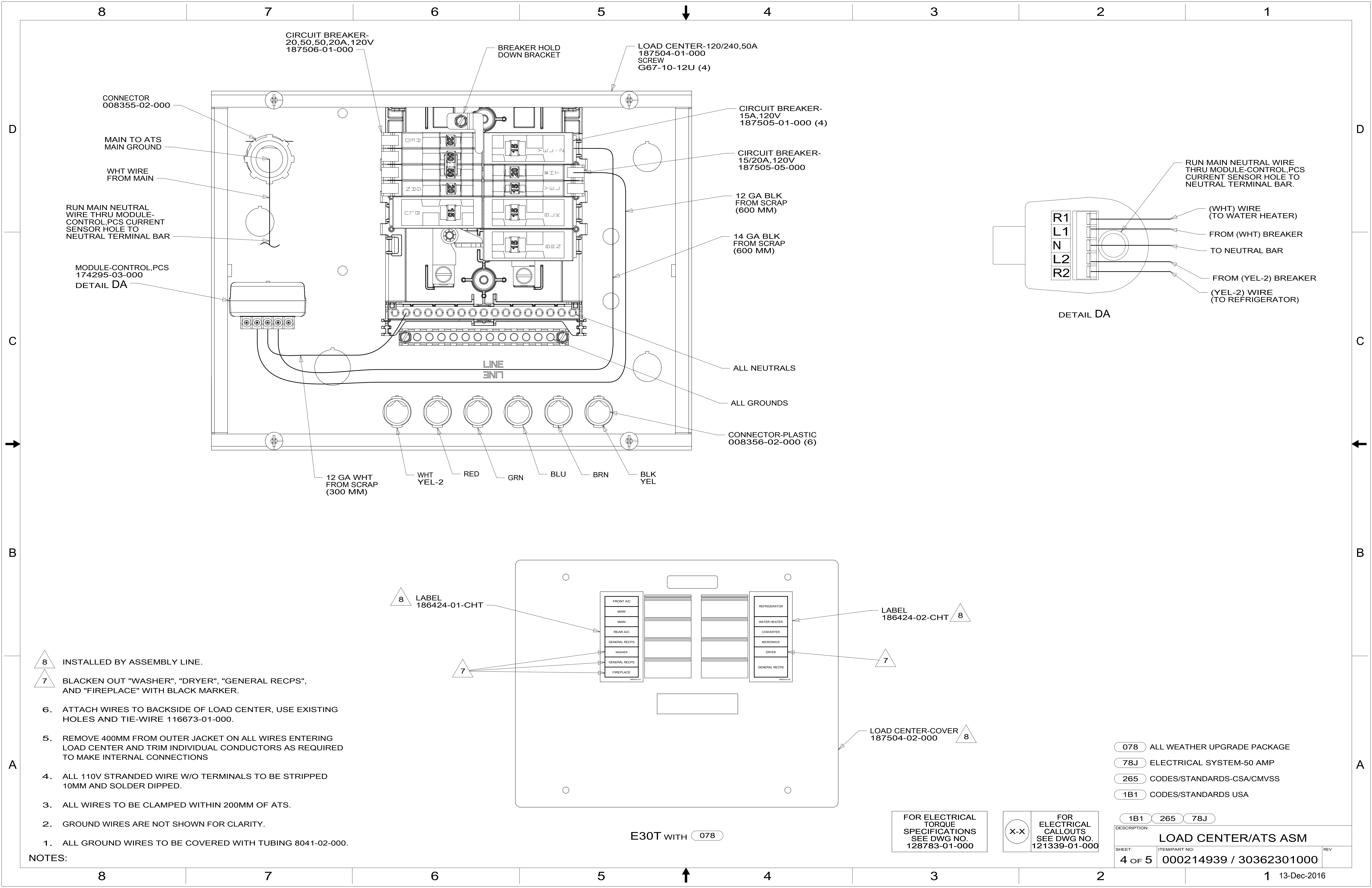
1. ALL GROUND WIRES TO BE COVERED WITH TUBING 8041-02-000.

NOTES:

FOR ELECTRICAL TORQUE SPECIFICATIONS SEE DWG NO. 128783-01-000

FOR ELECTRICAL CALLOUTS SEE DWG NO. 121339-01-000

DESCRIPTION: <b>LOAD CENTER/ATS ASM</b>	
SHEET: 3 OF 5	ITEM/PART NO.: 000214939 / 30362301000
REV 13-Dec-2016	



- NOTES:**
- 8 INSTALLED BY ASSEMBLY LINE.
  - 7 BLACKEN OUT "WASHER", "DRYER", "GENERAL RECPS", AND "FIREPLACE" WITH BLACK MARKER.
  - 6. ATTACH WIRES TO BACKSIDE OF LOAD CENTER, USE EXISTING HOLES AND TIE-WIRE 116673-01-000.
  - 5. REMOVE 400MM FROM OUTER JACKET ON ALL WIRES ENTERING LOAD CENTER AND TRIM INDIVIDUAL CONDUCTORS AS REQUIRED TO MAKE INTERNAL CONNECTIONS
  - 4. ALL 110V STRANDED WIRE W/O TERMINALS TO BE STRIPPED 10MM AND SOLDER DIPPED.
  - 3. ALL WIRES TO BE CLAMPED WITHIN 200MM OF ATS.
  - 2. GROUND WIRES ARE NOT SHOWN FOR CLARITY.
  - 1. ALL GROUND WIRES TO BE COVERED WITH TUBING 8041-02-000.

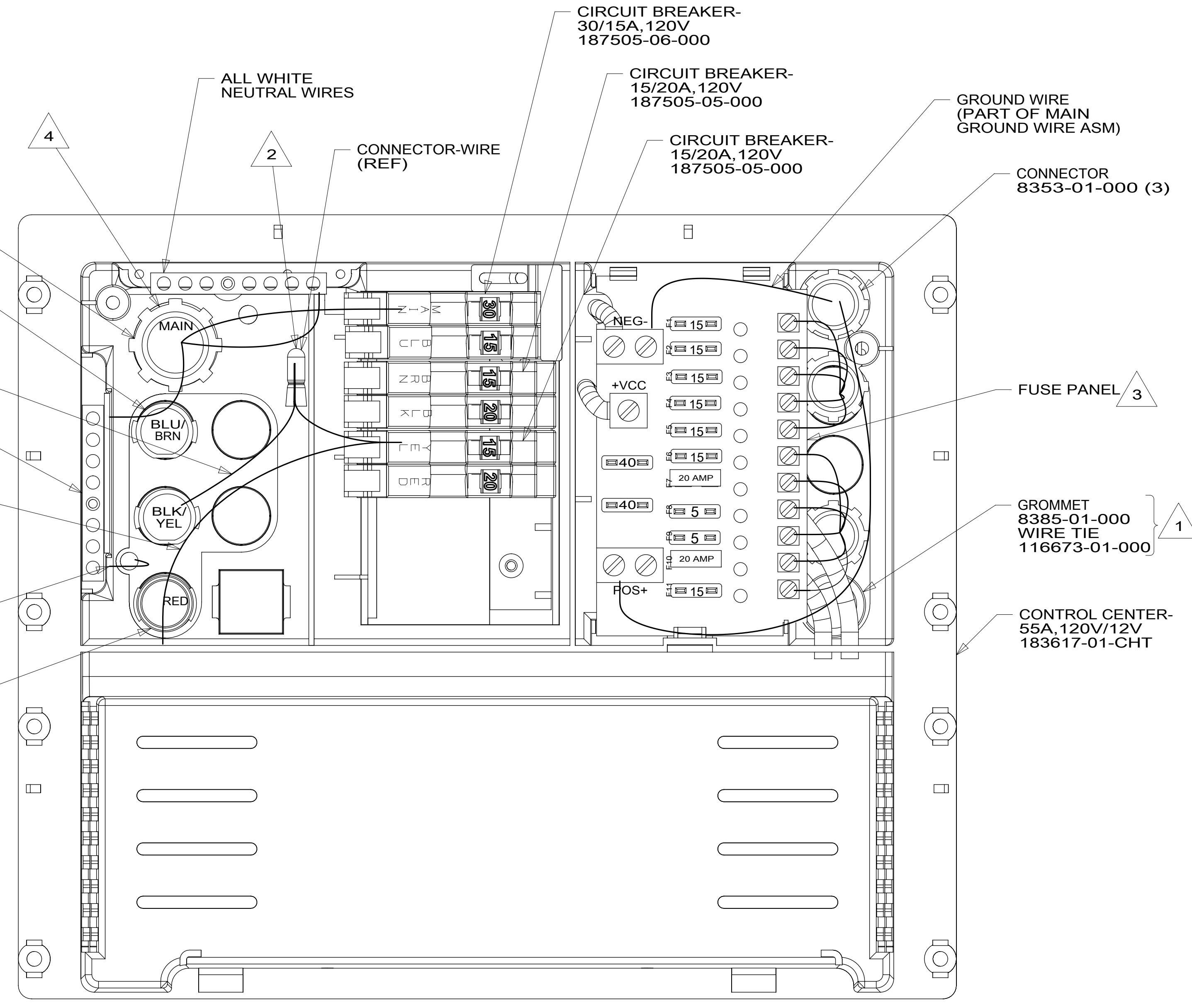
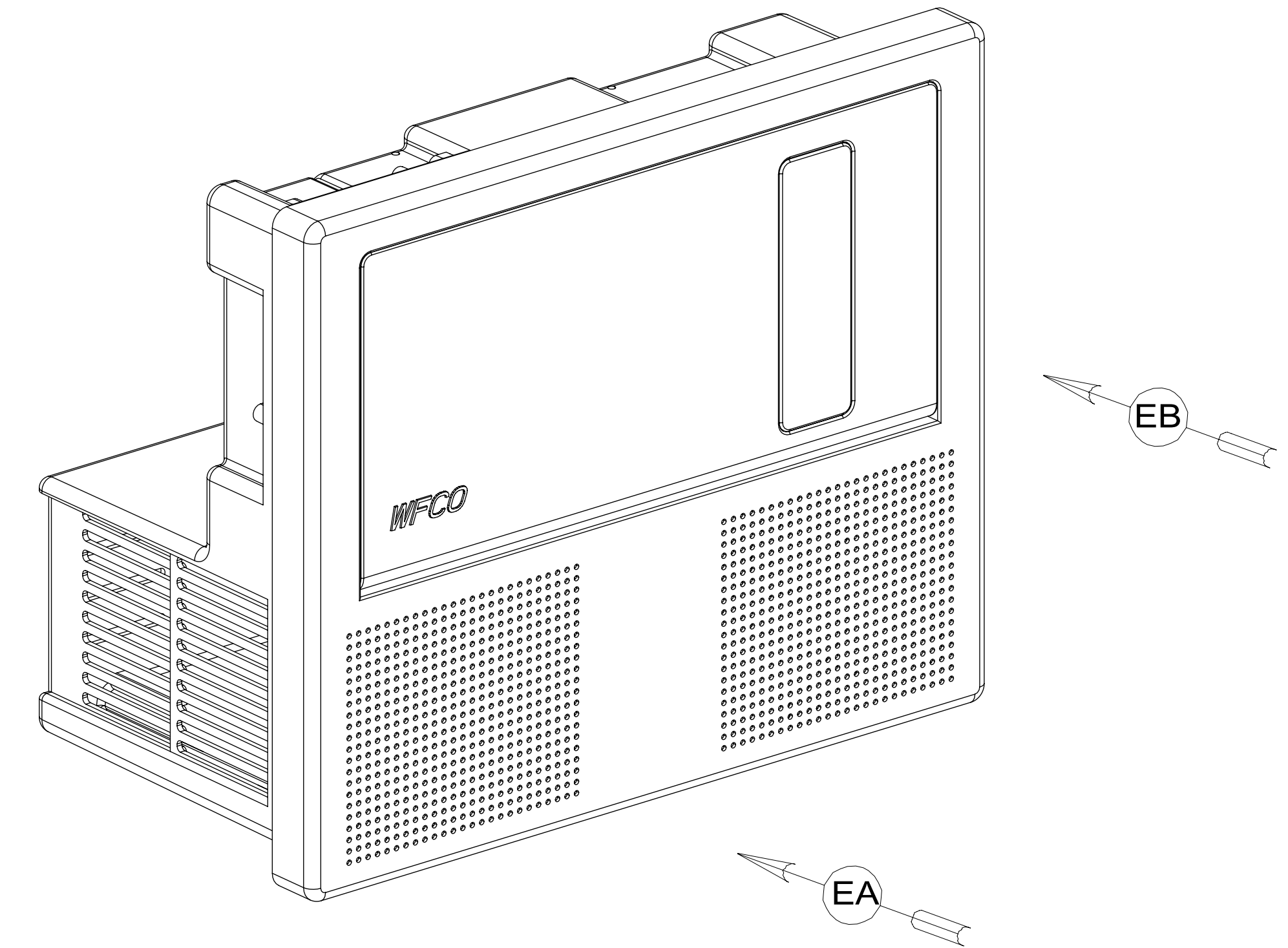
FOR ELECTRICAL TORQUE SPECIFICATIONS SEE DWG NO. 128783-01-000

FOR ELECTRICAL CALLOUTS SEE DWG NO. 121339-01-000

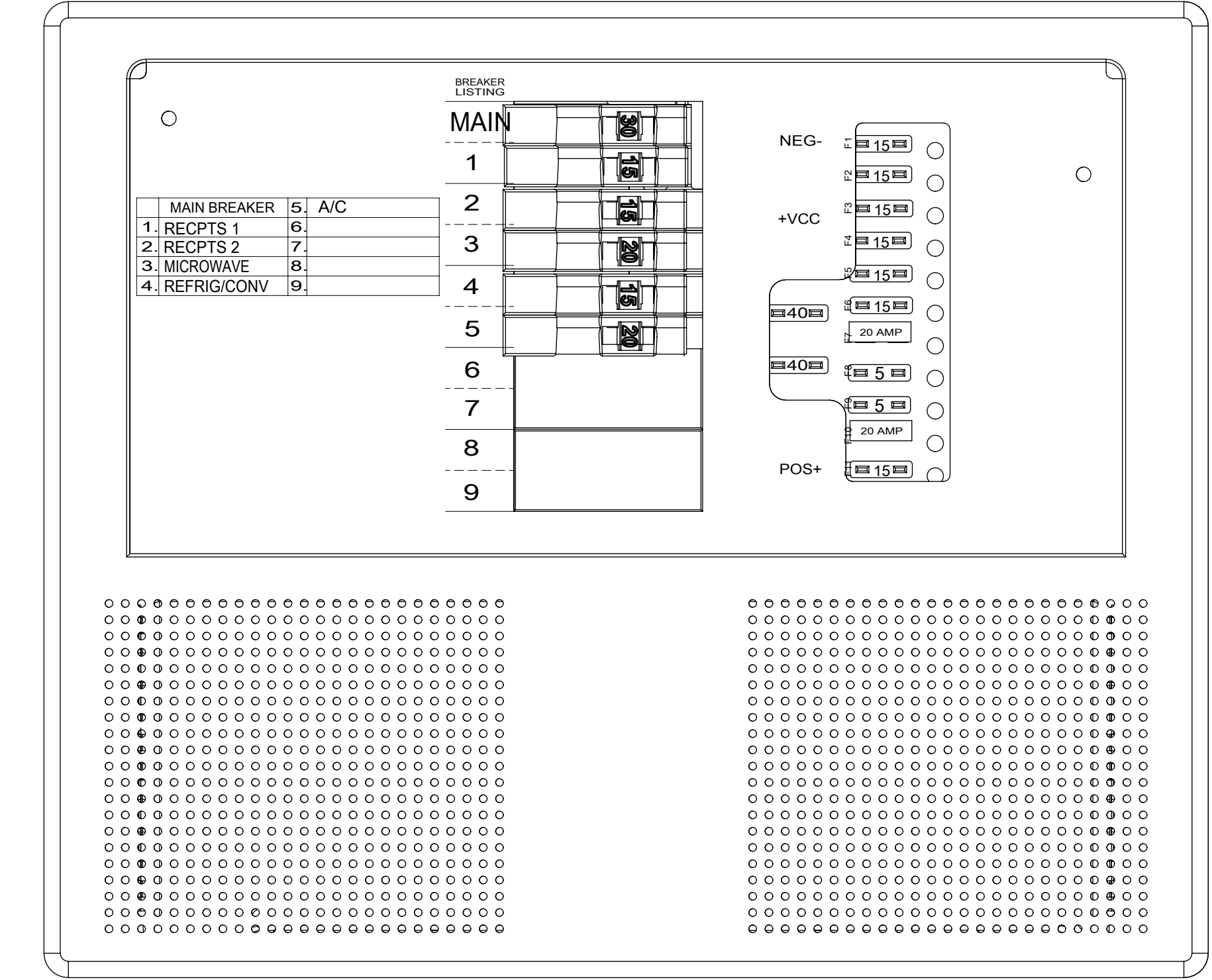
- 078 ALL WEATHER UPGRADE PACKAGE
- 78J ELECTRICAL SYSTEM-50 AMP
- 265 CODES/STANDARDS-CSA/CMVSS
- 1B1 CODES/STANDARDS USA

DESCRIPTION: <b>LOAD CENTER/ATS ASM</b>		
SHEET: 4 OF 5	ITEM/PART NO: 000214939 / 30362301000	REV

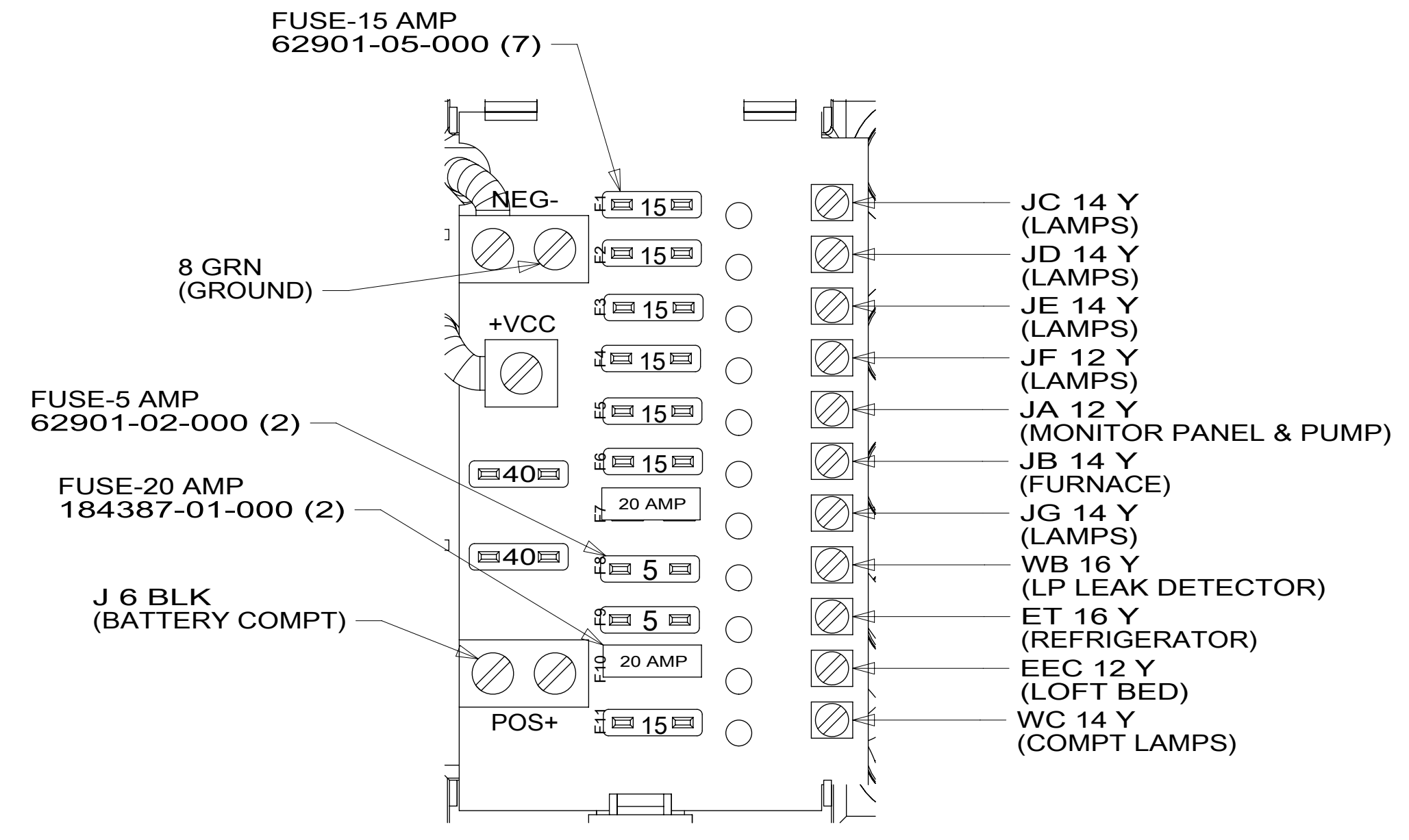
E30T WITH 078



VIEW EA  
(COVER REMOVED)



VIEW EB  
(DOOR REMOVED)



- NOTES:
- 4 TO BE CONNECTED DURING ASSEMBLY OF LOAD CENTER.
  - 3 SEE TAB BLOCK FOR MODEL SPECIFIC SHEETS.
  - 2 CONNECT CONVERTER POWER CIRCUIT INTO YELLOW BREAKER USE SUPPLIED WIRE NUT TO CONNECT TO YELLOW CIRCUIT WIRE.
  - 1 INSERT GROMMET FROM THE INSIDE OF CONTROL CENTER. SECURE 110V WIRES TO BACKSIDE OF CONTROL CENTER WITH WIRE TIE.

FOR ELECTRICAL TORQUE SPECIFICATIONS SEE DWG NO. 128783-01-000

FOR ELECTRICAL CALLOUTS SEE DWG NO. 121339-01-000

- 12D ELECTRICAL SYSTEM 30 AMP
- 265 CODES/STANDARDS-CSA/CMVSS
- 1B1 CODES/STANDARDS USA

DESCRIPTION:	LOAD CENTER/ATS ASM	
SHEET:	ITEM/PART NO.:	REV:
5 OF 5	000214939 / 30362301000	