

8 7 6 5 4 3 2 1



D

D

C

C

B

B

A

A

		E30T
CABLE ASM-CHASSIS GND EXT (BLK)		133566-12-032
CABLE ASM-CHASSIS BATTERY DISCONNECT SUPPLY (RED)		141415-32-034
CABLE ASM-COACH BATTERY DISCONNECT SUPPLY (YEL)		141416-52-040
CABLE ASM-COACH BATTERY GND (BLK)		133567-12-008
CABLE ASM-CHASSIS BATTERY DISCONNECT RETURN (PUR)		141415-12-028
CABLE ASM-GENERATOR (GRN)		141415-42-074
CABLE ASM-GENERATOR GND (BLK)	40N	133566-12-008
LEVELING SYSTEM POWER CABLE (BLU)	60M	141415-29-014
LEVELING SYSTEM GND CABLE (BLK)	60M	133566-12-008
WIRE ASM-INVERTER	401	154845-02-035
CABLE ASM-STARTER (RED)		141416-32-032
CABLE ASM-COACH BATTERY FUSE		141416-52-003
CABLE ASM-CHASSIS BATTERY FUSE		141415-32-003

- 40N GEN-4KW-ONAN GAS-MICROQUIET
- 401 INVERTER-DC/AC, 1000 WATT
- 60M HYDRAULIC LEVEL JACKS-AUTO
- 265 CODES/STANDARDS-CSA/CMVSS
- 1B1 CODES/STANDARDS USA

WINNEBAGO[®]
COPYRIGHT 2016 WINNEBAGO INDUSTRIES, INC.

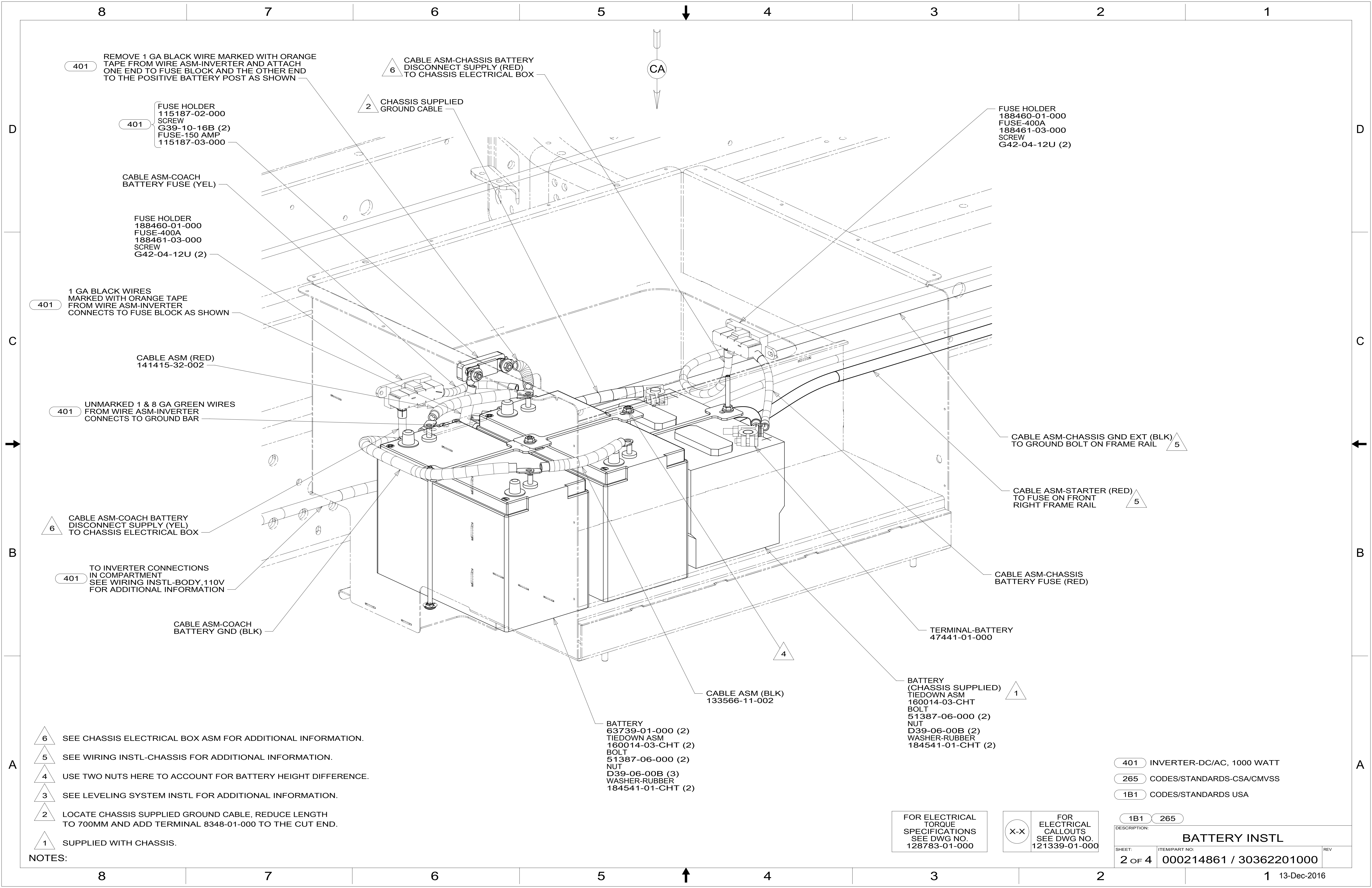
DSNR:		ALL DIMENSIONS ARE IN MILLIMETERS	
DIFFR:			
UNSPECIFIED TOLERANCES:	MATERIAL:		
WHOLE DIM (X) :		3	
ONE-PLACE (X.X) :		1.5	
TWO-PLACE (X.XX) :		0.50	
ANGLE :		1°	
REFER TO ES0018 FOR FASTENER TIGHTENING GUIDELINES		WEIGHT: (LBS)	FIRST USED:
			17 E30T
DESCRIPTION:			
BATTERY INSTL			
SHEET:	ITEM/PART NO.:	REV:	
1 OF 4	000214861 / 30362201000		
REF:		1 13-Dec-2016	

FOR ELECTRICAL TORQUE SPECIFICATIONS SEE DWG NO. 128783-01-000

FOR ELECTRICAL CALLOUTS SEE DWG NO. 121339-01-000

8 7 6 5 4 3 2 1





401 REMOVE 1 GA BLACK WIRE MARKED WITH ORANGE TAPE FROM WIRE ASM-INVERTER AND ATTACH ONE END TO FUSE BLOCK AND THE OTHER END TO THE POSITIVE BATTERY POST AS SHOWN

6 CABLE ASM-CHASSIS BATTERY DISCONNECT SUPPLY (RED) TO CHASSIS ELECTRICAL BOX

2 CHASSIS SUPPLIED GROUND CABLE

FUSE HOLDER
188460-01-000
FUSE-400A
188461-03-000
SCREW
G42-04-12U (2)

401 FUSE HOLDER
115187-02-000
SCREW
G39-10-16B (2)
FUSE-150 AMP
115187-03-000

CABLE ASM-COACH BATTERY FUSE (YEL)

FUSE HOLDER
188460-01-000
FUSE-400A
188461-03-000
SCREW
G42-04-12U (2)

401 1 GA BLACK WIRES MARKED WITH ORANGE TAPE FROM WIRE ASM-INVERTER CONNECTS TO FUSE BLOCK AS SHOWN

CABLE ASM (RED)
141415-32-002

401 UNMARKED 1 & 8 GA GREEN WIRES FROM WIRE ASM-INVERTER CONNECTS TO GROUND BAR

CABLE ASM-CHASSIS GND EXT (BLK) TO GROUND BOLT ON FRAME RAIL 5

CABLE ASM-STARTER (RED) TO FUSE ON FRONT RIGHT FRAME RAIL 5

6 CABLE ASM-COACH BATTERY DISCONNECT SUPPLY (YEL) TO CHASSIS ELECTRICAL BOX

401 TO INVERTER CONNECTIONS IN COMPARTMENT SEE WIRING INSTL-BODY, 110V FOR ADDITIONAL INFORMATION

CABLE ASM-CHASSIS BATTERY FUSE (RED)

CABLE ASM-COACH BATTERY GND (BLK)

TERMINAL-BATTERY
47441-01-000

CABLE ASM (BLK)
133566-11-002

1 BATTERY (CHASSIS SUPPLIED)
TIEDOWN ASM
160014-03-CHT
BOLT
51387-06-000 (2)
NUT
D39-06-00B (2)
WASHER-RUBBER
184541-01-CHT (2)

BATTERY
63739-01-000 (2)
TIEDOWN ASM
160014-03-CHT (2)
BOLT
51387-06-000 (2)
NUT
D39-06-00B (3)
WASHER-RUBBER
184541-01-CHT (2)

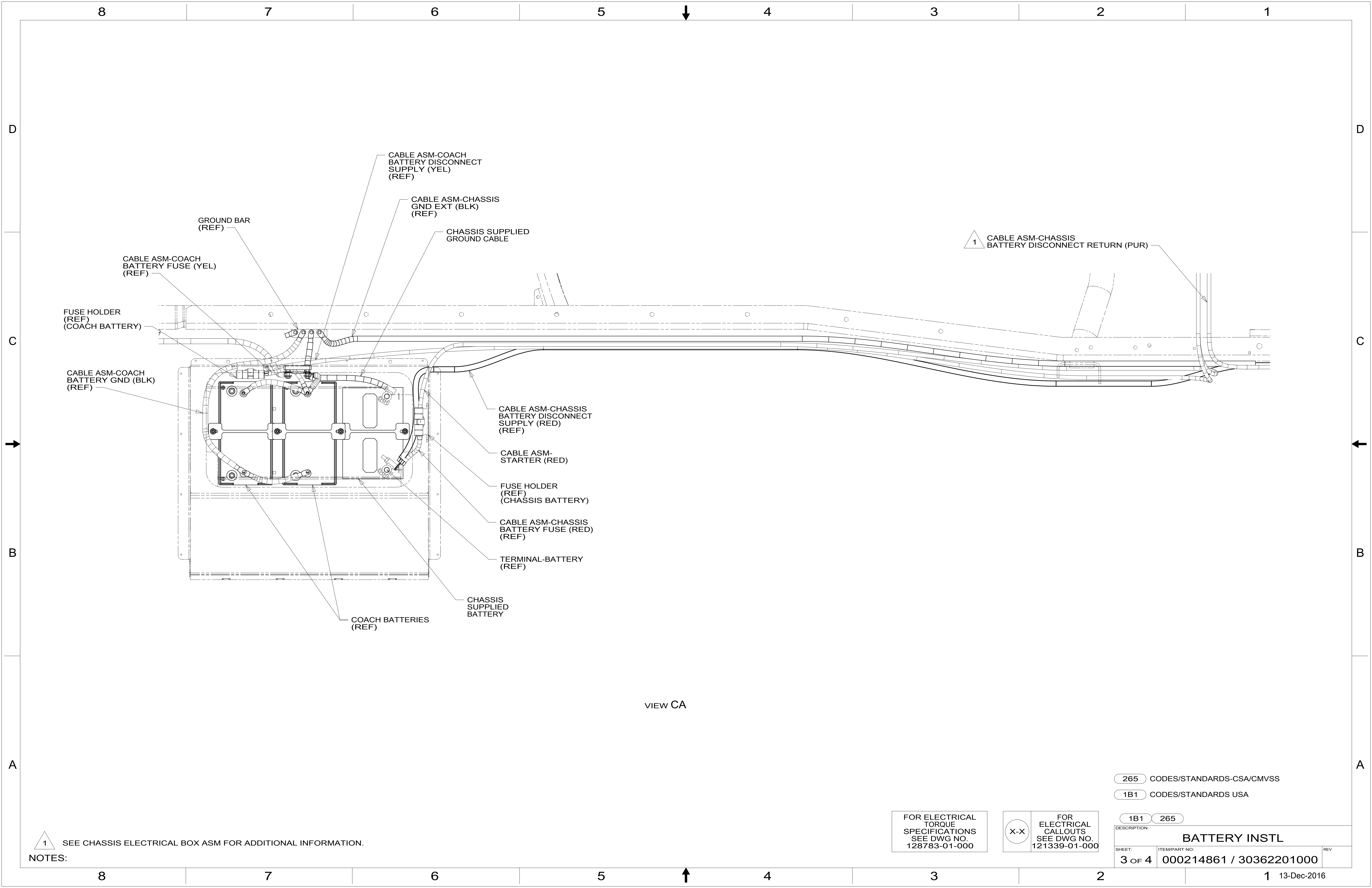
- NOTES:
- 6 SEE CHASSIS ELECTRICAL BOX ASM FOR ADDITIONAL INFORMATION.
 - 5 SEE WIRING INSTL-CHASSIS FOR ADDITIONAL INFORMATION.
 - 4 USE TWO NUTS HERE TO ACCOUNT FOR BATTERY HEIGHT DIFFERENCE.
 - 3 SEE LEVELING SYSTEM INSTL FOR ADDITIONAL INFORMATION.
 - 2 LOCATE CHASSIS SUPPLIED GROUND CABLE, REDUCE LENGTH TO 700MM AND ADD TERMINAL 8348-01-000 TO THE CUT END.
 - 1 SUPPLIED WITH CHASSIS.

FOR ELECTRICAL TORQUE SPECIFICATIONS SEE DWG NO. 128783-01-000

FOR ELECTRICAL CALLOUTS SEE DWG NO. 121339-01-000

- 401 INVERTER-DC/AC, 1000 WATT
- 265 CODES/STANDARDS-CSA/CMVSS
- 1B1 CODES/STANDARDS USA

DESCRIPTION:		1B1 265	
BATTERY INSTL			
SHEET:	ITEM/PART NO.:	REV	
2 OF 4	000214861 / 30362201000		



VIEW CA

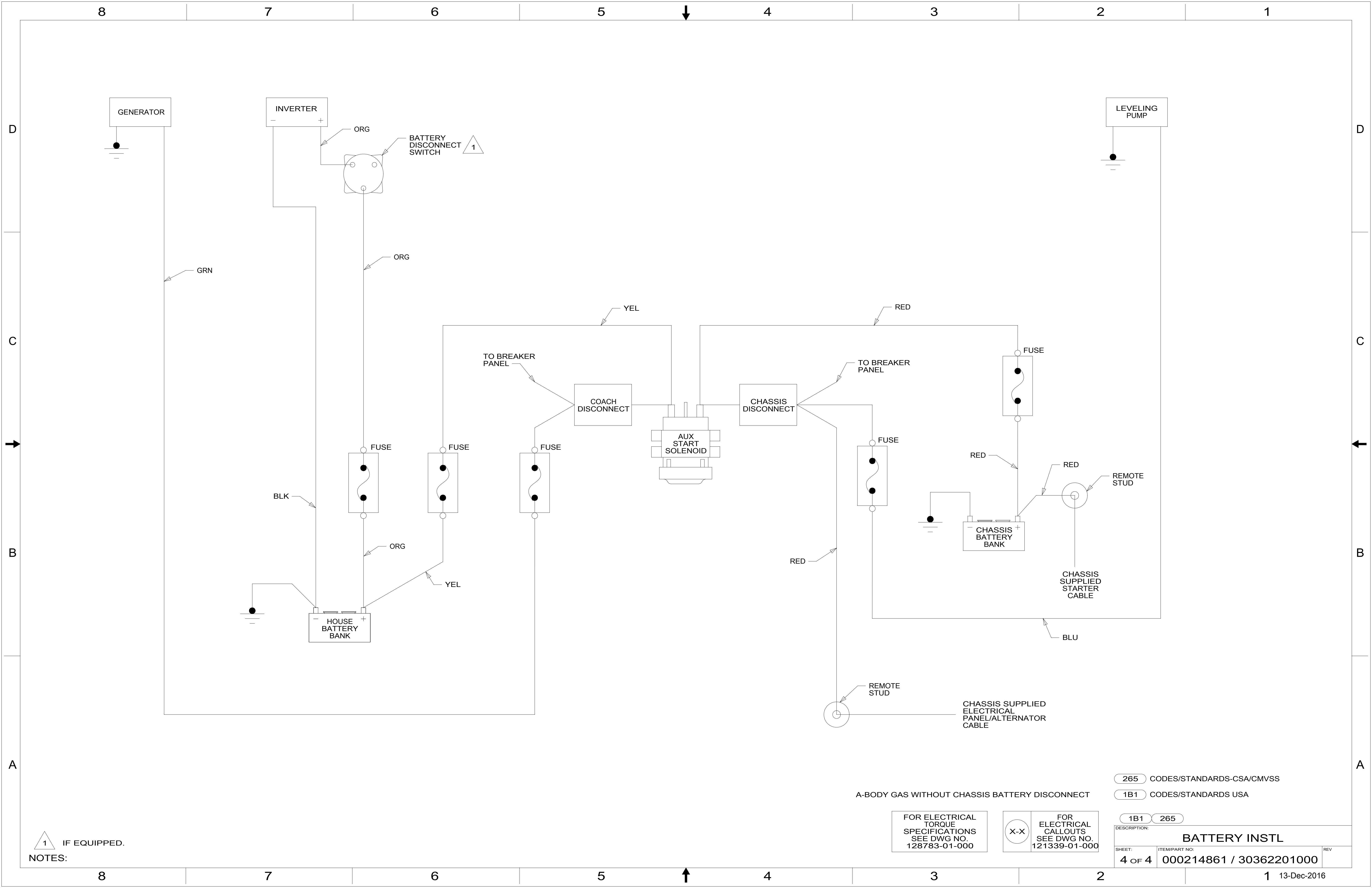
1 SEE CHASSIS ELECTRICAL BOX ASM FOR ADDITIONAL INFORMATION.

FOR ELECTRICAL TORQUE SPECIFICATIONS SEE DWG NO. 128783-01-000

FOR ELECTRICAL CALLOUTS SEE DWG NO. 121339-01-000

- 265 CODES/STANDARDS-CSA/CMVSS
- 1B1 CODES/STANDARDS USA

DESCRIPTION:		1B1 265	
BATTERY INSTL			
SHEET:	ITEM/PART NO.:	REV	
3 OF 4	000214861 / 30362201000		



NOTES:
 1 IF EQUIPPED.

A-BODY GAS WITHOUT CHASSIS BATTERY DISCONNECT

FOR ELECTRICAL TORQUE SPECIFICATIONS SEE DWG NO. 128783-01-000

FOR ELECTRICAL CALLOUTS SEE DWG NO. 121339-01-000

- 265 CODES/STANDARDS-CSA/CMVSS
- 1B1 CODES/STANDARDS USA

DESCRIPTION: BATTERY INSTL		
SHEET: 4 OF 4	ITEM/PART NO: 000214861 / 30362201000	REV