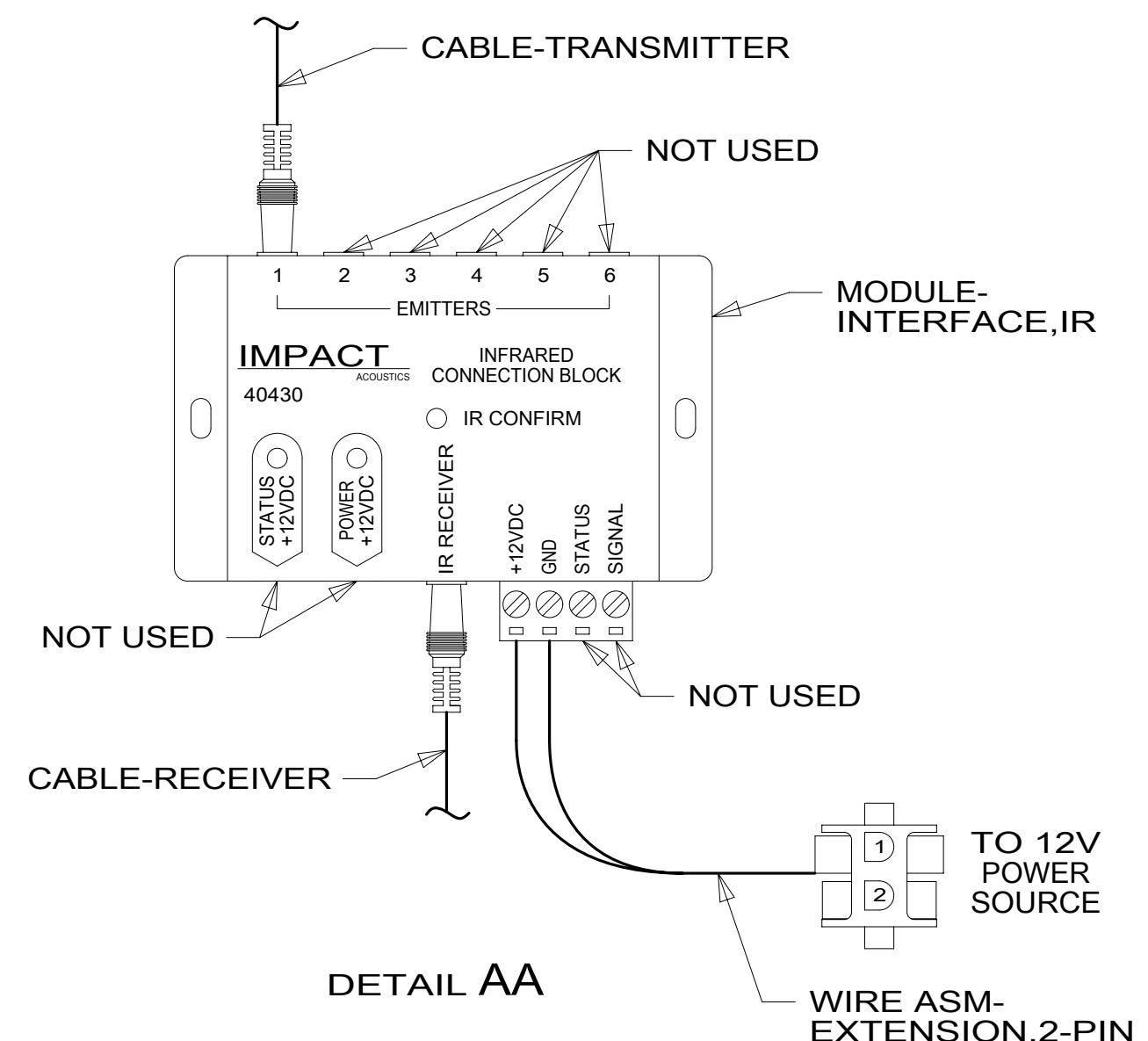
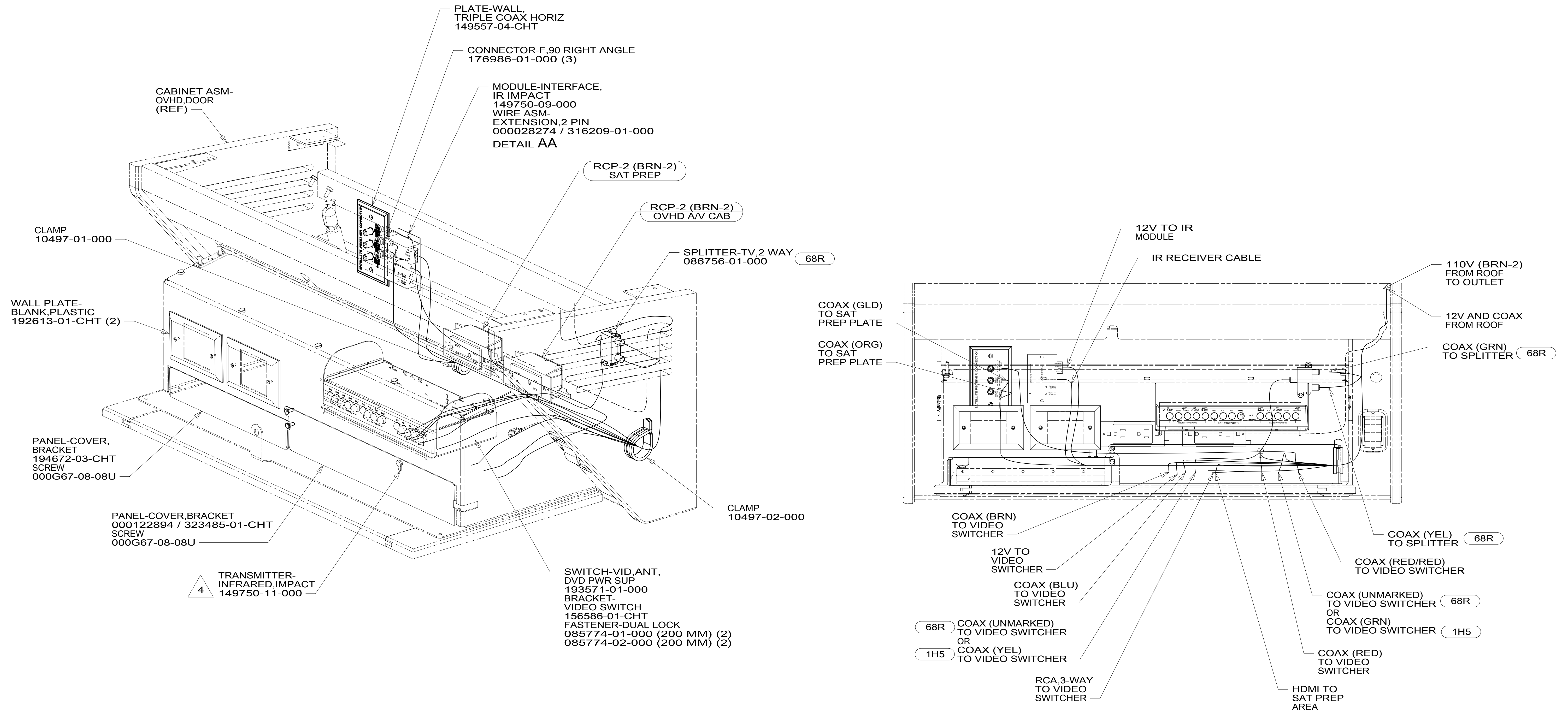


8 7 6 5 4 3 2 1



- 4 TAPE IR TRANSMITTER TO BACK OF COVER PANEL 194672-02-CHT USING TAPE 8363-01-000.
3. WHERE WIRES PASS THROUGH HOLES IN STEEL AND NOT OTHERWISE PROTECTED, USE GROMMET 92908-02-000.
2. ALL WIRES TO BE SECURED WITH CLAMP 10495-01-000 OR CLIP 80734-01-000 EVERY 600 MM. USE SCREW G67-10-12U UNLESS OTHERWISE SPECIFIED.
1. 110V WIRE TO BE CLAMPED WITH CLAMP 10497-05-000 WITHIN 200MM OF OUTLET BOXES, USE SCREW G67-10-12U.

NOTES:

FOR ELECTRICAL TORQUE SPECIFICATIONS SEE DWG NO. 128783-01-000

FOR ELECTRICAL CALLOUTS SEE DWG NO. 121339-01-000

- 68R TV - FRONT
- 1H5 TV, FRONT-WITHOUT
- 265 CODES/STANDARDS-CSA/CMVSS
- 1B1 CODES/STANDARDS USA

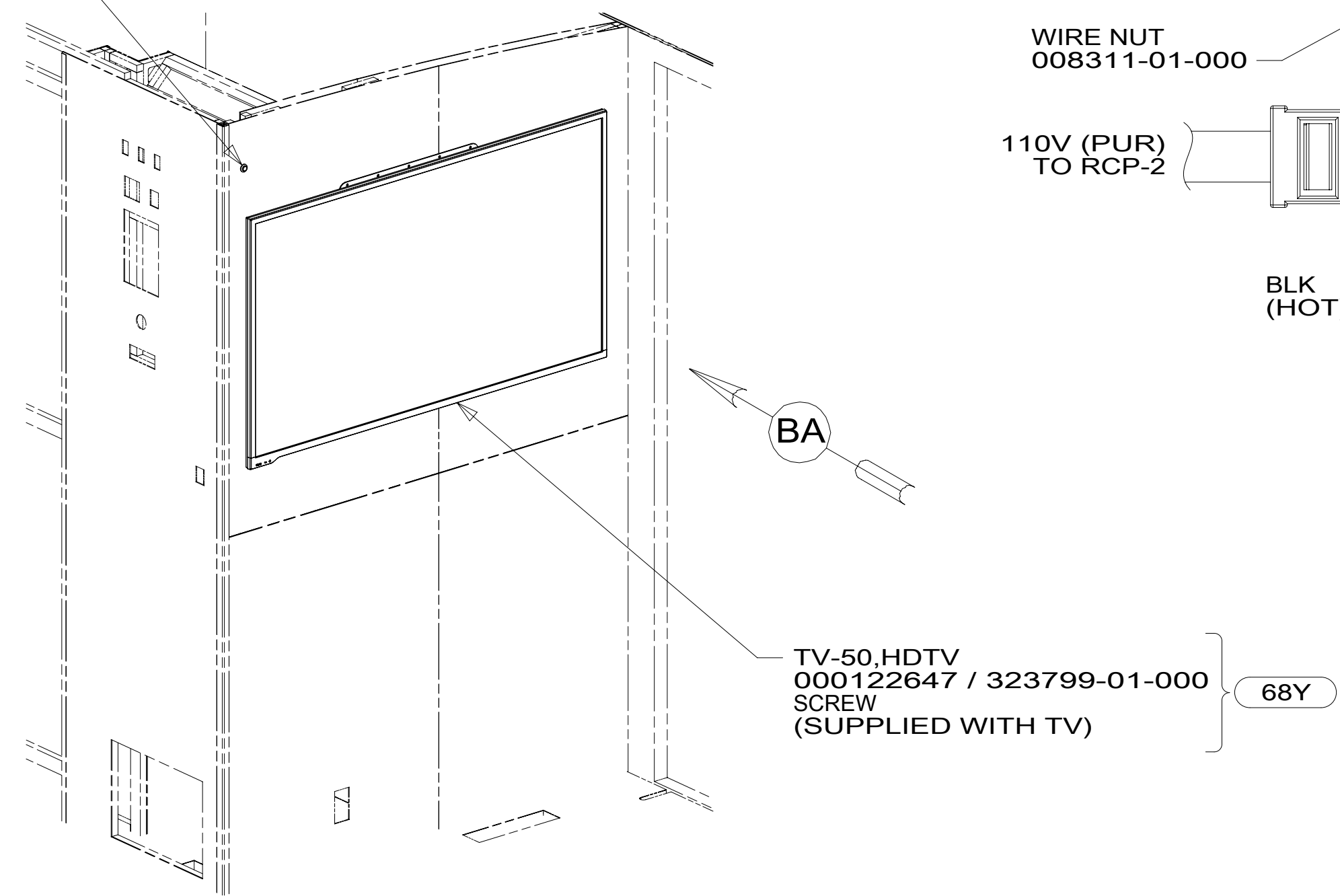
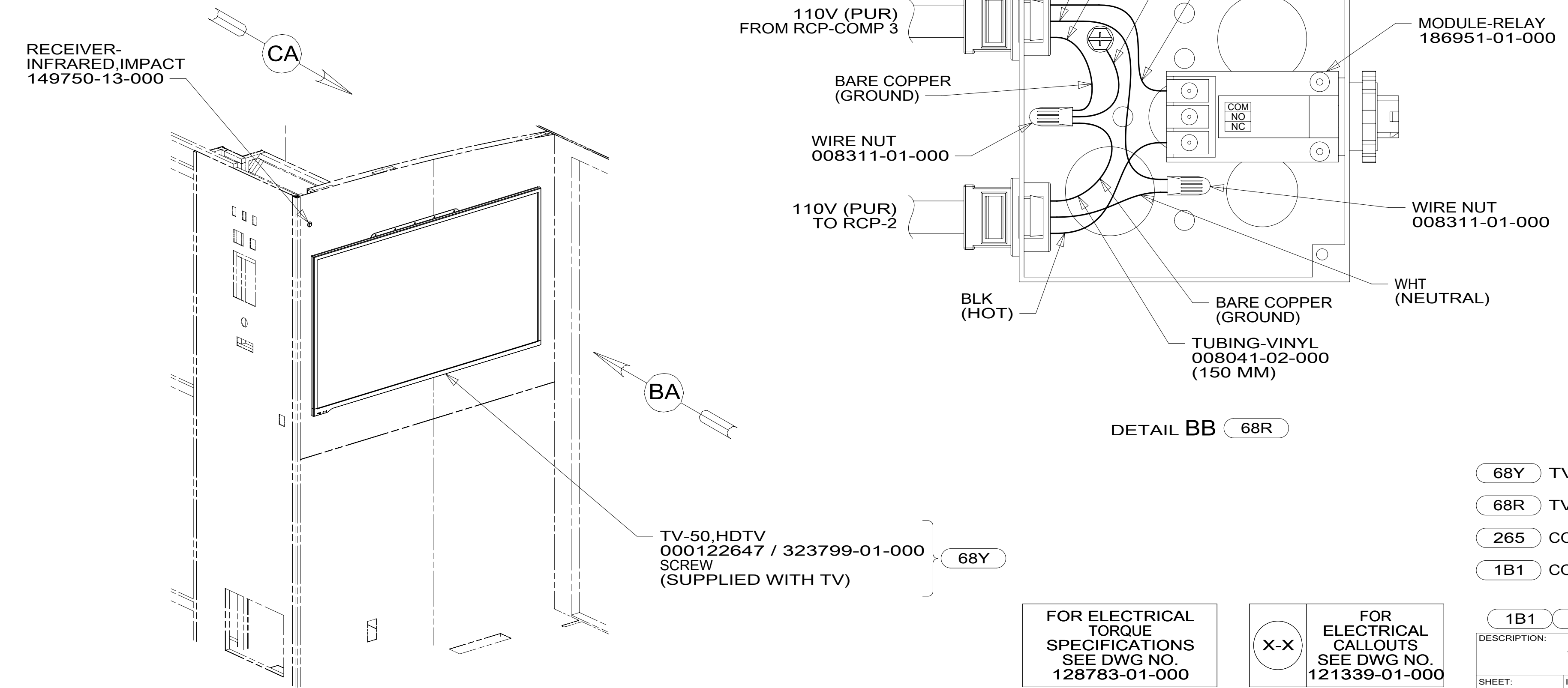
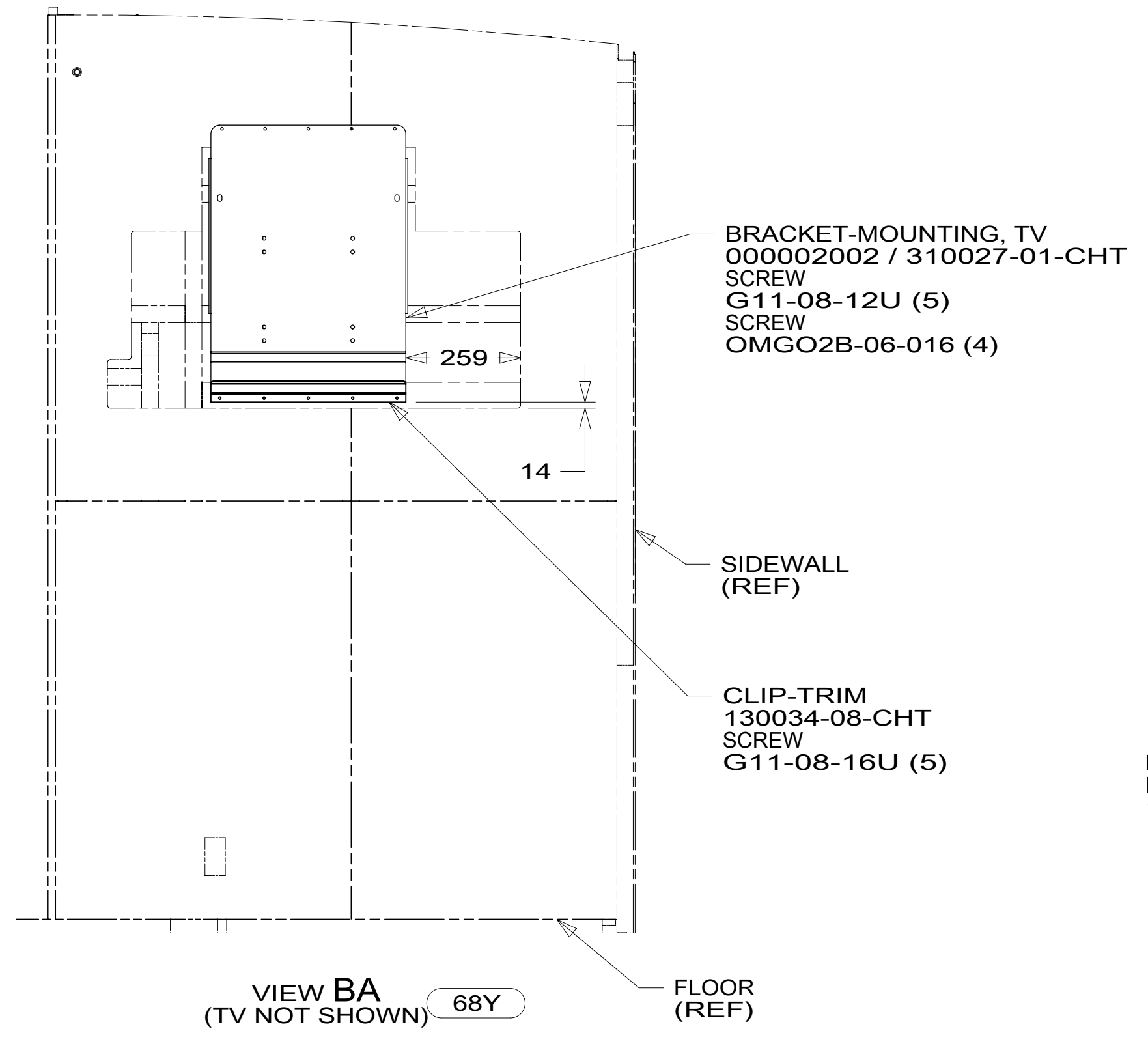
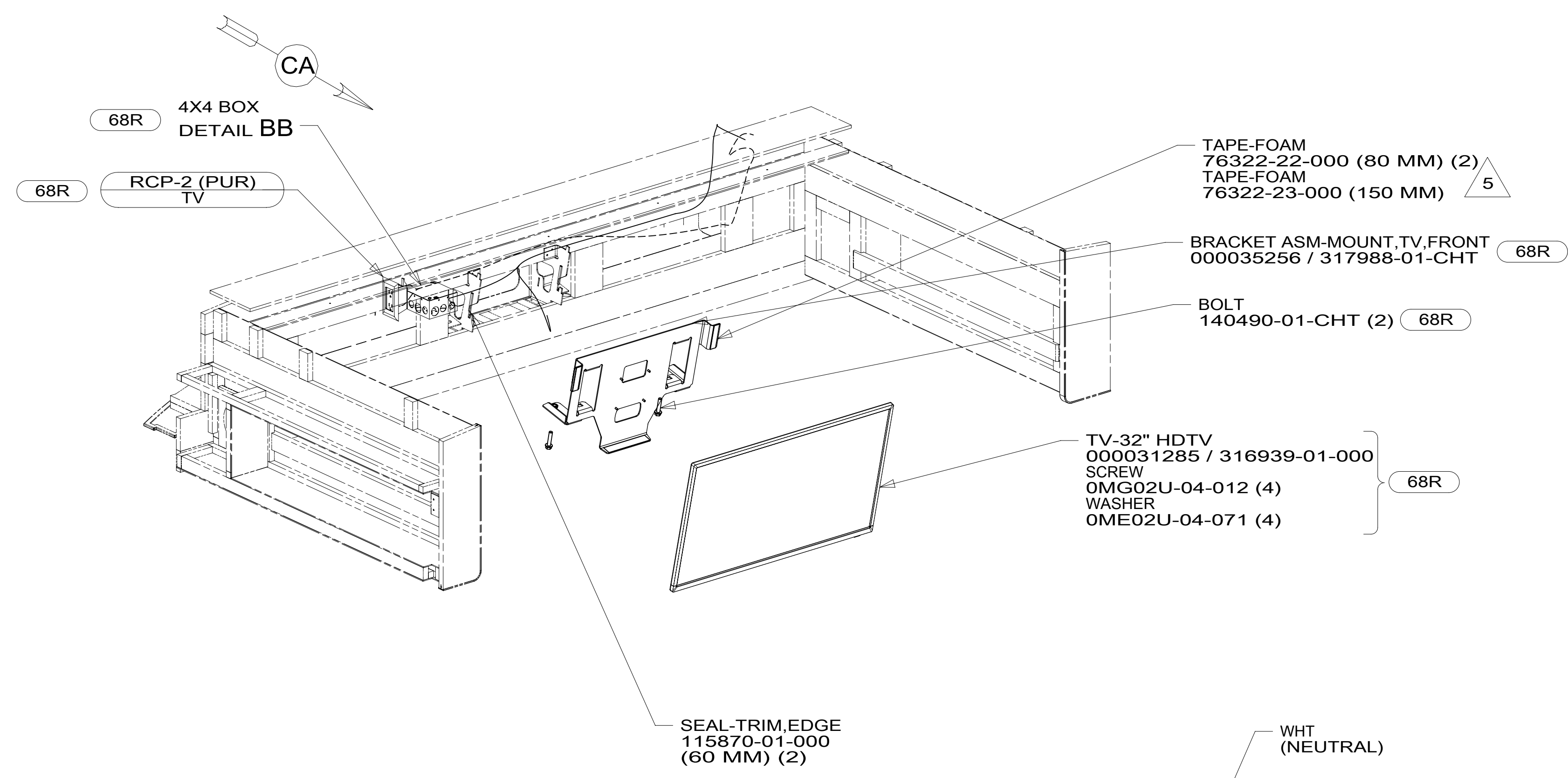
1B1 265

**WINNEBAGO**  
COPYRIGHT 2016 WINNEBAGO INDUSTRIES, INC.

DSNR:	ALL DIMENSIONS ARE IN MILLIMETERS	
DIFFR:		
UNSPECIFIED TOLERANCES:	MATERIAL:	
WHOLE DIM (X) : 3		
ONE-PLACE (X.X) : 1.5		
TWO-PLACE (X.XX) : 0.50		
ANGLE : 1°		
REFER TO ES0018 FOR FASTENER TIGHTENING GUIDELINES	WEIGHT: (LBS)	FIRST USED: 17 E27N
DESCRIPTION: <b>WIRING INSTL-TV/DVD</b>		
SHEET: 1 OF 4	ITEM/PART NO: 000213816 / 30292101000	REV

REF: 1 07-Nov-2017

8 7 6 5 4 3 2 1



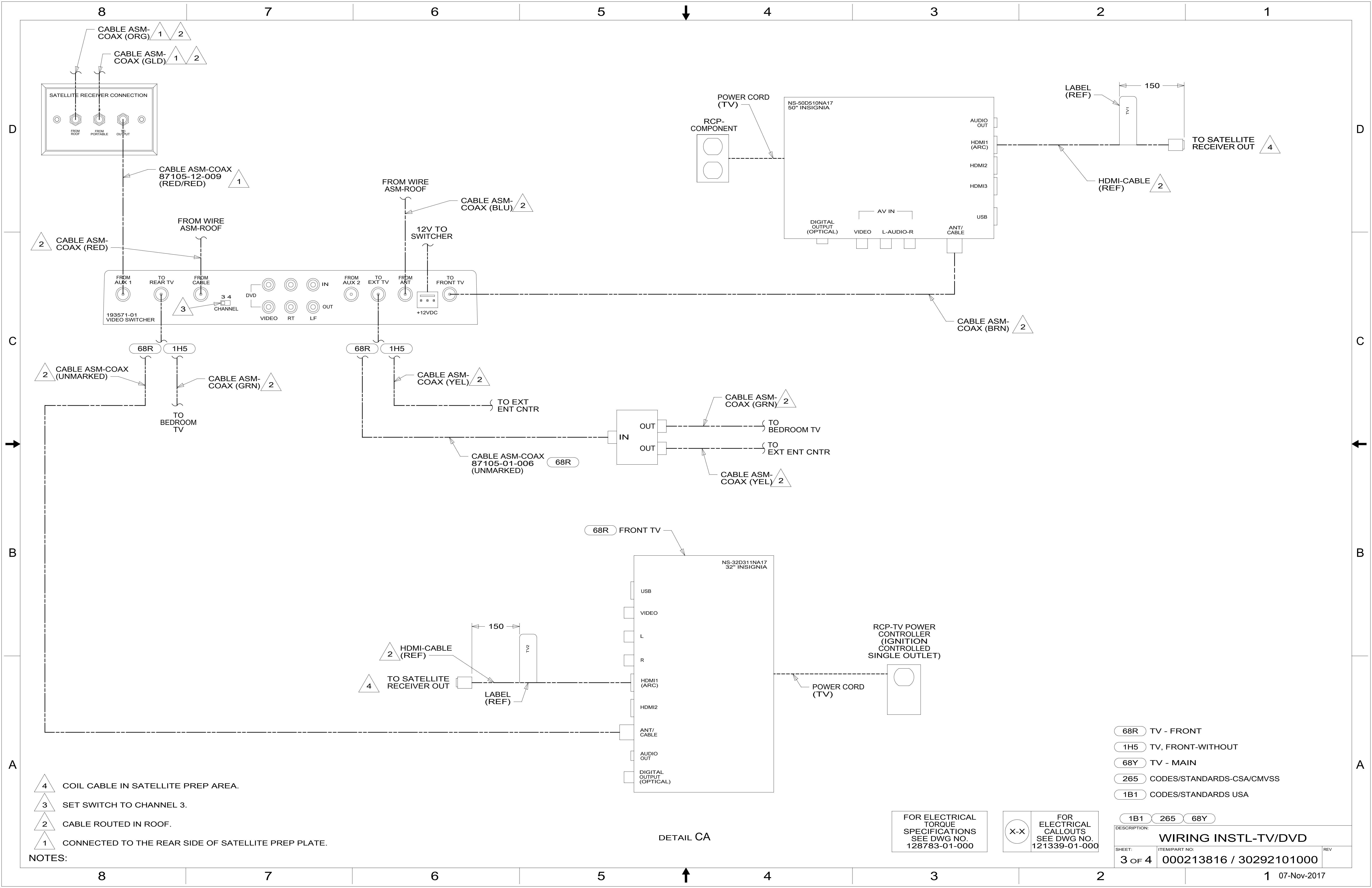
- NOTES:
- 6 SEE LOAD CENTER/ATS ASM FOR ADDITIONAL INFORMATION.
  - 5 PREP BOTH SURFACES WITH ADHESIVE-PROMOTER, 087211-01-000.
  - 4 ROUTE 110V & 12V IN OPPOSITE ENDS OF ELECTRICAL BOX.
  - 3. WHERE WIRES PASS THROUGH HOLES IN STEEL AND NOT OTHERWISE PROTECTED, USE GROMMET 92908-02-000.
  - 2. AT MINIMUM ALL WIRES TO BE SUPPORTED AND SECURED PER CODE REQUIREMENTS. USE CLAMP 10495 OR 10497 OR WIRE TIE 8343 OR 108046 AND SCREW G67-XX-XXX OR G56-XX-XXX AS APPROPRIATE FOR INSTALLATION.
  - 1. 110V WIRE TO BE CLAMPED WITH CLAMP 10497-05-000 WITHIN 200MM OF OUTLET BOXES, USE SCREW G67-10-12B.

FOR ELECTRICAL TORQUE SPECIFICATIONS SEE DWG NO. 128783-01-000

FOR ELECTRICAL CALLOUTS SEE DWG NO. 121339-01-000

- 68Y TV - MAIN
- 68R TV - FRONT
- 265 CODES/STANDARDS-CSA/CMVSS
- 1B1 CODES/STANDARDS USA

DESCRIPTION:		1B1 265	
<b>WIRING INSTL-TV/DVD</b>			
SHEET:	ITEM/PART NO.:	REV	
2 OF 4	000213816 / 30292101000		



- NOTES:
- 4 COIL CABLE IN SATELLITE PREP AREA.
  - 3 SET SWITCH TO CHANNEL 3.
  - 2 CABLE ROUTED IN ROOF.
  - 1 CONNECTED TO THE REAR SIDE OF SATELLITE PREP PLATE.

DETAIL CA

FOR ELECTRICAL TORQUE SPECIFICATIONS SEE DWG NO. 128783-01-000

FOR ELECTRICAL CALLOUTS SEE DWG NO. 121339-01-000

- 68R TV - FRONT
- 1H5 TV, FRONT-WITHOUT
- 68Y TV - MAIN
- 265 CODES/STANDARDS-CSA/CMVSS
- 1B1 CODES/STANDARDS USA

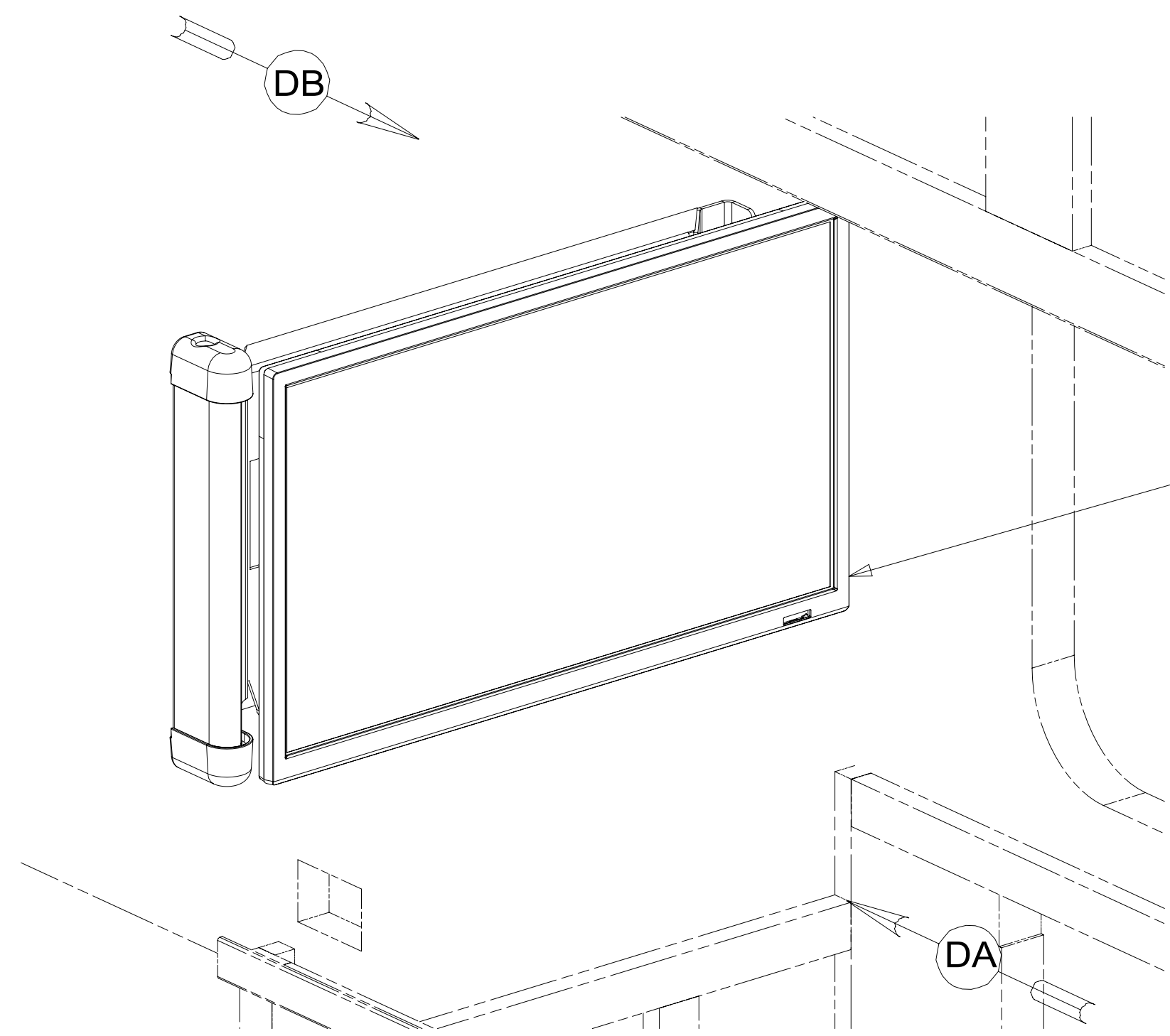
DESCRIPTION:		
1B1 265 68Y		
WIRING INSTL-TV/DVD		
SHEET:	ITEM/PART NO.:	REV:
3 OF 4	000213816 / 30292101000	

8 7 6 5 4 3 2 1

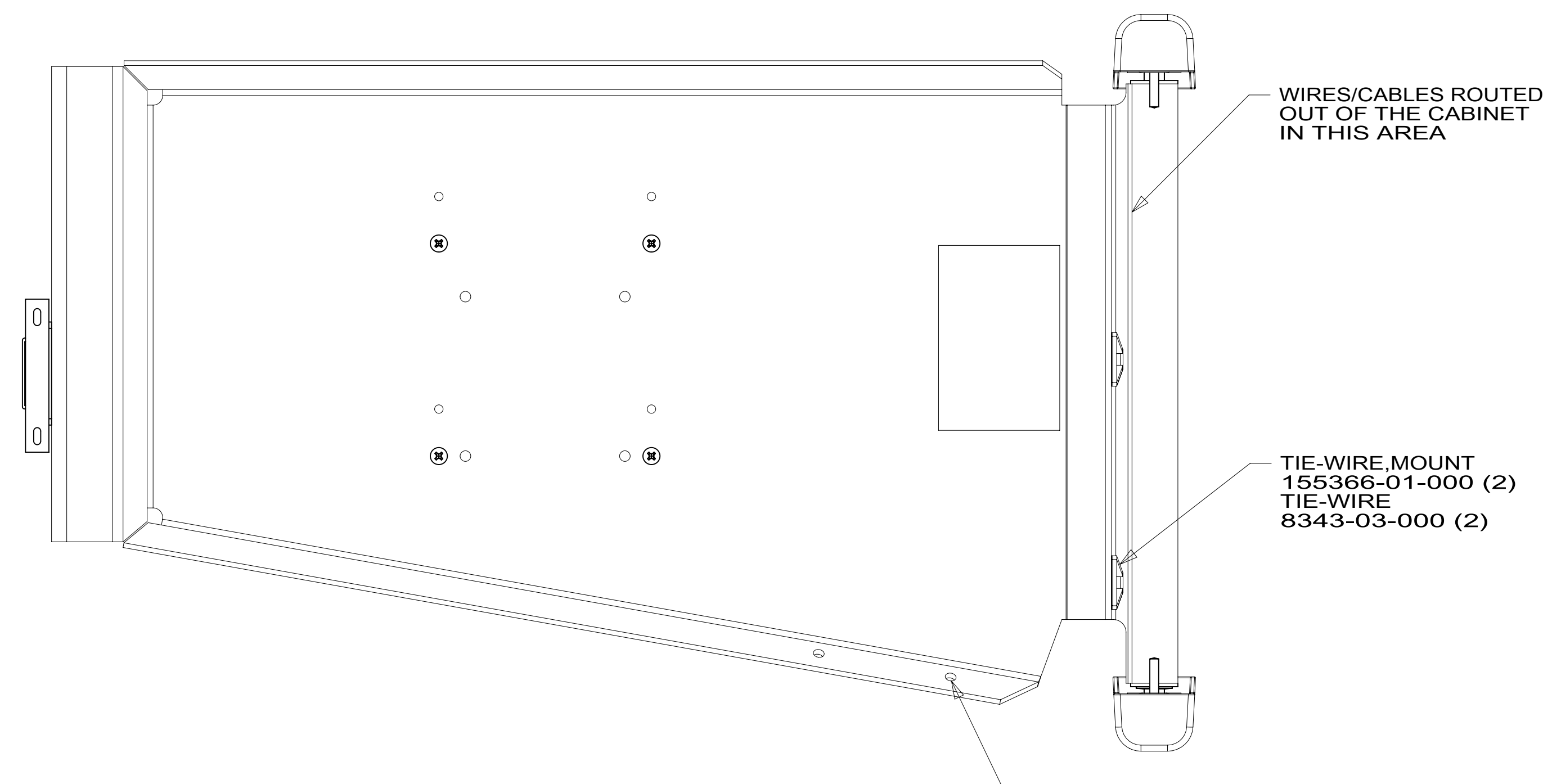


D  
C  
B  
A

D  
C  
B  
A



TV-24" HDTV, 110 VAC  
000032947 / 317377-01-000  
BRACKET ASM-MOUNT,TV  
000033449 / 317568-01-XXX  
SCREW  
OMG02U-04-012 (4)  
WASHER  
OME02U-04-071 (4)  
SCREW  
G39-10-16U (5)

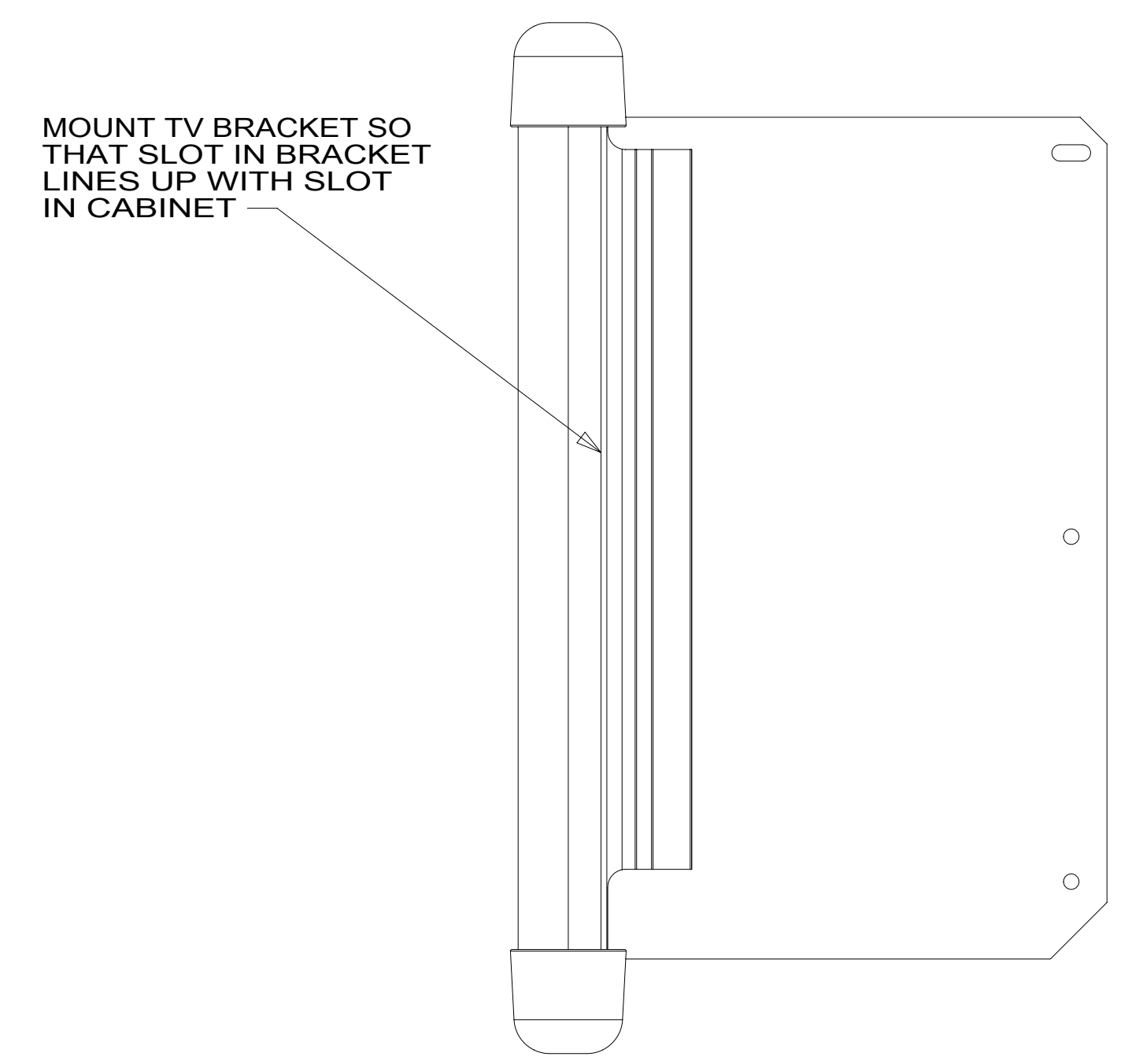


WIRES/CABLES ROUTED OUT OF THE CABINET IN THIS AREA

TIE-WIRE, MOUNT  
155366-01-000 (2)  
TIE-WIRE  
8343-03-000 (2)

TIE-WIRE  
8343-02-000 1

VIEW DB



MOUNT TV BRACKET SO THAT SLOT IN BRACKET LINES UP WITH SLOT IN CABINET

VIEW DA

1 USE HOLES IN BRACKET ASM-MOUNT,TV TO ATTACH WIRE ASM TO BRACKET ASM-MOUNT,TV WITH WIRE TIES.

NOTES:

8 7 6 5 4 3 2 1



- 68X TV - BEDROOM
- 265 CODES/STANDARDS-CSA/CMVSS
- 1B1 CODES/STANDARDS USA

1B1 265 68X

FOR ELECTRICAL TORQUE SPECIFICATIONS SEE DWG NO. 128783-01-000

FOR ELECTRICAL CALLOUTS SEE DWG NO. 121339-01-000

DESCRIPTION: <b>WIRING INSTL-TV/DVD</b>		
SHEET: <b>4 OF 4</b>	ITEM/PART NO.: <b>000213816 / 30292101000</b>	REV