

8 7 6 5 4 3 2 1



D

D

C

C

B

B

A

A

		E27N
CABLE ASM-CHASSIS GND EXT (BLK)		133566-12-011
CABLE ASM-CHASSIS BATTERY DISCONNECT SUPPLY (RED)		141415-32-028
CABLE ASM-COACH BATTERY DISCONNECT SUPPLY (YEL)		141416-52-024
CABLE ASM-COACH BATTERY GND (BLK)		133567-12-008
CABLE ASM-CHASSIS BATTERY DISCONNECT RETURN (PUR)		141415-12-028
CABLE ASM-GENERATOR (GRN)		141415-42-067
CABLE ASM-GENERATOR GND (BLK)		133566-12-008
LEVELING SYSTEM POWER CABLE (BLU)	60M	141415-29-015
LEVELING SYSTEM GND CABLE (BLK)	60M	133566-12-008
WIRE ASM-INVERTER	401	154845-02-027
CABLE ASM-STARTER (RED)		141416-32-010
CABLE ASM-COACH BATTERY FUSE		141416-52-003
CABLE ASM-CHASSIS BATTERY FUSE		141415-32-003

- 60M HYDRAULIC LEVEL JACKS-AUTO
- 401 INVERTER-DC/AC, 1000 WATT
- 265 CODES/STANDARDS-CSA/CMVSS
- 1B1 CODES/STANDARDS USA

1B1 265



DSNR:		ALL DIMENSIONS ARE IN MILLIMETERS	
DIFFR:			
UNSPECIFIED TOLERANCES:		MATERIAL:	
WHOLE DIM (X)	3		
ONE-PLACE (X.X)	1.5		
TWO-PLACE (X.XX)	0.50		
ANGLE	1°		
REFER TO ES0018 FOR FASTENER TIGHTENING GUIDELINES	WEIGHT: (LBS)	FIRST USED:	17 E27N

FOR ELECTRICAL TORQUE SPECIFICATIONS SEE DWG NO. 128783-01-000

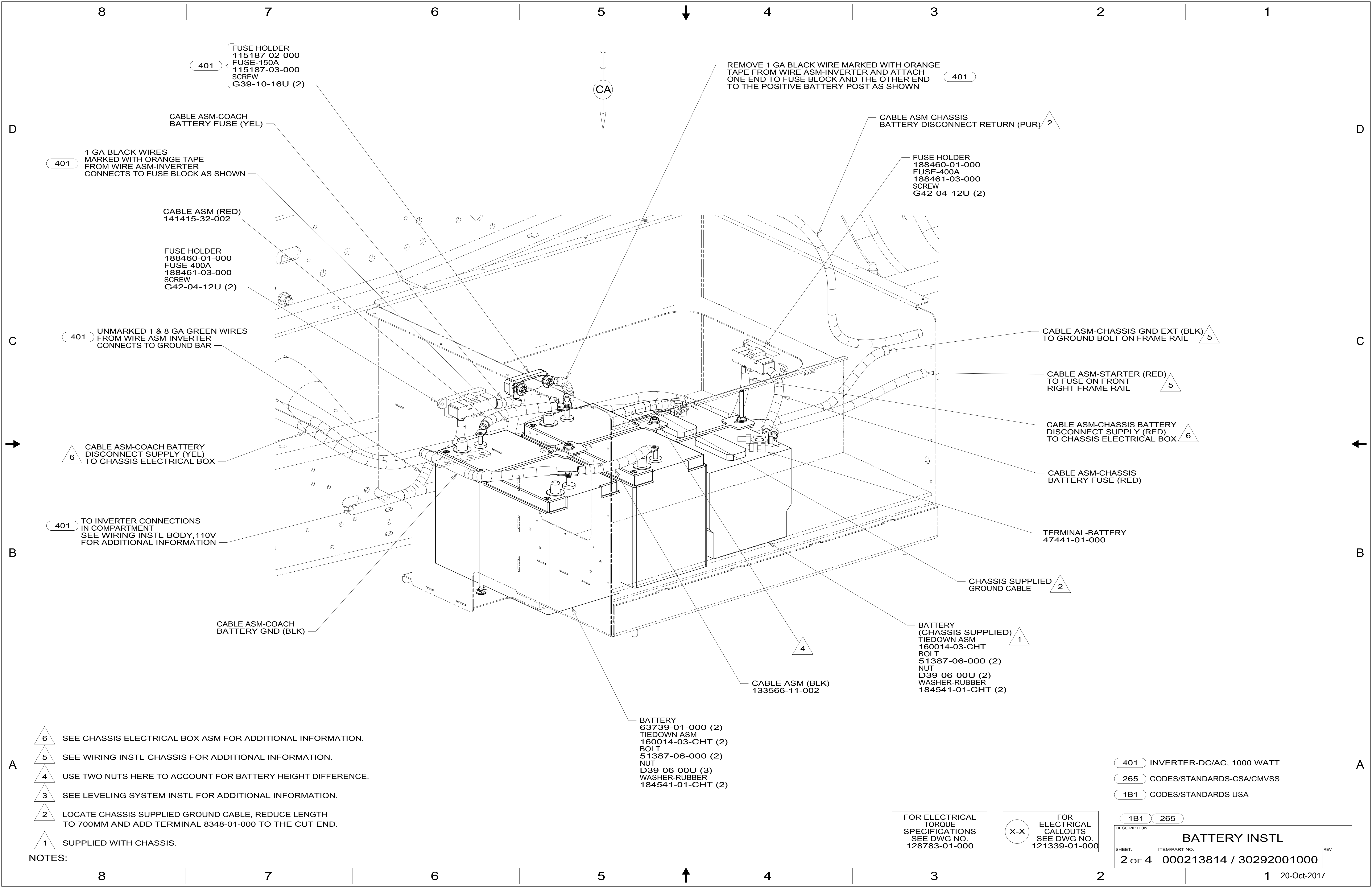
FOR ELECTRICAL CALLOUTS SEE DWG NO. 121339-01-000

DESCRIPTION: **BATTERY INSTL**

SHEET: 1 OF 4 ITEM/PART NO: 000213814 / 30292001000 REF: 1 20-Oct-2017

8 7 6 5 4 3 2 1





401 FUSE HOLDER  
115187-02-000  
FUSE-150A  
115187-03-000  
SCREW  
G39-10-16U (2)

REMOVE 1 GA BLACK WIRE MARKED WITH ORANGE TAPE FROM WIRE ASM-INVERTER AND ATTACH ONE END TO FUSE BLOCK AND THE OTHER END TO THE POSITIVE BATTERY POST AS SHOWN 401

CABLE ASM-CHASSIS BATTERY DISCONNECT RETURN (PUR) 2

FUSE HOLDER  
188460-01-000  
FUSE-400A  
188461-03-000  
SCREW  
G42-04-12U (2)

401 1 GA BLACK WIRES MARKED WITH ORANGE TAPE FROM WIRE ASM-INVERTER CONNECTS TO FUSE BLOCK AS SHOWN

CABLE ASM (RED)  
141415-32-002

FUSE HOLDER  
188460-01-000  
FUSE-400A  
188461-03-000  
SCREW  
G42-04-12U (2)

401 UNMARKED 1 & 8 GA GREEN WIRES FROM WIRE ASM-INVERTER CONNECTS TO GROUND BAR

CABLE ASM-CHASSIS GND EXT (BLK) TO GROUND BOLT ON FRAME RAIL 5

CABLE ASM-STARTER (RED) TO FUSE ON FRONT RIGHT FRAME RAIL 5

CABLE ASM-CHASSIS BATTERY DISCONNECT SUPPLY (RED) TO CHASSIS ELECTRICAL BOX 6

6 CABLE ASM-COACH BATTERY DISCONNECT SUPPLY (YEL) TO CHASSIS ELECTRICAL BOX

CABLE ASM-CHASSIS BATTERY FUSE (RED)

401 TO INVERTER CONNECTIONS IN COMPARTMENT SEE WIRING INSTL-BODY, 110V FOR ADDITIONAL INFORMATION

TERMINAL-BATTERY 47441-01-000

CHASSIS SUPPLIED GROUND CABLE 2

CABLE ASM-COACH BATTERY GND (BLK)

1 BATTERY (CHASSIS SUPPLIED)  
TIEDOWN ASM  
160014-03-CHT  
BOLT  
51387-06-000 (2)  
NUT  
D39-06-00U (2)  
WASHER-RUBBER  
184541-01-CHT (2)

4 CABLE ASM (BLK)  
133566-11-002

BATTERY  
63739-01-000 (2)  
TIEDOWN ASM  
160014-03-CHT (2)  
BOLT  
51387-06-000 (2)  
NUT  
D39-06-00U (3)  
WASHER-RUBBER  
184541-01-CHT (2)

- NOTES:
- 6 SEE CHASSIS ELECTRICAL BOX ASM FOR ADDITIONAL INFORMATION.
  - 5 SEE WIRING INSTL-CHASSIS FOR ADDITIONAL INFORMATION.
  - 4 USE TWO NUTS HERE TO ACCOUNT FOR BATTERY HEIGHT DIFFERENCE.
  - 3 SEE LEVELING SYSTEM INSTL FOR ADDITIONAL INFORMATION.
  - 2 LOCATE CHASSIS SUPPLIED GROUND CABLE, REDUCE LENGTH TO 700MM AND ADD TERMINAL 8348-01-000 TO THE CUT END.
  - 1 SUPPLIED WITH CHASSIS.

- 401 INVERTER-DC/AC, 1000 WATT
- 265 CODES/STANDARDS-CSA/CMVSS
- 1B1 CODES/STANDARDS USA

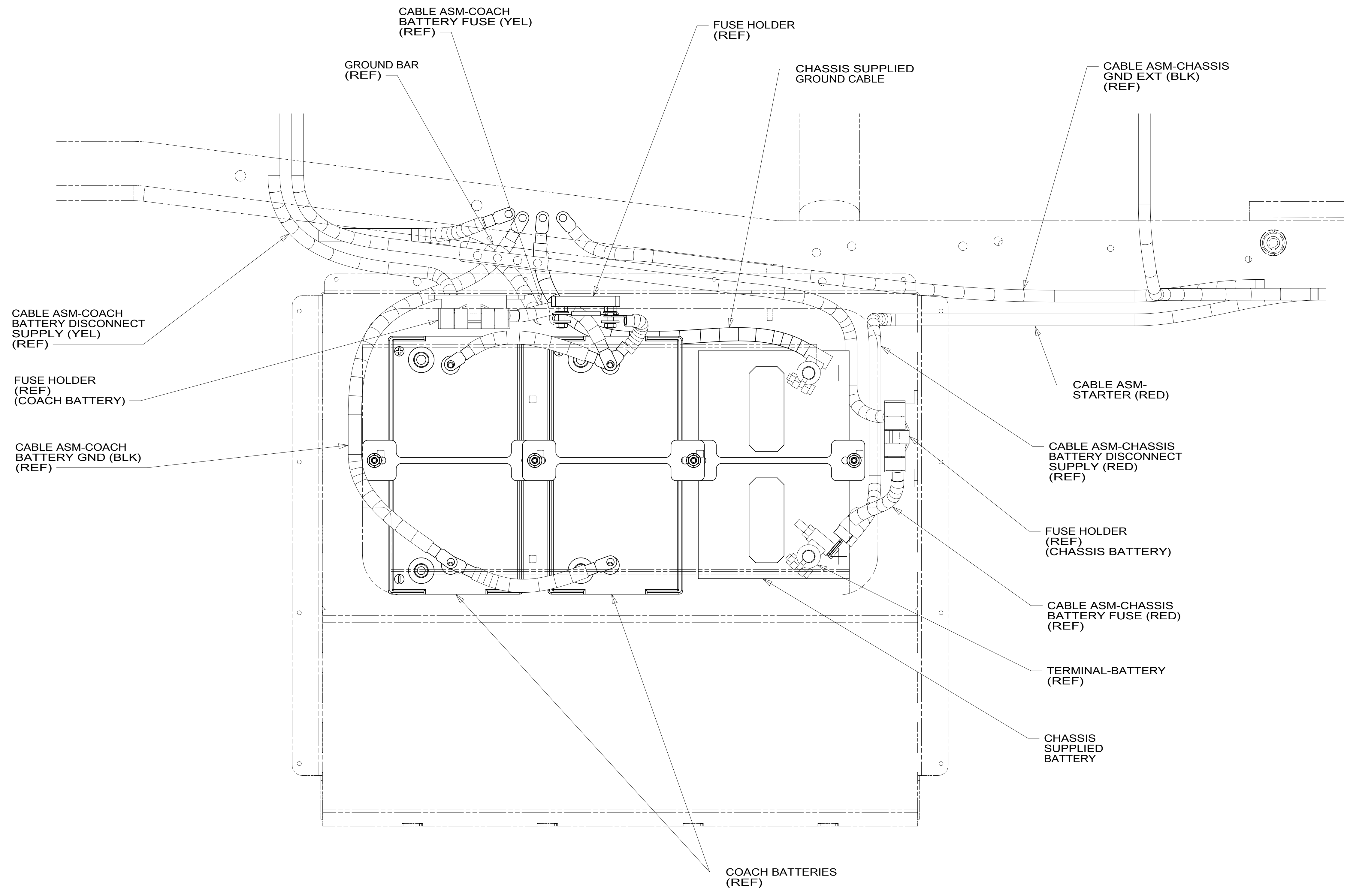
FOR ELECTRICAL TORQUE SPECIFICATIONS SEE DWG NO. 128783-01-000

FOR ELECTRICAL CALLOUTS SEE DWG NO. 121339-01-000

DESCRIPTION:		1B1 265	
<b>BATTERY INSTL</b>			
SHEET:	ITEM/PART NO.:	REV	
2 OF 4	000213814 / 30292001000		

8 7 6 5 4 3 2 1

D  
C  
B  
A



VIEW CA

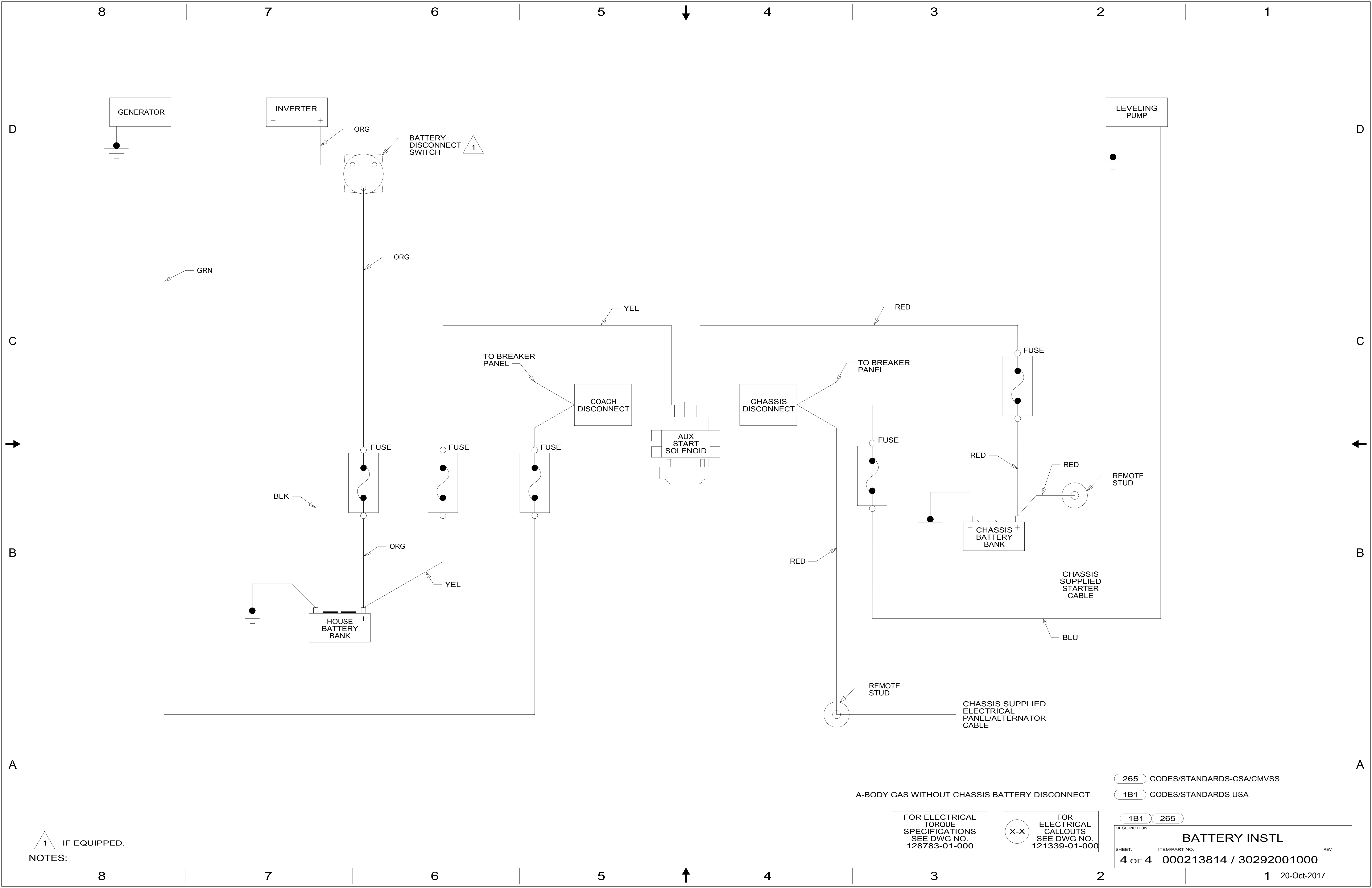
265 CODES/STANDARDS-CSA/CMVSS  
 1B1 CODES/STANDARDS USA

FOR ELECTRICAL TORQUE SPECIFICATIONS SEE DWG NO. 128783-01-000

FOR ELECTRICAL CALLOUTS SEE DWG NO. 121339-01-000

DESCRIPTION:		1B1 265	
<b>BATTERY INSTL</b>			
SHEET:	ITEM/PART NO.:	REV	
3 OF 4	000213814 / 30292001000		

8 7 6 5 4 3 2 1 20-Oct-2017



NOTES:  
 1 IF EQUIPPED.

A-BODY GAS WITHOUT CHASSIS BATTERY DISCONNECT

FOR ELECTRICAL TORQUE SPECIFICATIONS SEE DWG NO. 128783-01-000

FOR ELECTRICAL CALLOUTS SEE DWG NO. 121339-01-000

- 265 CODES/STANDARDS-CSA/CMVSS
- 1B1 CODES/STANDARDS USA

DESCRIPTION:		1B1 265	
<b>BATTERY INSTL</b>			
SHEET:	ITEM/PART NO.:	REV	
4 OF 4	000213814 / 30292001000		