

8

7

6

5

4

3

2

1

RED	1B1	136135-07-091	
	265	136136-07-091	
YEL	1B1	136131-05-074	2
	265	136134-05-074	2
BRN	1B1	136131-03-056	2
	265	136134-03-056	2
BLU	1B1	136131-02-160	
	265	136134-02-160	
MAIN	1B1	136137-01-020	
	265	136138-01-020	
BLK	1B1	136135-06-080	
	265	136136-06-080	
WHT	1B1	136135-09-030	6
	265	136136-09-030	6
THROW IN WIRE #1	1B1	136131-03-004	2
	265	136134-03-004	2
THROW IN WIRE #2	1B1	136131-02-043	2
	265	136134-02-043	2
THROW IN WIRE #3	1B1	136131-03-011	2 5 401
	265	136134-03-011	2 5 401
THROW IN WIRE #4	1B1	136131-19-011	2 5 401
	265	136134-19-011	2 5 401
THROW IN WIRE #5	1B1	136131-19-140	4
	265	136134-19-140	4
THROW IN WIRE #6	1B1	136131-19-023	
	265	136134-19-023	
THROW IN WIRE #7	1B1	136131-19-010	
	265	136134-19-010	

SLIDEOUT WIRE #1	136151-02-018	3
SLIDEOUT WIRE #2	136151-05-018	3
SLIDEOUT WIRE #3	136151-03-018	3
SLIDEOUT WIRE #4	136152-06-018	
GROUND ATS	136145-01-015	
GROUND MAIN	178545-01-024	

- 6 SEE DETAIL CF FOR EMS INSTALLATION.
- 5 SEE DETAIL CD FOR ADDITIONAL INFORMATION.
- 4 SEE DETAIL CC FOR CONNECTOR INSTALLATION.
- 3 SEE DETAIL CB FOR CONNECTOR INSTALLATION.
- 2 SEE DETAIL CA FOR CONNECTOR INSTALLATION.

1. ALL GROUNDS WIRES TO BE COVERED WITH TUBING 8041-02-000.

NOTES:

FOR ELECTRICAL TORQUE SPECIFICATIONS SEE DWG NO. 128783-01-000

FOR ELECTRICAL CALLOUTS SEE DWG NO. 121339-01-000

- 401 INVERTER-DC/AC, 1000 WATT
- 265 CODES/STANDARDS-CSA/CMVSS
- 1B1 CODES/STANDARDS USA

1B1 265

**WINNEBAGO**  
COPYRIGHT 2016 WINNEBAGO INDUSTRIES, INC.

DSNR:	ALL DIMENSIONS ARE IN MILLIMETERS	
DFFR:	MATERIAL:	
UNSPECIFIED TOLERANCES:		
WHOLE DIM (X)	: 3	
ONE-PLACE (X.X)	: 1.5	
TWO-PLACE (X.XX)	: 0.50	
ANGLE	: 1°	
REFER TO ES0018 FOR FASTENER TIGHTENING GUIDELINES	WEIGHT: (LBS)	FIRST USED: 17 E27N
DESCRIPTION: <b>LOAD CENTER/ATS ASM</b>		
SHEET: 1 OF 4	ITEM/PART NO: 000213813 / 30291901000	REV:

8

7

6

5

4

3

2

1

8 7 6 5 4 3 2 1

D

D

C

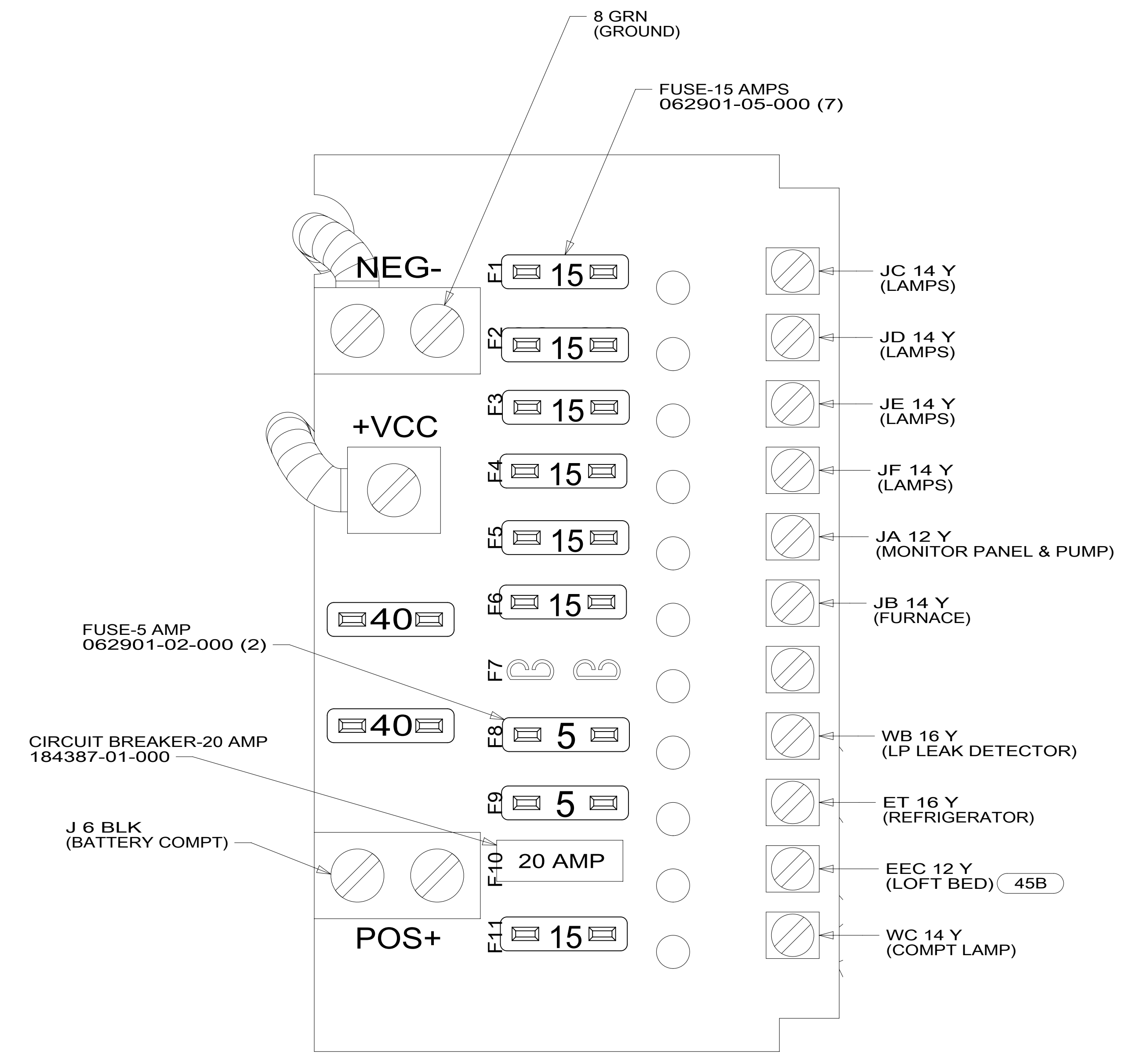
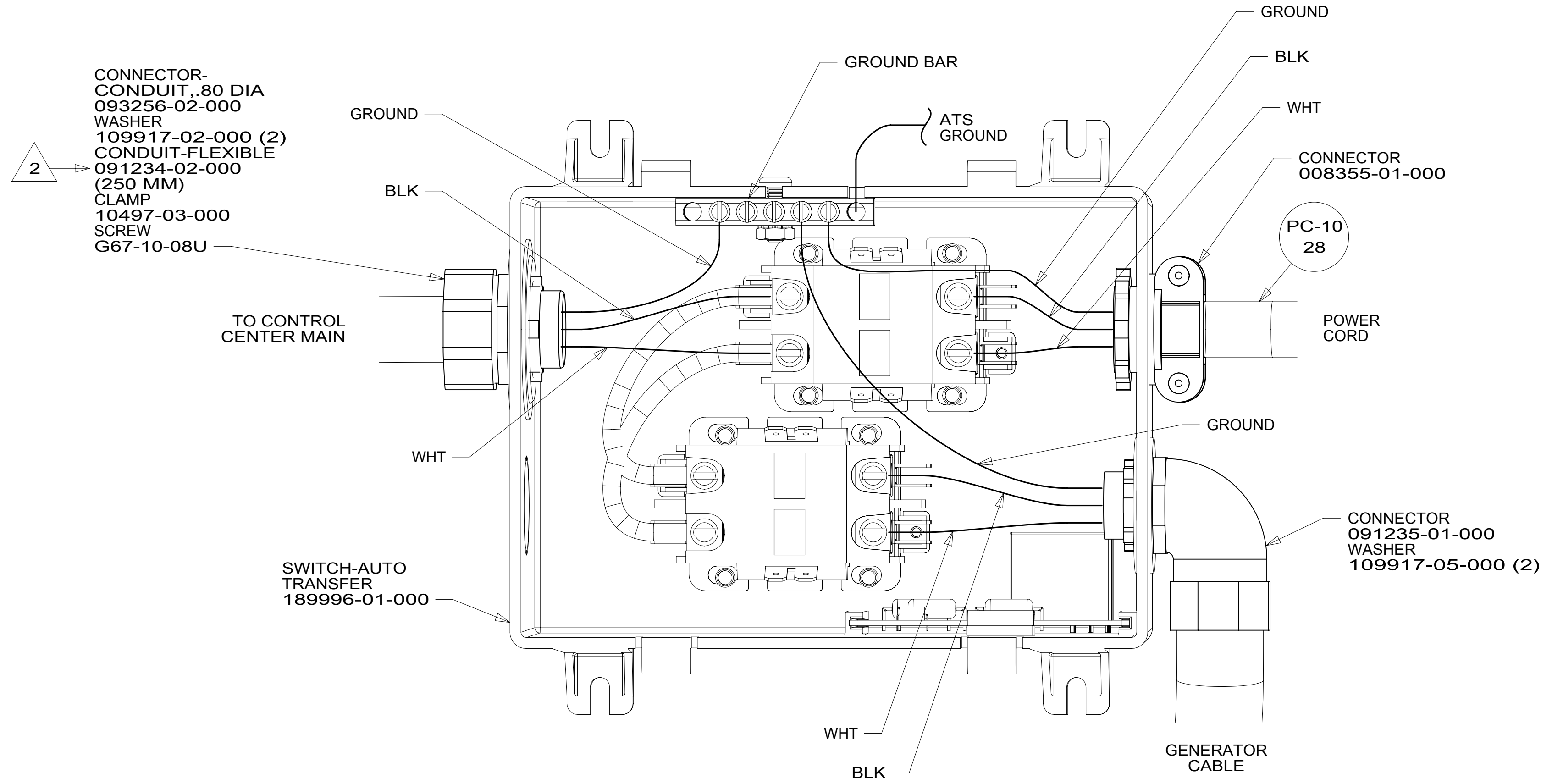
C

B

B

A

A



2 SECURE CONDUIT TO MAIN CABLE ASSEMBLY WITH TAPE 8363-01-000 FOR TRANSPORTATION PURPOSES.

NOTES:  
1. ALL GROUND WIRES TO BE COVERED WITH TUBING 8041-02-000.

FOR ELECTRICAL TORQUE SPECIFICATIONS SEE DWG NO. 128783-01-000

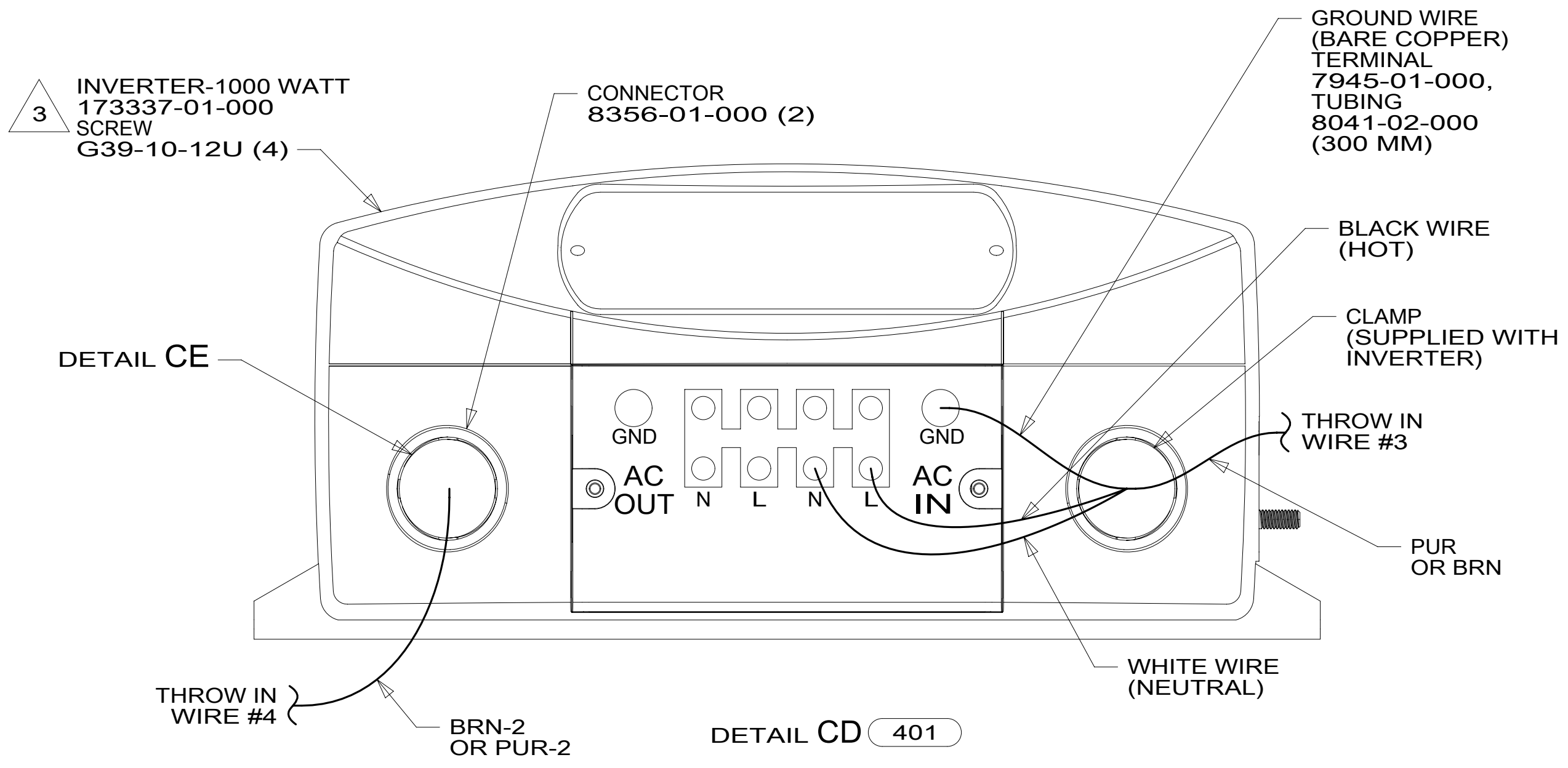
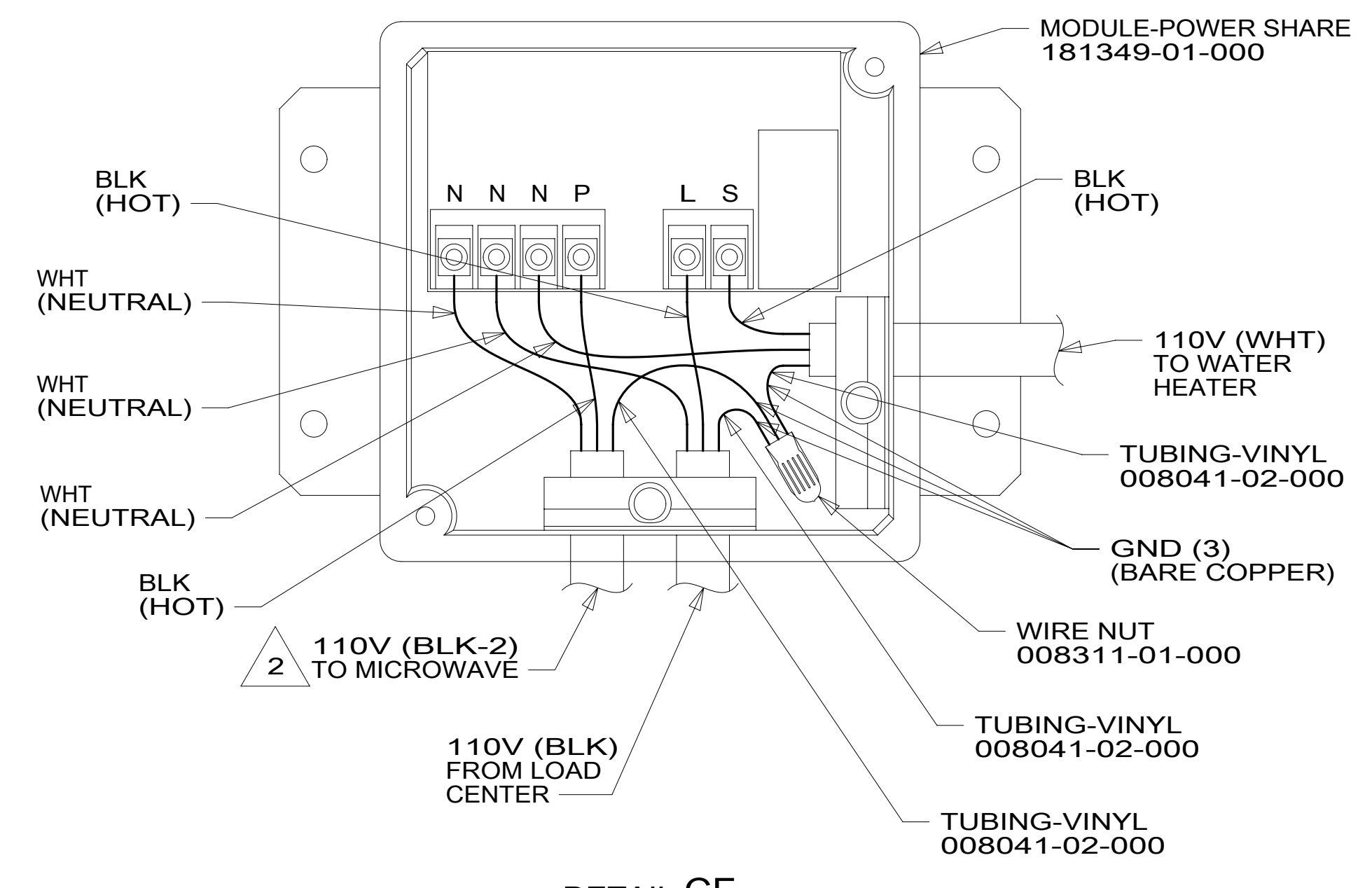
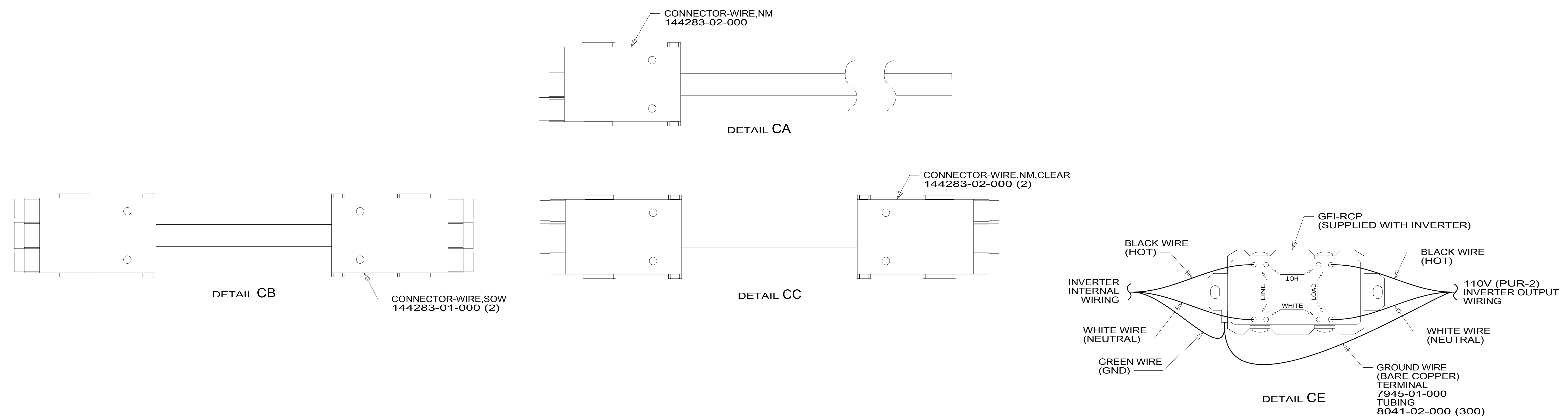
FOR ELECTRICAL CALLOUTS SEE DWG NO. 121339-01-000

- 45B LOFT BED
- 265 CODES/STANDARDS-CSA/CMVSS
- 1B1 CODES/STANDARDS USA

DESCRIPTION:		1B1 265	
<b>LOAD CENTER/ATS ASM</b>			
SHEET:	ITEM/PART NO.:	REV:	
2 OF 4	000213813 / 30291901000		

8 7 6 5 4 3 2 1 13-Dec-2016

8 7 6 5 4 3 2 1



- NOTES:**
- 3 INVERTER SUPPLIED WITH REMOTE PANEL SEND TO MANUFACTURING LINE.
  - 2 MEASURE 900 MM FROM THE BACK OF THE LOAD CENTER, LOOP THE BLACK WIRE AND CONNECT AS SHOWN.
  - 1 APPLY 300MM OF CONDUIT-CONVOLUTE 41953-05-000 OVER WIRE AT DIMENSION SHOWN AND SECURE BOTH ENDS OF TUBING TO WIRE WITH TAPE 8363-01-000.

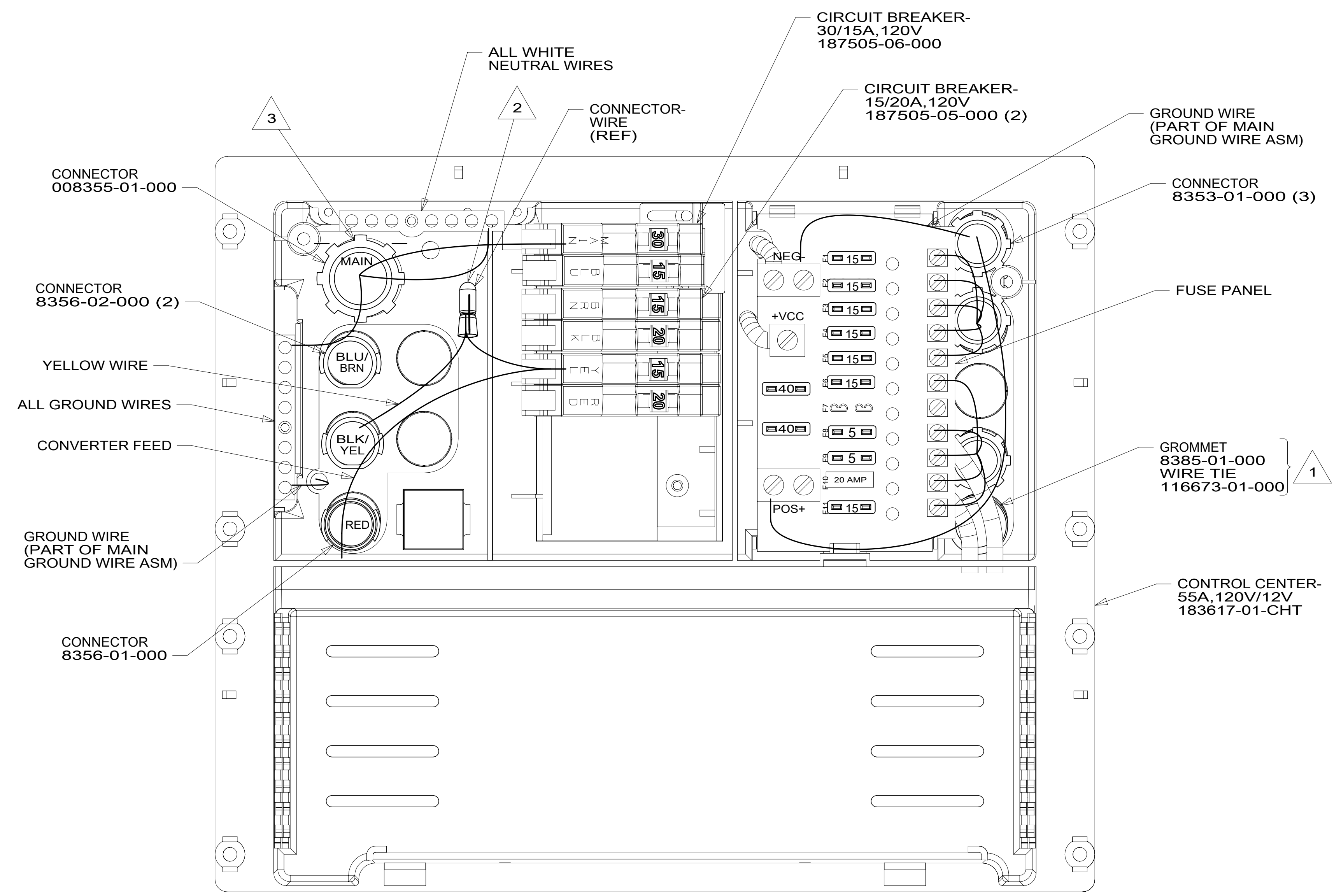
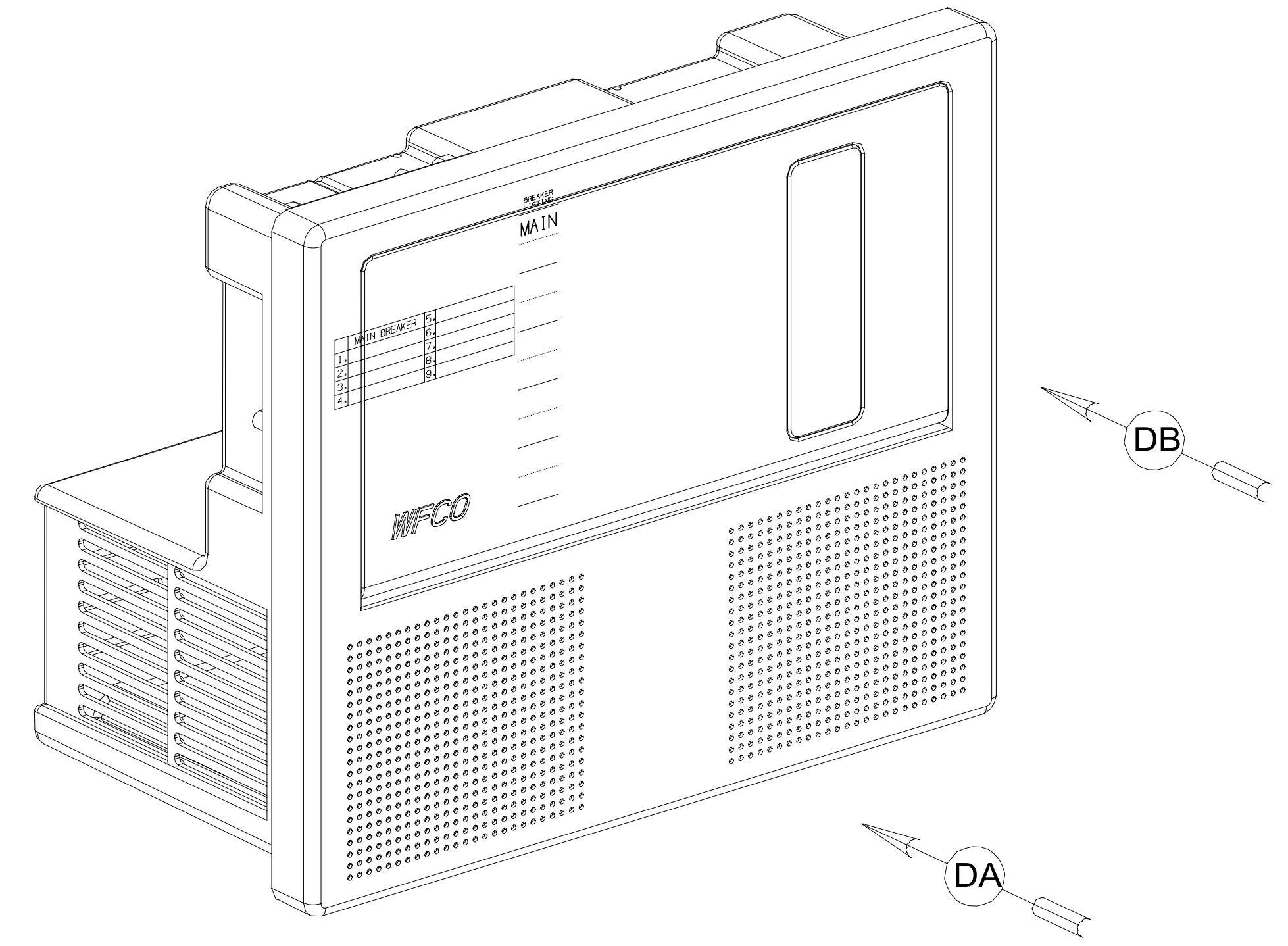
- 401 INVERTER-DC/AC, 1000 WATT
- 265 CODES/STANDARDS-CSA/CMVSS
- 1B1 CODES/STANDARDS USA

FOR ELECTRICAL TORQUE SPECIFICATIONS SEE DWG NO. 128783-01-000

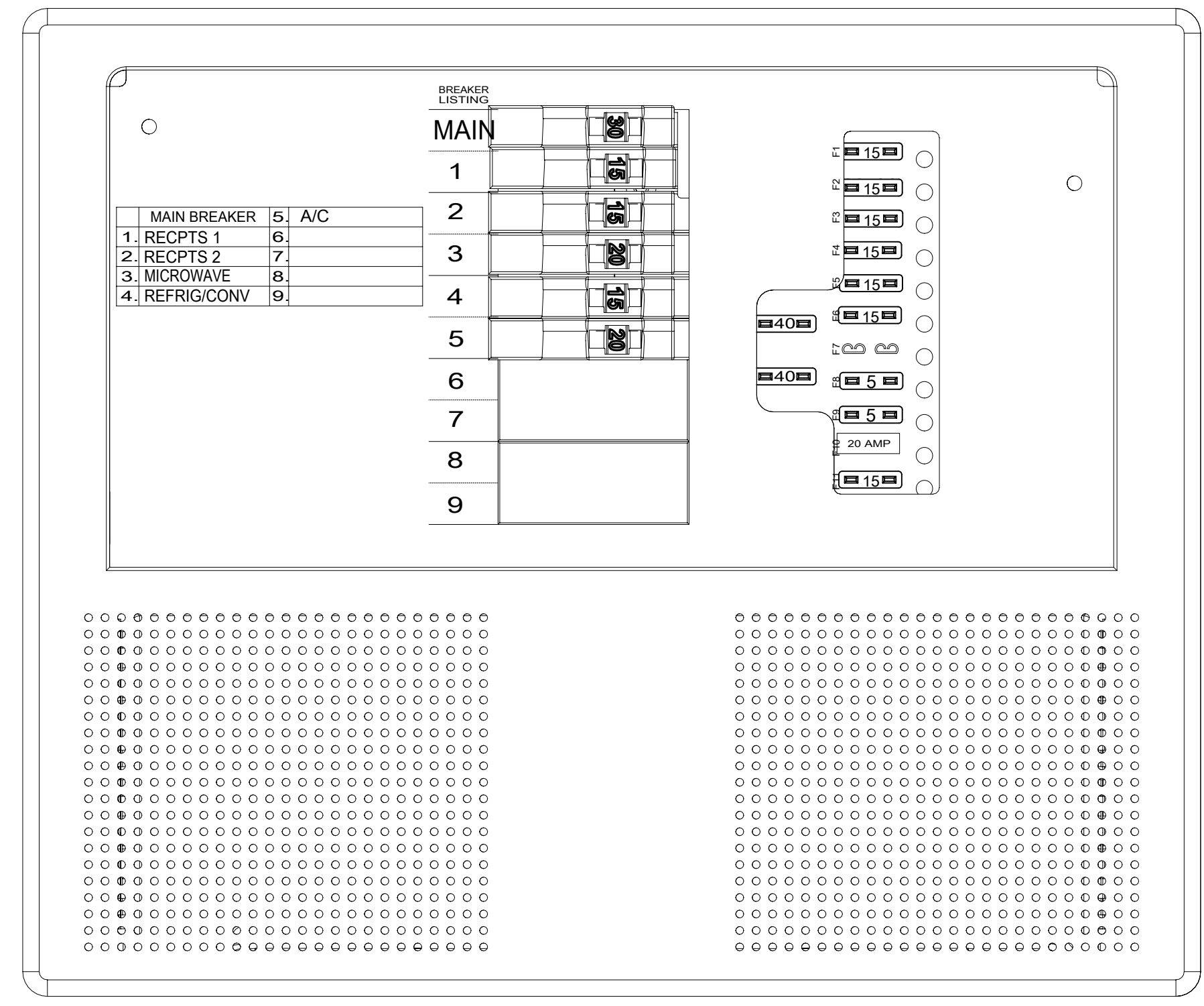
X-X FOR ELECTRICAL CALLOUTS SEE DWG NO. 121339-01-000

DESCRIPTION:	
LOAD CENTER/ATS ASM	
SHEET: 3 OF 4	ITEM/PART NO: 000213813 / 30291901000
REV	

8 7 6 5 4 3 2 1 13-Dec-2016



VIEW DA  
(COVER REMOVED)



VIEW DB  
(DOOR REMOVED)

- NOTES:
- 3 TO BE CONNECTED DURING ASSEMBLY OF LOAD CENTER.
  - 2 CONNECT CONVERTER POWER CIRCUIT INTO YELLOW BREAKER USE SUPPLIED WIRE NUT TO CONNECT TO YELLOW CIRCUIT WIRE.
  - 1 INSERT GROMMET FROM THE INSIDE OF CONTROL CENTER. SECURE 110V WIRES TO BACKSIDE OF CONTROL CENTER WITH WIRE TIE.

265 CODES/STANDARDS-CSA/CMVSS  
1B1 CODES/STANDARDS USA

FOR ELECTRICAL TORQUE SPECIFICATIONS SEE DWG NO. 128783-01-000

FOR ELECTRICAL CALLOUTS SEE DWG NO. 121339-01-000

DESCRIPTION:	1B1 265	
LOAD CENTER/ATS ASM		
SHEET:	ITEM/PART NO.:	REV:
4 OF 4	000213813 / 30291901000	