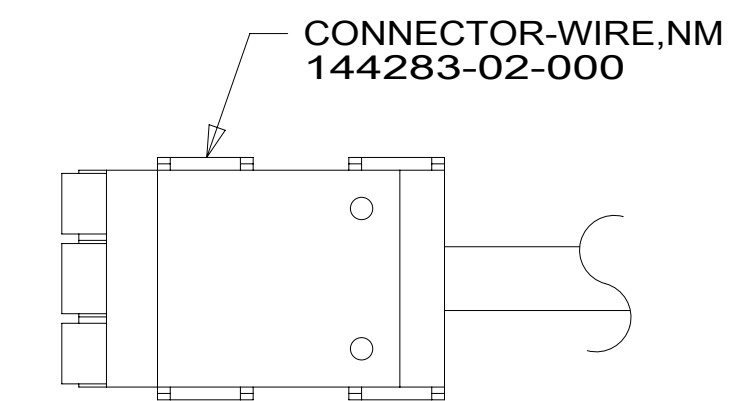


RED	1B1	136135-07-052	
	265	136136-07-052	
YEL	1B1	136131-05-041	
	265	136134-05-041	
BLK	1B1	136135-06-055	093
	265	136136-06-055	093
BLK	1B1	136135-06-012	09A
	265	136136-06-012	09A
BLK-2	1B1	136135-06-048	09A
	265	136136-06-048	09A
BRN	1B1	136131-03-069	
	265	136134-03-069	
BLU	1B1	136131-02-086	
	265	136134-02-086	
WHT	1B1	136135-09-056	09A
	265	136136-09-056	09A
THROW IN WIRE #1	1B1	136131-02-060	
	265	136134-02-060	
THROW IN WIRE #2	1B1	136131-03-054	
	265	136134-03-054	
THROW IN WIRE #3	1B1	136131-03-013	4
	265	136134-03-013	4
THROW IN WIRE #4	1B1	136131-03-006	4
	265	136134-03-006	4
THROW IN WIRE #5	1B1	136131-03-010	
	265	136134-03-010	
MAIN	1B1	164957-07-044	
	265	164957-08-044	
GROUND MAIN		136145-06-017	



DETAIL AA

- 093 PREMIUM PACKAGE WITHOUT
- 09A PREMIUM PACKAGE
- 265 CODES/STANDARDS-CSA/CMVSS
- 1B1 CODES/STANDARDS USA

1B1 265



DSNR:		ALL DIMENSIONS ARE IN MILLIMETERS	
DFFR:			
UNSPECIFIED TOLERANCES:		MATERIAL:	
WHOLE DIM (X)	3		
ONE-PLACE (X.X)	1.5		
TWO-PLACE (X.XX)	0.50		
ANGLE	1°		
REFER TO ES0018 FOR FASTENER TIGHTENING GUIDELINES		WEIGHT: (LBS)	FIRST USED:
			17 326A
DESCRIPTION: <b>LOAD CENTER/ATS ASM</b>			
SHEET:	ITEM/PART NO.:	REV:	
1 OF 4	000213651 / 30262301000		
REF:		1 14-Dec-2016	

FOR ELECTRICAL TORQUE SPECIFICATIONS SEE DWG NO. 128783-01-000

FOR ELECTRICAL CALLOUTS SEE DWG NO. 121339-01-000

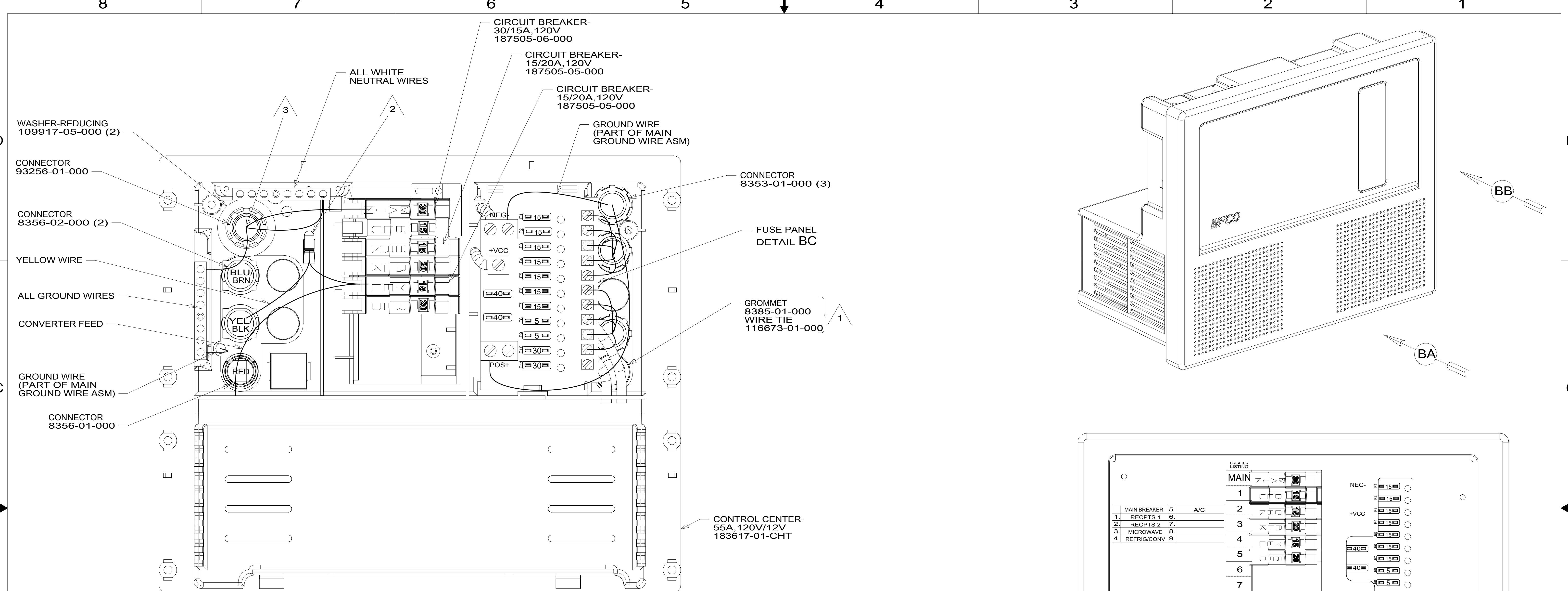
4 SEE DETAIL AA FOR CONNECTOR INSTALLATION.

3. SEE WIRING INSTL-BODY, 12V FOR ADDITIONAL INFORMATION.

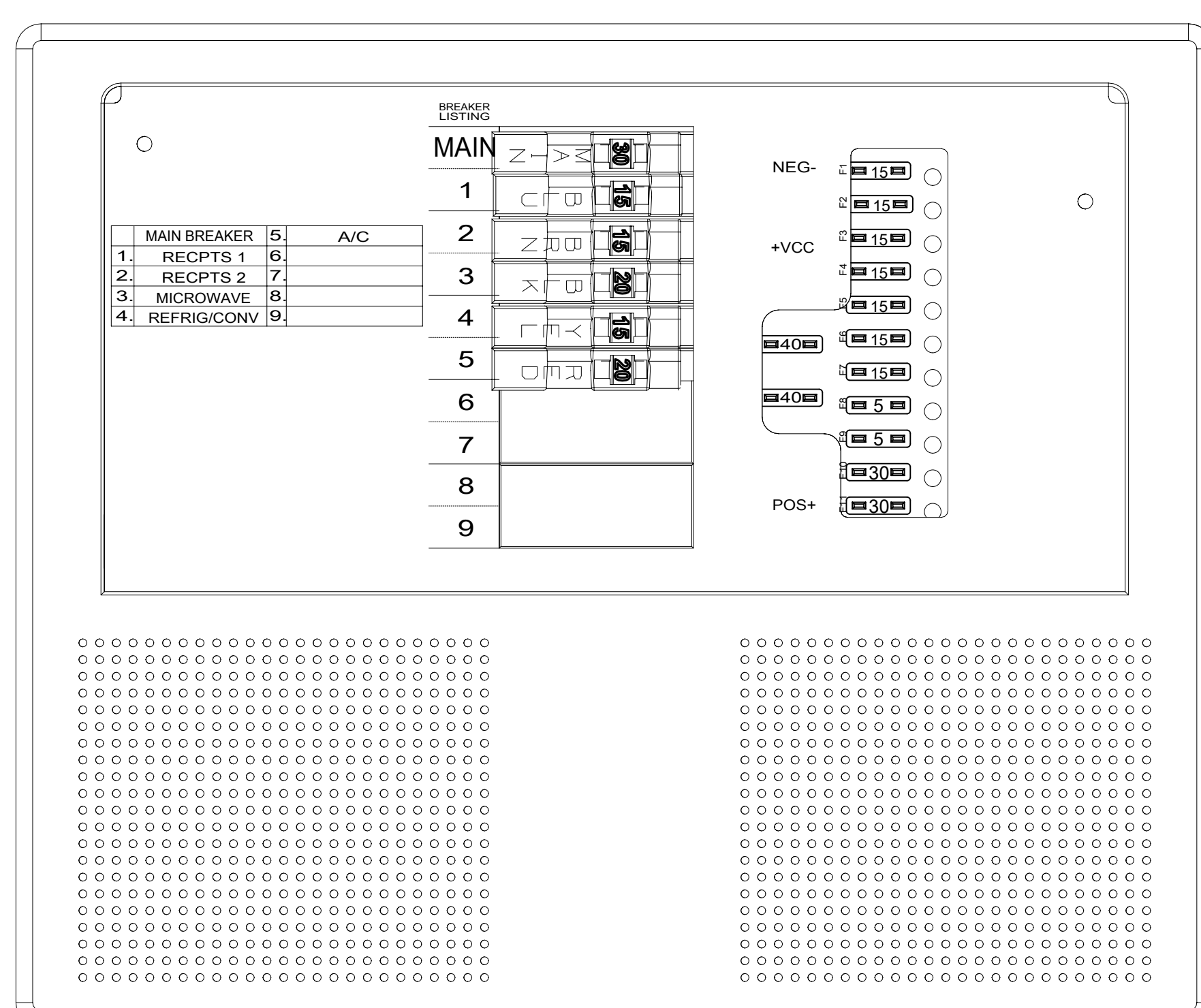
2. SECURE WIRES TO BACKSIDE OF LOAD CENTER WITH WIRE TIE 116673-01-000.

1. ALL GROUND WIRES TO BE COVERED WITH TUBING 8041-02-000.

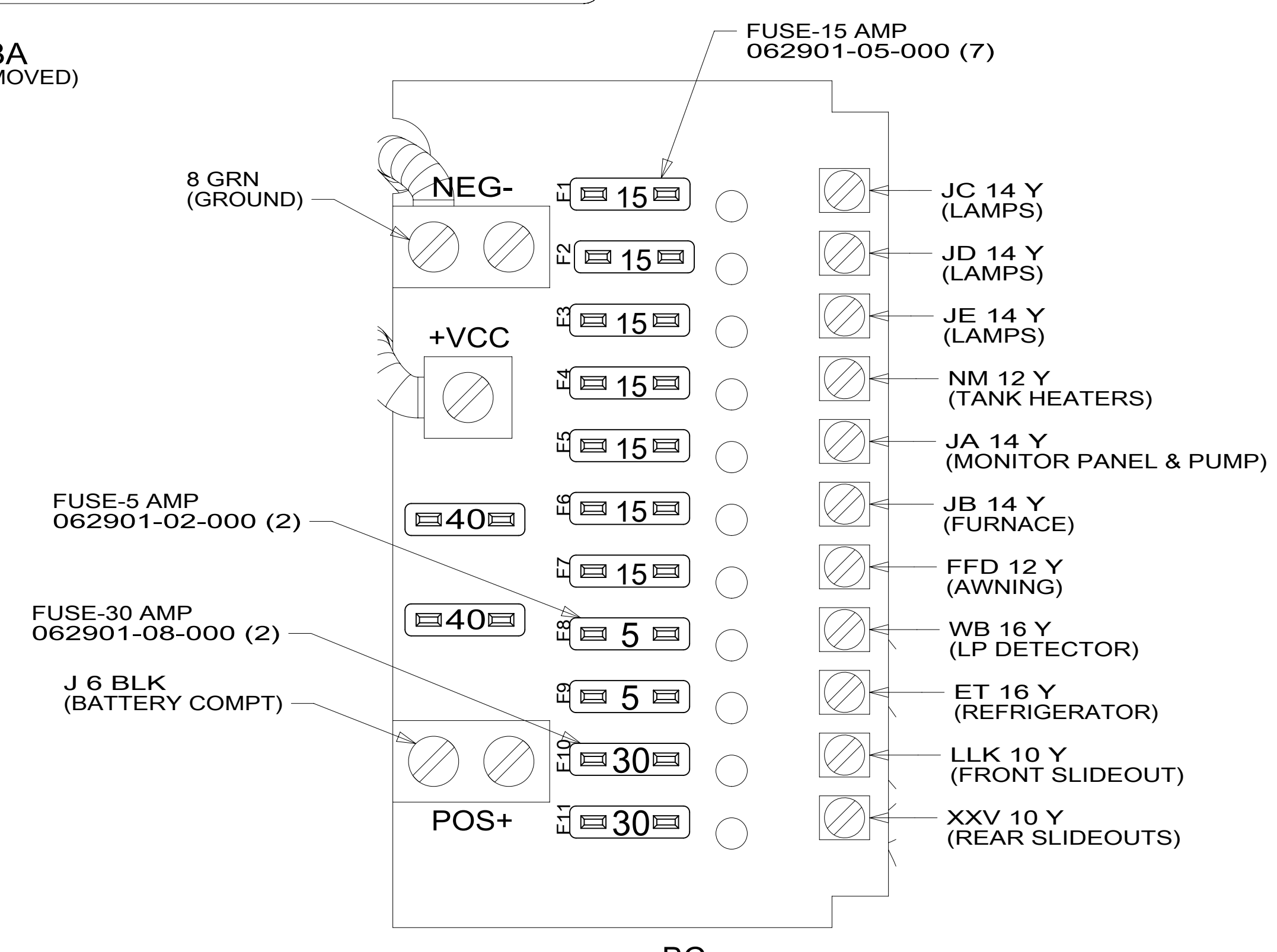
NOTES:



VIEW BA  
(COVER REMOVED)



VIEW BB  
(DOOR REMOVED)



DETAIL BC

- NOTES:
- 3 110V MAIN TO BE INSTALLED ON LINE.
  - 2 CONNECT CONVERTER POWER CIRCUIT INTO YELLOW BREAKER USE SUPPLIED WIRE NUT TO CONNECT TO YELLOW CIRCUIT WIRE.
  - 1 INSERT GROMMET FROM THE INSIDE OF CONTROL CENTER. SECURE 110V WIRES TO BACKSIDE OF CONTROL CENTER WITH WIRE TIE.

FOR ELECTRICAL TORQUE SPECIFICATIONS SEE DWG NO. 128783-01-000

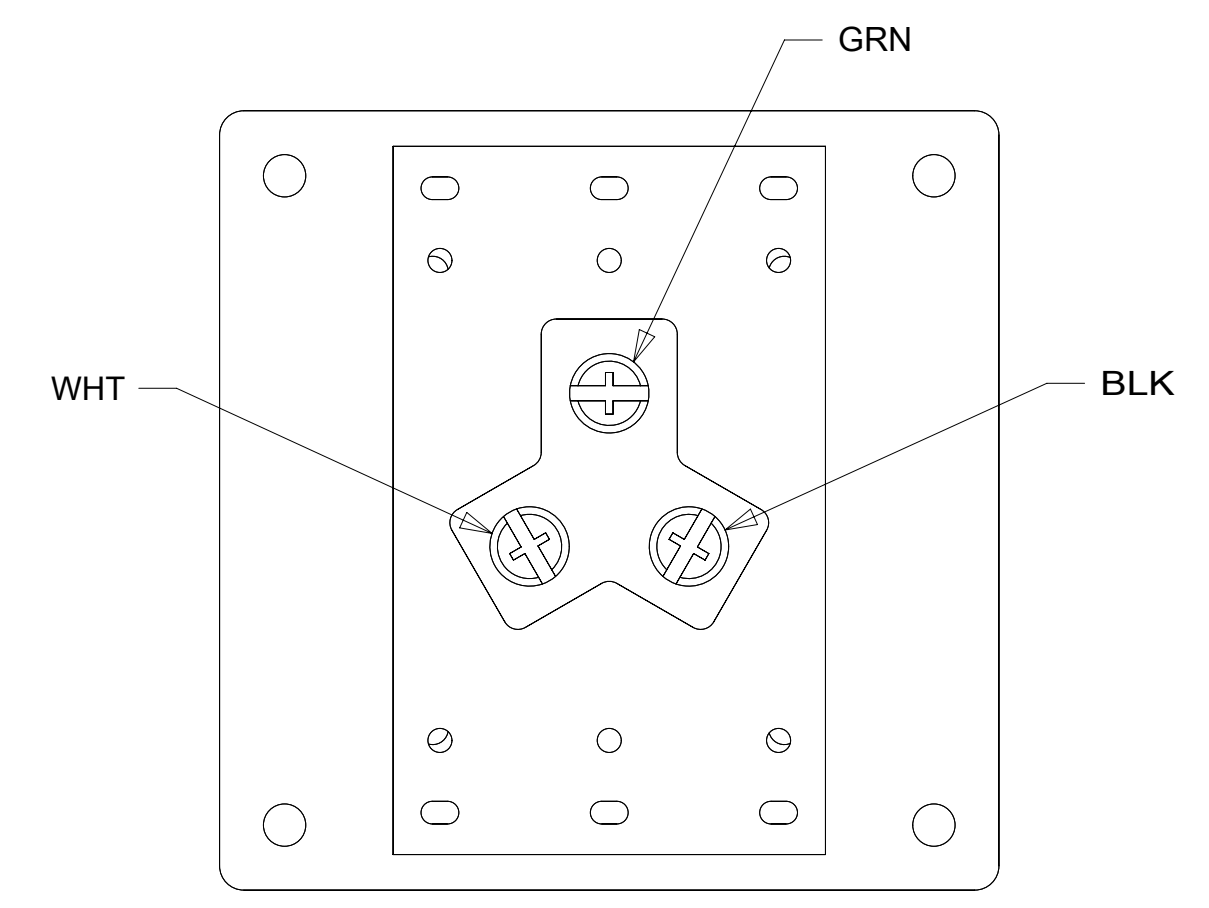
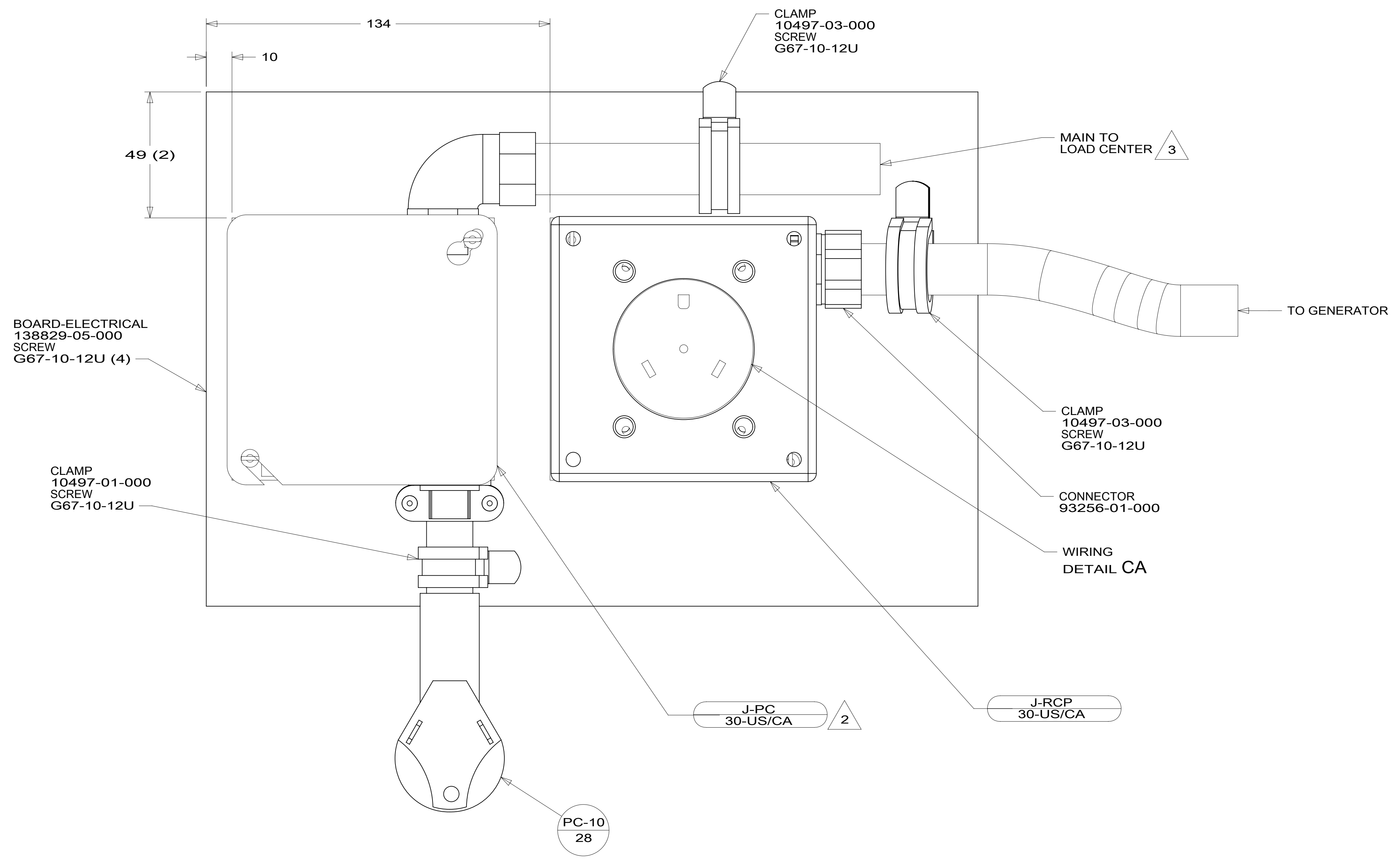
FOR ELECTRICAL CALLOUTS SEE DWG NO. 121339-01-000

- 265 CODES/STANDARDS-CSA/CMVSS
- 1B1 CODES/STANDARDS USA

DESCRIPTION:		1B1 265	
LOAD CENTER/ATS ASM			
SHEET:	ITEM/PART NO.:	REV	
2 OF 4	000213651 / 30262301000		

8 7 6 5 4 3 2 1

D  
C  
B  
A



3 SEE WIRING INSTL-BODY, 110V FOR ADDITIONAL INFORMATION.

2 CONNECT BLK TO BLK, WHT TO WHT, AND GRNDS TO GRNDS.

1. ALL GROUND WIRES TO BE COVERED WITH TUBING 8041-02-000.

NOTES:

- 093 PREMIUM PACKAGE WITHOUT
- 265 CODES/STANDARDS-CSA/CMVSS
- 1B1 CODES/STANDARDS USA

FOR ELECTRICAL  
TORQUE  
SPECIFICATIONS  
SEE DWG NO.  
128783-01-000

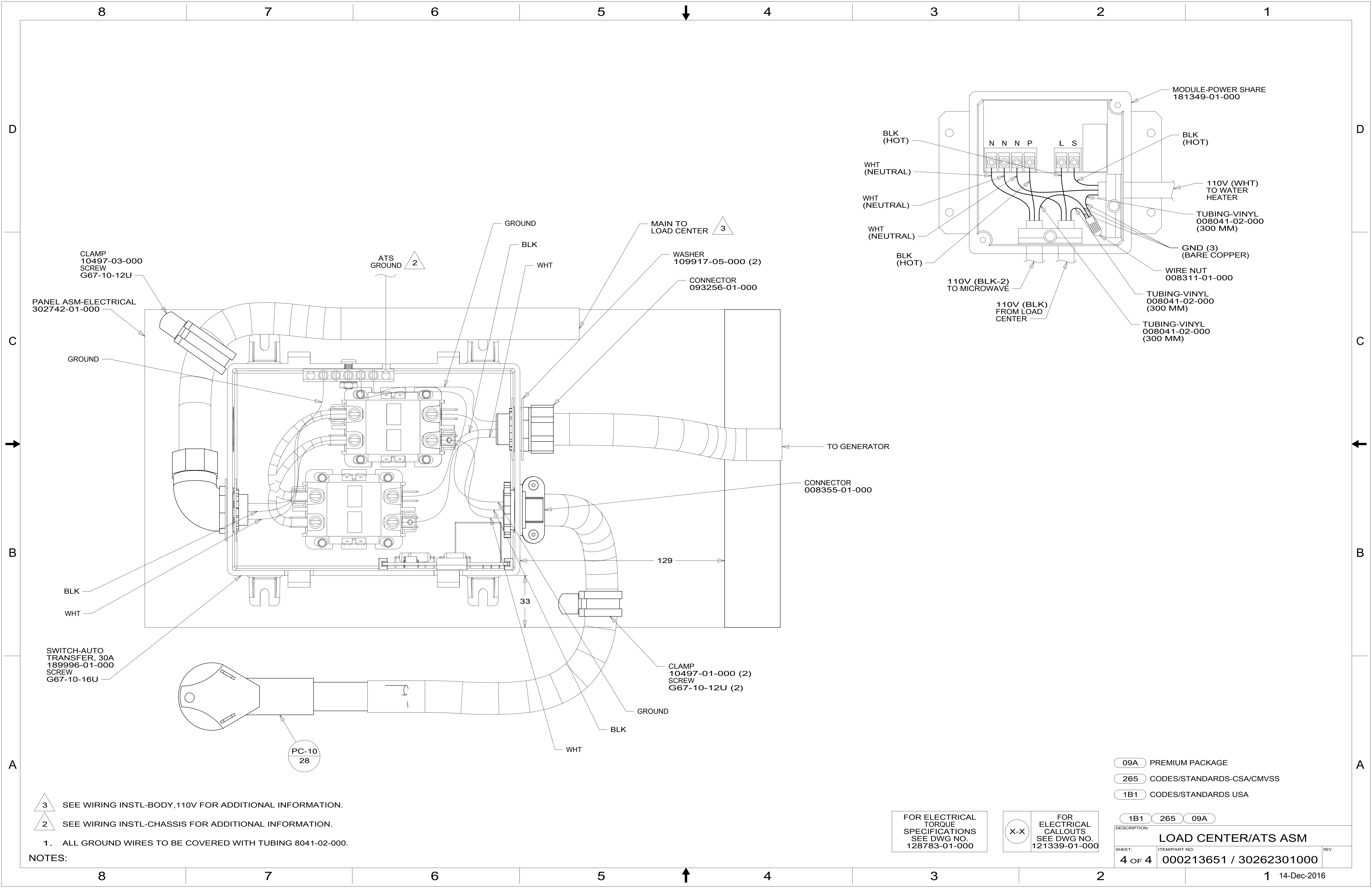
FOR ELECTRICAL  
CALLOUTS  
SEE DWG NO.  
121339-01-000

1B1 265 093

DESCRIPTION:  
**LOAD CENTER/ATS ASM**

SHEET: 3 OF 4 ITEM/PART NO: 000213651 / 30262301000 REV

8 7 6 5 4 3 2 1 14-Dec-2016



CLAMP  
10497-03-000  
SCREW  
G67-10-12U

PANEL ASM-ELECTRICAL  
302742-01-000

GROUND

BLK

WHT

SWITCH-AUTO  
TRANSFER, 30A  
189996-01-000  
SCREW  
G67-10-16U

PC-10  
28

ATS  
GROUND 2

GROUND

BLK

WHT

MAIN TO  
LOAD CENTER 3

WASHER  
109917-05-000 (2)

CONNECTOR  
093256-01-000

129

33

CLAMP  
10497-01-000 (2)  
SCREW  
G67-10-12U (2)

GROUND

BLK

WHT

TO GENERATOR

CONNECTOR  
008355-01-000

BLK  
(HOT)

WHT  
(NEUTRAL)

WHT  
(NEUTRAL)

WHT  
(NEUTRAL)

BLK  
(HOT)

110V (BLK-2)  
TO MICROWAVE

110V (BLK)  
FROM LOAD  
CENTER

MODULE-POWER SHARE  
181349-01-000

BLK  
(HOT)

110V (WHT)  
TO WATER  
HEATER

TUBING-VINYL  
008041-02-000  
(300 MM)

GND (3)  
(BARE COPPER)

WIRE NUT  
008311-01-000

TUBING-VINYL  
008041-02-000  
(300 MM)

TUBING-VINYL  
008041-02-000  
(300 MM)

3 SEE WIRING INSTL-BODY, 110V FOR ADDITIONAL INFORMATION.

2 SEE WIRING INSTL-CHASSIS FOR ADDITIONAL INFORMATION.

1. ALL GROUND WIRES TO BE COVERED WITH TUBING 8041-02-000.

NOTES:

FOR ELECTRICAL  
TORQUE  
SPECIFICATIONS  
SEE DWG NO.  
128783-01-000

FOR  
ELECTRICAL  
CALLOUTS  
SEE DWG NO.  
121339-01-000

- 09A PREMIUM PACKAGE
- 265 CODES/STANDARDS-CSA/CMVSS
- 1B1 CODES/STANDARDS USA

1B1 265 09A

DESCRIPTION:  
**LOAD CENTER/ATS ASM**

SHEET: 4 OF 4 ITEM/PART NO: 000213651 / 30262301000 REV