

8

7

6

5



4

3

2

1

D

D

C

C

B

B

A

A

CABLE ASM-STARTER (RED)	141415-32-043
CABLE ASM-COACH BATTERY (YEL)	141415-52-016
CABLE ASM-COACH BATTERY GND (BLK)	133566-12-008
CABLE ASM-GENERATOR (GRN)	141415-42-031
CABLE ASM-GENERATOR GND (BLK)	133566-12-009
CABLE ASM-STARTER,EXT (RED 2)	141415-32-007

265 CODES/STANDARDS-CSA/CMVSS

1B1 CODES/STANDARDS USA

1B1 265



COPYRIGHT 2016 WINNEBAGO INDUSTRIES, INC.

DSNR:		ALL DIMENSIONS ARE IN MILLIMETERS	
DIFFR:		MATERIAL:	
UNSPECIFIED TOLERANCES:			
WHOLE DIM (X)	: 3		
ONE-PLACE (X.X)	: 1.5		
TWO-PLACE (X.XX)	: 0.50		
ANGLE	: 1°		

REFER TO ES0018 FOR FASTENER TIGHTENING GUIDELINES	WEIGHT: (LBS)	FIRST USED:
		17 326A

DESCRIPTION:		
BATTERY INSTL		

SHEET:	ITEM/PART NO.:	REV:
1 OF 3	000213563 / 30244901000	

REF: 1 09-Dec-2016

FOR ELECTRICAL TORQUE SPECIFICATIONS SEE DWG NO. 128783-01-000

FOR ELECTRICAL CALLOUTS SEE DWG NO. 121339-01-000

8

7

6

5



4

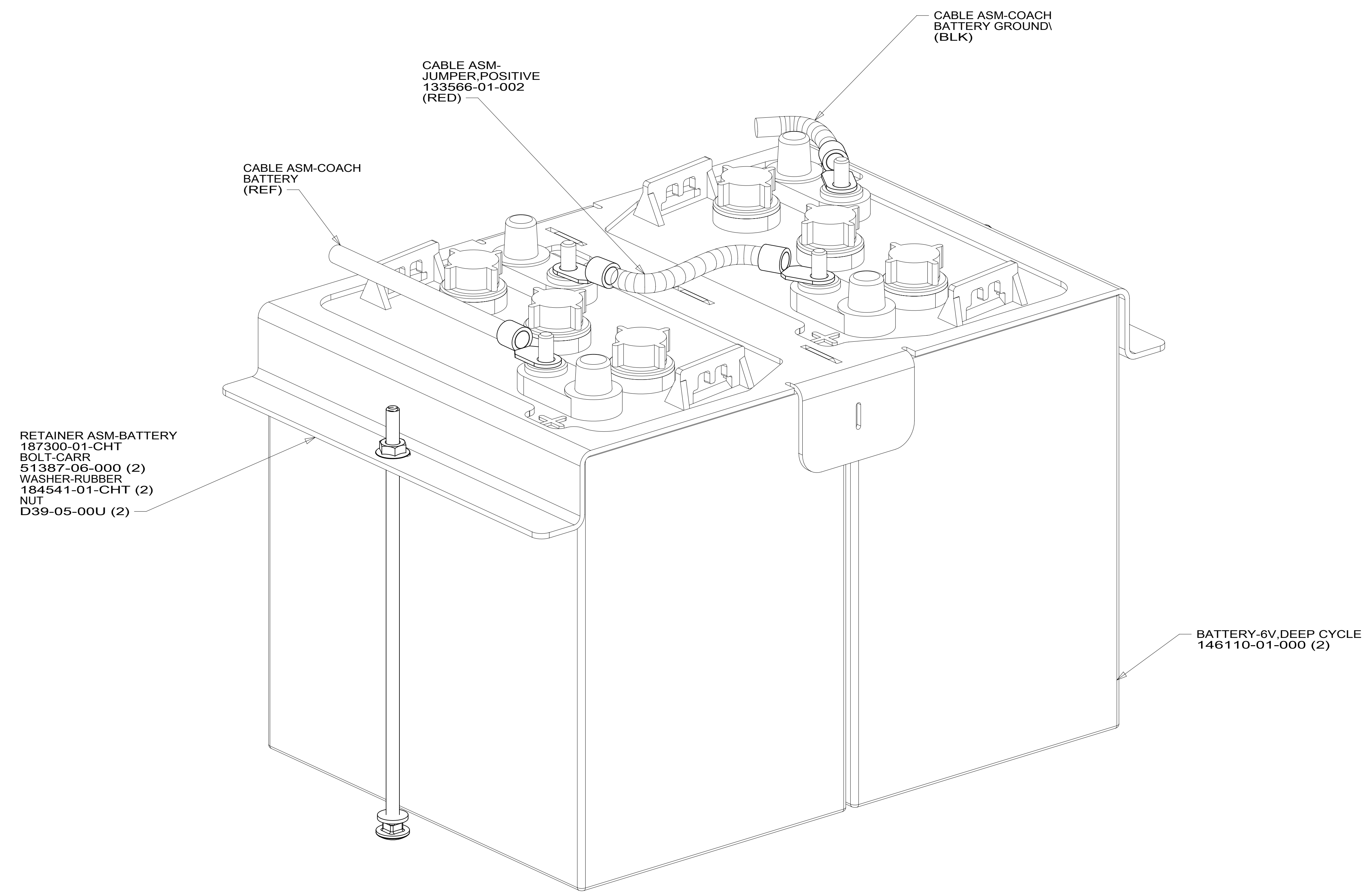
3

2

1 09-Dec-2016

8 7 6 5 4 3 2 1

D
C
B
A



VIEW BA

FOR ELECTRICAL TORQUE SPECIFICATIONS SEE DWG NO. 128783-01-000

FOR ELECTRICAL CALLOUTS SEE DWG NO. 121339-01-000

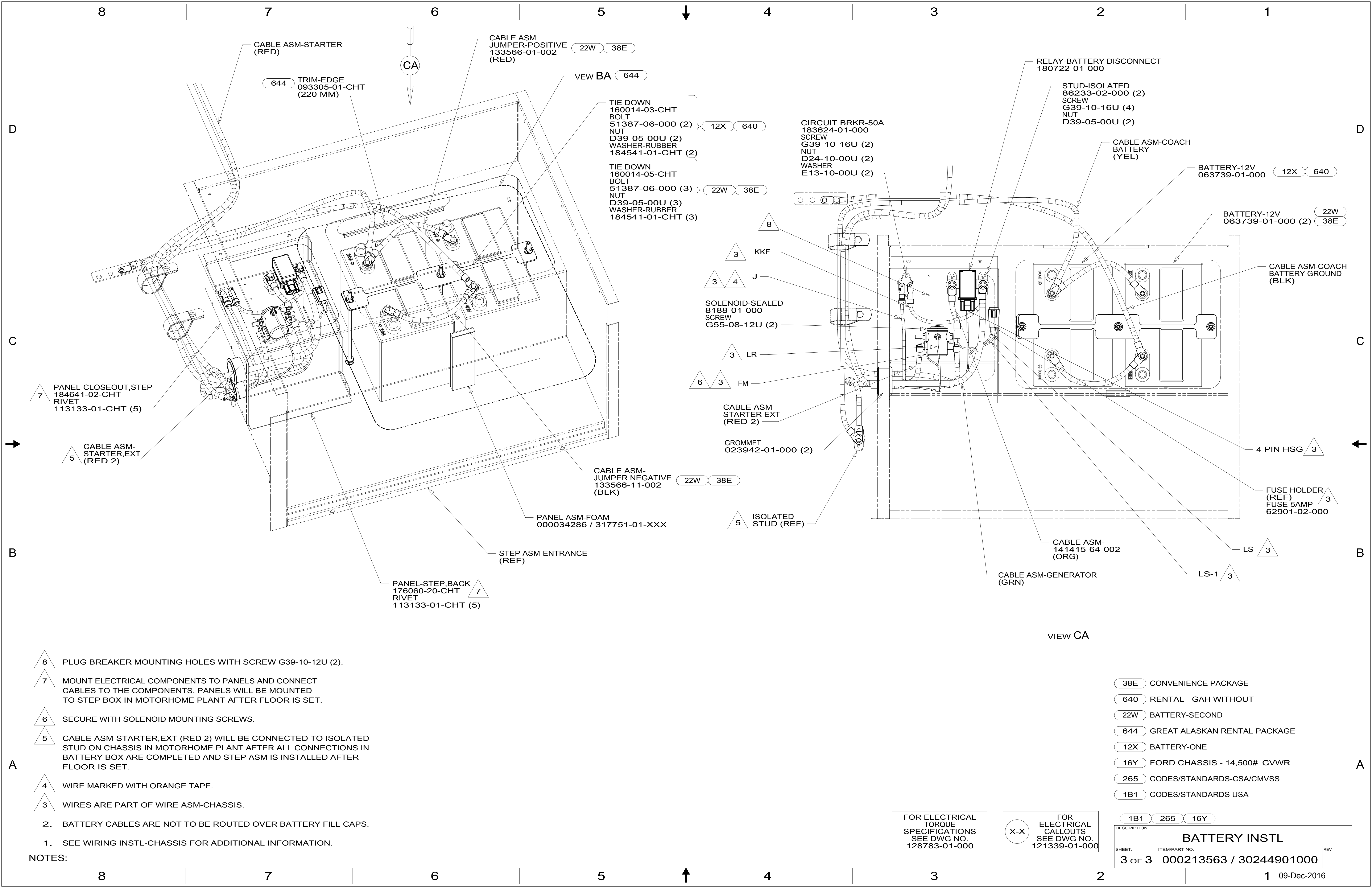
- 16Y FORD CHASSIS - 14,500#_GVWR
- 165 FORD 11,500# GVWR 5.4L ENGINE
- 644 GREAT ALASKAN RENTAL PACKAGE
- 265 CODES/STANDARDS-CSA/CMVSS
- 1B1 CODES/STANDARDS USA

1B1 265 644 165 16Y

DESCRIPTION: BATTERY INSTL

SHEET: 2 OF 3 ITEM/PART NO: 000213563 / 30244901000 REV

8 7 6 5 4 3 2 1 09-Dec-2016



644 TRIM-EDGE
093305-01-CHT
(220 MM)

CABLE ASM
JUMPER-POSITIVE
133566-01-002
(RED)

VIEW BA 644

TIE DOWN
160014-03-CHT
BOLT
51387-06-000 (2) 12X 640
NUT
D39-05-00U (2)
WASHER-RUBBER
184541-01-CHT (2)

TIE DOWN
160014-05-CHT
BOLT
51387-06-000 (3) 22W 38E
NUT
D39-05-00U (3)
WASHER-RUBBER
184541-01-CHT (3)

CIRCUIT BRKR-50A
183624-01-000
SCREW
G39-10-16U (2)
NUT
D24-10-00U (2)
WASHER
E13-10-00U (2)

RELAY-BATTERY DISCONNECT
180722-01-000

STUD-ISOLATED
86233-02-000 (2)
SCREW
G39-10-16U (4)
NUT
D39-05-00U (2)

CABLE ASM-COACH
BATTERY
(YEL)

BATTERY-12V
063739-01-000 12X 640

BATTERY-12V
063739-01-000 (2) 22W 38E

CABLE ASM-COACH
BATTERY GROUND
(BLK)

8
3 KKF
3 4 J
SOLENOID-SEALED
8188-01-000
SCREW
G55-08-12U (2)

3 LR

6 3 FM

CABLE ASM-
STARTER EXT
(RED 2)

GROMMET
023942-01-000 (2)

5 ISOLATED
STUD (REF)

CABLE ASM-
JUMPER NEGATIVE
133566-11-002
(BLK) 22W 38E

PANEL ASM-FOAM
000034286 / 317751-01-XXX

STEP ASM-ENTRANCE
(REF)

PANEL-STEP,BACK
176060-20-CHT
RIVET
113133-01-CHT (5) 7

7 PANEL-CLOSEOUT,STEP
184641-02-CHT
RIVET
113133-01-CHT (5)

5 CABLE ASM-
STARTER,EXT
(RED 2)

4 PIN HSG 3

FUSE HOLDER
(REF)
FUSE-5AMP
62901-02-000 3

LS 3

LS-1 3

CABLE ASM-
141415-64-002
(ORG)

CABLE ASM-GENERATOR
(GRN)

VIEW CA

- 8 PLUG BREAKER MOUNTING HOLES WITH SCREW G39-10-12U (2).
- 7 MOUNT ELECTRICAL COMPONENTS TO PANELS AND CONNECT CABLES TO THE COMPONENTS. PANELS WILL BE MOUNTED TO STEP BOX IN MOTORHOME PLANT AFTER FLOOR IS SET.
- 6 SECURE WITH SOLENOID MOUNTING SCREWS.
- 5 CABLE ASM-STARTER,EXT (RED 2) WILL BE CONNECTED TO ISOLATED STUD ON CHASSIS IN MOTORHOME PLANT AFTER ALL CONNECTIONS IN BATTERY BOX ARE COMPLETED AND STEP ASM IS INSTALLED AFTER FLOOR IS SET.
- 4 WIRE MARKED WITH ORANGE TAPE.
- 3 WIRES ARE PART OF WIRE ASM-CHASSIS.

- 2. BATTERY CABLES ARE NOT TO BE ROUTED OVER BATTERY FILL CAPS.
- 1. SEE WIRING INSTL-CHASSIS FOR ADDITIONAL INFORMATION.

NOTES:

- 38E CONVENIENCE PACKAGE
- 640 RENTAL - GAH WITHOUT
- 22W BATTERY-SECOND
- 644 GREAT ALASKAN RENTAL PACKAGE
- 12X BATTERY-ONE
- 16Y FORD CHASSIS - 14,500#_GVWR
- 265 CODES/STANDARDS-CSA/CMVSS
- 1B1 CODES/STANDARDS USA

FOR ELECTRICAL
TORQUE
SPECIFICATIONS
SEE DWG NO.
128783-01-000

FOR
ELECTRICAL
CALLOUTS
SEE DWG NO.
121339-01-000

DESCRIPTION:	1B1 265 16Y	
BATTERY INSTL		
SHEET:	ITEM/PART NO:	REV
3 OF 3	000213563 / 30244901000	