

FRONT
OF
COACH

- NOTES:
1. PLASTIC FITTINGS TO BE SEALED WITH SEALANT 084456-01-000.
 2. TUBING TO BE INSTALLED WITH SUFFICIENT SLOPE TO PROVIDE DRAINAGE TO NEAREST VALVE.
 3. ALL TUBING TO BE SECURED AT 1200 INTERVALS MAXIMUM WITH CLAMP 010495-01-000 AND SCREW 000G67-10-12U OR EQUIVALENT.
 4. ADD TEFLON TAPE 010405-02-000.
 5. ADD PIPE WRAP (LADDER SCRAP 110157-02-000) INSULATION.
 6. LABEL HOT AND COLD SUPPLY TUBES AND TAPE FITTING TO TUBE BEFORE CABINET SET TO PREVENT MOVEMENT.
 7. ALL CRIMP FITTINGS TO 5/8" PEX TUBING REQUIRE 5/8" CLAMP 140171-04-000.
 8. ALL CRIMP FITTINGS TO 1/2" PEX TUBING REQUIRE 1/2" CLAMP 140171-03-000.
 9. PARTS TO BE ASSEMBLED AND ABLE TO BE REMOVED AND STORED AS A SINGLE ASM.

X-X

FOR
WATER
CALLOUTS
SEE DWG NO.
000209446 /
303369-01-000

- 4KJ FLEXBED KIT - WITHOUT
- 45K FLEX BED KIT

WINNEBAGO [®]		COPYRIGHT 2017 WINNEBAGO INDUSTRIES, INC.	
DSNR:		ALL DIMENSIONS ARE IN MILLIMETERS	
DIFTR:			
UNSPECIFIED TOLERANCES:	MATERIAL:		
WHOLE DIM (X) :	3		
ONE-PLACE (X.X) :	1.5		
TWO-PLACE (X.XX) :	0.50		
ANGLE :	1°		
REFER TO ES0018 FOR FASTENER TIGHTENING GUIDELINES		WEIGHT: (LBS)	FIRST USED: (REF)
			17 848P
DESCRIPTION: WATER SYSTEM INSTL			
SHEET:	ITEM/PART NO:	REV	
1 OF 4	000213557 / 30234501000		
REF:		1 05-Sep-2017	

- 4KJ TANK ASM-WATER,24 GAL
000013015 / 311570-01-000
- 45K TANK ASM-WATER,24 GAL
000078289 / 321367-01-000

FAUCET-GAL
192216-01-CHT

SHOWER-EXTERIOR
166291-02-000

DETAIL BE

DETAIL BB

STRAP
000006198 / 312506-01-CHT(2)
BOLT
000C26-06-28U(3)
NUT-SERT
039715-06-000(3)

DETAIL BC

NUT
000D39-08-00U

VIEW BA

- 9 A-5
- 9 CH-2
- 9 CI-3

SECTION BD-BD
(ROTATED)

PANEL-WATER PUMP
149477-02-CHT
SCREW
000G39-08-16U (4)
FOAM
140364-01-CHT
SCREW
000G39-08-24U (4)

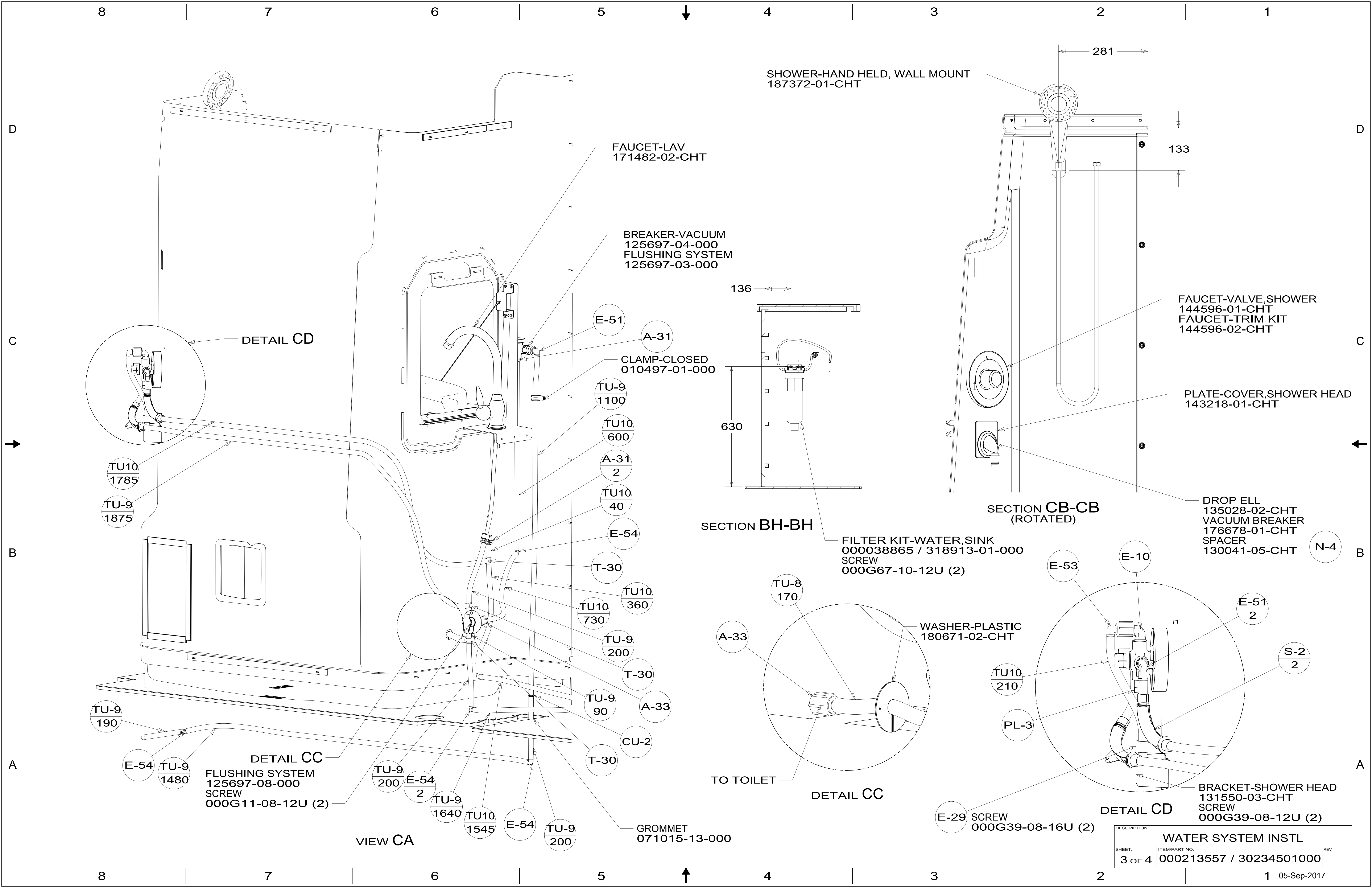
DETAIL BB
(SHOWN W/OUT TANK ASM)

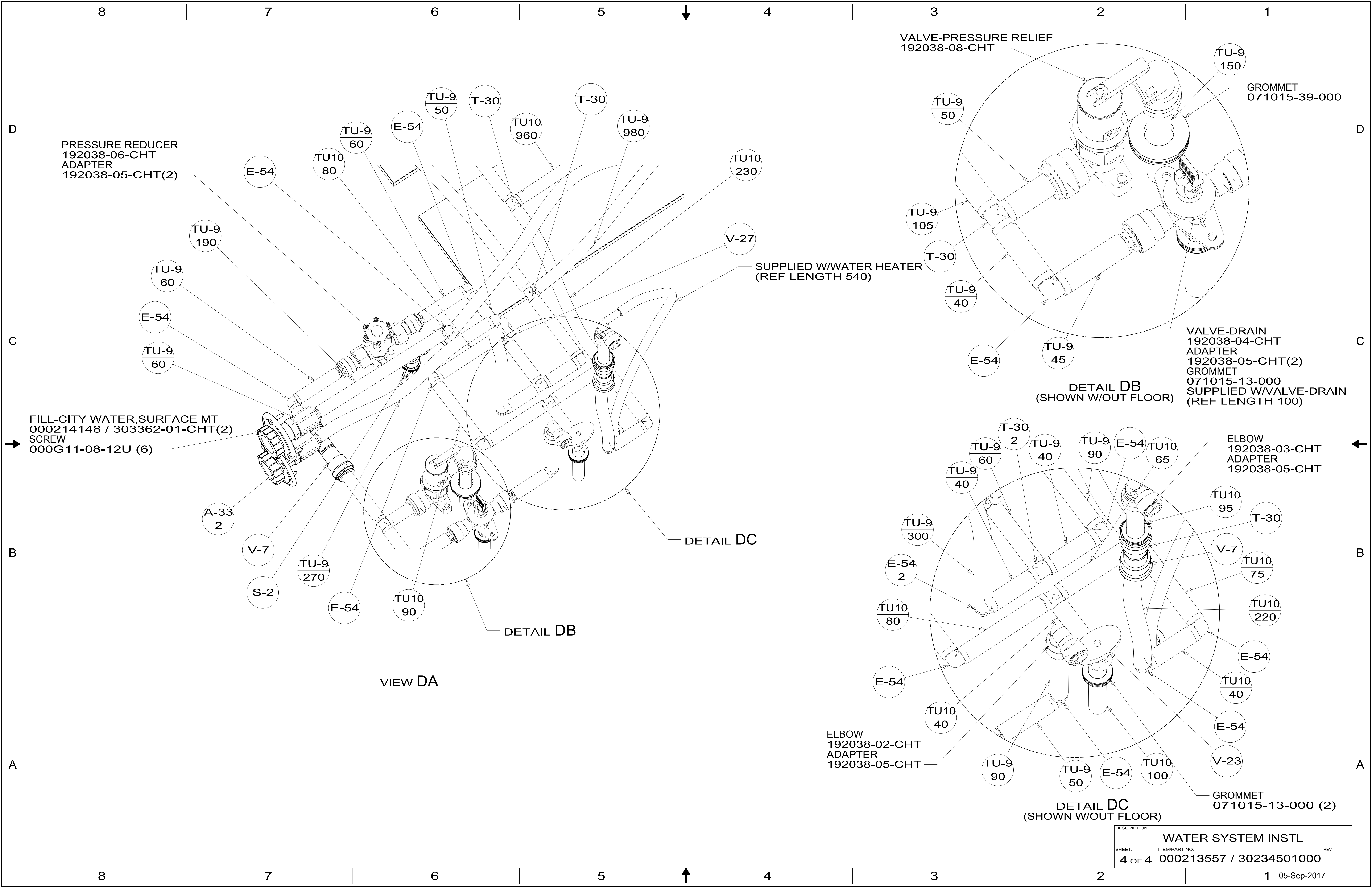
DETAIL BE

DETAIL BF
(SHOWN W/OUT FLOOR)

SECTION BG-BG

DESCRIPTION: WATER SYSTEM INSTL		
SHEET: 2 OF 4	ITEM/PART NO: 000213557 / 30234501000	REV





DESCRIPTION:		
WATER SYSTEM INSTL		
SHEET:	ITEM/PART NO.:	REV:
4 OF 4	000213557 / 30234501000	