

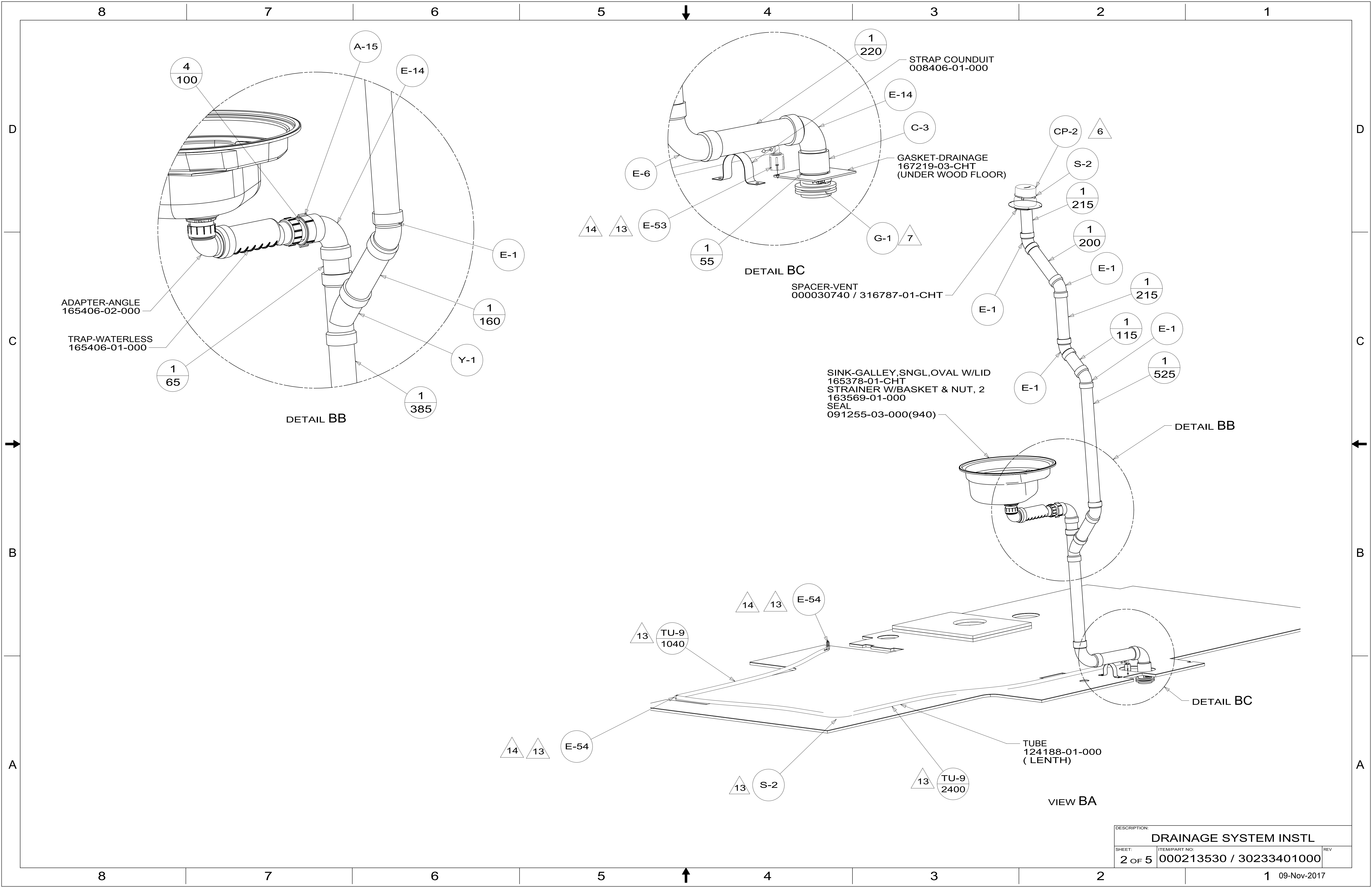
- 14. ALL CRIMP FITTINGS TO 1/2" PEX TUBING REQUIRE 1/2" CLAMP 140171-03-000.
- 13. FOR CALLOUTS SEE DWG NO. 303369-01-000.
- 12. REMOVE CAP FROM CONNECTOR 114974-01-000, INSTALL SCREEN 191399-01-000 OVER HOLE, RE-INSTALL CAP.
- 11. ATTACH SEAL TO BRACE WHERE IT CONTACTS HEATER PAD.
- 10. PREP THE SURFACE PER MANUFACTURERS INSTRUCTIONS BEFORE APPLYING THE HEATING PAD.
- 9. SEE WIRING INSTL-BODY FOR ELECTRICAL CONNECTIONS.
- 8. NIPPLE TO BE TRIMMED TO LENGTH ON INSTALL.
- 7. SECURE VENT PIPE WITH CLAMP 062401-02-000.
- 6. VENT PIPE MUST PROJECT 51 MIN AND 64 MAX ABOVE ROOF FOR PROPER FIT AND FUNCTION.
- 5. SEAL AROUND SHOWER WITH SILICONE.
- 4. SECURE DRAINAGE PIPES TO CABINET USING WIRE TIE 108046-02-000, AND SCREW 000G67-10-12U AT INTERVALS OF NOT MORE THAN 4 FEET APART.
- 3. ALL PIPE AND FITTINGS TO BE ASSEMBLED WITH SOLVENT 004020-01-000 (USA), 004020-02-000 (CAN)
- 2. SLOPE OF TRAP ARM MUST BE 6 PER 305 mm.
- 1. SLOPE OF HORIZONTAL PIPING TO BE MINIMUM OF 3 PER 305 mm.

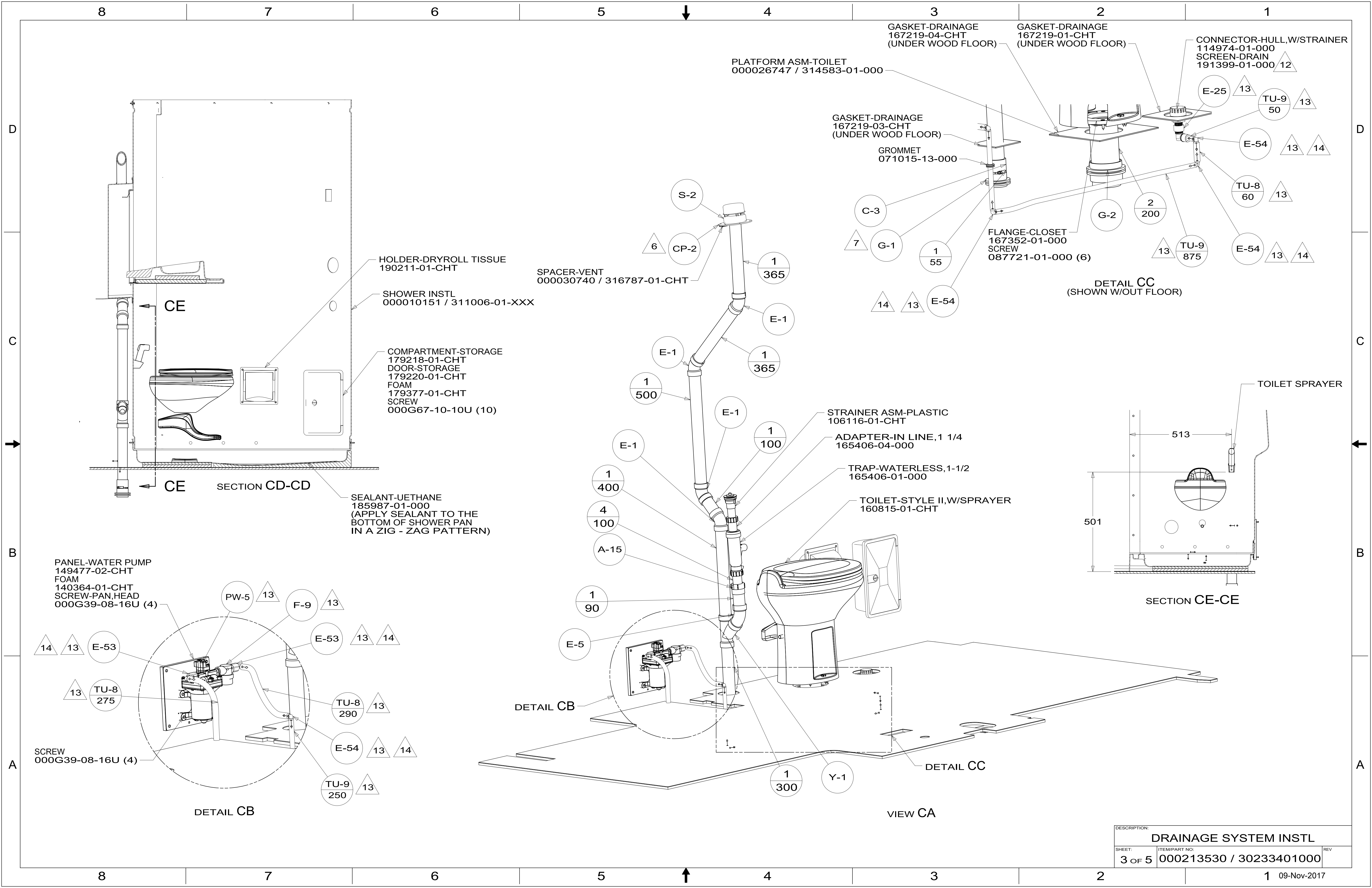
- 23T DRAINAGE SYSTEM-HEATED
- 265 CODES/STANDARDS-CSA/CMVSS
- 1B1 CODES/STANDARDS USA

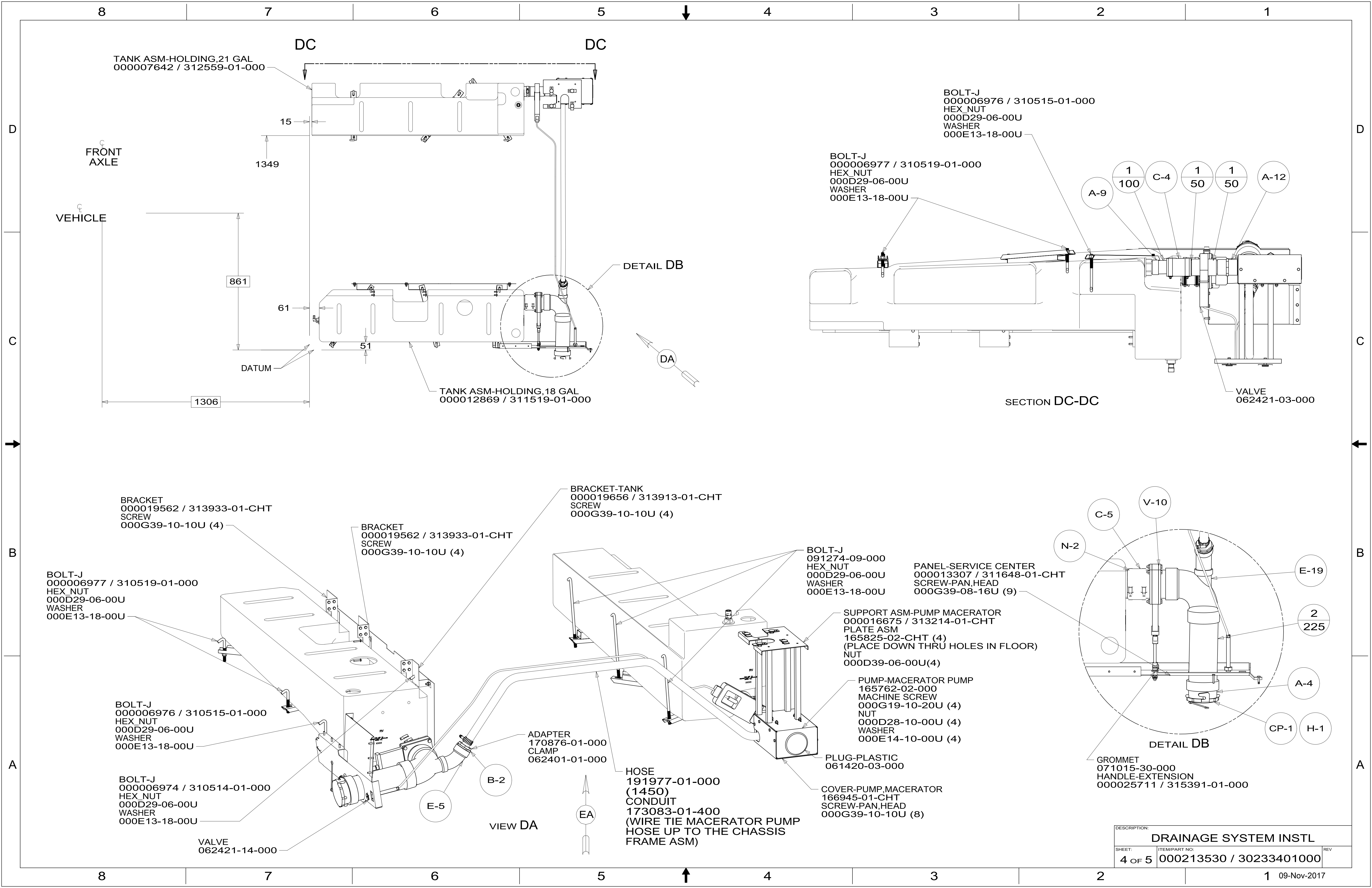
WINNEBAGO[®]
COPYRIGHT 2017 WINNEBAGO INDUSTRIES, INC.

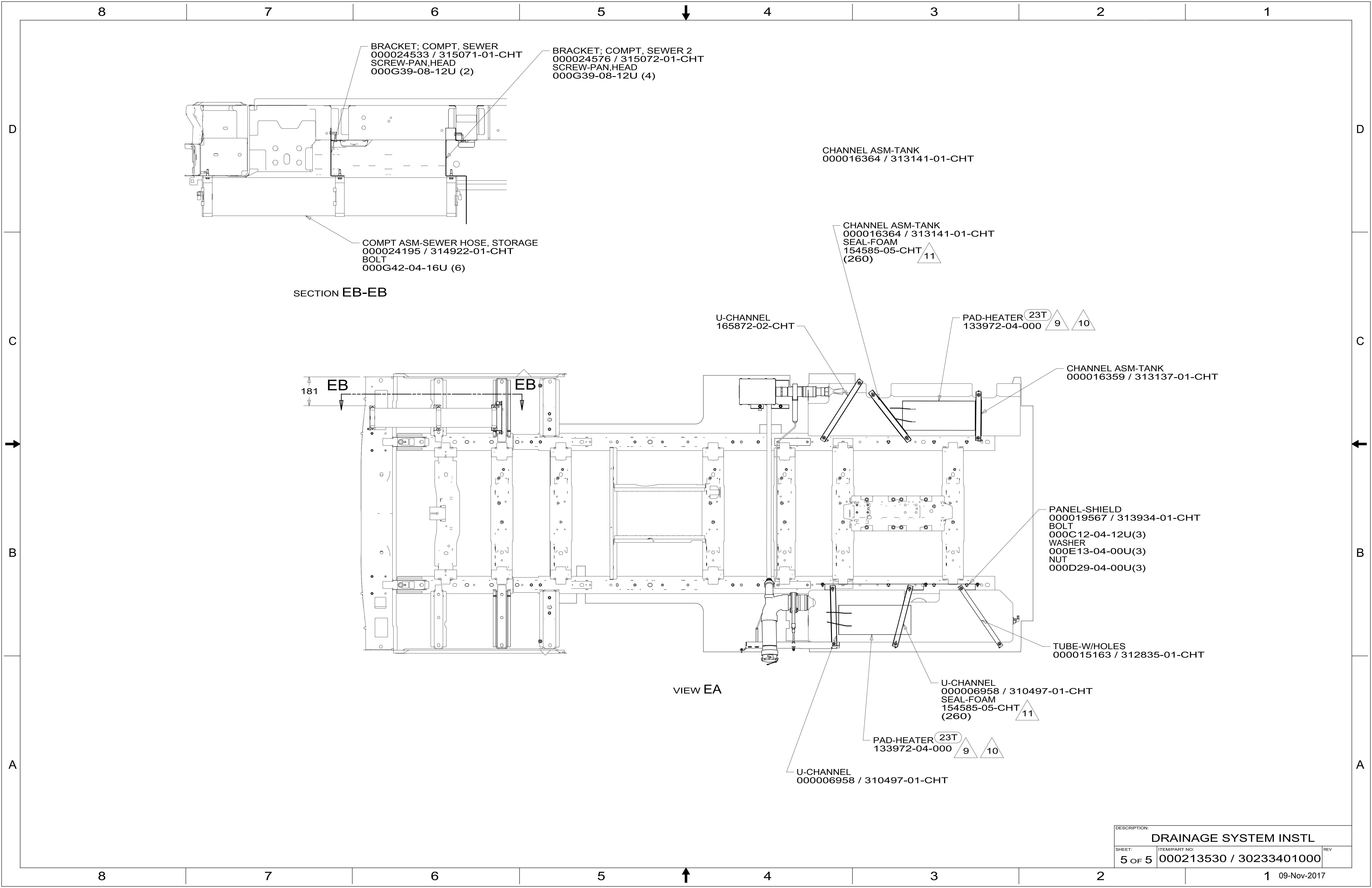
DSNR:		ALL DIMENSIONS ARE IN MILLIMETERS	
DIFFR:			
UNSPECIFIED TOLERANCES:	MATERIAL:		
WHOLE DIM (X) :		3	
ONE-PLACE (X.X) :		1.5	
TWO-PLACE (X.XX) :		0.50	
ANGLE :		1°	
REFER TO ES0018 FOR FASTENER TIGHTENING GUIDELINES		WEIGHT: (LBS)	FIRST USED: (REF)
			17 848P
DESCRIPTION:			
DRAINAGE SYSTEM INSTL			
SHEET:	ITEM/PART NO.:	REV	
1 OF 5	000213530 / 30233401000		

X-X
FOR DRAINAGE CALLOUTS SEE DWG NO. 000211962 / 303370-01-000









BRACKET; COMPT, SEWER
000024533 / 315071-01-CHT
SCREW-PAN,HEAD
000G39-08-12U (2)

BRACKET; COMPT, SEWER 2
000024576 / 315072-01-CHT
SCREW-PAN,HEAD
000G39-08-12U (4)

CHANNEL ASM-TANK
000016364 / 313141-01-CHT

COMPT ASM-SEWER HOSE, STORAGE
000024195 / 314922-01-CHT
BOLT
000G42-04-16U (6)

SECTION EB-EB

CHANNEL ASM-TANK
000016364 / 313141-01-CHT
SEAL-FOAM
154585-05-CHT
(260) 11

U-CHANNEL
165872-02-CHT

PAD-HEATER ^{23T}
133972-04-000 9 10

CHANNEL ASM-TANK
000016359 / 313137-01-CHT

181
EB

PANEL-SHIELD
000019567 / 313934-01-CHT
BOLT
000C12-04-12U(3)
WASHER
000E13-04-00U(3)
NUT
000D29-04-00U(3)

TUBE-W/HOLES
000015163 / 312835-01-CHT

VIEW EA

U-CHANNEL
000006958 / 310497-01-CHT
SEAL-FOAM
154585-05-CHT
(260) 11

PAD-HEATER ^{23T}
133972-04-000 9 10

U-CHANNEL
000006958 / 310497-01-CHT

DESCRIPTION:		
DRAINAGE SYSTEM INSTL		
SHEET:	ITEM/PART NO:	REV
5 OF 5	000213530 / 30233401000	