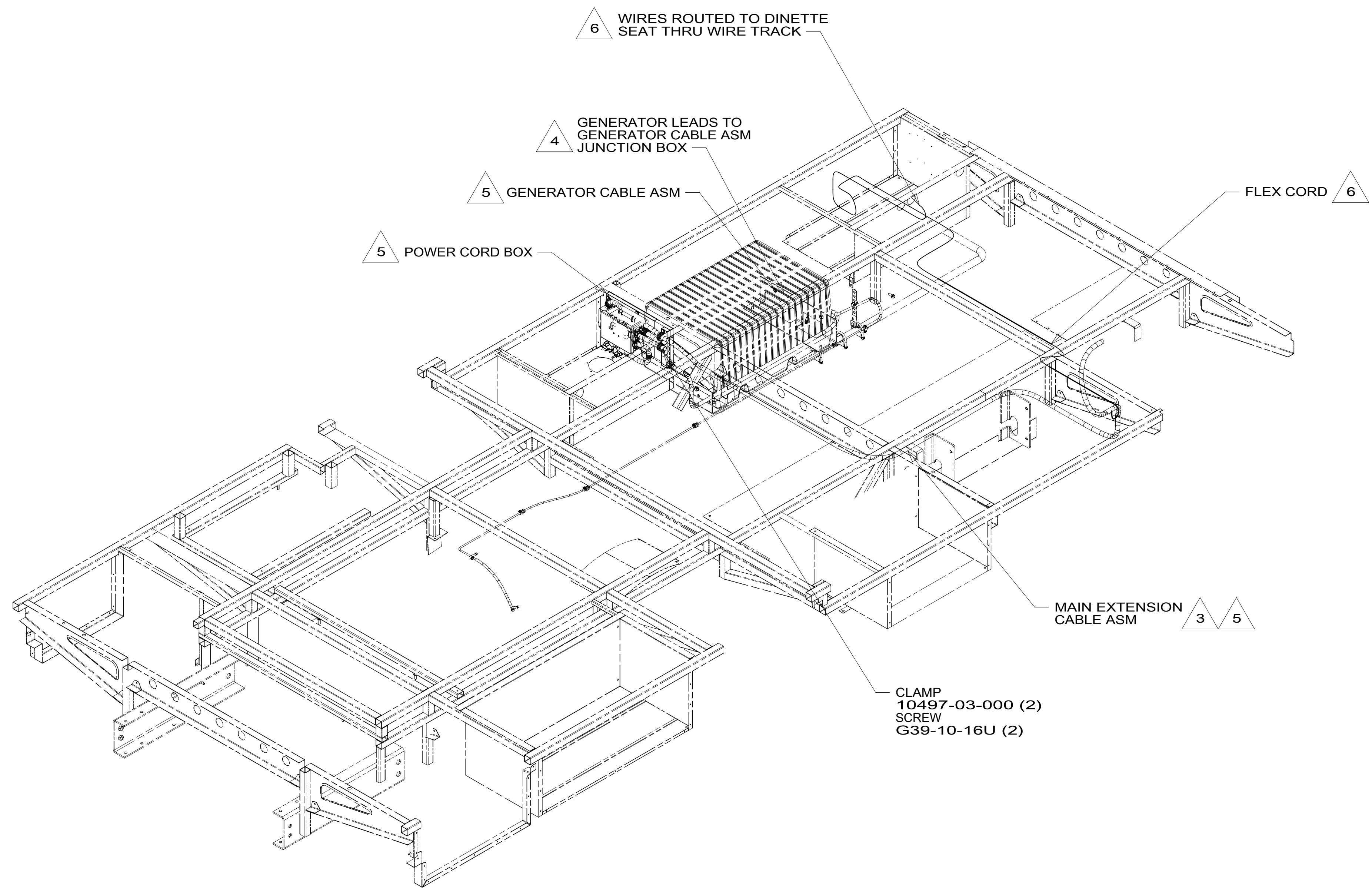


8 7 6 5 4 3 2 1

D
C
B
A

D
C
B
A



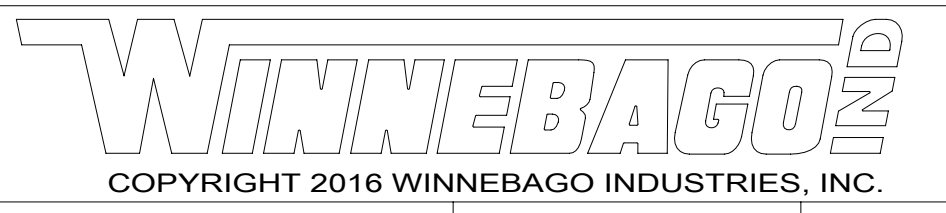
- 6 WIRE IS PART OF WIRE ASM-CHASSIS.
 - 5 SEE LOAD CENTER/ATS ASM FOR ADDITIONAL INFORMATION.
 - 4 SEE GENERATOR INSTL FOR ADDITIONAL INFORMATION.
 - 3 ROUTE WIRE THRU FLOOR.
2. ALL 110V WIRE TO BE CLAMPED WITH CLAMP 10497-05-000 WITHIN 200MM OF OUTLET BOXES, USE SCREW G67-10-12B.
 1. AT MINIMUM ALL WIRES TO BE SUPPORTED AND SECURED PER CODE REQUIREMENTS. USE CLAMP 10495 OR 10497 OR WIRE TIE 8343 OR 108046 AND SCREW G67-XX-XXX OR G56-XX-XXX AS APPROPRIATE FOR INSTALLATION.

NOTES:

FOR ELECTRICAL TORQUE SPECIFICATIONS SEE DWG NO. 128783-01-000

FOR ELECTRICAL CALLOUTS SEE DWG NO. 121339-01-000

- 265 CODES/STANDARDS-CSA/CMVSS
- 1B1 CODES/STANDARDS USA
- 1B1 265

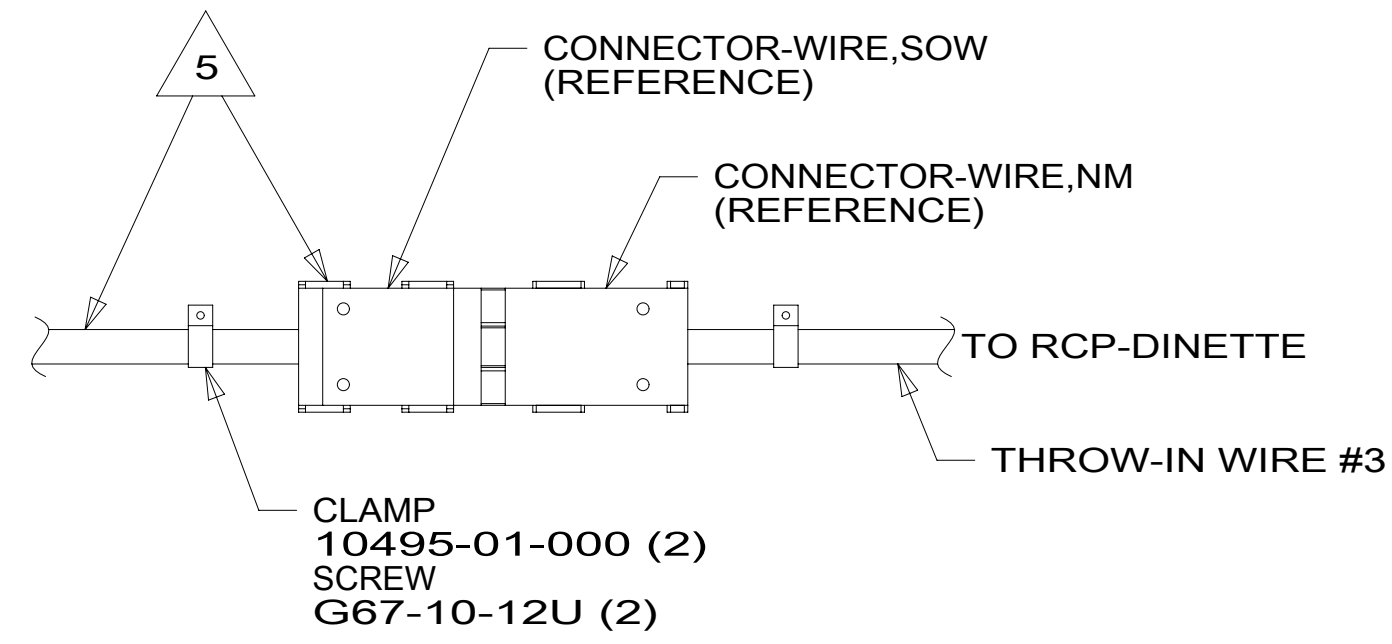


DSNR:	ALL DIMENSIONS ARE IN MILLIMETERS	
DFFR:	MATERIAL:	
UNSPECIFIED TOLERANCES:		
WHOLE DIM (X) :	3	
ONE-PLACE (X.X) :	1.5	
TWO-PLACE (X.XX) :	0.50	
ANGLE :	1°	
REFER TO ES0018 FOR FASTENER TIGHTENING GUIDELINES	WEIGHT: (LBS)	FIRST USED:
		17 326A

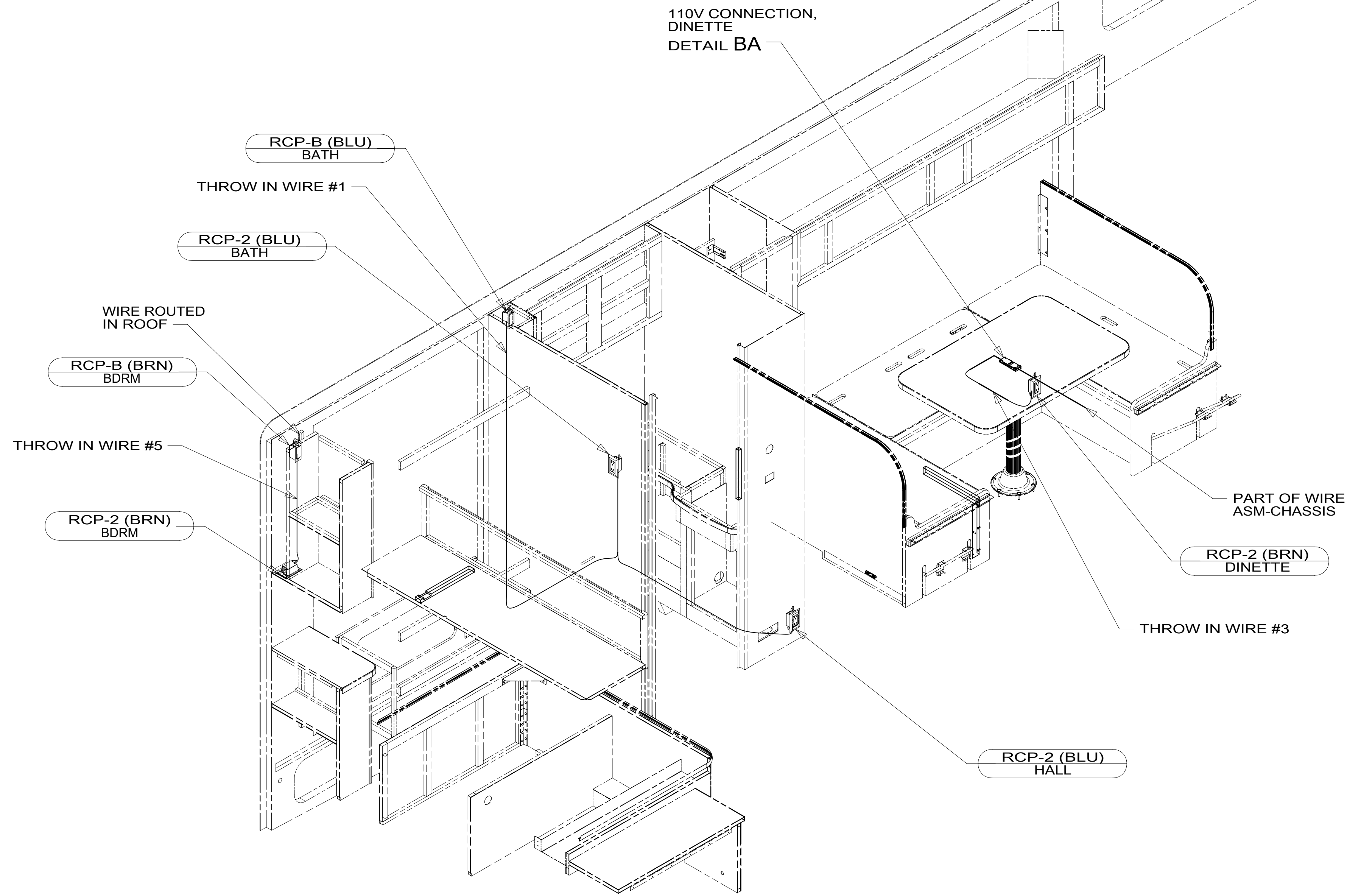
WIRING INSTL-BODY, 110V

SHEET:	ITEM/PART NO.:	REF:
1 OF 4	000213334 / 30169701000	1 09-Dec-2016

8 7 6 5 4 3 2 1



DETAIL BA



- 5 CORD & CONNECTOR ARE PART OF WIRE ASM-CHASSIS.
4. FOR MORE INFORMATION SEE WIRING DIAGRAM-BODY, 110V.
3. ALL GROUND WIRE TO BE COVERED WITH TUBING 8041-02-000.
2. ALL 110V WIRE TO BE CLAMPED WITH CLAMP 10497-05-000 WITHIN 200MM OF OUTLET BOXES, USE SCREW G67-10-12B.
1. AT MINIMUM ALL WIRES TO BE SUPPORTED AND SECURED PER CODE REQUIREMENTS. USE CLAMP 10495 OR 10497 OR WIRE TIE 8343 OR 108046 AND SCREW G67-XX-XXX OR G56-XX-XXX AS APPROPRIATE FOR INSTALLATION.

NOTES:

265 CODES/STANDARDS-CSA/CMVSS

1B1 CODES/STANDARDS USA

1B1 265

FOR ELECTRICAL TORQUE SPECIFICATIONS SEE DWG NO. 128783-01-000

FOR ELECTRICAL CALLOUTS SEE DWG NO. 121339-01-000

DESCRIPTION:
WIRING INSTL-BODY, 110V

SHEET: 2 OF 4 ITEM/PART NO.: 000213334 / 30169701000 REV

D

D

C

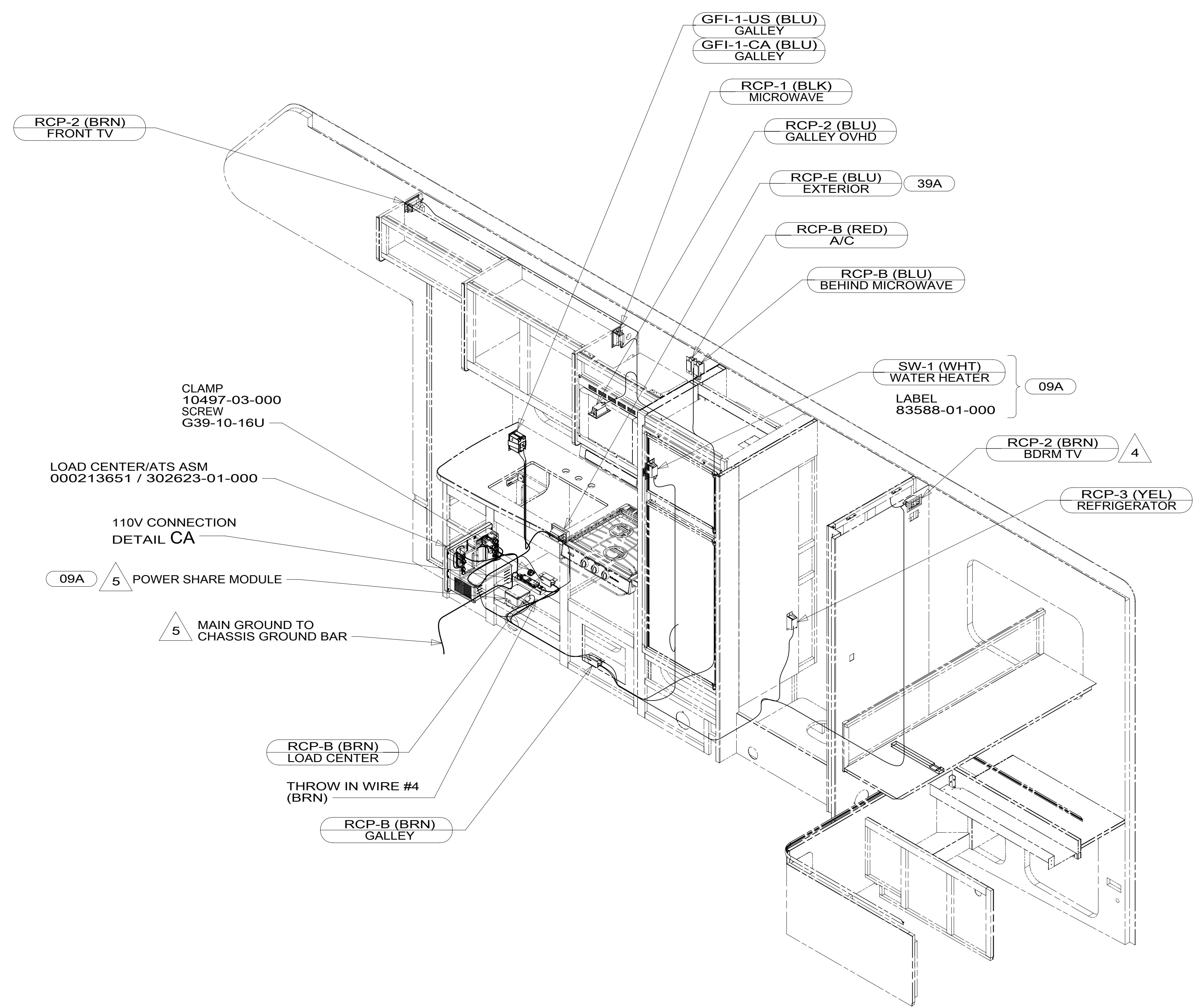
C

B

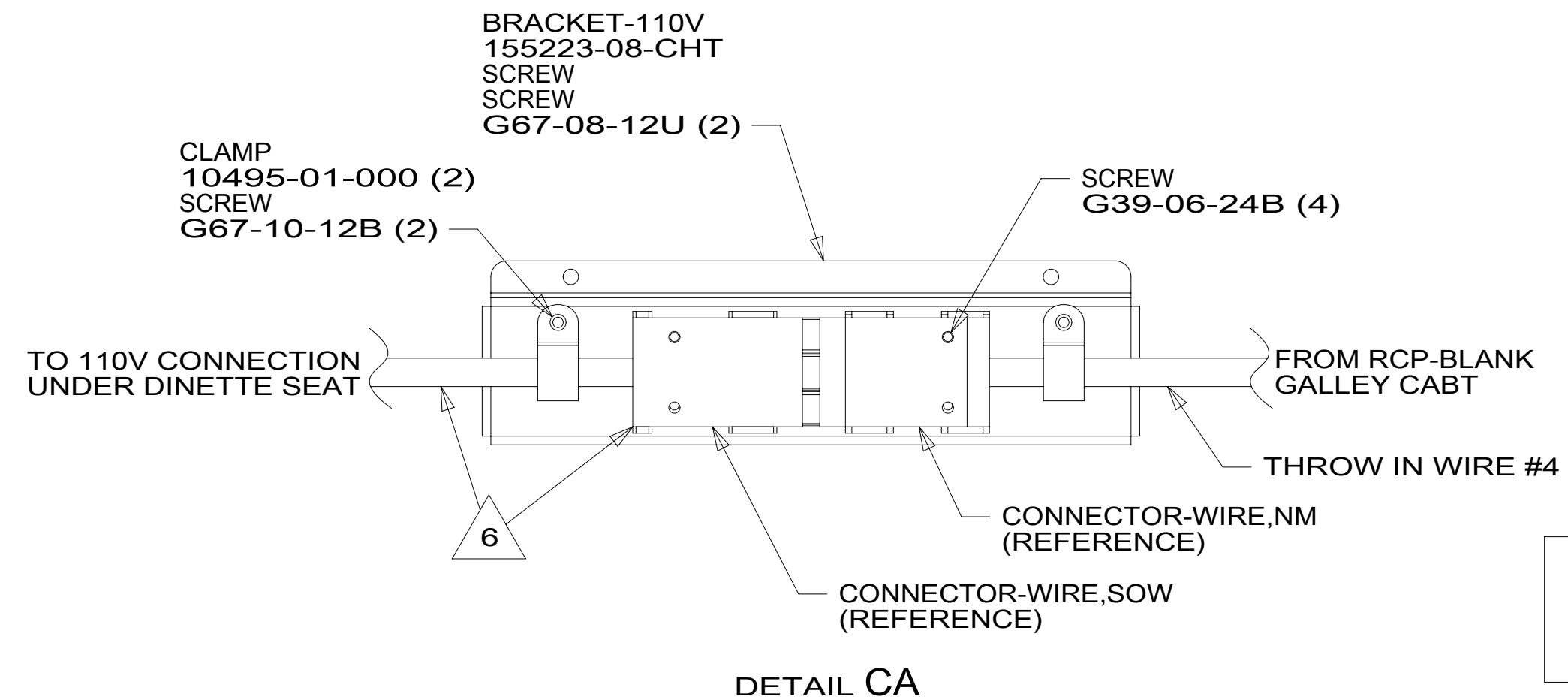
B

A

A



- NOTES:
- 6 CORD & CONNECTOR ARE PART OF WIRE ASM-CHASSIS.
 - 5 SEE LOAD CENTER/ATS ASM FOR ADDITIONAL INFORMATION.
 - 4 SEE WIRING INST-TV/DVD FOR ADDITIONAL INFORMATION.
 - 3. ALL GROUND WIRE TO BE COVERED WITH TUBING 8041-02-000.
 - 2. ALL 110V WIRE TO BE CLAMPED WITH CLAMP 10495-05-000 WITHIN 200MM OF OUTLET BOXES, USE SCREW G67-10-12B.
 - 1. AT MINIMUM ALL WIRES TO BE SUPPORTED AND SECURED PER CODE REQUIREMENTS. USE CLAMP 10495 OR 10497 OR WIRE TIE 8343 OR 108046 AND SCREW G67-XX-XXX OR G56-XX-XXX AS APPROPRIATE FOR INSTALLATION.

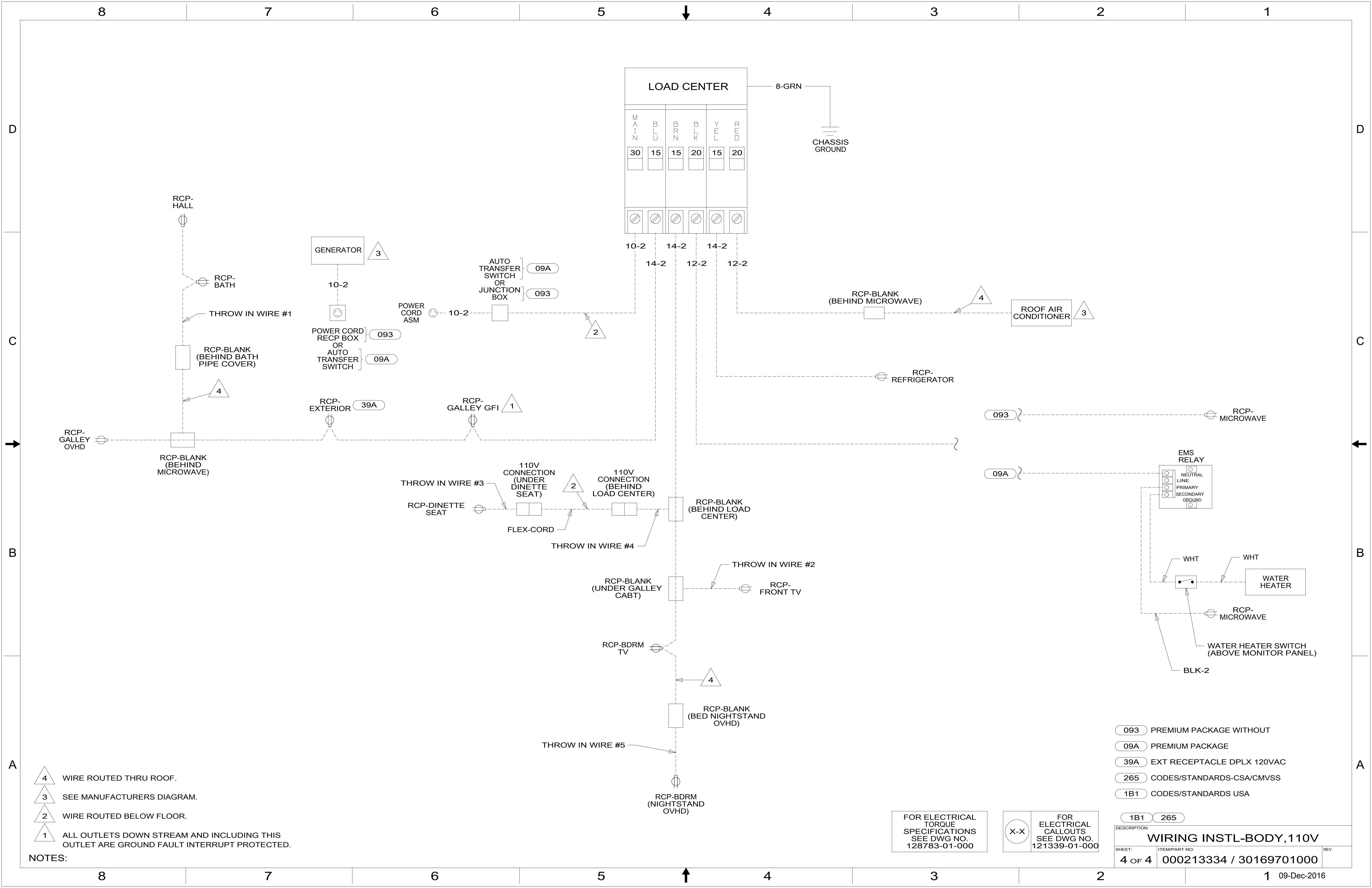


FOR ELECTRICAL TORQUE SPECIFICATIONS SEE DWG NO. 128783-01-000

FOR ELECTRICAL CALLOUTS SEE DWG NO. 121339-01-000

- 09A PREMIUM PACKAGE
- 39A EXT RECEPTACLE DPLX 120VAC
- 265 CODES/STANDARDS-CSA/CMVSS
- 1B1 CODES/STANDARDS USA

DESCRIPTION:		1B1 265	
WIRING INSTL-BODY, 110V			
SHEET:	ITEM/PART NO.:	REV:	
3 OF 4	000213334 / 30169701000		

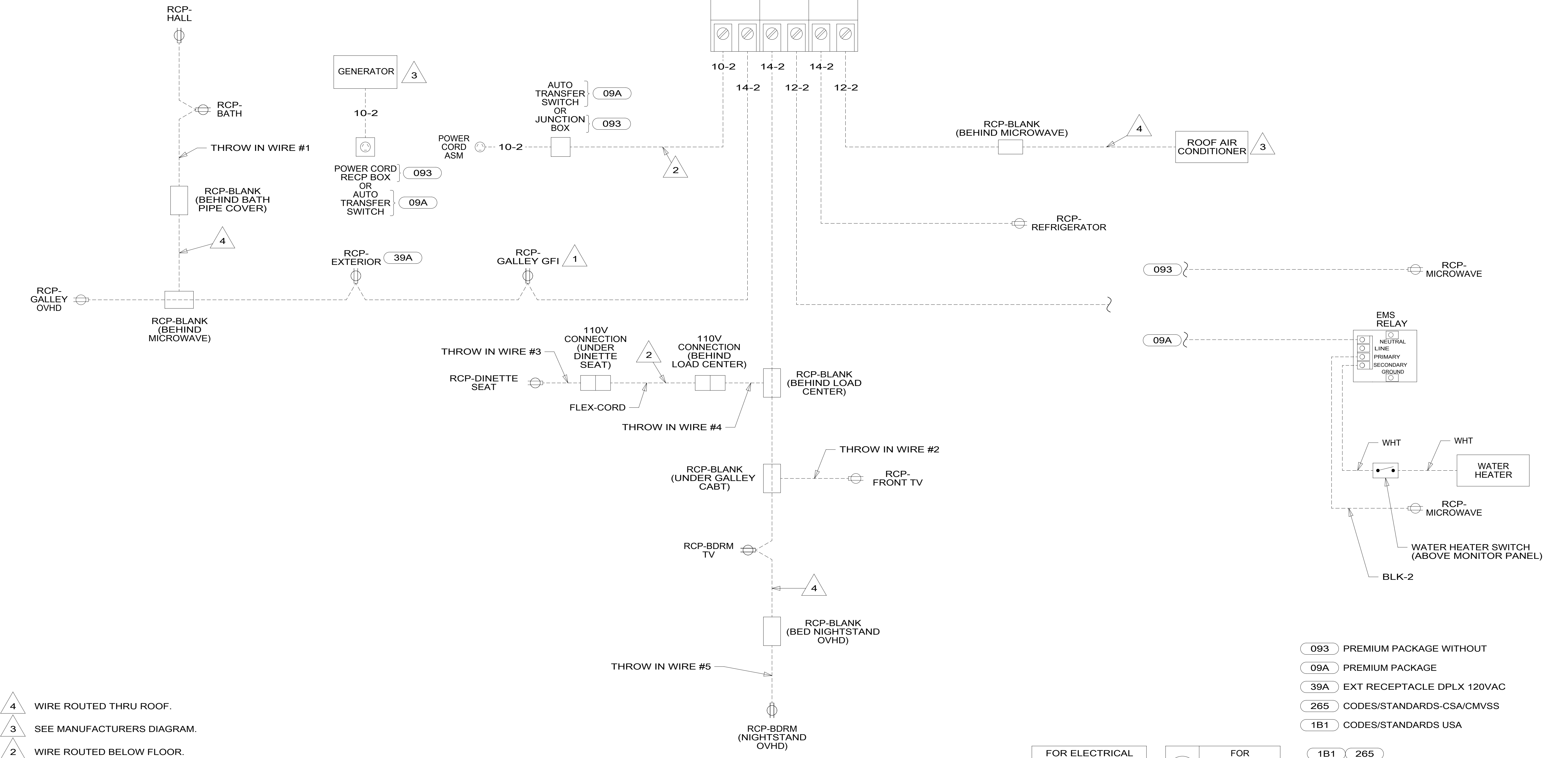


LOAD CENTER

MAIN	BLU	BRN	BLK	YEL	RED
30	15	15	20	15	20

8-GRN
CHASSIS GROUND

10-2 14-2 14-2
14-2 12-2 12-2



- NOTES:**
- 4 WIRE ROUTED THRU ROOF.
 - 3 SEE MANUFACTURERS DIAGRAM.
 - 2 WIRE ROUTED BELOW FLOOR.
 - 1 ALL OUTLETS DOWN STREAM AND INCLUDING THIS OUTLET ARE GROUND FAULT INTERRUPT PROTECTED.

- 093 PREMIUM PACKAGE WITHOUT
- 09A PREMIUM PACKAGE
- 39A EXT RECEPTACLE DPLX 120VAC
- 265 CODES/STANDARDS-CSA/CMVSS
- 1B1 CODES/STANDARDS USA

FOR ELECTRICAL TORQUE SPECIFICATIONS SEE DWG NO. 128783-01-000

FOR ELECTRICAL CALLOUTS SEE DWG NO. 121339-01-000

DESCRIPTION:
WIRING INSTL-BODY, 110V

SHEET: 4 OF 4 ITEM/PART NO.: 000213334 / 30169701000 REV: