

- 8 SEE DETAIL FA FOR ADDITIONAL INFORMATION.
- 7 WIRE TO BE MARKED BY WRAP OF 19 MM WIDE RED TAPE WITHIN 150 MM OF END.
- 6 CABLE MARKED WITH PURPLE TAPE.
- 5 CABLE MARKED WITH BLUE TAPE.
- 4 CABLE MARKED WITH GREEN TAPE.
- 3 CABLE MARKED WITH YELLOW TAPE.
- 2 WIRING PART OF WIRE ASM-CHASSIS.

1. ROUTE TANK SENSOR WIRES SO THEY DO NOT PASS OVER SENSORS. USE WIRE TIE MOUNT 155366-01-000 AS NEEDED. TANK SURFACE MUST BE CLEANED USING ISOPROPYL ALCOHOL AND PRIME WITH PRIMER 94.

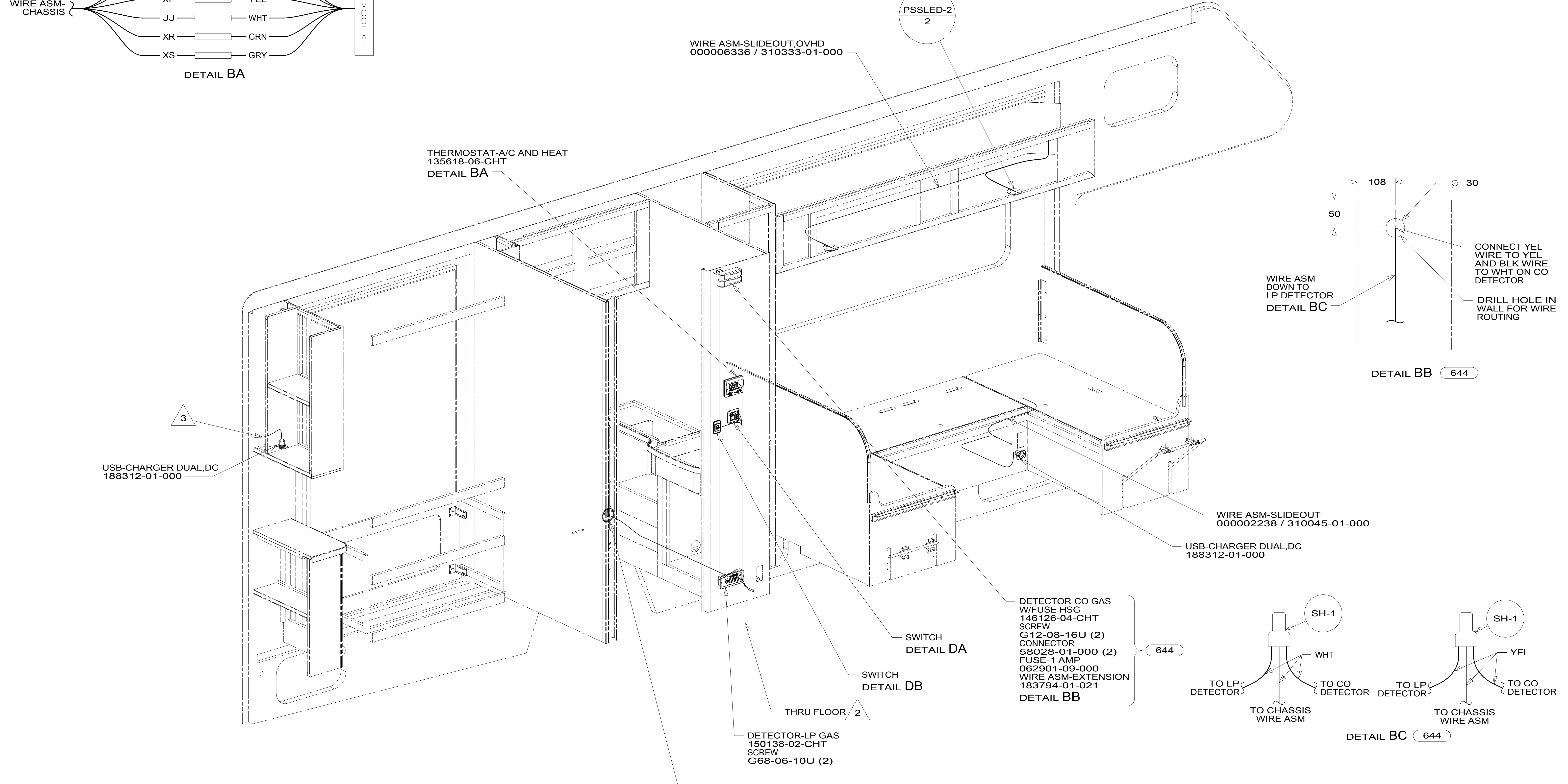
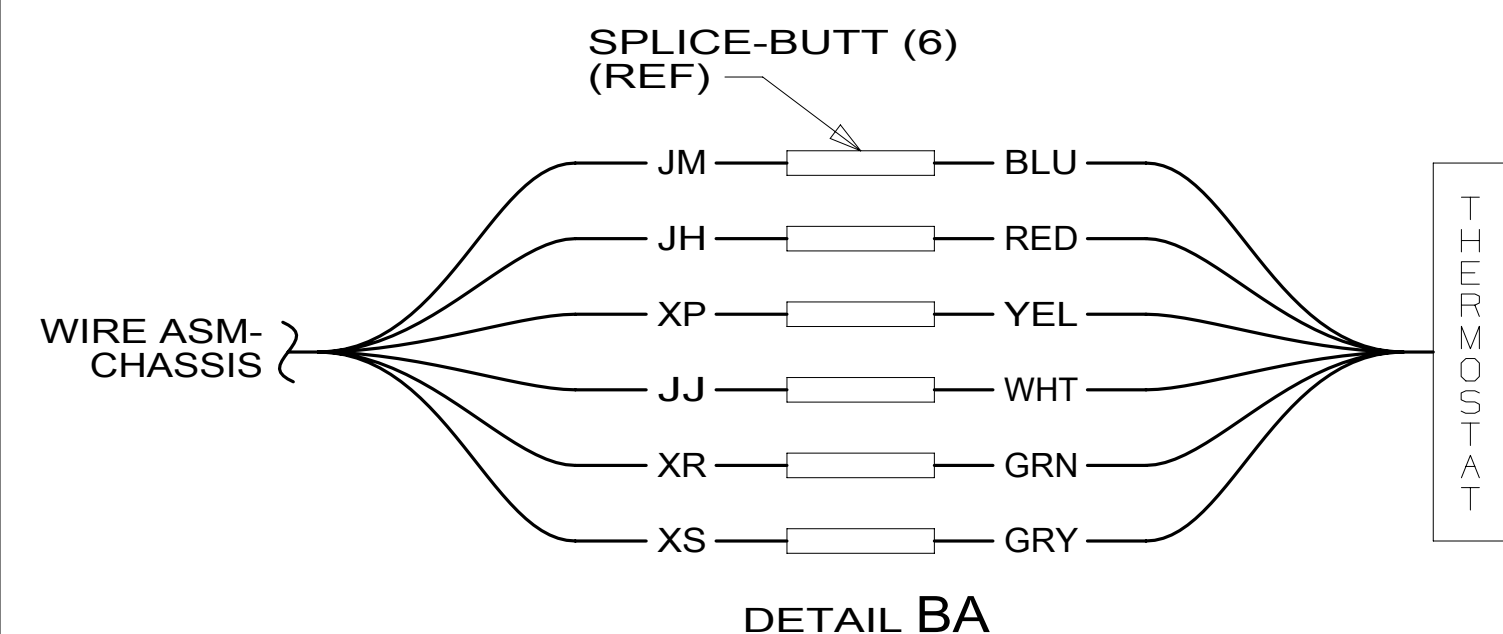
NOTES:

FOR ELECTRICAL TORQUE SPECIFICATIONS SEE DWG NO. 128783-01-000

FOR ELECTRICAL CALLOUTS SEE DWG NO. 121339-01-000

- 23R DRAINAGE SYSTEM/HEAT-PREWIRE
- 23T DRAINAGE SYSTEM-HEATED
- 38E CONVENIENCE PACKAGE
- 644 GREAT ALASKAN RENTAL PACKAGE
- 640 RENTAL - GAH WITHOUT
- 265 CODES/STANDARDS-CSA/CMVSS
- 1B1 CODES/STANDARDS USA

<b>WINNEBAGO</b> COPYRIGHT 2016 WINNEBAGO INDUSTRIES, INC.	
DSNR:	ALL DIMENSIONS ARE IN MILLIMETERS
DIFTR:	
UNSPECIFIED TOLERANCES:	MATERIAL:
WHOLE DIM (X) : 3	
ONE-PLACE (X.X) : 1.5	
TWO-PLACE (X.XX) : 0.50	
ANGLE : 1°	
REFER TO ES0018 FOR FASTENER TIGHTENING GUIDELINES	WEIGHT: (LBS) FIRST USED: <b>17 326A</b>
<b>DESCRIPTION:</b> <b>WIRING INSTL-BODY, 12V</b>	
SHEET: <b>1 OF 6</b>	ITEM/PART NO.: <b>000213333 / 30169501000</b>
REF:	REV:



- 3 WIRING PART OF WIRE ASM-BACKWALL.
- 2 WIRING PART OF WIRE ASM-CHASSIS.

NOTES:

- ROUTE TANK SENSOR WIRES SO THEY DO NOT PASS OVER SENSORS. USE WIRE TIE MOUNT 155366-01-000 AS NEEDED. TANK SURFACE MUST BE CLEANED USING ISOPROPYL ALCOHOL AND PRIME WITH PRIMER 94.

FOR ELECTRICAL TORQUE SPECIFICATIONS SEE DWG NO. 128783-01-000

FOR ELECTRICAL CALLOUTS SEE DWG NO. 121339-01-000

- 644 GREAT ALASKAN RENTAL PACKAGE
- 265 CODES/STANDARDS-CSA/CMVSS
- 1B1 CODES/STANDARDS USA

DESCRIPTION:	1B1 265	
<b>WIRING INSTL-BODY, 12V</b>		
SHEET:	ITEM/PART NO.:	REV:
2 OF 6	000213333 / 30169501000	

644 PLATE-WALL,POWER SUPPLY  
169802-01-000

644 SWITCH  
DETAIL DC

SPLITTER-TV, 3-WAY  
086756-02-000

PLATE-WALL,POWER SUPPLY  
169802-01-000  
179004-02-CHT  
1J8  
193

WIRE ASM-ENTERTAINMENT CENTER  
000006332 / 310332-01-000  
644

SWITCH  
DETAIL DF

SWITCH  
DETAIL DG

TO WATER HEATER

SWITCHES  
DETAIL DH

TO REFRIGERATOR

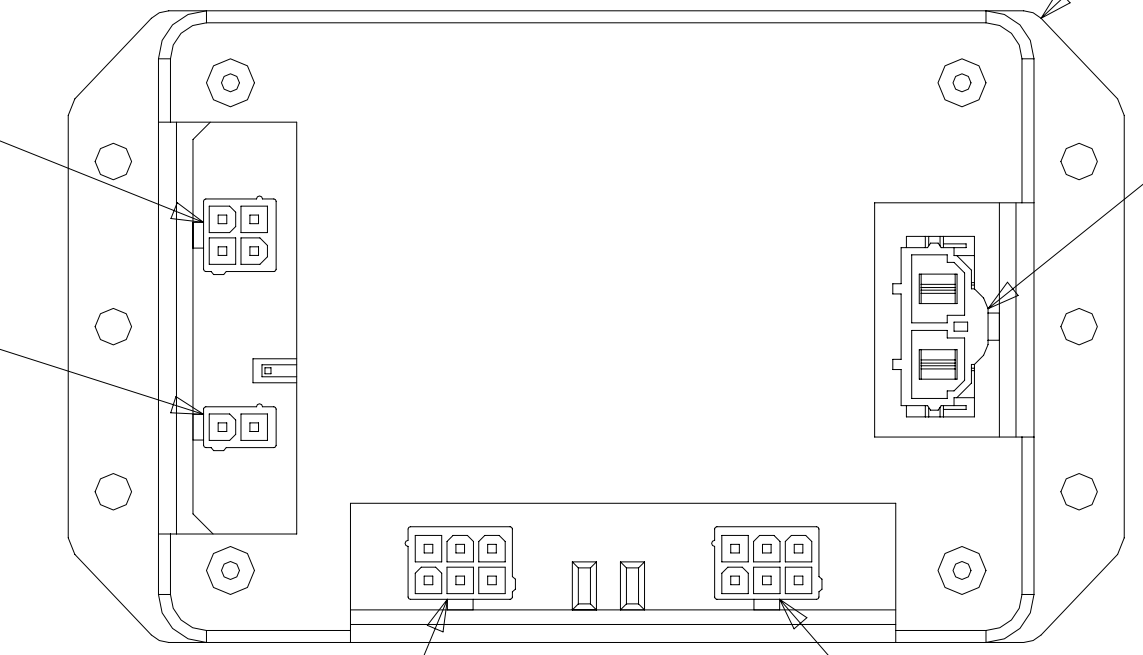
WALL PLATE/RCP  
076319-09-000  
68T

4 PIN HSG  
CIRCUITS:  
ACC,ACD,  
HHH,HHG

2 PIN HSG  
CIRCUIT:  
DDJ

CONTROL-SLIDEOUT  
189400-01-000  
SCREW  
G11-08-12U (4)

2 PIN HSG  
CIRCUITS:  
XXW,XXV



DETAIL CA 2

HDMI SPLITTER  
(REF)

640 SWITCH  
DETAIL DC

SWITCH  
DETAIL DD

SWITCH  
DETAIL DE

LOAD CENTER  
DETAIL DM

52N 644 WIRE ASM-AWNING CONTROL  
000006616 / 310399-01-000

RELAY  
063912-02-000

PLATE-WALL,  
COAX EXTERIOR  
183638-01-CHT

640 644 PANEL-MONITOR  
134940-01-CHT  
38E 134940-06-CHT

TO FURNACE

RELAY  
063912-02-000

ADAPTER-COAX  
082134-01-000

68X 6 5 CABLE-HDMI  
165308-02-000

WIRE ASM-RIGHT  
000214340 / 303392-01-000

2 TO WATER PUMP

3 4 640 WIRE ASM-WATER TANK  
194334-01-000  
644 38E 151317-01-000

SLIDEOUT MOTOR  
CABLE (BRN)  
2

WIRE ASM-CHASSIS  
PASS THRU FLOOR

SWITCH  
DETAIL DJ

SLIDEOUT MOTOR  
CABLE (YEL)  
2

PSSLED-2  
2

COVER-PIPE  
152078-35-CHT

2

CLAMPS  
010495-02-000 (11)

PSSLED-2

2

COVER-ELECTRICAL  
194965-01-CHT  
LABEL  
098379-09-000  
SCREW  
G11-08-12U (4)  
SLIDEOUT CONTROL  
DETAIL CA

FOR ELECTRICAL  
TORQUE  
SPECIFICATIONS  
SEE DWG NO.  
128783-01-000

FOR ELECTRICAL  
CALLOUTS  
SEE DWG NO.  
121339-01-000

- 193 TV ANT-DIGITAL AMPLIFIED
- 1J8 TV ANTENNA-OMNIDIRECTIONAL
- 52N AWNING - PATIO, ELECTRIC
- 68T TV - BEDROOM WITHOUT
- 38E CONVENIENCE PACKAGE
- 640 RENTAL - GAH WITHOUT
- 644 GREAT ALASKAN RENTAL PACKAGE
- 265 CODES/STANDARDS-CSA/CMVSS
- 1B1 CODES/STANDARDS USA

1B1 265

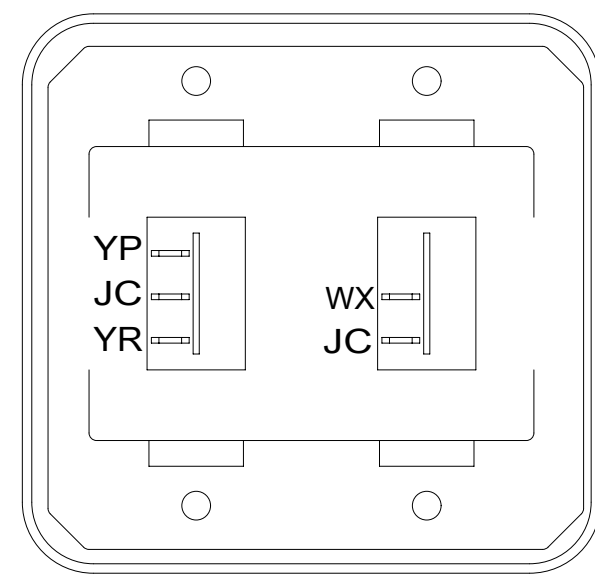
DESCRIPTION: <b>WIRING INSTL-BODY, 12V</b>		
SHEET: <b>3 OF 6</b>	ITEM/PART NO: <b>000213333 / 30169501000</b>	REV

- 6 HDMI CABLE TO BE ROUTED WITH WIRE ASM-RIGHT FROM BEDROOM TV TO ENTRYWAY OVHD CABINET.
- 5 SEE WIRING INSTL-TV/DVD FOR ADDITIONAL INFORMATION.
- 4 SEE DETAIL FA FOR ADDITIONAL INFORMATION.
- 3 MARK WIRES WITH ORANGE TAPE.
- 2 WIRING PART OF WIRE ASM-CHASSIS.

1. ROUTE TANK SENSOR WIRES SO THEY DO NOT PASS OVER SENSORS. USE WIRE TIE MOUNT 155366-01-000 AS NEEDED. TANK SURFACE MUST BE CLEANED USING ISOPROPYL ALCOHOL AND PRIME WITH PRIMER 94.

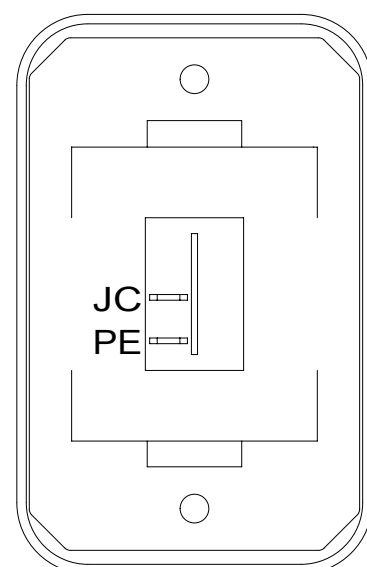
NOTES:





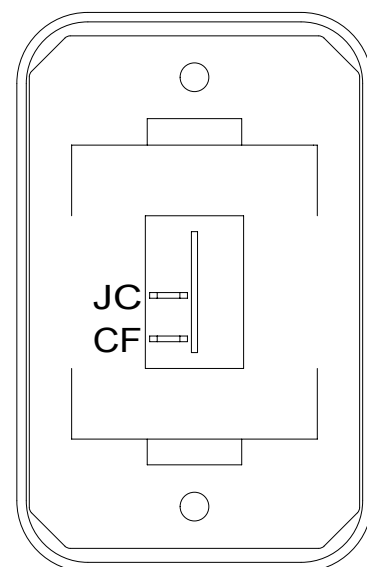
DETAIL DA

SWITCH-ROCKER  
135740-01-CHT  
135740-02-CHT  
SWITCH-BASE  
135741-02-CHT  
SWITCH-BEZEL  
135742-02-CHT  
SCREW  
G11-08-08U (4)



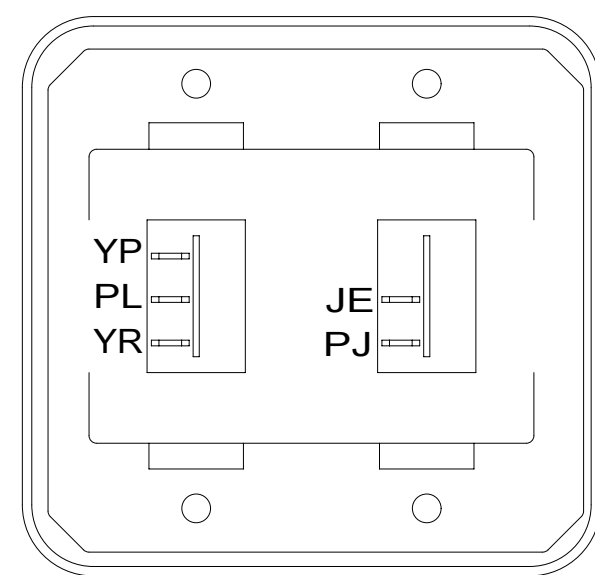
DETAIL DB

SWITCH-ROCKER  
135740-01-CHT  
SWITCH-BASE  
135741-01-CHT  
SWITCH-BEZEL  
135742-01-CHT  
SCREW  
G11-08-08U (2)



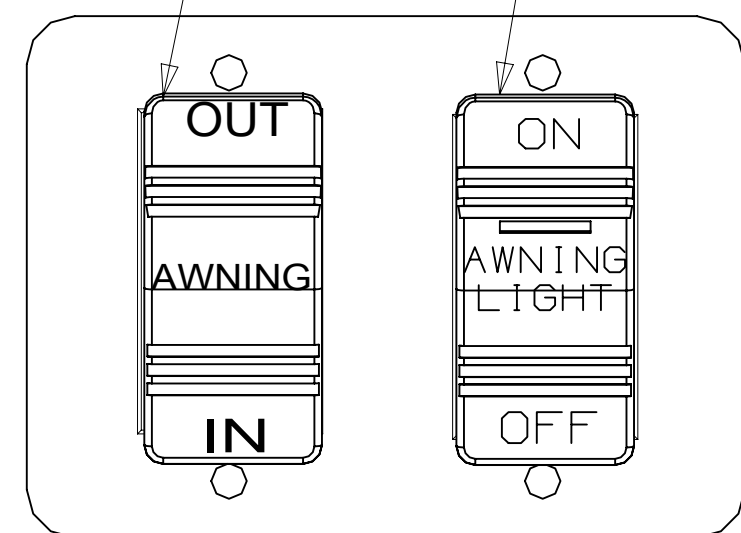
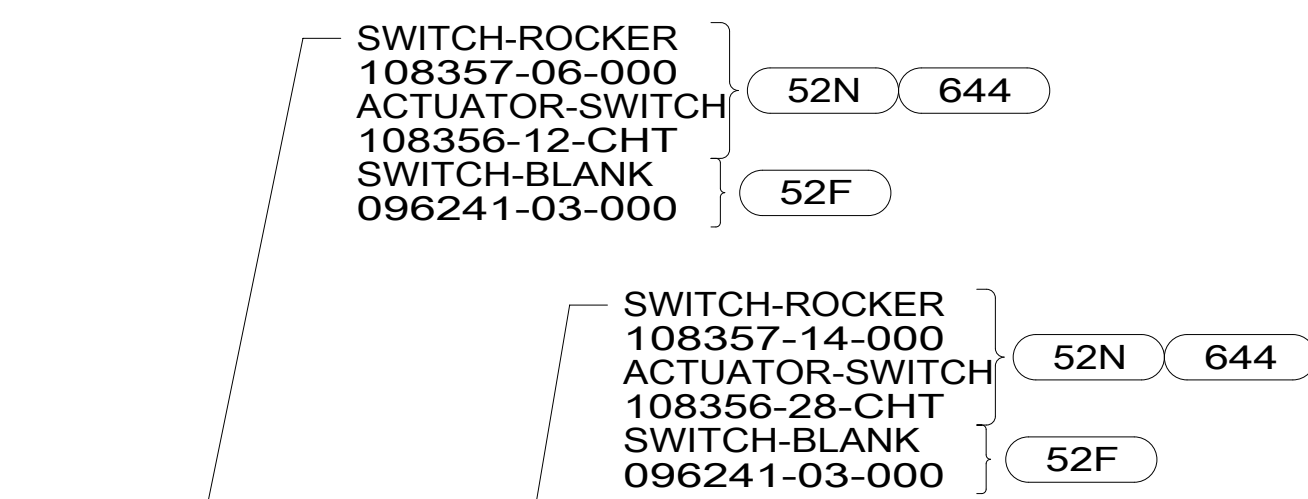
DETAIL DC

SWITCH-ROCKER  
135740-01-CHT  
SWITCH-BASE  
135741-01-CHT  
SWITCH-BEZEL  
135742-01-CHT  
SCREW  
G11-08-08U (2)



DETAIL DD

SWITCH-ROCKER  
135740-01-CHT  
135740-02-CHT  
SWITCH-BASE  
135741-02-CHT  
SWITCH-BEZEL  
135742-02-CHT  
SCREW  
G11-08-08U (4)



DETAIL DE

PLATE-SWITCH  
158431-17-CHT  
SCREW  
G11-06-10U (4)

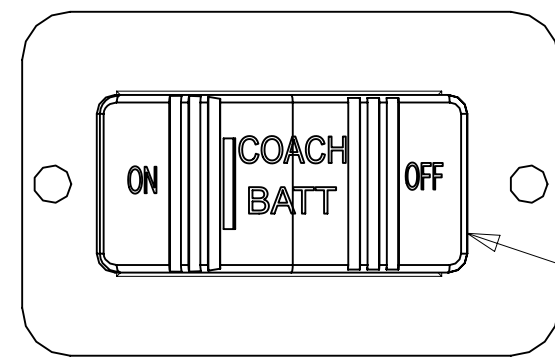


PLATE-SWITCH  
144363-02-CHT  
SCREW  
G11-06-10U (4)

SWITCH-BATTERY  
108357-18-000  
ACTUATOR-SWITCH  
108356-19-CHT  
CIRCUITS:  
LH, LJ, LG, JP, JA  
WIRE ASM-THERMISTOR  
186796-01-000



DETAIL DG 23T 23R

LABEL  
163992-02-CHT

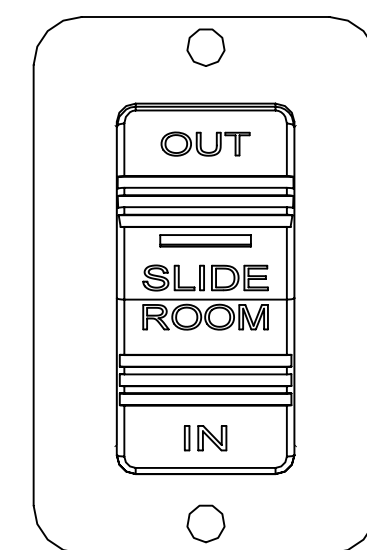


PLATE-SWITCH  
144363-02-CHT  
SWITCH  
108357-18-000  
ACTUATOR  
108356-31-CHT  
SCREW  
G11-08-08U (2)

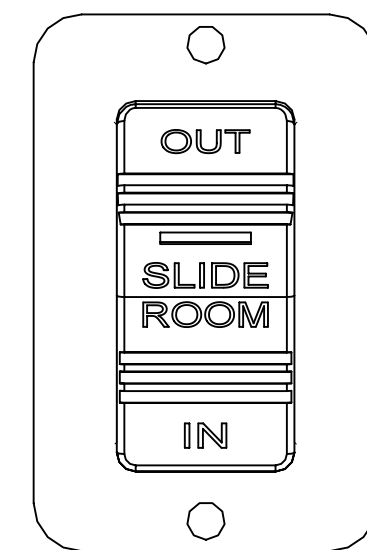
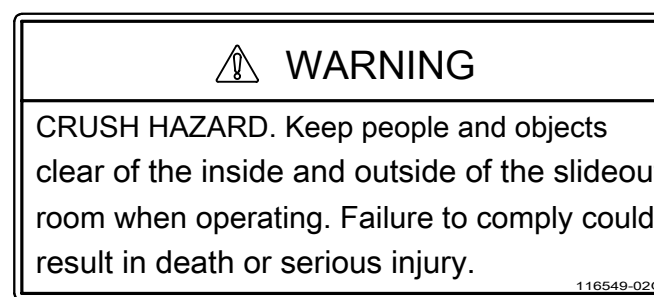
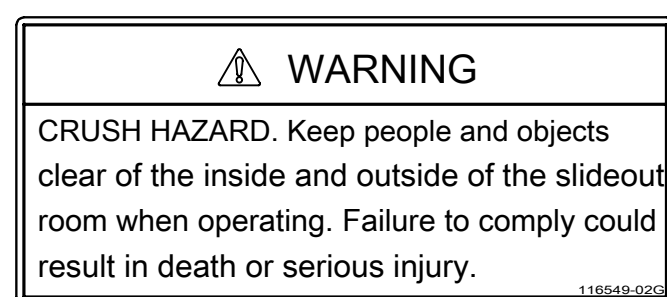


PLATE-SWITCH  
144363-02-CHT  
SWITCH  
108357-18-000  
ACTUATOR  
108356-31-CHT  
SCREW  
G11-08-08U (2)



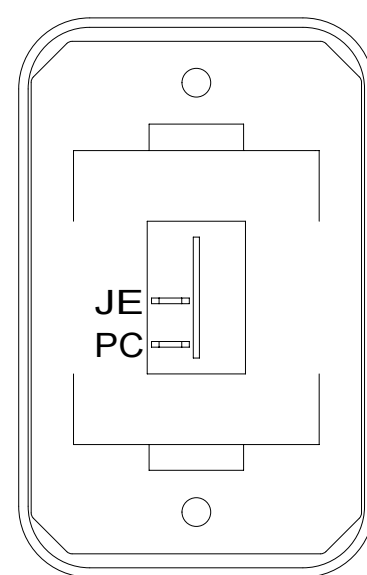
DETAIL DH

LABEL  
116549-02-000



DETAIL DF

LABEL  
116549-02-000



DETAIL DJ

SWITCH-ROCKER  
135740-01-CHT  
SWITCH-BASE  
135741-01-CHT  
SWITCH-BEZEL  
135742-01-CHT  
SCREW  
G11-08-08U (2)

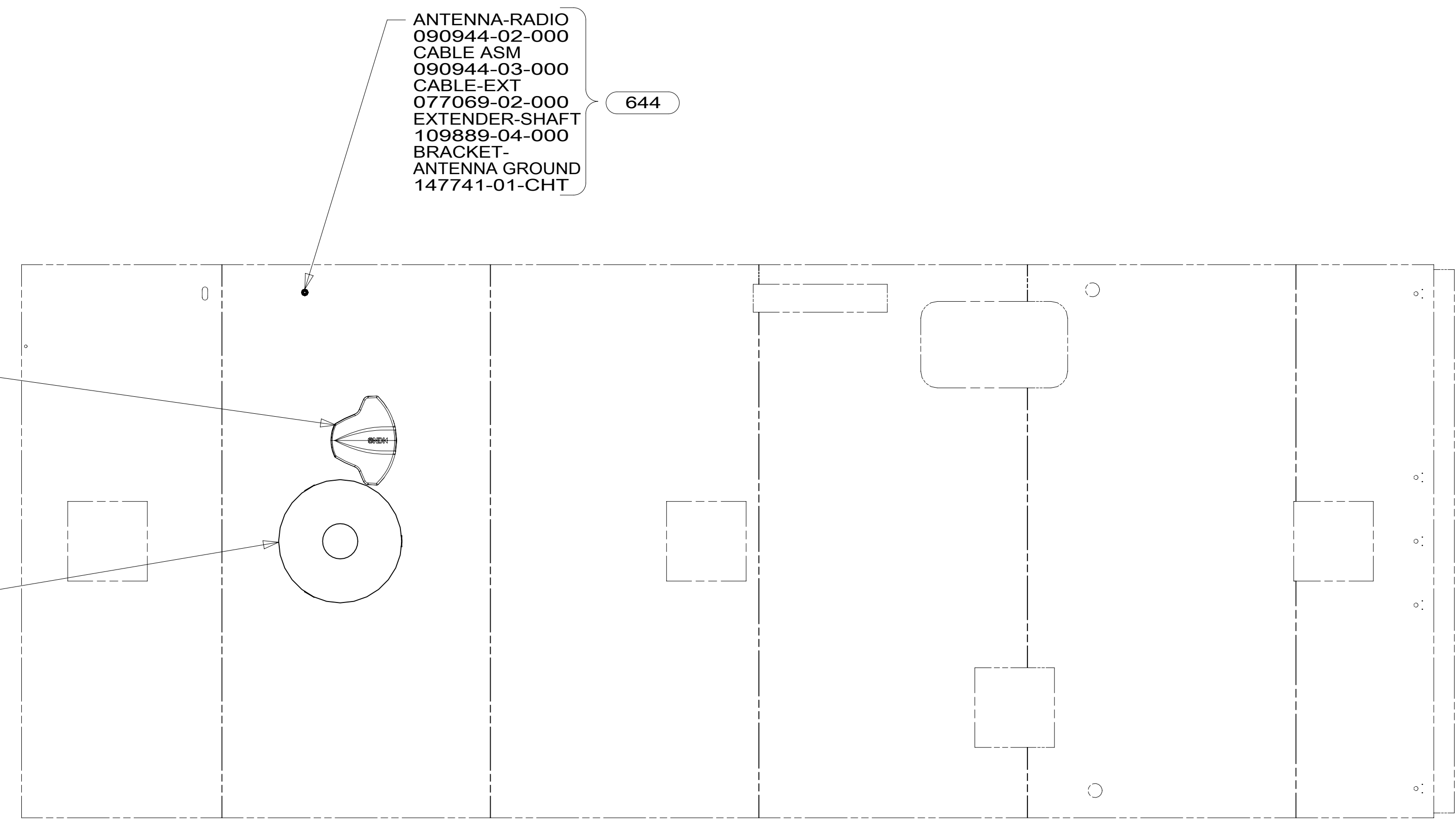
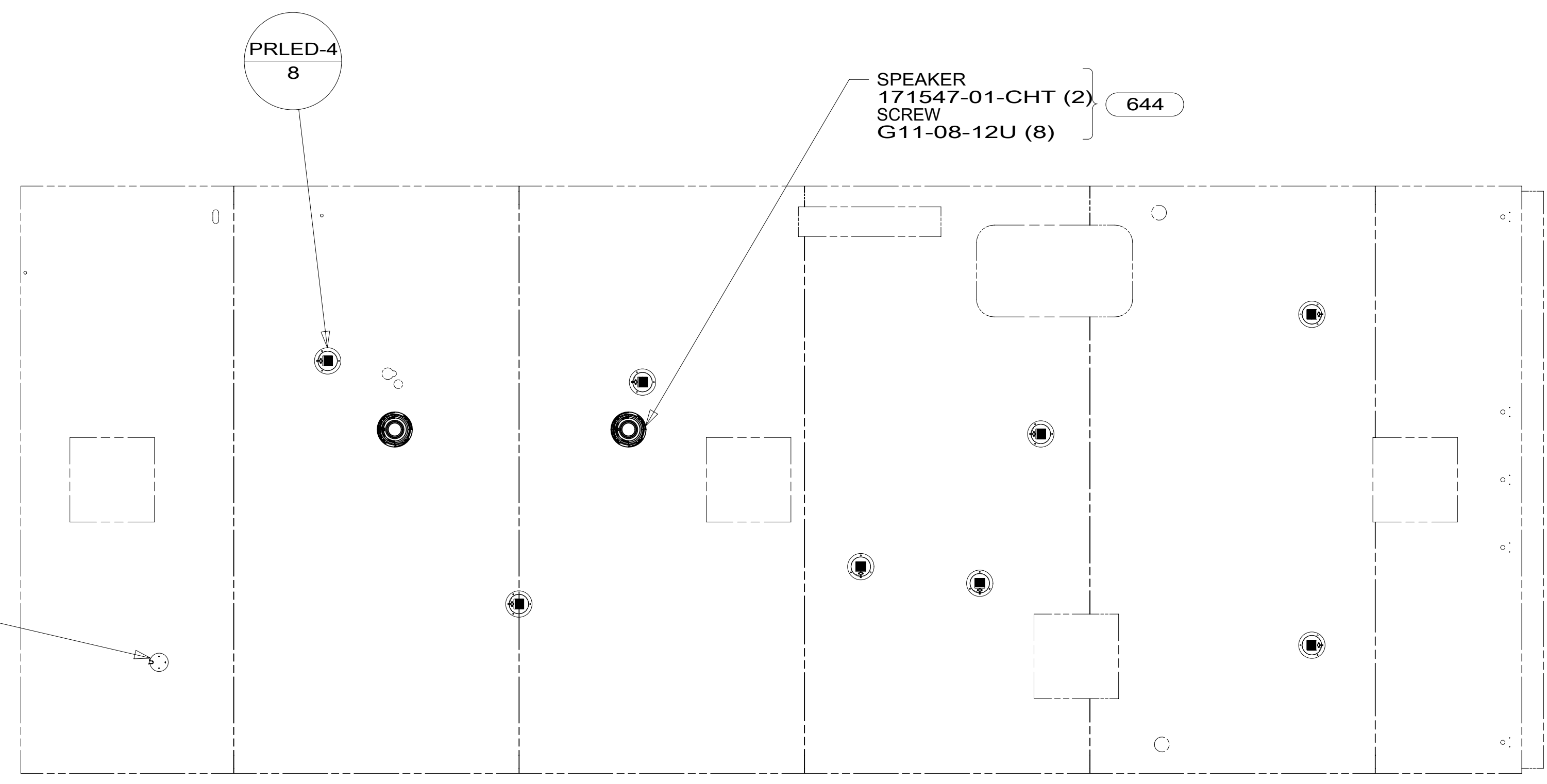
FOR ELECTRICAL  
TORQUE  
SPECIFICATIONS  
SEE DWG NO.  
128783-01-000

FOR  
ELECTRICAL  
CALLOUTS  
SEE DWG NO.  
121339-01-000

- 52F AWNING-PATIO
- 52N AWNING - PATIO, ELECTRIC
- 23R DRAINAGE SYSTEM/HEAT-PREWIRE
- 23T DRAINAGE SYSTEM-HEATED
- 644 GREAT ALASKAN RENTAL PACKAGE
- 265 CODES/STANDARDS-CSA/CMVSS
- 1B1 CODES/STANDARDS USA

1B1 265  
DESCRIPTION:  
**WIRING INSTL-BODY, 12V**

SHEET: 4 OF 6 ITEM/PART NO: 000213333 / 30169501000 REV



- 193 TV ANT-DIGITAL AMPLIFIED
- 1J8 TV ANTENNA-OMNIDIRECTIONAL
- 644 GREAT ALASKAN RENTAL PACKAGE
- 265 CODES/STANDARDS-CSA/CMVSS
- 1B1 CODES/STANDARDS USA

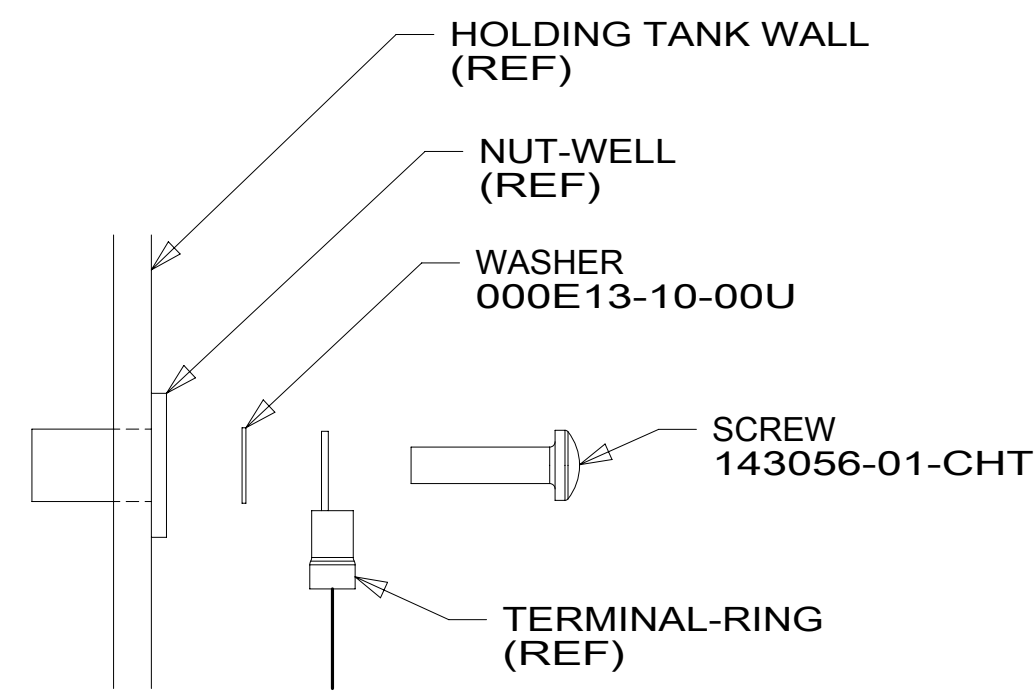
1 SEE ANTENNA INSTALLATION MANUAL FOR CORRECT INSTALLATION PROCEDURE.

FOR ELECTRICAL TORQUE SPECIFICATIONS SEE DWG NO. 128783-01-000

FOR ELECTRICAL CALLOUTS SEE DWG NO. 121339-01-000

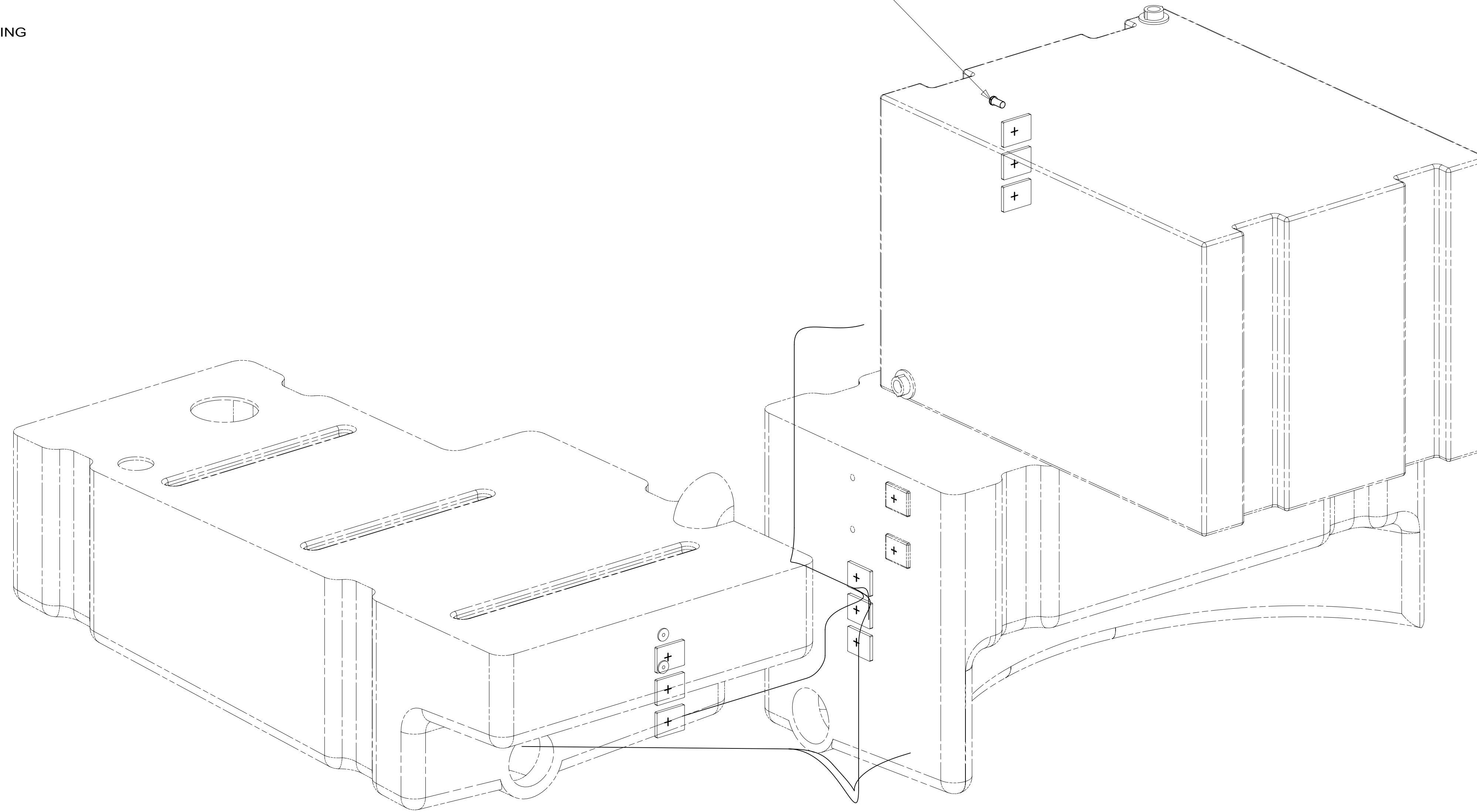
1B1	265
DESCRIPTION: <b>WIRING INSTL-BODY, 12V</b>	
SHEET: 5 OF 6	ITEM/PART NO: 000213333 / 30169501000
REV	

8 7 6 5 4 3 2 1



DETAIL FB 1

SEE DETAIL FB



VIEW FA

1 TYPICAL WIRE ATTACHMENT AT ALL LEVEL PROBES (4 EACH)  
 FOR WATER, MAIN, AND AUX HOLDING TANKS.

NOTES:

FOR ELECTRICAL TORQUE SPECIFICATIONS SEE DWG NO. 128783-01-000

FOR ELECTRICAL CALLOUTS SEE DWG NO. 121339-01-000

265 CODES/STANDARDS-CSA/CMVSS

1B1 CODES/STANDARDS USA

1B1 265

DESCRIPTION: WIRING INSTL-BODY, 12V

SHEET: 6 OF 6 ITEM/PART NO: 000213333 / 30169501000 REV

8 7 6 5 4 3 2 1 16-Jan-2017