

RED	1B1	136135-07-057
	265	136136-07-057
YEL	1B1	136131-05-070
	265	136134-05-070
BRN	1B1	136131-03-038
	265	136134-03-038
BLU	1B1	136131-02-070
	265	136134-02-070
MAIN	1B1	136137-01-084
	265	136138-01-084
BLK	1B1	136131-06-070
	265	136134-06-070
SLIDEOUT WIRE #1		136151-05-035
SLIDEOUT WIRE #2		136151-06-035
SLIDEOUT WIRE #3		136151-19-035
SLIDEOUT WIRE #4		136151-02-035
SLIDEOUT WIRE #5		136151-24-035

THROW IN WIRE #1	1B1	136131-05-015
	265	136134-05-015
THROW IN WIRE #2	1B1	136131-19-123
	265	136134-19-123
THROW IN WIRE #3	1B1	136131-03-011 401
	265	136134-03-011 401
THROW IN WIRE #4	1B1	136131-19-008 401
	265	136134-19-008 401
THROW IN WIRE #5	1B1	136131-19-060
	265	136134-19-060
THROW IN WIRE #6	1B1	136131-19-052
	265	136134-19-052
THROW IN WIRE #7	1B1	136131-02-075
	265	136134-02-075
THROW IN WIRE #8	1B1	136131-24-070
	265	136134-24-070
THROW IN WIRE #9	1B1	136131-19-016
	265	136134-19-016
THROW IN WIRE #10	1B1	136131-19-068
	265	136134-19-068

- TAILGATE PACKAGE
- EXT TV ENTERTAINMENT CENTER
- INVERTER-DC/AC, 1000 WATT
- ELECTRICAL SYSTEM 30 AMP
- CODES/STANDARDS-CSA/CMVSS
- CODES/STANDARDS USA

WINNEBAGO
COPYRIGHT 2016 WINNEBAGO INDUSTRIES, INC.

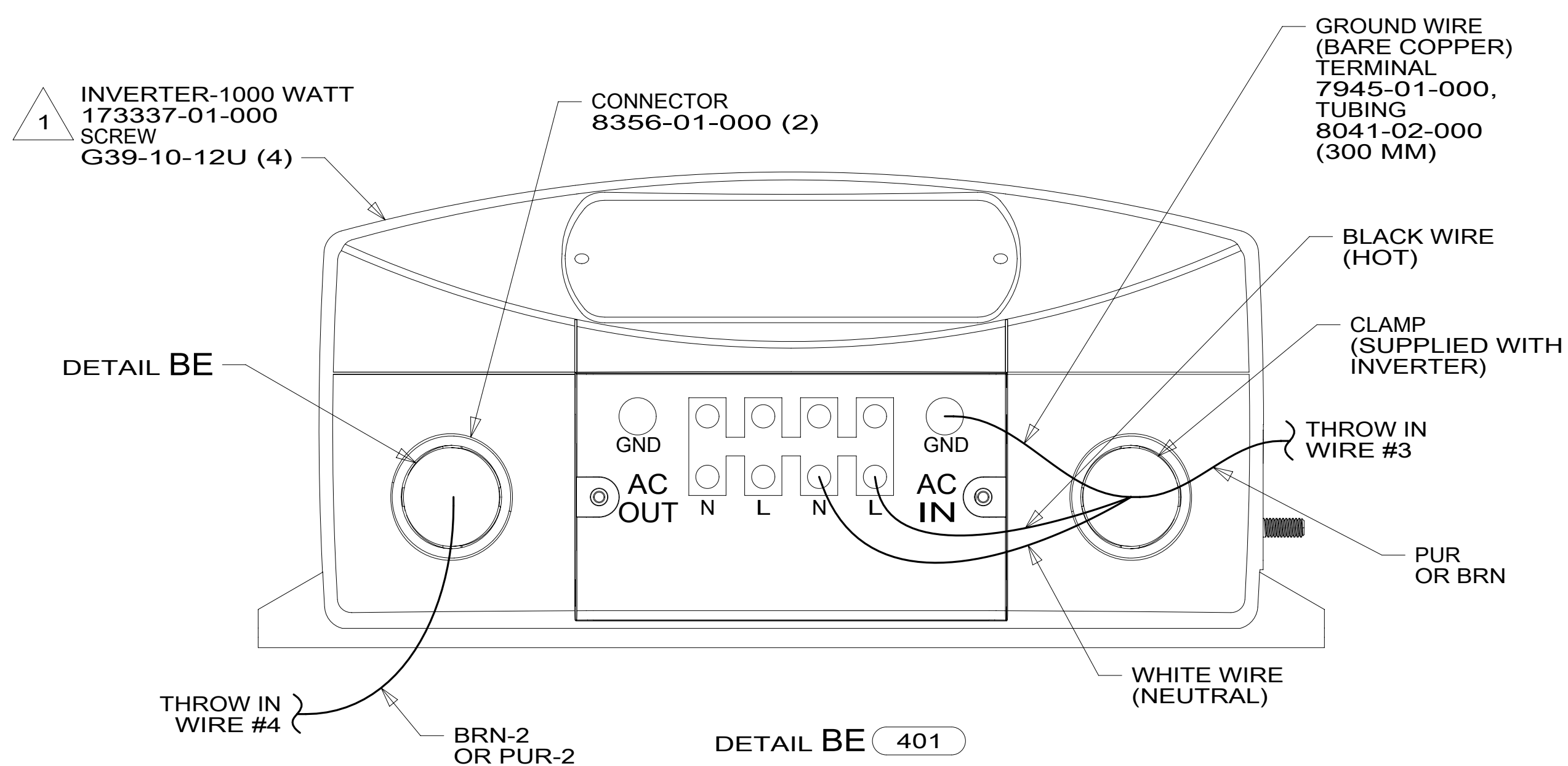
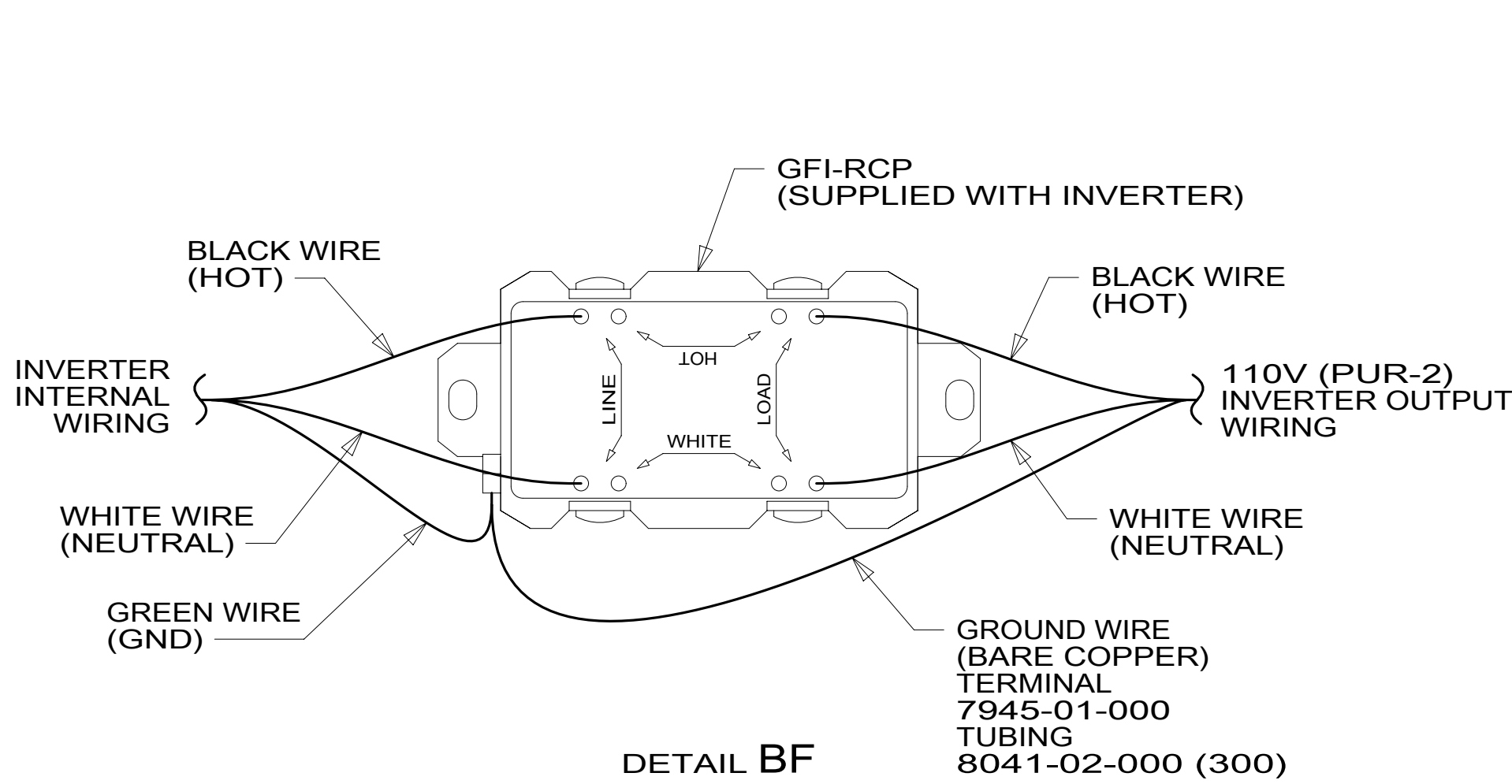
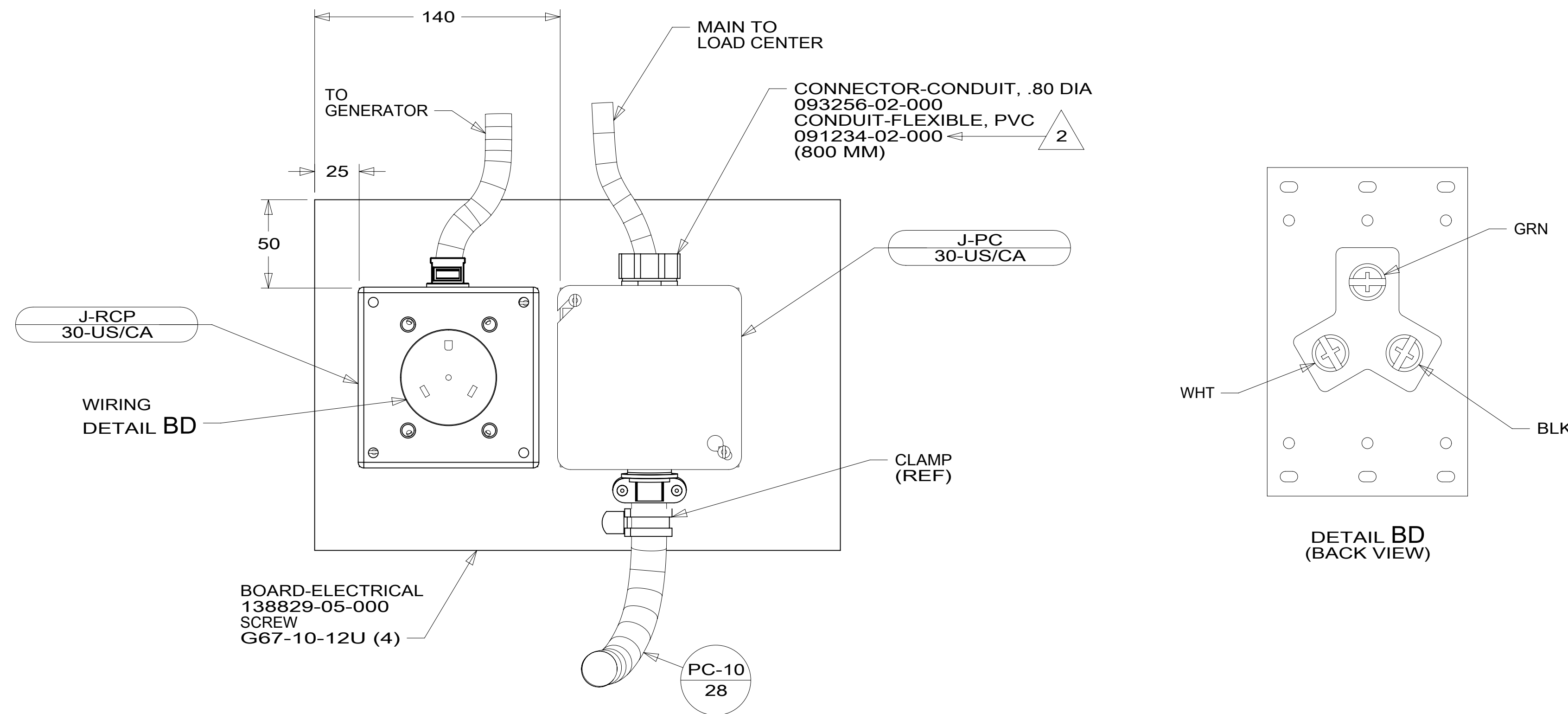
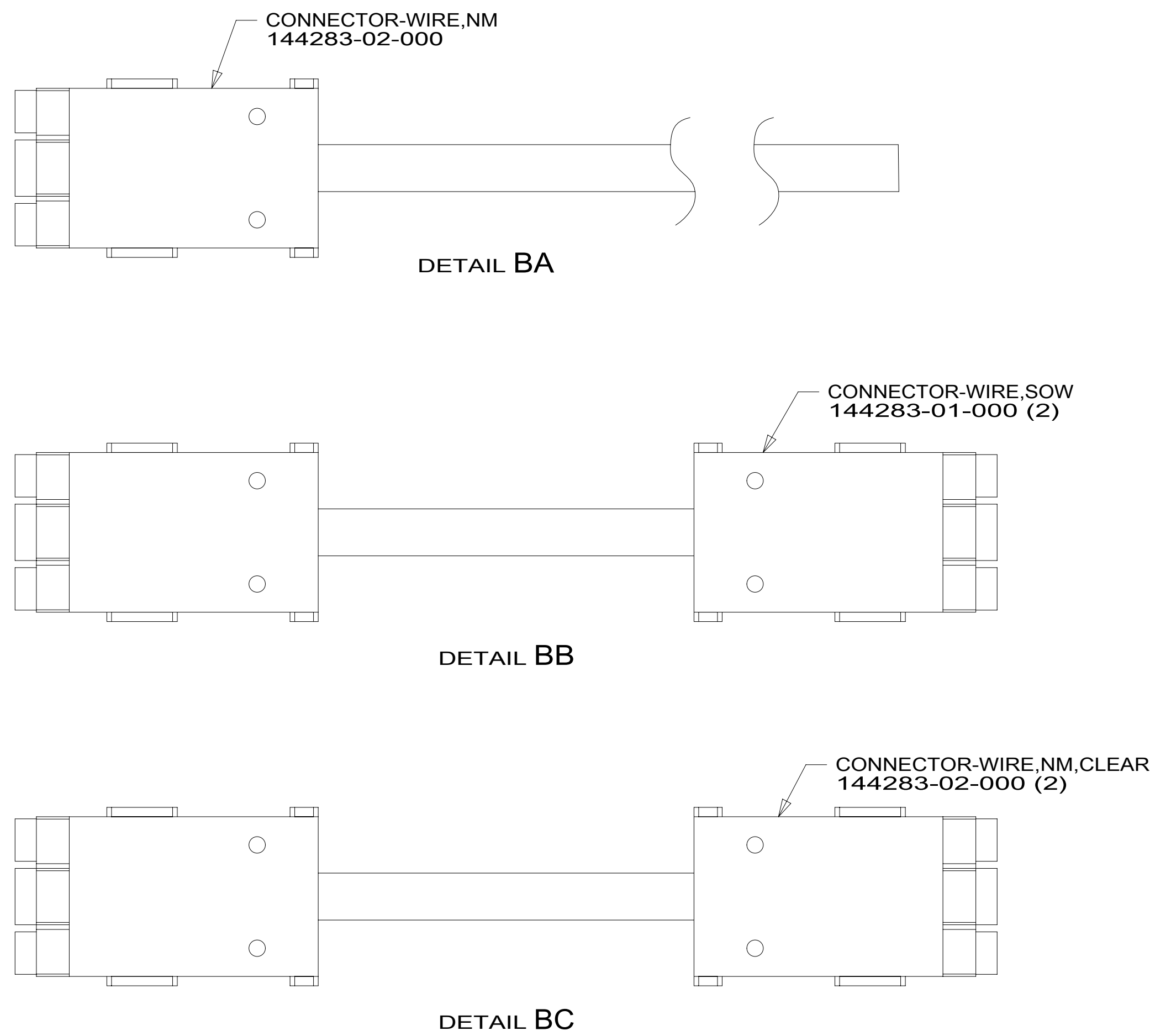
DSNR:	ALL DIMENSIONS ARE IN MILLIMETERS
DIFFR:	
UNSPECIFIED TOLERANCES:	MATERIAL:
WHOLE DIM (X) : 3	
ONE-PLACE (X.X) : 1.5	
TWO-PLACE (X.XX) : 0.50	
ANGLE : 1°	
REFER TO ES0018 FOR FASTENER TIGHTENING GUIDELINES	WEIGHT: (LBS) FIRST USED: 17 E29VE
LOAD CENTER/ATS ASM	
SHEET: 1 OF 3	ITEM/PART NO: 000212692 / 30268701000

FOR ELECTRICAL TORQUE SPECIFICATIONS SEE DWG NO. 128783-01-000

FOR ELECTRICAL CALLOUTS SEE DWG NO. 121339-01-000

- SEE DETAIL BC FOR ADDITIONAL INFORMATION.
 - SEE DETAIL BB FOR CONNECTOR INSTALLATION.
 - SEE DETAIL BA FOR CONNECTOR INSTALLATION.
1. ALL GROUNDS WIRES TO BE COVERED WITH TUBING 8041-02-000.

8 7 6 5 4 3 2 1



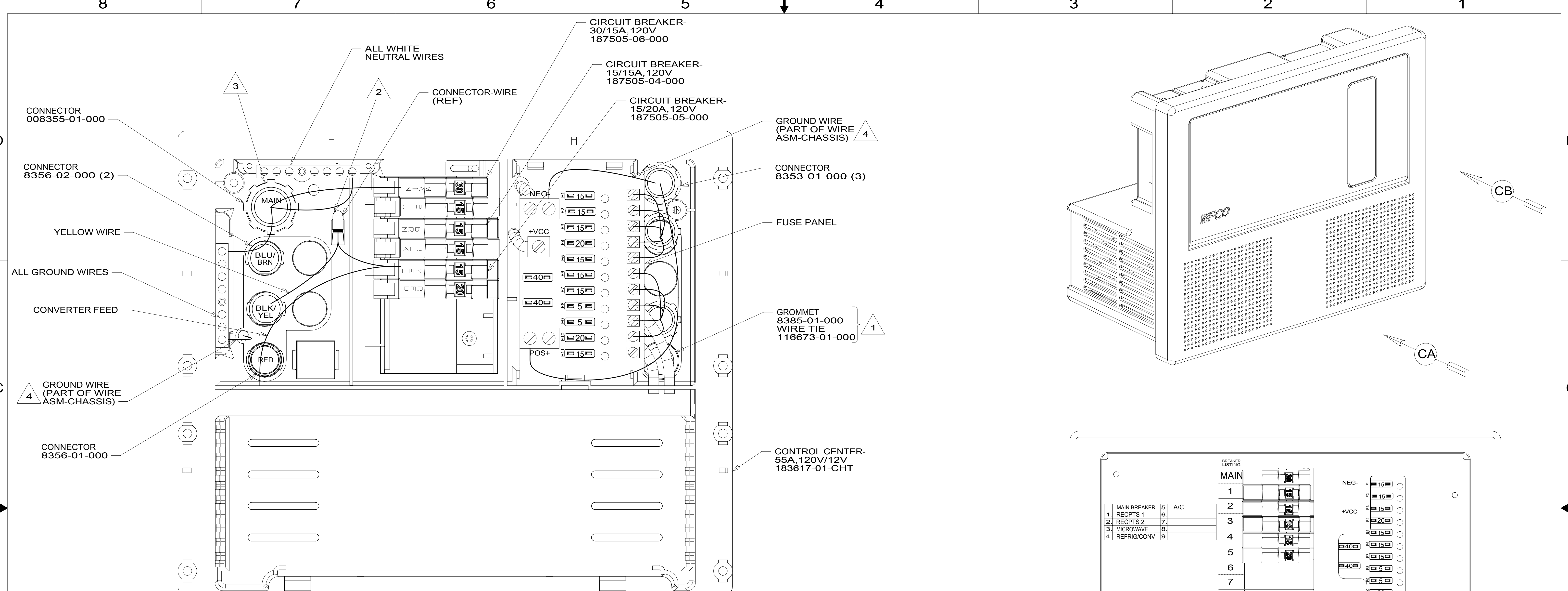
- NOTES:
- 2 SECURE CONDUIT TO MAIN CABLE ASSEMBLY WITH TAPE 8363-01-000 FOR TRANSPORTATION PURPOSES.
 - 1 INVERTER SUPPLIED WITH REMOTE PANEL SEND TO MANUFACTURING LINE.

FOR ELECTRICAL
TORQUE
SPECIFICATIONS
SEE DWG NO.
128783-01-000

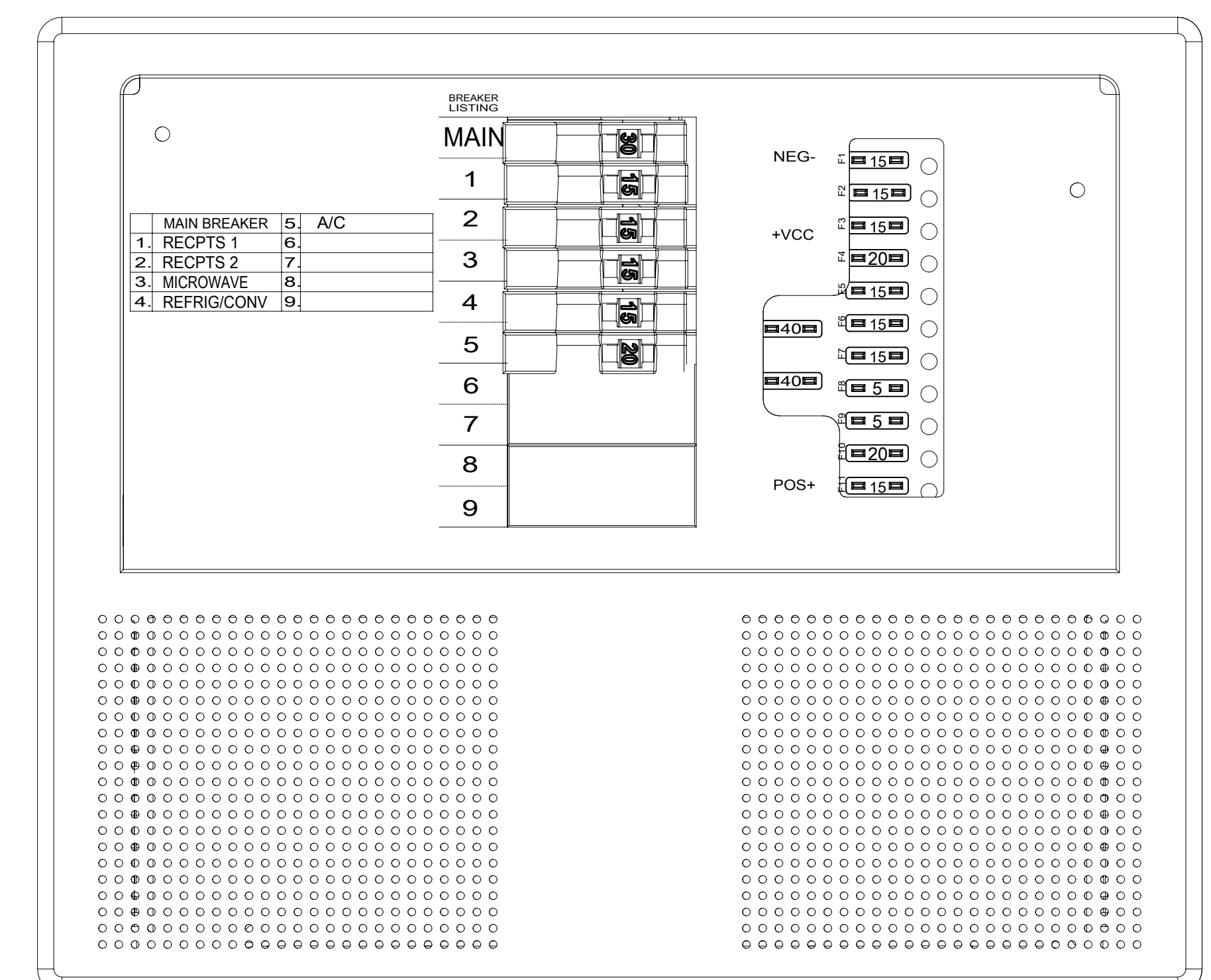
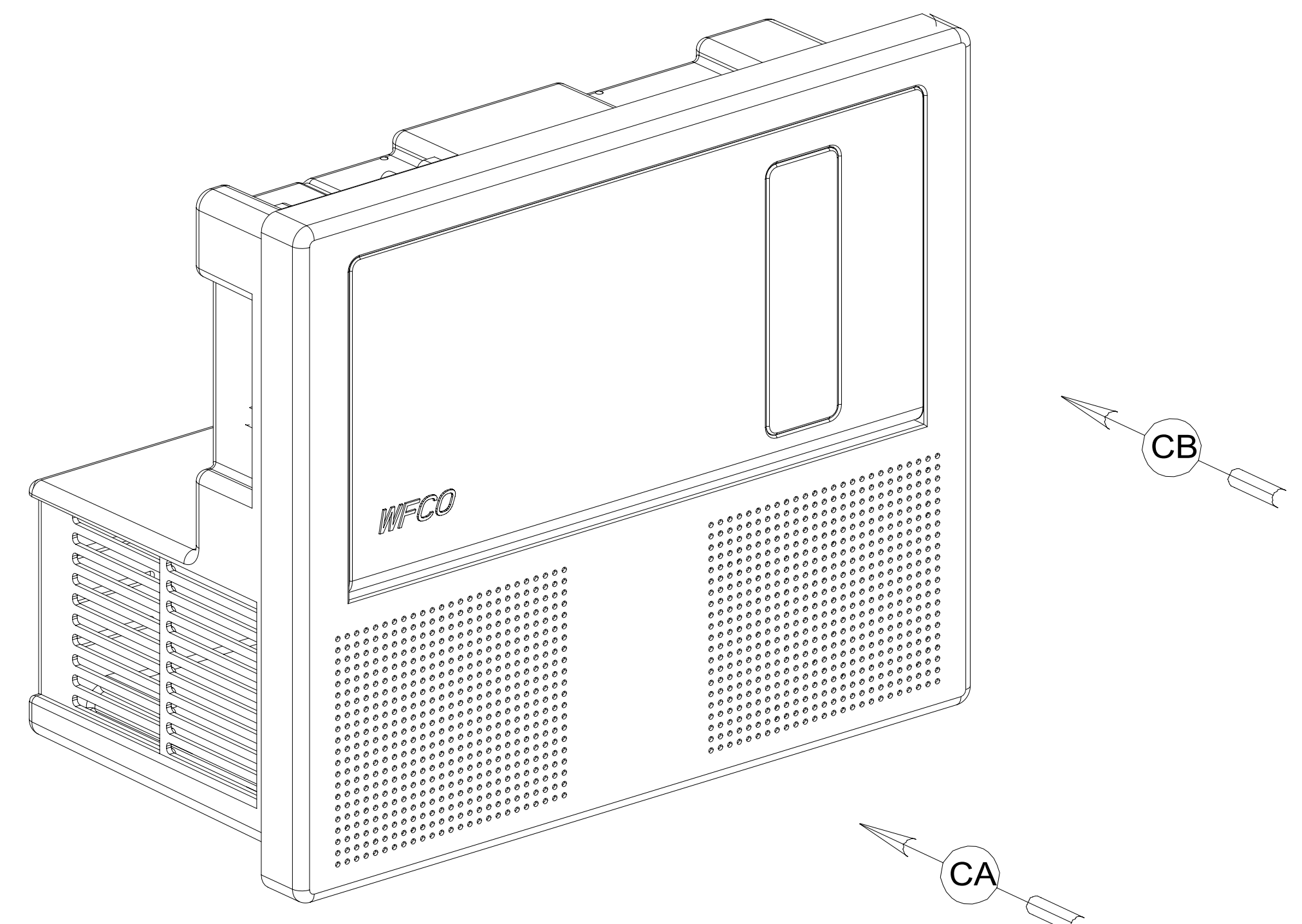
FOR ELECTRICAL
CALLOUTS
SEE DWG NO.
121339-01-000

- 401 INVERTER-DC/AC, 1000 WATT
- 265 CODES/STANDARDS-CSA/CMVSS
- 1B1 CODES/STANDARDS USA

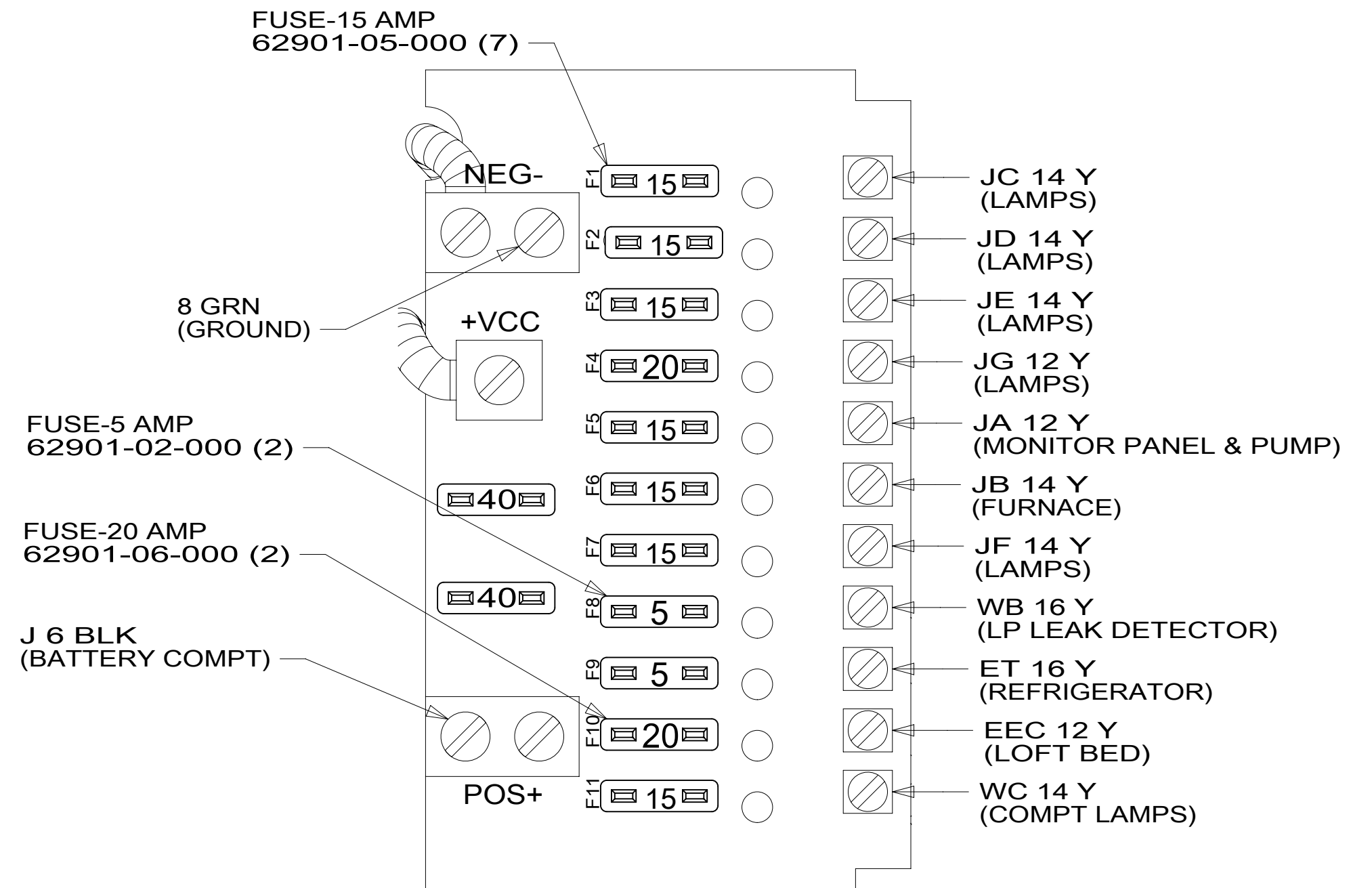
DESCRIPTION: LOAD CENTER/ATS ASM		
SHEET: 2 OF 3	ITEM/PART NO: 000212692 / 30268701000	REV



VIEW CA
(COVER REMOVED)



VIEW CB
(DOOR REMOVED)



- NOTES:
- 4 WIRE WILL BE CONNECTED IN MOTORHOME PLANT.
 - 3 TO BE CONNECTED DURING ASSEMBLY OF LOAD CENTER.
 - 2 CONNECT CONVERTER POWER CIRCUIT INTO YELLOW BREAKER USE SUPPLIED WIRE NUT TO CONNECT TO YELLOW CIRCUIT WIRE.
 - 1 INSERT GROMMET FROM THE INSIDE OF CONTROL CENTER. SECURE 110V WIRES TO BACKSIDE OF CONTROL CENTER WITH WIRE TIE.

FOR ELECTRICAL TORQUE SPECIFICATIONS SEE DWG NO. 128783-01-000

FOR ELECTRICAL CALLOUTS SEE DWG NO. 121339-01-000

265 CODES/STANDARDS-CSA/CMVSS
1B1 CODES/STANDARDS USA

DESCRIPTION:	1B1 265	
LOAD CENTER/ATS ASM		
SHEET:	ITEM/PART NO:	REV
3 OF 3	000212692 / 30268701000	