

8 7 6 5 4 3 2 1

CABINET ASM-
OVHD,DOOR
(REF)

WALL PLATE-BLANK,PLASTIC
192613-01-CHT

PLATE-WALL,POWER SUPPLY
179004-02-CHT

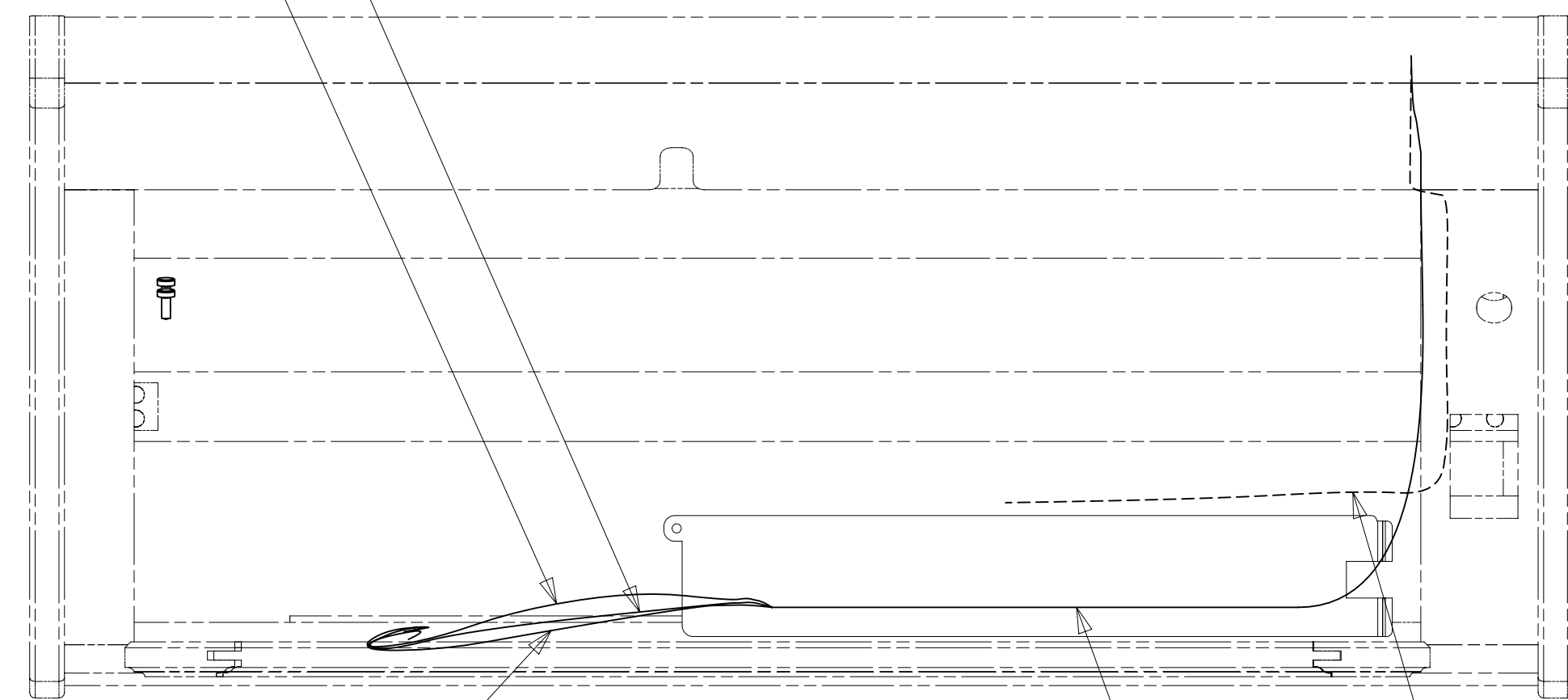
PANEL-COVER,BRACKET
194672-03-CHT
SCREW
G67-08-08U

AB

PANEL-COVER,
BRACKET
194672-01-CHT
SCREW
G67-08-08U

PANEL-COVER,
BRACKET
000122894 / 323485-01-CHT
SCREW
G67-08-08U

12V
TO ANTENNA PLATE
COAX (BLU)
TO ANTENNA PLATE



VIEW AB

COAX (RED)
TO ANTENNA PLATE

110V (BRN)
FROM ROOF
TO OUTLET

COAX AND 12V
FROM ROOF

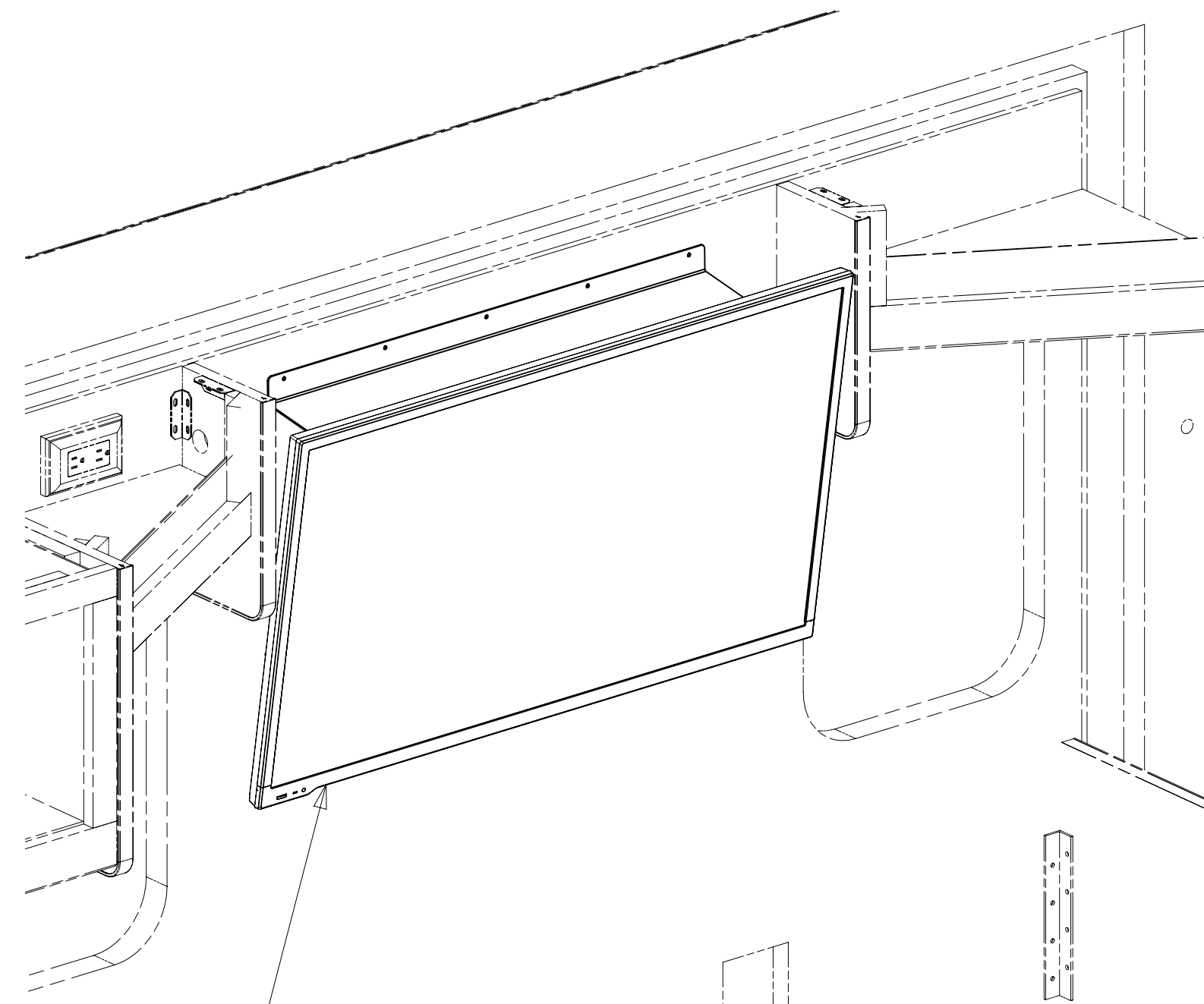
RCP-TV
(REF)

SLIDEOUT
ROOM CEILING
(REF)

BRACKET-MOUNTING,TV
175053-16-CHT
SCREW
G39-08-12U (5)

CLIP-TRIM
130034-01-CHT
SCREW
G39-08-12U (4)

VIEW AA
(TV NOT SHOWN)



AA

FOR ELECTRICAL
TORQUE
SPECIFICATIONS
SEE DWG NO.
128783-01-000

FOR
ELECTRICAL
CALLOUTS
SEE DWG NO.
121339-01-000

- NOTES:
1. 110V WIRE TO BE CLAMPED WITH CLAMP 10497-05-000 WITHIN 200MM OF OUTLET BOXES, USE SCREW G67-10-12B.
 2. ALL WIRES TO BE SECURED WITH CLAMP 10495-01-000 OR CLIP 80734-01-000 EVERY 600MM. USE SCREW G67-10-12B UNLESS OTHERWISE SPECIFIED.
 3. WHERE WIRES PASS THROUGH HOLES IN STEEL AND NOT OTHERWISE PROTECTED, USE GROMMET 92908-02-000.

TV-39".FLAT PANEL DLED, HDTV
000023379 / 314833-01-000
SCREW
OMG02U-06-010 (4)
(VESA MOUNT)
SCREW
SUPPLIED WITH TV
(LOWER MOUNT)

265 CODES/STANDARDS-CSA/CMVSS

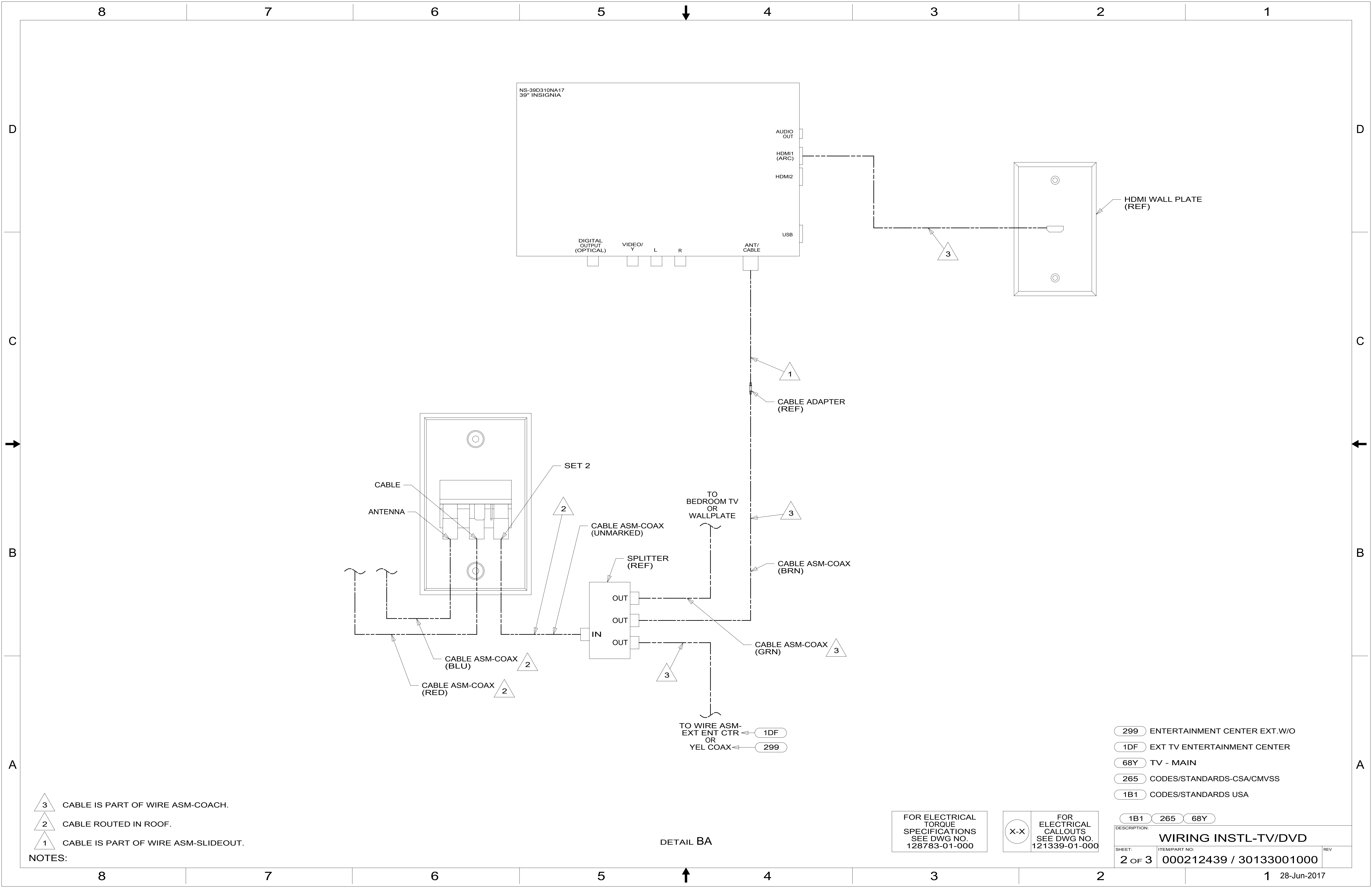
1B1 CODES/STANDARDS USA

1B1 265



DSNR:		ALL DIMENSIONS ARE IN MILLIMETERS	
DFFR:		MATERIAL:	
UNSPECIFIED TOLERANCES:			
WHOLE DIM (X)	: 3		
ONE-PLACE (X.X)	: 1.5		
TWO-PLACE (X.XX)	: 0.50		
ANGLE	: 1°		
REFER TO ES0018 FOR FASTENER TIGHTENING GUIDELINES		WEIGHT: (LBS)	FIRST USED:
			17 E31BE
DESCRIPTION: WIRING INSTL-TV/DVD			
SHEET:	ITEM/PART NO.:	REV:	
1 OF 3	000212439 / 30133001000		
REF:		1 28-Jun-2017	

8 7 6 5 4 3 2 1



- NOTES:
- 3 CABLE IS PART OF WIRE ASM-COACH.
 - 2 CABLE ROUTED IN ROOF.
 - 1 CABLE IS PART OF WIRE ASM-SLIDEOUT.

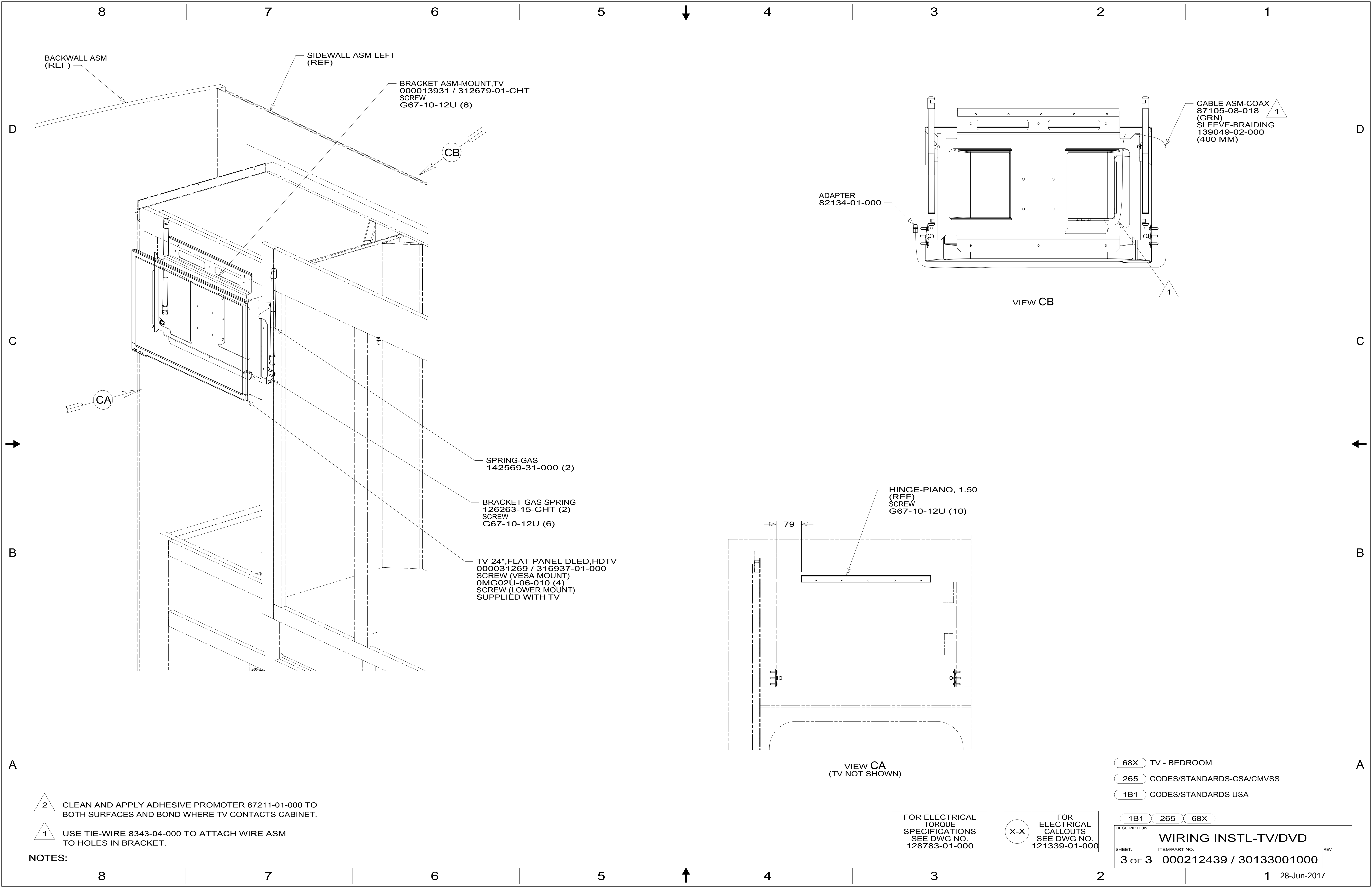
DETAIL BA

FOR ELECTRICAL TORQUE SPECIFICATIONS SEE DWG NO. 128783-01-000

FOR ELECTRICAL CALLOUTS SEE DWG NO. 121339-01-000

- 299 ENTERTAINMENT CENTER EXT.W/O
- 1DF EXT TV ENTERTAINMENT CENTER
- 68Y TV - MAIN
- 265 CODES/STANDARDS-CSA/CMVSS
- 1B1 CODES/STANDARDS USA

DESCRIPTION:		
WIRING INSTL-TV/DVD		
SHEET:	ITEM/PART NO.:	REV
2 OF 3	000212439 / 30133001000	



BACKWALL ASM (REF)
 SIDEWALL ASM-LEFT (REF)
 BRACKET ASM-MOUNT-TV
 000013931 / 312679-01-CHT
 SCREW
 G67-10-12U (6)

CB

CA

SPRING-GAS
 142569-31-000 (2)

BRACKET-GAS SPRING
 126263-15-CHT (2)
 SCREW
 G67-10-12U (6)

TV-24", FLAT PANEL DLED, HDTV
 000031269 / 316937-01-000
 SCREW (VESA MOUNT)
 OMG02U-06-010 (4)
 SCREW (LOWER MOUNT)
 SUPPLIED WITH TV

ADAPTER
 82134-01-000

CABLE ASM-COAX
 87105-08-018
 (GRN)
 SLEEVE-BRAIDING
 139049-02-000
 (400 MM)

VIEW CB

HINGE-PIANO, 1.50
 (REF)
 SCREW
 G67-10-12U (10)

79

VIEW CA
 (TV NOT SHOWN)

2 CLEAN AND APPLY ADHESIVE PROMOTER 87211-01-000 TO BOTH SURFACES AND BOND WHERE TV CONTACTS CABINET.

1 USE TIE-WIRE 8343-04-000 TO ATTACH WIRE ASM TO HOLES IN BRACKET.

NOTES:

FOR ELECTRICAL TORQUE SPECIFICATIONS SEE DWG NO. 128783-01-000

FOR ELECTRICAL CALLOUTS SEE DWG NO. 121339-01-000

- 68X TV - BEDROOM
- 265 CODES/STANDARDS-CSA/CMVSS
- 1B1 CODES/STANDARDS USA

1B1 265 68X

DESCRIPTION: WIRING INSTL-TV/DVD		
SHEET: 3 OF 3	ITEM/PART NO: 000212439 / 30133001000	REV