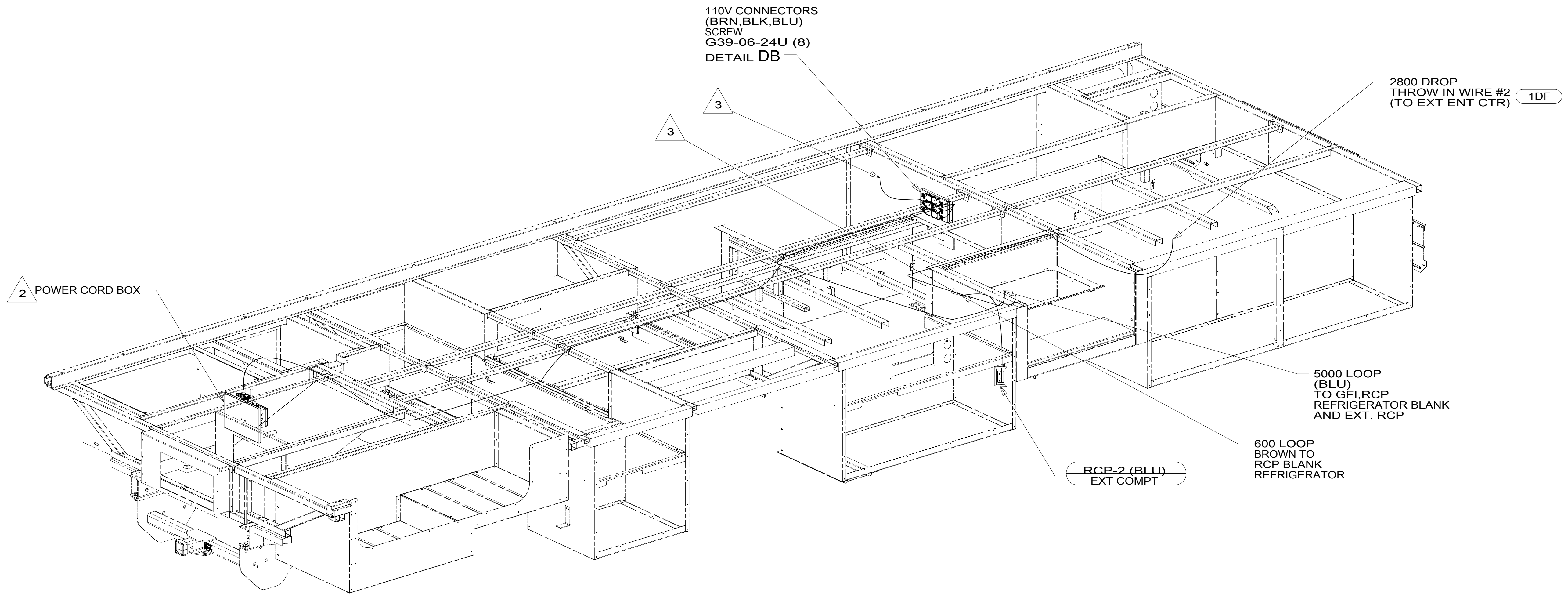


8 7 6 5 4 3 2 1

D
C
B
A



- 1DF EXT TV ENTERTAINMENT CENTER
- 12D ELECTRICAL SYSTEM 30 AMP
- 265 CODES/STANDARDS-CSA/CMVSS
- 1B1 CODES/STANDARDS USA

1B1 265



DSNR:		ALL DIMENSIONS ARE IN MILLIMETERS	
DFFR:		MATERIAL:	
UNSPECIFIED TOLERANCES:			
WHOLE DIM (X)	: 3		
ONE-PLACE (X.X)	: 1.5		
TWO-PLACE (X.XX)	: 0.50		
ANGLE	: 1°		
REFER TO ES0018 FOR FASTENER TIGHTENING GUIDELINES		WEIGHT: (LBS)	FIRST USED:
			17 E31BE

WIRING INSTL-BODY, 110V

SHEET:	ITEM/PART NO.:	REV:
1 OF 5	000212436 / 30126601000	

REF: 1 02-Jun-2017

- NOTES:
4. AT MINIMUM ALL WIRES TO BE SUPPORTED AND SECURED PER CODE REQUIREMENTS. USE CLAMP 10495 OR 10497 OR WIRE TIE 8343 OR 108046 AND SCREW G67-XX-XXX OR G56-XX-XXX AS APPROPRIATE FOR INSTALLATION.
 - 3 WIRE ROUTED THROUGH FLOOR IN THIS AREA.
 - 2 SEE LOAD CENTER/ATS FOR ADDITIONAL INFORMATION.
 1. WIRES ROUTED UNDER FLOOR.

FOR ELECTRICAL TORQUE SPECIFICATIONS SEE DWG NO. 128783-01-000

FOR ELECTRICAL CALLOUTS SEE DWG NO. 121339-01-000

8 7 6 5 4 3 2 1

WIRE ASM-SOLAR EXT
195056-01-000
CLAMP
10495-02-000 (3)

1 RCP-2 (BRN)
DINETTE
SPACER-RCP
133713-04-CHT
SCREW
G11-08-20U (4)

1 SP-06 RCP-2 (BRN)
TV

1 SP-06 RCP-2 (BLU)
GALLEY WALL

RCP-1 (BLK)
MICROWAVE

1 SP-06 RCP-2 (BLU)
GALLEY WALL

1 RCP-2 (BRN)
BDRM TV

1 SP-06 RCP-2 (BRN)
BDRM LEFT

RCP-B (BRN)
GALLEY

110V CONNECTIONS
DETAIL DA

THROW IN WIRE #5

3. AT MINIMUM ALL WIRES TO BE SUPPORTED AND SECURED PER CODE REQUIREMENTS. USE CLAMP 10495 OR 10497 OR WIRE TIE 8343 OR 108046 AND SCREW G67-XX-XXX OR G56-XX-XXX AS APPROPRIATE FOR INSTALLATION.

2 WIRE ROUTED THRU FLOOR IN THIS AREA.
1 WIRE ROUTED IN SIDEWALL.

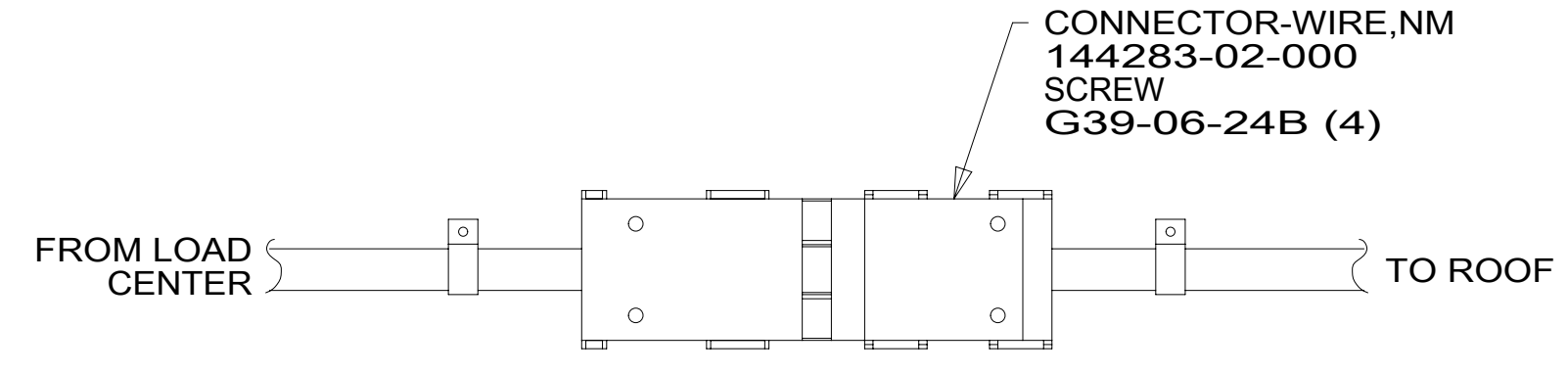
NOTES:

265 CODES/STANDARDS-CSA/CMVSS
1B1 CODES/STANDARDS USA

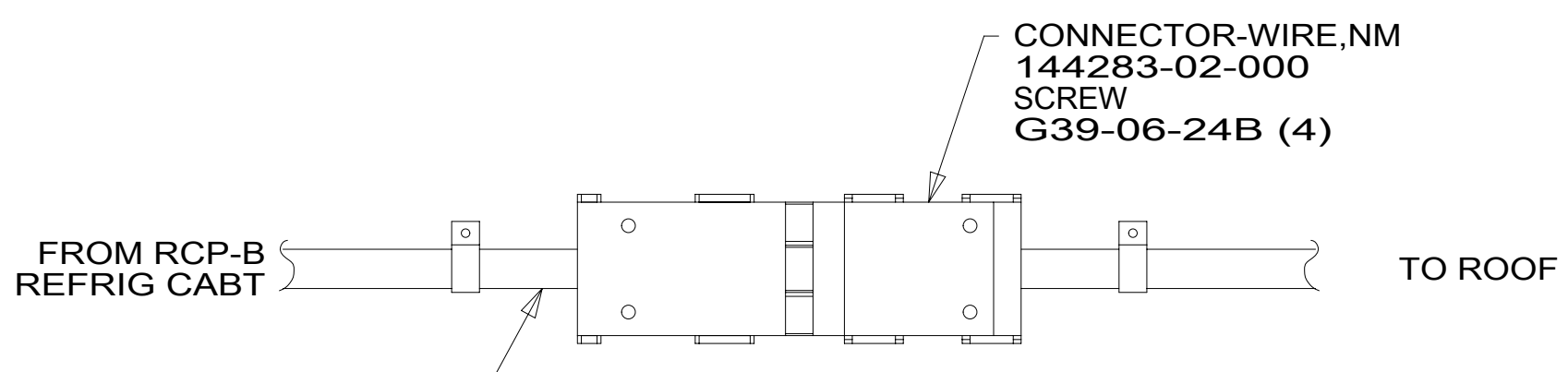
FOR ELECTRICAL TORQUE SPECIFICATIONS SEE DWG NO. 128783-01-000

FOR ELECTRICAL CALLOUTS SEE DWG NO. 121339-01-000

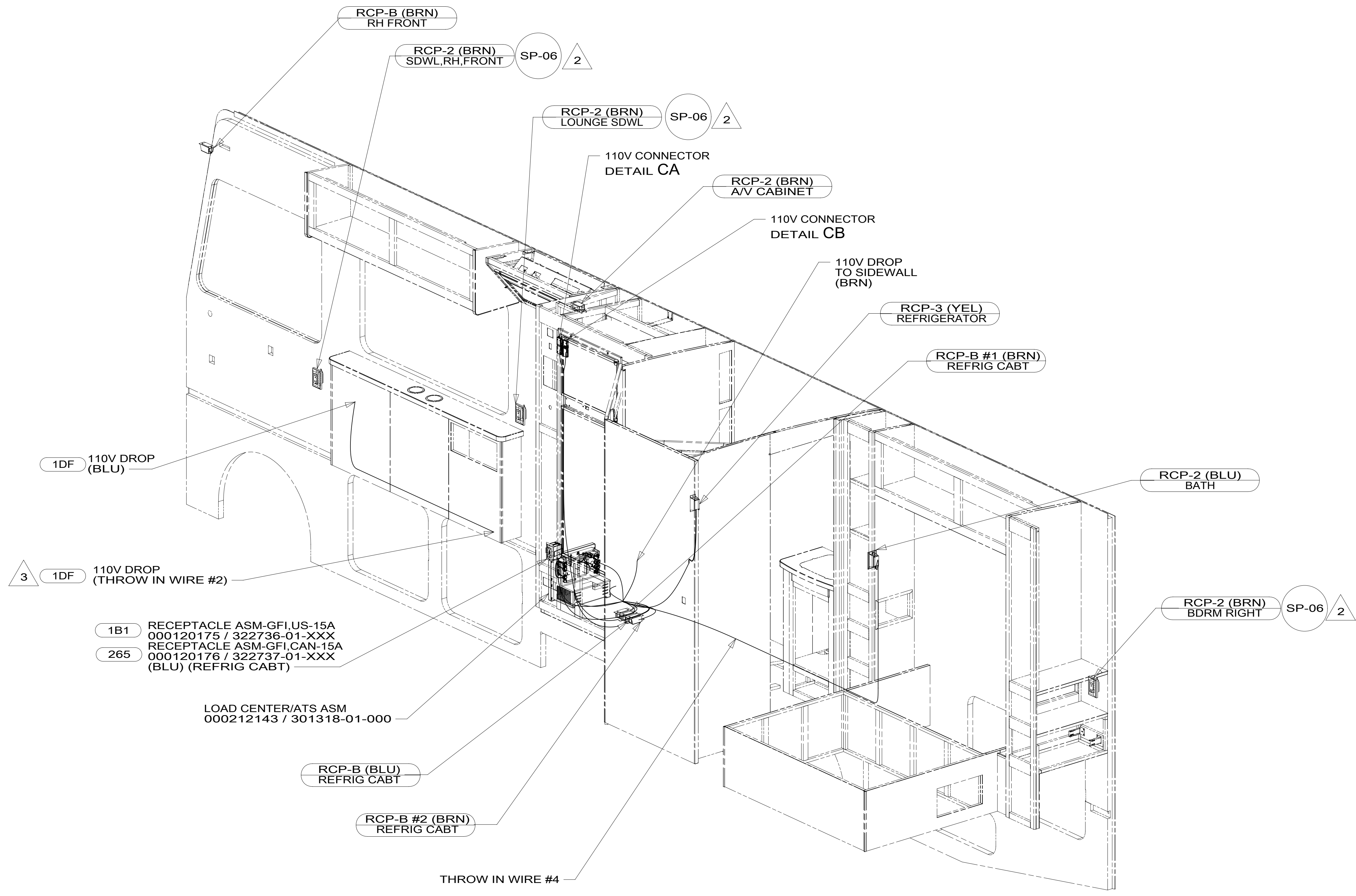
DESCRIPTION:	
1B1 265	
WIRING INSTL-BODY, 110V	
SHEET:	ITEM/PART NO. REV
2 OF 5	000212436 / 30126601000



DETAIL CA
(RED)



DETAIL CB
(BRN)



- 1B1 RECEPTACLE ASM-GFI,US-15A
000120175 / 322736-01-XXX
- 265 RECEPTACLE ASM-GFI,CAN-15A
000120176 / 322737-01-XXX (BLU) (REFRIG CABT)

LOAD CENTER/ATS ASM
000212143 / 301318-01-000

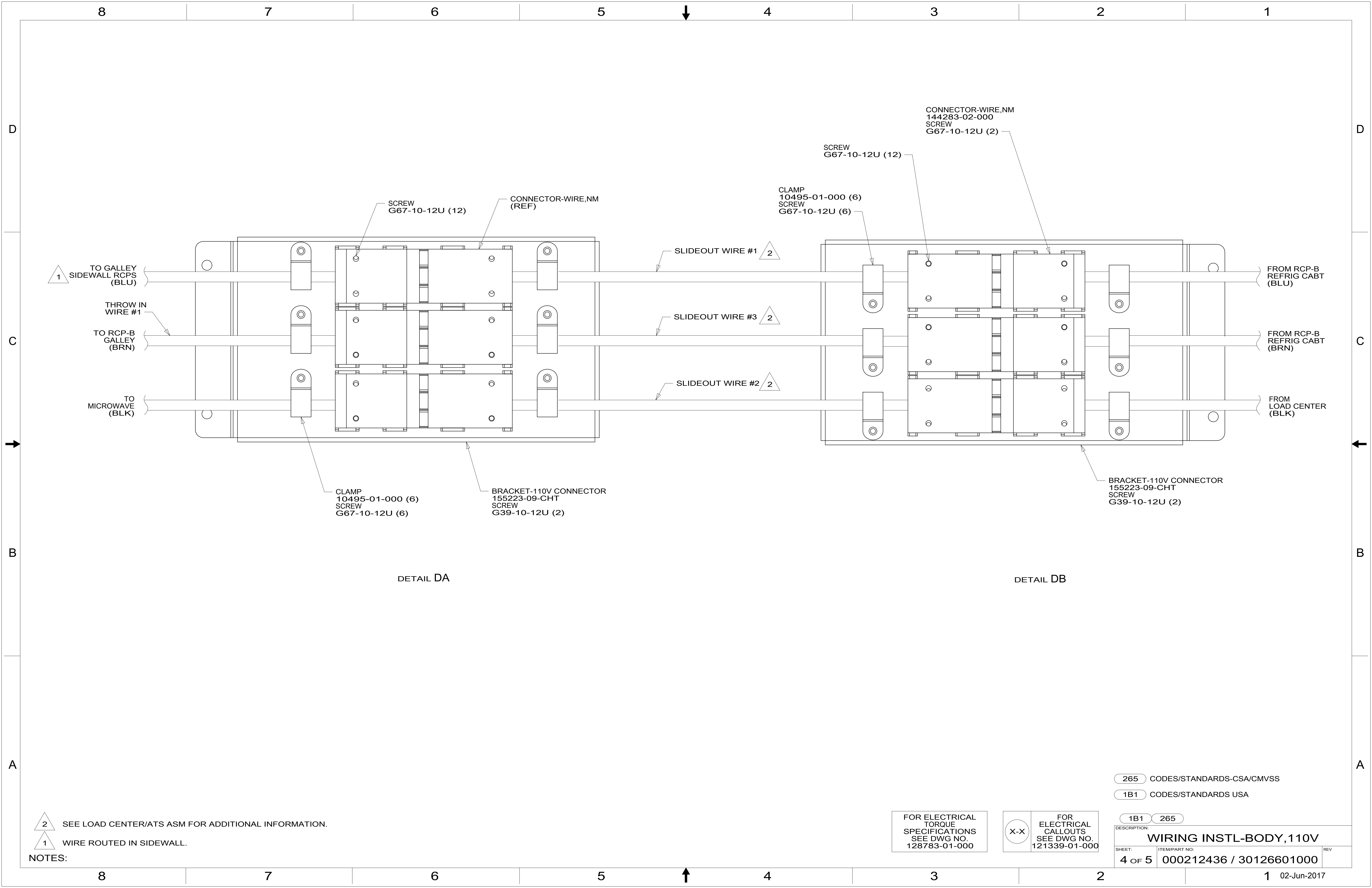
- NOTES:
- 3 ROUTE WIRE UNDER FLOOR TO THE RCP BLANK BY THE LOAD CENTER.
 - 2 WIRE ROUTED IN SIDEWALL.
 - 1. AT MINIMUM ALL WIRES TO BE SUPPORTED AND SECURED PER CODE REQUIREMENTS. USE CLAMP 10495 OR 10497 OR WIRE TIE 8343 OR 108046 AND SCREW G67-XX-XXX OR G56-XX-XXX AS APPROPRIATE FOR INSTALLATION.

- 1DF EXT TV ENTERTAINMENT CENTER
- 265 CODES/STANDARDS-CSA/CMVSS
- 1B1 CODES/STANDARDS USA

FOR ELECTRICAL TORQUE SPECIFICATIONS SEE DWG NO. 128783-01-000

FOR ELECTRICAL CALLOUTS SEE DWG NO. 121339-01-000

DESCRIPTION:	
WIRING INSTL-BODY, 110V	
SHEET:	ITEM/PART NO. REV
3 OF 5	000212436 / 30126601000



1 TO GALLEY SIDEWALL RCPS (BLU)

THROW IN WIRE #1

TO RCP-B GALLEY (BRN)

TO MICROWAVE (BLK)

FROM RCP-B REFRIG CABT (BLU)

FROM RCP-B REFRIG CABT (BRN)

FROM LOAD CENTER (BLK)

SCREW G67-10-12U (12)

CONNECTOR-WIRE,NM (REF)

CLAMP 10495-01-000 (6)

SCREW G67-10-12U (6)

CONNECTOR-WIRE,NM 144283-02-000

SCREW G67-10-12U (2)

SLIDEOUT WIRE #1 2

SLIDEOUT WIRE #3 2

SLIDEOUT WIRE #2 2

CLAMP 10495-01-000 (6)

SCREW G67-10-12U (6)

BRACKET-110V CONNECTOR 155223-09-CHT

SCREW G39-10-12U (2)

BRACKET-110V CONNECTOR 155223-09-CHT

SCREW G39-10-12U (2)

DETAIL DA

DETAIL DB

2 SEE LOAD CENTER/ATS ASM FOR ADDITIONAL INFORMATION.

1 WIRE ROUTED IN SIDEWALL.

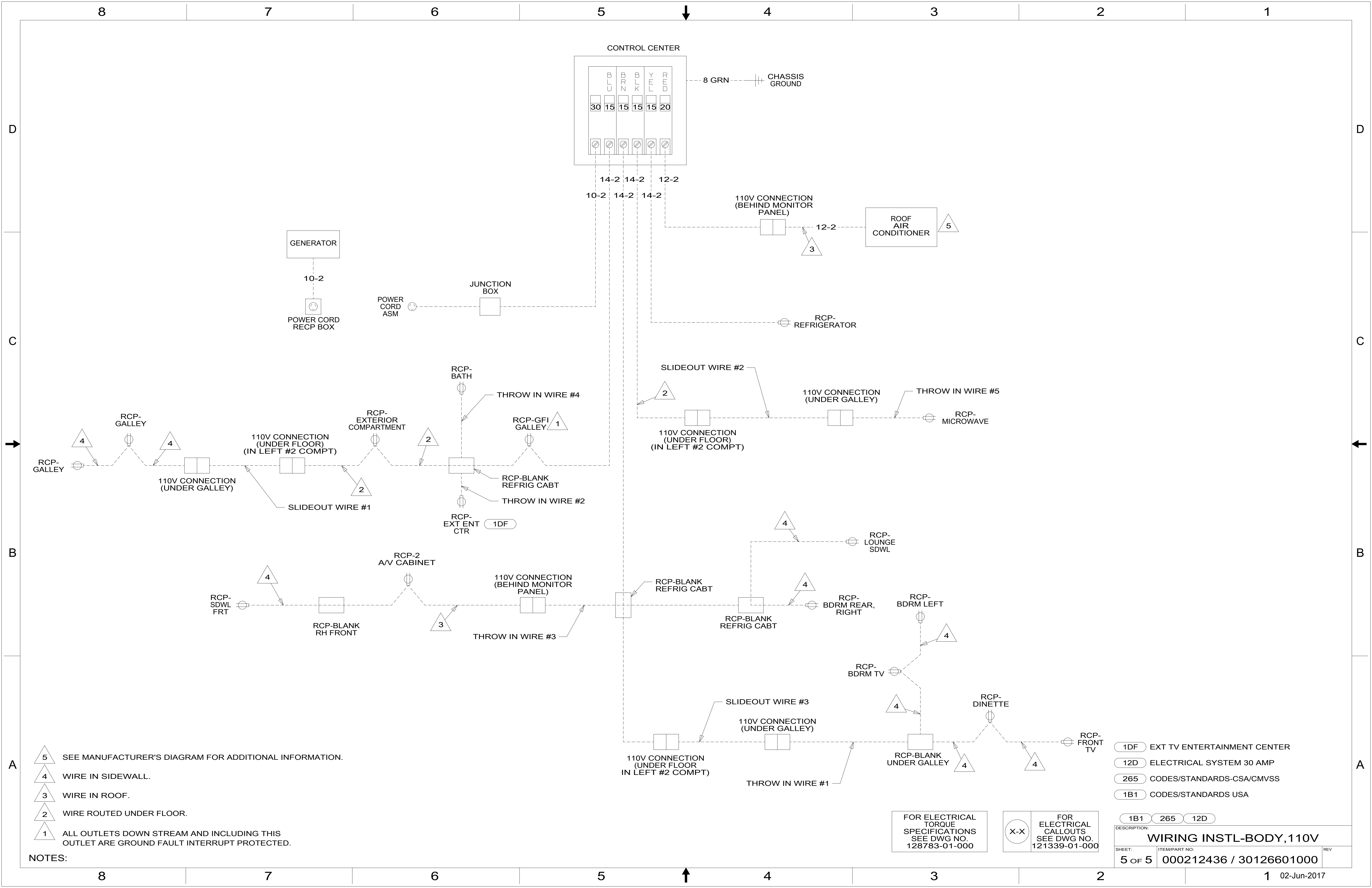
FOR ELECTRICAL TORQUE SPECIFICATIONS SEE DWG NO. 128783-01-000

FOR ELECTRICAL CALLOUTS SEE DWG NO. 121339-01-000

265 CODES/STANDARDS-CSA/CMVSS

1B1 CODES/STANDARDS USA

DESCRIPTION:	
WIRING INSTL-BODY, 110V	
SHEET:	ITEM/PART NO. REV
4 OF 5	000212436 / 30126601000



- NOTES:**
- 5 SEE MANUFACTURER'S DIAGRAM FOR ADDITIONAL INFORMATION.
 - 4 WIRE IN SIDEWALL.
 - 3 WIRE IN ROOF.
 - 2 WIRE ROUTED UNDER FLOOR.
 - 1 ALL OUTLETS DOWN STREAM AND INCLUDING THIS OUTLET ARE GROUND FAULT INTERRUPT PROTECTED.

FOR ELECTRICAL TORQUE SPECIFICATIONS SEE DWG NO. 128783-01-000

FOR ELECTRICAL CALLOUTS SEE DWG NO. 121339-01-000

- 1DF EXT TV ENTERTAINMENT CENTER
- 12D ELECTRICAL SYSTEM 30 AMP
- 265 CODES/STANDARDS-CSA/CMVSS
- 1B1 CODES/STANDARDS USA

DESCRIPTION: WIRING INSTL-BODY, 110V		
SHEET: 5 OF 5	ITEM/PART NO.: 000212436 / 30126601000	REV