

8 7 6 5 4 3 2 1

D
C
B
A

D
C
B
A

RED	1B1	136135-07-027	2
	265	136136-07-027	2
YEL	1B1	136131-05-020	
	265	136134-05-020	
BRN	1B1	136131-03-052	2
	265	136134-03-052	2
BLU	1B1	136131-02-070	2
	265	136134-02-070	2
MAIN	1B1	136137-01-075	
	265	136138-01-075	
BLK	1B1	136131-06-042	2
	265	136134-06-042	2
SLIDEOUT WIRE #1		136151-02-025	3
SLIDEOUT WIRE #2		136151-06-025	3
SLIDEOUT WIRE #3		136151-03-025	3
GROUND MAIN		178545-01-025	

THROW IN WIRE #1	1B1	136131-03-006	2
	265	136134-03-006	2
THROW IN WIRE #2	1B1	136131-02-062	1DF
	265	136134-02-062	1DF
THROW IN WIRE #3	1B1	136131-03-027	2
	265	136134-03-027	2
THROW IN WIRE #4	1B1	136131-02-042	
	265	136134-02-042	
THROW IN WIRE #5	1B1	136137-06-038	2
	265	136138-06-038	2

- 1DF EXT TV ENTERTAINMENT CENTER
- 12D ELECTRICAL SYSTEM 30 AMP
- 265 CODES/STANDARDS-CSA/CMVSS
- 1B1 CODES/STANDARDS USA

WINNEBAGO[®]
COPYRIGHT 2016 WINNEBAGO INDUSTRIES, INC.

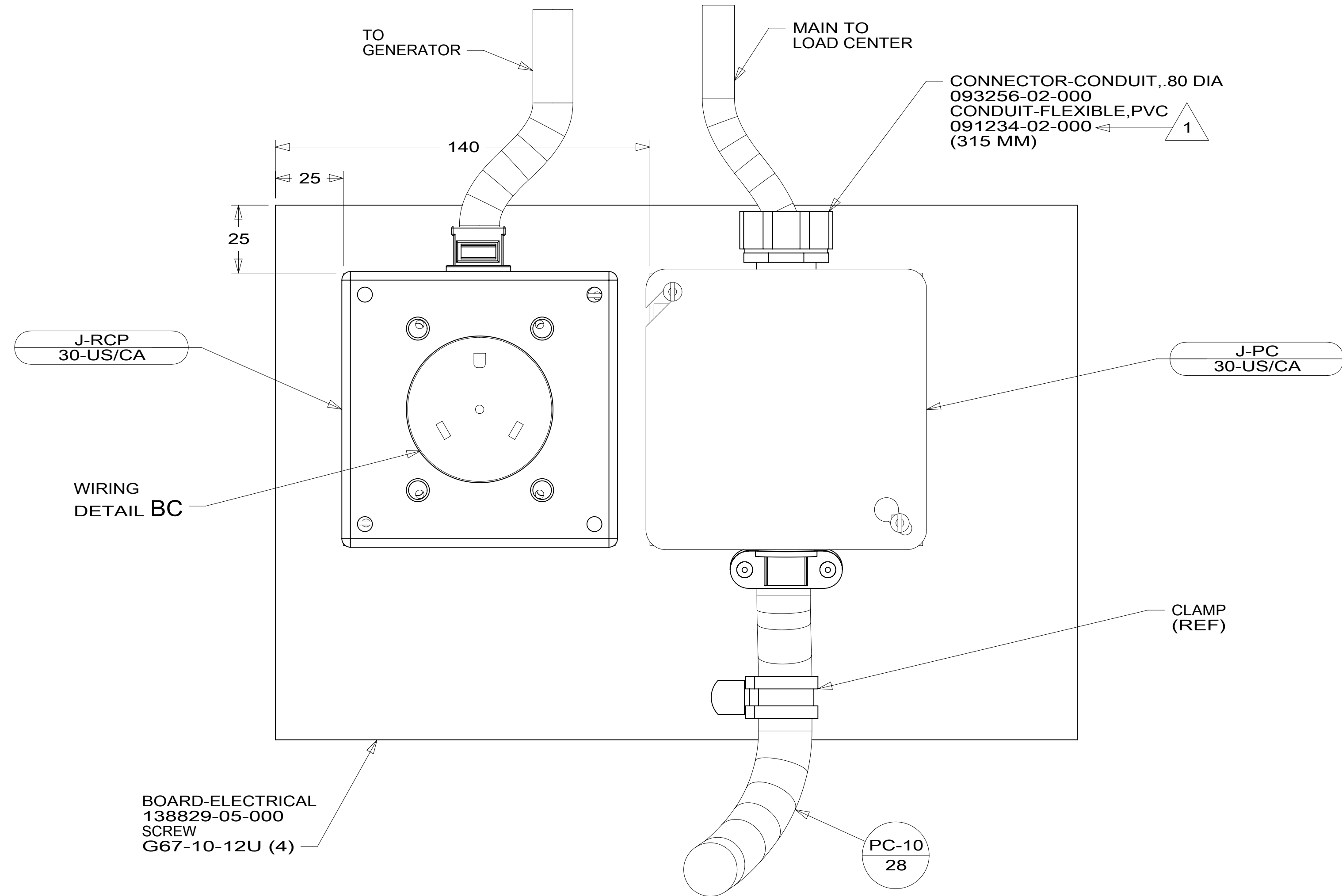
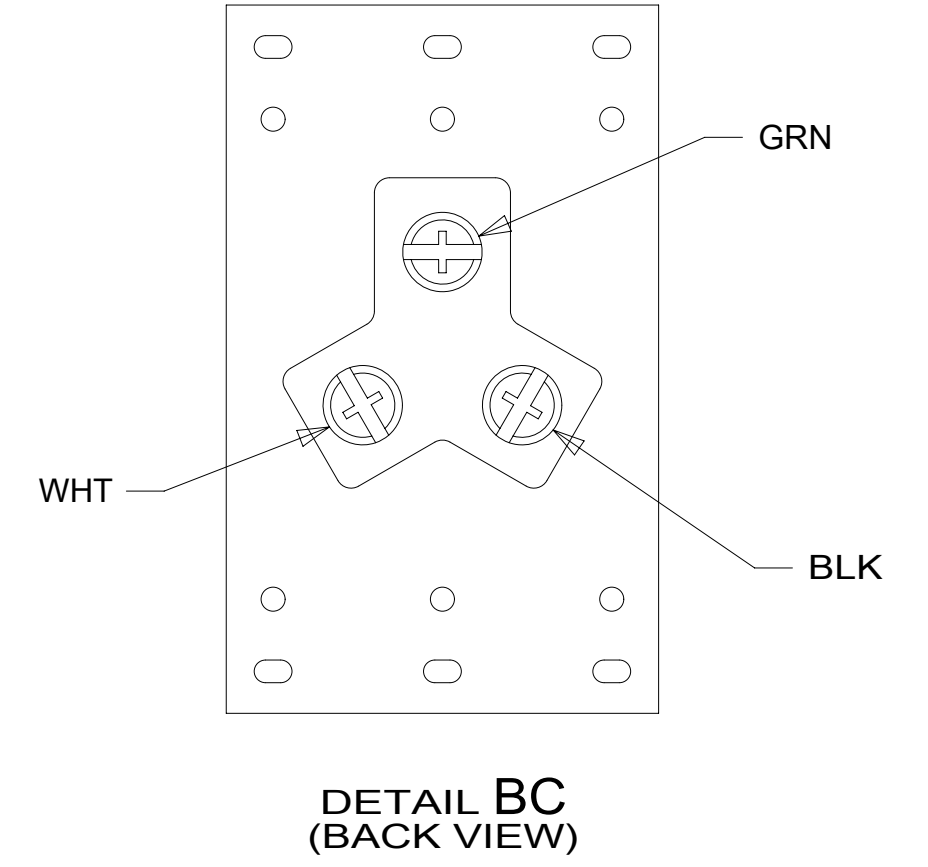
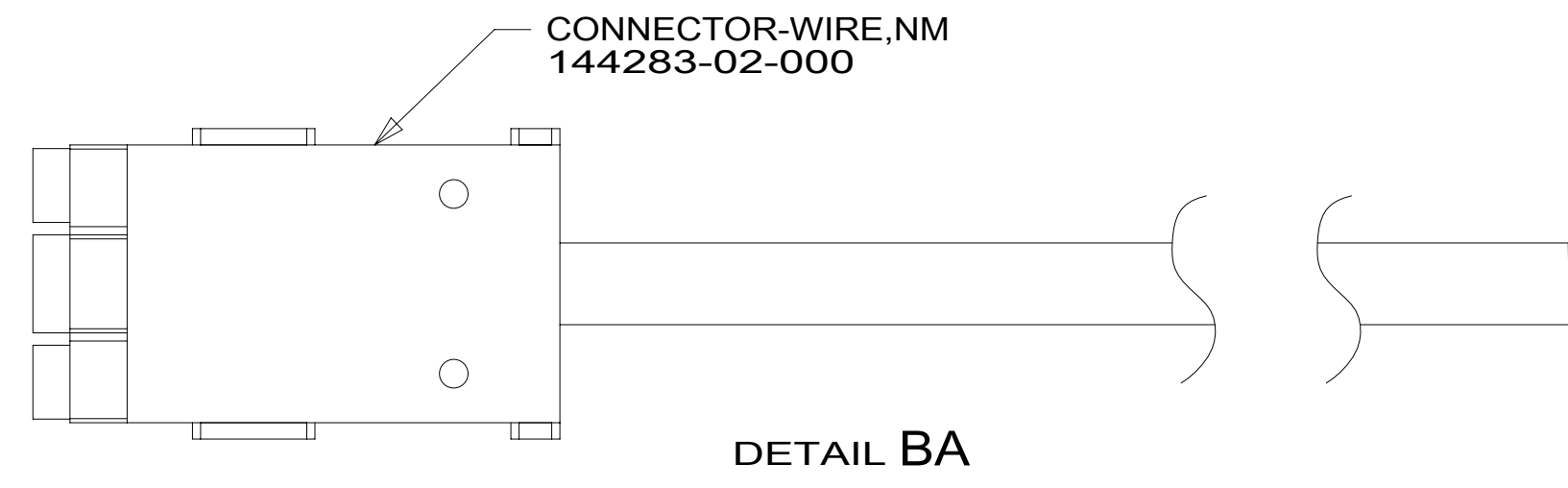
DSNR:		ALL DIMENSIONS ARE IN MILLIMETERS													
DFFR:		<table border="1"> <tr> <td>MATERIAL:</td> <td></td> </tr> <tr> <td>UNSPECIFIED TOLERANCES:</td> <td></td> </tr> <tr> <td>WHOLE DIM (X)</td> <td>3</td> </tr> <tr> <td>ONE-PLACE (X.X)</td> <td>1.5</td> </tr> <tr> <td>TWO-PLACE (X.XX)</td> <td>0.50</td> </tr> <tr> <td>ANGLE</td> <td>1°</td> </tr> </table>		MATERIAL:		UNSPECIFIED TOLERANCES:		WHOLE DIM (X)	3	ONE-PLACE (X.X)	1.5	TWO-PLACE (X.XX)	0.50	ANGLE	1°
MATERIAL:															
UNSPECIFIED TOLERANCES:															
WHOLE DIM (X)	3														
ONE-PLACE (X.X)	1.5														
TWO-PLACE (X.XX)	0.50														
ANGLE	1°														
WEIGHT: (LBS)	FIRST USED:														
17 E31BE															
DESCRIPTION:		LOAD CENTER/ATS ASM													
SHEET:	ITEM/PART NO.:	REV:													
1 OF 3	000212143 / 30131801000														

FOR ELECTRICAL TORQUE SPECIFICATIONS SEE DWG NO. 128783-01-000

FOR ELECTRICAL CALLOUTS SEE DWG NO. 121339-01-000

- 3 SEE DETAIL BB FOR CONNECTOR INSTALLATION.
- 2 SEE DETAIL BA FOR CONNECTOR INSTALLATION.
1. ALL GROUNDS WIRES TO BE COVERED WITH TUBING 8041-02-000.

8 7 6 5 4 3 2 1



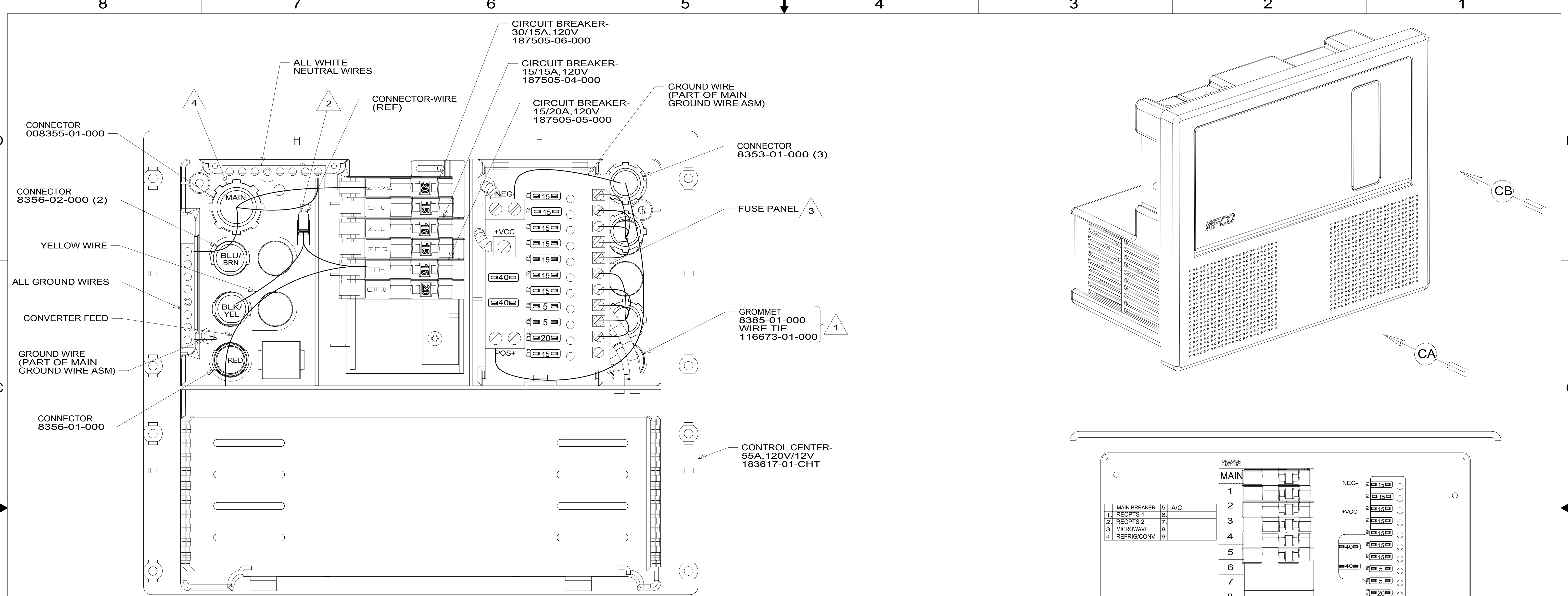
1 SECURE CONDUIT TO MAIN CABLE ASSEMBLY WITH TAPE 8363-01-000 FOR TRANSPORTATION PURPOSES.

FOR ELECTRICAL TORQUE SPECIFICATIONS SEE DWG NO. 128783-01-000

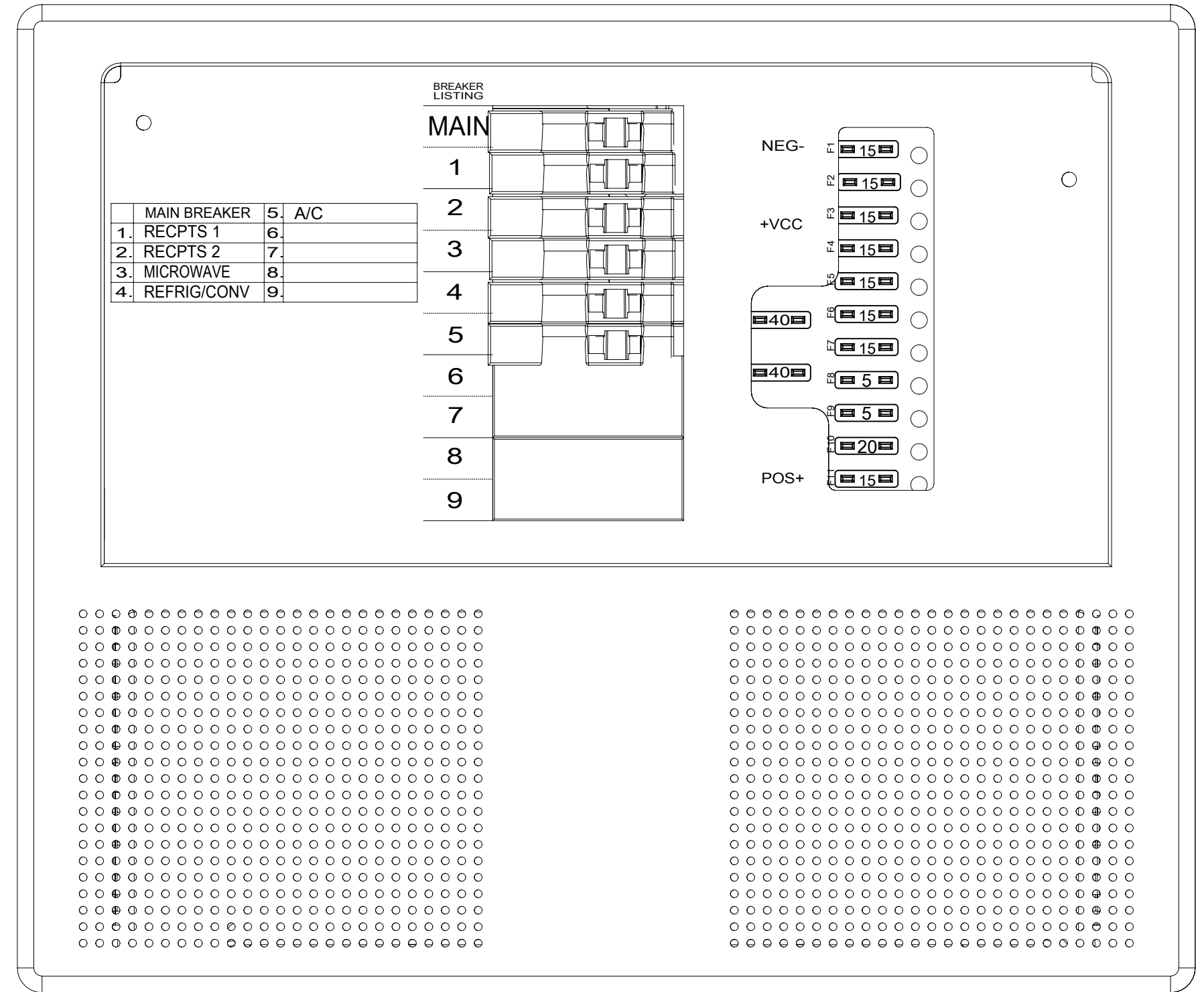
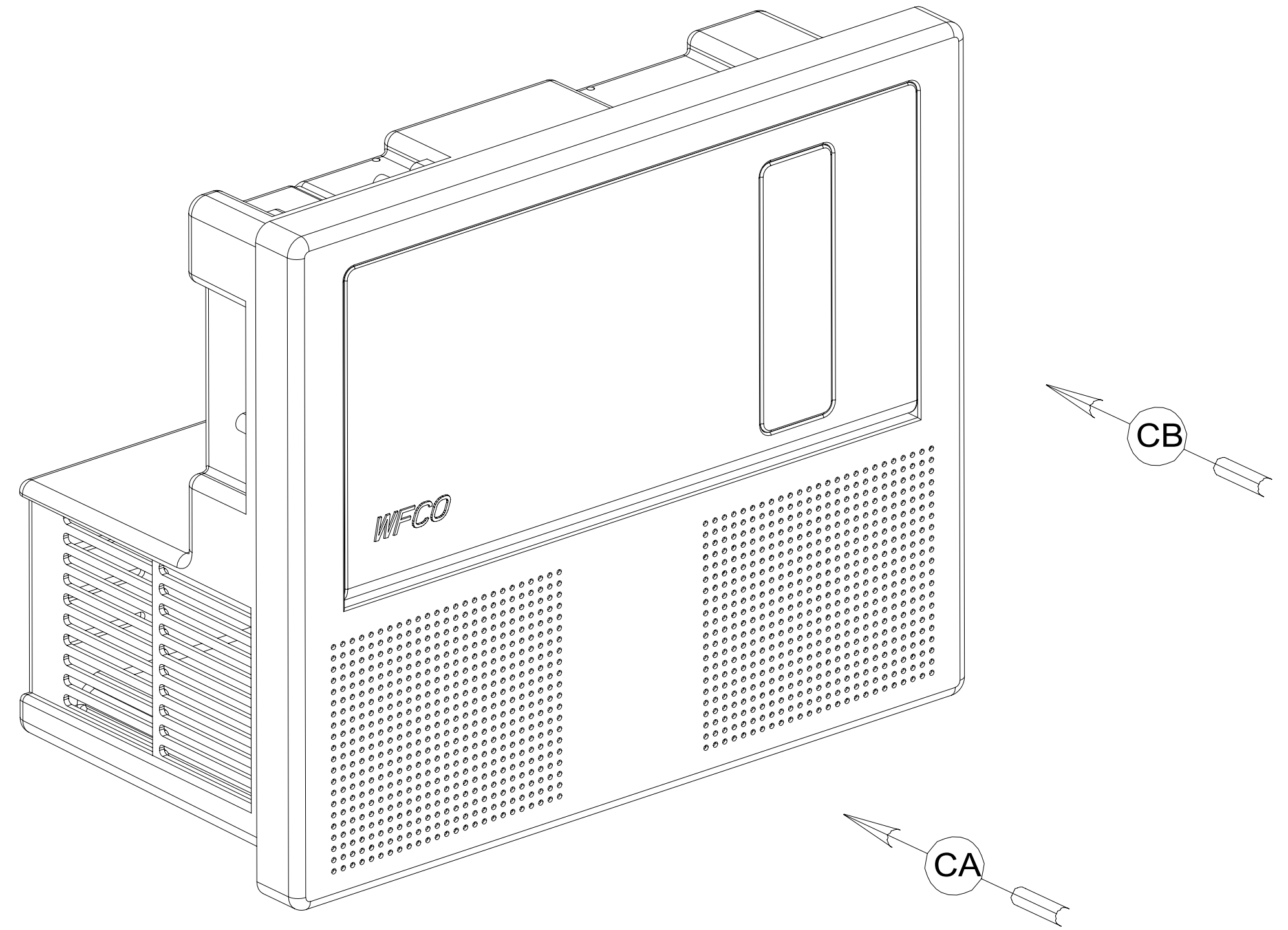
X-X FOR ELECTRICAL CALLOUTS SEE DWG NO. 121339-01-000

265 CODES/STANDARDS-CSA/CMVSS
1B1 CODES/STANDARDS USA

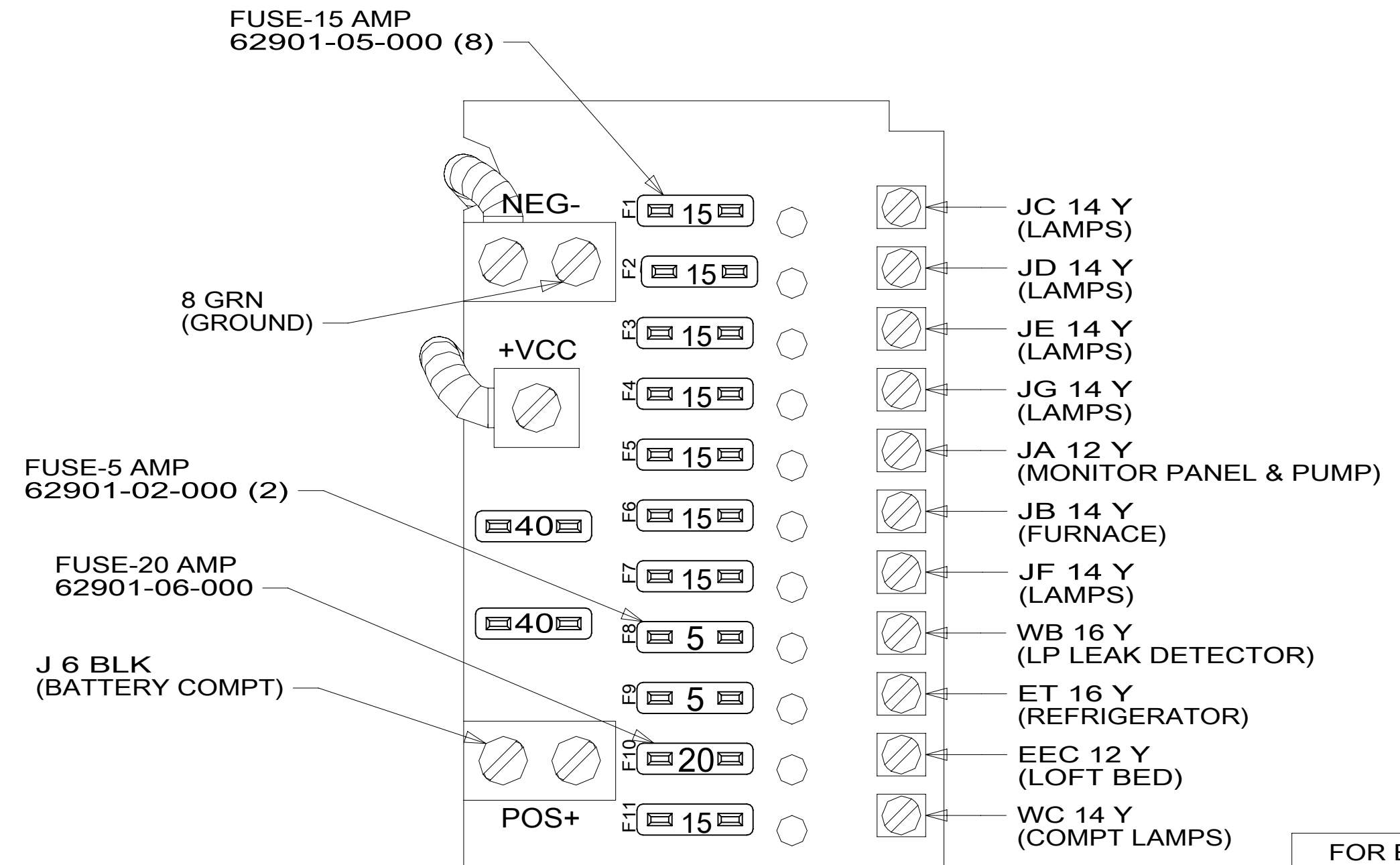
DESCRIPTION:		1B1 265	
LOAD CENTER/ATS ASM			
SHEET:	ITEM/PART NO.:	REV	
2 OF 3	000212143 / 30131801000		



VIEW CA
(COVER REMOVED)



VIEW CB
(DOOR REMOVED)



- NOTES:
- 4 TO BE CONNECTED DURING ASSEMBLY OF LOAD CENTER.
 - 3 SEE TAB BLOCK FOR MODEL SPECIFIC SHEETS.
 - 2 CONNECT CONVERTER POWER CIRCUIT INTO YELLOW BREAKER USE SUPPLIED WIRE NUT TO CONNECT TO YELLOW CIRCUIT WIRE.
 - 1 INSERT GROMMET FROM THE INSIDE OF CONTROL CENTER. SECURE 110V WIRES TO BACKSIDE OF CONTROL CENTER WITH WIRE TIE.

FOR ELECTRICAL TORQUE SPECIFICATIONS SEE DWG NO. 128783-01-000

X-X FOR ELECTRICAL CALLOUTS SEE DWG NO. 121339-01-000

DESCRIPTION: LOAD CENTER/ATS ASM		
SHEET: 3 OF 3	ITEM/PART NO: 000212143 / 30131801000	REV